

PDC ENERGY

**WELD COUNTY, COLORADO
SE SE SEC. 21 T5N R64W 6th P.M.
CHESNUT 21X-414**

ORIGINAL WELLBORE

14 November, 2015

Plan: PROPOSAL #3





Project: WELD COUNTY, COLORADO
Site: SE SE SEC. 21 T5N R64W 6th P.M.
Well: CHESNUT 21X-414
Wellbore: ORIGINAL WELLBORE
Design: PROPOSAL #3

ANNOTATIONS

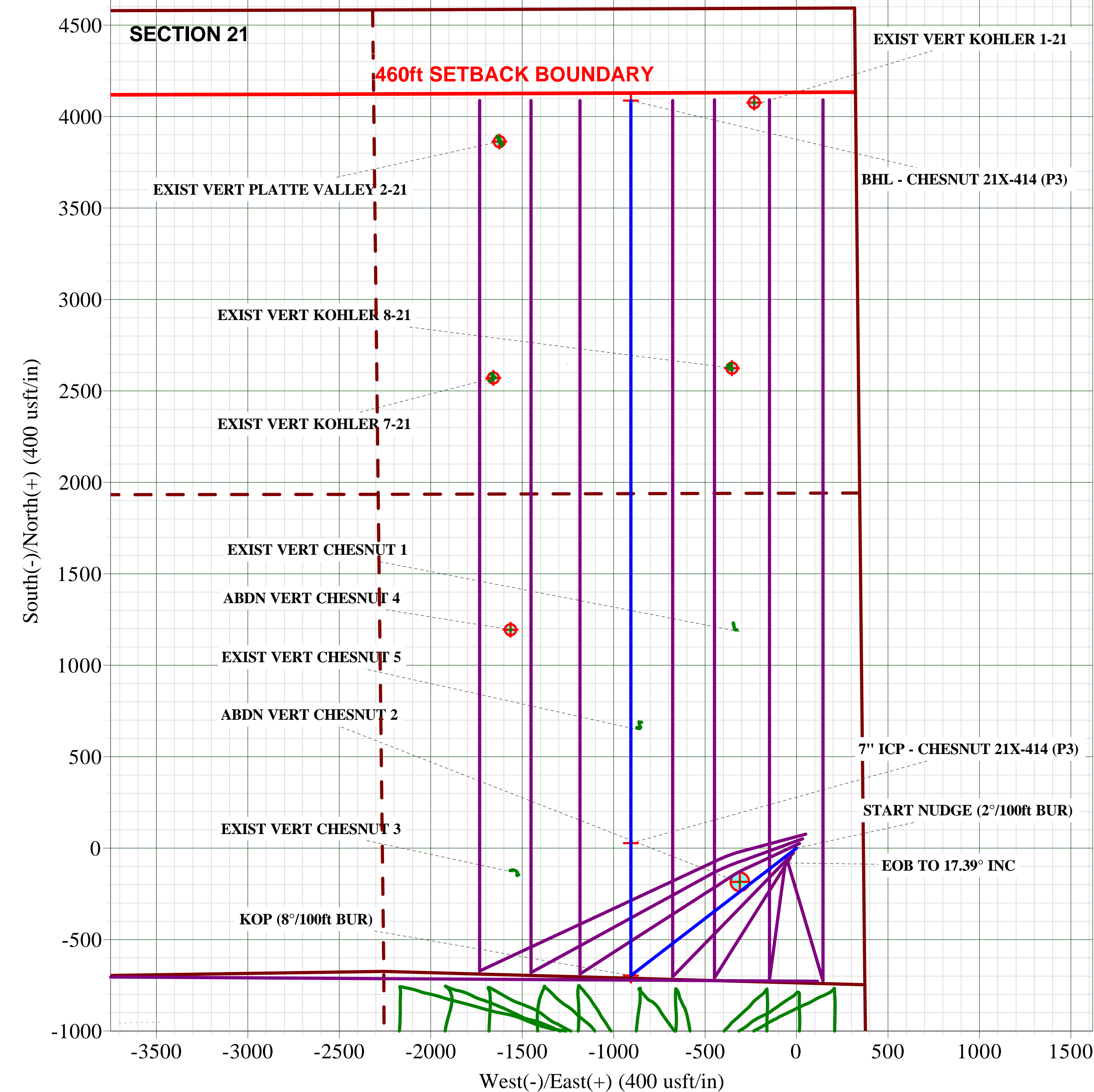
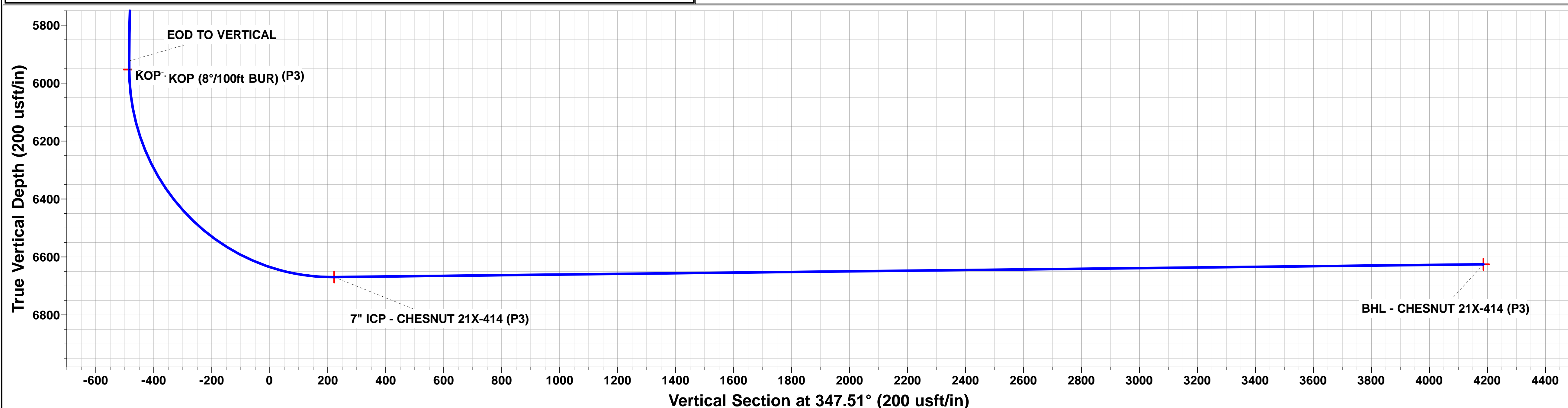
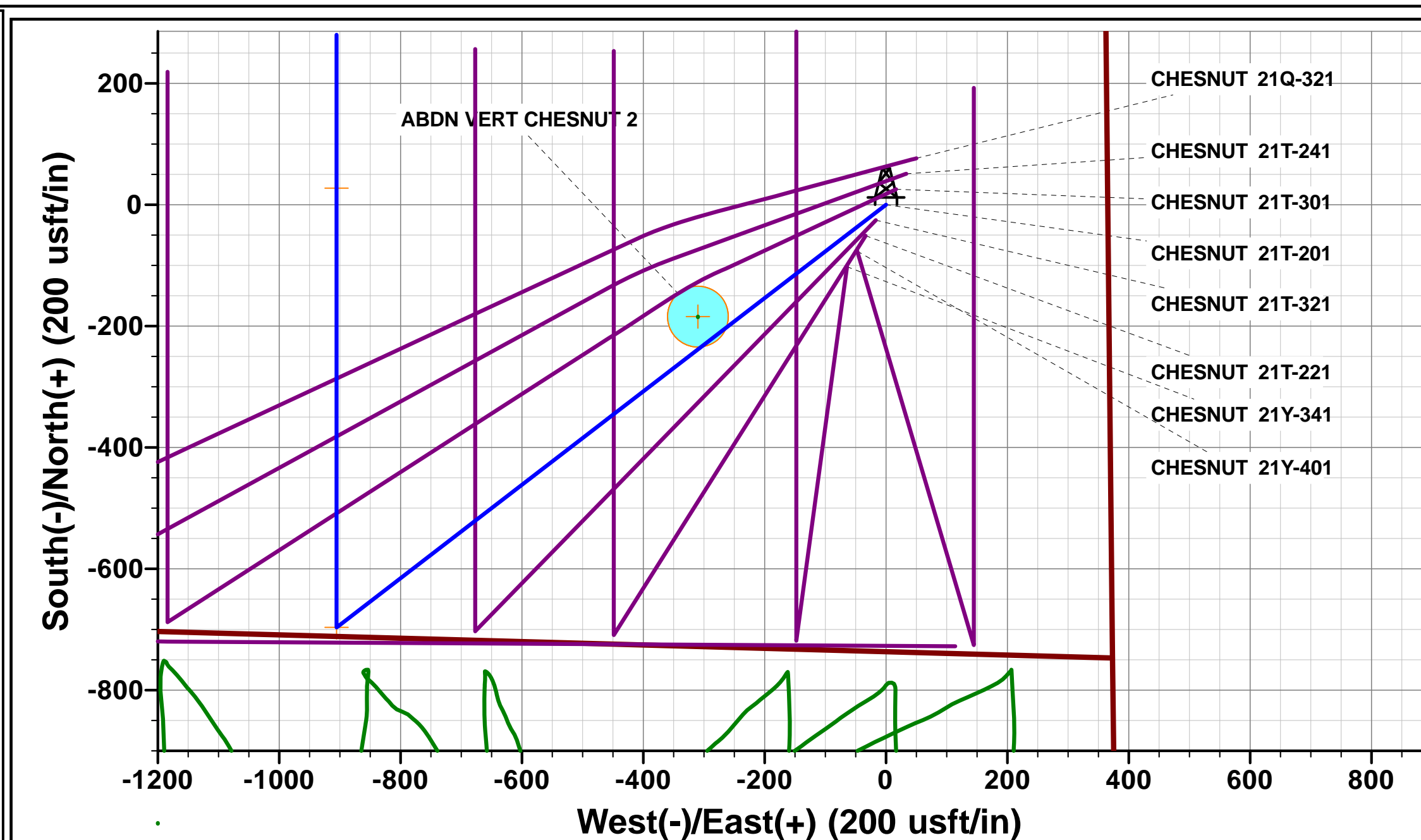
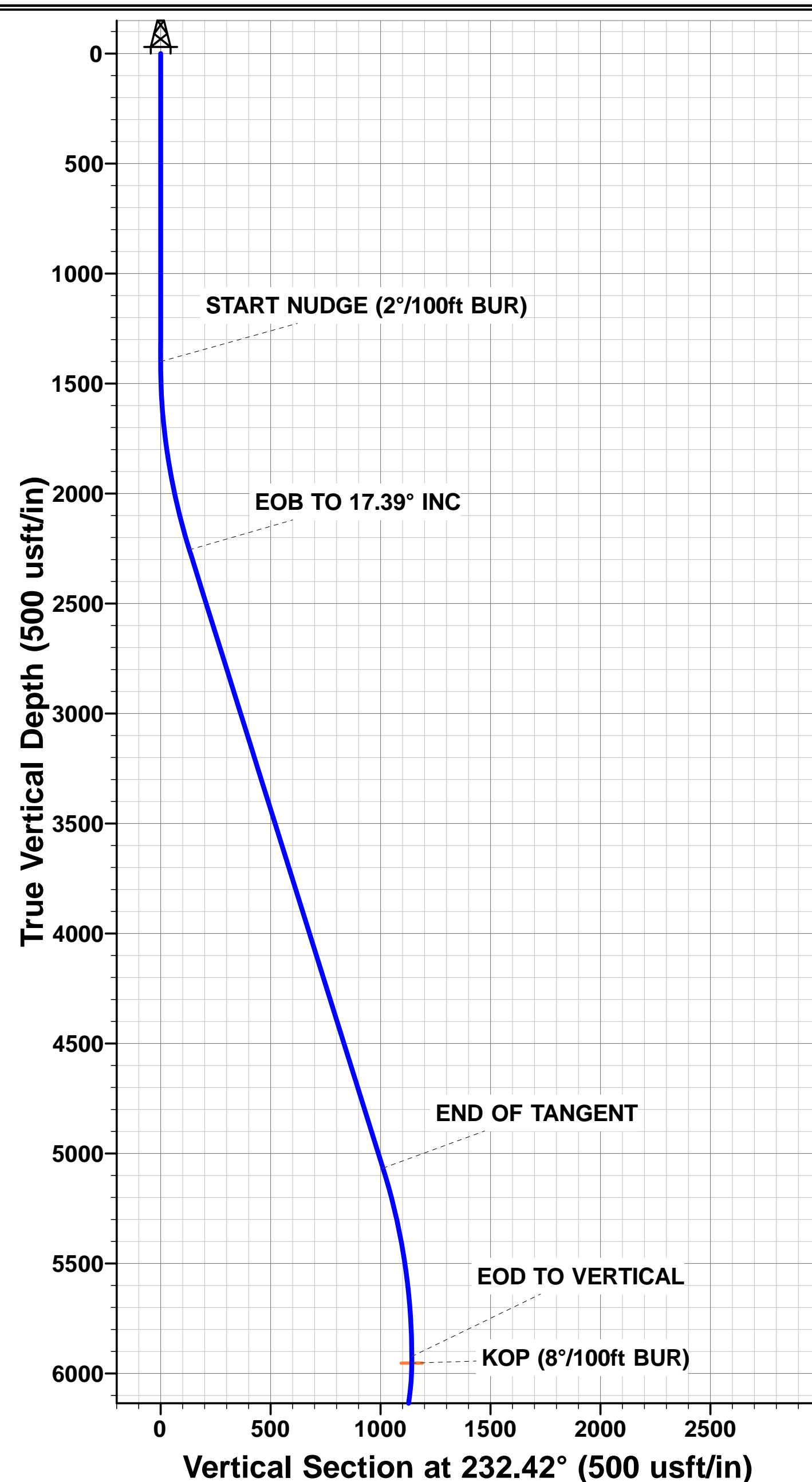
TVD	MD	Inc	Azi	+N/-S	+E/-W	VSec	Dep	Annotation
1400.0	1400.0	0.00	0.00	0.0	0.0	0.0	0.0	START NUDGE (2°/100ft BUR)
2256.3	2269.6	17.39	232.42	-79.9	-103.8	-55.5	131.0	EOB TO 17.39° INC
5067.1	5215.0	17.39	232.42	-616.7	-801.5	-428.8	1011.3	END OF TANGENT
5923.3	6084.5	0.00	232.42	-696.6	-905.3	-484.4	1142.3	EOD TO VERTICAL
5953.3	6114.5	0.00	0.00	-696.6	-905.3	-484.4	1142.3	KOP (8°/100ft BUR)
6669.5	7247.3	90.62	0.00	27.4	-905.3	222.5	1866.3	7" ICP - CHESNUT 21X-414 (P3)
6625.5	11307.8	90.62	0.00	4087.6	-905.3	4186.6	5926.5	BHL - CHESNUT 21X-414 (P3)

PROPOSED LOCAL COORDINATES:

SHL: 737ft FSL & 364t FEL Sec 21
7" ICP: 764.3ft FSL & 1269.3ft FEL Sec 21
BHL: 500ft FNL & 1228ft FEL Sec 21

WELLBORE TARGET DETAILS (LAT/LONG)

Name	TVD	+N/-S	+E/-W	Latitude	Longitude
KOP - CHESNUT 21X-414 (P3)	5953.3	-696.6	-905.3	40.377588	-104.549859
BHL - CHESNUT 21X-414 (P3)	6625.5	4087.6	-905.3	40.390720	-104.549860
7" ICP - CHESNUT 21X-414 (P3)	6669.5	27.3	-905.3	40.379575	-104.549859



Planning Report



Database:	EDM 5000.1 Single User Db	Local Co-ordinate Reference:	Well CHESNUT 21X-414
Company:	PDC ENERGY	TVD Reference:	KB-EST @ 4653.5usft
Project:	WELD COUNTY, COLORADO	MD Reference:	KB-EST @ 4653.5usft
Site:	SE SE SEC. 21 T5N R64W 6th P.M.	North Reference:	True
Well:	CHESNUT 21X-414	Survey Calculation Method:	Minimum Curvature
Wellbore:	ORIGINAL WELLBORE		
Design:	PROPOSAL #3		

Project	WELD COUNTY, COLORADO		
Map System:	US State Plane 1983	System Datum:	Mean Sea Level
Geo Datum:	North American Datum 1983		
Map Zone:	Colorado Northern Zone		Using geodetic scale factor

Site	SE SE SEC. 21 T5N R64W 6th P.M.		
Site Position:		Northing:	1,382,418.54 usft
From:	Map	Easting:	3,265,539.58 usft
Position Uncertainty:	0.0 usft	Slot Radius:	1.10000ft
		Latitude:	40.379223
		Longitude:	-104.546846
		Grid Convergence:	0.62 °

Well	CHESNUT 21X-414		
Well Position	+N/-S	100.9 usft	Northing: 1,382,520.15 usft
	+E/-W	65.7 usft	Easting: 3,265,604.16 usft
Position Uncertainty		0.0 usft	Wellhead Elevation: usft
			Latitude: 40.379500
			Longitude: -104.546610
			Ground Level: 4,640.0 usft

Wellbore	ORIGINAL WELLBORE				
Magnetics	Model Name	Sample Date	Declination (°)	Dip Angle (°)	Field Strength (nT)
	IGRF2015	31/08/2015	8.28	66.92	52,611

Design	PROPOSAL #3			
Audit Notes:				
Version:	Phase:	PROTOTYPE	Tie On Depth:	0.0
Vertical Section:	Depth From (TVD) (usft)	+N/-S (usft)	+E/-W (usft)	Direction (°)
	0.0	0.0	0.0	347.51

Plan Sections											
MD (usft)	Inc (°)	Azi (°)	Vertical Depth	SS (usft)	+N/-S (usft)	+E/-W (usft)	Dogleg Rate (°/100usf)	Build Rate (°/100usf)	Turn Rate (°/100usf)	TFO (°)	Target
0.0	0.00	0.00	0.0	-4,653.5	0.0	0.0	0.00	0.00	0.00	0.00	
1,400.0	0.00	0.00	1,400.0	-3,253.5	0.0	0.0	0.00	0.00	0.00	0.00	
2,269.6	17.39	232.42	2,256.3	-2,397.2	-79.9	-103.8	2.00	2.00	0.00	232.42	
5,215.0	17.39	232.42	5,067.0	413.5	-616.7	-801.5	0.00	0.00	0.00	0.00	
6,084.5	0.00	0.00	5,923.3	1,269.8	-696.6	-905.3	2.00	-2.00	0.00	180.00	
6,114.5	0.00	0.00	5,953.3	1,299.8	-696.6	-905.3	0.00	0.00	0.00	0.00	KOP - CHESNUT 2
7,247.3	90.62	0.00	6,669.5	2,016.0	27.4	-905.3	8.00	8.00	0.00	0.00	
11,307.8	90.62	0.00	6,625.5	1,972.0	4,087.6	-905.3	0.00	0.00	0.00	0.00	BHL - CHESNUT 2

Planning Report



Database:	EDM 5000.1 Single User Db	Local Co-ordinate Reference:	Well CHESNUT 21X-414
Company:	PDC ENERGY	TVD Reference:	KB-EST @ 4653.5usft
Project:	WELD COUNTY, COLORADO	MD Reference:	KB-EST @ 4653.5usft
Site:	SE SE SEC. 21 T5N R64W 6th P.M.	North Reference:	True
Well:	CHESNUT 21X-414	Survey Calculation Method:	Minimum Curvature
Wellbore:	ORIGINAL WELLBORE		
Design:	PROPOSAL #3		

Planned Survey										
MD (usft)	Inc (°)	Azi (°)	TVD (usft)	SS (usft)	+N/-S (usft)	+E/-W (usft)	Vertical Section (usft)	Dogleg Rate (°/100usft)	Build Rate (°/100usft)	Turn Rate (°/100usft)
0.0	0.00	0.00	0.0	4,653.50	0.0	0.0	0.0	0.00	0.00	0.00
100.0	0.00	0.00	100.0	4,553.50	0.0	0.0	0.0	0.00	0.00	0.00
200.0	0.00	0.00	200.0	4,453.50	0.0	0.0	0.0	0.00	0.00	0.00
300.0	0.00	0.00	300.0	4,353.50	0.0	0.0	0.0	0.00	0.00	0.00
400.0	0.00	0.00	400.0	4,253.50	0.0	0.0	0.0	0.00	0.00	0.00
500.0	0.00	0.00	500.0	4,153.50	0.0	0.0	0.0	0.00	0.00	0.00
600.0	0.00	0.00	600.0	4,053.50	0.0	0.0	0.0	0.00	0.00	0.00
700.0	0.00	0.00	700.0	3,953.50	0.0	0.0	0.0	0.00	0.00	0.00
800.0	0.00	0.00	800.0	3,853.50	0.0	0.0	0.0	0.00	0.00	0.00
900.0	0.00	0.00	900.0	3,753.50	0.0	0.0	0.0	0.00	0.00	0.00
1,000.0	0.00	0.00	1,000.0	3,653.50	0.0	0.0	0.0	0.00	0.00	0.00
1,100.0	0.00	0.00	1,100.0	3,553.50	0.0	0.0	0.0	0.00	0.00	0.00
1,200.0	0.00	0.00	1,200.0	3,453.50	0.0	0.0	0.0	0.00	0.00	0.00
1,300.0	0.00	0.00	1,300.0	3,353.50	0.0	0.0	0.0	0.00	0.00	0.00
START NUDGE (2°/100ft BUR)										
1,400.0	0.00	0.00	1,400.0	3,253.50	0.0	0.0	0.0	0.00	0.00	0.00
1,500.0	2.00	232.42	1,500.0	3,153.52	-1.1	-1.4	-0.7	2.00	2.00	0.00
1,600.0	4.00	232.42	1,599.8	3,053.66	-4.3	-5.5	-3.0	2.00	2.00	0.00
1,700.0	6.00	232.42	1,699.5	2,954.05	-9.6	-12.4	-6.7	2.00	2.00	0.00
1,800.0	8.00	232.42	1,798.7	2,854.80	-17.0	-22.1	-11.8	2.00	2.00	0.00
1,900.0	10.00	232.42	1,897.5	2,756.03	-26.5	-34.5	-18.5	2.00	2.00	0.00
2,000.0	12.00	232.42	1,995.6	2,657.88	-38.2	-49.6	-26.5	2.00	2.00	0.00
2,100.0	14.00	232.42	2,093.1	2,560.44	-51.9	-67.4	-36.1	2.00	2.00	0.00
2,200.0	16.00	232.42	2,189.6	2,463.86	-67.7	-88.0	-47.1	2.00	2.00	0.00
EOB TO 17.39° INC										
2,269.6	17.39	232.42	2,256.3	2,397.19	-79.9	-103.8	-55.5	2.00	2.00	0.00
2,300.0	17.39	232.42	2,285.3	2,368.18	-85.4	-111.0	-59.4	0.00	0.00	0.00
2,400.0	17.39	232.42	2,380.7	2,272.75	-103.6	-134.7	-72.1	0.00	0.00	0.00
2,500.0	17.39	232.42	2,476.2	2,177.33	-121.9	-158.4	-84.7	0.00	0.00	0.00
2,600.0	17.39	232.42	2,571.6	2,081.90	-140.1	-182.1	-97.4	0.00	0.00	0.00
2,700.0	17.39	232.42	2,667.0	1,986.47	-158.3	-205.8	-110.1	0.00	0.00	0.00
2,800.0	17.39	232.42	2,762.5	1,891.04	-176.5	-229.4	-122.8	0.00	0.00	0.00
2,900.0	17.39	232.42	2,857.9	1,795.61	-194.8	-253.1	-135.4	0.00	0.00	0.00
3,000.0	17.39	232.42	2,953.3	1,700.18	-213.0	-276.8	-148.1	0.00	0.00	0.00
3,100.0	17.39	232.42	3,048.7	1,604.75	-231.2	-300.5	-160.8	0.00	0.00	0.00
3,200.0	17.39	232.42	3,144.2	1,509.32	-249.5	-324.2	-173.5	0.00	0.00	0.00
3,300.0	17.39	232.42	3,239.6	1,413.90	-267.7	-347.9	-186.1	0.00	0.00	0.00
3,400.0	17.39	232.42	3,335.0	1,318.47	-285.9	-371.6	-198.8	0.00	0.00	0.00
3,500.0	17.39	232.42	3,430.5	1,223.04	-304.1	-395.3	-211.5	0.00	0.00	0.00
3,600.0	17.39	232.42	3,525.9	1,127.61	-322.4	-419.0	-224.1	0.00	0.00	0.00
3,700.0	17.39	232.42	3,621.3	1,032.18	-340.6	-442.6	-236.8	0.00	0.00	0.00
3,800.0	17.39	232.42	3,716.7	936.75	-358.8	-466.3	-249.5	0.00	0.00	0.00
3,900.0	17.39	232.42	3,812.2	841.32	-377.0	-490.0	-262.2	0.00	0.00	0.00
4,000.0	17.39	232.42	3,907.6	745.90	-395.3	-513.7	-274.8	0.00	0.00	0.00
4,100.0	17.39	232.42	4,003.0	650.47	-413.5	-537.4	-287.5	0.00	0.00	0.00
4,200.0	17.39	232.42	4,098.5	555.04	-431.7	-561.1	-300.2	0.00	0.00	0.00
4,300.0	17.39	232.42	4,193.9	459.61	-450.0	-584.8	-312.9	0.00	0.00	0.00
4,400.0	17.39	232.42	4,289.3	364.18	-468.2	-608.5	-325.5	0.00	0.00	0.00
4,500.0	17.39	232.42	4,384.7	268.75	-486.4	-632.1	-338.2	0.00	0.00	0.00
4,600.0	17.39	232.42	4,480.2	173.32	-504.6	-655.8	-350.9	0.00	0.00	0.00
4,700.0	17.39	232.42	4,575.6	77.90	-522.9	-679.5	-363.6	0.00	0.00	0.00
4,800.0	17.39	232.42	4,671.0	-17.53	-541.1	-703.2	-376.2	0.00	0.00	0.00
4,900.0	17.39	232.42	4,766.5	-112.96	-559.3	-726.9	-388.9	0.00	0.00	0.00
5,000.0	17.39	232.42	4,861.9	-208.39	-577.5	-750.6	-401.6	0.00	0.00	0.00

Planning Report



Database:	EDM 5000.1 Single User Db	Local Co-ordinate Reference:	Well CHESNUT 21X-414
Company:	PDC ENERGY	TVD Reference:	KB-EST @ 4653.5usft
Project:	WELD COUNTY, COLORADO	MD Reference:	KB-EST @ 4653.5usft
Site:	SE SE SEC. 21 T5N R64W 6th P.M.	North Reference:	True
Well:	CHESNUT 21X-414	Survey Calculation Method:	Minimum Curvature
Wellbore:	ORIGINAL WELLBORE		
Design:	PROPOSAL #3		

Planned Survey

MD (usft)	Inc (°)	Azi (°)	TVD (usft)	SS (usft)	+N/-S (usft)	+E/-W (usft)	Vertical Section (usft)	Dogleg Rate (°/100usft)	Build Rate (°/100usft)	Turn Rate (°/100usft)
5,100.0	17.39	232.42	4,957.3	-303.82	-595.8	-774.3	-414.3	0.00	0.00	0.00
5,200.0	17.39	232.42	5,052.7	-399.25	-614.0	-798.0	-426.9	0.00	0.00	0.00
END OF TANGENT										
5,215.0	17.39	232.42	5,067.1	-413.56	-616.7	-801.5	-428.8	0.00	0.00	0.00
5,300.0	15.69	232.42	5,148.5	-495.04	-631.5	-820.7	-439.1	2.00	-2.00	0.00
5,400.0	13.69	232.42	5,245.3	-591.77	-647.0	-840.8	-449.8	2.00	-2.00	0.00
5,500.0	11.69	232.42	5,342.8	-689.32	-660.4	-858.2	-459.2	2.00	-2.00	0.00
5,600.0	9.69	232.42	5,441.1	-787.58	-671.7	-872.9	-467.0	2.00	-2.00	0.00
5,700.0	7.69	232.42	5,539.9	-886.43	-680.9	-884.9	-473.4	2.00	-2.00	0.00
5,800.0	5.69	232.42	5,639.2	-985.74	-688.0	-894.1	-478.4	2.00	-2.00	0.00
5,900.0	3.69	232.42	5,738.9	-1,085.40	-693.0	-900.6	-481.8	2.00	-2.00	0.00
6,000.0	1.69	232.42	5,838.8	-1,185.28	-695.8	-904.3	-483.8	2.00	-2.00	0.00
EOD TO VERTICAL										
6,084.5	0.00	232.42	5,923.3	-1,269.77	-696.6	-905.3	-484.4	2.00	-2.00	0.00
6,100.0	0.00	0.00	5,938.8	-1,285.27	-696.6	-905.3	-484.4	0.00	0.00	0.00
KOP (8°/100ft BUR)										
6,114.5	0.00	0.00	5,953.3	-1,299.77	-696.6	-905.3	-484.4	0.00	0.00	0.00
6,200.0	6.84	0.00	6,038.6	-1,385.07	-691.5	-905.3	-479.4	8.00	8.00	0.00
6,300.0	14.84	0.00	6,136.7	-1,483.21	-672.7	-905.3	-461.0	8.00	8.00	0.00
6,400.0	22.84	0.00	6,231.3	-1,577.77	-640.5	-905.3	-429.5	8.00	8.00	0.00
6,500.0	30.84	0.00	6,320.4	-1,666.93	-595.3	-905.3	-385.5	8.00	8.00	0.00
6,600.0	38.84	0.00	6,402.4	-1,748.94	-538.3	-905.3	-329.8	8.00	8.00	0.00
6,700.0	46.84	0.00	6,475.7	-1,822.21	-470.3	-905.3	-263.4	8.00	8.00	0.00
6,800.0	54.84	0.00	6,538.8	-1,885.31	-392.9	-905.3	-187.8	8.00	8.00	0.00
6,900.0	62.84	0.00	6,590.5	-1,937.01	-307.4	-905.3	-104.3	8.00	8.00	0.00
7,000.0	70.84	0.00	6,629.8	-1,976.32	-215.5	-905.3	-14.6	8.00	8.00	0.00
7,100.0	78.84	0.00	6,655.9	-2,002.45	-119.0	-905.3	79.5	8.00	8.00	0.00
7,200.0	86.84	0.00	6,668.4	-2,014.91	-19.9	-905.3	176.3	8.00	8.00	0.00
7" ICP - CHESNUT 21X-414 (P3)										
7,247.3	90.62	0.00	6,669.5	-2,015.96	27.4	-905.3	222.5	8.00	8.00	0.00
7,300.0	90.62	0.00	6,668.9	-2,015.38	80.1	-905.3	273.9	0.00	0.00	0.00
7,400.0	90.62	0.00	6,667.8	-2,014.30	180.1	-905.3	371.6	0.00	0.00	0.00
7,500.0	90.62	0.00	6,666.7	-2,013.22	280.1	-905.3	469.2	0.00	0.00	0.00
7,600.0	90.62	0.00	6,665.6	-2,012.14	380.1	-905.3	566.8	0.00	0.00	0.00
7,700.0	90.62	0.00	6,664.6	-2,011.06	480.0	-905.3	664.5	0.00	0.00	0.00
7,800.0	90.62	0.00	6,663.5	-2,009.97	580.0	-905.3	762.1	0.00	0.00	0.00
7,900.0	90.62	0.00	6,662.4	-2,008.89	680.0	-905.3	859.7	0.00	0.00	0.00
8,000.0	90.62	0.00	6,661.3	-2,007.81	780.0	-905.3	957.3	0.00	0.00	0.00
8,100.0	90.62	0.00	6,660.2	-2,006.73	880.0	-905.3	1,055.0	0.00	0.00	0.00
8,200.0	90.62	0.00	6,659.1	-2,005.65	980.0	-905.3	1,152.6	0.00	0.00	0.00
8,300.0	90.62	0.00	6,658.1	-2,004.56	1,080.0	-905.3	1,250.2	0.00	0.00	0.00
8,400.0	90.62	0.00	6,657.0	-2,003.48	1,180.0	-905.3	1,347.8	0.00	0.00	0.00
8,500.0	90.62	0.00	6,655.9	-2,002.40	1,280.0	-905.3	1,445.5	0.00	0.00	0.00
8,600.0	90.62	0.00	6,654.8	-2,001.32	1,380.0	-905.3	1,543.1	0.00	0.00	0.00
8,700.0	90.62	0.00	6,653.7	-2,000.24	1,480.0	-905.3	1,640.7	0.00	0.00	0.00
8,800.0	90.62	0.00	6,652.7	-1,999.15	1,580.0	-905.3	1,738.4	0.00	0.00	0.00
8,900.0	90.62	0.00	6,651.6	-1,998.07	1,680.0	-905.3	1,836.0	0.00	0.00	0.00
9,000.0	90.62	0.00	6,650.5	-1,996.99	1,780.0	-905.3	1,933.6	0.00	0.00	0.00
9,100.0	90.62	0.00	6,649.4	-1,995.91	1,880.0	-905.3	2,031.2	0.00	0.00	0.00
9,200.0	90.62	0.00	6,648.3	-1,994.83	1,980.0	-905.3	2,128.9	0.00	0.00	0.00
9,300.0	90.62	0.00	6,647.2	-1,993.74	2,080.0	-905.3	2,226.5	0.00	0.00	0.00
9,400.0	90.62	0.00	6,646.2	-1,992.66	2,179.9	-905.3	2,324.1	0.00	0.00	0.00
9,500.0	90.62	0.00	6,645.1	-1,991.58	2,279.9	-905.3	2,421.8	0.00	0.00	0.00

Planning Report



Database:	EDM 5000.1 Single User Db	Local Co-ordinate Reference:	Well CHESNUT 21X-414
Company:	PDC ENERGY	TVD Reference:	KB-EST @ 4653.5usft
Project:	WELD COUNTY, COLORADO	MD Reference:	KB-EST @ 4653.5usft
Site:	SE SE SEC. 21 T5N R64W 6th P.M.	North Reference:	True
Well:	CHESNUT 21X-414	Survey Calculation Method:	Minimum Curvature
Wellbore:	ORIGINAL WELLBORE		
Design:	PROPOSAL #3		

Planned Survey										
MD (usft)	Inc (°)	Azi (°)	TVD (usft)	SS (usft)	+N/-S (usft)	+E/-W (usft)	Vertical Section (usft)	Dogleg Rate (°/100usft)	Build Rate (°/100usft)	Turn Rate (°/100usft)
9,600.0	90.62	0.00	6,644.0	-1,990.50	2,379.9	-905.3	2,519.4	0.00	0.00	0.00
9,700.0	90.62	0.00	6,642.9	-1,989.41	2,479.9	-905.3	2,617.0	0.00	0.00	0.00
9,800.0	90.62	0.00	6,641.8	-1,988.33	2,579.9	-905.3	2,714.6	0.00	0.00	0.00
9,900.0	90.62	0.00	6,640.8	-1,987.25	2,679.9	-905.3	2,812.3	0.00	0.00	0.00
10,000.0	90.62	0.00	6,639.7	-1,986.17	2,779.9	-905.3	2,909.9	0.00	0.00	0.00
10,100.0	90.62	0.00	6,638.6	-1,985.09	2,879.9	-905.3	3,007.5	0.00	0.00	0.00
10,200.0	90.62	0.00	6,637.5	-1,984.00	2,979.9	-905.3	3,105.2	0.00	0.00	0.00
10,300.0	90.62	0.00	6,636.4	-1,982.92	3,079.9	-905.3	3,202.8	0.00	0.00	0.00
10,400.0	90.62	0.00	6,635.3	-1,981.84	3,179.9	-905.3	3,300.4	0.00	0.00	0.00
10,500.0	90.62	0.00	6,634.3	-1,980.76	3,279.9	-905.3	3,398.0	0.00	0.00	0.00
10,600.0	90.62	0.00	6,633.2	-1,979.68	3,379.9	-905.3	3,495.7	0.00	0.00	0.00
10,700.0	90.62	0.00	6,632.1	-1,978.59	3,479.9	-905.3	3,593.3	0.00	0.00	0.00
10,800.0	90.62	0.00	6,631.0	-1,977.51	3,579.9	-905.3	3,690.9	0.00	0.00	0.00
10,900.0	90.62	0.00	6,629.9	-1,976.43	3,679.9	-905.3	3,788.6	0.00	0.00	0.00
11,000.0	90.62	0.00	6,628.8	-1,975.35	3,779.9	-905.3	3,886.2	0.00	0.00	0.00
11,100.0	90.62	0.00	6,627.8	-1,974.27	3,879.8	-905.3	3,983.8	0.00	0.00	0.00
11,200.0	90.62	0.00	6,626.7	-1,973.18	3,979.8	-905.3	4,081.4	0.00	0.00	0.00
11,300.0	90.62	0.00	6,625.6	-1,972.10	4,079.8	-905.3	4,179.1	0.00	0.00	0.00
BHL - CHESNUT 21X-414 (P3)										
11,307.8	90.62	0.00	6,625.5	-1,972.02	4,087.6	-905.3	4,186.6	0.00	0.00	0.00

Plan Annotations					
MD (usft)	TVD (usft)	Local Coordinates		Comment	
		+N/-S (usft)	+E/-W (usft)		
1,400.0	1,400.0	0.0	0.0	START NUDGE (2°/100ft BUR)	
2,269.6	2,256.3	-79.9	-103.8	EOB TO 17.39° INC	
5,215.0	5,067.1	-616.7	-801.5	END OF TANGENT	
6,084.5	5,923.3	-696.6	-905.3	EOD TO VERTICAL	
6,114.5	5,953.3	-696.6	-905.3	KOP (8°/100ft BUR)	
7,247.3	6,669.5	27.4	-905.3	7" ICP - CHESNUT 21X-414 (P3)	
11,307.8	6,625.5	4,087.6	-905.3	BHL - CHESNUT 21X-414 (P3)	