



Corporate Office

1775 Sherman Street, #3000
Denver, Colorado 80203
303.860.5800
www.pdce.com

November 30, 2015

Department of Natural Resources
Oil and Gas Conservation Commission
The Chancery Building
Attn: Matt Lepore
1120 Lincoln St., Suite 801
Denver, CO 80203

Re: **30 Day Certification Letter – Rule 318Ae**
Chesnut 21X-214
SESE, Section 21-T5N-R64W, 6th PM
Weld County, Colorado

Dear Director,

PDC Energy, Inc. ("PDC") hereby certifies to the Director that a thirty (30-day) notice has been given by certified mail to all owners in the proposed wellbore spacing unit consisting of the E2E2 of Section 21 T5N R64W, 160 acres. We have not received any objections to such well location or proposed spacing unit, therefore, PDC hereby requests the Director to approve the well.

If you should have any questions or concerns regarding this permit, please contact the undersigned at (303) 860-5800.

Sincerely,

A handwritten signature in blue ink that reads "Kelsi Welch".

Kelsi Welch
Regulatory Analyst
PDC Energy

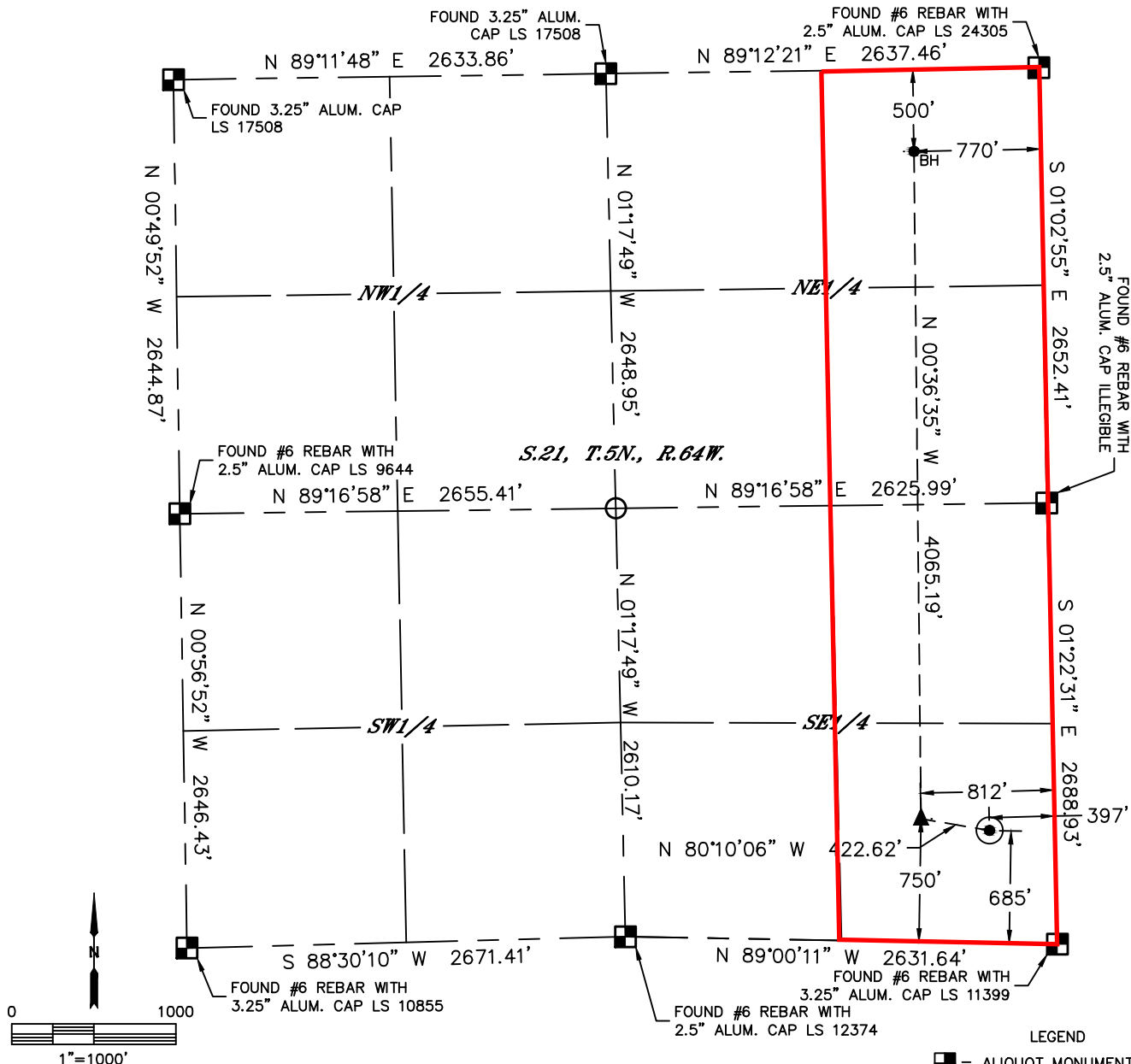


Lat40°, Inc. 6250 W. 10th Street, Unit 2, Greeley, CO 970-515-5294

WELL LOCATION CERTIFICATE

CHESNUT 21X-214

SECTION: 21
TOWNSHIP: 5N
RANGE: 64W
6TH. P.M.
WELD COUNTY, CO



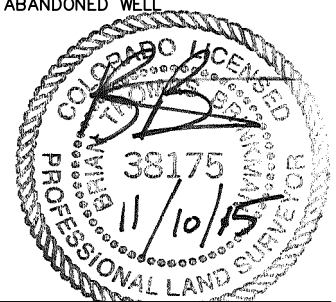
CLIENT: PDC ENERGY				LANDMAN: JEFF DILLINGHAM			
INSTRUMENT OPERATOR: ADAM KELLY				SURVEY DATE: 11/6/2014		SURFACE USE: CROPLAND	
SHL FOOTAGE		SHL LAT°	SHL LONG°	SHL PDOP	SHL ELEV (FT.)	SHL 1/4/1/4	SHL S-T-R
685	FSL	397	FEL	40.37936	-104.54673	2.2	4643 SESE 21-5-64
BHL FOOTAGE		BHL LAT°	BHL LONG°	BHL S-T-R	EP LAT°	EP LONG°	EP S-T-R
500	FNL	770	FEL	40.39073	-104.54822	21-5-64	40.37957 -104.54822 21-5-64

- LEGEND
- = ALIQUOT MONUMENT AS DESCRIBED
 - = CALCULATED POSITION
 - = SURFACE HOLE LOCATION (SHL)
 - ▲ = ENTRY POINT LOCATION (EP)
 - BH = BOTTOM HOLE LOCATION (BHL)
 - ⊙ = EXISTING WELL
 - ⊙ = ABANDONED WELL

NOTE:

- 1) Bearings shown are Grid Bearings of the Colorado State Plane Coordinate System, North Zone, North American Datum 1983. The lineal dimensions as contained herein are based upon the "U.S. Survey Foot."
- 2) Distances to section lines measured at 90 degrees from said section lines.
- 3) Ground elevations are based on an observed GPS elevation (NAVD 1988 DATUM).
- 4) Latitude and Longitude shown are (NAD 83 DATUM).
- 5) IMPROVEMENTS: See LOCATION DRAWING for all visible improvements within 500' of oil and gas location.
- 6) This map does not represent a boundary survey.

NEAREST CULTURAL ITEMS	
BUILDING	±441' SE
BUILDING UNIT	±449' SE
HIGH OCCUPANCY BUILDING UNIT	±3080' NW
DESIGNATED OUTSIDE ACTIVITY AREA	5280'+
PUBLIC ROAD (COUNTY ROAD 55)	±382' E
ABOVE GROUND UTILITY	±409' E
RAILROAD	±2062' N
PROPERTY LINE	±397' E



Brian T. Brinkman—On behalf of Lat40°, Inc.
Colorado Licensed Professional Land Surveyor No. 38175
DATE: 11/10/2015
PROJECT#: 2014040