

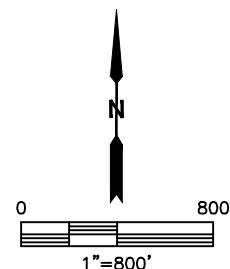
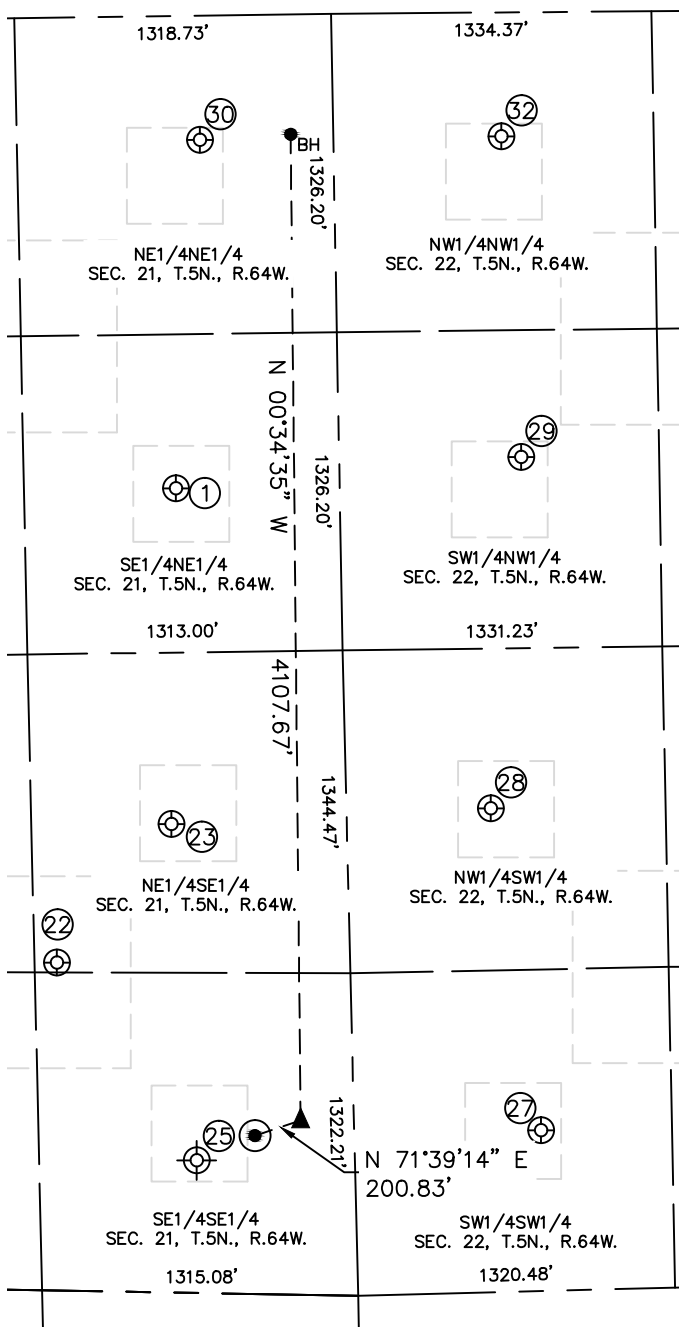


Lat40°, Inc. 6250 W. 10th Street, Unit 2, Greeley, CO 970-515-5294

SITE SKETCH

CHESNUT 21W-304

SECTION: 21
TOWNSHIP: 5N
RANGE: 64W
6TH. P.M.
WELD COUNTY, CO



WELL NO.	WELL NAME	SHL FOOTAGE				SHL LAT°	SHL LONG°	PDOP	ELEV (FT.)	1/4/1/4
1	KOHLER 8-21	1969	FNL	683	FEL	40.38670	-104.54786	2.4	4609	SENE
22	CHESNUT 5	1366	FSL	1221	FEL	40.38129	-104.54971	1.9	4634	NESE
23	CHESNUT 1	1956	FSL	730	FEL	40.38286	-104.54798	1.7	4621	NESE
25	CHESNUT 2	550	FSL	660	FEL	40.37899	-104.54772	N/A	4636	SESE
27	THOUTT 22-2	670	FSL	778	FWL	40.37932	-104.54251	2.4	4614	SWSW
28	THOUTT 22-1	2016	FSL	601	FWL	40.38300	-104.54321	2.3	4605	NWSW
29	RICE 22-2	1853	FNL	758	FWL	40.38702	-104.54270	1.6	4607	SWNW
30	KOHLER 1-21	518	FNL	555	FEL	40.39068	-104.54744	1.6	4604	NENE
32	KALEB 1	516	FNL	699	FWL	40.39068	-104.54294	1.7	4577	NWNW

NOTE: THE ABANDONED WELL DATA SHOWN IN RED ABOVE WAS OBTAINED FROM COGCC SCOUT CARDS.

DATE: 11/10/2015
PROJECT#: 2014040