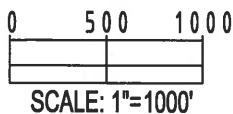
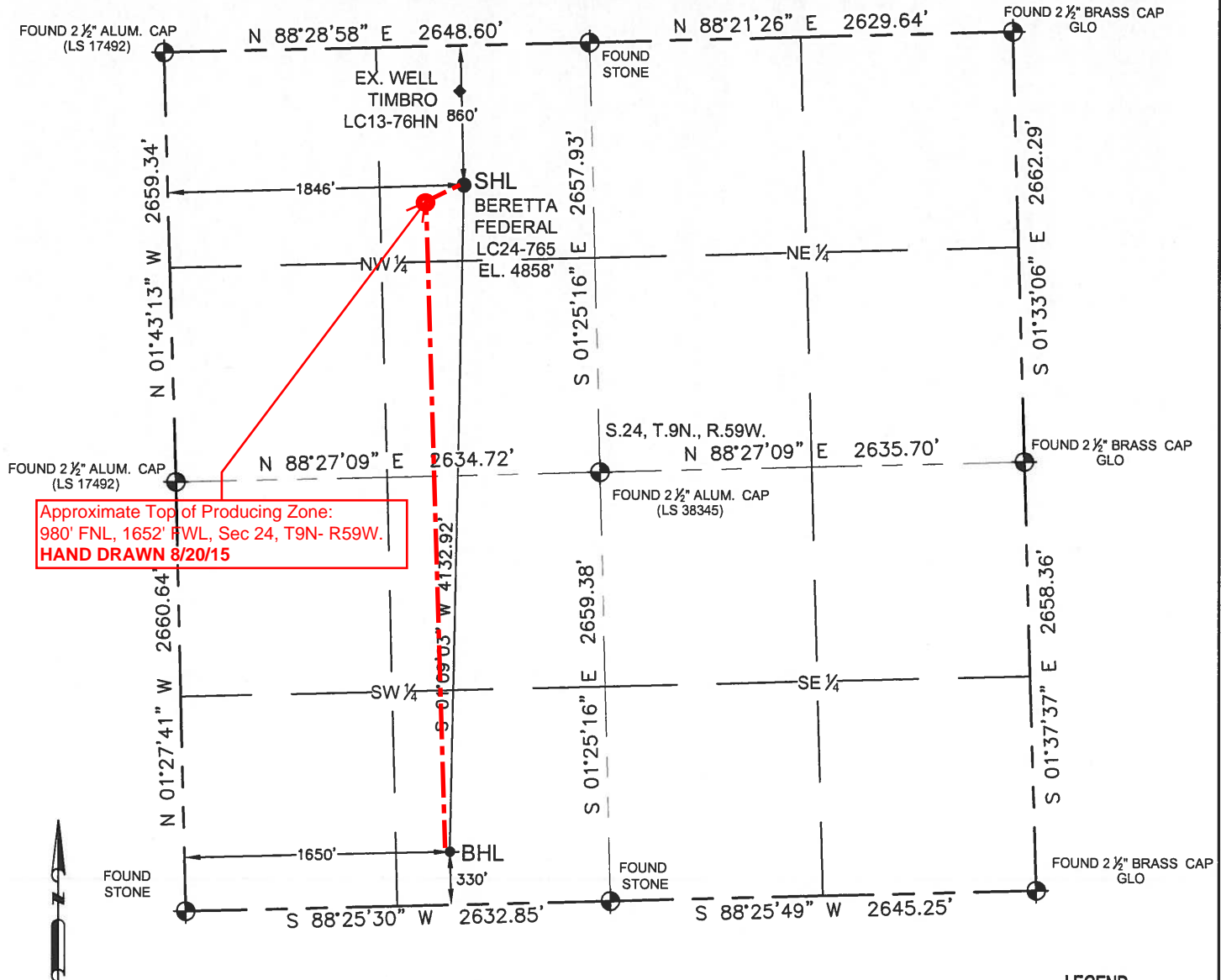


WELL LOCATION CERTIFICATE

THIS MAP DOES NOT REPRESENT A BOUNDARY SURVEY

SECTION: 24
TOWNSHIP: 9N
RANGE: 59W



In accordance with a request from Cody Ball with Noble Energy Inc. Petroleum Field Services, LLC has determined the surface location of the BERETTA FEDERAL LC24-765 to be 860' from the NORTH line and 1846' from the WEST line as measured at right angles from the section line of Section 24, Township 9 North, Range 59 West of the Sixth Principal Meridian, County of Weld, State of Colorado, and the bottom hole to be 330' from the SOUTH line and 1650' from the WEST line as measured at right angles from the section line of Section 24, Township 9 North, Range 59 West of the Sixth Principal Meridian, County of Weld, State of Colorado.

LEGEND

- = FOUND MONUMENT
- = CALCULATED POSITION
- = PROPOSED WELL
- ◆ = BOTTOM HOLE
- ◆ = EXISTING WELL

I hereby state that this Well Location Certificate was prepared by me, or under my direct supervision, that the fieldwork was completed on 04/22/14 for and on behalf of Noble Energy Inc., that this is not a Land Survey Plat or an Improvement Survey Plat, and that it is not to be relied upon for the establishment of fence, building, or other future improvement lines.

- Notes:
- 1) Bearings shown are Grid Bearings of the Colorado State Plane Coordinate System, North Zone, North American Datum 1983/2011. The lineal dimensions as shown herein are grid distances based upon the "U.S. Survey Foot."
 - 2) Ground elevations are based on an observed GPS elevation (NAVD 1988 DATUM).
 - 3) NEAREST EXISTING WELL IN SECTION 24 IS: TIMBRO LC13-76HN, 580' N
 - 4) IMPROVEMENTS: See LOCATION DRAWING exhibit for all visible improvements within 500' of disturbed area.
 - 5) SURFACE USE: "RANGELAND"
 - 6) INSTRUMENT OPERATOR: OWEN MCKEE

Note:
According to Colorado law, you must commence any legal action based upon any defect in this W.L.C. within three years after you first discover such defect. In no event, may any action based upon any defect in this survey be commenced more than ten years after the date of this certification shown hereon. (13-80-105 C.R.S.)

NEAREST CULTURAL ITEMS:
BUILDING 5280+
BUILDING UNIT 5280+
HIGH OCCUPANCY BUILDING UNIT 5280+
DESIGNATED OUTSIDE ACTIVITY AREA 5280+
PUBLIC ROAD 2086' NW
ABOVE GROUND UTILITY 2036' NW
RAILROAD 5280+
PROPERTY LINE 524' W

SURFACE LOCATION:
LATITUDE: 40.74127°N
LONGITUDE: 103.92912°W
PDOP: 1.5
ELEV: 4858'
¼ ¼: NE¼NW¼

BOTTOM HOLE:
LATITUDE: 40.72993°N
LONGITUDE: 103.92969°W

FIELD DATE: 04-22-14
DRAWING DATE: 06-16-15
DRAWN BY: MDCL
CHECKED BY: FMB

JACOB STONE FRISCH, PLS 38149
DATE: 07-08-15
JOB NO: B15.NOB.0019
FOR AND ON BEHALF OF P.F.S.

