

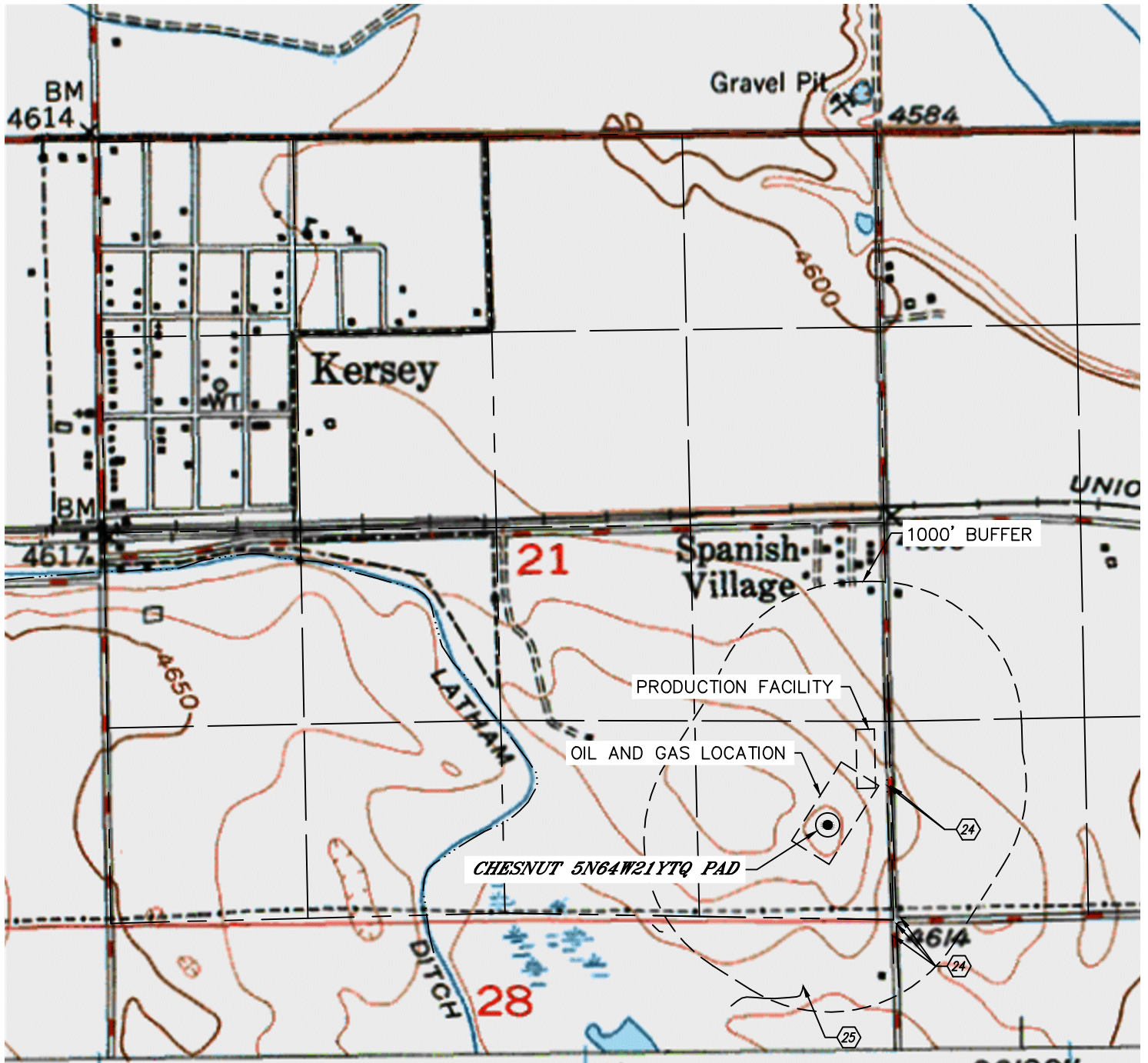


Lat40°, Inc. 6250 W. 10th Street, Unit 2, Greeley, CO 970-515-5294

# HYDROLOGY MAP

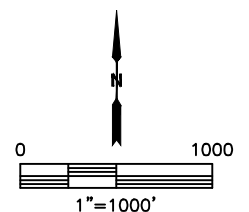
CHESNUT 5N64W21YTQ PAD

SECTION: 21  
TOWNSHIP: 5N  
RANGE: 64W  
6TH. P.M.  
WELD COUNTY, CO



DISTANCES MEASURED FROM THE EDGE OF THE OIL AND GAS LOCATION.

- ②④ BARROW DITCH 55' & 86' E, 608', 611' & 645' SE
- ②⑤ DITCH 840' SW



NEAREST DOWN GRADIENT SURFACE WATER: BARROW DITCH 55' E

DATE: 6/9/2015  
PROJECT#: 2014040