



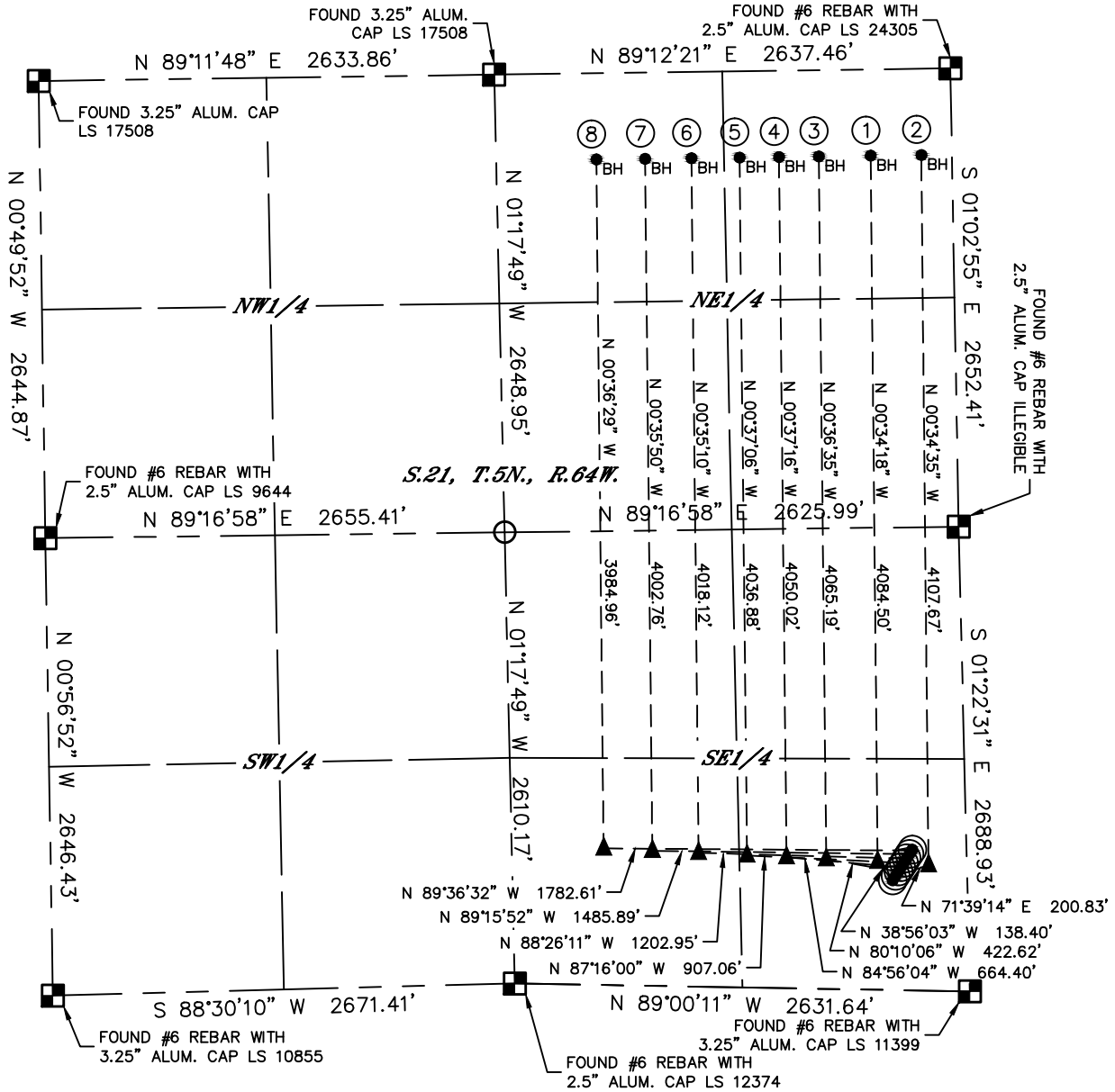
Lat40°, Inc. 6250 W. 10th Street, Unit 2, Greeley, CO 970-515-5294

MULTI-WELL PLAN

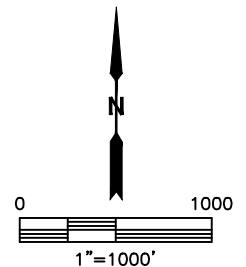
CHESNUT 5N64W21YTQ PAD

THIS MAP DOES NOT REPRESENT A BOUNDARY SURVEY

SECTION: 21
TOWNSHIP: 5N
RANGE: 64W
6TH. P.M.
WELD COUNTY, CO



#	WELL NAME	BHL FOOTAGE			BHL LAT °	BHL LONG °	BHL S-T-R	
1	CHESNUT 21W-434	500	FNL	470	FEL	40.39073	-104.54714	21-5-64
2	CHESNUT 21W-304	500	FNL	177	FEL	40.39073	-104.54609	21-5-64
3	CHESNUT 21X-214	500	FNL	770	FEL	40.39073	-104.54822	21-5-64
4	CHESNUT 21X-434	500	FNL	1000	FEL	40.39072	-104.54904	21-5-64
5	CHESNUT 21X-414	500	FNL	1228	FEL	40.39072	-104.54986	21-5-64
6	CHESNUT 21X-304	500	FNL	1506	FEL	40.39072	-104.55086	21-5-64
7	CHESNUT 21Y-404	500	FNL	1774	FEL	40.39072	-104.55182	21-5-64
8	CHESNUT 21Y-214	500	FNL	2056	FEL	40.39072	-104.55283	21-5-64



SHEET 1 OF 2

DATE: 11/10/2015
PROJECT#: 2014040

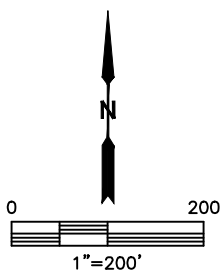
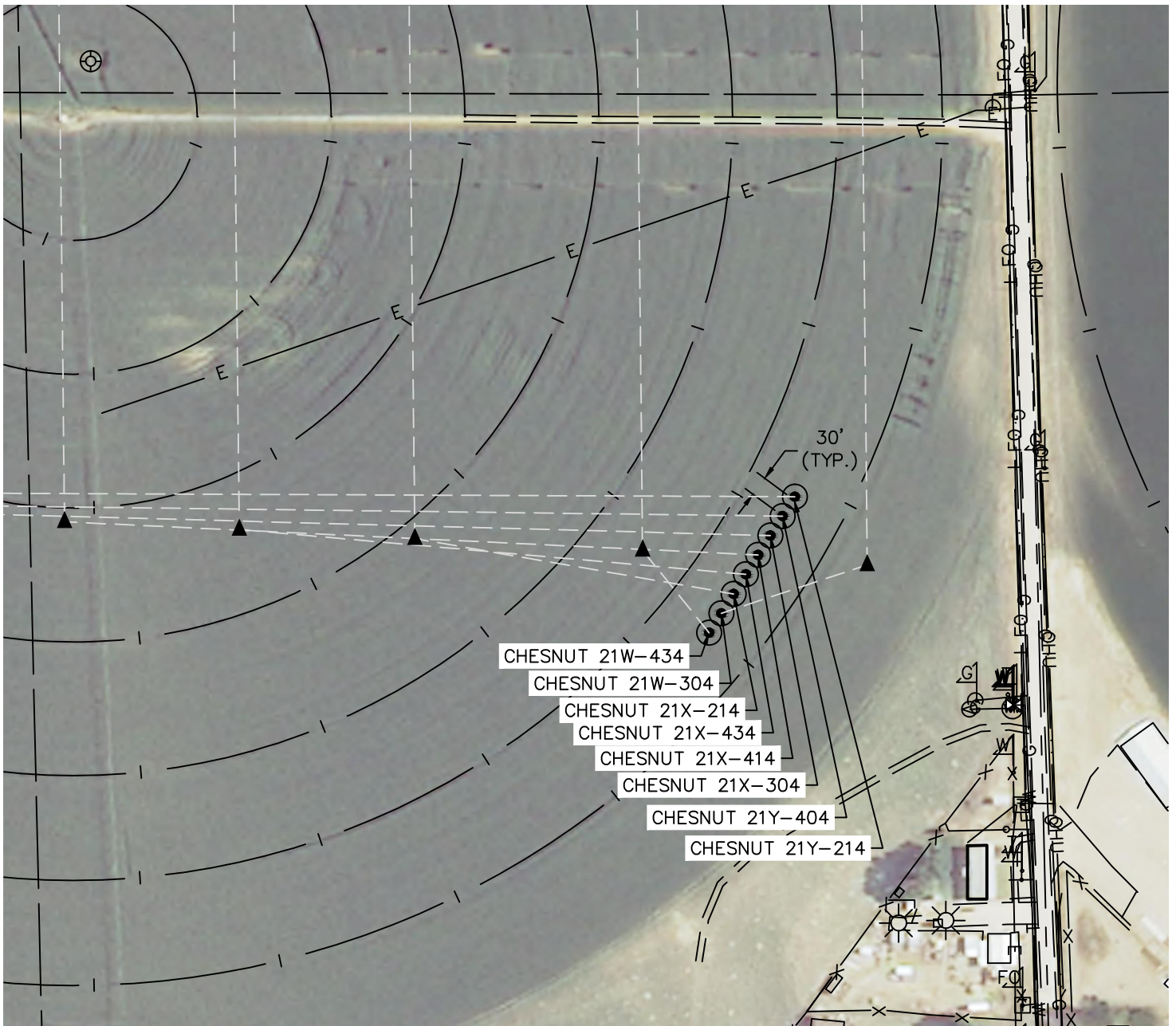


Lat40°, Inc. 6250 W. 10th Street, Unit 2, Greeley, CO 970-515-5294

MULTI-WELL PLAN

CHESNUT 5N64W21YTQ PAD

SECTION: 21
TOWNSHIP: 5N
RANGE: 64W
6TH. P.M.
WELD COUNTY, CO



SHEET 2 OF 2

DATE: 11/10/2015
PROJECT#: 2014040