



VIA ELECTRONIC TRANSMITTAL

12/17/2015

Colorado Oil and Gas Conservation Commission
Attn: Matt Lepore, Director
1120 Lincoln Street, Suite 801
Denver, CO 80203

RE: Rule 603.a(1) states "At the time of initial drilling, a Well shall be located not less than two hundred (200) feet from buildings, public roads, major above ground utility lines, or railroads."

Well Pad located in the SESE, Section 12, Township 1 South, Range 68 West, Adams County, Colorado

Dear Mr. Lepore,

This well pad has been approved for 8 wells to be drilled from the same pad and are arranged in 2 rows of four. The Afton 12-16H-4 has been Drilled and is producing. The Afton 12-16H-3 is next in line to the west and has been permitted only. The next 2 wells to the west are permits in process - Afton 12-16H-2 and Afton 12-16H-1. All 4 of these wells are spotted on the pad at 191' to an overhead power line to the south. (See attached Diagram showing item (I) as the Utility Line). The first 2 wells were permitted back in 2013 prior to the rule change to the 200' distance requirement.

Mendell plans to contact the Utility Company requesting a Utility Waiver or the option of having the Utility line buried along this stretch adjacent to the well pad, or the possibility of de-energizing and lowering the line temporarily during operations (depending on what exactly the line supplies) .

In the interim, Mendell respectfully requests the COGCC approve this Rule 603.a(1) Distance to Above Ground Utility Waiver Request. Thank you very much for your consideration of this matter.

Respectfully,

Paul Gottlob
Regulatory & Engineering Technician
Integrated Petroleum Technologies Inc
Consultants to Mendell Finisterre II, LLC

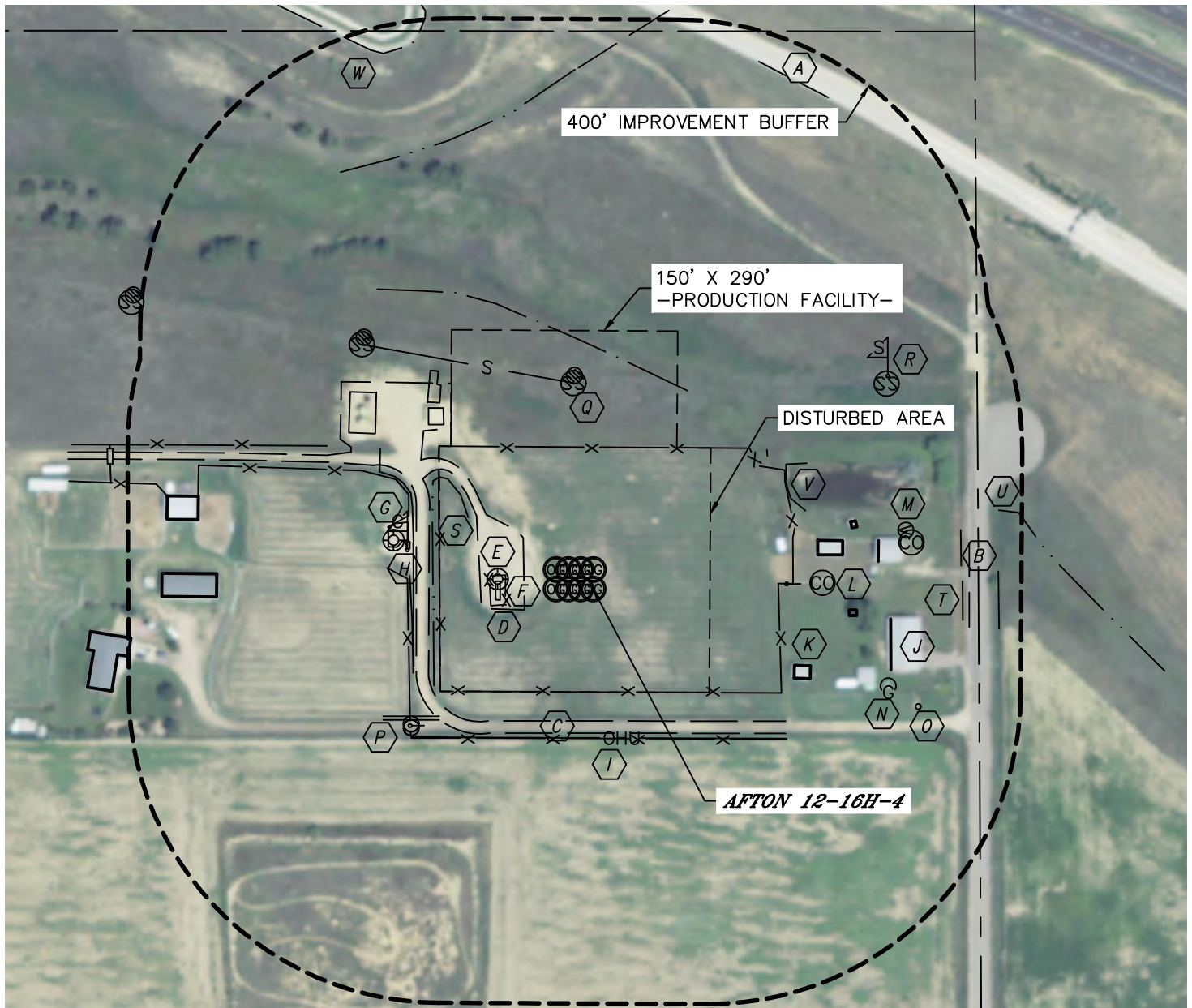


Lat40°, Inc. 1635 Foxtrail Drive, Suite 325 Loveland, CO 970-776-3321

LOCATION DRAWING

AFTON HZ PAD

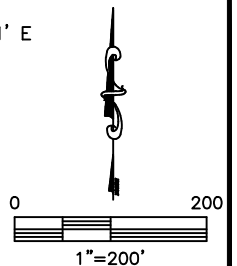
SECTION: 12
TOWNSHIP: 1S
RANGE: 68W



IMPROVEMENTS:

(MEASURED FROM THE PROPOSED AFTON 12-16H-4 WELL LOCATION)

- | | | |
|---|---|---|
| A E470 EXIT RAMP ±700' NE | I OVERHEAD UTILITY LINE 191' S | Q SEWER MANHOLE 266' N, 433' NW, 460' NE |
| B COLORADO BLVD ±480' E | J DWELLING 384' SE, ±596' SW | R SEWER MARKER 467' NE |
| C ACCESS ROAD 169' S, 211' W | K OUT-BUILDING 276' & 356' SE, 292', 341' & 372' NE, 330' E, ±482' W, ±515' NW | S DITCH 185' & 605' NW, 206' & 231' W, 283' NE |
| D FENCE 113', 197' W & 238' W, 132' S, 238' E, 182' N, 388' NW | L CLEAN-OUT 295' E, 413' NE | T BARROW DITCH 474' & 521' E |
| E EX. WELLHEAD 124' W, 264' NW | M SPIGOT 409' NE | U SWALE 531' NE |
| F EX. EDGE OF DISTURBANCE 89' W, 276' NW | N PROPANE TANK 399' SE | V POND 279' NE |
| G EX. PRODUCTION EQUIPMENT (SHNEIDER) 241', 285', 310' & 344' NW | O CISTERN LID 444' SE | W CANAL 737' NW |
| H GAS MARKER 244' NW | P SIGN 285' & 288' SW | |



NEAREST: BUILDING 276' SE (OUT-BUILDING), PUBLIC ROAD ±480' E (COLORADO BLVD), ABOVE GROUND UTILITY 191' S, RAILROAD 1520' NW, PROPERTY LINE 133' S

DATE: 7/9/2013
PROJECT#: 2013026