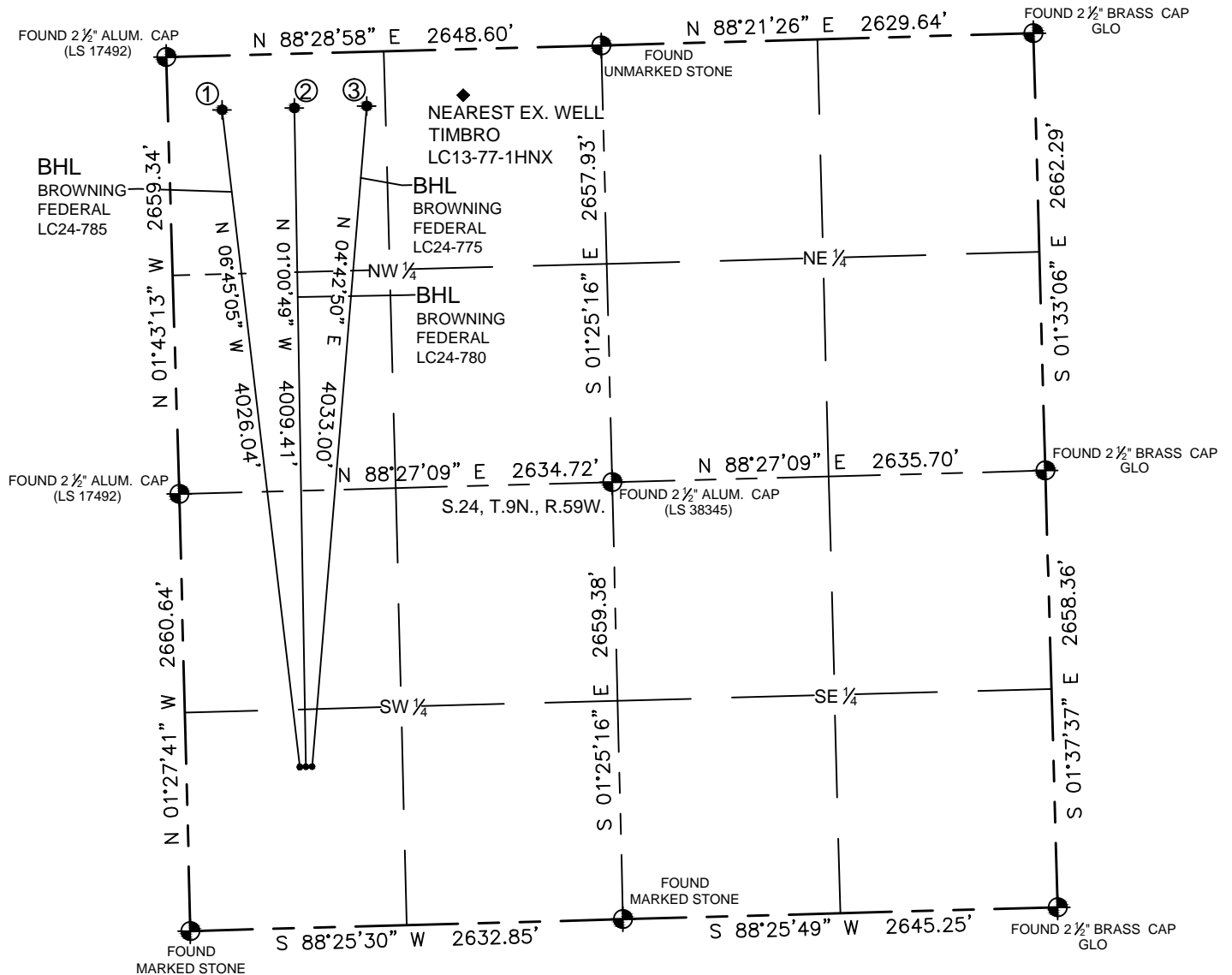


MULTI-WELL PLAN

LC24-13 PAD

THIS MAP DOES NOT REPRESENT A BOUNDARY SURVEY

SECTION: 24
TOWNSHIP: 9N
RANGE: 59W



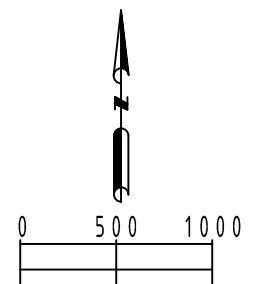
WELL PAD DETAIL

BROWNING
LC24-785

BROWNING
LC24-780

● 37.5 ● 37.5 ●

BROWNING FEDERAL
LC24-775



SCALE: 1"=1000'

SHEET 1 OF 1

FIELD
DATE:
04-22-14

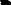
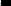


DRAWING
DATE:
06-16-15

DRAWN BY:
CSG

CHECKED BY:
FMB

- | ① | ② | ③ |
|--|--|---|
| BOTTOM HOLE:
BROWNING FEDERAL
LC24-785
330' FNL
330' FWL
LAT: 40.74268°N
LONG: 103.93462°W | BOTTOM HOLE:
BROWNING FEDERAL
LC24-780
330' FNL
770' FWL
LAT: 40.74269°N
LONG: 103.93303°W | BOTTOM HOLE:
BROWNING FEDERAL
LC24-775
330' FNL
1210' FWL
LAT: 40.74270°N
LONG: 103.93144°W |

LEGEND

-  = FOUND MONUMENT
 = PROPOSED WELL
 = BOTTOM HOLE
 = EXISTING WELL

Petroleum Field Services, LLC

7535 HILLTOP CIRCLE

Denver, CO 80221

MULTI WELL PLAN

LC24-13 PAD

SECTION: 24
TOWNSHIP: 9N
RANGE: 59W



SHEET 2 OF 2

FIELD DATE: 04-22-14
DRAWING DATE: 07-07-15
DRAWN BY: MDC
CHECKED BY: KAD

