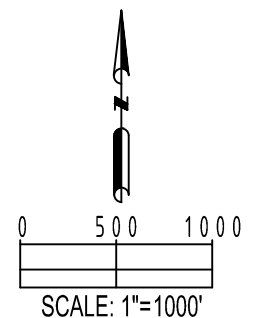
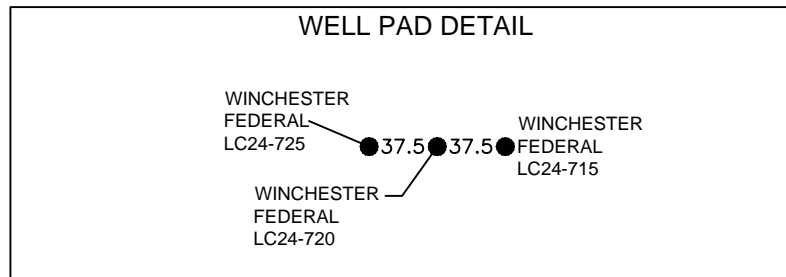
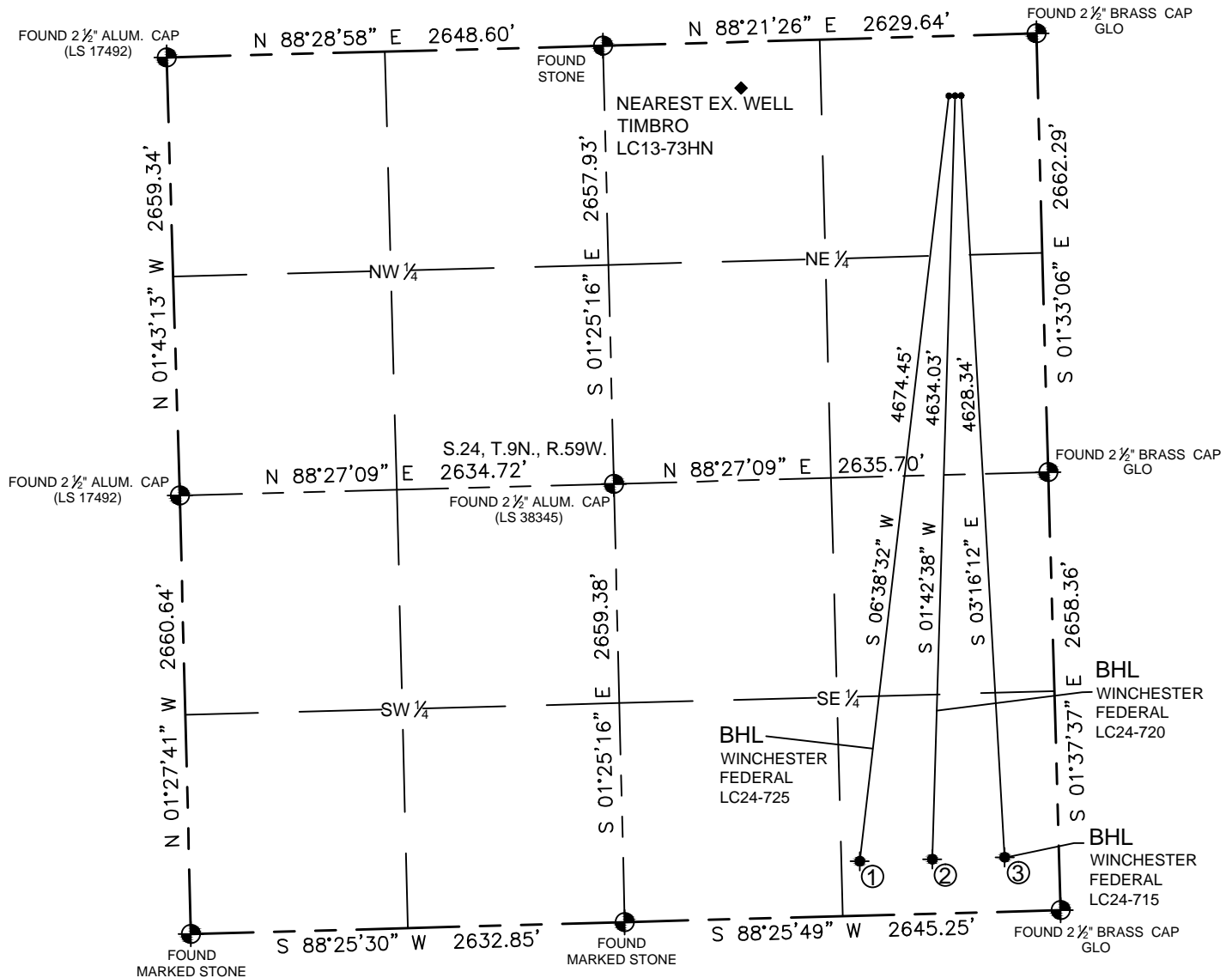


# MULTI-WELL PLAN

LC24-01 PAD

THIS MAP DOES NOT REPRESENT A BOUNDARY SURVEY

SECTION: 24  
TOWNSHIP: 9N  
RANGE: 59W



PAGE 1 OF 2

FIELD DATE: 04-22-14
DRAWING DATE: 06-15-15
DRAWN BY: CSG
CHECKED BY: KAD

① BOTTOM HOLE:  
WINCHESTER FEDERAL  
LC24-725  
330' FSL  
1210' FEL  
LAT: 40.72999°N  
LONG: 103.92096°W

② BOTTOM HOLE:  
WINCHESTER FEDERAL  
LC24-720  
330' FSL  
770' FEL  
LAT: 40.73001°N  
LONG: 103.91938°W

③ BOTTOM HOLE:  
WINCHESTER FEDERAL  
LC24-715  
330' FSL  
330' FEL  
LAT: 40.73002°N  
LONG: 103.91779°W

## LEGEND

- = FOUND MONUMENT
- = PROPOSED WELL
- ◆ = BOTTOM HOLE
- ◆ = EXISTING WELL

Petroleum Field Services, LLC

7535 HILLTOP CIRCLE

Denver, CO 80221

# MULTI WELL PLAN

LC24-01 PAD

SECTION: 24  
TOWNSHIP: 9N  
RANGE: 59W



SHEET 2 OF 2

FIELD  
DATE:  
04-22-14

DRAWING  
DATE:  
06-22-15

DRAWN BY:  
KAD

CHECKED BY:  
MDCL

