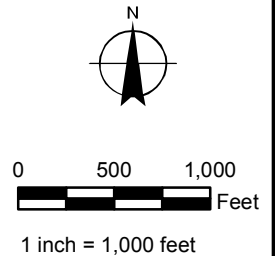
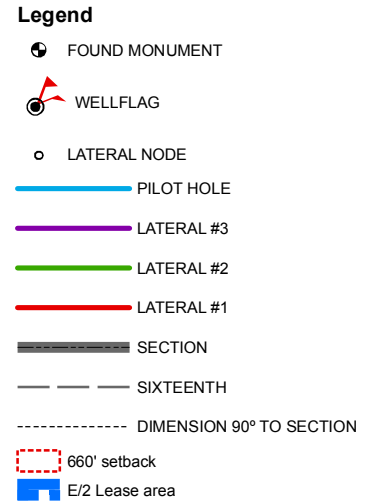



**SURFACE HOLE: 271' FSL, 943' FEL  
SECTION 35, T-33-N, R-09-W, N.M.P.M.,  
LA PLATA COUNTY, COLORADO  
LAT: 37.05393°N LONG: 107.78910°W  
ELEVATION AT STAKE = 7,337' NAVD88**



1. SURFACE USE IS GRAZING.
2. SEE ATTACHED ADDENDUM FOR IMPROVEMENTS,  
AND PROPERTY LINES WITHIN 200' OF BORE.
3. DATE OF SURVEY 17 December 2014
4. BASIS OF ELEVATION = NAVD88 AS PREDICTED BY GEOID12A.
5. GPS POSITIONS COLLECTED AT PDOP VALUE OF 6 OR LESS.
6. LOCATION OFFSETS TO SECTION LINE MEASURED AT 90° TO SECTION LINES.
7. (M) INDICATES MEASURED VALUE. (R) INDICATES RECORD PLAT INFORMATION.

LAT 1	4233.1' N / 1103.8' W
LAT 2	4232.8' N / 1053.8' W
LAT 3	4232.6' N / 1003.8' W
PILOT	
(SLANT)	666.5' N / 1109.4' W

A circular seal for a Colorado Registered Professional Land Surveyor. The outer ring contains the text "COLORADO REGISTERED" at the top and "PROFESSIONAL LAND SURVEYOR" at the bottom, separated by dots. Inside the ring, the name "DAVID ALEXANDER JOHNSON" is written in a circle. In the center, the number "33648" is displayed. Below the number, the expiration date "2015-11-30" is stamped in blue ink. A blue ink signature is visible on the left side of the seal.



**JMAS**  
JOHNSON MAPPING  
AND SURVEYING, LLC  
PO BOX 2174  
FARMINGTON NM 87499-2174  
505-360-8029  
ALEX@JOHNSONMAPPING.BIZ