

EXTRACTION OIL & GAS

Location: COLORADO Slot: SLOT#04 MEADER 4 (350'FSL & 2574'FWL, SEC.05)
Field: WELD COUNTY (NAD83/TRUE NORTH) Well: MEADER 4
Facility: SEC.05-T11N-R63W Wellbore: MEADER 4 PWB

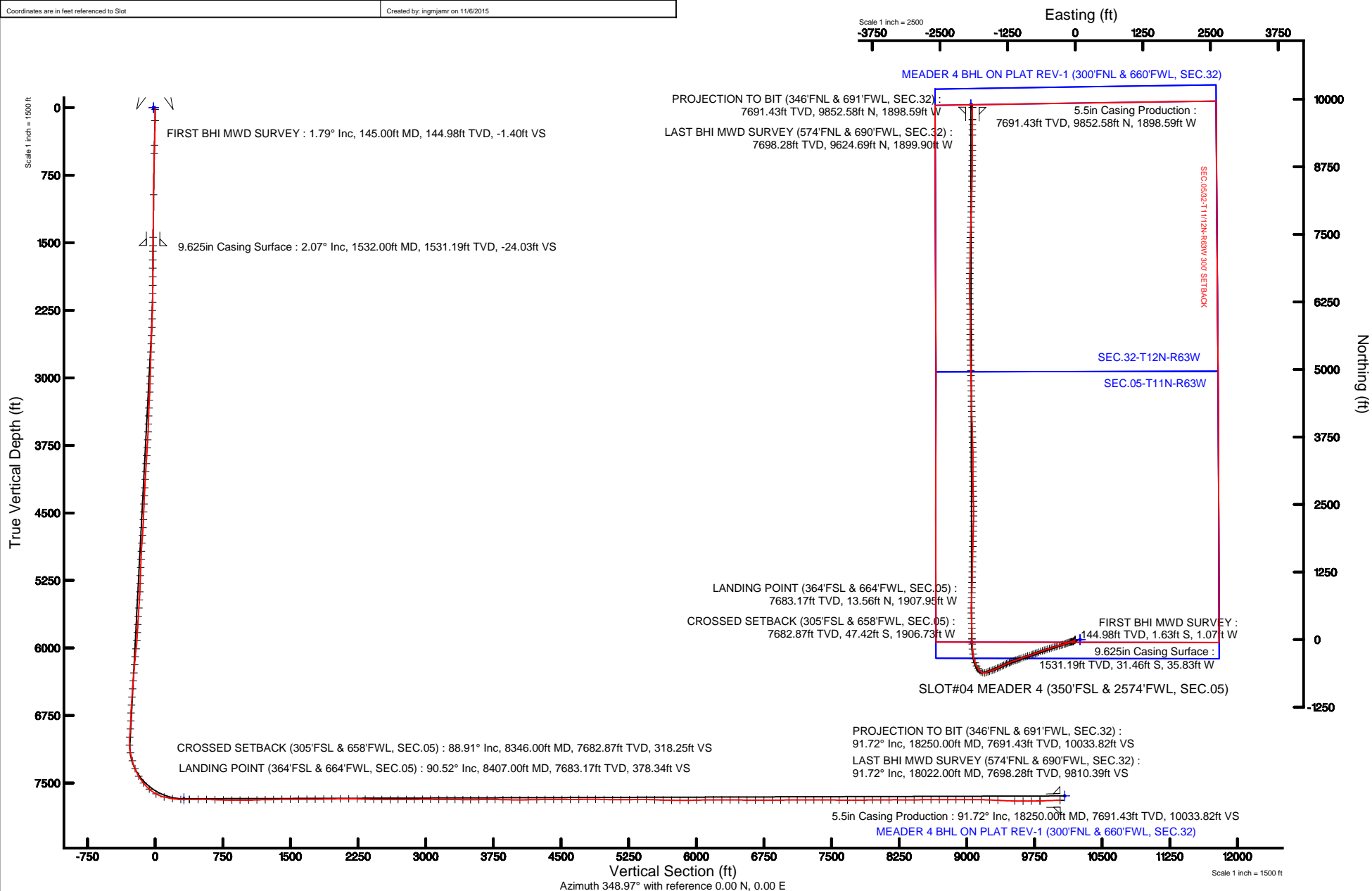
Plot reference wellpath is MEADER 4 PWP (REV-B.0)

True vertical depths are referenced to SAVANNA 802 (20'KB) (RKB)	Grid System: NAD83 / Lambert Colorado SP, Northern Zone (501), US feet
Measured depths are referenced to SAVANNA 802 (20'KB) (RKB)	North Reference: True north
SAVANNA 802 (20'KB) (RKB) to Mean Sea Level: 5357 feet	Scale: True distance
Mean Sea Level to Mud line (At Slot: SLOT#04 MEADER 4 (350'FSL & 2574'FWL, SEC.05)): 0 feet	Depths are in feet
Coordinates are in feet referenced to Slot	Created by: ingnjm on 11/6/2015



BGGM (1945.0 to 2017.0) Dip: 67.44° Field: 52895.1 nT
Magnetic North is 8.39 degrees East of True North (at 10/5/2015)

To correct azimuth from Magnetic to True add 8.39 degrees





Actual Wellpath Report

MEADER 4 AWP

Page 1 of 7



REFERENCE WELLPATH IDENTIFICATION

Operator	EXTRACTION OIL & GAS	Slot	SLOT#04 MEADER 4 (350'FSL & 2574'FWL, SEC.05)
Area	COLORADO	Well	MEADER 4
Field	WELD COUNTY (NAD83/TRUE NORTH)	Wellbore	MEADER 4 AWB
Facility	SEC.05-T11N-R63W		

REPORT SETUP INFORMATION

Projection System	NAD83 / Lambert Colorado SP, Northern Zone (501), US feet	Software System	WellArchitect® 4.1.1
North Reference	True	User	Ingmjmr
Scale	1.00003	Report Generated	11/6/2015 at 10:44:51 AM
Convergence at slot	0.67° East	Database/Source file	WA_DEN_Denver_Defn/MEADER_4_AWB.xml

WELLPATH LOCATION

	Local coordinates		Grid coordinates		Geographic coordinates	
	North[ft]	East[ft]	Easting[US ft]	Northing[US ft]	Latitude	Longitude
Slot Location	0.00	-90.09	3288137.18	1588822.49	40°56'42.108"N	104°27'25.290"W
Facility Reference Pt			3288227.27	1588823.55	40°56'42.108"N	104°27'24.116"W
Field Reference Pt			3185481.27	1419166.81	40°28'55.560"N	104°49'59.556"W

WELLPATH DATUM

Calculation method	Minimum curvature	SAVANNA 802 (20'KB) (RKB) to Facility Vertical Datum	5357.00ft
Horizontal Reference Pt	Slot	SAVANNA 802 (20'KB) (RKB) to Mean Sea Level	5357.00ft
Vertical Reference Pt	SAVANNA 802 (20'KB) (RKB)	SAVANNA 802 (20'KB) (RKB) to Mud Line at Slot (SLOT#04 MEADER 4 (350'FSL & 2574'FWL, SEC.05))	5357.00ft
MD Reference Pt	SAVANNA 802 (20'KB) (RKB)	Section Origin	N 0.00, E 0.00 ft
Field Vertical Reference	Mean Sea Level	Section Azimuth	348.97°



Actual Wellpath Report

MEADER 4 AWP

Page 2 of 7



REFERENCE WELLPATH IDENTIFICATION			
Operator	EXTRACTION OIL & GAS	Slot	SLOT#04 MEADER 4 (350'FSL & 2574'FWL, SEC.05)
Area	COLORADO	Well	MEADER 4
Field	WELD COUNTY (NAD83/TRUE NORTH)	Wellbore	MEADER 4 AWP
Facility	SEC.05-T11N-R63W		

WELLPATH DATA (183 stations) † = interpolated/extrapolated station

MD [ft]	Inclination [°]	Azimuth [°]	TVD [ft]	Vert Sect [ft]	North [ft]	East [ft]	DLS [°/100ft]	Comments
0.00†	0.000	213.310	0.00	0.00	0.00	0.00	0.00	
20.00	0.000	213.310	20.00	0.00	0.00	0.00	0.00	
145.00	1.790	213.310	144.98	-1.40	-1.63	-1.07	1.43	FIRST BHI MWD SURVEY
418.00	2.000	216.420	417.83	-7.67	-9.03	-6.24	0.09	
510.00	1.980	216.860	509.77	-9.82	-11.59	-8.15	0.03	
967.00	1.660	238.910	966.55	-17.38	-21.33	-18.55	0.17	
1440.00	2.340	240.910	1439.26	-22.73	-29.56	-32.86	0.14	
1596.00	1.910	226.950	1595.15	-25.09	-32.88	-37.54	0.43	
1691.00	4.320	250.550	1690.01	-26.46	-35.15	-42.07	2.82	
1785.00	6.890	258.320	1783.55	-27.04	-37.48	-50.93	2.84	
1880.00	7.230	259.660	1877.83	-27.03	-39.70	-62.40	0.40	
1975.00	7.240	259.230	1972.08	-26.93	-41.89	-74.16	0.06	
2070.00	9.110	255.900	2066.11	-27.31	-44.84	-87.33	2.03	
2165.00	9.280	252.240	2159.89	-28.61	-49.01	-101.92	0.64	
2260.00	11.840	251.930	2253.27	-30.70	-54.37	-118.48	2.70	
2355.00	12.550	251.960	2346.13	-33.16	-60.59	-137.56	0.75	
2451.00	14.840	250.790	2439.39	-36.18	-67.87	-159.09	2.40	
2545.00	14.860	250.280	2530.25	-39.71	-75.90	-181.81	0.14	
2640.00	17.220	252.250	2621.55	-43.20	-84.30	-206.67	2.55	
2735.00	17.240	250.950	2712.28	-46.81	-93.18	-233.37	0.41	
2829.00	20.160	254.760	2801.31	-49.94	-101.98	-262.17	3.37	
2924.00	19.890	255.700	2890.57	-52.07	-110.28	-293.63	0.44	
3019.00	19.090	254.230	2980.13	-54.27	-118.49	-324.24	0.99	
3113.00	19.080	253.130	3068.96	-57.10	-127.13	-353.73	0.38	
3208.00	18.960	251.740	3158.77	-60.63	-136.47	-383.25	0.49	
3301.00	18.330	249.510	3246.89	-64.93	-146.32	-411.30	1.02	
3396.00	21.730	253.240	3336.14	-69.14	-156.63	-442.14	3.82	
3490.00	21.400	254.100	3423.56	-72.34	-166.34	-475.29	0.49	
3585.00	21.200	253.370	3512.07	-75.49	-176.01	-508.42	0.35	
3680.00	21.230	252.480	3600.63	-79.11	-186.10	-541.28	0.34	
3774.00	21.230	250.820	3688.25	-83.44	-196.82	-573.59	0.64	
3869.00	21.400	250.370	3776.76	-88.47	-208.29	-606.16	0.25	
3963.00	21.920	250.050	3864.12	-93.76	-220.04	-638.80	0.57	
4058.00	22.080	249.900	3952.20	-99.32	-232.22	-672.24	0.18	
4153.00	20.810	249.830	4040.62	-104.82	-244.18	-704.85	1.34	
4247.00	18.510	249.260	4129.14	-109.99	-255.22	-734.48	2.46	
4342.00	15.760	247.540	4219.91	-115.09	-265.49	-760.51	2.94	
4437.00	18.170	250.540	4310.77	-119.82	-275.36	-786.40	2.70	
4531.00	18.300	251.540	4400.05	-123.88	-284.91	-814.22	0.36	
4626.00	21.990	253.750	4489.23	-127.42	-294.62	-845.46	3.97	
4720.00	23.120	253.600	4576.03	-130.75	-304.75	-880.06	1.20	
4814.00	23.510	252.900	4662.36	-134.46	-315.48	-915.68	0.51	
4909.00	22.660	248.140	4749.76	-139.91	-327.86	-950.78	2.16	
5003.00	22.690	247.130	4836.49	-147.03	-341.65	-984.29	0.42	
5098.00	19.210	251.890	4925.21	-152.72	-353.64	-1016.04	4.07	



Actual Wellpath Report

MEADER 4 AWP

Page 3 of 7



REFERENCE WELLPATH IDENTIFICATION			
Operator	EXTRACTION OIL & GAS	Slot	SLOT#04 MEADER 4 (350'FSL & 2574'FWL, SEC.05)
Area	COLORADO	Well	MEADER 4
Field	WELD COUNTY (NAD83/TRUE NORTH)	Wellbore	MEADER 4 AWB
Facility	SEC.05-T11N-R63W		

WELLPATH DATA (183 stations) † = interpolated/extrapolated station

MD [ft]	Inclination [°]	Azimuth [°]	TVD [ft]	Vert Sect [ft]	North [ft]	East [ft]	DLS [°/100ft]	Comments
5192.00	17.540	250.530	5014.41	-156.70	-363.16	-1044.09	1.83	
5287.00	15.760	250.260	5105.42	-160.76	-372.29	-1069.74	1.88	
5381.00	17.560	254.340	5195.48	-163.83	-380.43	-1095.41	2.28	
5476.00	16.440	253.520	5286.32	-166.27	-388.12	-1122.10	1.21	
5570.00	18.210	250.020	5376.06	-169.82	-396.91	-1148.66	2.18	
5665.00	16.730	246.790	5466.68	-175.01	-407.37	-1175.18	1.86	
5759.00	13.850	243.040	5557.34	-180.96	-417.81	-1197.65	3.24	
5854.00	15.140	244.630	5649.32	-187.15	-428.28	-1218.99	1.42	
5948.00	17.330	250.650	5739.57	-192.22	-438.18	-1243.30	2.94	
6042.00	19.030	248.940	5828.87	-196.91	-448.32	-1270.81	1.90	
6137.00	16.140	244.410	5919.43	-202.93	-459.60	-1297.18	3.36	
6231.00	18.720	237.970	6009.11	-211.62	-473.24	-1321.76	3.42	
6325.00	20.600	244.740	6097.64	-221.10	-488.30	-1349.51	3.14	
6420.00	21.860	248.410	6186.20	-228.45	-501.94	-1381.07	1.93	
6515.00	18.020	243.330	6275.49	-235.65	-515.05	-1410.66	4.43	
6609.00	18.880	244.390	6364.66	-243.40	-528.15	-1437.37	0.98	
6704.00	21.840	247.690	6453.72	-250.73	-541.51	-1467.58	3.34	
6799.00	17.650	246.800	6543.11	-257.22	-553.90	-1497.18	4.42	
6894.00	18.220	247.870	6633.50	-263.12	-565.16	-1524.18	0.69	
6988.00	20.030	253.430	6722.31	-267.50	-575.29	-1553.22	2.73	
7082.00	21.210	252.850	6810.29	-270.87	-584.90	-1584.90	1.27	
7177.00	18.000	247.270	6899.78	-275.68	-595.64	-1614.87	3.91	
7272.00	18.250	245.130	6990.06	-282.22	-607.57	-1641.91	0.75	
7366.00	22.270	263.710	7078.32	-284.27	-615.72	-1673.01	8.02	
7461.00	24.240	285.850	7165.77	-273.94	-612.36	-1709.74	9.38	
7555.00	22.010	301.470	7252.29	-253.30	-597.88	-1743.36	6.92	
7650.00	24.610	322.460	7339.68	-223.51	-572.85	-1770.65	9.11	
7745.00	31.460	328.250	7423.50	-182.57	-536.04	-1795.78	7.75	
7839.00	40.010	330.780	7499.73	-130.82	-488.72	-1823.49	9.23	
7934.00	49.000	339.740	7567.49	-66.23	-428.25	-1850.90	11.53	
8028.00	61.750	346.500	7620.83	10.53	-354.35	-1872.95	14.79	
8123.00	76.510	352.880	7654.61	98.98	-267.27	-1888.55	16.75	
8218.00	81.100	354.690	7673.05	191.81	-174.65	-1898.62	5.18	
8312.00	88.020	357.110	7681.96	284.64	-81.38	-1905.29	7.79	
8346.00†	88.915	358.034	7682.87	318.25	-47.42	-1906.73	3.78	CROSSED SETBACK (305'FSL & 658'FWL, SEC.05)
8407.00	90.520	359.690	7683.17	378.34	13.56	-1907.95	3.78	LANDING POINT (364'FSL & 664'FWL, SEC.05)
8506.00	91.720	359.840	7681.23	475.56	112.54	-1908.35	1.22	
8601.00	87.750	358.120	7681.67	569.09	207.50	-1910.04	4.55	
8696.00	87.870	357.360	7685.30	662.91	302.36	-1913.79	0.81	
8790.00	88.360	356.750	7688.39	755.93	396.18	-1918.61	0.83	
8885.00	89.320	359.850	7690.32	849.64	491.11	-1921.43	3.42	
8979.00	90.270	1.520	7690.65	941.68	585.09	-1920.31	2.04	
9074.00	90.890	1.510	7689.69	1034.40	680.06	-1917.79	0.65	
9169.00	91.970	2.980	7687.32	1126.83	774.95	-1914.07	1.92	
9264.00	90.890	1.920	7684.95	1219.18	869.83	-1910.02	1.59	



Actual Wellpath Report

MEADER 4 AWP

Page 4 of 7



REFERENCE WELLPATH IDENTIFICATION			
Operator	EXTRACTION OIL & GAS	Slot	SLOT#04 MEADER 4 (350'FSL & 2574'FWL, SEC.05)
Area	COLORADO	Well	MEADER 4
Field	WELD COUNTY (NAD83/TRUE NORTH)	Wellbore	MEADER 4 AWP
Facility	SEC.05-T11N-R63W		

WELLPATH DATA (183 stations)

MD [ft]	Inclination [°]	Azimuth [°]	TVD [ft]	Vert Sect [ft]	North [ft]	East [ft]	DLS [°/100ft]	Comments
9359.00	91.260	1.030	7683.17	1311.91	964.78	-1907.57	1.01	
9454.00	91.870	0.770	7680.57	1404.83	1059.73	-1906.08	0.70	
9549.00	89.590	1.130	7679.36	1497.74	1154.71	-1904.50	2.43	
9644.00	89.870	1.250	7679.81	1590.59	1249.68	-1902.53	0.32	
9738.00	89.960	1.720	7679.95	1682.36	1343.65	-1900.09	0.51	
9833.00	90.390	0.790	7679.66	1775.18	1438.63	-1898.01	1.08	
9928.00	91.010	1.190	7678.50	1868.09	1533.61	-1896.37	0.78	
10022.00	91.100	1.360	7676.77	1959.91	1627.57	-1894.28	0.20	
10117.00	90.610	0.940	7675.35	2052.76	1722.54	-1892.38	0.68	
10213.00	90.150	1.980	7674.71	2146.49	1818.50	-1889.93	1.18	
10307.00	88.300	2.260	7675.99	2238.01	1912.42	-1886.45	1.99	
10401.00	87.930	1.630	7679.08	2329.56	2006.32	-1883.26	0.78	
10496.00	88.860	0.440	7681.74	2422.42	2101.26	-1881.55	1.59	
10590.00	89.500	0.380	7683.08	2514.55	2195.25	-1880.88	0.68	
10684.00	90.120	0.360	7683.40	2606.69	2289.25	-1880.27	0.66	
10773.00	90.890	0.390	7682.61	2693.93	2378.24	-1879.69	0.87	
10865.00	89.960	359.200	7681.93	2784.29	2470.24	-1880.02	1.64	
10956.00	90.430	358.780	7681.62	2873.90	2561.22	-1881.62	0.69	
11048.00	90.890	358.580	7680.56	2964.58	2653.19	-1883.74	0.55	
11138.00	89.040	358.380	7680.61	3053.33	2743.15	-1886.13	2.07	
11230.00	89.660	358.610	7681.66	3144.06	2835.12	-1888.54	0.72	
11321.00	90.430	359.380	7681.59	3233.67	2926.10	-1890.14	1.20	
11414.00	88.640	359.420	7682.34	3325.13	3019.09	-1891.11	1.93	
11503.00	89.190	359.490	7684.03	3412.62	3108.07	-1891.96	0.62	
11590.00	90.090	0.150	7684.57	3498.07	3195.06	-1892.23	1.28	
11683.00	90.950	0.180	7683.73	3589.29	3288.06	-1891.96	0.93	
11774.00	91.690	0.400	7681.63	3678.50	3379.03	-1891.50	0.85	
11866.00	87.960	358.760	7681.91	3768.90	3471.01	-1892.18	4.43	
11955.00	88.660	358.290	7684.54	3856.63	3559.94	-1894.47	0.95	
12049.00	89.410	358.840	7686.12	3949.30	3653.90	-1896.82	0.99	
12144.00	90.000	358.990	7686.61	4042.87	3748.88	-1898.62	0.64	
12239.00	90.730	358.200	7686.01	4136.53	3843.85	-1900.95	1.13	
12334.00	91.440	358.490	7684.21	4230.25	3938.79	-1903.69	0.81	
12429.00	89.960	357.860	7683.05	4324.01	4033.73	-1906.72	1.69	
12524.00	90.860	357.840	7682.37	4417.87	4128.66	-1910.28	0.95	
12619.00	89.680	359.220	7681.92	4511.55	4223.63	-1912.72	1.91	
12713.00	90.270	358.830	7681.96	4604.10	4317.61	-1914.32	0.75	
12808.00	90.800	359.180	7681.07	4697.64	4412.59	-1915.97	0.67	
12903.00	91.350	359.300	7679.29	4791.11	4507.57	-1917.23	0.59	
12997.00	88.150	358.500	7679.70	4883.68	4601.54	-1919.03	3.51	
13093.00	88.520	358.310	7682.49	4978.34	4697.46	-1921.70	0.43	
13187.00	89.190	358.000	7684.37	5071.12	4791.39	-1924.73	0.79	
13283.00	90.150	358.800	7684.92	5165.82	4887.35	-1927.41	1.30	
13377.00	90.950	358.650	7684.02	5258.46	4981.32	-1929.50	0.87	
13472.00	91.290	358.960	7682.16	5352.04	5076.28	-1931.48	0.48	



Actual Wellpath Report

MEADER 4 AWP

Page 5 of 7



REFERENCE WELLPATH IDENTIFICATION			
Operator	EXTRACTION OIL & GAS	Slot	SLOT#04 MEADER 4 (350'FSL & 2574'FWL, SEC.05)
Area	COLORADO	Well	MEADER 4
Field	WELD COUNTY (NAD83/TRUE NORTH)	Wellbore	MEADER 4 AWP
Facility	SEC.05-T11N-R63W		

WELLPATH DATA (183 stations)

MD [ft]	Inclination [°]	Azimuth [°]	TVD [ft]	Vert Sect [ft]	North [ft]	East [ft]	DLS [°/100ft]	Comments
13567.00	87.990	358.040	7682.76	5445.71	5171.23	-1933.97	3.61	
13661.00	88.210	357.800	7685.88	5538.52	5265.12	-1937.38	0.35	
13756.00	88.360	359.910	7688.72	5632.06	5360.05	-1939.27	2.23	
13851.00	88.860	359.860	7691.02	5725.31	5455.02	-1939.47	0.53	
13945.00	89.840	359.830	7692.09	5817.62	5549.02	-1939.72	1.04	
14041.00	90.580	359.850	7691.74	5911.90	5645.01	-1939.99	0.77	
14135.00	91.260	0.520	7690.23	6004.09	5739.00	-1939.68	1.02	
14230.00	92.030	0.100	7687.50	6097.19	5833.96	-1939.17	0.92	
14324.00	89.590	359.350	7686.17	6189.53	5927.94	-1939.62	2.72	
14420.00	90.000	359.470	7686.52	6283.94	6023.94	-1940.61	0.44	
14514.00	89.410	358.830	7687.00	6376.45	6117.92	-1942.00	0.93	
14608.00	89.500	357.170	7687.89	6469.28	6211.86	-1945.29	1.77	
14702.00	88.640	358.770	7689.42	6562.11	6305.78	-1948.61	1.93	
14797.00	90.060	359.830	7690.50	6655.56	6400.77	-1949.77	1.87	
14892.00	90.520	359.480	7690.02	6748.91	6495.76	-1950.35	0.61	
14986.00	89.810	0.510	7689.75	6841.17	6589.76	-1950.35	1.33	
15081.00	90.760	0.650	7689.27	6934.23	6684.75	-1949.39	1.01	
15176.00	91.470	1.300	7687.42	7027.13	6779.72	-1947.78	1.01	
15271.00	89.440	1.080	7686.67	7119.97	6874.69	-1945.80	2.15	
15366.00	89.780	0.720	7687.32	7212.92	6969.68	-1944.31	0.52	
15460.00	90.120	0.710	7687.40	7304.95	7063.67	-1943.14	0.36	
15555.00	90.730	0.880	7686.69	7397.93	7158.66	-1941.82	0.67	
15650.00	88.640	0.820	7687.22	7490.89	7253.64	-1940.41	2.20	
15745.00	89.220	0.830	7688.99	7583.85	7348.61	-1939.04	0.61	
15839.00	89.810	1.300	7689.79	7675.75	7442.59	-1937.30	0.80	
15934.00	90.270	1.840	7689.72	7768.47	7537.56	-1934.69	0.75	
16028.00	90.860	1.870	7688.79	7860.09	7631.50	-1931.65	0.63	
16123.00	89.900	1.990	7688.16	7952.67	7726.45	-1928.45	1.02	
16218.00	90.460	2.150	7687.86	8045.20	7821.38	-1925.02	0.61	
16313.00	91.130	2.450	7686.55	8137.63	7916.30	-1921.21	0.77	
16408.00	89.380	1.100	7686.12	8230.26	8011.24	-1918.27	2.33	
16503.00	89.810	1.330	7686.80	8323.10	8106.22	-1916.25	0.51	
16598.00	90.300	1.510	7686.70	8415.86	8201.19	-1913.90	0.55	
16693.00	91.200	1.910	7685.46	8508.51	8296.14	-1911.06	1.04	
16788.00	89.840	0.360	7684.60	8601.37	8391.11	-1909.18	2.17	
16883.00	90.240	1.590	7684.53	8694.29	8486.10	-1907.57	1.36	
16978.00	89.380	0.520	7684.85	8787.18	8581.08	-1905.82	1.45	
17073.00	90.830	0.960	7684.67	8880.18	8676.07	-1904.59	1.60	
17167.00	88.920	0.030	7684.88	8972.28	8770.06	-1903.78	2.26	
17262.00	90.270	1.610	7685.55	9065.25	8865.04	-1902.42	2.19	
17357.00	89.690	1.110	7685.58	9158.04	8960.01	-1900.16	0.81	
17451.00	87.280	359.760	7688.07	9250.12	9053.97	-1899.45	2.94	
17547.00	87.500	359.920	7692.44	9344.30	9149.87	-1899.72	0.28	
17737.00	88.450	359.470	7699.15	9530.86	9339.74	-1900.73	0.55	
17831.00	89.530	359.790	7700.81	9623.23	9433.72	-1901.33	1.20	

REFERENCE WELLPATH IDENTIFICATION			
Operator	EXTRACTION OIL & GAS	Slot	SLOT#04 MEADER 4 (350'FSL & 2574'FWL, SEC.05)
Area	COLORADO	Well	MEADER 4
Field	WELD COUNTY (NAD83/TRUE NORTH)	Wellbore	MEADER 4 AWB
Facility	SEC.05-T11N-R63W		

WELLPATH DATA (183 stations)								
MD [ft]	Inclination [°]	Azimuth [°]	TVD [ft]	Vert Sect [ft]	North [ft]	East [ft]	DLS [°/100ft]	Comments
17926.00	90.890	0.800	7700.46	9716.37	9528.72	-1900.85	1.78	
18022.00	91.720	0.330	7698.28	9810.39	9624.69	-1899.90	0.99	LAST BHI MWD SURVEY (574'FNL & 690'FWL, SEC.32)
18250.00	91.720	0.330	7691.43	10033.82	9852.58	-1898.59	0.00	PROJECTION TO BIT (346'FNL & 691'FWL, SEC.32)

HOLE & CASING SECTIONS - Ref Wellbore: MEADER 4 AWB Ref Wellpath: MEADER 4 AWP									
String/Diameter	Start MD [ft]	End MD [ft]	Interval [ft]	Start TVD [ft]	End TVD [ft]	Start N/S [ft]	Start E/W [ft]	End N/S [ft]	End E/W [ft]
13.5in Open Hole	20.00	1532.00	1512.00	20.00	1531.19	0.00	0.00	-31.46	-35.83
9.625in Casing Surface	20.00	1532.00	1512.00	20.00	1531.19	0.00	0.00	-31.46	-35.83
8.75in Open Hole	1532.00	18250.00	16718.00	1531.19	7691.43	-31.46	-35.83	9852.58	-1898.59
5.5in Casing Production	20.00	18250.00	18230.00	20.00	7691.43	0.00	0.00	9852.58	-1898.59

TARGETS								
Name	TVD [ft]	North [ft]	East [ft]	Grid East [US ft]	Grid North [US ft]	Latitude	Longitude	Shape
SEC.05-T11N-R63W	0.00	0.00	90.09	3288227.27	1588823.55	40°56'42.108"N	104°27'24.116"W	polygon
SEC.32-T12N-R63W	0.00	0.00	90.09	3288227.27	1588823.55	40°56'42.108"N	104°27'24.116"W	polygon
MEADER 4 BHL ON PLAT REV-1 (300'FNL & 660'FWL, SEC.32)	7643.00	9898.72	-1929.46	3286091.38	1598698.11	40°58'19.913"N	104°27'50.443"W	point
MEADER 4 LP ON PLAT REV-1 (300'FSL 7 660'FWL, SEC.05)	7675.00	-47.29	-1913.66	3286224.15	1588752.70	40°56'41.640"N	104°27'50.227"W	point
MEADER 4 BHL ON PLAT (300'FNL & 660'FWL, SEC.32)	7760.00	9898.70	-1929.47	3286091.36	1598698.09	40°58'19.913"N	104°27'50.443"W	point
MEADER 4 LP ON PLAT (300'FSL 7 660'FWL, SEC.05)	7760.00	-47.29	-1913.68	3286224.14	1588752.70	40°56'41.640"N	104°27'50.227"W	point
SEC.05/32-T11/12N-R63W 300' SETBACK	7760.00	0.00	90.09	3288227.27	1588823.55	40°56'42.108"N	104°27'24.116"W	polygon

WELLPATH COMPOSITION - Ref Wellbore: MEADER 4 AWB Ref Wellpath: MEADER 4 AWP					
Start MD [ft]	End MD [ft]	Positional Uncertainty Model	Log Name/Comment	Wellbore	
20.00	1440.00	Custom NaviTrak (MagCorr) (AT Curve sf 0.01)	BHI MWD/NAVITRAK (MAGCORR) 13.5" HOLE <145-1440>	MEADER 4 AWB	
1440.00	8407.00	Custom NaviTrak (MagCorr) (AT Curve sf 0.01)	BHI MWD/NAVITRAK (MAGCORR) 8.75" HOLE <1596-8407>	MEADER 4 AWB	
8407.00	18022.00	OnTrak (MagCorr)	BHI MWD/ONTRAK (MAGCORR) 8.75" HOLE <8506-18022>	MEADER 4 AWB	
18022.00	18250.00	Blind Drilling (std)	Projection to bit	MEADER 4 AWB	



Actual Wellpath Report

MEADER 4 AWP

Page 7 of 7



REFERENCE WELLPATH IDENTIFICATION			
Operator	EXTRACTION OIL & GAS	Slot	SLOT#04 MEADER 4 (350'FSL & 2574'FWL, SEC.05)
Area	COLORADO	Well	MEADER 4
Field	WELD COUNTY (NAD83/TRUE NORTH)	Wellbore	MEADER 4 AWB
Facility	SEC.05-T11N-R63W		

WELLPATH COMMENTS				
MD [ft]	Inclination [°]	Azimuth [°]	TVD [ft]	Comment
145.00	1.790	213.310	144.98	FIRST BHI MWD SURVEY
8346.00	88.915	358.034	7682.87	CROSSED SETBACK (305'FSL & 658'FWL, SEC.05)
8407.00	90.520	359.690	7683.17	LANDING POINT (364'FSL & 664'FWL, SEC.05)
18022.00	91.720	0.330	7698.28	LAST BHI MWD SURVEY (574'FNL & 690'FWL, SEC.32)
18250.00	91.720	0.330	7691.43	PROJECTION TO BIT (346'FNL & 691'FWL, SEC.32)