

DAY 02

0 FT/24HRS

-WOB 11.6K
PP 2946
RPM 90
SPM 79/79

MD 2517 TVD 2503.98
INC 10.74 AZ 146.54
VS -130

MD 2610 TVD 2595.49
INC 9.82 AZ 147.09
VS -142.52

MD 2703 TVD 2687.15
INC 9.68 AZ 148.6
VS -154.58

ROP (Ft/Hr)
Gamma (API)

1500
250

2500

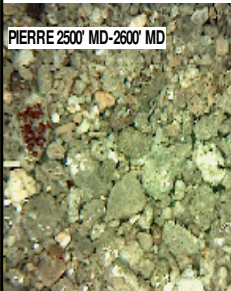
2550

2600

2650

2700

PIERRE 2500' MD-2600' MD



SIZE: 8.75", MAKE: HDBS, TYPE:
SF56, SERIAL #: 12694340, IN @ 1135'
MD

PIERRE
BEFORE LOGGING DEPTH

2500' MD-2600' MD: SLTST: 60% LTGY
- MEDLTGY, FRI, FN TO MED GRN,
W SRTD, CALC CMT, SANDY, IMBD
PYR, INTGR POR, NO STN, NO
FLOR, NO O FLOR, NO CUT, NO
RNG

2600' MD-2700' MD: SLTST: 60% LTGY
- MEDLTGY, FRI, FN TO MED GRN,
W SRTD, CALC CMT, SANDY, IMBD
PYR, INTGR POR, NO STN, NO
FLOR, NO O FLOR, NO CUT, NO
RNG

DEPTH 1135'
WT 8.50
VIS 27
PH 8.2
FIL 160.0
CL 300
CAL 300
H2O 98.5
OIL 0.0
LGS 10.7
GELS 1/1/3
PV 1
YP 2
CK 3/0
SOL 1.2

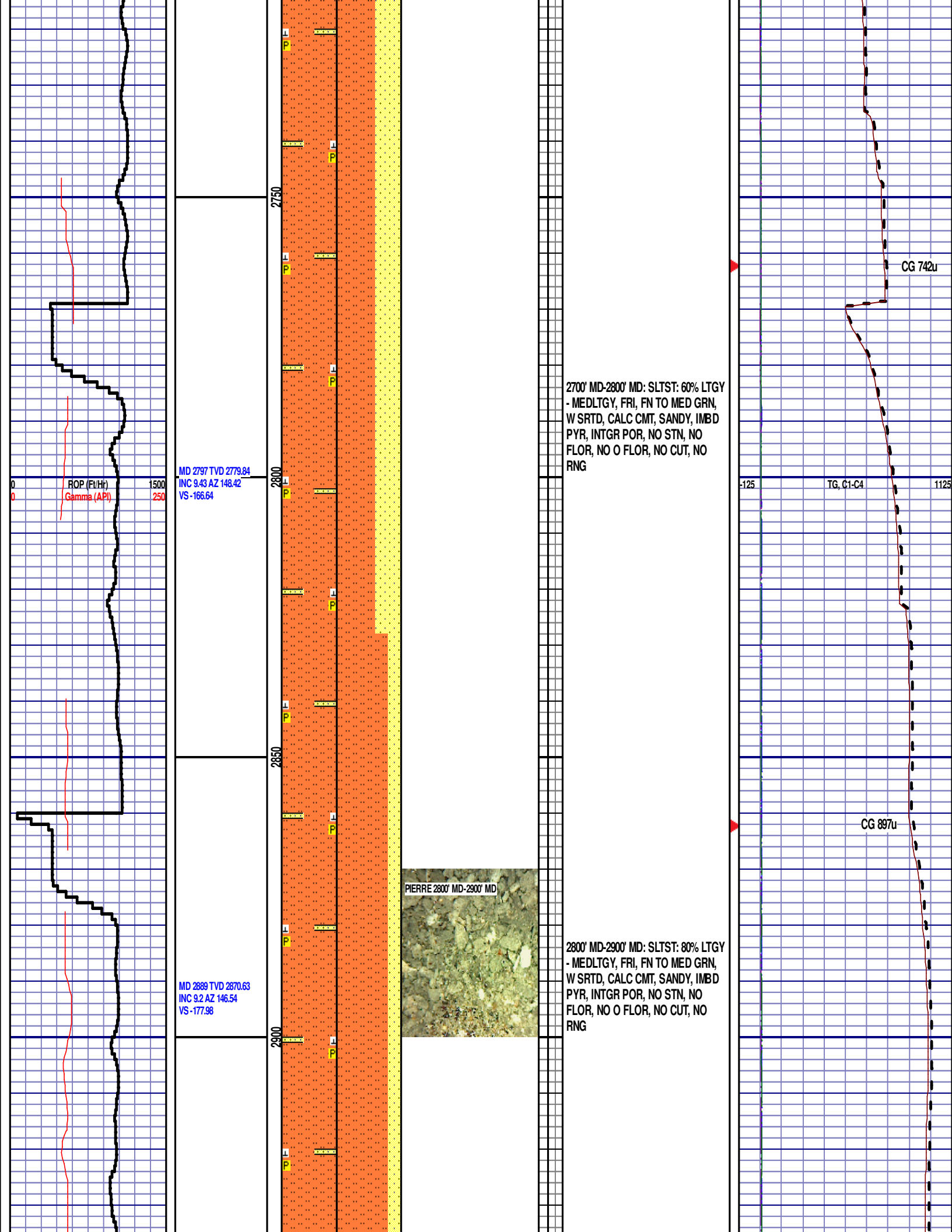
CG 542u

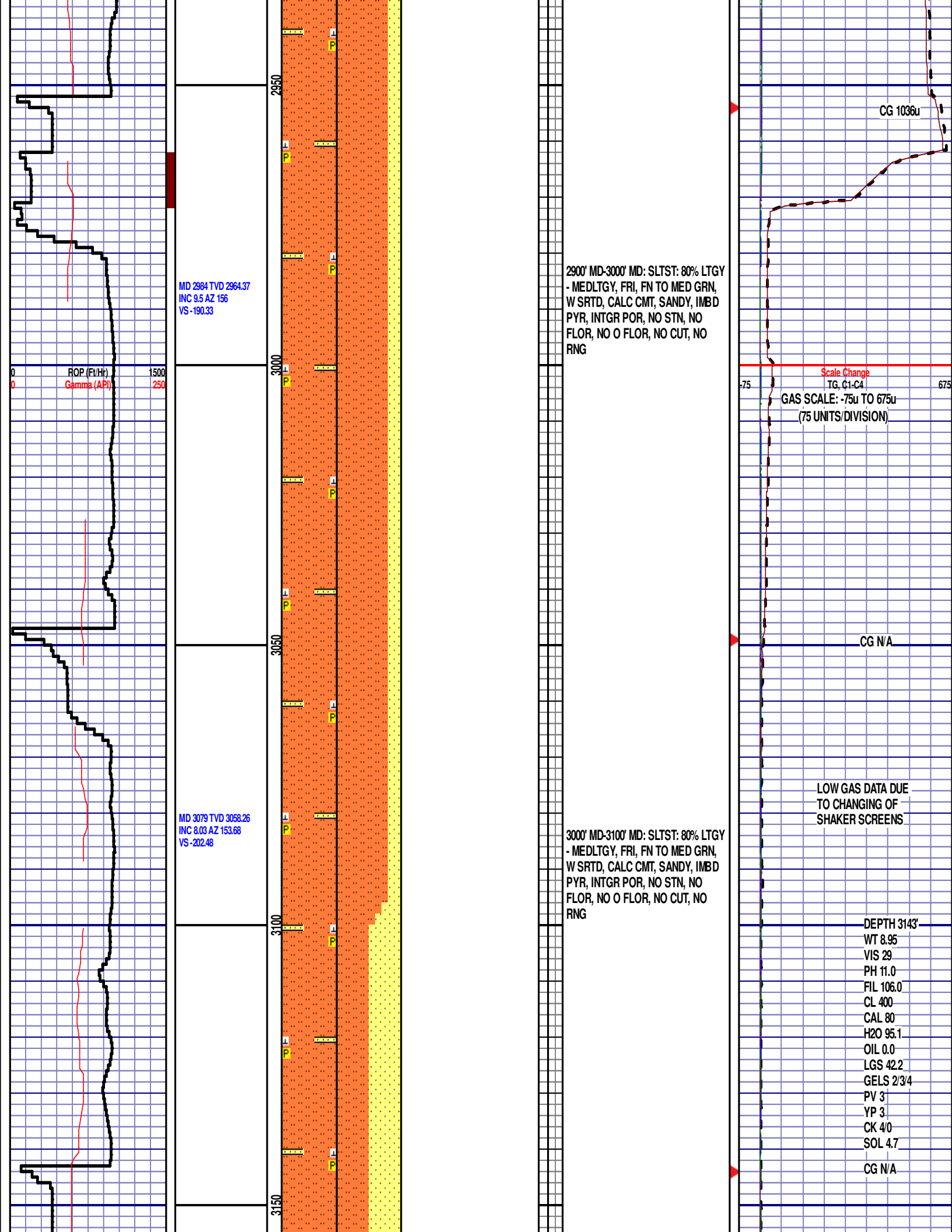
-125

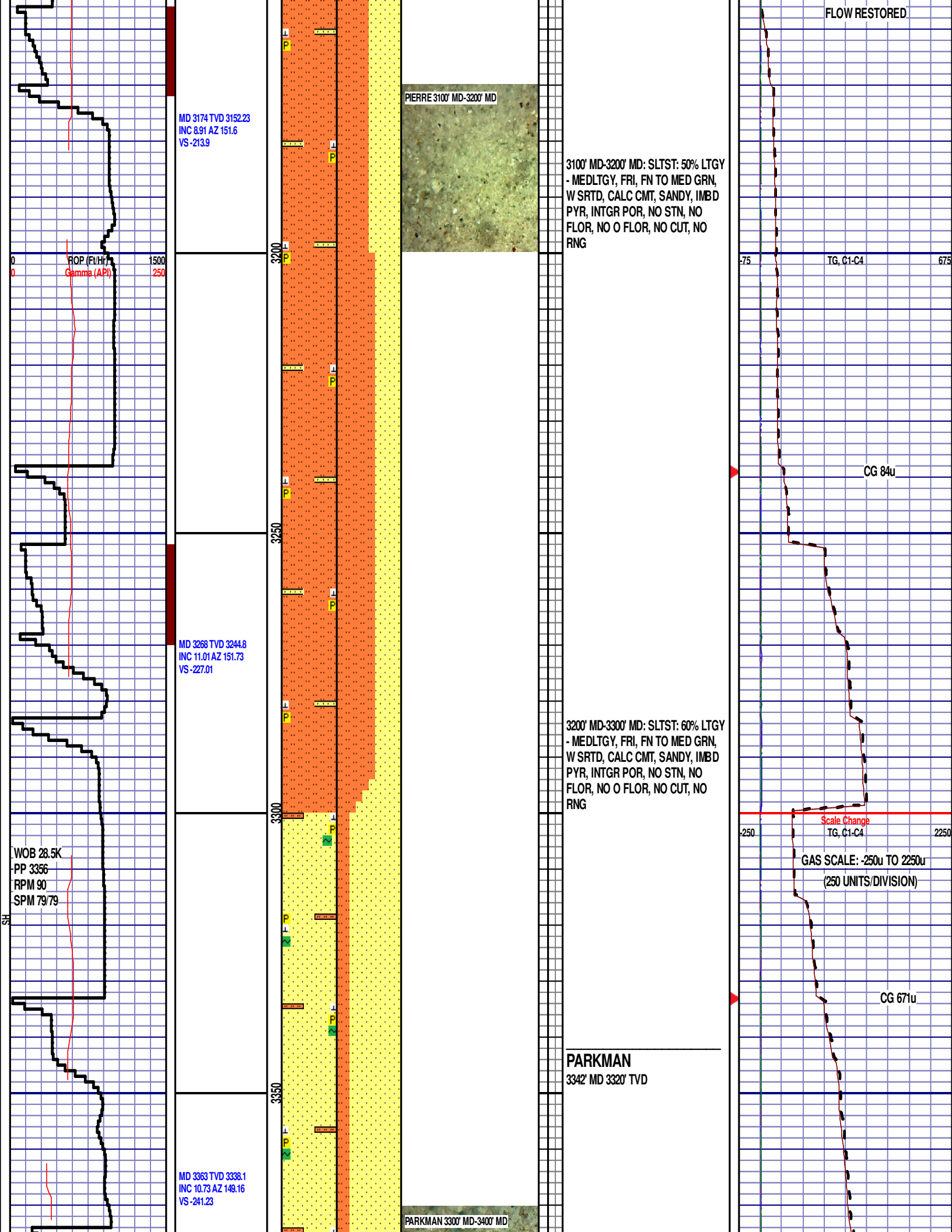
TG, C1-C4

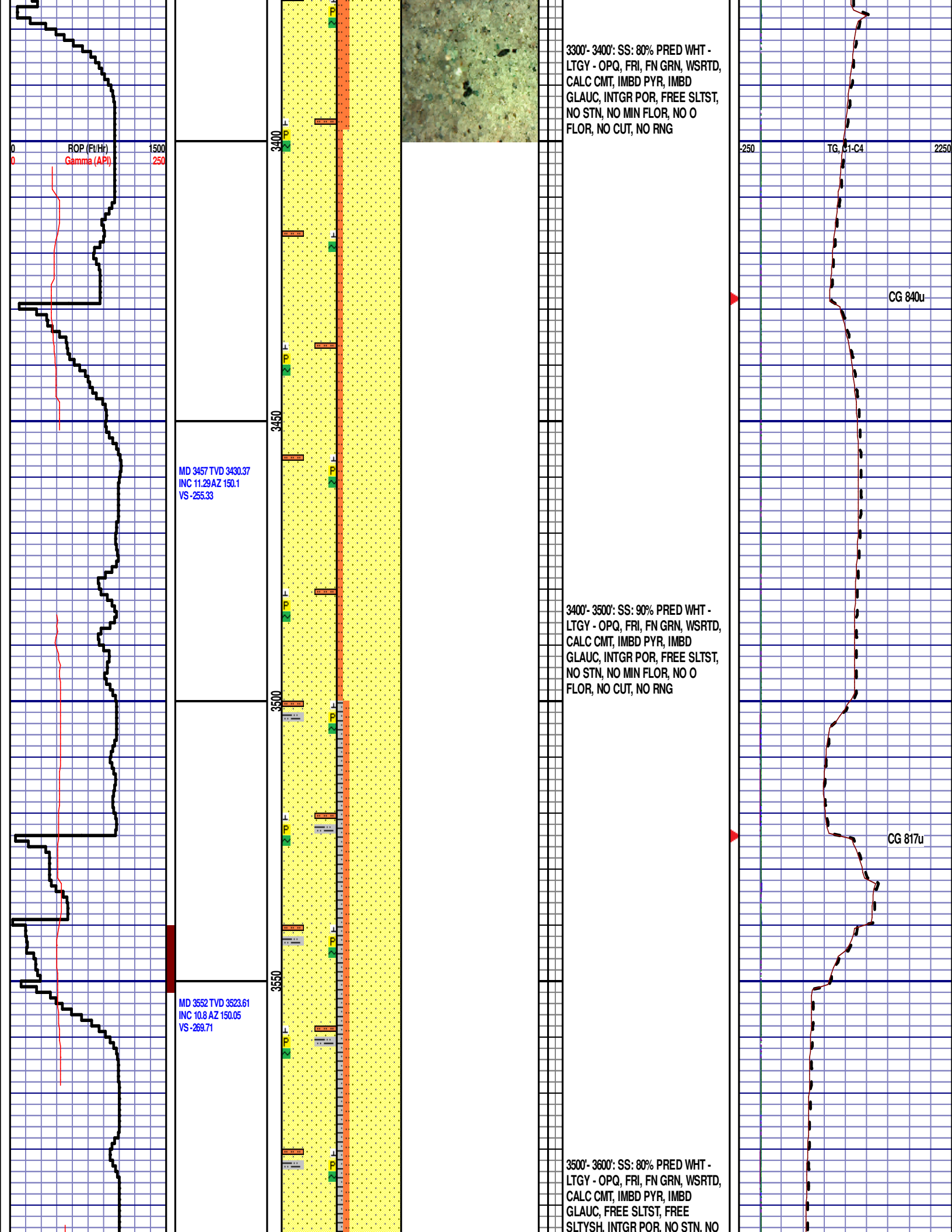
1125

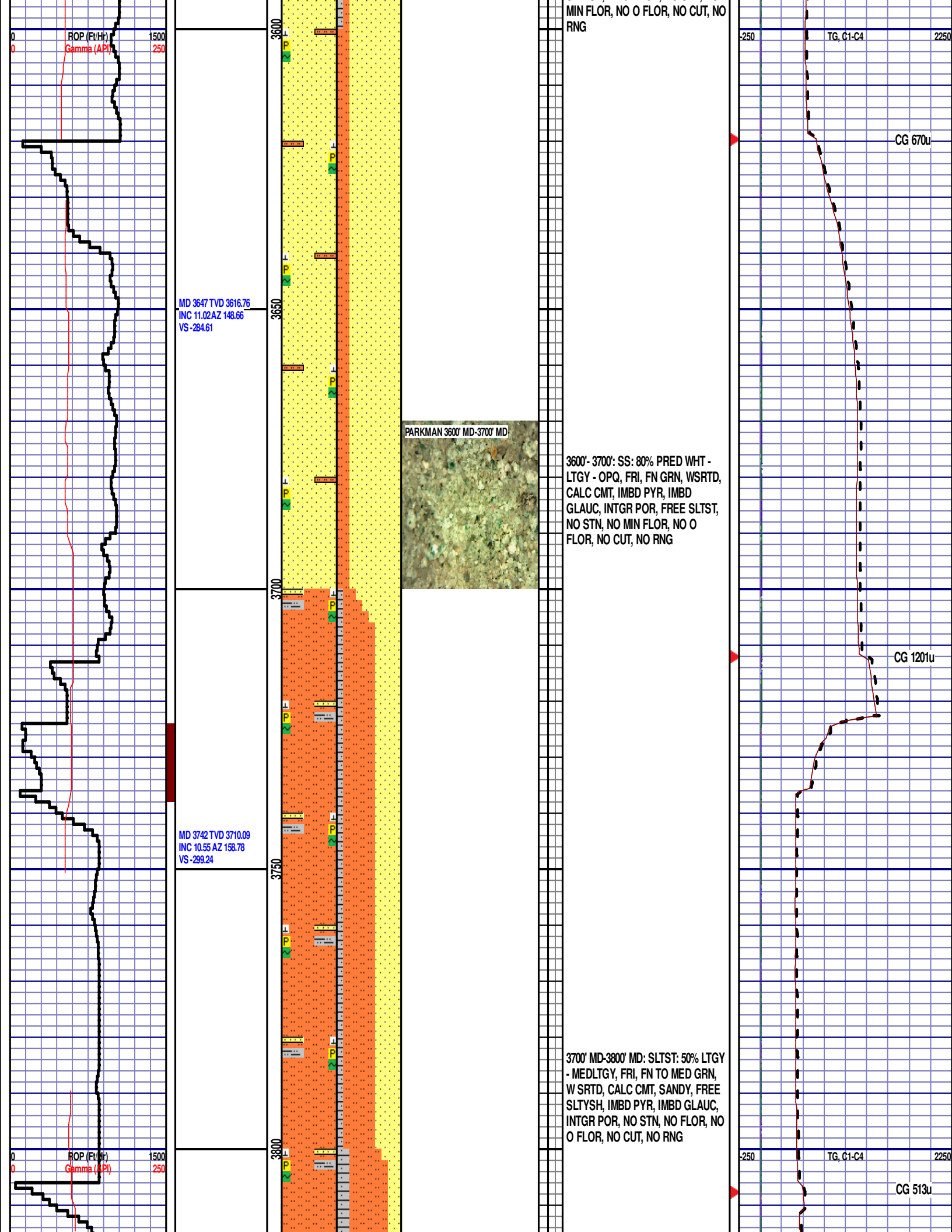
CG 351u











MD 3836 TVD 3802.52
INC 10.44 AZ 158.06
VS -314.15

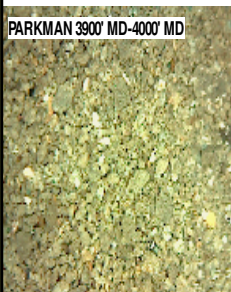
MD 3930 TVD 3895.04
INC 9.89 AZ 155.94
VS -328.4

MD 4025 TVD 3988.69
INC 9.43 AZ 154.47
VS -341.82

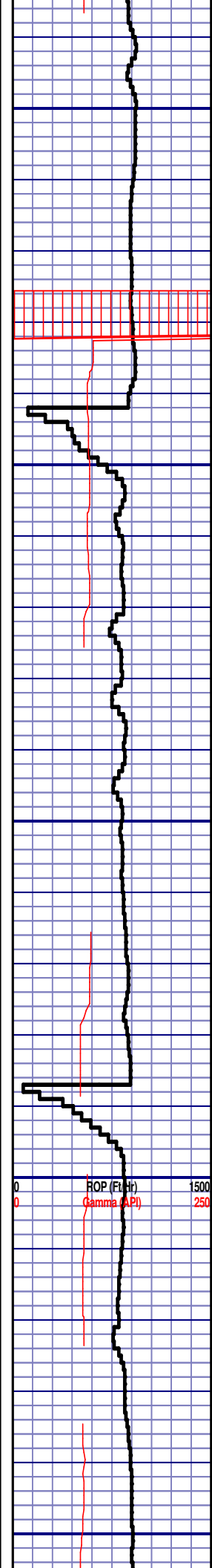
3800' MD-3900' MD: SLTST: 60% LTGY
- MEDLTGY, FRI, FN TO MED GRN,
W SRTD, CALC CMT, SANDY, FREE
SLTYSH, IMBD PYR, IMBD GLAUC,
INTGR POR, NO STN, NO FLOR, NO
O FLOR, NO CUT, NO RNG

3900' MD-4000' MD: SLTST: 80% LTGY
- MEDLTGY, FRI, FN TO MED GRN,
W SRTD, CALC CMT, SANDY, FREE
SLTYSH, IMBD PYR, TR IMBD
GLAUC, INTGR POR, NO STN, NO
FLOR, NO O FLOR, NO CUT, NO
RNG

PARKMAN 3900' MD-4000' MD

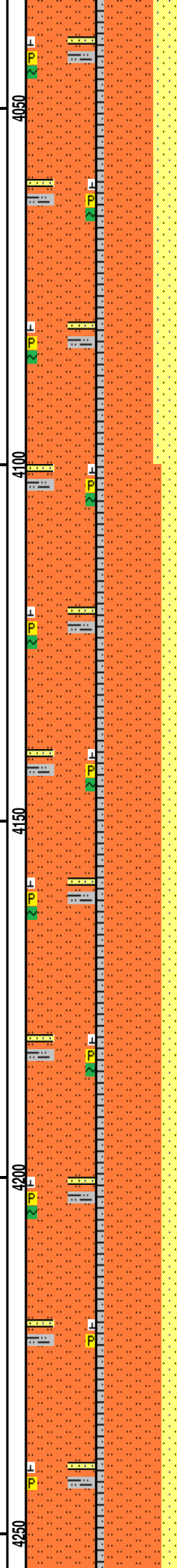


SUSSEX



MD 4119 TVD 4081.49
INC 8.91 AZ 153.69
VS -354.28

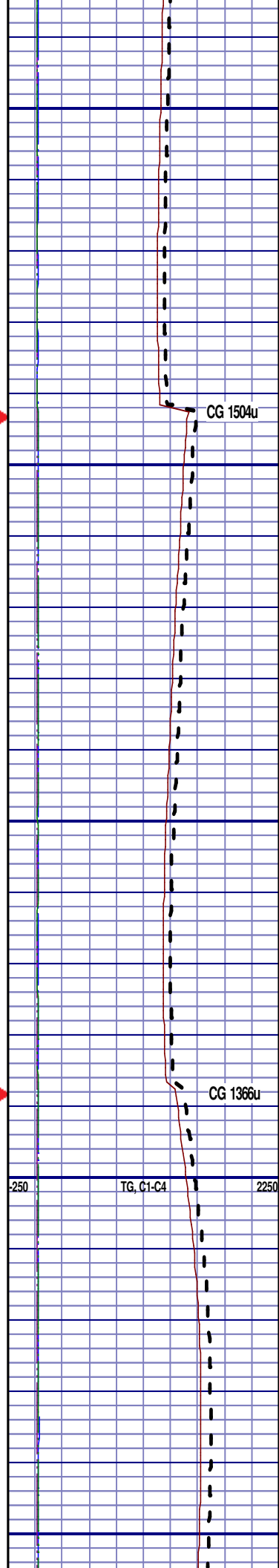
MD 4214 TVD 4175.41
INC 8.4 AZ 155.97
VS -366.26



4030' MD 3993' TVD

4000' MD-4100' MD: SLTST: 60% LTGY
- MEDLTGY, FRI, FN TO MED GRN,
W SRTD, CALC CMT, SANDY, FREE
SLTYSH, IMBD PYR, TR IMBD
GLAUC, INTGR POR, NO STN, NO
FLOR, NO O FLOR, NO CUT, NO
RNG

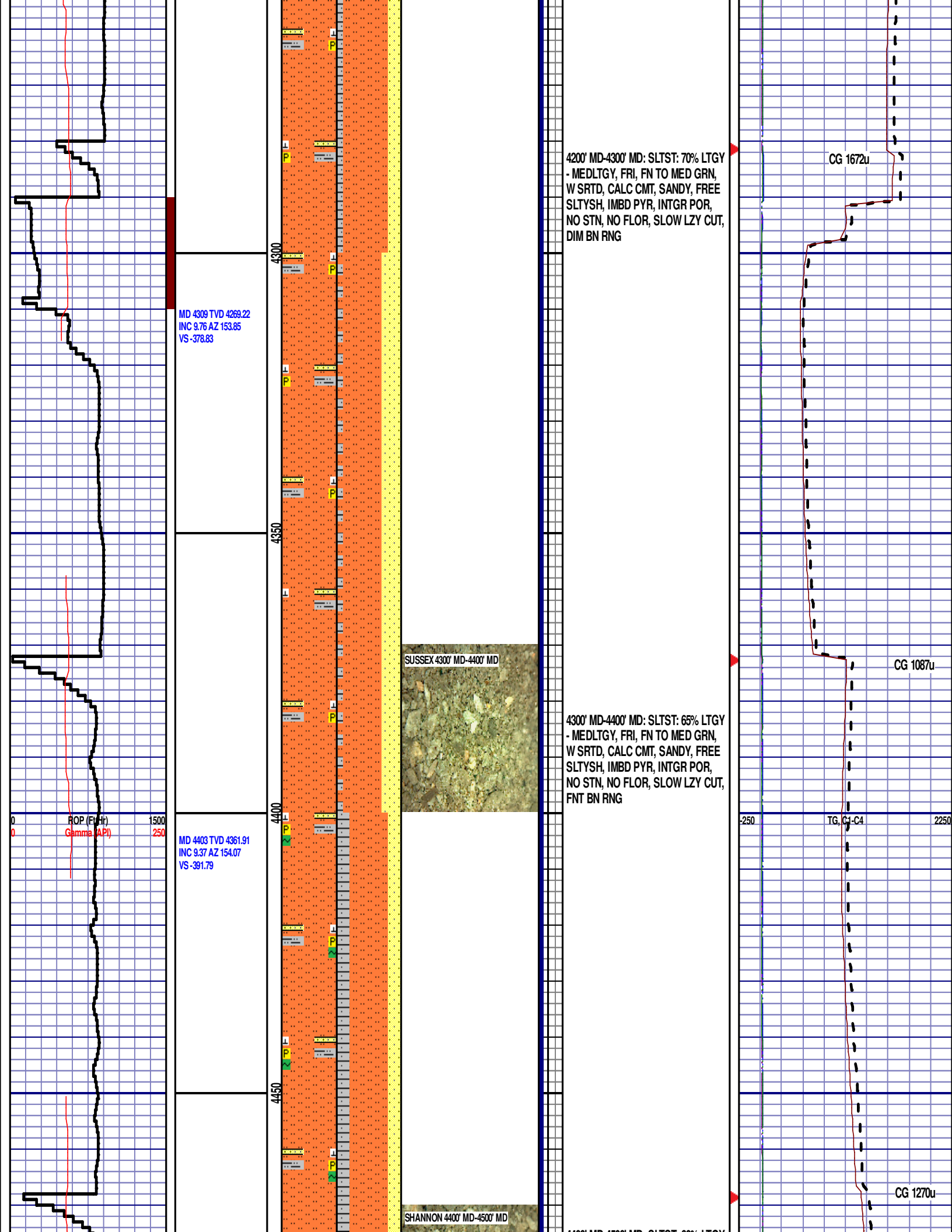
4100' MD-4200' MD: SLTST: 70% LTGY
- MEDLTGY, FRI, FN TO MED GRN,
W SRTD, CALC CMT, SANDY, FREE
SLTYSH, IMBD PYR, TR IMBD
GLAUC, INTGR POR, NO STN, NO
FLOR, NO O FLOR, SLOW LZY CUT,
DIM YLW RNG

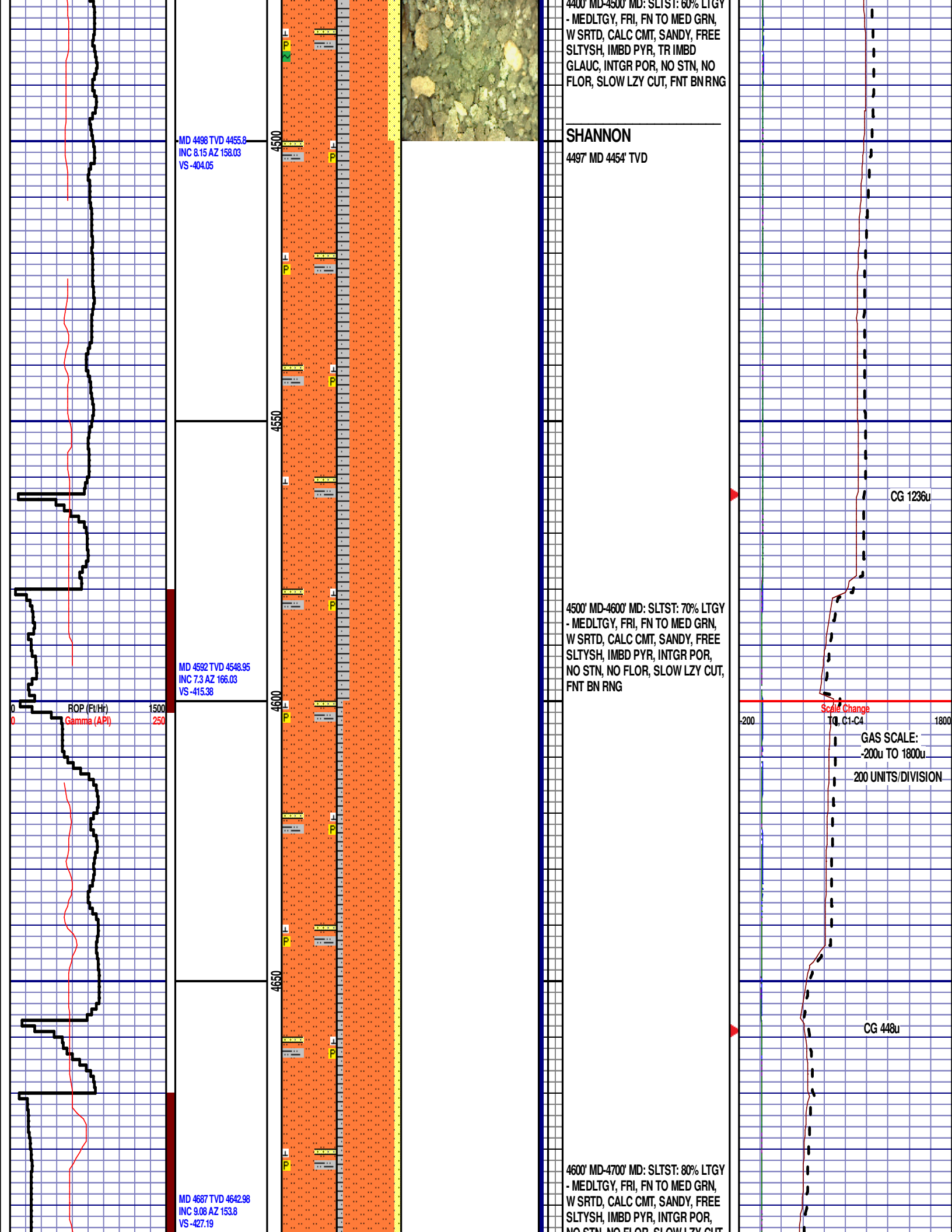


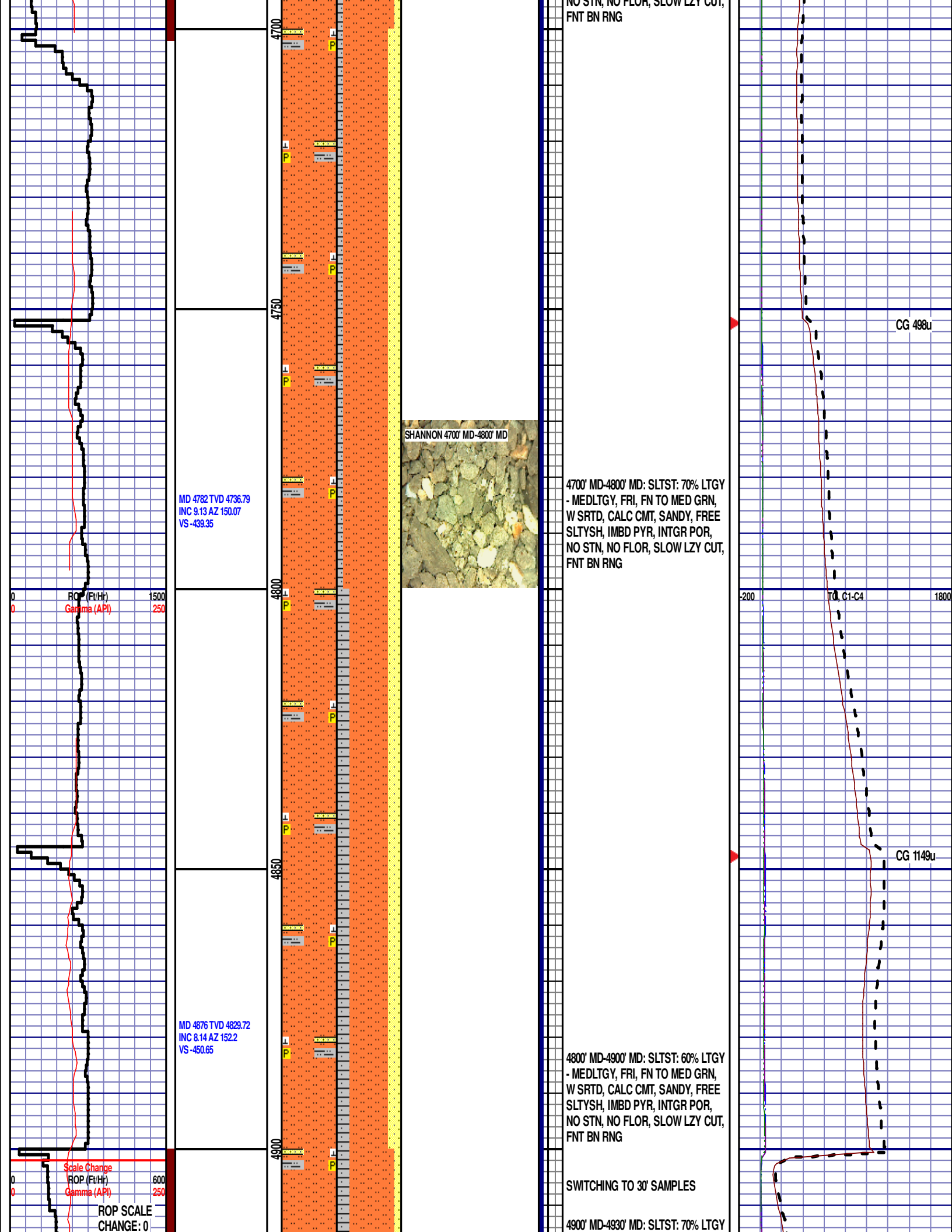
CG 1504u

CG 1366u

TG, C1-C4







NO STN, NO FLOR, SLOW LZY CUT,
FNT BN RNG

CG 498u

MD 4782 TVD 4736.79
INC 8.13 AZ 150.07
VS -439.35

SHANNON 4700' MD-4800' MD

4700' MD-4800' MD: SLTST: 70% LTGY
- MEDLTGY, FRI, FN TO MED GRN,
W SRTD, CALC CMT, SANDY, FREE
SLTYSH, IMBD PYR, INTGR POR,
NO STN, NO FLOR, SLOW LZY CUT,
FNT BN RNG

-200 1800
T0, C1-C4

CG 1149u

MD 4876 TVD 4829.72
INC 8.14 AZ 152.2
VS -450.65

4800' MD-4900' MD: SLTST: 60% LTGY
- MEDLTGY, FRI, FN TO MED GRN,
W SRTD, CALC CMT, SANDY, FREE
SLTYSH, IMBD PYR, INTGR POR,
NO STN, NO FLOR, SLOW LZY CUT,
FNT BN RNG

SWITCHING TO 30' SAMPLES

4900' MD-4930' MD: SLTST: 70% LTGY

Scale Change
ROP (Ft/Hr)
Gamma (API)

ROP SCALE
CHANGE: 0

TO 600
WOB 12.2K
PP 3372
RPM 0
SPM 78/78

MD 4971 TVD 4922.23
INC 17.94 AZ 125.18
VS -462.87

ROP (Ft/Hr)
Gamma (API)

600
250

MD 5066 TVD 5012.14
INC 19.85 AZ 113.26
VS -473.86

4950

5000

5050

5100

TEEPEE BUTTES 5080' MD - 5110' MD



- MEDLTGY, FRI, FN TO MED GRN,
W SRTD, CALC CMT, SANDY, FREE
SLTYSH, IMBD PYR, INTGR POR,
NO STN, NO FLOR, SLOW LZ CUT,
FNT BN RNG

4930' MD-4960' MD: SLTST: 80% LTGY
- MEDLTGY, FRI, FN TO MED GRN,
W SRTD, CALC CMT, SANDY, FREE
SLTYSH, IMBD PYR, INTGR POR,
NO STN, NO FLOR, SLOW LZ CUT,
FNT BN RNG

4960' MD-4990' MD: SLTST: 80% LTGY
- MEDLTGY, FRI, FN TO MED GRN,
W SRTD, CALC CMT, SANDY, FREE
SLTYSH, IMBD PYR, INTGR POR,
NO STN, NO FLOR, SLOW LZ CUT,
FNT BN RNG

4990' MD-5020' MD: SLTST: 70% LTGY
- MEDLTGY, FRI, FN TO MED GRN,
W SRTD, CALC CMT, SANDY, FREE
SLTYSH, IMBD PYR, INTGR POR,
NO STN, NO FLOR, SLOW LZ CUT,
FNT BN RNG

5020' MD-5050' MD: SLTST: 80% LTGY
- MEDLTGY, FRI, FN TO MED GRN,
W SRTD, CALC CMT, SANDY, FREE
SLTYSH, IMBD PYR, INTGR POR,
NO STN, NO FLOR, SLOW LZ CUT,
FNT BN RNG

5050' MD-5080' MD: SLTST: 75% LTGY
- MEDLTGY, FRI, FN TO MED GRN,
W SRTD, CALC CMT, SANDY, FREE
SLTYSH, IMBD PYR, INTGR POR,
NO STN, NO FLOR, SLOW LZ CUT,
FNT BN RNG

TEEPEE BUTTES
5087' MD 5032' TVD

5080' MD-5110' MD: SLTST: 60% LTGY
- MEDLTGY, FRI, FN TO MED GRN,
W SRTD, CALC CMT, SANDY, FREE
SLTYSH, IMBD PYR, INTGR POR,
NO STN, NO FLOR, SLOW LZ CUT,
FNT BN RNG

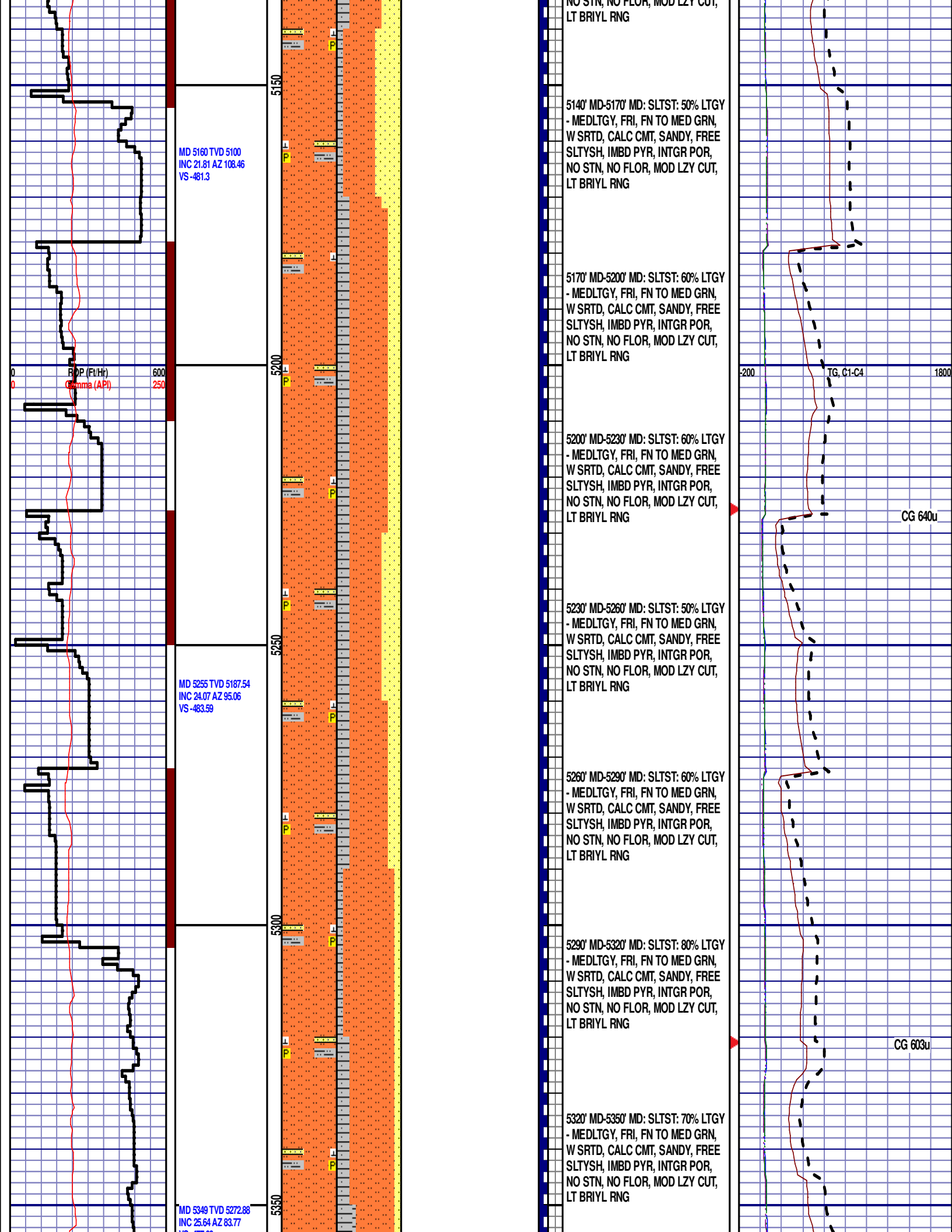
5110' MD-5140' MD: SLTST: 50% LTGY
- MEDLTGY, FRI, FN TO MED GRN,
W SRTD, CALC CMT, SANDY, FREE
SLTYSH, IMBD PYR, INTGR POR,
NO STN, NO FLOR, SLOW LZ CUT,
FNT BN RNG

CG 446u

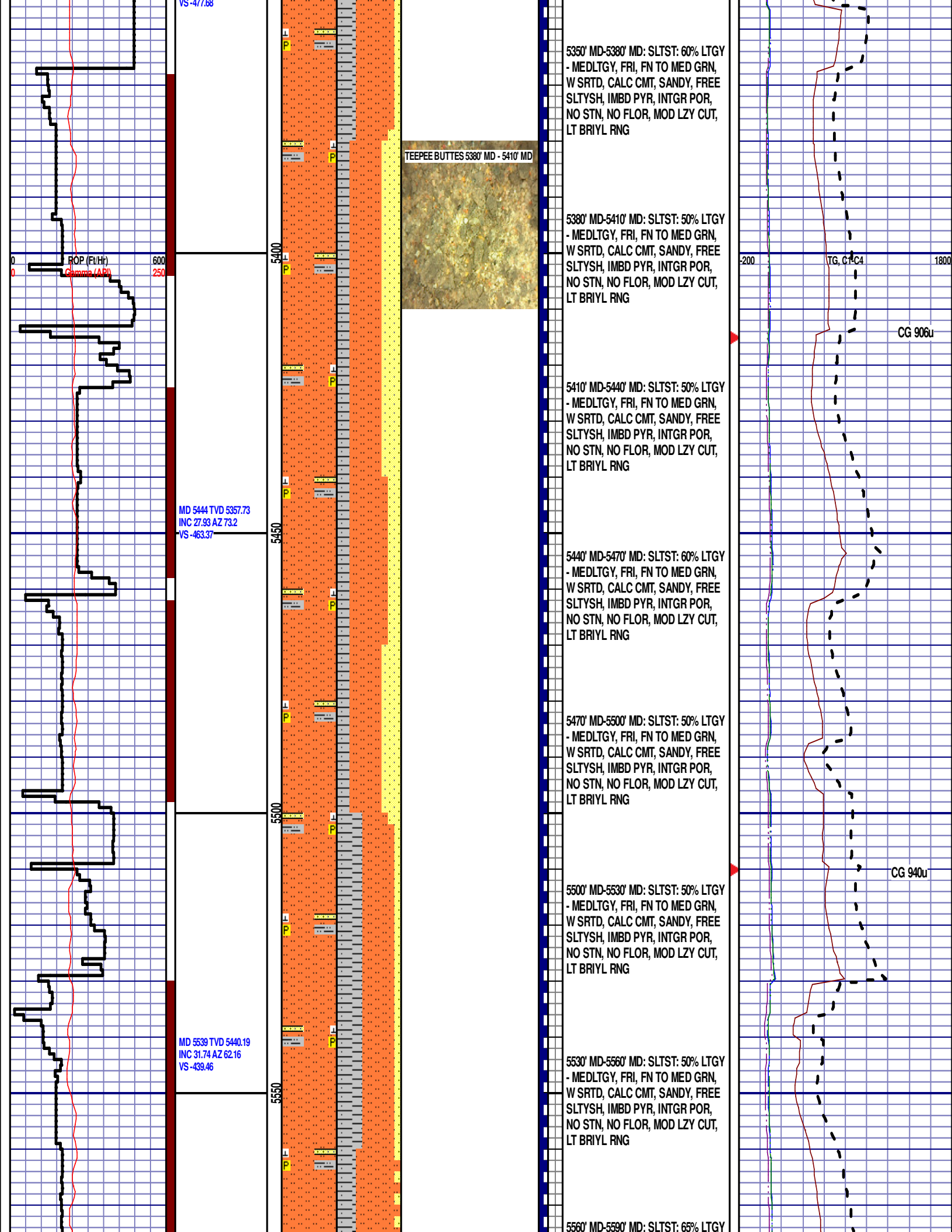
TG, C1-C4

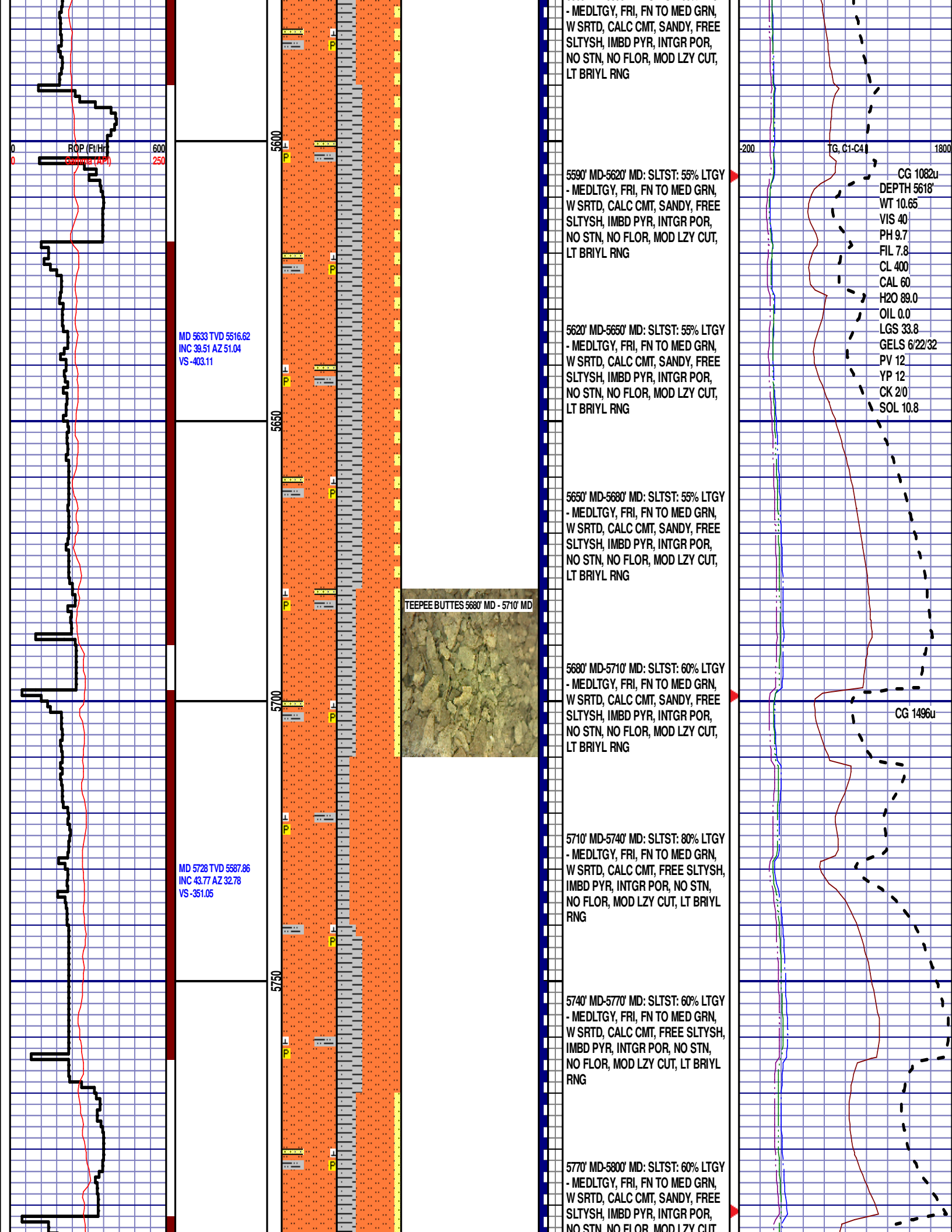
CG 580u

CG 1225u



VS-477.68





- MEDLTGY, FRI, FN TO MED GRN,
W SRTD, CALC CMT, SANDY, FREE
SLTYSH, IMBD PYR, INTGR POR,
NO STN, NO FLOR, MOD LZY CUT,
LT BRIYL RNG

5590' MD-5620' MD: SLTST: 55% LTGY
- MEDLTGY, FRI, FN TO MED GRN,
W SRTD, CALC CMT, SANDY, FREE
SLTYSH, IMBD PYR, INTGR POR,
NO STN, NO FLOR, MOD LZY CUT,
LT BRIYL RNG

5620' MD-5650' MD: SLTST: 55% LTGY
- MEDLTGY, FRI, FN TO MED GRN,
W SRTD, CALC CMT, SANDY, FREE
SLTYSH, IMBD PYR, INTGR POR,
NO STN, NO FLOR, MOD LZY CUT,
LT BRIYL RNG

5650' MD-5680' MD: SLTST: 55% LTGY
- MEDLTGY, FRI, FN TO MED GRN,
W SRTD, CALC CMT, SANDY, FREE
SLTYSH, IMBD PYR, INTGR POR,
NO STN, NO FLOR, MOD LZY CUT,
LT BRIYL RNG

TEEPEE BUTTES 5680' MD - 5710' MD

5680' MD-5710' MD: SLTST: 60% LTGY
- MEDLTGY, FRI, FN TO MED GRN,
W SRTD, CALC CMT, SANDY, FREE
SLTYSH, IMBD PYR, INTGR POR,
NO STN, NO FLOR, MOD LZY CUT,
LT BRIYL RNG

5710' MD-5740' MD: SLTST: 80% LTGY
- MEDLTGY, FRI, FN TO MED GRN,
W SRTD, CALC CMT, FREE SLTYSH,
IMBD PYR, INTGR POR, NO STN,
NO FLOR, MOD LZY CUT, LT BRIYL
RNG

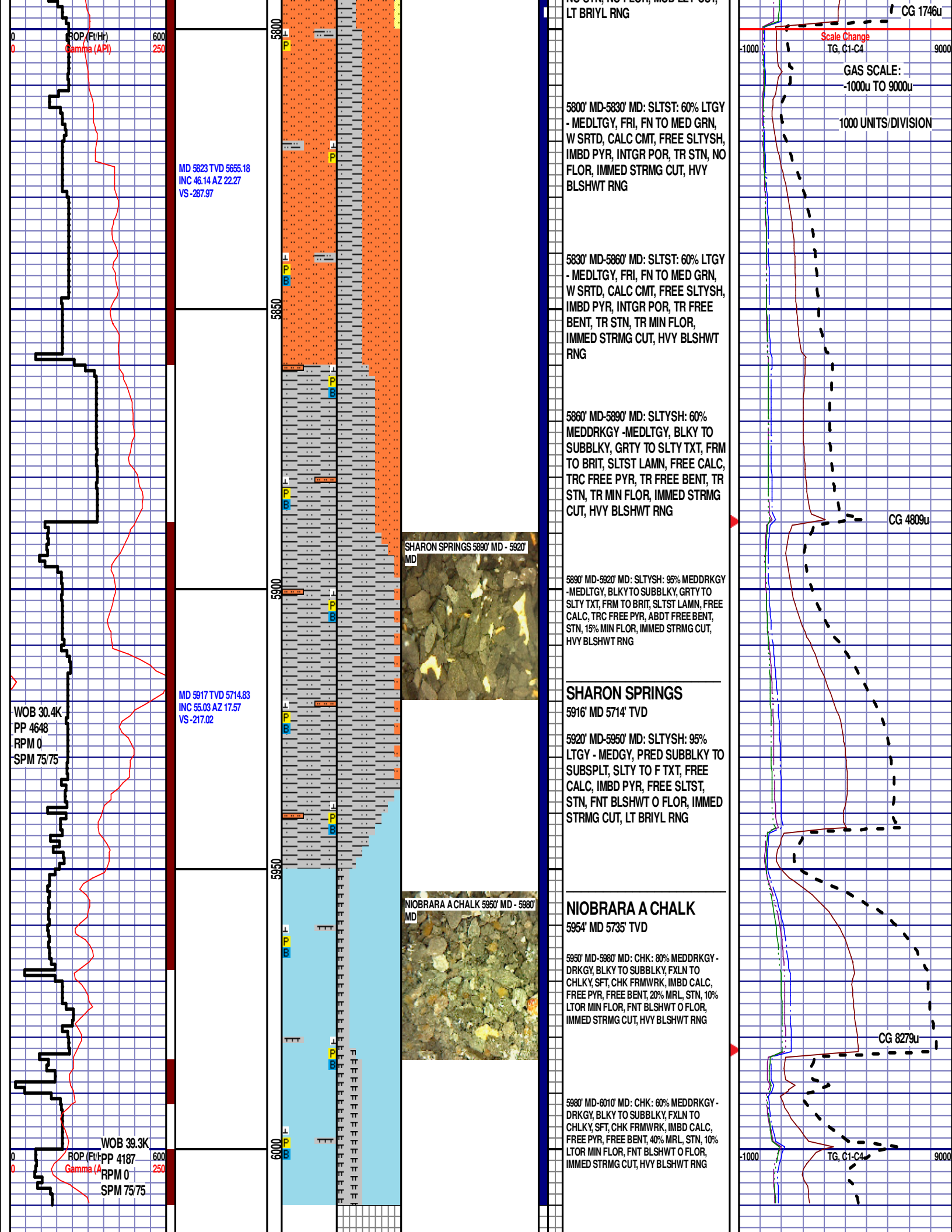
5740' MD-5770' MD: SLTST: 60% LTGY
- MEDLTGY, FRI, FN TO MED GRN,
W SRTD, CALC CMT, FREE SLTYSH,
IMBD PYR, INTGR POR, NO STN,
NO FLOR, MOD LZY CUT, LT BRIYL
RNG

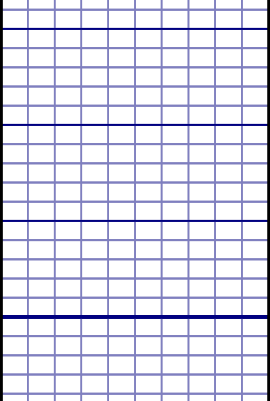
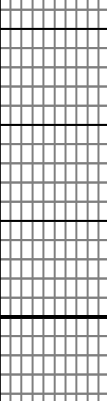

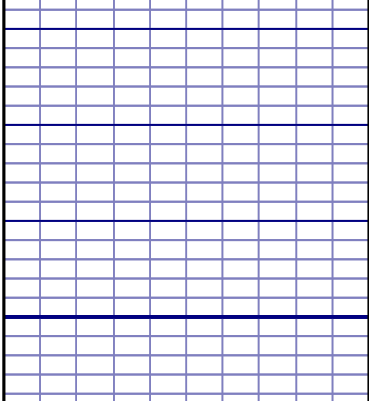
5770' MD-5800' MD: SLTST: 60% LTGY
- MEDLTGY, FRI, FN TO MED GRN,
W SRTD, CALC CMT, SANDY, FREE
SLTYSH, IMBD PYR, INTGR POR,
NO STN, NO FLOR, MOD LZY CUT

MD 5633 TVD 5516.62
INC 39.51 AZ 51.04
VS -403.11

MD 5728 TVD 5587.86
INC 43.77 AZ 32.78
VS -351.05

CG 1496u



						<p>END OF VERTICAL LOG @ 6010' MD ON 7/31/15, CONTINUED ON HORIZONTAL LOG</p>	
		6050					