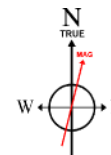


EXTRACTION OIL & GAS

Location: COLORADO Slot: SLOT#01 SILVERBACK 1 (300'FNL & 1307'FWL, SEC.36)
Field: WELD COUNTY (NAD83/TRUE NORTH) Well: SILVERBACK 1
Facility: SEC.36-T12N-R62W Wellbore: SILVERBACK 1 PWB

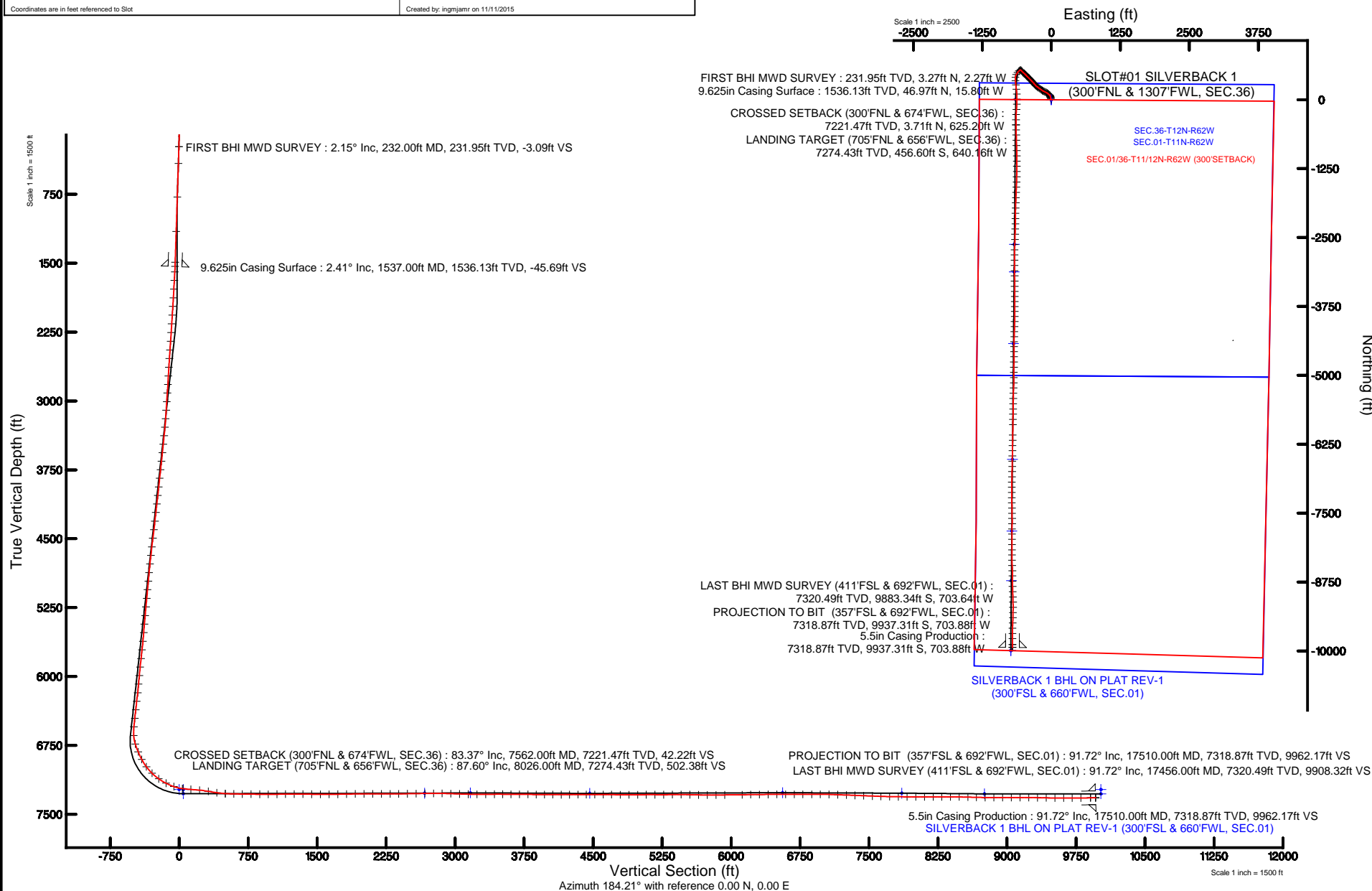
Plot reference wellpath is SILVERBACK 1 PWB (REV-B.0)

True vertical depths are referenced to SAVANNA 802 (20'KB) (RKB)	Grid System: NAD83 / Lambert Colorado SP, Northern Zone (501), US feet
Measured depths are referenced to SAVANNA 802 (20'KB) (RKB)	North Reference: True north
SAVANNA 802 (20'KB) (RKB) to Mean Sea Level: 5303 feet	Scale: True distance
Mean Sea Level to Mud line (At Slot: SLOT#01 SILVERBACK 1 (300'FNL & 1307'FWL, SEC.36)): 0 feet	Depths are in feet
Coordinates are in feet referenced to Slot	Created by: ingnmjr on 11/11/2015



BGGM (1945.0 to 2017.0) Dip: 67.50° Field: 52925.7 nT
Magnetic North is 8.27 degrees East of True North (at 10/30/2015)

To correct azimuth from Magnetic to True add 8.27 degrees





Actual Wellpath Report

SILVERBACK 1 AWP

Page 1 of 8



REFERENCE WELLPATH IDENTIFICATION

Operator	EXTRACTION OIL & GAS	Slot	SLOT#01 SILVERBACK 1 (300'FNL & 1307'FWL, SEC.36)
Area	COLORADO	Well	SILVERBACK 1
Field	WELD COUNTY (NAD83/TRUE NORTH)	Wellbore	SILVERBACK 1 AWB
Facility	SEC.36-T12N-R62W		

REPORT SETUP INFORMATION

Projection System	NAD83 / Lambert Colorado SP, Northern Zone (501), US feet	Software System	WellArchitect® 4.1.1
North Reference	True	User	Ingmjmr
Scale	1.00004	Report Generated	11/11/2015 at 8:08:31 AM
Convergence at slot	0.79° East	Database/Source file	WA_DEN_Denver_Defn/SILVERBACK_1_AWB.xml

WELLPATH LOCATION

	Local coordinates		Grid coordinates		Geographic coordinates	
	North[ft]	East[ft]	Easting[US ft]	Northing[US ft]	Latitude	Longitude
Slot Location	0.00	0.00	3338951.32	1599502.43	40°58'21.194"N	104°16'21.284"W
Facility Reference Pt			3338951.32	1599502.43	40°58'21.194"N	104°16'21.284"W
Field Reference Pt			3185481.27	1419166.81	40°28'55.560"N	104°49'59.556"W

WELLPATH DATUM

Calculation method	Minimum curvature	SAVANNA 802 (20'KB) (RKB) to Facility Vertical Datum	5303.00ft
Horizontal Reference Pt	Slot	SAVANNA 802 (20'KB) (RKB) to Mean Sea Level	5303.00ft
Vertical Reference Pt	SAVANNA 802 (20'KB) (RKB)	SAVANNA 802 (20'KB) (RKB) to Mud Line at Slot (SLOT#01 SILVERBACK 1 (300'FNL & 1307'FWL, SEC.36))	5303.00ft
MD Reference Pt	SAVANNA 802 (20'KB) (RKB)	Section Origin	N 0.00, E 0.00 ft
Field Vertical Reference	Mean Sea Level	Section Azimuth	184.21°



Actual Wellpath Report

SILVERBACK 1 AWP

Page 2 of 8



REFERENCE WELLPATH IDENTIFICATION

Operator	EXTRACTION OIL & GAS	Slot	SLOT#01 SILVERBACK 1 (300'FNL & 1307'FWL, SEC.36)
Area	COLORADO	Well	SILVERBACK 1
Field	WELD COUNTY (NAD83/TRUE NORTH)	Wellbore	SILVERBACK 1 AWP
Facility	SEC.36-T12N-R62W		

WELLPATH DATA (177 stations) † = interpolated/extrapolated station

MD [ft]	Inclination [°]	Azimuth [°]	TVD [ft]	Vert Sect [ft]	North [ft]	East [ft]	DLS [°/100ft]	Comments
0.00†	0.000	325.210	0.00	0.00	0.00	0.00	0.00	
20.00	0.000	325.210	20.00	0.00	0.00	0.00	0.00	
232.00	2.150	325.210	231.95	-3.09	3.27	-2.27	1.01	FIRST BHI MWD SURVEY
416.00	2.310	330.740	415.81	-8.87	9.34	-6.05	0.15	
781.00	1.930	345.650	780.56	-20.83	21.71	-11.17	0.18	
1156.00	1.950	350.890	1155.35	-33.02	34.13	-13.74	0.05	
1492.00	1.910	351.190	1491.16	-44.04	45.30	-15.51	0.01	
1595.00	3.050	347.660	1594.06	-48.34	49.68	-16.36	1.12	
1689.00	3.120	345.820	1687.92	-53.17	54.60	-17.52	0.13	
1783.00	3.120	347.830	1781.78	-58.05	59.58	-18.68	0.12	
1878.00	3.270	350.370	1876.64	-63.16	64.78	-19.68	0.22	
1973.00	4.420	333.380	1971.42	-68.93	70.72	-21.78	1.69	
2068.00	4.550	330.630	2066.13	-75.22	77.28	-25.26	0.26	
2163.00	6.350	310.240	2160.71	-81.45	83.96	-31.12	2.76	
2258.00	6.400	309.030	2255.12	-87.56	90.69	-39.25	0.15	
2353.00	6.500	310.480	2349.52	-93.76	97.51	-47.45	0.20	
2449.00	6.230	312.490	2444.93	-100.20	104.56	-55.42	0.36	
2543.00	5.850	314.930	2538.41	-106.49	111.39	-62.58	0.49	
2638.00	7.140	301.660	2632.80	-112.37	117.90	-71.03	2.07	
2733.00	6.860	301.030	2727.09	-117.65	123.93	-80.92	0.31	
2827.00	9.730	296.040	2820.10	-123.14	130.31	-92.87	3.14	
2922.00	10.020	296.250	2913.69	-129.22	137.49	-107.49	0.31	
3017.00	9.760	296.000	3007.28	-135.31	144.67	-122.14	0.28	
3112.00	9.760	296.310	3100.91	-141.33	151.77	-136.60	0.06	
3206.00	9.590	296.840	3193.57	-147.34	158.84	-150.73	0.20	
3299.00	10.630	306.350	3285.13	-154.89	167.42	-164.55	2.11	
3394.00	10.690	305.810	3378.49	-164.16	177.77	-178.75	0.12	
3488.00	11.020	305.550	3470.81	-173.40	188.10	-193.13	0.35	
3583.00	11.390	305.170	3564.00	-182.95	198.78	-208.19	0.40	
3678.00	11.580	305.030	3657.10	-192.66	209.66	-223.66	0.20	
3772.00	11.860	306.200	3749.14	-202.61	220.78	-239.18	0.39	
3867.00	11.620	306.500	3842.15	-212.89	232.23	-254.75	0.26	
3962.00	10.510	306.730	3935.38	-222.66	243.11	-269.39	1.17	
4056.00	9.840	317.170	4027.91	-232.75	254.12	-281.72	2.08	
4151.00	9.010	319.340	4121.63	-243.55	265.72	-292.08	0.95	
4245.00	8.870	317.700	4214.48	-253.75	276.66	-301.76	0.31	
4340.00	9.210	319.440	4308.30	-264.19	287.86	-311.63	0.46	
4435.00	9.500	320.650	4402.04	-275.27	299.70	-321.55	0.37	
4529.00	9.570	319.590	4494.74	-286.45	311.64	-331.53	0.20	
4624.00	9.350	318.280	4588.45	-297.44	323.42	-341.78	0.32	
4718.00	9.170	316.350	4681.23	-307.78	334.54	-352.04	0.38	
4812.00	8.870	316.350	4774.06	-317.66	345.20	-362.21	0.32	
4907.00	8.100	315.980	4868.02	-327.04	355.31	-371.91	0.81	
5001.00	7.950	315.500	4961.10	-335.74	364.71	-381.07	0.17	
5096.00	8.020	317.310	5055.18	-344.60	374.27	-390.17	0.27	



Actual Wellpath Report

SILVERBACK 1 AWP

Page 3 of 8



REFERENCE WELLPATH IDENTIFICATION

Operator	EXTRACTION OIL & GAS	Slot	SLOT#01 SILVERBACK 1 (300'FNL & 1307'FWL, SEC.36)
Area	COLORADO	Well	SILVERBACK 1
Field	WELD COUNTY (NAD83/TRUE NORTH)	Wellbore	SILVERBACK 1 AWP
Facility	SEC.36-T12N-R62W		

WELLPATH DATA (177 stations) † = interpolated/extrapolated station

MD [ft]	Inclination [°]	Azimuth [°]	TVD [ft]	Vert Sect [ft]	North [ft]	East [ft]	DLS [°/100ft]	Comments
5190.00	7.670	316.290	5148.30	-353.28	383.62	-398.95	0.40	
5285.00	7.170	316.740	5242.51	-361.54	392.52	-407.40	0.53	
5379.00	9.170	313.830	5335.55	-370.28	401.98	-416.82	2.17	
5474.00	7.820	310.490	5429.50	-378.93	411.42	-427.20	1.51	
5568.00	6.310	309.930	5522.79	-385.73	418.89	-436.02	1.61	
5663.00	9.370	318.360	5616.89	-394.17	428.02	-445.17	3.43	
5757.00	8.280	320.340	5709.78	-404.38	438.95	-454.57	1.20	
5852.00	9.620	317.150	5803.62	-414.72	450.04	-464.34	1.50	
5946.00	8.280	313.790	5896.47	-424.38	460.48	-474.56	1.53	
6041.00	9.670	311.590	5990.31	-433.59	470.51	-485.47	1.51	
6135.00	7.980	310.450	6083.19	-442.24	479.99	-496.34	1.81	
6229.00	10.050	310.680	6176.03	-450.97	489.57	-507.53	2.20	
6323.00	10.990	314.660	6268.45	-461.66	501.21	-520.12	1.26	
6418.00	8.790	314.680	6362.03	-472.24	512.68	-531.72	2.32	
6513.00	10.470	317.270	6455.69	-482.85	524.13	-542.74	1.83	
6607.00	8.110	317.740	6548.45	-493.25	535.31	-553.00	2.51	
6702.00	9.720	249.160	6642.53	-494.47	537.42	-565.03	10.64	
6797.00	22.840	226.260	6733.61	-477.29	521.74	-585.96	15.12	
6892.00	26.250	217.860	6820.03	-446.09	492.39	-612.19	5.13	
6986.00	30.370	208.340	6902.82	-407.07	455.03	-636.25	6.49	
7081.00	36.860	186.710	6982.17	-356.45	405.36	-651.05	14.25	
7175.00	45.340	175.140	7053.05	-295.07	343.85	-651.51	12.09	
7270.00	55.490	173.440	7113.51	-223.06	271.10	-644.16	10.77	
7364.00	63.690	172.580	7161.05	-143.61	190.71	-634.27	8.76	
7459.00	69.910	177.090	7198.47	-57.52	103.81	-626.50	7.87	
7553.00	83.050	180.970	7220.41	33.29	12.65	-625.04	14.54	
7562.00†	83.375	181.060	7221.47	42.22	3.71	-625.20	3.75	CROSSED SETBACK (300'FNL & 674'FWL, SEC.36)
7648.00	86.480	181.920	7229.07	127.77	-81.91	-627.43	3.75	
7743.00	84.100	184.010	7236.87	222.42	-176.45	-632.32	3.33	
7837.00	80.490	182.330	7249.47	315.53	-269.44	-637.48	4.23	
7932.00	80.790	180.840	7264.93	409.17	-363.14	-640.07	1.58	
8026.00	87.600	179.280	7274.43	502.38	-456.60	-640.16	7.43	LANDING TARGET (705'FNL & 656'FWL, SEC.36)
8117.00	88.670	179.070	7277.39	592.98	-547.54	-638.85	1.20	
8211.00	88.760	178.290	7279.50	686.52	-641.49	-636.69	0.84	
8305.00	89.560	179.110	7280.88	780.07	-735.45	-634.55	1.22	
8400.00	89.630	178.110	7281.55	874.61	-830.42	-632.25	1.06	
8494.00	89.960	177.090	7281.88	967.99	-924.34	-628.31	1.14	
8589.00	90.460	180.530	7281.54	1062.55	-1019.30	-626.34	3.66	
8683.00	90.760	180.010	7280.54	1156.32	-1113.29	-626.78	0.64	
8778.00	89.470	180.540	7280.34	1251.10	-1208.29	-627.24	1.47	
8873.00	90.030	179.700	7280.76	1345.85	-1303.29	-627.44	1.06	
8967.00	89.290	181.590	7281.32	1439.66	-1397.28	-628.50	2.16	
9062.00	89.690	181.990	7282.16	1534.57	-1492.23	-631.46	0.60	
9157.00	90.240	181.890	7282.22	1629.50	-1587.17	-634.68	0.59	
9251.00	90.700	182.240	7281.45	1723.43	-1681.11	-638.07	0.61	



Actual Wellpath Report

SILVERBACK 1 AWP

Page 4 of 8



REFERENCE WELLPATH IDENTIFICATION

Operator	EXTRACTION OIL & GAS	Slot	SLOT#01 SILVERBACK 1 (300'FNL & 1307'FWL, SEC.36)
Area	COLORADO	Well	SILVERBACK 1
Field	WELD COUNTY (NAD83/TRUE NORTH)	Wellbore	SILVERBACK 1 AWP
Facility	SEC.36-T12N-R62W		

WELLPATH DATA (177 stations)

MD [ft]	Inclination [°]	Azimuth [°]	TVD [ft]	Vert Sect [ft]	North [ft]	East [ft]	DLS [°/100ft]	Comments
9347.00	91.040	182.220	7279.99	1819.36	-1777.02	-641.80	0.35	
9441.00	91.540	182.030	7277.88	1913.27	-1870.93	-645.29	0.57	
9537.00	89.380	181.290	7277.10	2009.17	-1966.88	-648.07	2.38	
9631.00	90.000	180.940	7277.61	2103.03	-2060.86	-649.90	0.76	
9726.00	90.670	180.160	7277.06	2197.83	-2155.86	-650.81	1.08	
9821.00	89.560	181.210	7276.87	2292.65	-2250.85	-651.94	1.61	
9915.00	90.180	181.950	7277.08	2386.55	-2344.81	-654.54	1.03	
10010.00	90.920	181.570	7276.17	2481.46	-2439.76	-657.45	0.88	
10105.00	91.200	180.780	7274.41	2576.31	-2534.72	-659.40	0.88	
10200.00	90.300	183.190	7273.17	2671.22	-2629.65	-662.69	2.71	
10294.00	89.660	181.130	7273.20	2765.15	-2723.58	-666.23	2.29	
10388.00	90.090	181.120	7273.41	2859.02	-2817.56	-668.08	0.46	
10483.00	87.870	179.720	7275.10	2953.78	-2912.53	-668.78	2.76	
10578.00	87.990	179.400	7278.53	3048.41	-3007.47	-668.05	0.36	
10672.00	88.760	179.270	7281.19	3142.03	-3101.42	-666.96	0.83	
10767.00	89.660	179.440	7282.50	3236.68	-3196.41	-665.89	0.96	
10862.00	90.180	179.760	7282.64	3331.37	-3291.40	-665.22	0.64	
10957.00	91.070	180.080	7281.60	3426.10	-3386.40	-665.09	1.00	
11048.00	89.190	179.460	7281.39	3516.82	-3477.39	-664.73	2.18	
11139.00	89.690	179.540	7282.28	3607.51	-3568.38	-663.93	0.56	
11232.00	90.460	179.300	7282.16	3700.18	-3661.38	-662.99	0.87	
11323.00	88.730	180.260	7282.80	3790.90	-3752.37	-662.64	2.17	
11413.00	89.500	180.370	7284.19	3880.68	-3842.36	-663.14	0.86	
11504.00	90.270	180.270	7284.38	3971.47	-3933.36	-663.64	0.85	
11594.00	89.070	181.450	7284.90	4061.32	-4023.34	-664.99	1.87	
11686.00	89.560	181.770	7286.00	4153.21	-4115.30	-667.58	0.64	
11777.00	90.400	181.910	7286.03	4244.13	-4206.25	-670.50	0.94	
11869.00	91.230	181.490	7284.72	4336.04	-4298.20	-673.23	1.01	
11960.00	89.260	180.850	7284.33	4426.90	-4389.17	-675.09	2.28	
12051.00	89.660	180.580	7285.19	4517.73	-4480.16	-676.22	0.53	
12143.00	90.430	180.410	7285.11	4609.53	-4572.16	-677.02	0.86	
12235.00	88.760	180.110	7285.76	4701.31	-4664.15	-677.44	1.84	
12328.00	89.290	180.310	7287.35	4794.07	-4757.14	-677.78	0.61	
12423.00	90.150	180.570	7287.81	4888.86	-4852.13	-678.51	0.95	
12518.00	90.460	180.560	7287.31	4983.67	-4947.13	-679.44	0.33	
12613.00	90.800	179.840	7286.26	5078.43	-5042.12	-679.77	0.84	
12708.00	89.320	181.690	7286.16	5173.25	-5137.10	-681.04	2.49	
12802.00	90.180	182.430	7286.57	5267.18	-5231.04	-684.42	1.21	
12897.00	90.950	181.750	7285.64	5362.11	-5325.97	-687.89	1.08	
12991.00	89.870	180.840	7284.96	5455.98	-5419.94	-690.01	1.50	
13087.00	88.360	180.700	7286.45	5551.80	-5515.92	-691.30	1.58	
13182.00	88.890	181.080	7288.72	5646.61	-5610.88	-692.78	0.69	
13277.00	89.590	180.700	7289.98	5741.44	-5705.86	-694.25	0.84	
13371.00	90.270	180.790	7290.10	5835.27	-5799.85	-695.47	0.73	
13467.00	91.170	180.930	7288.89	5931.09	-5895.83	-696.91	0.95	



Actual Wellpath Report

SILVERBACK 1 AWP

Page 5 of 8



REFERENCE WELLPATH IDENTIFICATION

Operator	EXTRACTION OIL & GAS	Slot	SLOT#01 SILVERBACK 1 (300'FNL & 1307'FWL, SEC.36)
Area	COLORADO	Well	SILVERBACK 1
Field	WELD COUNTY (NAD83/TRUE NORTH)	Wellbore	SILVERBACK 1 AWB
Facility	SEC.36-T12N-R62W		

WELLPATH DATA (177 stations)

MD [ft]	Inclination [°]	Azimuth [°]	TVD [ft]	Vert Sect [ft]	North [ft]	East [ft]	DLS [°/100ft]	Comments
13656.00	90.180	180.910	7286.67	6119.77	-6084.79	-699.95	0.52	
13750.00	90.980	181.700	7285.72	6213.64	-6178.76	-702.09	1.20	
13845.00	90.430	180.840	7284.55	6308.51	-6273.73	-704.19	1.07	
13939.00	90.830	180.620	7283.51	6402.33	-6367.72	-705.39	0.49	
14035.00	89.780	181.120	7283.00	6498.16	-6463.70	-706.85	1.21	
14129.00	90.330	180.980	7282.91	6592.02	-6557.69	-708.57	0.60	
14224.00	90.950	180.900	7281.85	6686.85	-6652.67	-710.13	0.66	
14318.00	89.320	181.160	7281.63	6780.71	-6746.65	-711.82	1.76	
14414.00	90.180	181.390	7282.05	6876.58	-6842.62	-713.96	0.93	
14508.00	89.780	182.260	7282.08	6970.50	-6936.57	-716.95	1.02	
14602.00	88.550	180.050	7283.45	7064.34	-7030.54	-718.84	2.69	
14697.00	87.770	179.990	7286.50	7159.04	-7125.49	-718.88	0.82	
14792.00	88.020	179.040	7289.99	7253.66	-7220.42	-718.07	1.03	
14886.00	87.430	178.550	7293.72	7347.16	-7314.32	-716.10	0.82	
14980.00	87.840	179.330	7297.60	7440.68	-7408.23	-714.36	0.94	
15075.00	87.960	178.950	7301.08	7535.25	-7503.15	-712.94	0.42	
15170.00	87.990	179.170	7304.44	7629.81	-7598.08	-711.38	0.23	
15265.00	88.820	180.680	7307.08	7724.50	-7693.04	-711.25	1.81	
15360.00	89.500	180.700	7308.48	7819.31	-7788.02	-712.40	0.72	
15454.00	89.900	180.350	7308.97	7913.11	-7882.01	-713.26	0.57	
15549.00	90.090	179.770	7308.98	8007.86	-7977.01	-713.36	0.64	
15644.00	89.630	179.810	7309.21	8102.58	-8072.01	-713.01	0.49	
15739.00	89.440	180.140	7309.98	8197.32	-8167.01	-712.97	0.40	
15833.00	90.120	180.030	7310.34	8291.07	-8261.01	-713.11	0.73	
15928.00	90.700	180.070	7309.66	8385.82	-8356.01	-713.19	0.61	
16022.00	88.360	177.450	7310.43	8479.38	-8449.97	-711.16	3.74	
16118.00	88.450	177.530	7313.10	8574.68	-8545.84	-706.96	0.13	
16212.00	88.880	181.740	7315.30	8668.33	-8639.79	-706.36	4.50	
16307.00	89.190	178.300	7316.90	8763.05	-8734.76	-706.39	3.64	
16402.00	89.530	177.960	7317.96	8857.51	-8829.70	-703.29	0.51	
16497.00	90.090	178.280	7318.27	8951.97	-8924.65	-700.17	0.68	
16593.00	90.400	178.310	7317.86	9047.46	-9020.61	-697.32	0.32	
16688.00	90.490	179.100	7317.12	9142.02	-9115.58	-695.17	0.84	
16783.00	89.290	180.020	7317.31	9236.70	-9210.57	-694.44	1.59	
16878.00	88.920	181.120	7318.79	9331.50	-9305.56	-695.39	1.22	
16972.00	88.670	181.130	7320.77	9425.34	-9399.52	-697.23	0.27	
17067.00	89.220	182.840	7322.52	9520.25	-9494.44	-700.52	1.89	
17162.00	89.810	181.180	7323.32	9615.17	-9589.37	-703.85	1.85	
17256.00	90.180	179.940	7323.33	9708.98	-9683.37	-704.77	1.38	
17351.00	90.640	179.250	7322.65	9803.67	-9778.36	-704.10	0.87	
17456.00	91.720	180.250	7320.49	9908.32	-9883.34	-703.64	1.40	LAST BHI MWD SURVEY (411'FSL & 692'FWL, SEC.01)
17510.00	91.720	180.250	7318.87	9962.17	-9937.31	-703.88	0.00	PROJECTION TO BIT (357'FSL & 692'FWL, SEC.01)



Actual Wellpath Report

SILVERBACK 1 AWP

Page 6 of 8



REFERENCE WELLPATH IDENTIFICATION

Operator	EXTRACTION OIL & GAS	Slot	SLOT#01 SILVERBACK 1 (300'FNL & 1307'FWL, SEC.36)
Area	COLORADO	Well	SILVERBACK 1
Field	WELD COUNTY (NAD83/TRUE NORTH)	Wellbore	SILVERBACK 1 AWP
Facility	SEC.36-T12N-R62W		

HOLE & CASING SECTIONS - Ref Wellbore: SILVERBACK 1 AWP Ref Wellpath: SILVERBACK 1 AWP

String/Diameter	Start MD [ft]	End MD [ft]	Interval [ft]	Start TVD [ft]	End TVD [ft]	Start N/S [ft]	Start E/W [ft]	End N/S [ft]	End E/W [ft]
13.5in Open Hole	20.00	1537.00	1517.00	20.00	1536.13	0.00	0.00	46.97	-15.80
9.625in Casing Surface	20.00	1537.00	1517.00	20.00	1536.13	0.00	0.00	46.97	-15.80
8.75in Open Hole	1537.00	17510.00	15973.00	1536.13	7318.87	46.97	-15.80	-9937.31	-703.88
5.5in Casing Production	20.00	17510.00	17490.00	20.00	7318.87	0.00	0.00	-9937.31	-703.88

TARGETS

Name	TVD [ft]	North [ft]	East [ft]	Grid East [US ft]	Grid North [US ft]	Latitude	Longitude	Shape
SEC.01-T11N-R62W	0.00	0.00	0.00	3338951.32	1599502.43	40°58'21.194"N	104°16'21.284"W	polygon
SEC.36-T12N-R62W	0.00	0.00	0.00	3338951.32	1599502.43	40°58'21.194"N	104°16'21.284"W	polygon
SEC.01/36-T11/12N-R62W (300'SETBACK)	7230.00	0.00	0.00	3338951.32	1599502.43	40°58'21.194"N	104°16'21.284"W	polygon
SILVERBACK 1 BHL ON PLAT (300'FSL & 660'FWL, SEC.01)	7230.00	-9993.97	-735.99	3338353.71	1589498.89	40°56'42.446"N	104°16'30.875"W	point
SILVERBACK 1 LP ON PLAT (300'FNL & 660'FWL, SEC.36)	7230.00	3.69	-646.77	3338304.53	1599497.17	40°58'21.230"N	104°16'29.716"W	point
SILVERBACK 1 TARGET 4	7265.00	-6524.91	-705.05	3338336.63	1592968.16	40°57'16.723"N	104°16'30.473"W	point
SILVERBACK 1 TARGET 2	7267.00	-3125.04	-674.72	3338319.89	1596368.24	40°57'50.316"N	104°16'30.079"W	point
SILVERBACK 1 TARGET 1	7270.00	-2625.06	-670.26	3338317.43	1596868.25	40°57'55.257"N	104°16'30.021"W	point
SILVERBACK 1 TARGET 5	7270.00	-7824.85	-716.65	3338343.02	1591668.14	40°57'03.879"N	104°16'30.624"W	point
SILVERBACK 1 TARGET 3	7272.00	-4424.99	-686.30	3338326.31	1595068.21	40°57'37.472"N	104°16'30.229"W	point
SILVERBACK 1 LP ON PLAT REV-1 (300'FNL & 660'FWL, SEC.36)	7275.00	3.65	-646.80	3338304.50	1599497.13	40°58'21.230"N	104°16'29.716"W	point
SILVERBACK 1 BHL ON PLAT REV-1 (300'FSL & 660'FWL, SEC.01)	7277.00	-9994.01	-736.01	3338353.69	1589498.85	40°56'42.446"N	104°16'30.875"W	point
SILVERBACK 1 TARGET 6	7277.00	-8724.82	-724.68	3338347.45	1590768.12	40°56'54.987"N	104°16'30.728"W	point



Actual Wellpath Report

SILVERBACK 1 AWP

Page 7 of 8



REFERENCE WELLPATH IDENTIFICATION

Operator	EXTRACTION OIL & GAS	Slot	SLOT#01 SILVERBACK 1 (300'FNL & 1307'FWL, SEC.36)
Area	COLORADO	Well	SILVERBACK 1
Field	WELD COUNTY (NAD83/TRUE NORTH)	Wellbore	SILVERBACK 1 AWB
Facility	SEC.36-T12N-R62W		

WELLPATH COMPOSITION - Ref Wellbore: SILVERBACK 1 AWB Ref Wellpath: SILVERBACK 1 AWP

Start MD [ft]	End MD [ft]	Positional Uncertainty Model	Log Name/Comment	Wellbore
20.00	1492.00	Custom NaviTrak (MagCorr) (Rockies 0.03Gt model)	BHI MWD/NAVITRAK (MAGCORR) 13.5" HOLE <232-1492>	SILVERBACK 1 AWB
1492.00	8026.00	Custom NaviTrak (MagCorr) (Rockies 0.03Gt model)	BHI MWD/NAVITRAK (MAGCORR) 8.75" HOLE <1595-8026>	SILVERBACK 1 AWB
8026.00	17456.00	Custom OnTrak (MagCorr) (Rockies 0.03Gt model)	BHI MWD/ONTRAK (MAGCORR) 8.75" HOLE < 8117-17456>	SILVERBACK 1 AWB
17456.00	17510.00	Blind Drilling (std)	Projection to bit	SILVERBACK 1 AWB



Actual Wellpath Report

SILVERBACK 1 AWP

Page 8 of 8



REFERENCE WELLPATH IDENTIFICATION

Operator	EXTRACTION OIL & GAS	Slot	SLOT#01 SILVERBACK 1 (300'FNL & 1307'FWL, SEC.36)
Area	COLORADO	Well	SILVERBACK 1
Field	WELD COUNTY (NAD83/TRUE NORTH)	Wellbore	SILVERBACK 1 AWB
Facility	SEC.36-T12N-R62W		

WELLPATH COMMENTS

MD [ft]	Inclination [°]	Azimuth [°]	TVD [ft]	Comment
232.00	2.150	325.210	231.95	FIRST BHI MWD SURVEY
7562.00	83.375	181.060	7221.47	CROSSED SETBACK (300'FNL & 674'FWL, SEC.36)
8026.00	87.600	179.280	7274.43	LANDING TARGET (705'FNL & 656'FWL, SEC.36)
17456.00	91.720	180.250	7320.49	LAST BHI MWD SURVEY (411'FSL & 692'FWL, SEC.01)
17510.00	91.720	180.250	7318.87	PROJECTION TO BIT (357'FSL & 692'FWL, SEC.01)