



December 7, 2015

VIA ELECTRONIC TRANSMITTAL

Director Matt Lepore
Colorado Oil and Gas Conservation Commission
1120 Lincoln Street Suite 801
Denver, Colorado 80203

RE: Rule 318.A.e.
CS-Sherwood 3-1-13
CS-Sherwood C5-1-13

Surface Location: SWSE, Section 36, Township 6 North, Range 66 West, Weld County, CO

Dear Mr. Lepore,

Extraction Oil and Gas is planning to drill the captioned horizontal wells in accordance with the provision of COGCC Rule 318A.e.

The proposed wellbore spacing unit consists of:

Sec.1-5N-66W: W/2E/2 & E/2W/2
Sec.12-5N-66W: W/2E/2 & E/2W/2
Sec.13-5N-66W: W/2NE/4 & E/2NW/4

The spacing unit is an 800-acre wellbore spacing unit for the Niobrara and Codell formations.

Extraction Oil and Gas hereby certifies to the Director that all Owners within the proposed spacing unit above were notified and 30 days have passed without objection.

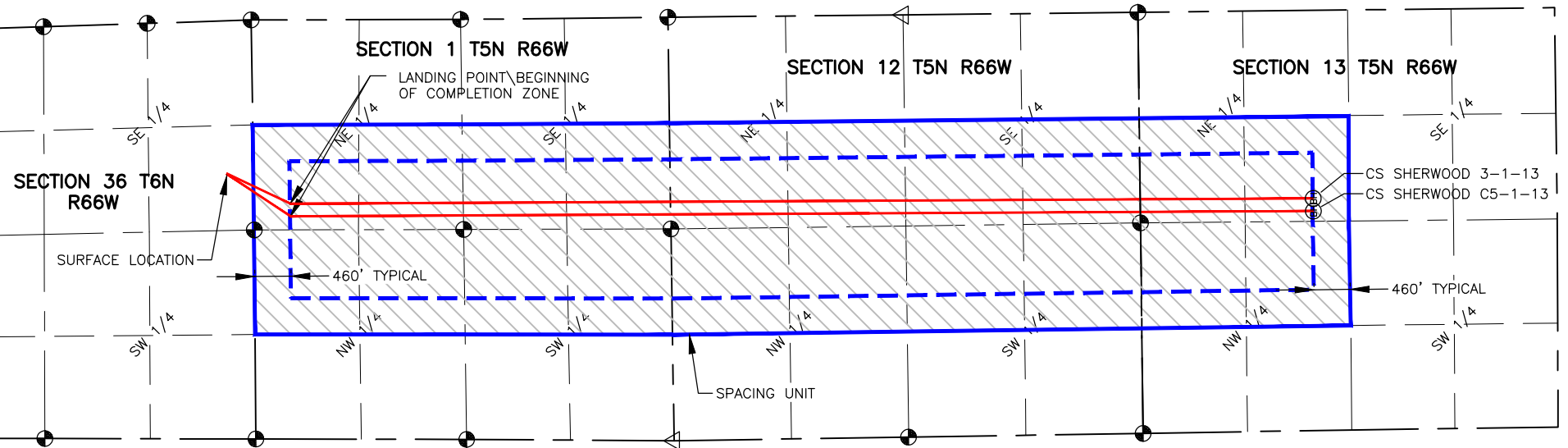
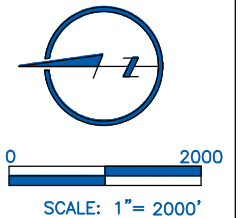
If you have any questions or issues regarding this permit, please contact Alyssa Andrews at 720-420-5749.

Respectfully,

Alyssa Andrews
Agent for Extraction Oil and Gas

NAME: SHERWOOD (EAST)
 SPACING UNIT: E/2 W/2 & W/2 E/2 SEC 1, E/2 W/2 & W/2 E/2 SEC 12, E/2 NW/4 & W/2 NE/4 SEC 13, T5N, R66W
 UNIT ACREAGE: 800

WELL NAME	SURFACE LOCATION				LANDING POINT\BEGIN HORIZONTAL COMPLETION ZONE				BOTTOM HOLE\END HORIZONTAL COMPLETION ZONE				COMPLETION ZONE BEARING	COMPLETION ZONE LENGTH
	DIST.	DIR.	DIST.	DIR.	DIST.	DIR.	DIST.	DIR.	DIST.	DIR.	DIST.	DIR.		
CS-SHERWOOD 3-1-13	339'	FSL	1936'	FEL	460'	FNL	2332'	FEL	2198'	FNL	2387'	FEL	S00°17'20"E	12995.10'
CS-SHERWOOD C5-1-13	339'	FSL	1944'	FEL	460'	FNL	2492'	FEL	2198'	FNL	2547'	FEL	S00°17'20"E	12994.33'



LAMP RYNEARSON
 & ASSOCIATES

4715 Innovation Drive 970.226.0342 | P
 Fort Collins, CO 80525 970.226.0879 | F
www.LRA-Inc.com

Planned Spacing Unit Exhibit
 C Street Directional Project
 Sherwood (East)

LEGEND

- ALIQUOT CORNER
- ⊙ BOTTOM HOLE
- COMPUTED FROM GLO RECORDS
- SECTION LINE
- QUARTER SECTION LINE
- SIXTEENTH LINE
- ◆ UNION COLONY CORNER
- △ COMPUTED ALIQUOT CORNER FROM MONUMENT ACCESSORIES

drawn by
KJW

date
10/15/15

cogcc id
430474

project - task number
0210012.00-502

book and page

surface - location

SW/4 SE/4 SEC 36 T6N R66W

path\filename P:_Engineering\0210012 MRI C Street\DRAWINGS\EXHIBITS\0210012PSUE-SHERWOOD.dwg