



December 7, 2015

VIA ELECTRONIC TRANSMITTAL

Director Matt Lepore  
Colorado Oil and Gas Conservation Commission  
1120 Lincoln Street Suite 801  
Denver, Colorado 80203

RE: Rule 318.A.e.  
CS-Sherwood 1-1-13  
CS-Sherwood 2-1-13

Surface Location: SWSE, Section 36, Township 6 North, Range 66 West, Weld County, CO

Dear Mr. Lepore,

Extraction Oil and Gas is planning to drill the captioned horizontal wells in accordance with the provision of COGCC Rule 318A.e.

The proposed wellbore spacing unit consists of:

Sec.1-5N-66W: W/2E/2 & E/2W/2  
Sec.12-5N-66W: W/2E/2 & E/2W/2  
Sec.13-5N-66W: NE/4NW/4 & NW/4NE/4

The spacing unit is an 720-acre wellbore spacing unit for the Niobrara and Codell formations.

Extraction Oil and Gas hereby certifies to the Director that all Owners within the proposed spacing unit above were notified and 30 days have passed without objection.

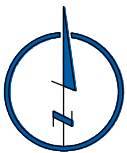
If you have any questions or issues regarding this permit, please contact Alyssa Andrews at 720-420-5749.

Respectfully,

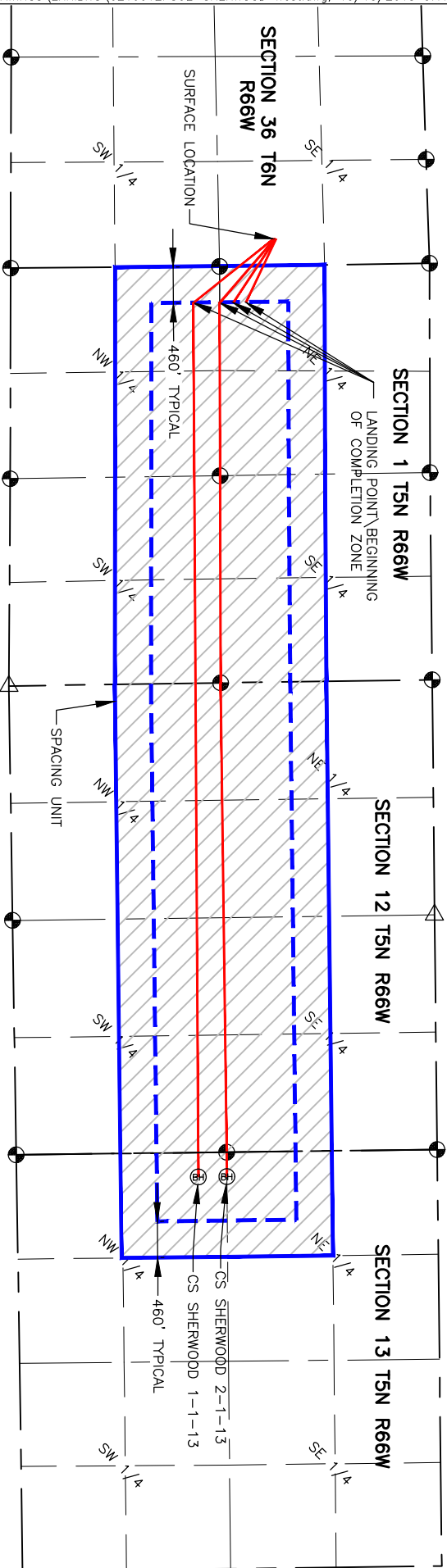
Alyssa Andrews  
Agent for Extraction Oil and Gas

NAME: SHERWOOD (WEST)  
SPACING UNIT: E/2 W/2 & W/2 E/2 SEC 1, E/2 W/2 & W/2 E/2 SEC 12, NE/4 NW/4 & NW/4 NE/4 SEC 13, T5N, R66W  
UNIT ACREAGE: 720

WELL NAME	SURFACE LOCATION				LANDING POINT\BEGIN HORIZONTAL COMPLETION ZONE				BOTTOM HOLE\END HORIZONTAL COMPLETION ZONE				COMPLETION ZONE BEARING	COMPLETION ZONE LENGTH
	DIST.	DIR.	DIST.	DIR.	DIST.	DIR.	DIST.	DIR.	DIST.	DIR.	DIST.	DIR.		
CS-SHERWOOD 2-1-13	340'	FSL	1952'	FEL	460'	FNL	2655'	FWL	310'	FNL	2671'	FWL	S00°07'57"E, S00°08'02"E, S00°44'31"E, S00°31'52"E	2198.48', 2632.95', 5964.76', 310.00'
CS-SHERWOOD 1-1-13	340'	FSL	1968'	FEL	460'	FNL	2319'	FWL	310'	FNL	2308'	FWL	S00°20'07"E	11107.78'



0 2000  
SCALE: 1" = 2000'



**LAMP RYNEARSON & ASSOCIATES**

4715 Innovation Drive  
Fort Collins, CO 80525  
www.LRA-Inc.com

Planned Spacing Unit Exhibit  
C Street Directional Project  
SHERWOOD (West)

**LEGEND**

- ALLOT CORNER
- BOTTOM HOLE
- COMPUTED FROM GLO RECORDS
- SECTION LINE
- QUARTER SECTION LINE
- SIXTEENTH LINE
- UNION COLONY CORNER
- COMPUTED ALLOT CORNER FROM MONUMENT ACCESSORIES

drawn by KJW  
date 10/15/15  
cogcc id 430474  
project - task number 0210012.00-502  
book and page  
surface - location SW/4 SE/4 SEC 36 T6N R66W