

LAND SURVEYOR'S CERTIFICATION

LAMP, RYNEARSON & ASSOCIATES, INC., OF FT. COLLINS, COLORADO HAS IN ACCORDANCE WITH A REQUEST FROM DUSTIN DYK AT EXTRACTION OIL & GAS, DETERMINED THE SURFACE LOCATION OF THE WELL DESIGNATED AS CS-SCOTT C2-1-13 TO BE 341' FROM THE SOUTH LINE AND 2040' FROM THE EAST LINE OF SECTION 36, TOWNSHIP 6 NORTH, RANGE 66 WEST OF THE 6TH P.M., WELD COUNTY, COLORADO.

FRANK A. KOHL
 COLORADO PLS 37067
 DATE OF SURVEY: 8/19/2010 (SECTION CONTROL)
 DATE OF SURVEY: 7/30/2014 (WELL LOCATION)



0 1000
 SCALE: 1"= 1000'
 U.S. SURVEY FEET

BASIS OF BEARING:

THE NORTH LINE OF THE NORTHEAST QUARTER OF SECTION 36-T6N-R66W BEARS S89°47'18"E BETWEEN THE NORTH QUARTER CORNER OF SECTION 36 MONUMENTED WITH 3 1/4" A.C. STAMPED "PLS 10855" AND THE NORTHEAST CORNER OF SECTION 36 MONUMENTED WITH A 2 1/2" A.C. STAMPED "LS 19585" BASED ON THE COLORADO NORTH 0501 STATE PLANE COORDINATE SYSTEM.

ELEVATIONS ARE BASED ON NAVD 88, AS OBSERVED FROM GPS OBSERVATIONS

LEGEND

- ⊕ ALIQUOT CORNER A.C. ALUMINUM CAP
- ⊙ BOTTOM HOLE R.B. RANGE BOX
- PROPOSED WELL



LAMP RYNEARSON
 & ASSOCIATES

4715 Innovation Drive 970.226.0342 | P
 Fort Collins, CO 80525 970.226.0879 | F
 www.LRA-Inc.com

Proposed Well Location Exhibit
 CS-Scott C2-1-13
 1 of 4

drawn by
 KJW

date
 10/15/15

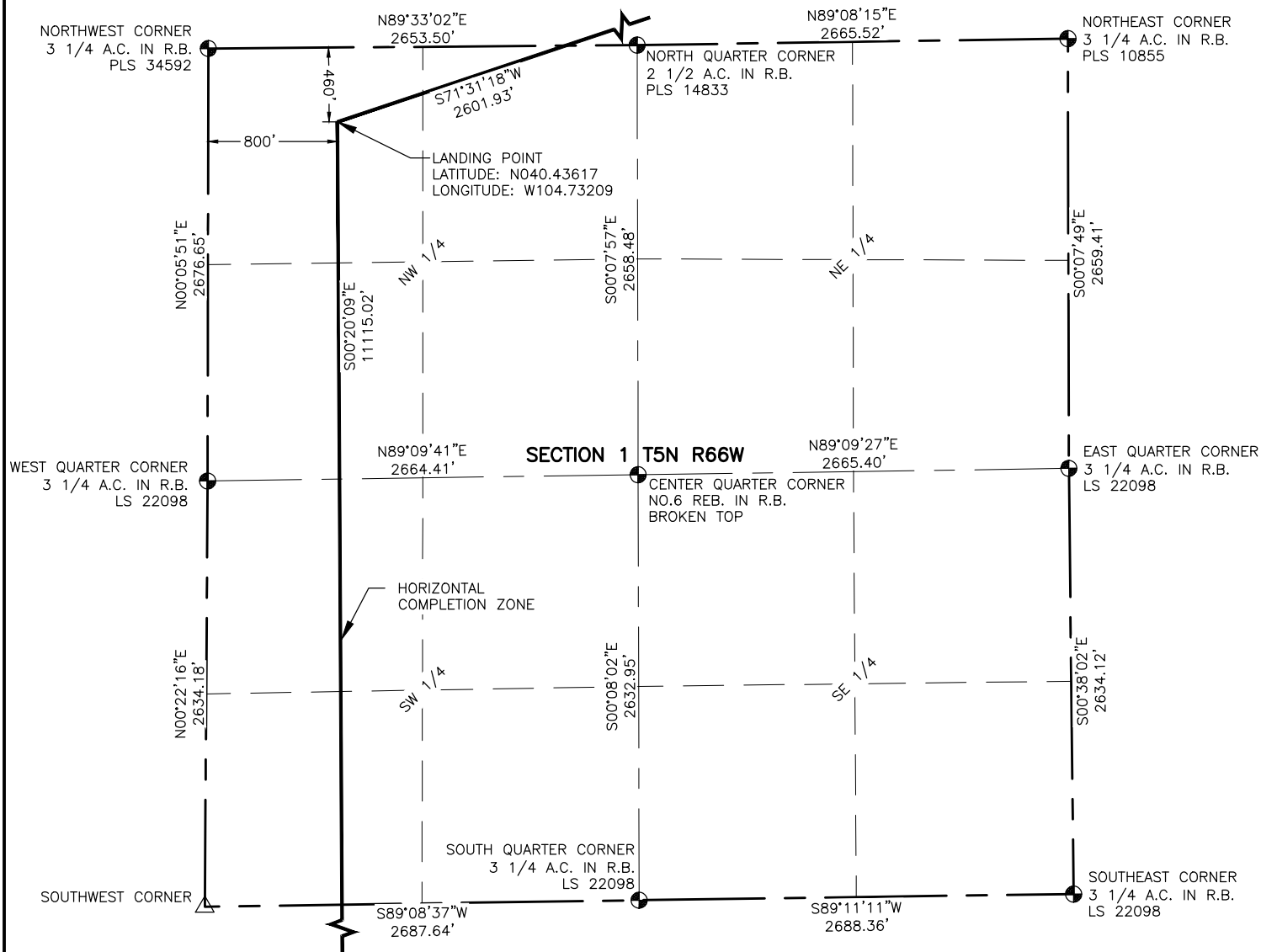
cogcc id
 430474

project - task number
 0210012.00-502

book and page
 MR-01 5-6

surface - location
 SW/4 SE/4 SEC 36 T6N R66W

path\filename P:_Engineering\0210012 MRI C Street\DRAWINGS\EXHIBITS\0210012EXWPE-C.dwg

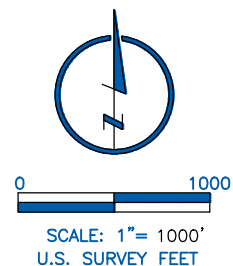


NOTES:

- DISTANCES ARE MEASURED PERPENDICULAR TO NEAREST SECTION LINE AND ARE SHOWN ON THE SAME SIDE OF THE SECTION LINE WHERE THE WELL IS LOCATED.
- THIS MAP DOES NOT REPRESENT A MONUMENTED BOUNDARY SURVEY. SIXTEENTH CORNER LOCATIONS ARE COMPUTED, UNLESS OTHERWISE NOTED.
- BOTTOM HOLE LOCATIONS AND HORIZONTAL COMPLETION ZONE PROVIDED BY OTHERS.

LEGEND

- ALIQUOT CORNER
- BOTTOM HOLE
- COMPUTED ALIQUOT CORNERS FROM MONUMENT ACCESSORIES
- PROPOSED WELL
- A.C. ALUMINUM CAP
- R.B. RANGE BOX



LAMP RYNEARSON
& ASSOCIATES

4715 Innovation Drive 970.226.0342 | P
 Fort Collins, CO 80525 970.226.0879 | F
www.LRA-Inc.com

Proposed Well Location Exhibit
 CS-Scott C2-1-13
 2 of 4

drawn by
KJW

date
10/15/15

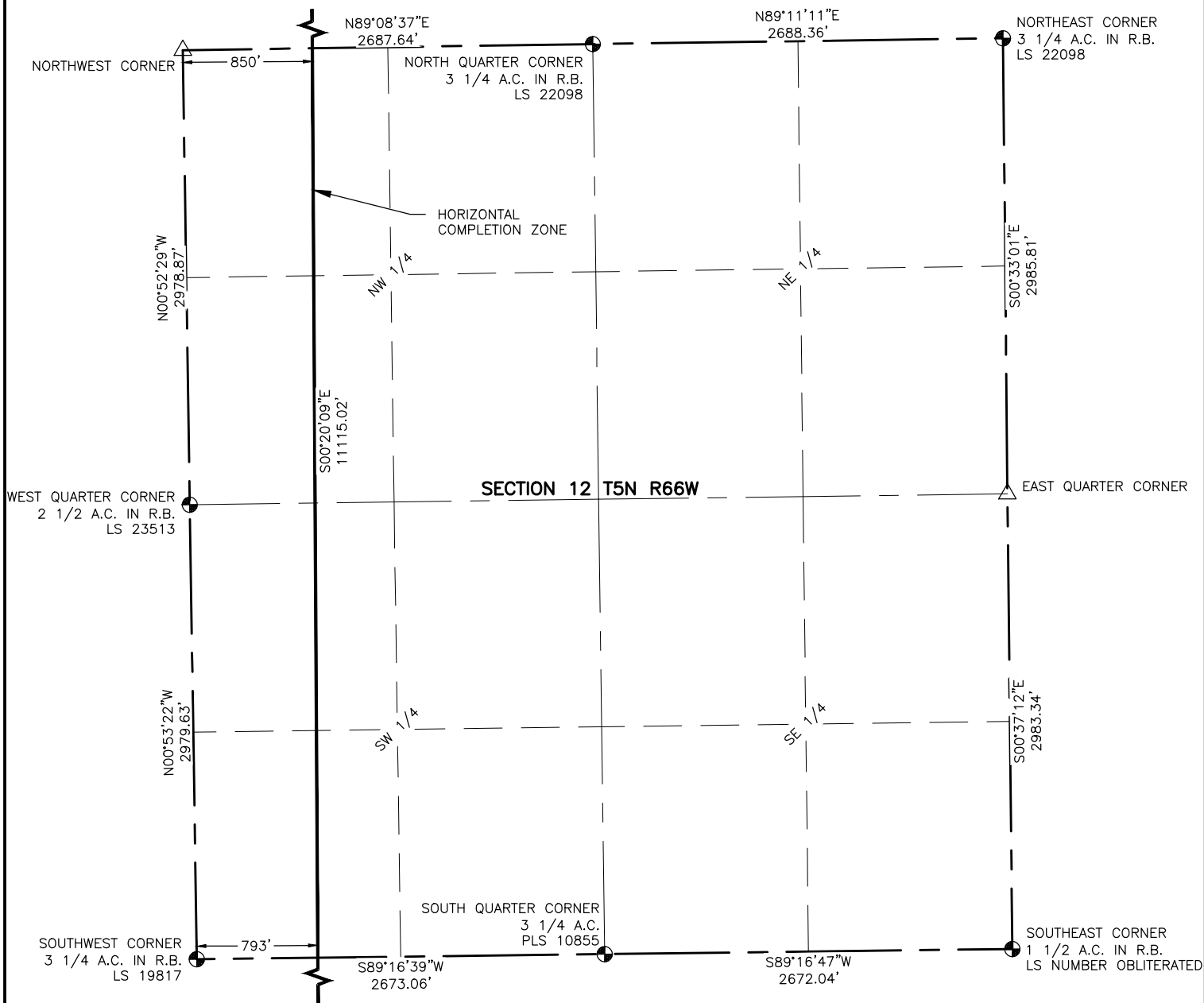
cogcc id
430474

project - task number
0210012.00-502

book and page
MR-01 5-6

surface - location
SW/4 SE/4 SEC 36 T6N R66W

path\filename P:_Engineering\0210012 MRI C Street\DRAWINGS\EXHIBITS\0210012EXWPEA-C.dwg

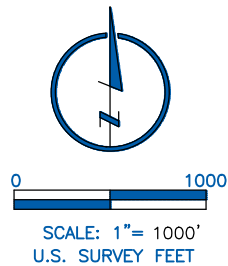


NOTES:

- DISTANCES ARE MEASURED PERPENDICULAR TO NEAREST SECTION LINE AND ARE SHOWN ON THE SAME SIDE OF THE SECTION LINE WHERE THE WELL IS LOCATED.
- THIS MAP DOES NOT REPRESENT A MONUMENTED BOUNDARY SURVEY. SIXTEENTH CORNER LOCATIONS ARE COMPUTED, UNLESS OTHERWISE NOTED.
- BOTTOM HOLE LOCATIONS AND HORIZONTAL COMPLETION ZONE PROVIDED BY OTHERS.

LEGEND

- ALIQUOT CORNER
- BOTTOM HOLE
- COMPUTED ALIQUOT CORNERS FROM MONUMENT ACCESSORIES
- PROPOSED WELL
- A.C. ALUMINUM CAP
- R.B. RANGE BOX



LAMP RYNEARSON
& ASSOCIATES

4715 Innovation Drive 970.226.0342 | P
Fort Collins, CO 80525 970.226.0879 | F
www.LRA-Inc.com

Proposed Well Location Exhibit
CS-Scott C2-1-13
3 of 4

drawn by
KJW

date
10/15/15

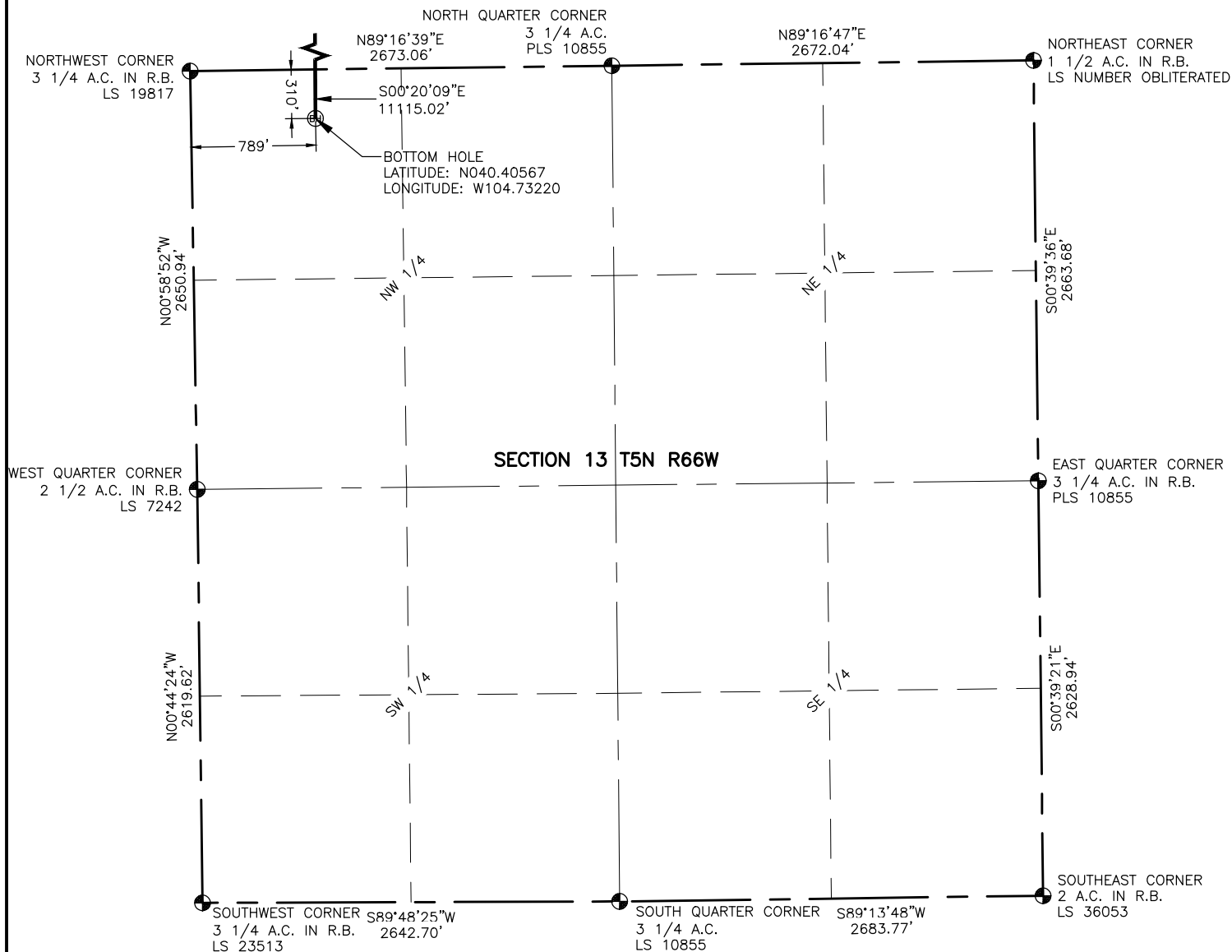
cogcc id
430474

project - task number
0210012.00-502

book and page
MR-01 5-6

surface - location
SW/4 SE/4 SEC 36 T6N R66W

path\filename P:_Engineering\0210012 MRI C Street\DRAWINGS\EXHIBITS\0210012EXWPEB-C.dwg

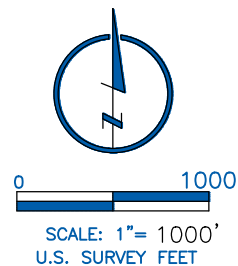


NOTES:

- DISTANCES ARE MEASURED PERPENDICULAR TO NEAREST SECTION LINE AND ARE SHOWN ON THE SAME SIDE OF THE SECTION LINE WHERE THE WELL IS LOCATED.
- THIS MAP DOES NOT REPRESENT A MONUMENTED BOUNDARY SURVEY. SIXTEENTH CORNER LOCATIONS ARE COMPUTED, UNLESS OTHERWISE NOTED.
- BOTTOM HOLE LOCATIONS AND HORIZONTAL COMPLETION ZONE PROVIDED BY OTHERS.

LEGEND

- ALIQUOT CORNER
- BOTTOM HOLE
- COMPUTED ALIQUOT CORNERS FROM MONUMENT ACCESSORIES
- PROPOSED WELL
- A.C. ALUMINUM CAP
- R.B. RANGE BOX



LAMP RYNEARSON
& ASSOCIATES

4715 Innovation Drive 970.226.0342 | P
Fort Collins, CO 80525 970.226.0879 | F
www.LRA-Inc.com

Proposed Well Location Exhibit
CS—Scott C2—1—13
4 of 4

drawn by
KJW

date
10/15/15

cogcc id
430474

project - task number
0210012.00—502

book and page
MR—01 5—6

surface - location
SW/4 SE/4 SEC 36 T6N R66W

path\filename P:_Engineering\0210012 MRI C Street\DRAWINGS\EXHIBITS\0210012EXWPEC—C.dwg