



BOND CEMENT AND/OR SONIC SEISMOGRAM LOG

GAMMA RAY

FILING NO.

HBC-GR-SS-72940

COMPANY CHEVRON OIL COMPANY

WELL FEE #91 X

FIELD RANGELY

COUNTY RIO BLANCO STATE COLORADO

LOCATION:

2633' SNL & 5' MEL

OTHER SERVICES:

SEC. TWP. RGE.

GL ELEV. 5304'

ELEVATIONS: KB. 5316' DF. GL. 5304'

PERMANENT DATUM LOG MEASURED FROM

DRILLING MEASURED FROM

DATE 4-4-74

RUN NO.

TYPE LOG GR-BOND CEMENT-SONIC SEISMOGRAM

DEPTH-DRILLER 6555'

DEPTH-LOGGER 6562'

BOTTOM LOGGED INTERVAL 6560'

TOP LOGGED INTERVAL 3100'

TYPE FLUID IN HOLE WATER

SALINITY PPM CL.

DENSITY LB./GAL.

LEVEL FULL

MAX. REC. TEMP. DEG. F.

OPR. RIG TIME RIZZI

WITNESSED BY MR. COOK

BORE HOLE RECORD

NO. BIT FROM TO SIZE WGT. FROM TO

8-3/4" 788' TD 10-3/4" 7" 23# 0 788' TD

CASING RECORD

THIS HEADING AND LOG CONFORMS TO API RECOMMENDED STANDARD PRACTICE RP-33 (AP)

LOGGING AND EQUIPMENT DATA (BOND CEMENT LOG)

DATE RECORDED	4-4-74	TOOL MODEL NO.	GBCS-3.5-G
TIME STARTED		DIAMETER	3.5"
TIME FINISHED		LENGTH	17' (4' SPACING)
LOGGED INTERVAL	6560' - 3100'		
LOGGED CEMENT TOP			

CEMENTING DATA

	1	2	SQUEEZE NO. 1	SQUEEZE NO. 2	SQUEEZE
DATE AND HOUR SET					
SETTING TIME (HRS)					
TYPE CEMENT					
SACKS USED					
PRECEDING FLUID					
% ADDITIVE					
% RETARDER					
SLURRY WT.					
BREAKDOWN PRESS.					
SURFACE MAX. PRESS.					
BOTTOM MAX. PRESS.					

GAMMA RAY

RUN NO. ONE
TOOL MODEL NO. GBCS-3.5-G
DIAM. 3.5"
DETECT. MODEL NO. 131
TYPE SCINT.
LENGTH 3"
DIST. TO N. SOURCE

NEUTRON

RUN NO.
LOG TYPE
TOOL MODEL NO.
DIAM.
DETECT. MODEL NO.
TYPE
LENGTH
SOURCE MODEL NO.

GENERAL

HOIST TRUCK NO. 1946
INST. TRUCK NO. 1946
TOOL SERIAL NO.
LOG TICKET NO. 60367

SERIAL NO.
SPACING
TYPE
STRENGTH

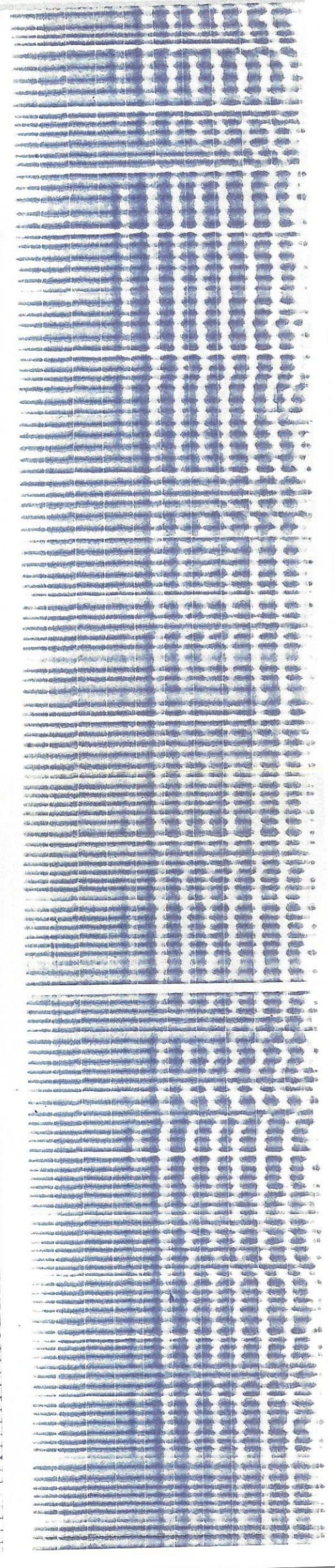
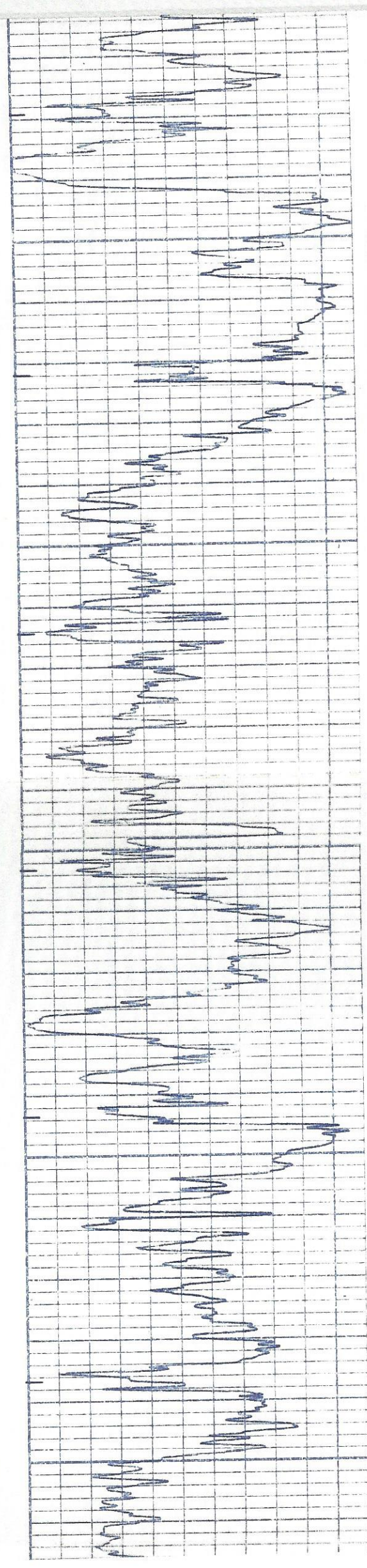
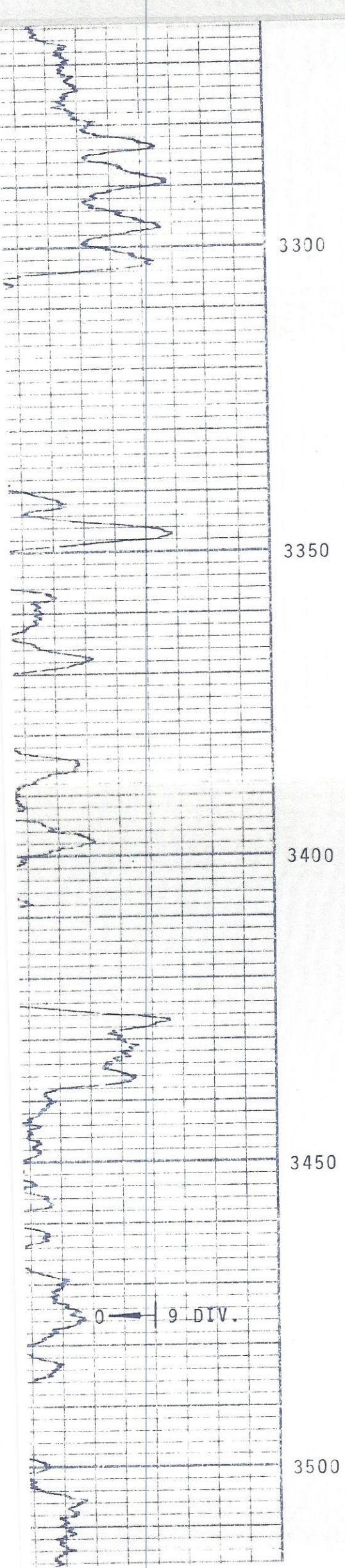
LOGGING DATA

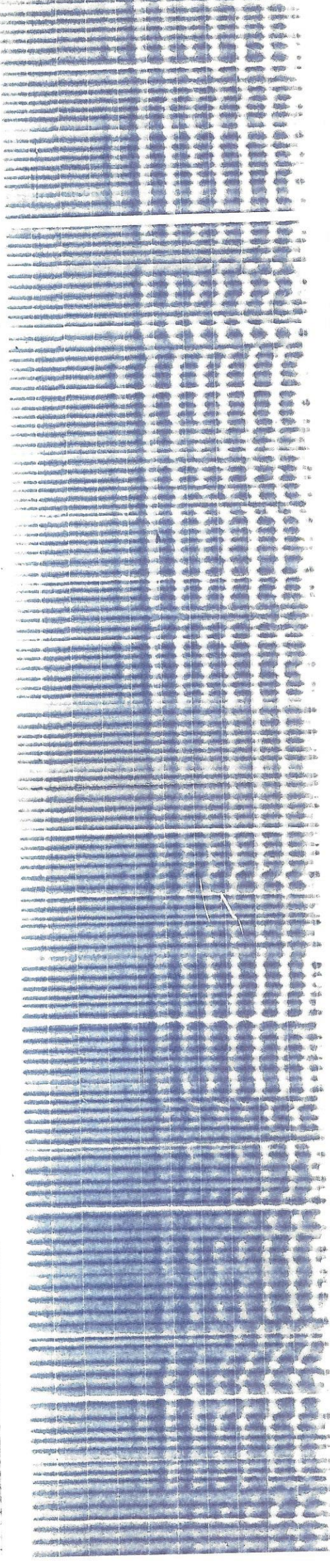
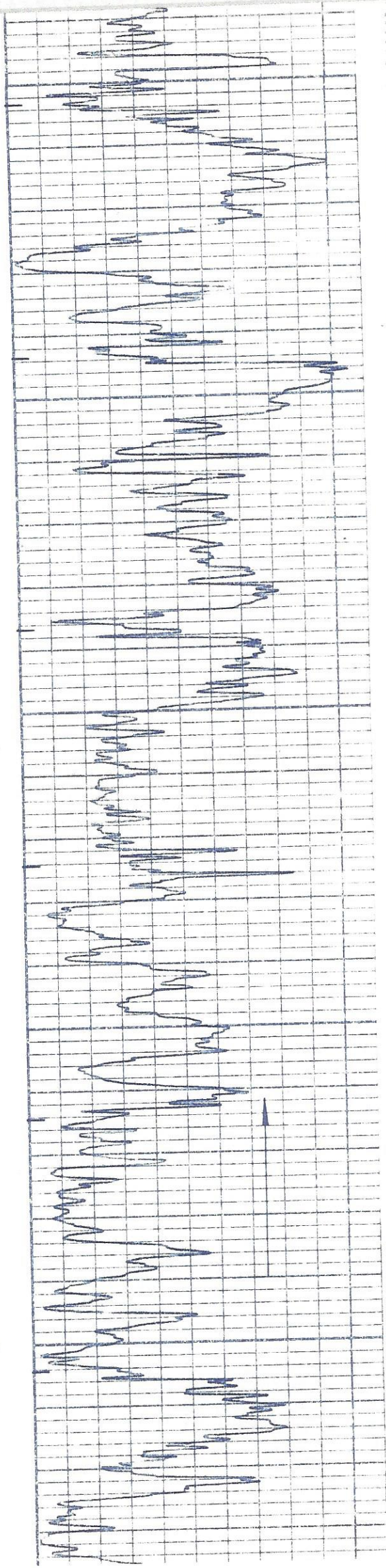
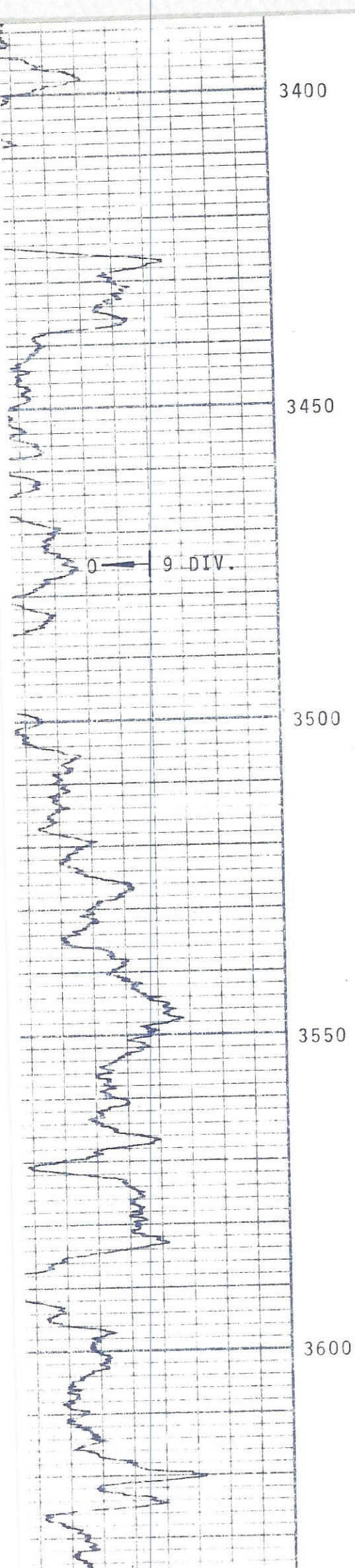
GENERAL

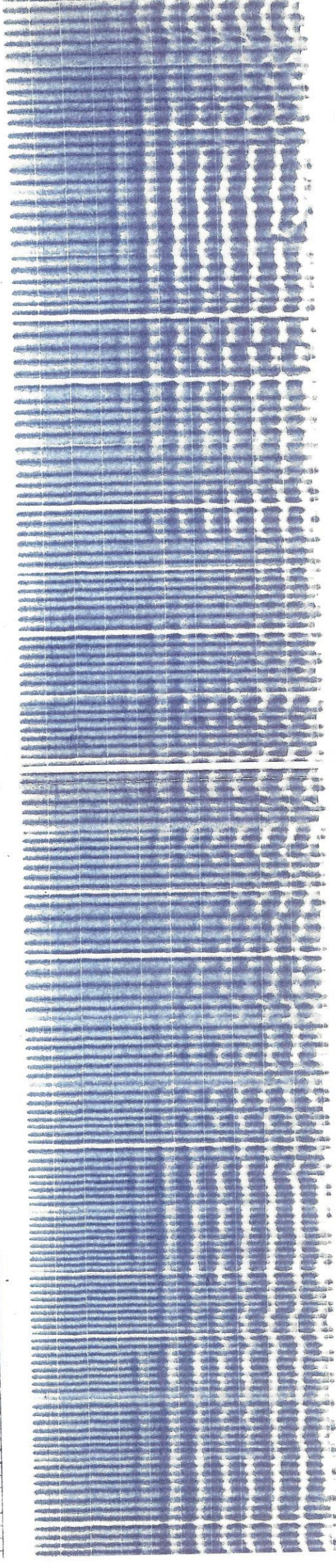
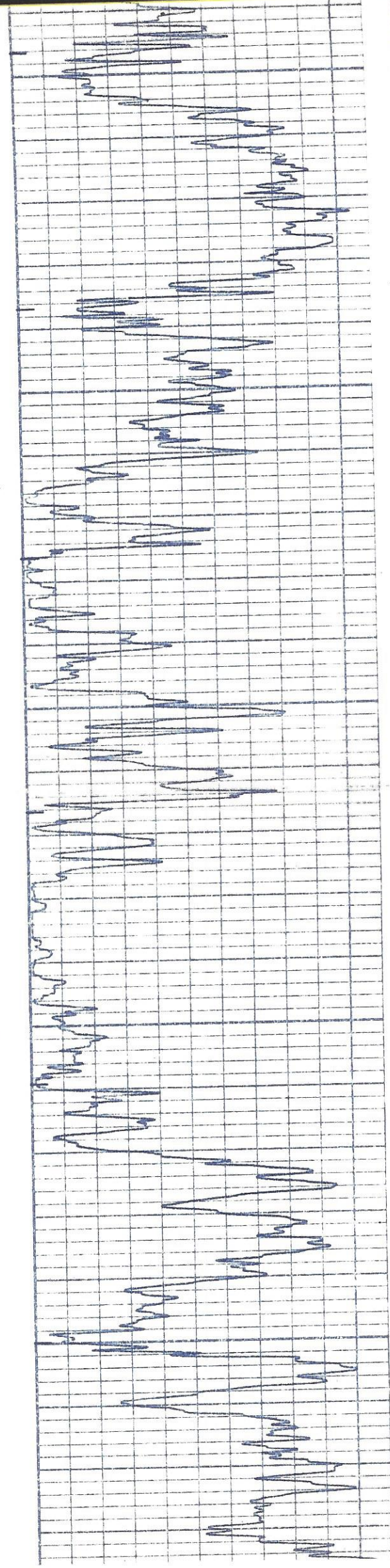
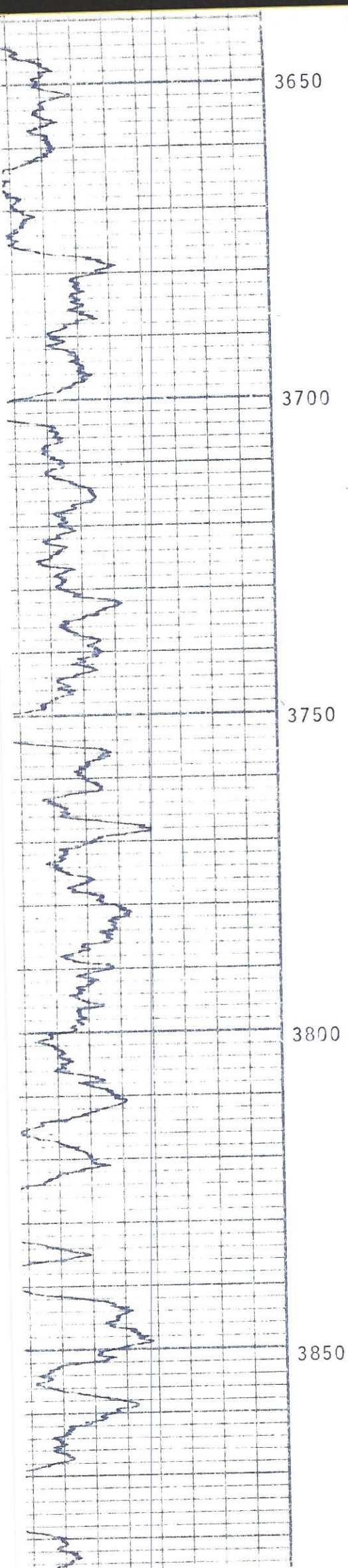
GAMMA RAY

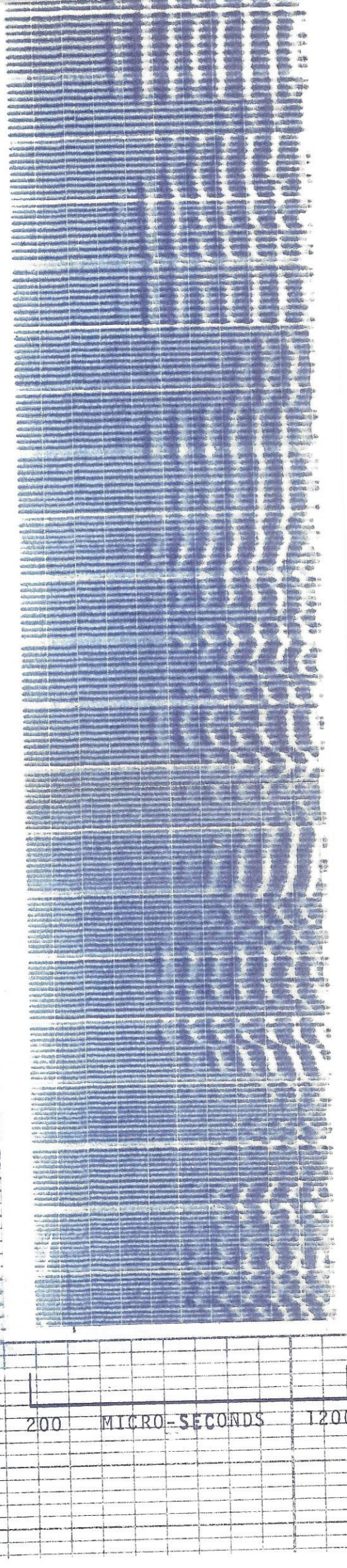
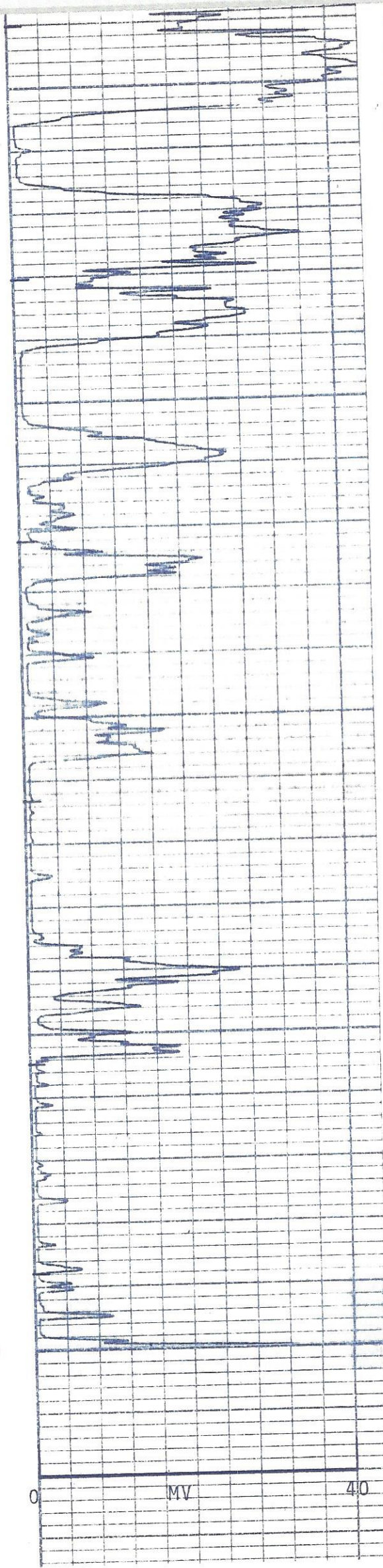
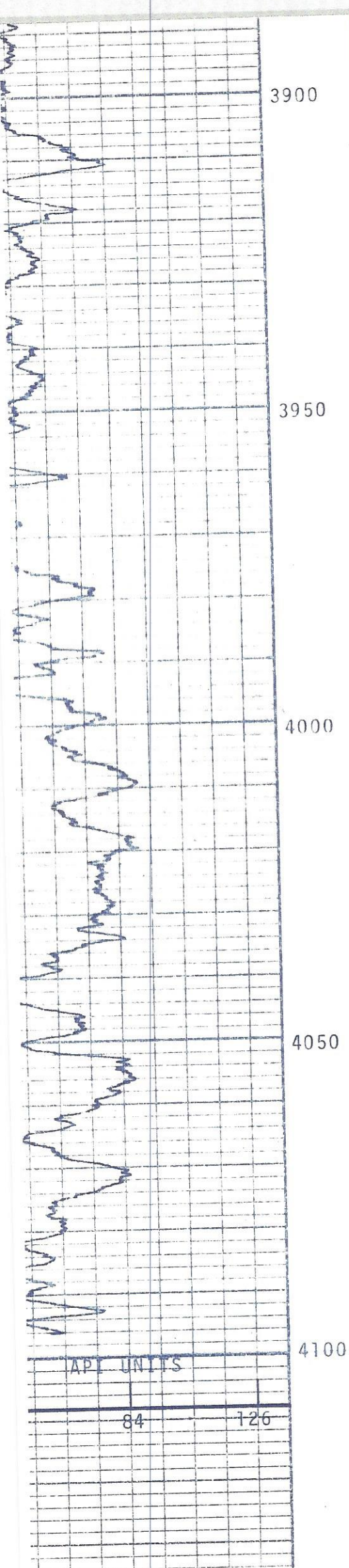
NEUTRON

RUN DEPTHS SPEED T.C. SENS. ZERO API G.R. UNITS T.C. SENS. ZERO API









DID NOT LOG THIS INTERVAL

API UNITS

84

126

0

MV

40

200

MICRO-SECONDS

1200

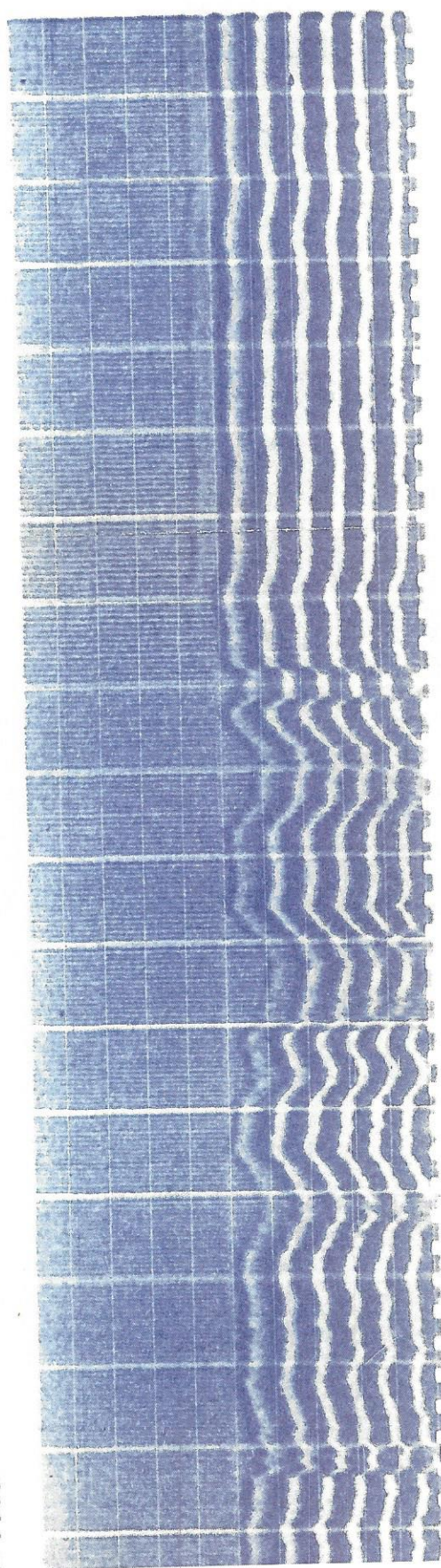
5750

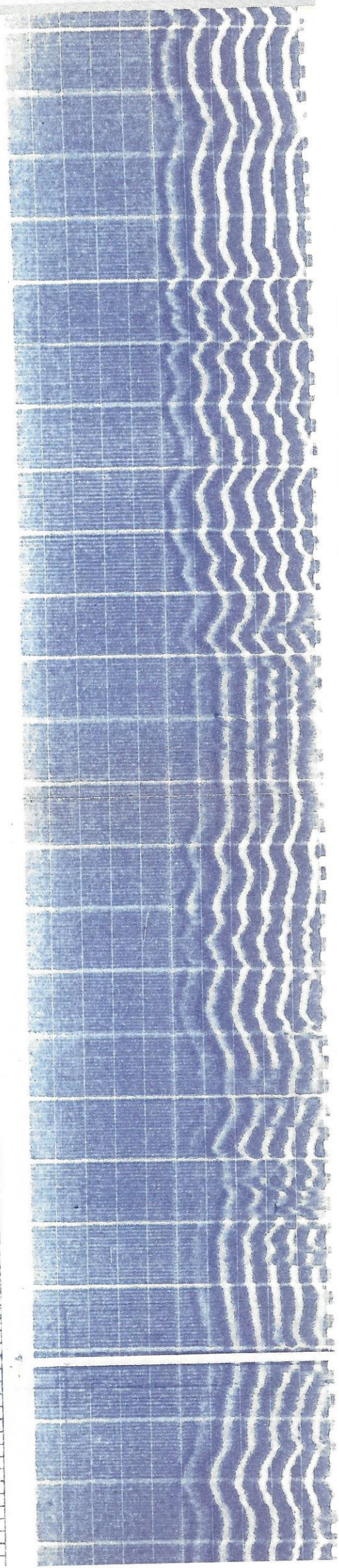
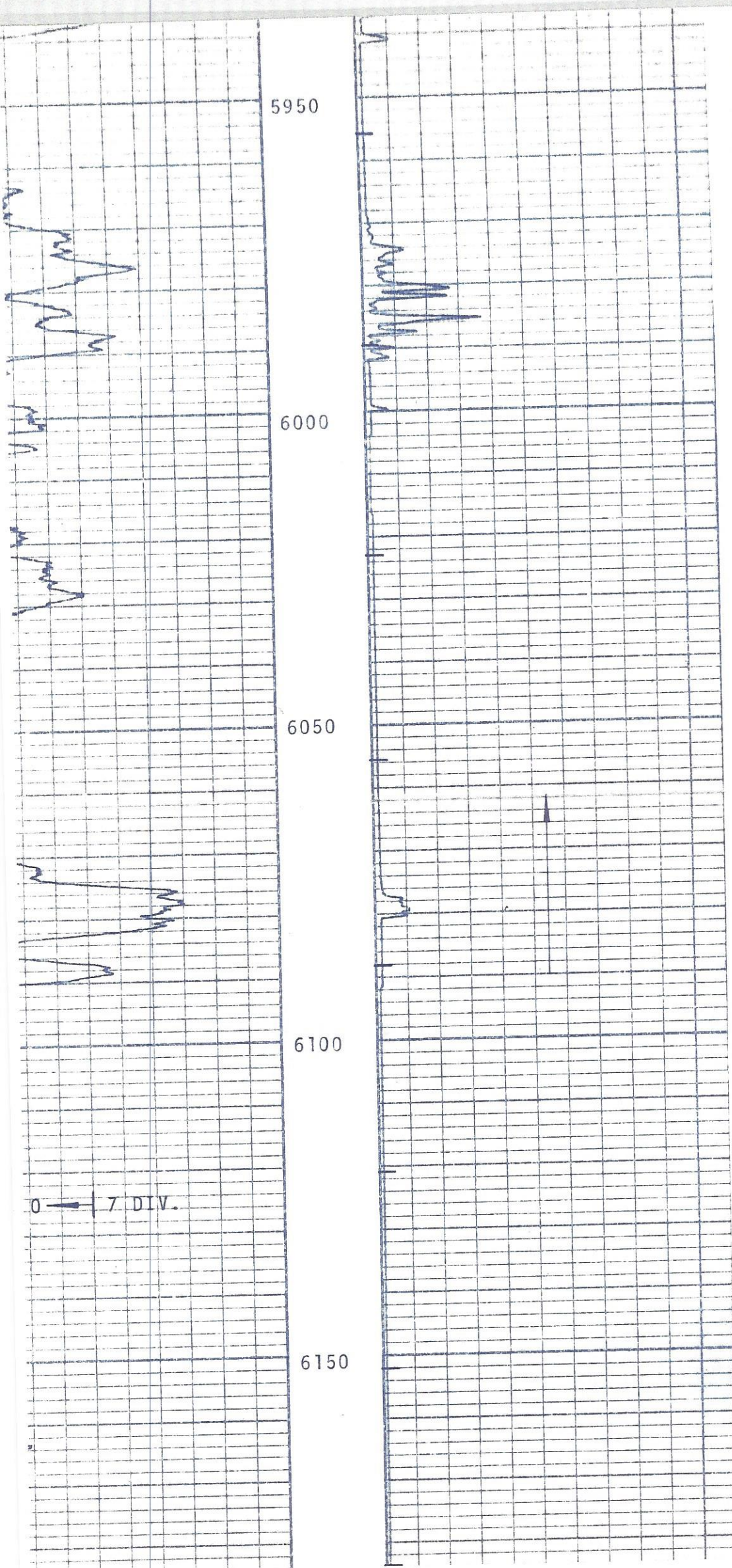
7"

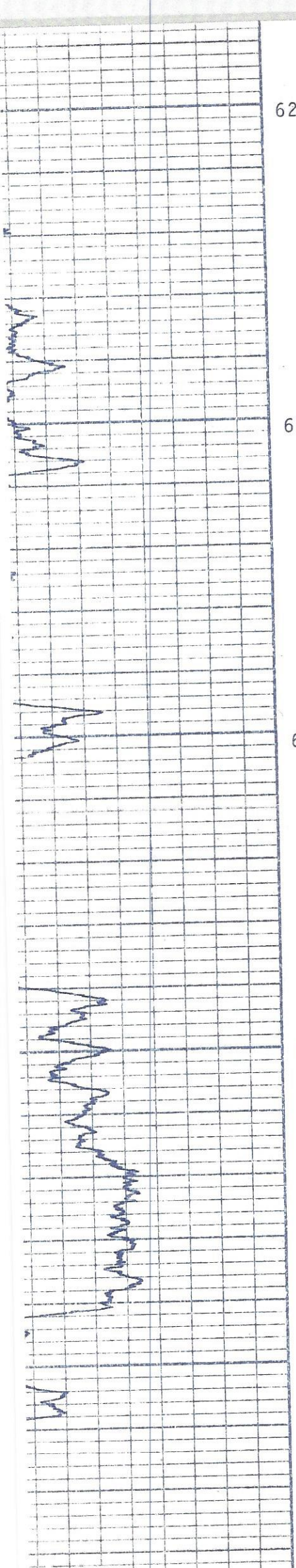
5800

5850

5900







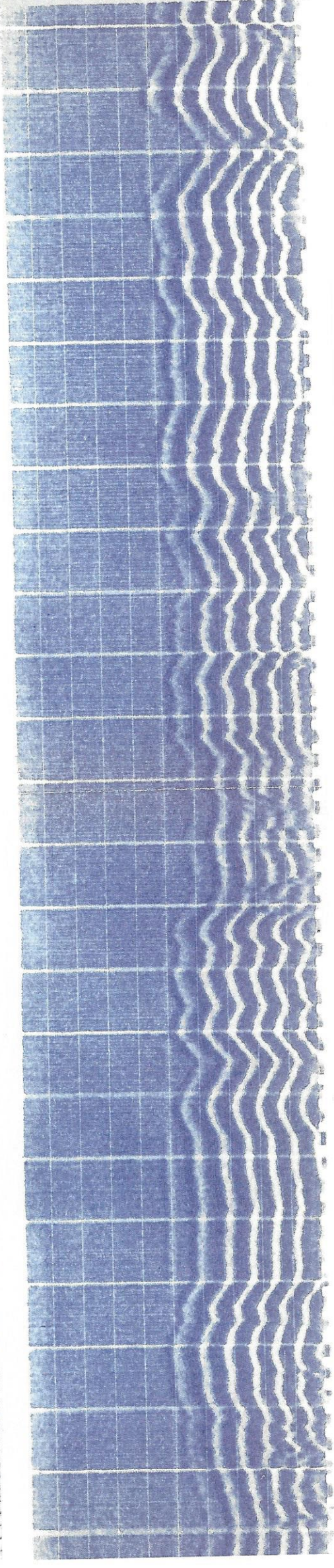
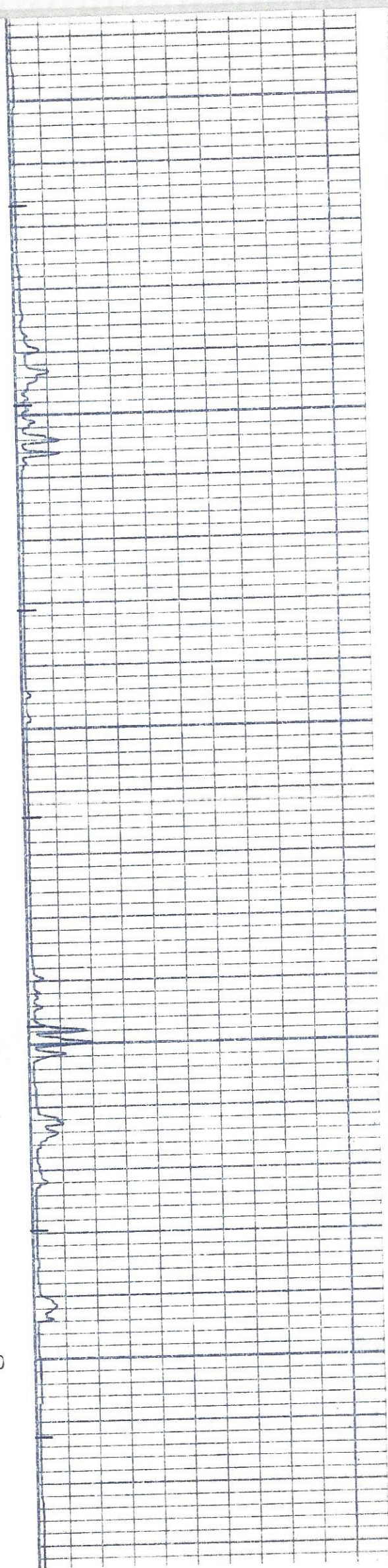
6200

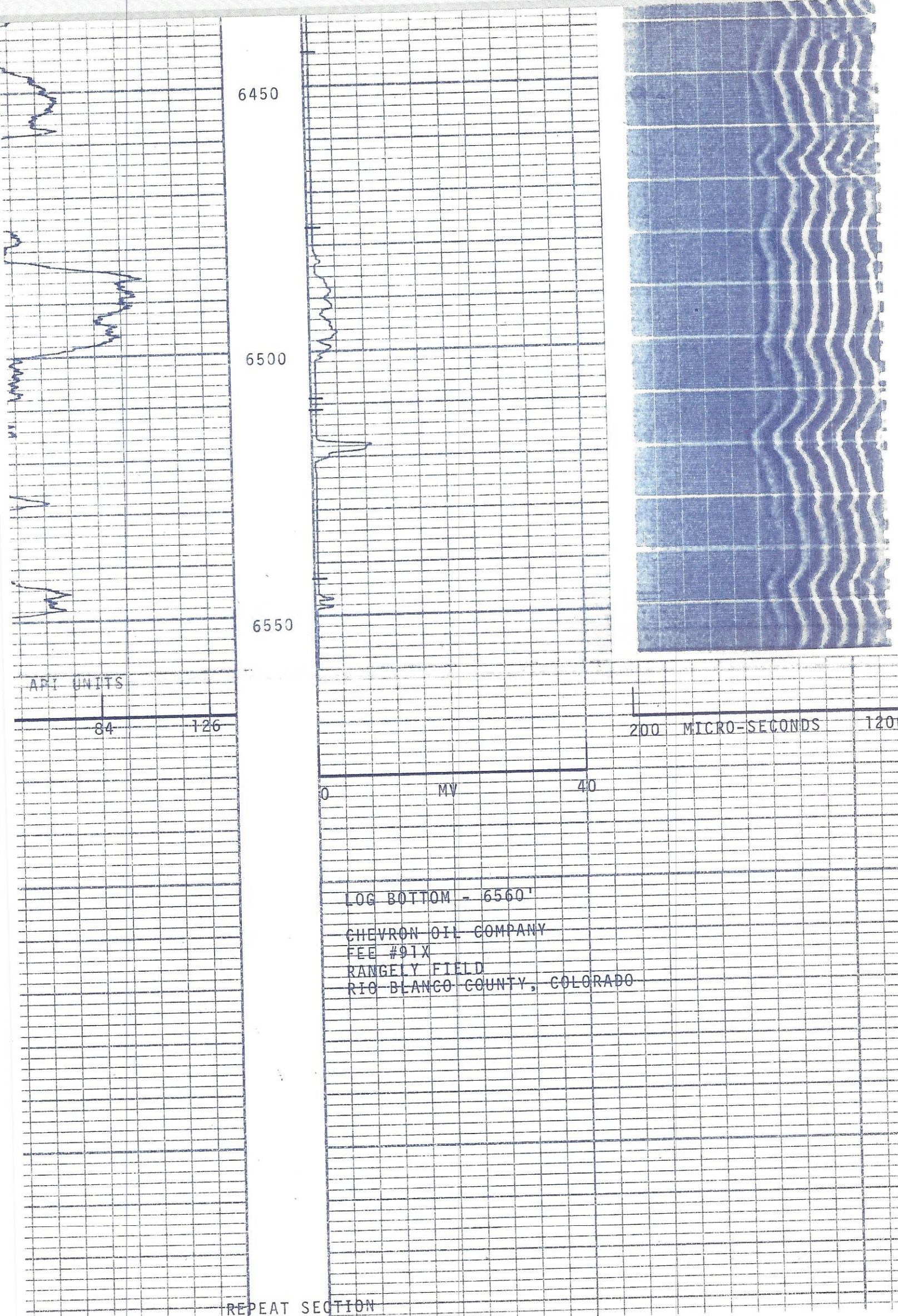
6250

6300

6350

6400





6450

6500

6550

API UNITS

84

126

200 MICRO-SECONDS

1200

0

MV

40

LOG BOTTOM - 6560'

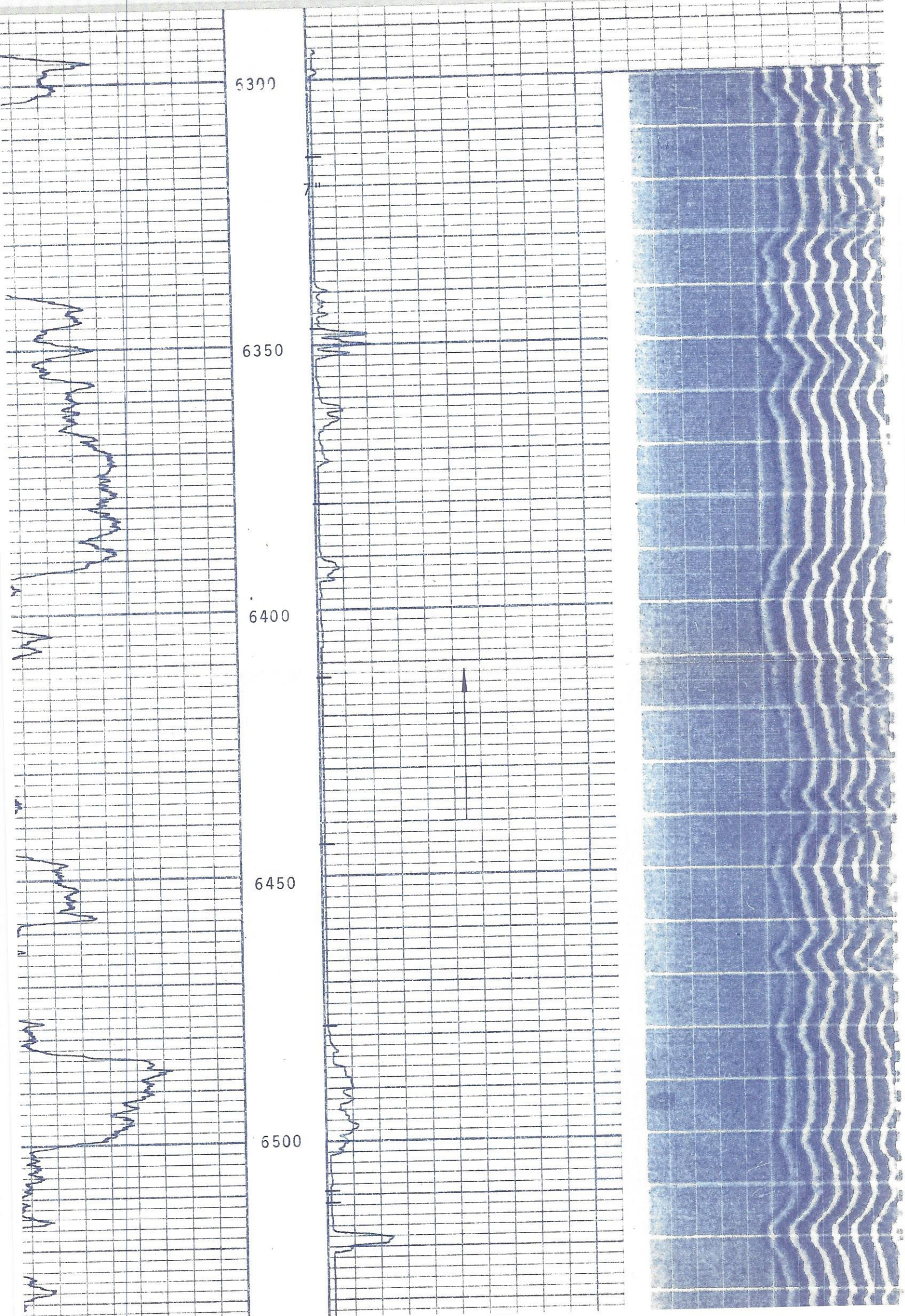
CHEVRON OIL COMPANY

FEE #91X

RANGELY FIELD

RIO BLANCO COUNTY, COLORADO

REPEAT SECTION



6550

SCOPE PICTURES

FREE PIPE AT 3100'

BONDED PIPE AT 6560'

