

EXTRACTION OIL & GAS

WELD COUNTY, COLORADO (NAD 83)

NW SW SEC. 13 T2N R68W 6th P.M.

JOHNSON TRUST 9

ORIGINAL WELLBORE

08 October, 2014

Plan: PROPOSAL #1



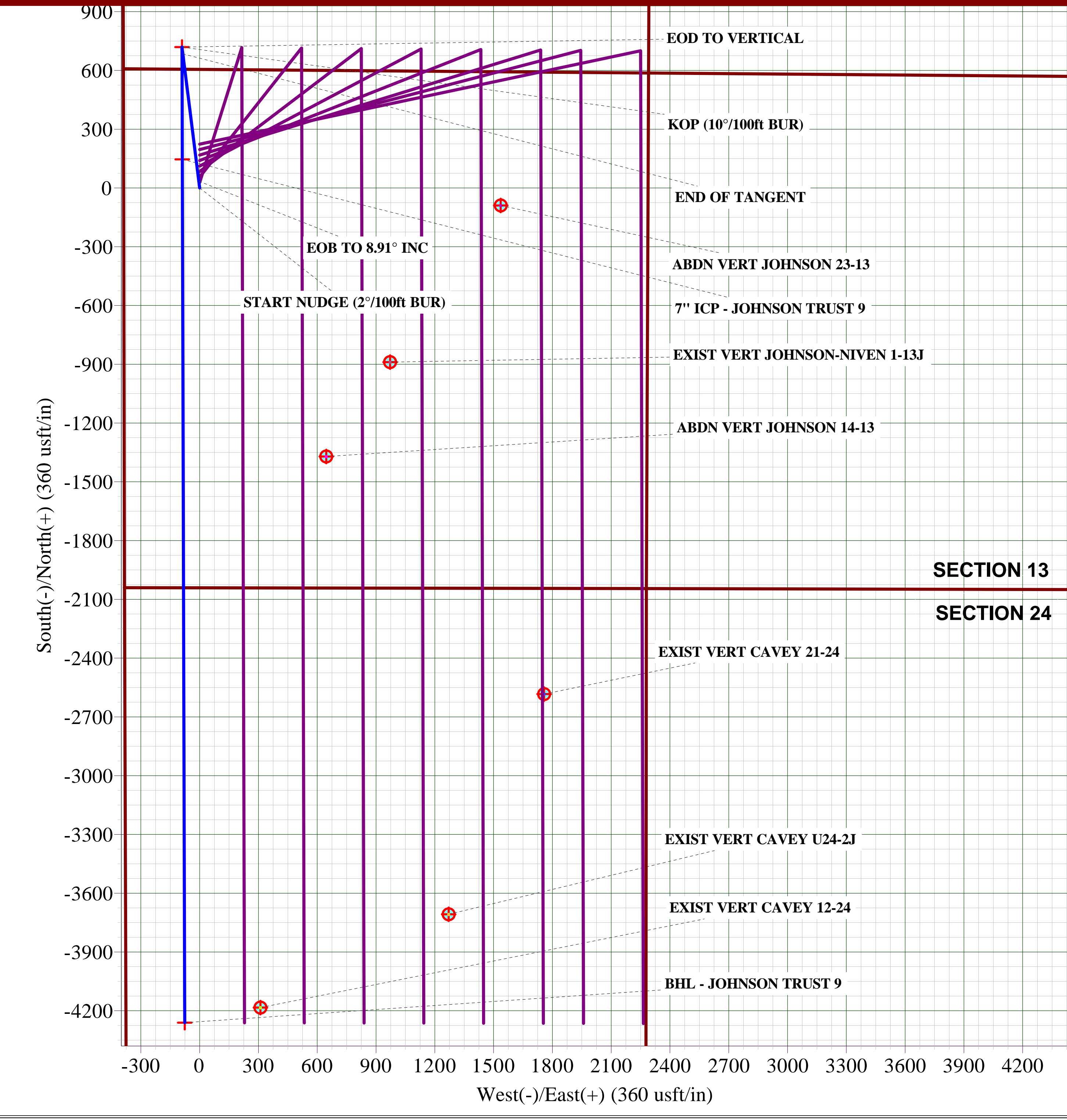
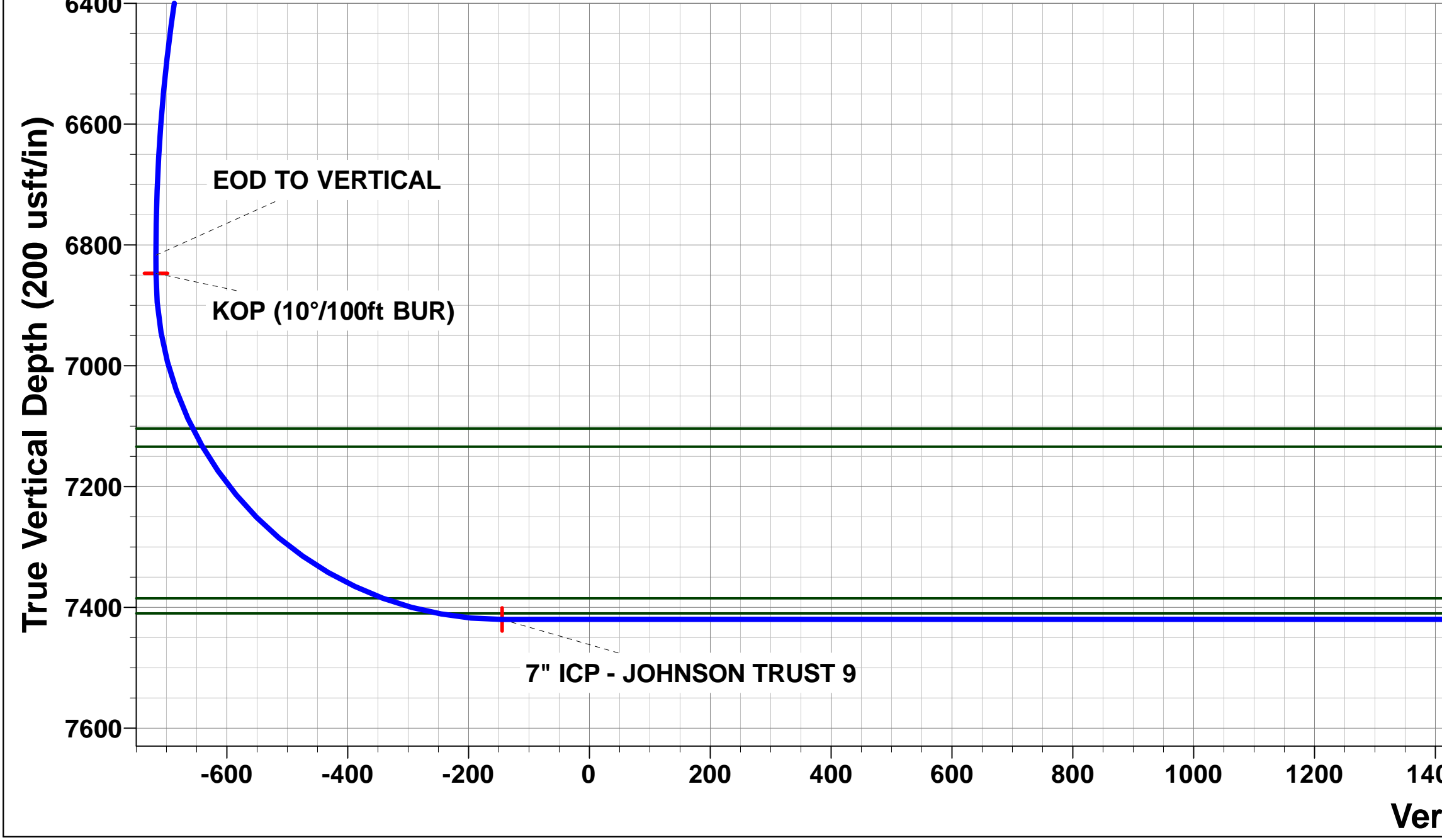
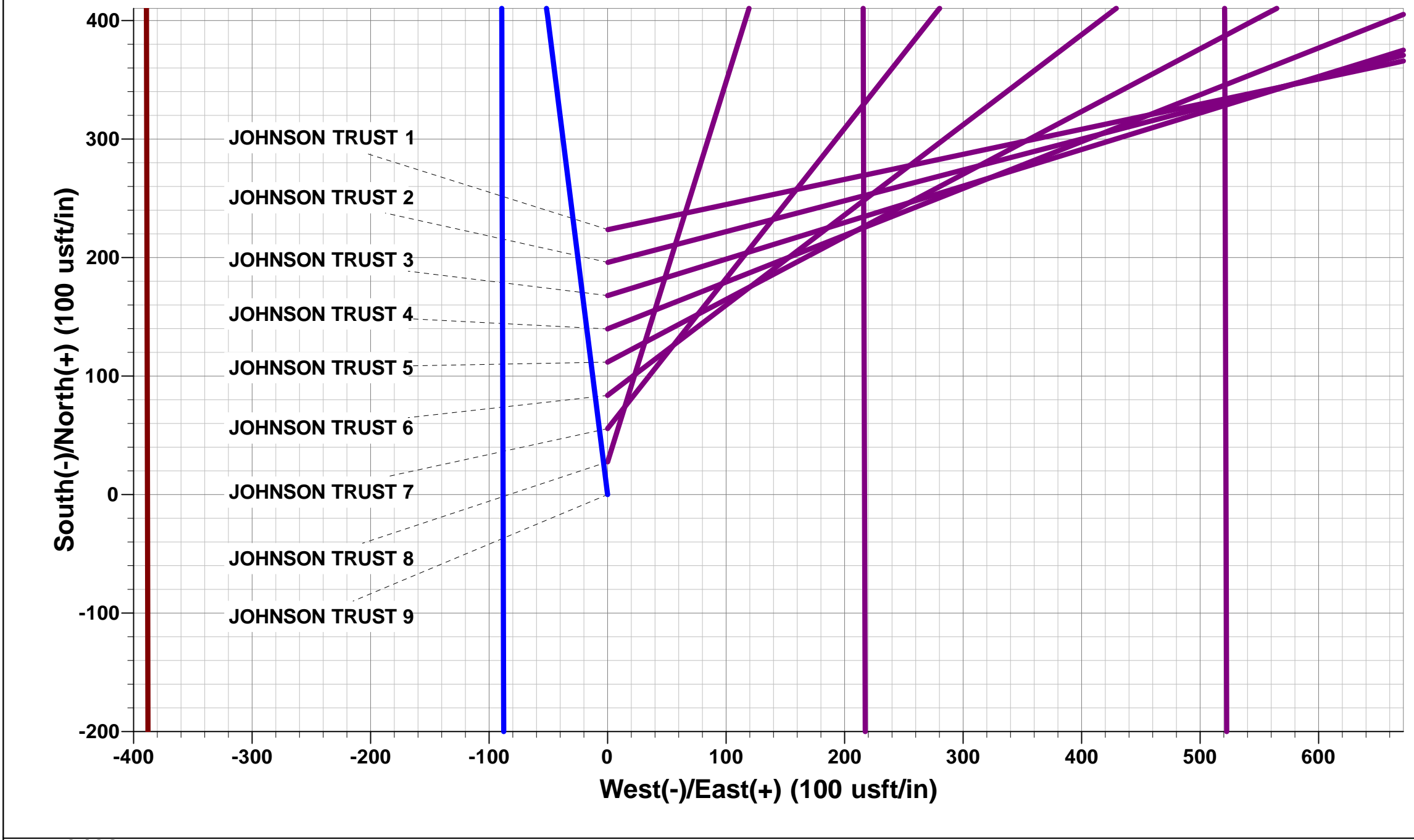
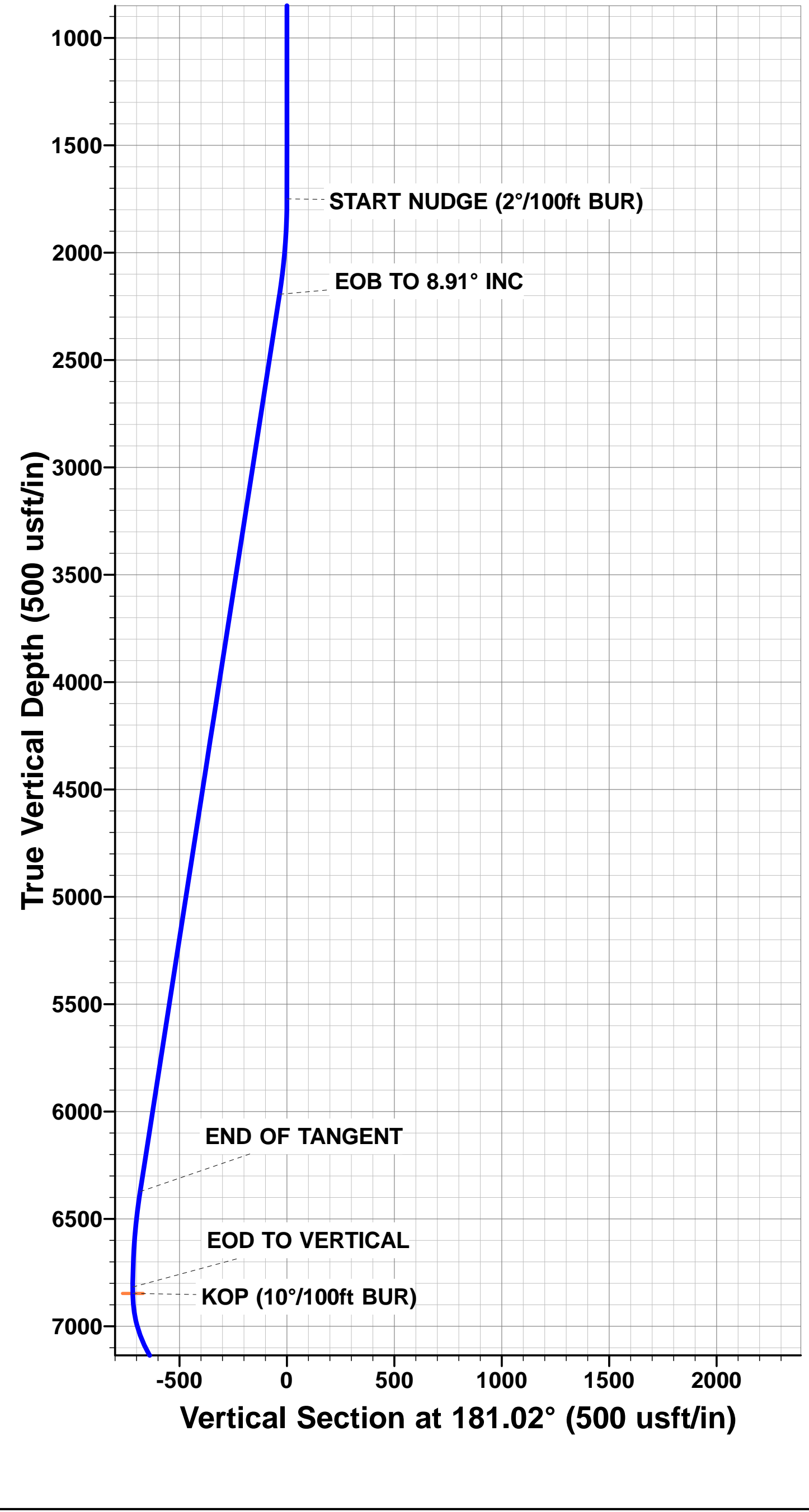


Project: WELD COUNTY, COLORADO (NAD 83)
Site: NW SW SEC. 13 T2N R68W 6th P.M.
Well: JOHNSON TRUST 9
Wellbore: ORIGINAL WELLBORE
Design: PROPOSAL #1

ANNOTATIONS								
TVD	MD	Inc	Azi	+N/-S	+E/-W	VSect	Dep	Annotation
1750.0	1750.0	0.00	0.00	0.0	0.0	0.0	0.0	START NUDGE (2°/100ft BUR)
2193.9	2195.7	8.91	352.85	34.3	-4.3	-34.3	34.6	EOB TO 8.91° INC
6373.1	6426.0	8.91	352.85	684.8	-85.9	-683.1	690.1	END OF TANGENT
6817.0	6871.7	0.00	0.00	719.1	-90.2	-717.4	724.7	EOD TO VERTICAL
6847.0	6901.7	0.00	0.00	719.1	-90.2	-717.4	724.7	KOP (10°/100ft BUR)
7420.0	7801.8	90.00	179.84	146.1	-88.6	-144.5	1297.7	7" ICP - JOHNSON TRUST 9
7420.0	12208.7	90.00	179.83	-4260.8	-76.1	4261.5	5704.6	BHL - JOHNSON TRUST 9

PROPOSED LOCAL COORDINATES:
SHL: 2041ft FSL & 388ft FWL Sec 13
7" ICP: 2187ft FSL & 300ft FWL Sec 13
BHL: 2220ft FNL & 300ft FWL Sec 24

WELLBORE TARGET DETAILS (LAT/LONG)					
Name	TVD	+N/-S	+E/-W	Latitude	Longitude
KOP - JOHNSON TRUST 9	6847.0	719.1	-90.2	40.139006	-104.959943
7" ICP - JOHNSON TRUST 9	7420.0	146.1	-88.6	40.137433	-104.959937
BHL - JOHNSON TRUST 9	7420.0	-4260.8	-76.1	40.125336	-104.959892



Planning Report



Database:	EDM 5000.1 Single User Db	Local Co-ordinate Reference:	Well JOHNSON TRUST 9
Company:	EXTRACTION OIL & GAS	TVD Reference:	KB-EST @ 4946.0usft (Original Well Elev)
Project:	WELD COUNTY, COLORADO (NAD 83)	MD Reference:	KB-EST @ 4946.0usft (Original Well Elev)
Site:	NW SW SEC. 13 T2N R68W 6th P.M.	North Reference:	True
Well:	JOHNSON TRUST 9	Survey Calculation Method:	Minimum Curvature
Wellbore:	ORIGINAL WELLBORE		
Design:	PROPOSAL #1		

Project	WELD COUNTY, COLORADO (NAD 83)		
Map System:	US State Plane 1983	System Datum:	Mean Sea Level
Geo Datum:	North American Datum 1983		
Map Zone:	Colorado Northern Zone		Using geodetic scale factor

Site	NW SW SEC. 13 T2N R68W 6th P.M.		
Site Position:		Northing:	1,293,448.40 usft
From:	Lat/Long	Easting:	3,151,083.18 usft
Position Uncertainty:	0.0 usft	Slot Radius:	1.10000ft
		Latitude:	40.137646
		Longitude:	-104.959619
		Grid Convergence:	0.35 °

Well	JOHNSON TRUST 9		
Well Position	+N/-S	-223.7 usft	Northing:
	+E/-W	-0.3 usft	Easting:
Position Uncertainty		0.0 usft	Wellhead Elevation:
			Latitude:
			Longitude:
			Ground Level:

Wellbore	ORIGINAL WELLBORE				
Magnetics	Model Name	Sample Date	Declination (°)	Dip Angle (°)	Field Strength (nT)
	IGRF2010	08/10/2014	8.50	66.69	52,623

Design	PROPOSAL #1			
Audit Notes:				
Version:	Phase:	PROTOTYPE	Tie On Depth:	0.0
Vertical Section:	Depth From (TVD) (usft)	+N/-S (usft)	+E/-W (usft)	Direction (°)
	7,420.0	0.0	0.0	181.02

Plan Sections											
MD (usft)	Inc (°)	Azi (°)	Vertical Depth	SS (usft)	+N/-S (usft)	+E/-W (usft)	Dogleg Rate (°/100usft)	Build Rate (°/100usft)	Turn Rate (°/100usft)	TFO (°)	Target
0.0	0.00	0.00	0.0	-4,946.0	0.0	0.0	0.00	0.00	0.00	0.00	
1,750.0	0.00	0.00	1,750.0	-3,196.0	0.0	0.0	0.00	0.00	0.00	0.00	
2,195.7	8.91	352.85	2,193.9	-2,752.1	34.3	-4.3	2.00	2.00	0.00	352.85	
6,426.0	8.91	352.85	6,373.1	1,427.1	684.8	-85.9	0.00	0.00	0.00	0.00	
6,871.7	0.00	0.00	6,817.0	1,871.0	719.1	-90.2	2.00	-2.00	0.00	180.00	
6,901.7	0.00	0.00	6,847.0	1,901.0	719.1	-90.2	0.00	0.00	0.00	0.00	KOP - JOHNSON T
7,801.8	90.00	179.84	7,420.0	2,474.0	146.1	-88.6	10.00	10.00	19.98	179.84	7" ICP - JOHNSON
12,208.7	90.00	179.83	7,420.0	2,474.0	-4,260.8	-76.1	0.00	0.00	0.00	-99.59	BHL - JOHNSON T

Planning Report



Database:	EDM 5000.1 Single User Db	Local Co-ordinate Reference:	Well JOHNSON TRUST 9
Company:	EXTRACTION OIL & GAS	TVD Reference:	KB-EST @ 4946.0usft (Original Well Elev)
Project:	WELD COUNTY, COLORADO (NAD 83)	MD Reference:	KB-EST @ 4946.0usft (Original Well Elev)
Site:	NW SW SEC. 13 T2N R6W 6th P.M.	North Reference:	True
Well:	JOHNSON TRUST 9	Survey Calculation Method:	Minimum Curvature
Wellbore:	ORIGINAL WELLBORE		
Design:	PROPOSAL #1		

Planned Survey

MD (usft)	Inc (°)	Azi (°)	TVD (usft)	SS (usft)	+N/-S (usft)	+E/-W (usft)	Vertical Section (usft)	Dogleg Rate (°/100usft)	Build Rate (°/100usft)	Turn Rate (°/100usft)
0.0	0.00	0.00	0.0	4,946.00	0.0	0.0	0.0	0.00	0.00	0.00
100.0	0.00	0.00	100.0	4,846.00	0.0	0.0	0.0	0.00	0.00	0.00
200.0	0.00	0.00	200.0	4,746.00	0.0	0.0	0.0	0.00	0.00	0.00
300.0	0.00	0.00	300.0	4,646.00	0.0	0.0	0.0	0.00	0.00	0.00
400.0	0.00	0.00	400.0	4,546.00	0.0	0.0	0.0	0.00	0.00	0.00
500.0	0.00	0.00	500.0	4,446.00	0.0	0.0	0.0	0.00	0.00	0.00
600.0	0.00	0.00	600.0	4,346.00	0.0	0.0	0.0	0.00	0.00	0.00
700.0	0.00	0.00	700.0	4,246.00	0.0	0.0	0.0	0.00	0.00	0.00
800.0	0.00	0.00	800.0	4,146.00	0.0	0.0	0.0	0.00	0.00	0.00
900.0	0.00	0.00	900.0	4,046.00	0.0	0.0	0.0	0.00	0.00	0.00
1,000.0	0.00	0.00	1,000.0	3,946.00	0.0	0.0	0.0	0.00	0.00	0.00
1,100.0	0.00	0.00	1,100.0	3,846.00	0.0	0.0	0.0	0.00	0.00	0.00
1,200.0	0.00	0.00	1,200.0	3,746.00	0.0	0.0	0.0	0.00	0.00	0.00
1,300.0	0.00	0.00	1,300.0	3,646.00	0.0	0.0	0.0	0.00	0.00	0.00
1,400.0	0.00	0.00	1,400.0	3,546.00	0.0	0.0	0.0	0.00	0.00	0.00
1,500.0	0.00	0.00	1,500.0	3,446.00	0.0	0.0	0.0	0.00	0.00	0.00
1,600.0	0.00	0.00	1,600.0	3,346.00	0.0	0.0	0.0	0.00	0.00	0.00
1,700.0	0.00	0.00	1,700.0	3,246.00	0.0	0.0	0.0	0.00	0.00	0.00
START NUDGE (2°/100ft BUR)										
1,750.0	0.00	0.00	1,750.0	3,196.00	0.0	0.0	0.0	0.00	0.00	0.00
1,800.0	1.00	352.85	1,800.0	3,146.00	0.4	-0.1	-0.4	2.00	2.00	0.00
1,900.0	3.00	352.85	1,899.9	3,046.07	3.9	-0.5	-3.9	2.00	2.00	0.00
2,000.0	5.00	352.85	1,999.7	2,946.32	10.8	-1.4	-10.8	2.00	2.00	0.00
2,100.0	7.00	352.85	2,099.1	2,846.87	21.2	-2.7	-21.1	2.00	2.00	0.00
EOB TO 8.91° INC										
2,195.7	8.91	352.85	2,193.9	2,752.07	34.3	-4.3	-34.3	2.00	2.00	0.00
2,200.0	8.91	352.85	2,198.2	2,747.85	35.0	-4.4	-34.9	0.00	0.00	0.00
2,300.0	8.91	352.85	2,296.9	2,649.06	50.4	-6.3	-50.2	0.00	0.00	0.00
2,400.0	8.91	352.85	2,395.7	2,550.26	65.7	-8.2	-65.6	0.00	0.00	0.00
2,500.0	8.91	352.85	2,494.5	2,451.47	81.1	-10.2	-80.9	0.00	0.00	0.00
2,600.0	8.91	352.85	2,593.3	2,352.68	96.5	-12.1	-96.3	0.00	0.00	0.00
2,700.0	8.91	352.85	2,692.1	2,253.89	111.9	-14.0	-111.6	0.00	0.00	0.00
2,800.0	8.91	352.85	2,790.9	2,155.10	127.2	-16.0	-126.9	0.00	0.00	0.00
2,900.0	8.91	352.85	2,889.7	2,056.30	142.6	-17.9	-142.3	0.00	0.00	0.00
3,000.0	8.91	352.85	2,988.5	1,957.51	158.0	-19.8	-157.6	0.00	0.00	0.00
3,100.0	8.91	352.85	3,087.3	1,858.72	173.4	-21.7	-173.0	0.00	0.00	0.00
3,200.0	8.91	352.85	3,186.1	1,759.93	188.7	-23.7	-188.3	0.00	0.00	0.00
3,300.0	8.91	352.85	3,284.9	1,661.14	204.1	-25.6	-203.6	0.00	0.00	0.00
3,400.0	8.91	352.85	3,383.7	1,562.34	219.5	-27.5	-219.0	0.00	0.00	0.00
3,500.0	8.91	352.85	3,482.4	1,463.55	234.9	-29.5	-234.3	0.00	0.00	0.00
3,600.0	8.91	352.85	3,581.2	1,364.76	250.3	-31.4	-249.7	0.00	0.00	0.00
PARKMAN										
3,651.4	8.91	352.85	3,632.0	1,314.00	258.2	-32.4	-257.5	0.00	0.00	0.00
3,700.0	8.91	352.85	3,680.0	1,265.97	265.6	-33.3	-265.0	0.00	0.00	0.00
3,800.0	8.91	352.85	3,778.8	1,167.18	281.0	-35.2	-280.3	0.00	0.00	0.00
3,900.0	8.91	352.85	3,877.6	1,068.38	296.4	-37.2	-295.7	0.00	0.00	0.00
4,000.0	8.91	352.85	3,976.4	969.59	311.8	-39.1	-311.0	0.00	0.00	0.00
4,100.0	8.91	352.85	4,075.2	870.80	327.1	-41.0	-326.3	0.00	0.00	0.00
4,200.0	8.91	352.85	4,174.0	772.01	342.5	-43.0	-341.7	0.00	0.00	0.00
4,300.0	8.91	352.85	4,272.8	673.21	357.9	-44.9	-357.0	0.00	0.00	0.00
4,400.0	8.91	352.85	4,371.6	574.42	373.3	-46.8	-372.4	0.00	0.00	0.00
SUSSEX										
4,479.4	8.91	352.85	4,450.0	496.00	385.5	-48.4	-384.5	0.00	0.00	0.00
4,500.0	8.91	352.85	4,470.4	475.63	388.6	-48.7	-387.7	0.00	0.00	0.00

Database:	EDM 5000.1 Single User Db	Local Co-ordinate Reference:	Well JOHNSON TRUST 9
Company:	EXTRACTION OIL & GAS	TVD Reference:	KB-EST @ 4946.0usft (Original Well Elev)
Project:	WELD COUNTY, COLORADO (NAD 83)	MD Reference:	KB-EST @ 4946.0usft (Original Well Elev)
Site:	NW SW SEC. 13 T2N R68W 6th P.M.	North Reference:	True
Well:	JOHNSON TRUST 9	Survey Calculation Method:	Minimum Curvature
Wellbore:	ORIGINAL WELLBORE		
Design:	PROPOSAL #1		

Planned Survey

MD (usft)	Inc (°)	Azi (°)	TVD (usft)	SS (usft)	+N/-S (usft)	+E/-W (usft)	Vertical Section (usft)	Dogleg Rate (°/100usft)	Build Rate (°/100usft)	Turn Rate (°/100usft)
4,600.0	8.91	352.85	4,569.2	376.84	404.0	-50.7	-403.0	0.00	0.00	0.00
4,700.0	8.91	352.85	4,668.0	278.05	419.4	-52.6	-418.4	0.00	0.00	0.00
4,800.0	8.91	352.85	4,766.7	179.25	434.8	-54.5	-433.7	0.00	0.00	0.00
4,900.0	8.91	352.85	4,865.5	80.46	450.1	-56.5	-449.1	0.00	0.00	0.00
SHANNON										
4,945.0	8.91	352.85	4,910.0	36.00	457.1	-57.3	-456.0	0.00	0.00	0.00
5,000.0	8.91	352.85	4,964.3	-18.33	465.5	-58.4	-464.4	0.00	0.00	0.00
5,100.0	8.91	352.85	5,063.1	-117.12	480.9	-60.3	-479.7	0.00	0.00	0.00
5,200.0	8.91	352.85	5,161.9	-215.91	496.3	-62.2	-495.1	0.00	0.00	0.00
5,300.0	8.91	352.85	5,260.7	-314.71	511.6	-64.2	-510.4	0.00	0.00	0.00
5,400.0	8.91	352.85	5,359.5	-413.50	527.0	-66.1	-525.8	0.00	0.00	0.00
5,500.0	8.91	352.85	5,458.3	-512.29	542.4	-68.0	-541.1	0.00	0.00	0.00
5,600.0	8.91	352.85	5,557.1	-611.08	557.8	-70.0	-556.4	0.00	0.00	0.00
5,700.0	8.91	352.85	5,655.9	-709.87	573.1	-71.9	-571.8	0.00	0.00	0.00
5,800.0	8.91	352.85	5,754.7	-808.67	588.5	-73.8	-587.1	0.00	0.00	0.00
5,900.0	8.91	352.85	5,853.5	-907.46	603.9	-75.7	-602.4	0.00	0.00	0.00
6,000.0	8.91	352.85	5,952.3	-1,006.25	619.3	-77.7	-617.8	0.00	0.00	0.00
6,100.0	8.91	352.85	6,051.0	-1,105.04	634.6	-79.6	-633.1	0.00	0.00	0.00
6,200.0	8.91	352.85	6,149.8	-1,203.83	650.0	-81.5	-648.5	0.00	0.00	0.00
6,300.0	8.91	352.85	6,248.6	-1,302.63	665.4	-83.5	-663.8	0.00	0.00	0.00
6,400.0	8.91	352.85	6,347.4	-1,401.42	680.8	-85.4	-679.1	0.00	0.00	0.00
END OF TANGENT										
6,426.0	8.91	352.85	6,373.1	-1,427.07	684.8	-85.9	-683.1	0.00	0.00	0.00
6,500.0	7.43	352.85	6,446.4	-1,500.35	695.2	-87.2	-693.5	2.00	-2.00	0.00
6,600.0	5.43	352.85	6,545.7	-1,599.72	706.3	-88.6	-704.6	2.00	-2.00	0.00
6,700.0	3.43	352.85	6,645.4	-1,699.41	714.0	-89.6	-712.3	2.00	-2.00	0.00
6,800.0	1.43	352.85	6,745.3	-1,799.32	718.2	-90.1	-716.5	2.00	-2.00	0.00
EOD TO VERTICAL										
6,871.7	0.00	0.00	6,817.0	-1,871.00	719.1	-90.2	-717.4	2.00	-2.00	0.00
6,900.0	0.00	0.00	6,845.3	-1,899.31	719.1	-90.2	-717.4	0.00	0.00	0.00
KOP (10°/100ft BUR)										
6,901.7	0.00	0.00	6,847.0	-1,901.00	719.1	-90.2	-717.4	0.00	0.00	0.00
7,000.0	9.83	179.84	6,944.8	-1,998.83	710.7	-90.2	-709.0	10.00	10.00	0.00
7,100.0	19.83	179.84	7,041.4	-2,095.37	685.1	-90.1	-683.4	10.00	10.00	0.00
SHARON SPRINGS										
7,168.2	26.65	179.84	7,104.0	-2,158.00	658.2	-90.0	-656.5	10.00	10.00	0.00
7,200.0	29.83	179.84	7,132.0	-2,186.01	643.2	-90.0	-641.5	10.00	10.00	0.00
NIOBRARA										
7,202.3	30.06	179.84	7,134.0	-2,188.00	642.0	-90.0	-640.3	10.00	10.00	0.00
7,300.0	39.83	179.84	7,214.0	-2,268.00	586.1	-89.8	-584.5	10.00	10.00	0.00
7,400.0	49.83	179.84	7,284.8	-2,338.83	515.7	-89.6	-514.1	10.00	10.00	0.00
7,500.0	59.83	179.84	7,342.4	-2,396.36	434.1	-89.4	-432.4	10.00	10.00	0.00
7,600.0	69.83	179.84	7,384.8	-2,438.85	343.7	-89.2	-342.1	10.00	10.00	0.00
FT HAYS										
7,600.4	69.87	179.84	7,385.0	-2,439.00	343.3	-89.2	-341.6	10.00	10.00	0.00
CODELL										
7,694.6	79.28	179.84	7,410.0	-2,464.00	252.7	-88.9	-251.1	10.00	10.00	0.00
7,700.0	79.82	179.84	7,411.0	-2,464.99	247.3	-88.9	-245.7	10.00	10.00	0.00
7,800.0	89.82	179.84	7,420.0	-2,474.00	147.9	-88.6	-146.3	10.00	10.00	0.00
7" ICP - JOHNSON TRUST 9										
7,801.8	90.00	179.84	7,420.0	-2,474.00	146.1	-88.6	-144.5	10.00	10.00	0.00
7,900.0	90.00	179.84	7,420.0	-2,474.00	47.9	-88.4	-46.3	0.00	0.00	0.00
8,000.0	90.00	179.84	7,420.0	-2,474.00	-52.1	-88.1	53.7	0.00	0.00	0.00

Planning Report



Database:	EDM 5000.1 Single User Db	Local Co-ordinate Reference:	Well JOHNSON TRUST 9
Company:	EXTRACTION OIL & GAS	TVD Reference:	KB-EST @ 4946.0usft (Original Well Elev)
Project:	WELD COUNTY, COLORADO (NAD 83)	MD Reference:	KB-EST @ 4946.0usft (Original Well Elev)
Site:	NW SW SEC. 13 T2N R68W 6th P.M.	North Reference:	True
Well:	JOHNSON TRUST 9	Survey Calculation Method:	Minimum Curvature
Wellbore:	ORIGINAL WELLBORE		
Design:	PROPOSAL #1		

Planned Survey

MD (usft)	Inc (°)	Azi (°)	TVD (usft)	SS (usft)	+N/-S (usft)	+E/-W (usft)	Vertical Section (usft)	Dogleg Rate (°/100usft)	Build Rate (°/100usft)	Turn Rate (°/100usft)
8,100.0	90.00	179.84	7,420.0	-2,473.99	-152.1	-87.8	153.7	0.00	0.00	0.00
8,200.0	90.00	179.84	7,420.0	-2,473.99	-252.1	-87.5	253.7	0.00	0.00	0.00
8,300.0	90.00	179.84	7,420.0	-2,473.99	-352.1	-87.3	353.6	0.00	0.00	0.00
8,400.0	90.00	179.84	7,420.0	-2,473.99	-452.1	-87.0	453.6	0.00	0.00	0.00
8,500.0	90.00	179.84	7,420.0	-2,473.99	-552.1	-86.7	553.6	0.00	0.00	0.00
8,600.0	90.00	179.84	7,420.0	-2,473.99	-652.1	-86.4	653.6	0.00	0.00	0.00
8,700.0	90.00	179.84	7,420.0	-2,473.99	-752.1	-86.2	753.6	0.00	0.00	0.00
8,800.0	90.00	179.84	7,420.0	-2,473.98	-852.1	-85.9	853.5	0.00	0.00	0.00
8,900.0	90.00	179.84	7,420.0	-2,473.98	-952.1	-85.6	953.5	0.00	0.00	0.00
9,000.0	90.00	179.84	7,420.0	-2,473.98	-1,052.1	-85.3	1,053.5	0.00	0.00	0.00
9,100.0	90.00	179.84	7,420.0	-2,473.98	-1,152.1	-85.0	1,153.5	0.00	0.00	0.00
9,200.0	90.00	179.84	7,420.0	-2,473.98	-1,252.1	-84.8	1,253.4	0.00	0.00	0.00
9,300.0	90.00	179.84	7,420.0	-2,473.98	-1,352.1	-84.5	1,353.4	0.00	0.00	0.00
9,400.0	90.00	179.84	7,420.0	-2,473.98	-1,452.1	-84.2	1,453.4	0.00	0.00	0.00
9,500.0	90.00	179.84	7,420.0	-2,473.98	-1,552.1	-83.9	1,553.4	0.00	0.00	0.00
9,600.0	90.00	179.84	7,420.0	-2,473.98	-1,652.1	-83.6	1,653.4	0.00	0.00	0.00
9,700.0	90.00	179.84	7,420.0	-2,473.98	-1,752.1	-83.3	1,753.3	0.00	0.00	0.00
9,800.0	90.00	179.84	7,420.0	-2,473.98	-1,852.1	-83.1	1,853.3	0.00	0.00	0.00
9,900.0	90.00	179.84	7,420.0	-2,473.98	-1,952.1	-82.8	1,953.3	0.00	0.00	0.00
10,000.0	90.00	179.84	7,420.0	-2,473.98	-2,052.1	-82.5	2,053.3	0.00	0.00	0.00
10,100.0	90.00	179.84	7,420.0	-2,473.98	-2,152.1	-82.2	2,153.3	0.00	0.00	0.00
10,200.0	90.00	179.84	7,420.0	-2,473.98	-2,252.1	-81.9	2,253.2	0.00	0.00	0.00
10,300.0	90.00	179.84	7,420.0	-2,473.98	-2,352.1	-81.6	2,353.2	0.00	0.00	0.00
10,400.0	90.00	179.84	7,420.0	-2,473.98	-2,452.1	-81.3	2,453.2	0.00	0.00	0.00
10,500.0	90.00	179.84	7,420.0	-2,473.98	-2,552.1	-81.1	2,553.2	0.00	0.00	0.00
10,600.0	90.00	179.83	7,420.0	-2,473.98	-2,652.1	-80.8	2,653.1	0.00	0.00	0.00
10,700.0	90.00	179.83	7,420.0	-2,473.98	-2,752.1	-80.5	2,753.1	0.00	0.00	0.00
10,800.0	90.00	179.83	7,420.0	-2,473.98	-2,852.1	-80.2	2,853.1	0.00	0.00	0.00
10,900.0	90.00	179.83	7,420.0	-2,473.98	-2,952.1	-79.9	2,953.1	0.00	0.00	0.00
11,000.0	90.00	179.83	7,420.0	-2,473.98	-3,052.1	-79.6	3,053.1	0.00	0.00	0.00
11,100.0	90.00	179.83	7,420.0	-2,473.98	-3,152.1	-79.3	3,153.0	0.00	0.00	0.00
11,200.0	90.00	179.83	7,420.0	-2,473.98	-3,252.1	-79.0	3,253.0	0.00	0.00	0.00
11,300.0	90.00	179.83	7,420.0	-2,473.99	-3,352.1	-78.7	3,353.0	0.00	0.00	0.00
11,400.0	90.00	179.83	7,420.0	-2,473.99	-3,452.1	-78.4	3,453.0	0.00	0.00	0.00
11,500.0	90.00	179.83	7,420.0	-2,473.99	-3,552.1	-78.2	3,553.0	0.00	0.00	0.00
11,600.0	90.00	179.83	7,420.0	-2,473.99	-3,652.1	-77.9	3,652.9	0.00	0.00	0.00
11,700.0	90.00	179.83	7,420.0	-2,473.99	-3,752.1	-77.6	3,752.9	0.00	0.00	0.00
11,800.0	90.00	179.83	7,420.0	-2,473.99	-3,852.1	-77.3	3,852.9	0.00	0.00	0.00
11,900.0	90.00	179.83	7,420.0	-2,473.99	-3,952.1	-77.0	3,952.9	0.00	0.00	0.00
12,000.0	90.00	179.83	7,420.0	-2,474.00	-4,052.1	-76.7	4,052.8	0.00	0.00	0.00
12,100.0	90.00	179.83	7,420.0	-2,474.00	-4,152.1	-76.4	4,152.8	0.00	0.00	0.00
12,200.0	90.00	179.83	7,420.0	-2,474.00	-4,252.1	-76.1	4,252.8	0.00	0.00	0.00
BHL - JOHNSON TRUST 9										
12,208.7	90.00	179.83	7,420.0	-2,474.00	-4,260.8	-76.1	4,261.5	0.00	0.00	0.00

Database:	EDM 5000.1 Single User Db	Local Co-ordinate Reference:	Well JOHNSON TRUST 9
Company:	EXTRACTION OIL & GAS	TVD Reference:	KB-EST @ 4946.0usft (Original Well Elev)
Project:	WELD COUNTY, COLORADO (NAD 83)	MD Reference:	KB-EST @ 4946.0usft (Original Well Elev)
Site:	NW SW SEC. 13 T2N R68W 6th P.M.	North Reference:	True
Well:	JOHNSON TRUST 9	Survey Calculation Method:	Minimum Curvature
Wellbore:	ORIGINAL WELLBORE		
Design:	PROPOSAL #1		

Formations					
MD (usft)	TVD (usft)	Name	Lithology	Dip (°)	Dip Direction (°)
3,651.4	3,632.0	PARKMAN			
4,479.4	4,450.0	SUSSEX			
4,945.0	4,910.0	SHANNON			
7,168.2	7,104.0	SHARON SPRINGS			
7,202.3	7,134.0	NIOBRARA			
7,600.4	7,385.0	FT HAYS			
7,694.6	7,410.0	CODELL			

Plan Annotations				
MD (usft)	TVD (usft)	Local Coordinates		Comment
		+N/-S (usft)	+E/-W (usft)	
1,750.0	1,750.0	0.0	0.0	START NUDGE (2°/100ft BUR)
2,195.7	2,193.9	34.3	-4.3	EOB TO 8.91° INC
6,426.0	6,373.1	684.8	-85.9	END OF TANGENT
6,871.7	6,817.0	719.1	-90.2	EOD TO VERTICAL
6,901.7	6,847.0	719.1	-90.2	KOP (10°/100ft BUR)
7,801.8	7,420.0	146.1	-88.6	7" ICP - JOHNSON TRUST 9
12,208.7	7,420.0	-4,260.8	-76.1	BHL - JOHNSON TRUST 9