

EXTRACTION OIL & GAS

WELD COUNTY, COLORADO (NAD 83)

NW SW SEC. 13 T2N R68W 6th P.M.

JOHNSON TRUST 8

ORIGINAL WELLBORE

08 October, 2014

Plan: PROPOSAL #1





Project: WELD COUNTY, COLORADO (NAD 83)
Site: NW SW SEC. 13 T2N R68W 6th P.M.
Well: JOHNSON TRUST 8
Wellbore: ORIGINAL WELLBORE
Design: PROPOSAL #1

ANNOTATIONS								
TVD	MD	Inc	Azi	+N/-S	+E/-W	VSect	Dep	Annotation
1650.0	1650.0	0.00	0.00	0.0	0.0	0.0	0.0	START NUDGE (2°/100ft BUR)
2098.7	2100.5	9.01	17.32	33.8	10.5	-33.1	35.4	EOB TO 9.01° INC
6203.3	6256.5	9.01	17.32	655.1	204.3	-643.3	686.3	END OF TANGENT
6652.0	6707.0	0.00	0.00	688.9	214.8	-676.5	721.6	EOD TO VERTICAL
6682.0	6737.0	0.00	0.00	688.9	214.8	-676.5	721.6	KOP (10°/100ft BUR)
7255.0	7637.1	90.00	179.84	115.9	216.4	-104.2	1294.7	7" ICP - JOHNSON TRUST 8
7255.0	12042.2	90.00	179.84	-4289.2	228.8	4295.3	5699.7	BHL - JOHNSON TRUST 8

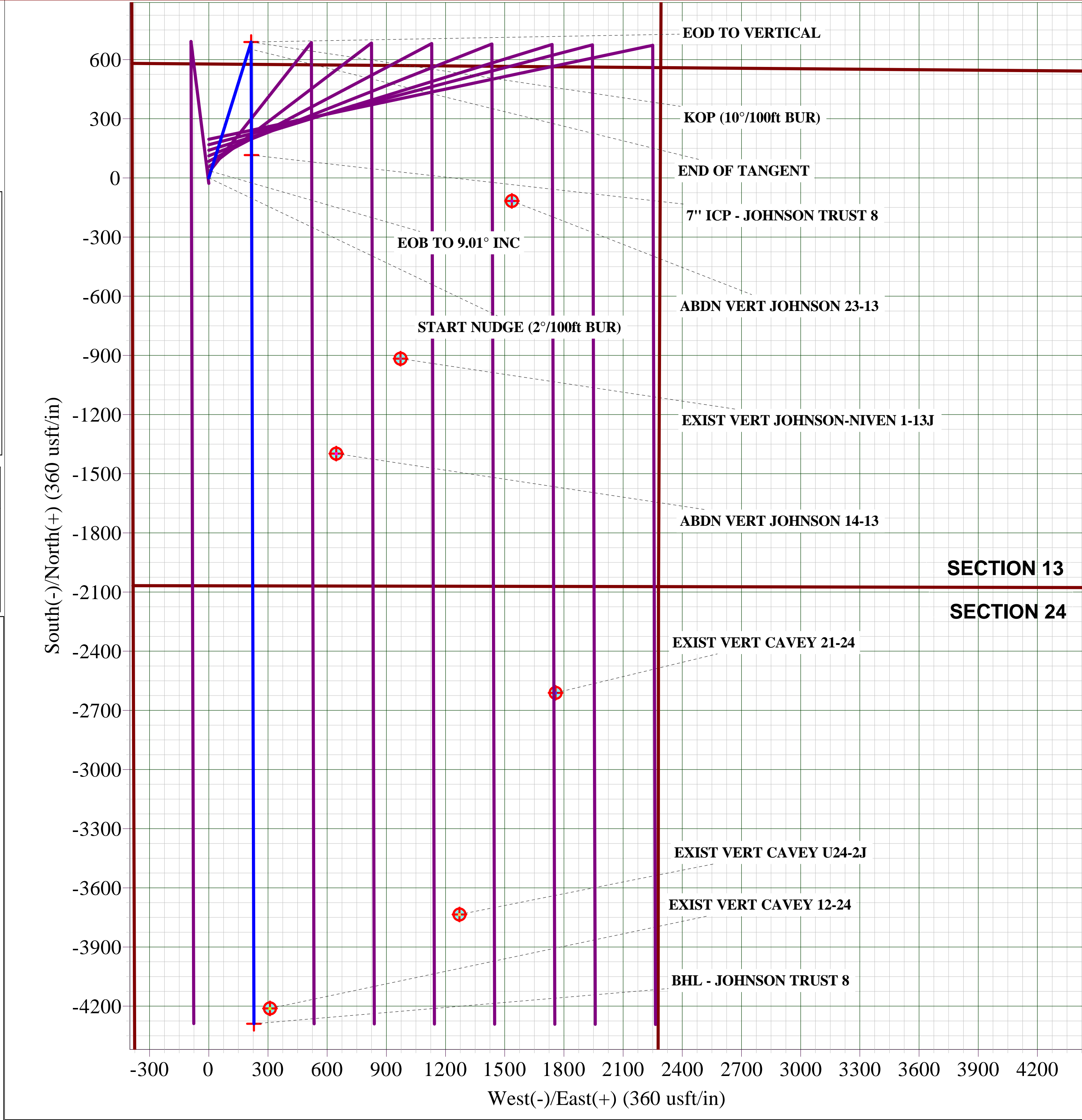
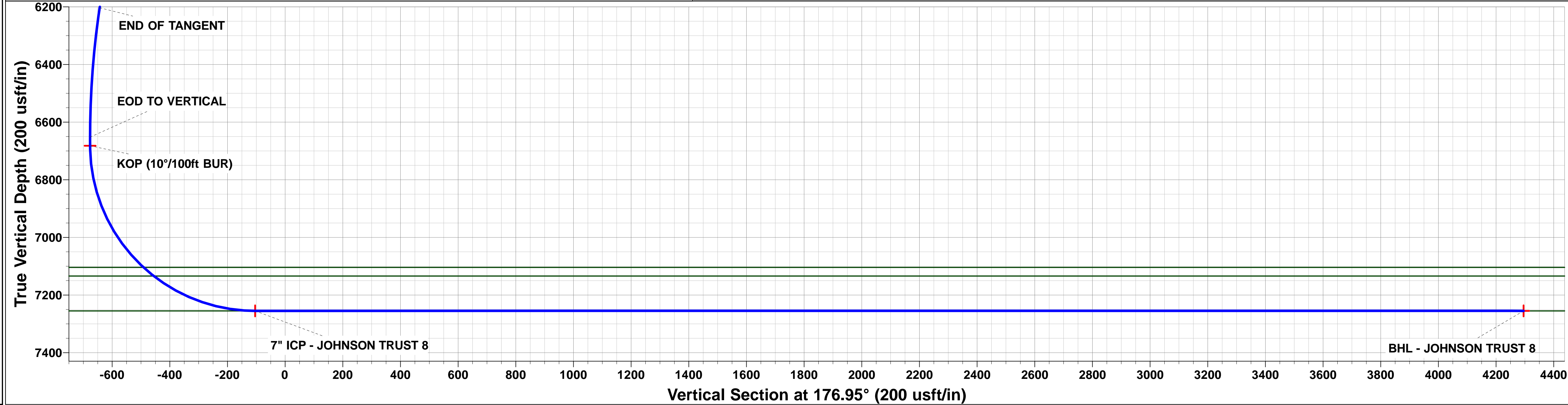
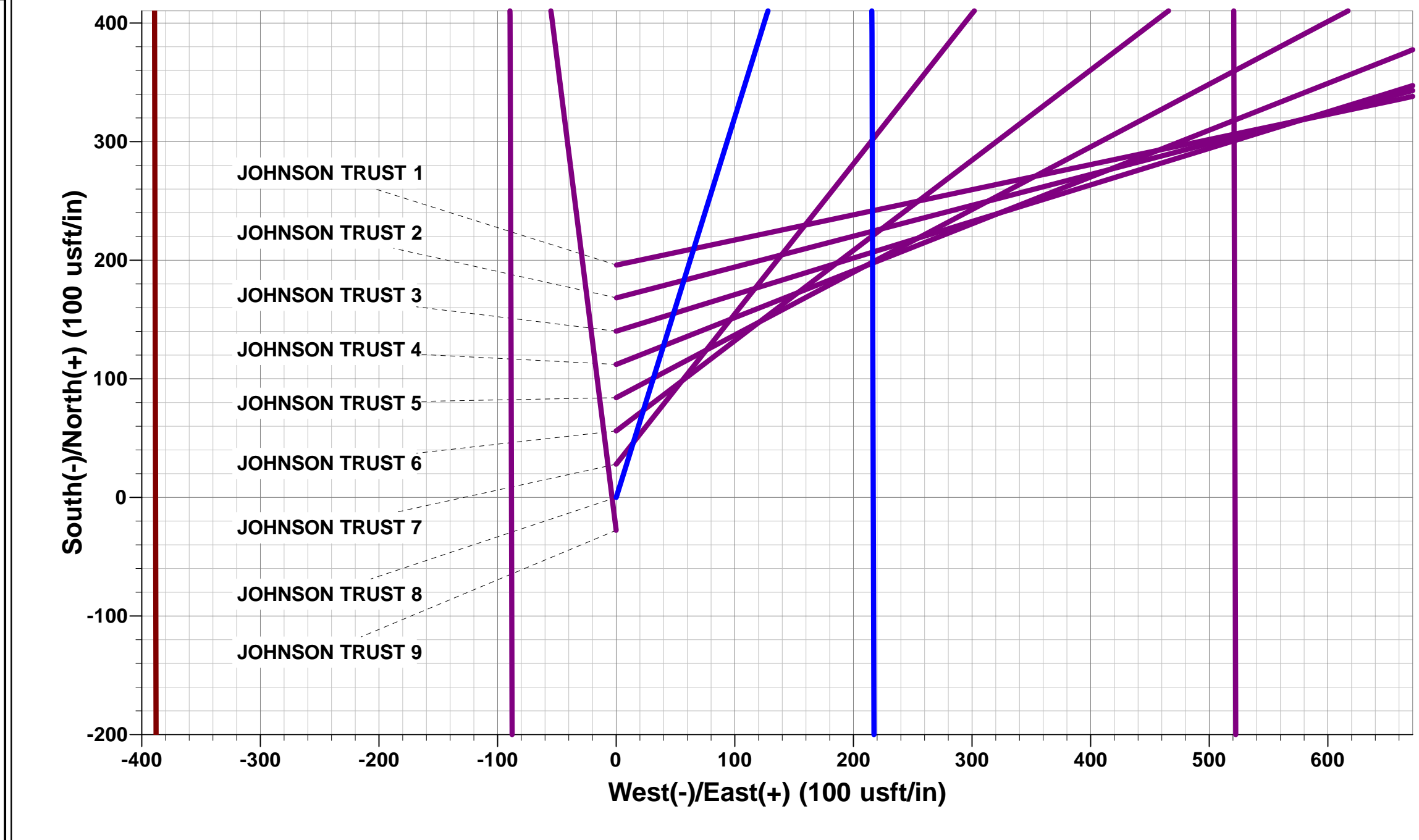
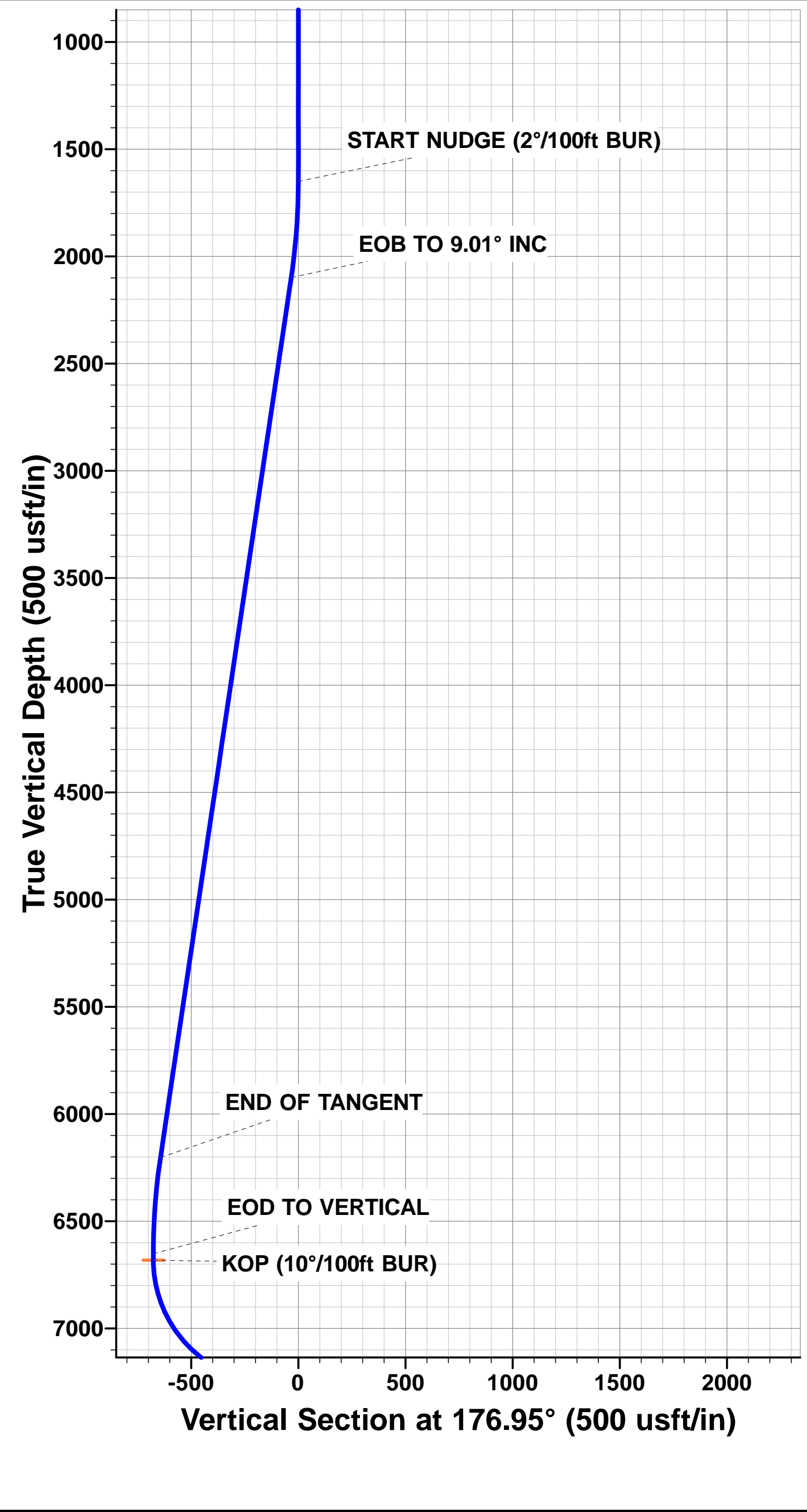
PROPOSED LOCAL COORDINATES:

SHL: 2069ft FSL & 388ft FWL Sec 13

7" ICP: 2185ft FSL & 605ft FWL Sec 13

BHL: 2220ft FNL & 605ft FWL Sec 24

WELLBORE TARGET DETAILS (LAT/LONG)					
Name	TVD	+N/-S	+E/-W	Latitude	Longitude
KOP - JOHNSON TRUST 8	6682.0	688.9	214.8	40.138999	-104.958852
7" ICP - JOHNSON TRUST 8	7255.0	115.9	216.4	40.137426	-104.958846
BHL - JOHNSON TRUST 8	7255.0	-4289.2	228.8	40.125334	-104.958802



Planning Report



Database:	EDM 5000.1 Single User Db	Local Co-ordinate Reference:	Well JOHNSON TRUST 8
Company:	EXTRACTION OIL & GAS	TVD Reference:	KB-EST @ 4947.0usft (Original Well Elev)
Project:	WELD COUNTY, COLORADO (NAD 83)	MD Reference:	KB-EST @ 4947.0usft (Original Well Elev)
Site:	NW SW SEC. 13 T2N R68W 6th P.M.	North Reference:	True
Well:	JOHNSON TRUST 8	Survey Calculation Method:	Minimum Curvature
Wellbore:	ORIGINAL WELLBORE		
Design:	PROPOSAL #1		

Project	WELD COUNTY, COLORADO (NAD 83)		
Map System:	US State Plane 1983	System Datum:	Mean Sea Level
Geo Datum:	North American Datum 1983		
Map Zone:	Colorado Northern Zone		Using geodetic scale factor

Site	NW SW SEC. 13 T2N R68W 6th P.M.		
Site Position:		Northing:	1,293,448.40 usft
From:	Lat/Long	Easting:	3,151,083.18 usft
Position Uncertainty:	0.0 usft	Slot Radius:	1.10000ft
		Latitude:	40.137646
		Longitude:	-104.959619
		Grid Convergence:	0.35 °

Well	JOHNSON TRUST 8		
Well Position	+N-S	-196.0 usft	Northing:
	+E-W	-0.3 usft	Easting:
Position Uncertainty		0.0 usft	Wellhead Elevation:
			usft
			Latitude:
			Longitude:
			Ground Level:

Wellbore	ORIGINAL WELLBORE				
Magnetics	Model Name	Sample Date	Declination (°)	Dip Angle (°)	Field Strength (nT)
	IGRF2010	08/10/2014	8.50	66.69	52,623

Design	PROPOSAL #1			
Audit Notes:				
Version:	Phase:	PROTOTYPE	Tie On Depth:	0.0
Vertical Section:	Depth From (TVD) (usft)	+N-S (usft)	+E-W (usft)	Direction (°)
	7,255.0	0.0	0.0	176.95

Plan Sections											
MD (usft)	Inc (°)	Azi (°)	Vertical Depth	SS (usft)	+N-S (usft)	+E-W (usft)	Dogleg Rate (°/100usft)	Build Rate (°/100usft)	Turn Rate (°/100usft)	TFO (°)	Target
0.0	0.00	0.00	0.0	-4,947.0	0.0	0.0	0.00	0.00	0.00	0.00	
1,650.0	0.00	0.00	1,650.0	-3,297.0	0.0	0.0	0.00	0.00	0.00	0.00	
2,100.5	9.01	17.32	2,098.7	-2,848.3	33.8	10.5	2.00	2.00	0.00	17.32	
6,256.5	9.01	17.32	6,203.3	1,256.3	655.1	204.3	0.00	0.00	0.00	0.00	
6,707.0	0.00	0.00	6,652.0	1,705.0	688.9	214.8	2.00	-2.00	0.00	180.00	
6,737.0	0.00	0.00	6,682.0	1,735.0	688.9	214.8	0.00	0.00	0.00	0.00	KOP - JOHNSON T
7,637.1	90.00	179.84	7,255.0	2,308.0	115.9	216.4	10.00	10.00	19.98	179.84	7" ICP - JOHNSON
12,042.2	90.00	179.84	7,255.0	2,308.0	-4,289.2	228.8	0.00	0.00	0.00	173.78	BHL - JOHNSON T

Planning Report



Database:	EDM 5000.1 Single User Db	Local Co-ordinate Reference:	Well JOHNSON TRUST 8
Company:	EXTRACTION OIL & GAS	TVD Reference:	KB-EST @ 4947.0usft (Original Well Elev)
Project:	WELD COUNTY, COLORADO (NAD 83)	MD Reference:	KB-EST @ 4947.0usft (Original Well Elev)
Site:	NW SW SEC. 13 T2N R6W 6th P.M.	North Reference:	True
Well:	JOHNSON TRUST 8	Survey Calculation Method:	Minimum Curvature
Wellbore:	ORIGINAL WELLBORE		
Design:	PROPOSAL #1		

Planned Survey

MD (usft)	Inc (°)	Azi (°)	TVD (usft)	SS (usft)	+N/-S (usft)	+E/-W (usft)	Vertical Section (usft)	Dogleg Rate (°/100usft)	Build Rate (°/100usft)	Turn Rate (°/100usft)
0.0	0.00	0.00	0.0	4,947.00	0.0	0.0	0.0	0.00	0.00	0.00
100.0	0.00	0.00	100.0	4,847.00	0.0	0.0	0.0	0.00	0.00	0.00
200.0	0.00	0.00	200.0	4,747.00	0.0	0.0	0.0	0.00	0.00	0.00
300.0	0.00	0.00	300.0	4,647.00	0.0	0.0	0.0	0.00	0.00	0.00
400.0	0.00	0.00	400.0	4,547.00	0.0	0.0	0.0	0.00	0.00	0.00
500.0	0.00	0.00	500.0	4,447.00	0.0	0.0	0.0	0.00	0.00	0.00
600.0	0.00	0.00	600.0	4,347.00	0.0	0.0	0.0	0.00	0.00	0.00
700.0	0.00	0.00	700.0	4,247.00	0.0	0.0	0.0	0.00	0.00	0.00
800.0	0.00	0.00	800.0	4,147.00	0.0	0.0	0.0	0.00	0.00	0.00
900.0	0.00	0.00	900.0	4,047.00	0.0	0.0	0.0	0.00	0.00	0.00
1,000.0	0.00	0.00	1,000.0	3,947.00	0.0	0.0	0.0	0.00	0.00	0.00
1,100.0	0.00	0.00	1,100.0	3,847.00	0.0	0.0	0.0	0.00	0.00	0.00
1,200.0	0.00	0.00	1,200.0	3,747.00	0.0	0.0	0.0	0.00	0.00	0.00
1,300.0	0.00	0.00	1,300.0	3,647.00	0.0	0.0	0.0	0.00	0.00	0.00
1,400.0	0.00	0.00	1,400.0	3,547.00	0.0	0.0	0.0	0.00	0.00	0.00
1,500.0	0.00	0.00	1,500.0	3,447.00	0.0	0.0	0.0	0.00	0.00	0.00
1,600.0	0.00	0.00	1,600.0	3,347.00	0.0	0.0	0.0	0.00	0.00	0.00
START NUDGE (2°/100ft BUR)										
1,650.0	0.00	0.00	1,650.0	3,297.00	0.0	0.0	0.0	0.00	0.00	0.00
1,700.0	1.00	17.32	1,700.0	3,247.00	0.4	0.1	-0.4	2.00	2.00	0.00
1,800.0	3.00	17.32	1,799.9	3,147.07	3.7	1.2	-3.7	2.00	2.00	0.00
1,900.0	5.00	17.32	1,899.7	3,047.32	10.4	3.2	-10.2	2.00	2.00	0.00
2,000.0	7.00	17.32	1,999.1	2,947.87	20.4	6.4	-20.0	2.00	2.00	0.00
2,100.0	9.00	17.32	2,098.2	2,848.85	33.7	10.5	-33.1	2.00	2.00	0.00
EOB TO 9.01° INC										
2,100.5	9.01	17.32	2,098.7	2,848.32	33.8	10.5	-33.1	2.00	2.00	0.00
2,200.0	9.01	17.32	2,196.9	2,750.08	48.6	15.2	-47.7	0.00	0.00	0.00
2,300.0	9.01	17.32	2,295.7	2,651.32	63.6	19.8	-62.4	0.00	0.00	0.00
2,400.0	9.01	17.32	2,394.4	2,552.55	78.5	24.5	-77.1	0.00	0.00	0.00
2,500.0	9.01	17.32	2,493.2	2,453.78	93.5	29.1	-91.8	0.00	0.00	0.00
2,600.0	9.01	17.32	2,592.0	2,355.02	108.4	33.8	-106.5	0.00	0.00	0.00
2,700.0	9.01	17.32	2,690.7	2,256.25	123.4	38.5	-121.2	0.00	0.00	0.00
2,800.0	9.01	17.32	2,789.5	2,157.49	138.3	43.1	-135.8	0.00	0.00	0.00
2,900.0	9.01	17.32	2,888.3	2,058.72	153.3	47.8	-150.5	0.00	0.00	0.00
3,000.0	9.01	17.32	2,987.0	1,959.96	168.2	52.5	-165.2	0.00	0.00	0.00
3,100.0	9.01	17.32	3,085.8	1,861.19	183.2	57.1	-179.9	0.00	0.00	0.00
3,200.0	9.01	17.32	3,184.6	1,762.42	198.1	61.8	-194.6	0.00	0.00	0.00
3,300.0	9.01	17.32	3,283.3	1,663.66	213.1	66.4	-209.3	0.00	0.00	0.00
3,400.0	9.01	17.32	3,382.1	1,564.89	228.0	71.1	-223.9	0.00	0.00	0.00
3,500.0	9.01	17.32	3,480.9	1,466.13	243.0	75.8	-238.6	0.00	0.00	0.00
3,600.0	9.01	17.32	3,579.6	1,367.36	258.0	80.4	-253.3	0.00	0.00	0.00
PARKMAN										
3,653.0	9.01	17.32	3,632.0	1,315.00	265.9	82.9	-261.1	0.00	0.00	0.00
3,700.0	9.01	17.32	3,678.4	1,268.59	272.9	85.1	-268.0	0.00	0.00	0.00
3,800.0	9.01	17.32	3,777.2	1,169.83	287.9	89.8	-282.7	0.00	0.00	0.00
3,900.0	9.01	17.32	3,875.9	1,071.06	302.8	94.4	-297.4	0.00	0.00	0.00
4,000.0	9.01	17.32	3,974.7	972.30	317.8	99.1	-312.0	0.00	0.00	0.00
4,100.0	9.01	17.32	4,073.5	873.53	332.7	103.7	-326.7	0.00	0.00	0.00
4,200.0	9.01	17.32	4,172.2	774.76	347.7	108.4	-341.4	0.00	0.00	0.00
4,300.0	9.01	17.32	4,271.0	676.00	362.6	113.1	-356.1	0.00	0.00	0.00
4,400.0	9.01	17.32	4,369.8	577.23	377.6	117.7	-370.8	0.00	0.00	0.00
SUSSEX										
4,481.2	9.01	17.32	4,450.0	497.00	389.7	121.5	-382.7	0.00	0.00	0.00
4,500.0	9.01	17.32	4,468.5	478.47	392.5	122.4	-385.4	0.00	0.00	0.00

Database:	EDM 5000.1 Single User Db	Local Co-ordinate Reference:	Well JOHNSON TRUST 8
Company:	EXTRACTION OIL & GAS	TVD Reference:	KB-EST @ 4947.0usft (Original Well Elev)
Project:	WELD COUNTY, COLORADO (NAD 83)	MD Reference:	KB-EST @ 4947.0usft (Original Well Elev)
Site:	NW SW SEC. 13 T2N R68W 6th P.M.	North Reference:	True
Well:	JOHNSON TRUST 8	Survey Calculation Method:	Minimum Curvature
Wellbore:	ORIGINAL WELLBORE		
Design:	PROPOSAL #1		

Planned Survey

MD (usft)	Inc (°)	Azi (°)	TVD (usft)	SS (usft)	+N/-S (usft)	+E/-W (usft)	Vertical Section (usft)	Dogleg Rate (°/100usft)	Build Rate (°/100usft)	Turn Rate (°/100usft)
4,600.0	9.01	17.32	4,567.3	379.70	407.5	127.1	-400.1	0.00	0.00	0.00
4,700.0	9.01	17.32	4,666.1	280.94	422.4	131.7	-414.8	0.00	0.00	0.00
4,800.0	9.01	17.32	4,764.8	182.17	437.4	136.4	-429.5	0.00	0.00	0.00
4,900.0	9.01	17.32	4,863.6	83.40	452.3	141.0	-444.2	0.00	0.00	0.00
SHANNON										
4,947.0	9.01	17.32	4,910.0	37.00	459.4	143.2	-451.1	0.00	0.00	0.00
5,000.0	9.01	17.32	4,962.4	-15.36	467.3	145.7	-458.9	0.00	0.00	0.00
5,100.0	9.01	17.32	5,061.1	-114.13	482.2	150.4	-473.5	0.00	0.00	0.00
5,200.0	9.01	17.32	5,159.9	-212.89	497.2	155.0	-488.2	0.00	0.00	0.00
5,300.0	9.01	17.32	5,258.7	-311.66	512.1	159.7	-502.9	0.00	0.00	0.00
5,400.0	9.01	17.32	5,357.4	-410.43	527.1	164.3	-517.6	0.00	0.00	0.00
5,500.0	9.01	17.32	5,456.2	-509.19	542.0	169.0	-532.3	0.00	0.00	0.00
5,600.0	9.01	17.32	5,555.0	-607.96	557.0	173.7	-547.0	0.00	0.00	0.00
5,700.0	9.01	17.32	5,653.7	-706.72	571.9	178.3	-561.6	0.00	0.00	0.00
5,800.0	9.01	17.32	5,752.5	-805.49	586.9	183.0	-576.3	0.00	0.00	0.00
5,900.0	9.01	17.32	5,851.3	-904.26	601.8	187.7	-591.0	0.00	0.00	0.00
6,000.0	9.01	17.32	5,950.0	-1,003.02	616.8	192.3	-605.7	0.00	0.00	0.00
6,100.0	9.01	17.32	6,048.8	-1,101.79	631.8	197.0	-620.4	0.00	0.00	0.00
6,200.0	9.01	17.32	6,147.6	-1,200.55	646.7	201.6	-635.0	0.00	0.00	0.00
END OF TANGENT										
6,256.5	9.01	17.32	6,203.3	-1,256.32	655.1	204.3	-643.3	0.00	0.00	0.00
6,300.0	8.14	17.32	6,246.4	-1,299.37	661.3	206.2	-649.4	2.00	-2.00	0.00
6,400.0	6.14	17.32	6,345.6	-1,398.59	673.2	209.9	-661.1	2.00	-2.00	0.00
6,500.0	4.14	17.32	6,445.2	-1,498.18	681.8	212.6	-669.5	2.00	-2.00	0.00
6,600.0	2.14	17.32	6,545.0	-1,598.03	687.0	214.2	-674.6	2.00	-2.00	0.00
6,700.0	0.14	17.32	6,645.0	-1,698.00	688.9	214.8	-676.5	2.00	-2.00	0.00
EOD TO VERTICAL										
6,707.0	0.00	0.00	6,652.0	-1,705.00	688.9	214.8	-676.5	2.00	-2.00	0.00
KOP (10°/100ft BUR)										
6,737.0	0.00	0.00	6,682.0	-1,735.00	688.9	214.8	-676.5	0.00	0.00	0.00
6,800.0	6.30	179.84	6,744.9	-1,797.87	685.4	214.8	-673.0	10.00	10.00	0.00
6,900.0	16.30	179.84	6,842.8	-1,895.81	665.9	214.9	-653.5	10.00	10.00	0.00
7,000.0	26.30	179.84	6,935.9	-1,988.86	629.6	215.0	-617.3	10.00	10.00	0.00
7,100.0	36.30	179.84	7,021.2	-2,074.20	577.7	215.1	-565.4	10.00	10.00	0.00
7,200.0	46.30	179.84	7,096.2	-2,149.24	511.8	215.3	-499.6	10.00	10.00	0.00
SHARON SPRINGS										
7,211.4	47.43	179.84	7,104.0	-2,157.00	503.5	215.3	-491.3	10.00	10.00	0.00
NIOBRARA										
7,257.8	52.08	179.84	7,134.0	-2,187.00	468.1	215.4	-455.9	10.00	10.00	0.00
7,300.0	56.30	179.84	7,158.7	-2,211.69	433.9	215.5	-421.8	10.00	10.00	0.00
7,400.0	66.30	179.84	7,206.7	-2,259.66	346.3	215.8	-334.3	10.00	10.00	0.00
7,500.0	76.29	179.84	7,238.7	-2,291.68	251.7	216.0	-239.8	10.00	10.00	0.00
7,600.0	86.29	179.84	7,253.8	-2,306.80	152.9	216.3	-141.2	10.00	10.00	0.00
7" ICP - JOHNSON TRUST 8 - NIO B TARGET										
7,637.1	90.00	179.84	7,255.0	-2,308.00	115.9	216.4	-104.2	10.00	10.00	0.00
7,700.0	90.00	179.84	7,255.0	-2,307.99	53.0	216.6	-41.4	0.00	0.00	0.00
7,800.0	90.00	179.84	7,255.0	-2,307.99	-47.0	216.9	58.5	0.00	0.00	0.00
7,900.0	90.00	179.84	7,255.0	-2,307.98	-147.0	217.1	158.4	0.00	0.00	0.00
8,000.0	90.00	179.84	7,255.0	-2,307.97	-247.0	217.4	258.3	0.00	0.00	0.00
8,100.0	90.00	179.84	7,255.0	-2,307.97	-347.0	217.7	358.1	0.00	0.00	0.00
8,200.0	90.00	179.84	7,255.0	-2,307.96	-447.0	218.0	458.0	0.00	0.00	0.00
8,300.0	90.00	179.84	7,255.0	-2,307.95	-547.0	218.3	557.9	0.00	0.00	0.00
8,400.0	90.00	179.84	7,254.9	-2,307.95	-647.0	218.6	657.8	0.00	0.00	0.00

Database:	EDM 5000.1 Single User Db	Local Co-ordinate Reference:	Well JOHNSON TRUST 8
Company:	EXTRACTION OIL & GAS	TVD Reference:	KB-EST @ 4947.0usft (Original Well Elev)
Project:	WELD COUNTY, COLORADO (NAD 83)	MD Reference:	KB-EST @ 4947.0usft (Original Well Elev)
Site:	NW SW SEC. 13 T2N R68W 6th P.M.	North Reference:	True
Well:	JOHNSON TRUST 8	Survey Calculation Method:	Minimum Curvature
Wellbore:	ORIGINAL WELLBORE		
Design:	PROPOSAL #1		

Planned Survey

MD (usft)	Inc (°)	Azi (°)	TVD (usft)	SS (usft)	+N/-S (usft)	+E/-W (usft)	Vertical Section (usft)	Dogleg Rate (°/100usft)	Build Rate (°/100usft)	Turn Rate (°/100usft)
8,500.0	90.00	179.84	7,254.9	-2,307.94	-747.0	218.8	757.6	0.00	0.00	0.00
8,600.0	90.00	179.84	7,254.9	-2,307.94	-847.0	219.1	857.5	0.00	0.00	0.00
8,700.0	90.00	179.84	7,254.9	-2,307.93	-947.0	219.4	957.4	0.00	0.00	0.00
8,800.0	90.00	179.84	7,254.9	-2,307.93	-1,047.0	219.7	1,057.2	0.00	0.00	0.00
8,900.0	90.00	179.84	7,254.9	-2,307.93	-1,147.0	220.0	1,157.1	0.00	0.00	0.00
9,000.0	90.00	179.84	7,254.9	-2,307.92	-1,247.0	220.2	1,257.0	0.00	0.00	0.00
9,100.0	90.00	179.84	7,254.9	-2,307.92	-1,347.0	220.5	1,356.9	0.00	0.00	0.00
9,200.0	90.00	179.84	7,254.9	-2,307.92	-1,447.0	220.8	1,456.7	0.00	0.00	0.00
9,300.0	90.00	179.84	7,254.9	-2,307.91	-1,547.0	221.1	1,556.6	0.00	0.00	0.00
9,400.0	90.00	179.84	7,254.9	-2,307.91	-1,647.0	221.4	1,656.5	0.00	0.00	0.00
9,500.0	90.00	179.84	7,254.9	-2,307.91	-1,747.0	221.6	1,756.4	0.00	0.00	0.00
9,600.0	90.00	179.84	7,254.9	-2,307.91	-1,847.0	221.9	1,856.2	0.00	0.00	0.00
9,700.0	90.00	179.84	7,254.9	-2,307.91	-1,947.0	222.2	1,956.1	0.00	0.00	0.00
9,800.0	90.00	179.84	7,254.9	-2,307.91	-2,047.0	222.5	2,056.0	0.00	0.00	0.00
9,900.0	90.00	179.84	7,254.9	-2,307.91	-2,147.0	222.8	2,155.8	0.00	0.00	0.00
10,000.0	90.00	179.84	7,254.9	-2,307.91	-2,247.0	223.0	2,255.7	0.00	0.00	0.00
10,100.0	90.00	179.84	7,254.9	-2,307.91	-2,347.0	223.3	2,355.6	0.00	0.00	0.00
10,200.0	90.00	179.84	7,254.9	-2,307.91	-2,447.0	223.6	2,455.5	0.00	0.00	0.00
10,300.0	90.00	179.84	7,254.9	-2,307.91	-2,547.0	223.9	2,555.3	0.00	0.00	0.00
10,400.0	90.00	179.84	7,254.9	-2,307.92	-2,647.0	224.2	2,655.2	0.00	0.00	0.00
10,500.0	90.00	179.84	7,254.9	-2,307.92	-2,747.0	224.4	2,755.1	0.00	0.00	0.00
10,600.0	90.00	179.84	7,254.9	-2,307.92	-2,847.0	224.7	2,854.9	0.00	0.00	0.00
10,700.0	90.00	179.84	7,254.9	-2,307.92	-2,947.0	225.0	2,954.8	0.00	0.00	0.00
10,800.0	90.00	179.84	7,254.9	-2,307.93	-3,047.0	225.3	3,054.7	0.00	0.00	0.00
10,900.0	90.00	179.84	7,254.9	-2,307.93	-3,147.0	225.6	3,154.6	0.00	0.00	0.00
11,000.0	90.00	179.84	7,254.9	-2,307.93	-3,247.0	225.8	3,254.4	0.00	0.00	0.00
11,100.0	90.00	179.84	7,254.9	-2,307.94	-3,347.0	226.1	3,354.3	0.00	0.00	0.00
11,200.0	90.00	179.84	7,254.9	-2,307.94	-3,447.0	226.4	3,454.2	0.00	0.00	0.00
11,300.0	90.00	179.84	7,254.9	-2,307.95	-3,547.0	226.7	3,554.1	0.00	0.00	0.00
11,400.0	90.00	179.84	7,255.0	-2,307.95	-3,647.0	227.0	3,653.9	0.00	0.00	0.00
11,500.0	90.00	179.84	7,255.0	-2,307.96	-3,747.0	227.2	3,753.8	0.00	0.00	0.00
11,600.0	90.00	179.84	7,255.0	-2,307.97	-3,847.0	227.5	3,853.7	0.00	0.00	0.00
11,700.0	90.00	179.84	7,255.0	-2,307.97	-3,947.0	227.8	3,953.5	0.00	0.00	0.00
11,800.0	90.00	179.84	7,255.0	-2,307.98	-4,047.0	228.1	4,053.4	0.00	0.00	0.00
11,900.0	90.00	179.84	7,255.0	-2,307.99	-4,147.0	228.4	4,153.3	0.00	0.00	0.00
12,000.0	90.00	179.84	7,255.0	-2,308.00	-4,247.0	228.6	4,253.2	0.00	0.00	0.00
BHL - JOHNSON TRUST 8										
12,042.2	90.00	179.84	7,255.0	-2,308.00	-4,289.2	228.8	4,295.3	0.00	0.00	0.00

Formations

MD (usft)	TVD (usft)	Name	Lithology	Dip (°)	Dip Direction (°)
3,653.0	3,632.0	PARKMAN			
4,481.2	4,450.0	SUSSEX			
4,947.0	4,910.0	SHANNON			
7,211.4	7,104.0	SHARON SPRINGS			
7,257.8	7,134.0	NIOBRARA			
7,637.1	7,255.0	NIO B TARGET			

Database:	EDM 5000.1 Single User Db	Local Co-ordinate Reference:	Well JOHNSON TRUST 8
Company:	EXTRACTION OIL & GAS	TVD Reference:	KB-EST @ 4947.0usft (Original Well Elev)
Project:	WELD COUNTY, COLORADO (NAD 83)	MD Reference:	KB-EST @ 4947.0usft (Original Well Elev)
Site:	NW SW SEC. 13 T2N R68W 6th P.M.	North Reference:	True
Well:	JOHNSON TRUST 8	Survey Calculation Method:	Minimum Curvature
Wellbore:	ORIGINAL WELLBORE		
Design:	PROPOSAL #1		

Plan Annotations

MD (usft)	TVD (usft)	Local Coordinates		Comment
		+N/-S (usft)	+E/-W (usft)	
1,650.0	1,650.0	0.0	0.0	START NUDGE (2°/100ft BUR)
2,100.5	2,098.7	33.8	10.5	EOB TO 9.01° INC
6,256.5	6,203.3	655.1	204.3	END OF TANGENT
6,707.0	6,652.0	688.9	214.8	EOD TO VERTICAL
6,737.0	6,682.0	688.9	214.8	KOP (10°/100ft BUR)
7,637.1	7,255.0	115.9	216.4	7" ICP - JOHNSON TRUST 8
12,042.2	7,255.0	-4,289.2	228.8	BHL - JOHNSON TRUST 8