

EXTRACTION OIL & GAS

WELD COUNTY, COLORADO (NAD 83)

NW SW SEC. 13 T2N R68W 6th P.M.

JOHNSON TRUST 6

ORIGINAL WELLBORE

08 October, 2014

Plan: PROPOSAL #1





Project: WELD COUNTY, COLORADO (NAD 83)
Site: NW SW SEC. 13 T2N R68W 6th P.M.
Well: JOHNSON TRUST 6
Wellbore: ORIGINAL WELLBORE
Design: PROPOSAL #1

ANNOTATIONS								
TVD	MD	Inc	Azi	+N/-S	+E/-W	VSect	Dep	Annotation
1450.0	1450.0	0.00	0.00	0.0	0.0	0.0	0.0	START NUDGE (2°/100ft BUR)
2085.2	2090.5	12.81	52.73	43.2	56.7	-31.6	71.3	EOB TO 12.81° INC
6016.8	6122.5	12.81	52.73	584.5	768.2	-428.3	965.3	END OF TANGENT
6652.0	6763.0	0.00	0.00	627.7	824.9	-460.0	1036.6	EOD TO VERTICAL
6682.0	6793.0	0.00	0.00	627.7	824.9	-460.0	1036.6	KOP (10°/100ft BUR)
7255.0	7693.1	90.00	179.84	54.7	826.5	103.0	1609.6	7" ICP - JOHNSON TRUST 6
7255.0	12094.2	90.00	179.84	-4346.4	839.0	4426.6	6010.7	BHL - JOHNSON TRUST 6

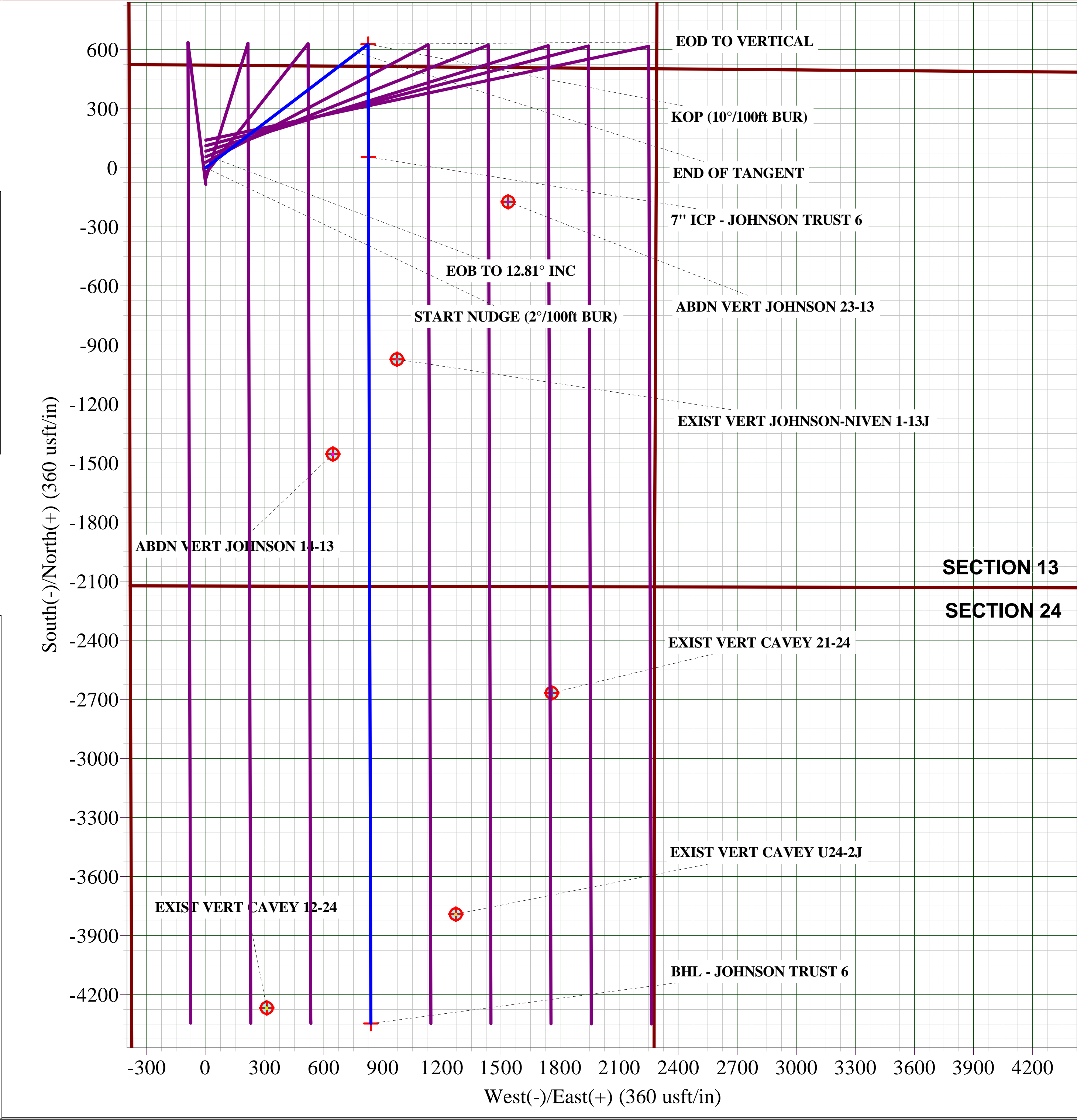
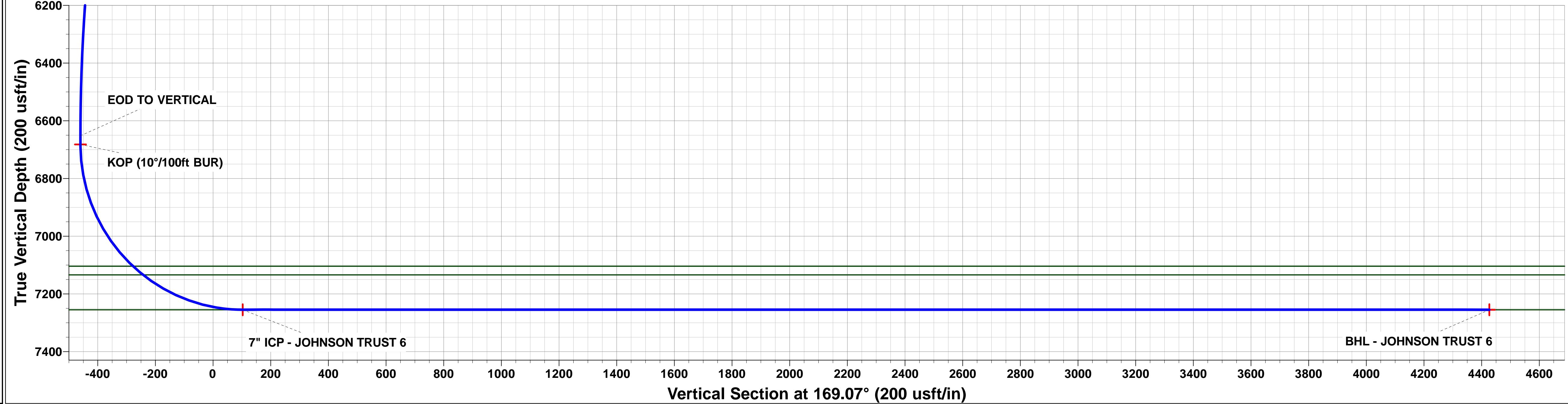
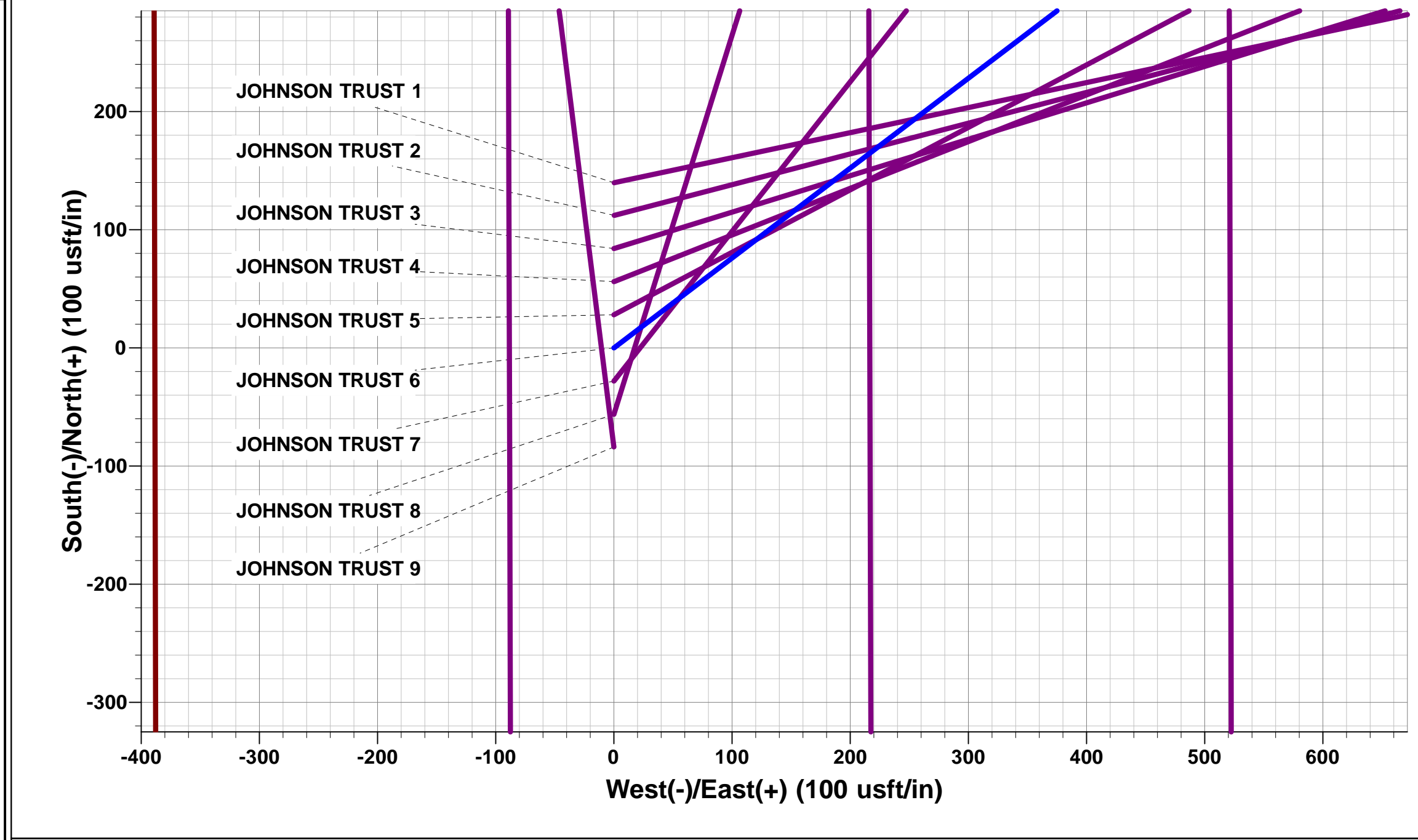
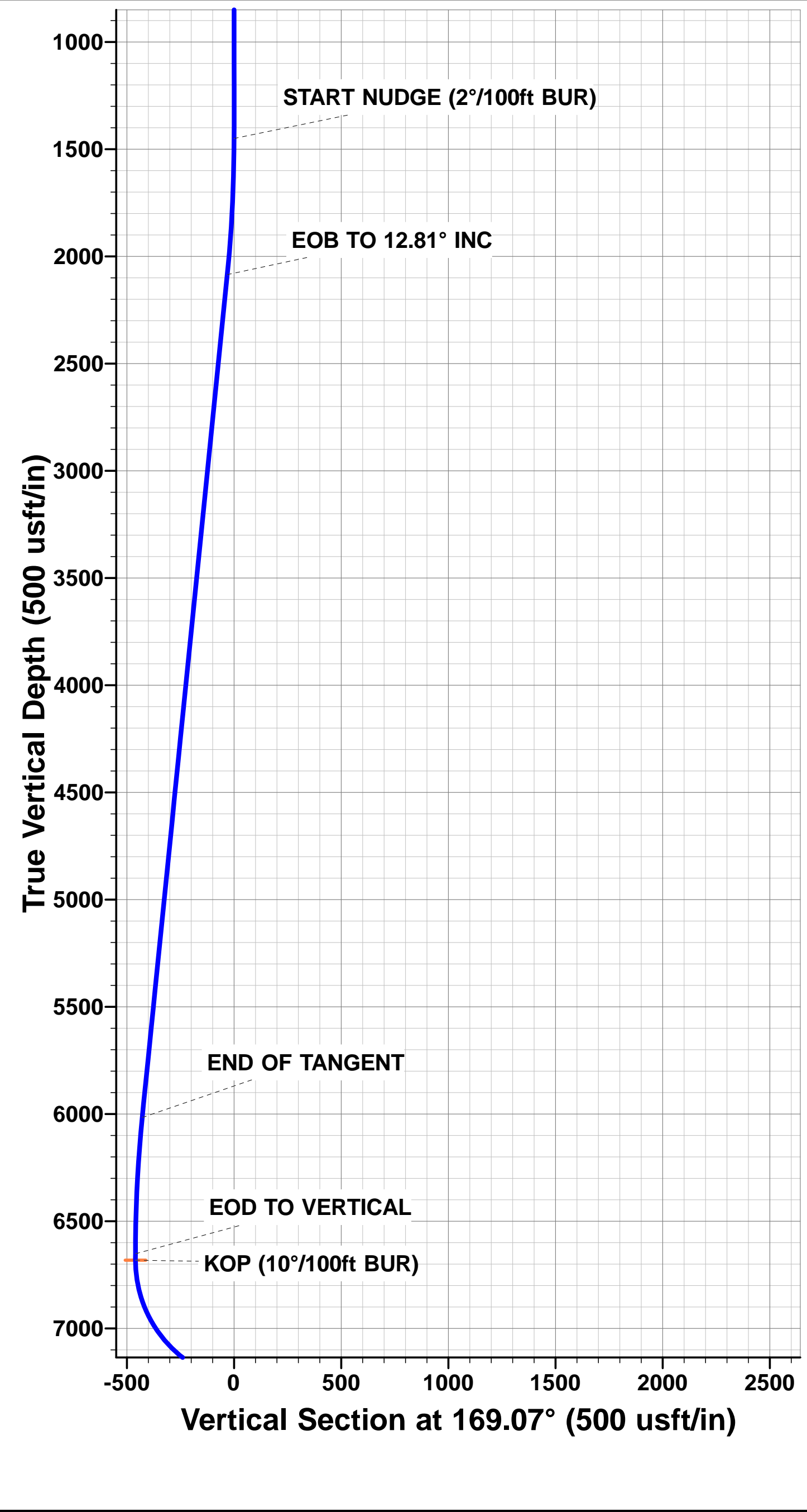
PROPOSED LOCAL COORDINATES:

SHL: 2125ft FSL & 388ft FWL Sec 13

7" ICP: 2181ft FSL & 1215ft FWL Sec 13

BHL: 2220ft FNL & 1215ft FWL Sec 24

WELLBORE TARGET DETAILS (LAT/LONG)					
Name	TVD	+N/-S	+E/-W	Latitude	Longitude
KOP - JOHNSON TRUST 6	6682.0	627.7	824.9	40.138985	-104.956670
7" ICP - JOHNSON TRUST 6	7255.0	54.7	826.5	40.137412	-104.956664
BHL - JOHNSON TRUST 6	7255.0	-4346.4	839.0	40.125331	-104.956620



Planning Report



Database:	EDM 5000.1 Single User Db	Local Co-ordinate Reference:	Well JOHNSON TRUST 6
Company:	EXTRACTION OIL & GAS	TVD Reference:	KB-EST @ 4948.0usft (Original Well Elev)
Project:	WELD COUNTY, COLORADO (NAD 83)	MD Reference:	KB-EST @ 4948.0usft (Original Well Elev)
Site:	NW SW SEC. 13 T2N R68W 6th P.M.	North Reference:	True
Well:	JOHNSON TRUST 6	Survey Calculation Method:	Minimum Curvature
Wellbore:	ORIGINAL WELLBORE		
Design:	PROPOSAL #1		

Project	WELD COUNTY, COLORADO (NAD 83)		
Map System:	US State Plane 1983	System Datum:	Mean Sea Level
Geo Datum:	North American Datum 1983		
Map Zone:	Colorado Northern Zone		Using geodetic scale factor

Site	NW SW SEC. 13 T2N R68W 6th P.M.		
Site Position:		Northing:	1,293,448.40 usft
From:	Lat/Long	Easting:	3,151,083.18 usft
Position Uncertainty:	0.0 usft	Slot Radius:	1.10000ft
		Latitude:	40.137646
		Longitude:	-104.959619
		Grid Convergence:	0.35 °

Well	JOHNSON TRUST 6		
Well Position	+N/-S	-139.9 usft	Northing:
	+E/-W	-0.3 usft	Easting:
Position Uncertainty		0.0 usft	Wellhead Elevation:
			Latitude:
			Longitude:
			Ground Level:

Wellbore	ORIGINAL WELLBORE				
Magnetics	Model Name	Sample Date	Declination (°)	Dip Angle (°)	Field Strength (nT)
	IGRF2010	08/10/2014	8.50	66.69	52,623

Design	PROPOSAL #1			
Audit Notes:				
Version:	Phase:	PROTOTYPE	Tie On Depth:	0.0
Vertical Section:	Depth From (TVD) (usft)	+N/-S (usft)	+E/-W (usft)	Direction (°)
	7,255.0	0.0	0.0	169.07

Plan Sections											
MD (usft)	Inc (°)	Azi (°)	Vertical Depth	SS (usft)	+N/-S (usft)	+E/-W (usft)	Dogleg Rate (°/100usft)	Build Rate (°/100usft)	Turn Rate (°/100usft)	TFO (°)	Target
0.0	0.00	0.00	0.0	-4,948.0	0.0	0.0	0.00	0.00	0.00	0.00	
1,450.0	0.00	0.00	1,450.0	-3,498.0	0.0	0.0	0.00	0.00	0.00	0.00	
2,090.5	12.81	52.73	2,085.2	-2,862.8	43.2	56.7	2.00	2.00	0.00	52.73	
6,122.5	12.81	52.73	6,016.8	1,068.8	584.5	768.2	0.00	0.00	0.00	0.00	
6,763.0	0.00	0.00	6,652.0	1,704.0	627.7	824.9	2.00	-2.00	0.00	180.00	
6,793.0	0.00	0.00	6,682.0	1,734.0	627.7	824.9	0.00	0.00	0.00	0.00	KOP - JOHNSON T
7,693.1	90.00	179.84	7,255.0	2,307.0	54.7	826.5	10.00	10.00	19.98	179.84	7" ICP - JOHNSON
12,094.2	90.00	179.84	7,255.0	2,307.0	-4,346.4	839.0	0.00	0.00	0.00	-148.75	BHL - JOHNSON T

Planning Report



Database:	EDM 5000.1 Single User Db	Local Co-ordinate Reference:	Well JOHNSON TRUST 6
Company:	EXTRACTION OIL & GAS	TVD Reference:	KB-EST @ 4948.0usft (Original Well Elev)
Project:	WELD COUNTY, COLORADO (NAD 83)	MD Reference:	KB-EST @ 4948.0usft (Original Well Elev)
Site:	NW SW SEC. 13 T2N R68W 6th P.M.	North Reference:	True
Well:	JOHNSON TRUST 6	Survey Calculation Method:	Minimum Curvature
Wellbore:	ORIGINAL WELLBORE		
Design:	PROPOSAL #1		

Planned Survey

MD (usft)	Inc (°)	Azi (°)	TVD (usft)	SS (usft)	+N/-S (usft)	+E/-W (usft)	Vertical Section (usft)	Dogleg Rate (°/100usft)	Build Rate (°/100usft)	Turn Rate (°/100usft)
0.0	0.00	0.00	0.0	4,948.00	0.0	0.0	0.0	0.00	0.00	0.00
100.0	0.00	0.00	100.0	4,848.00	0.0	0.0	0.0	0.00	0.00	0.00
200.0	0.00	0.00	200.0	4,748.00	0.0	0.0	0.0	0.00	0.00	0.00
300.0	0.00	0.00	300.0	4,648.00	0.0	0.0	0.0	0.00	0.00	0.00
400.0	0.00	0.00	400.0	4,548.00	0.0	0.0	0.0	0.00	0.00	0.00
500.0	0.00	0.00	500.0	4,448.00	0.0	0.0	0.0	0.00	0.00	0.00
600.0	0.00	0.00	600.0	4,348.00	0.0	0.0	0.0	0.00	0.00	0.00
700.0	0.00	0.00	700.0	4,248.00	0.0	0.0	0.0	0.00	0.00	0.00
800.0	0.00	0.00	800.0	4,148.00	0.0	0.0	0.0	0.00	0.00	0.00
900.0	0.00	0.00	900.0	4,048.00	0.0	0.0	0.0	0.00	0.00	0.00
1,000.0	0.00	0.00	1,000.0	3,948.00	0.0	0.0	0.0	0.00	0.00	0.00
1,100.0	0.00	0.00	1,100.0	3,848.00	0.0	0.0	0.0	0.00	0.00	0.00
1,200.0	0.00	0.00	1,200.0	3,748.00	0.0	0.0	0.0	0.00	0.00	0.00
1,300.0	0.00	0.00	1,300.0	3,648.00	0.0	0.0	0.0	0.00	0.00	0.00
1,400.0	0.00	0.00	1,400.0	3,548.00	0.0	0.0	0.0	0.00	0.00	0.00
START NUDGE (2°/100ft BUR)										
1,450.0	0.00	0.00	1,450.0	3,498.00	0.0	0.0	0.0	0.00	0.00	0.00
1,500.0	1.00	52.73	1,500.0	3,448.00	0.3	0.3	-0.2	2.00	2.00	0.00
1,600.0	3.00	52.73	1,599.9	3,348.07	2.4	3.1	-1.7	2.00	2.00	0.00
1,700.0	5.00	52.73	1,699.7	3,248.32	6.6	8.7	-4.8	2.00	2.00	0.00
1,800.0	7.00	52.73	1,799.1	3,148.87	12.9	17.0	-9.5	2.00	2.00	0.00
1,900.0	9.00	52.73	1,898.2	3,049.85	21.4	28.1	-15.7	2.00	2.00	0.00
2,000.0	11.00	52.73	1,996.6	2,951.37	31.9	41.9	-23.4	2.00	2.00	0.00
EOB TO 12.81° INC										
2,090.5	12.81	52.73	2,085.2	2,862.83	43.2	56.7	-31.6	2.00	2.00	0.00
2,100.0	12.81	52.73	2,094.4	2,853.56	44.5	58.4	-32.6	0.00	0.00	0.00
2,200.0	12.81	52.73	2,192.0	2,756.05	57.9	76.1	-42.4	0.00	0.00	0.00
2,300.0	12.81	52.73	2,289.5	2,658.54	71.3	93.7	-52.3	0.00	0.00	0.00
2,400.0	12.81	52.73	2,387.0	2,561.03	84.7	111.4	-62.1	0.00	0.00	0.00
2,500.0	12.81	52.73	2,484.5	2,463.51	98.2	129.0	-71.9	0.00	0.00	0.00
2,600.0	12.81	52.73	2,582.0	2,366.00	111.6	146.6	-81.8	0.00	0.00	0.00
2,700.0	12.81	52.73	2,679.5	2,268.49	125.0	164.3	-91.6	0.00	0.00	0.00
2,800.0	12.81	52.73	2,777.0	2,170.98	138.4	181.9	-101.4	0.00	0.00	0.00
2,900.0	12.81	52.73	2,874.5	2,073.47	151.9	199.6	-111.3	0.00	0.00	0.00
3,000.0	12.81	52.73	2,972.0	1,975.96	165.3	217.2	-121.1	0.00	0.00	0.00
3,100.0	12.81	52.73	3,069.6	1,878.45	178.7	234.9	-131.0	0.00	0.00	0.00
3,200.0	12.81	52.73	3,167.1	1,780.94	192.1	252.5	-140.8	0.00	0.00	0.00
3,300.0	12.81	52.73	3,264.6	1,683.43	205.6	270.1	-150.6	0.00	0.00	0.00
3,400.0	12.81	52.73	3,362.1	1,585.91	219.0	287.8	-160.5	0.00	0.00	0.00
3,500.0	12.81	52.73	3,459.6	1,488.40	232.4	305.4	-170.3	0.00	0.00	0.00
3,600.0	12.81	52.73	3,557.1	1,390.89	245.8	323.1	-180.2	0.00	0.00	0.00
PARKMAN										
3,676.8	12.81	52.73	3,632.0	1,316.00	256.2	336.6	-187.7	0.00	0.00	0.00
3,700.0	12.81	52.73	3,654.6	1,293.38	259.3	340.7	-190.0	0.00	0.00	0.00
3,800.0	12.81	52.73	3,752.1	1,195.87	272.7	358.4	-199.8	0.00	0.00	0.00
3,900.0	12.81	52.73	3,849.6	1,098.36	286.1	376.0	-209.7	0.00	0.00	0.00
4,000.0	12.81	52.73	3,947.2	1,000.85	299.6	393.7	-219.5	0.00	0.00	0.00
4,100.0	12.81	52.73	4,044.7	903.34	313.0	411.3	-229.4	0.00	0.00	0.00
4,200.0	12.81	52.73	4,142.2	805.83	326.4	428.9	-239.2	0.00	0.00	0.00
4,300.0	12.81	52.73	4,239.7	708.31	339.8	446.6	-249.0	0.00	0.00	0.00
4,400.0	12.81	52.73	4,337.2	610.80	353.3	464.2	-258.9	0.00	0.00	0.00
4,500.0	12.81	52.73	4,434.7	513.29	366.7	481.9	-268.7	0.00	0.00	0.00
SUSSEX										
4,515.7	12.81	52.73	4,450.0	498.00	368.8	484.6	-270.3	0.00	0.00	0.00

Database:	EDM 5000.1 Single User Db	Local Co-ordinate Reference:	Well JOHNSON TRUST 6
Company:	EXTRACTION OIL & GAS	TVD Reference:	KB-EST @ 4948.0usft (Original Well Elev)
Project:	WELD COUNTY, COLORADO (NAD 83)	MD Reference:	KB-EST @ 4948.0usft (Original Well Elev)
Site:	NW SW SEC. 13 T2N R68W 6th P.M.	North Reference:	True
Well:	JOHNSON TRUST 6	Survey Calculation Method:	Minimum Curvature
Wellbore:	ORIGINAL WELLBORE		
Design:	PROPOSAL #1		

Planned Survey

MD (usft)	Inc (°)	Azi (°)	TVD (usft)	SS (usft)	+N/-S (usft)	+E/-W (usft)	Vertical Section (usft)	Dogleg Rate (°/100usft)	Build Rate (°/100usft)	Turn Rate (°/100usft)
4,600.0	12.81	52.73	4,532.2	415.78	380.1	499.5	-278.5	0.00	0.00	0.00
4,700.0	12.81	52.73	4,629.7	318.27	393.5	517.2	-288.4	0.00	0.00	0.00
4,800.0	12.81	52.73	4,727.2	220.76	407.0	534.8	-298.2	0.00	0.00	0.00
4,900.0	12.81	52.73	4,824.8	123.25	420.4	552.5	-308.1	0.00	0.00	0.00
SHANNON										
4,987.4	12.81	52.73	4,910.0	38.00	432.1	567.9	-316.7	0.00	0.00	0.00
5,000.0	12.81	52.73	4,922.3	25.74	433.8	570.1	-317.9	0.00	0.00	0.00
5,100.0	12.81	52.73	5,019.8	-71.77	447.2	587.7	-327.7	0.00	0.00	0.00
5,200.0	12.81	52.73	5,117.3	-169.29	460.7	605.4	-337.6	0.00	0.00	0.00
5,300.0	12.81	52.73	5,214.8	-266.80	474.1	623.0	-347.4	0.00	0.00	0.00
5,400.0	12.81	52.73	5,312.3	-364.31	487.5	640.7	-357.3	0.00	0.00	0.00
5,500.0	12.81	52.73	5,409.8	-461.82	500.9	658.3	-367.1	0.00	0.00	0.00
5,600.0	12.81	52.73	5,507.3	-559.33	514.4	676.0	-376.9	0.00	0.00	0.00
5,700.0	12.81	52.73	5,604.8	-656.84	527.8	693.6	-386.8	0.00	0.00	0.00
5,800.0	12.81	52.73	5,702.4	-754.35	541.2	711.3	-396.6	0.00	0.00	0.00
5,900.0	12.81	52.73	5,799.9	-851.86	554.6	728.9	-406.5	0.00	0.00	0.00
6,000.0	12.81	52.73	5,897.4	-949.37	568.1	746.5	-416.3	0.00	0.00	0.00
6,100.0	12.81	52.73	5,994.9	-1,046.89	581.5	764.2	-426.1	0.00	0.00	0.00
END OF TANGENT										
6,122.5	12.81	52.73	6,016.8	-1,068.83	584.5	768.2	-428.3	0.00	0.00	0.00
6,200.0	11.26	52.73	6,092.6	-1,144.62	594.3	781.0	-435.5	2.00	-2.00	0.00
6,300.0	9.26	52.73	6,191.0	-1,243.02	605.1	795.2	-443.4	2.00	-2.00	0.00
6,400.0	7.26	52.73	6,290.0	-1,341.97	613.8	806.6	-449.8	2.00	-2.00	0.00
6,500.0	5.26	52.73	6,389.4	-1,441.37	620.4	815.3	-454.6	2.00	-2.00	0.00
6,600.0	3.26	52.73	6,489.1	-1,541.09	624.9	821.2	-457.9	2.00	-2.00	0.00
6,700.0	1.26	52.73	6,589.0	-1,641.01	627.3	824.3	-459.7	2.00	-2.00	0.00
EOD TO VERTICAL										
6,763.0	0.00	0.00	6,652.0	-1,704.00	627.7	824.9	-460.0	2.00	-2.00	0.00
KOP (10°/100ft BUR)										
6,793.0	0.00	0.00	6,682.0	-1,734.00	627.7	824.9	-460.0	0.00	0.00	0.00
6,800.0	0.70	179.84	6,689.0	-1,741.00	627.7	824.9	-459.9	10.00	10.00	0.00
6,900.0	10.70	179.84	6,788.4	-1,840.38	617.7	824.9	-450.2	10.00	10.00	0.00
7,000.0	20.70	179.84	6,884.5	-1,936.53	590.7	825.0	-423.6	10.00	10.00	0.00
7,100.0	30.70	179.84	6,974.5	-2,026.52	547.4	825.1	-381.1	10.00	10.00	0.00
7,200.0	40.70	179.84	7,055.6	-2,107.63	489.1	825.3	-323.9	10.00	10.00	0.00
SHARON SPRINGS										
7,267.4	47.43	179.84	7,104.0	-2,156.00	442.3	825.4	-277.9	10.00	10.00	0.00
7,300.0	50.70	179.84	7,125.4	-2,177.39	417.7	825.5	-253.6	10.00	10.00	0.00
NIOBRARA										
7,313.8	52.08	179.84	7,134.0	-2,186.00	406.9	825.5	-243.0	10.00	10.00	0.00
7,400.0	60.70	179.84	7,181.7	-2,233.68	335.2	825.7	-172.6	10.00	10.00	0.00
7,500.0	70.70	179.84	7,222.8	-2,274.78	244.1	826.0	-83.2	10.00	10.00	0.00
7,600.0	80.69	179.84	7,247.5	-2,299.46	147.4	826.2	11.9	10.00	10.00	0.00
7" ICP - JOHNSON TRUST 6 - NIO B TARGET										
7,693.1	90.00	179.84	7,255.0	-2,307.00	54.7	826.5	103.0	10.00	10.00	0.00
7,700.0	90.00	179.84	7,255.0	-2,307.00	47.8	826.5	109.7	0.00	0.00	0.00
7,800.0	90.00	179.84	7,255.0	-2,306.99	-52.2	826.8	208.0	0.00	0.00	0.00
7,900.0	90.00	179.84	7,255.0	-2,306.99	-152.2	827.1	306.2	0.00	0.00	0.00
8,000.0	90.00	179.84	7,255.0	-2,306.98	-252.2	827.4	404.5	0.00	0.00	0.00
8,100.0	90.00	179.84	7,255.0	-2,306.98	-352.2	827.6	502.7	0.00	0.00	0.00
8,200.0	90.00	179.84	7,255.0	-2,306.97	-452.2	827.9	600.9	0.00	0.00	0.00
8,300.0	90.00	179.84	7,255.0	-2,306.97	-552.2	828.2	699.2	0.00	0.00	0.00
8,400.0	90.00	179.84	7,255.0	-2,306.96	-652.2	828.5	797.4	0.00	0.00	0.00

Database:	EDM 5000.1 Single User Db	Local Co-ordinate Reference:	Well JOHNSON TRUST 6
Company:	EXTRACTION OIL & GAS	TVD Reference:	KB-EST @ 4948.0usft (Original Well Elev)
Project:	WELD COUNTY, COLORADO (NAD 83)	MD Reference:	KB-EST @ 4948.0usft (Original Well Elev)
Site:	NW SW SEC. 13 T2N R68W 6th P.M.	North Reference:	True
Well:	JOHNSON TRUST 6	Survey Calculation Method:	Minimum Curvature
Wellbore:	ORIGINAL WELLBORE		
Design:	PROPOSAL #1		

Planned Survey

MD (usft)	Inc (°)	Azi (°)	TVD (usft)	SS (usft)	+N/-S (usft)	+E/-W (usft)	Vertical Section (usft)	Dogleg Rate (°/100usft)	Build Rate (°/100usft)	Turn Rate (°/100usft)
8,500.0	90.00	179.84	7,255.0	-2,306.96	-752.2	828.8	895.7	0.00	0.00	0.00
8,600.0	90.00	179.84	7,255.0	-2,306.95	-852.2	829.0	993.9	0.00	0.00	0.00
8,700.0	90.00	179.84	7,255.0	-2,306.95	-952.2	829.3	1,092.1	0.00	0.00	0.00
8,800.0	90.00	179.84	7,254.9	-2,306.95	-1,052.2	829.6	1,190.4	0.00	0.00	0.00
8,900.0	90.00	179.84	7,254.9	-2,306.95	-1,152.2	829.9	1,288.6	0.00	0.00	0.00
9,000.0	90.00	179.84	7,254.9	-2,306.94	-1,252.2	830.2	1,386.9	0.00	0.00	0.00
9,100.0	90.00	179.84	7,254.9	-2,306.94	-1,352.2	830.4	1,485.1	0.00	0.00	0.00
9,200.0	90.00	179.84	7,254.9	-2,306.94	-1,452.2	830.7	1,583.4	0.00	0.00	0.00
9,300.0	90.00	179.84	7,254.9	-2,306.94	-1,552.2	831.0	1,681.6	0.00	0.00	0.00
9,400.0	90.00	179.84	7,254.9	-2,306.93	-1,652.2	831.3	1,779.8	0.00	0.00	0.00
9,500.0	90.00	179.84	7,254.9	-2,306.93	-1,752.2	831.6	1,878.1	0.00	0.00	0.00
9,600.0	90.00	179.84	7,254.9	-2,306.93	-1,852.2	831.9	1,976.3	0.00	0.00	0.00
9,700.0	90.00	179.84	7,254.9	-2,306.93	-1,952.2	832.1	2,074.6	0.00	0.00	0.00
9,800.0	90.00	179.84	7,254.9	-2,306.93	-2,052.2	832.4	2,172.8	0.00	0.00	0.00
9,900.0	90.00	179.84	7,254.9	-2,306.93	-2,152.2	832.7	2,271.0	0.00	0.00	0.00
10,000.0	90.00	179.84	7,254.9	-2,306.93	-2,252.2	833.0	2,369.3	0.00	0.00	0.00
10,100.0	90.00	179.84	7,254.9	-2,306.93	-2,352.2	833.3	2,467.5	0.00	0.00	0.00
10,200.0	90.00	179.84	7,254.9	-2,306.93	-2,452.2	833.6	2,565.8	0.00	0.00	0.00
10,300.0	90.00	179.84	7,254.9	-2,306.93	-2,552.2	833.8	2,664.0	0.00	0.00	0.00
10,400.0	90.00	179.84	7,254.9	-2,306.93	-2,652.2	834.1	2,762.2	0.00	0.00	0.00
10,500.0	90.00	179.84	7,254.9	-2,306.94	-2,752.2	834.4	2,860.5	0.00	0.00	0.00
10,600.0	90.00	179.84	7,254.9	-2,306.94	-2,852.2	834.7	2,958.7	0.00	0.00	0.00
10,700.0	90.00	179.84	7,254.9	-2,306.94	-2,952.2	835.0	3,057.0	0.00	0.00	0.00
10,800.0	90.00	179.84	7,254.9	-2,306.94	-3,052.2	835.3	3,155.2	0.00	0.00	0.00
10,900.0	90.00	179.84	7,254.9	-2,306.95	-3,152.2	835.5	3,253.4	0.00	0.00	0.00
11,000.0	90.00	179.84	7,254.9	-2,306.95	-3,252.2	835.8	3,351.7	0.00	0.00	0.00
11,100.0	90.00	179.84	7,255.0	-2,306.95	-3,352.2	836.1	3,449.9	0.00	0.00	0.00
11,200.0	90.00	179.84	7,255.0	-2,306.96	-3,452.2	836.4	3,548.2	0.00	0.00	0.00
11,300.0	90.00	179.84	7,255.0	-2,306.96	-3,552.2	836.7	3,646.4	0.00	0.00	0.00
11,400.0	90.00	179.84	7,255.0	-2,306.96	-3,652.2	837.0	3,744.7	0.00	0.00	0.00
11,500.0	90.00	179.84	7,255.0	-2,306.97	-3,752.2	837.3	3,842.9	0.00	0.00	0.00
11,600.0	90.00	179.84	7,255.0	-2,306.97	-3,852.2	837.5	3,941.1	0.00	0.00	0.00
11,700.0	90.00	179.84	7,255.0	-2,306.98	-3,952.2	837.8	4,039.4	0.00	0.00	0.00
11,800.0	90.00	179.84	7,255.0	-2,306.98	-4,052.2	838.1	4,137.6	0.00	0.00	0.00
11,900.0	90.00	179.84	7,255.0	-2,306.99	-4,152.2	838.4	4,235.9	0.00	0.00	0.00
12,000.0	90.00	179.84	7,255.0	-2,306.99	-4,252.2	838.7	4,334.1	0.00	0.00	0.00
BHL - JOHNSON TRUST 6										
12,094.2	90.00	179.84	7,255.0	-2,307.00	-4,346.4	839.0	4,426.6	0.00	0.00	0.00

Formations

MD (usft)	TVD (usft)	Name	Lithology	Dip (°)	Dip Direction (°)
3,676.8	3,632.0	PARKMAN			
4,515.7	4,450.0	SUSSEX			
4,987.4	4,910.0	SHANNON			
7,267.4	7,104.0	SHARON SPRINGS			
7,313.8	7,134.0	NIOBRARA			
7,693.1	7,255.0	NIO B TARGET			

Database:	EDM 5000.1 Single User Db	Local Co-ordinate Reference:	Well JOHNSON TRUST 6
Company:	EXTRACTION OIL & GAS	TVD Reference:	KB-EST @ 4948.0usft (Original Well Elev)
Project:	WELD COUNTY, COLORADO (NAD 83)	MD Reference:	KB-EST @ 4948.0usft (Original Well Elev)
Site:	NW SW SEC. 13 T2N R68W 6th P.M.	North Reference:	True
Well:	JOHNSON TRUST 6	Survey Calculation Method:	Minimum Curvature
Wellbore:	ORIGINAL WELLBORE		
Design:	PROPOSAL #1		

Plan Annotations

MD (usft)	TVD (usft)	Local Coordinates		Comment
		+N/-S (usft)	+E/-W (usft)	
1,450.0	1,450.0	0.0	0.0	START NUDGE (2°/100ft BUR)
2,090.5	2,085.2	43.2	56.7	EOB TO 12.81° INC
6,122.5	6,016.8	584.5	768.2	END OF TANGENT
6,763.0	6,652.0	627.7	824.9	EOD TO VERTICAL
6,793.0	6,682.0	627.7	824.9	KOP (10°/100ft BUR)
7,693.1	7,255.0	54.7	826.5	7" ICP - JOHNSON TRUST 6
12,094.2	7,255.0	-4,346.4	839.0	BHL - JOHNSON TRUST 6