

EXTRACTION OIL & GAS

WELD COUNTY, COLORADO (NAD 83)

NW SW SEC. 13 T2N R68W 6th P.M.

JOHNSON TRUST 5

ORIGINAL WELLBORE

07 October, 2014

Plan: PROPOSAL #1



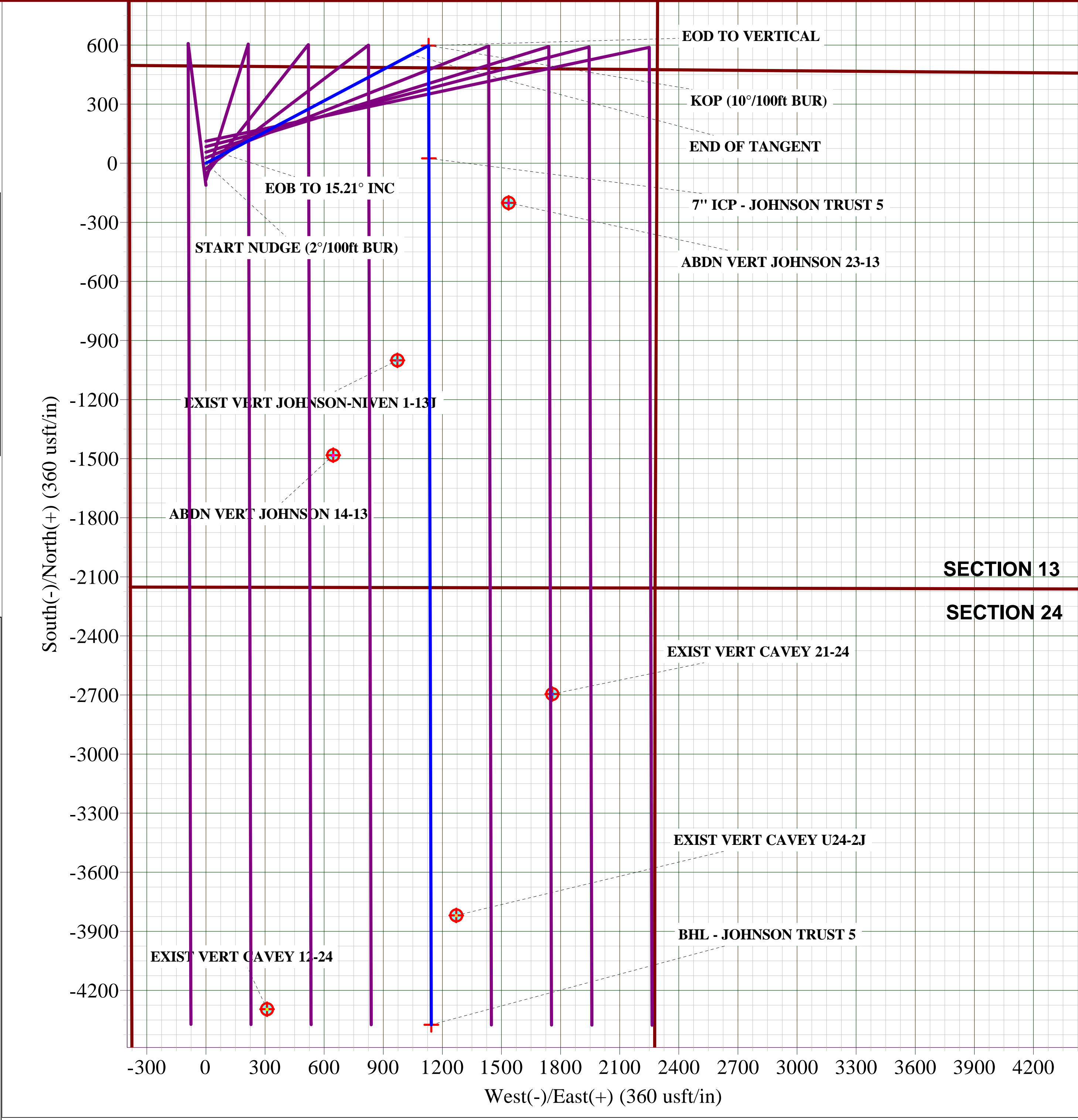
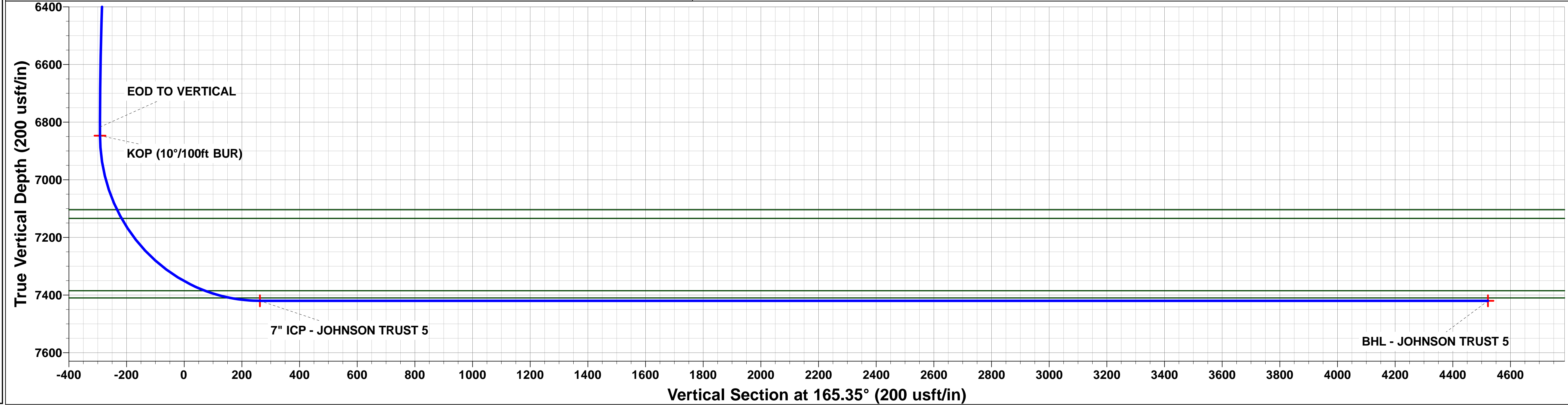
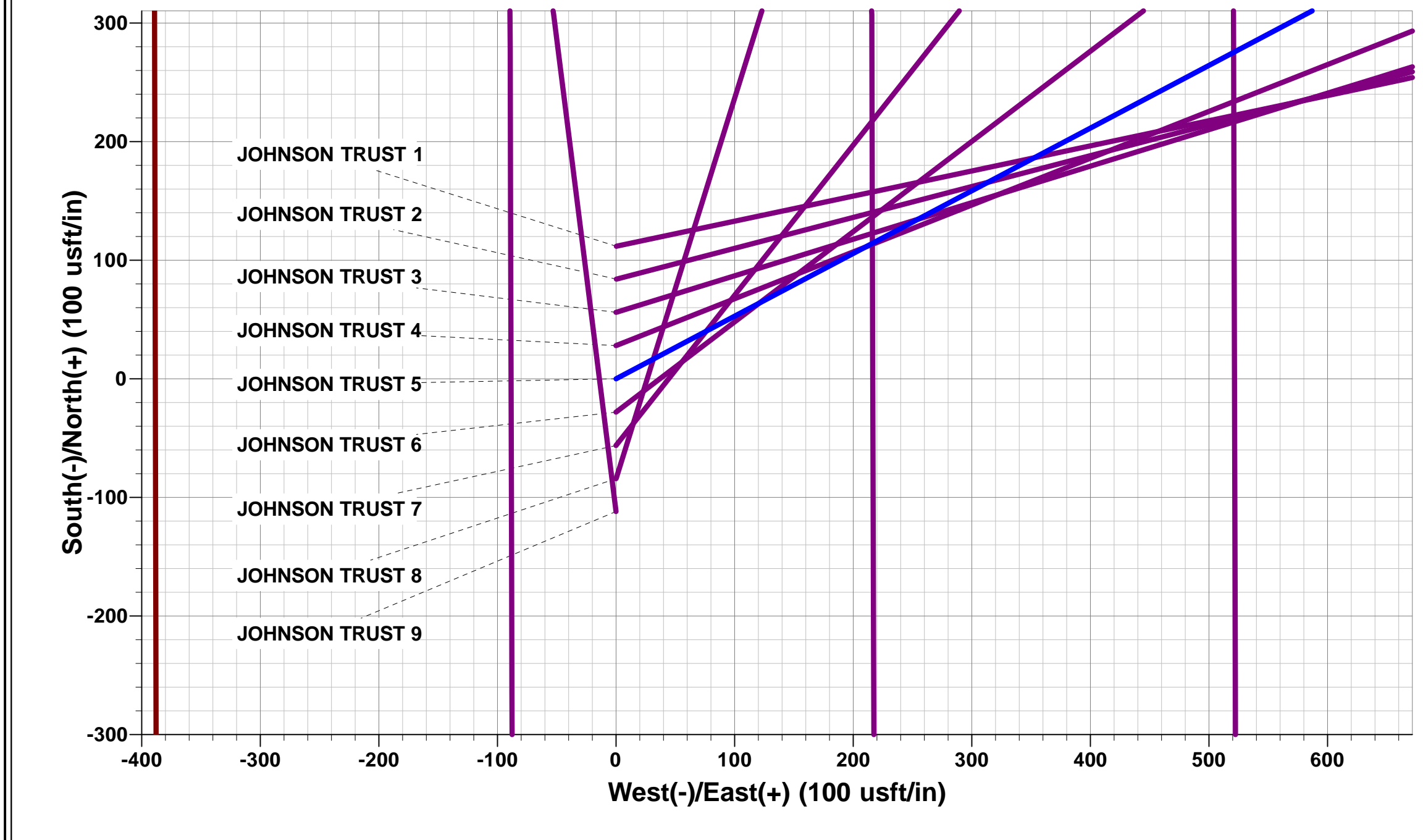
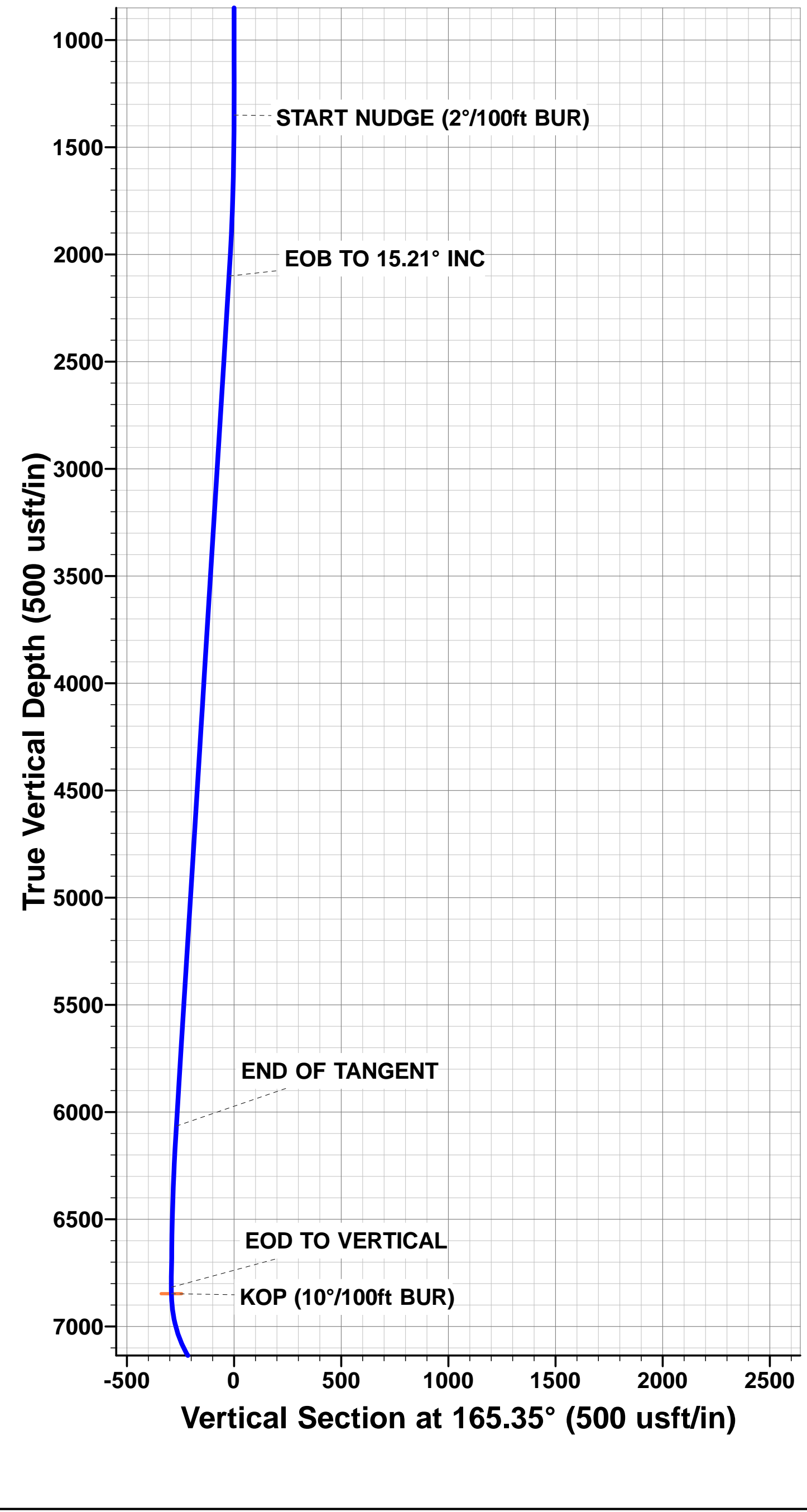


Project: WELD COUNTY, COLORADO (NAD 83)
Site: NW SW SEC. 13 T2N R68W 6th P.M.
Well: JOHNSON TRUST 5
Wellbore: ORIGINAL WELLBORE
Design: PROPOSAL #1

ANNOTATIONS								
TVD	MD	Inc	Azi	+N/-S	+E/-W	VSec	Dep	Annotation
1350.0	1350.0	0.00	0.00	0.0	0.0	0.0	0.0	START NUDGE (2°/100ft BUR)
2101.4	2110.3	15.21	62.13	46.9	88.7	-22.9	100.3	EOB TO 15.21° INC
6065.6	6218.3	15.21	62.13	550.5	1041.2	-269.2	1177.8	END OF TANGENT
6817.0	6978.6	0.00	0.00	597.4	1129.9	-292.2	1278.1	EOD TO VERTICAL
6847.0	7008.6	0.00	0.00	597.4	1129.9	-292.2	1278.1	KOP (10°/100ft BUR)
7420.0	7908.6	90.00	179.84	24.4	1131.5	262.6	1851.1	7" ICP - JOHNSON TRUST 5
7420.0	12307.9	90.00	179.85	-4374.8	1143.8	4521.8	6250.3	BHL - JOHNSON TRUST 5

PROPOSED LOCAL COORDINATES:	
SHL:	2153ft FSL & 389ft FWL Sec 13
7" ICP:	2179ft FSL & 1520ft FWL Sec 13
BHL:	2220ft FNL & 1520ft FWL Sec 24

WELLBORE TARGET DETAILS (LAT/LONG)					
Name	TVD	+N/-S	+E/-W	Latitude	Longitude
KOP - JOHNSON TRUST 5	6847.0	597.4	1129.9	40.138979	-104.955579
7" ICP - JOHNSON TRUST 5	7420.0	24.4	1131.5	40.137406	-104.955573
BHL - JOHNSON TRUST 5	7420.0	-4374.8	1143.8	40.125330	-104.955530



Planning Report



Database:	EDM 5000.1 Single User Db	Local Co-ordinate Reference:	Well JOHNSON TRUST 5
Company:	EXTRACTION OIL & GAS	TVD Reference:	KB-EST @ 4949.0usft (Original Well Elev)
Project:	WELD COUNTY, COLORADO (NAD 83)	MD Reference:	KB-EST @ 4949.0usft (Original Well Elev)
Site:	NW SW SEC. 13 T2N R68W 6th P.M.	North Reference:	True
Well:	JOHNSON TRUST 5	Survey Calculation Method:	Minimum Curvature
Wellbore:	ORIGINAL WELLBORE		
Design:	PROPOSAL #1		

Project	WELD COUNTY, COLORADO (NAD 83)		
Map System:	US State Plane 1983	System Datum:	Mean Sea Level
Geo Datum:	North American Datum 1983		
Map Zone:	Colorado Northern Zone		Using geodetic scale factor

Site	NW SW SEC. 13 T2N R68W 6th P.M.		
Site Position:		Northing:	1,293,448.40 usft
From:	Lat/Long	Easting:	3,151,083.18 usft
Position Uncertainty:	0.0 usft	Slot Radius:	1.10000ft
		Latitude:	40.137646
		Longitude:	-104.959619
		Grid Convergence:	0.35 °

Well	JOHNSON TRUST 5		
Well Position	+N/-S	-111.8 usft	Northing:
	+E/-W	-0.3 usft	Easting:
Position Uncertainty		0.0 usft	Wellhead Elevation:
			Latitude:
			Longitude:
			Ground Level:

Wellbore	ORIGINAL WELLBORE				
Magnetics	Model Name	Sample Date	Declination (°)	Dip Angle (°)	Field Strength (nT)
	IGRF2010	07/10/2014	8.50	66.69	52,623

Design	PROPOSAL #1			
Audit Notes:				
Version:	Phase:	PROTOTYPE	Tie On Depth:	0.0
Vertical Section:	Depth From (TVD) (usft)	+N/-S (usft)	+E/-W (usft)	Direction (°)
	7,420.0	0.0	0.0	165.35

Plan Sections											
MD (usft)	Inc (°)	Azi (°)	Vertical Depth	SS (usft)	+N/-S (usft)	+E/-W (usft)	Dogleg Rate (°/100usft)	Build Rate (°/100usft)	Turn Rate (°/100usft)	TFO (°)	Target
0.0	0.00	0.00	0.0	-4,949.0	0.0	0.0	0.00	0.00	0.00	0.00	
1,350.0	0.00	0.00	1,350.0	-3,599.0	0.0	0.0	0.00	0.00	0.00	0.00	
2,110.3	15.21	62.13	2,101.4	-2,847.6	46.9	88.7	2.00	2.00	0.00	62.13	
6,218.3	15.21	62.13	6,065.6	1,116.6	550.5	1,041.2	0.00	0.00	0.00	0.00	
6,978.6	0.00	0.00	6,817.0	1,868.0	597.4	1,129.9	2.00	-2.00	0.00	180.00	
7,008.6	0.00	0.00	6,847.0	1,898.0	597.4	1,129.9	0.00	0.00	0.00	0.00	KOP - JOHNSON T
7,908.6	90.00	179.84	7,420.0	2,471.0	24.4	1,131.5	10.00	10.00	19.98	179.84	7" ICP - JOHNSON
12,307.9	90.00	179.85	7,420.0	2,471.0	-4,374.8	1,143.8	0.00	0.00	0.00	52.48	BHL - JOHNSON T

Planning Report



Database:	EDM 5000.1 Single User Db	Local Co-ordinate Reference:	Well JOHNSON TRUST 5
Company:	EXTRACTION OIL & GAS	TVD Reference:	KB-EST @ 4949.0usft (Original Well Elev)
Project:	WELD COUNTY, COLORADO (NAD 83)	MD Reference:	KB-EST @ 4949.0usft (Original Well Elev)
Site:	NW SW SEC. 13 T2N R68W 6th P.M.	North Reference:	True
Well:	JOHNSON TRUST 5	Survey Calculation Method:	Minimum Curvature
Wellbore:	ORIGINAL WELLBORE		
Design:	PROPOSAL #1		

Planned Survey

MD (usft)	Inc (°)	Azi (°)	TVD (usft)	SS (usft)	+N/-S (usft)	+E/-W (usft)	Vertical Section (usft)	Dogleg Rate (°/100usft)	Build Rate (°/100usft)	Turn Rate (°/100usft)
0.0	0.00	0.00	0.0	4,949.00	0.0	0.0	0.0	0.00	0.00	0.00
100.0	0.00	0.00	100.0	4,849.00	0.0	0.0	0.0	0.00	0.00	0.00
200.0	0.00	0.00	200.0	4,749.00	0.0	0.0	0.0	0.00	0.00	0.00
300.0	0.00	0.00	300.0	4,649.00	0.0	0.0	0.0	0.00	0.00	0.00
400.0	0.00	0.00	400.0	4,549.00	0.0	0.0	0.0	0.00	0.00	0.00
500.0	0.00	0.00	500.0	4,449.00	0.0	0.0	0.0	0.00	0.00	0.00
600.0	0.00	0.00	600.0	4,349.00	0.0	0.0	0.0	0.00	0.00	0.00
700.0	0.00	0.00	700.0	4,249.00	0.0	0.0	0.0	0.00	0.00	0.00
800.0	0.00	0.00	800.0	4,149.00	0.0	0.0	0.0	0.00	0.00	0.00
900.0	0.00	0.00	900.0	4,049.00	0.0	0.0	0.0	0.00	0.00	0.00
1,000.0	0.00	0.00	1,000.0	3,949.00	0.0	0.0	0.0	0.00	0.00	0.00
1,100.0	0.00	0.00	1,100.0	3,849.00	0.0	0.0	0.0	0.00	0.00	0.00
1,200.0	0.00	0.00	1,200.0	3,749.00	0.0	0.0	0.0	0.00	0.00	0.00
1,300.0	0.00	0.00	1,300.0	3,649.00	0.0	0.0	0.0	0.00	0.00	0.00
START NUDGE (2°/100ft BUR)										
1,350.0	0.00	0.00	1,350.0	3,599.00	0.0	0.0	0.0	0.00	0.00	0.00
1,400.0	1.00	62.13	1,400.0	3,549.00	0.2	0.4	-0.1	2.00	2.00	0.00
1,500.0	3.00	62.13	1,499.9	3,449.07	1.8	3.5	-0.9	2.00	2.00	0.00
1,600.0	5.00	62.13	1,599.7	3,349.32	5.1	9.6	-2.5	2.00	2.00	0.00
1,700.0	7.00	62.13	1,699.1	3,249.87	10.0	18.9	-4.9	2.00	2.00	0.00
1,800.0	9.00	62.13	1,798.2	3,150.85	16.5	31.2	-8.1	2.00	2.00	0.00
1,900.0	11.00	62.13	1,896.6	3,052.37	24.6	46.5	-12.0	2.00	2.00	0.00
2,000.0	13.00	62.13	1,994.4	2,954.56	34.3	64.9	-16.8	2.00	2.00	0.00
2,100.0	15.00	62.13	2,091.5	2,857.54	45.6	86.3	-22.3	2.00	2.00	0.00
EOB TO 15.21° INC										
2,110.3	15.21	62.13	2,101.4	2,847.58	46.9	88.7	-22.9	2.00	2.00	0.00
2,200.0	15.21	62.13	2,188.0	2,761.03	57.9	109.5	-28.3	0.00	0.00	0.00
2,300.0	15.21	62.13	2,284.5	2,664.54	70.1	132.7	-34.3	0.00	0.00	0.00
2,400.0	15.21	62.13	2,381.0	2,568.04	82.4	155.8	-40.3	0.00	0.00	0.00
2,500.0	15.21	62.13	2,477.5	2,471.54	94.7	179.0	-46.3	0.00	0.00	0.00
2,600.0	15.21	62.13	2,574.0	2,375.04	106.9	202.2	-52.3	0.00	0.00	0.00
2,700.0	15.21	62.13	2,670.5	2,278.54	119.2	225.4	-58.3	0.00	0.00	0.00
2,800.0	15.21	62.13	2,767.0	2,182.04	131.4	248.6	-64.3	0.00	0.00	0.00
2,900.0	15.21	62.13	2,863.5	2,085.54	143.7	271.8	-70.3	0.00	0.00	0.00
3,000.0	15.21	62.13	2,960.0	1,989.04	156.0	295.0	-76.3	0.00	0.00	0.00
3,100.0	15.21	62.13	3,056.5	1,892.55	168.2	318.2	-82.3	0.00	0.00	0.00
3,200.0	15.21	62.13	3,153.0	1,796.05	180.5	341.3	-88.3	0.00	0.00	0.00
3,300.0	15.21	62.13	3,249.5	1,699.55	192.7	364.5	-94.3	0.00	0.00	0.00
3,400.0	15.21	62.13	3,346.0	1,603.05	205.0	387.7	-100.3	0.00	0.00	0.00
3,500.0	15.21	62.13	3,442.4	1,506.55	217.3	410.9	-106.3	0.00	0.00	0.00
3,600.0	15.21	62.13	3,538.9	1,410.05	229.5	434.1	-112.2	0.00	0.00	0.00
PARKMAN										
3,696.4	15.21	62.13	3,632.0	1,317.00	241.3	456.5	-118.0	0.00	0.00	0.00
3,700.0	15.21	62.13	3,635.4	1,313.55	241.8	457.3	-118.2	0.00	0.00	0.00
3,800.0	15.21	62.13	3,731.9	1,217.05	254.0	480.5	-124.2	0.00	0.00	0.00
3,900.0	15.21	62.13	3,828.4	1,120.55	266.3	503.7	-130.2	0.00	0.00	0.00
4,000.0	15.21	62.13	3,924.9	1,024.06	278.6	526.9	-136.2	0.00	0.00	0.00
4,100.0	15.21	62.13	4,021.4	927.56	290.8	550.0	-142.2	0.00	0.00	0.00
4,200.0	15.21	62.13	4,117.9	831.06	303.1	573.2	-148.2	0.00	0.00	0.00
4,300.0	15.21	62.13	4,214.4	734.56	315.3	596.4	-154.2	0.00	0.00	0.00
4,400.0	15.21	62.13	4,310.9	638.06	327.6	619.6	-160.2	0.00	0.00	0.00
4,500.0	15.21	62.13	4,407.4	541.56	339.9	642.8	-166.2	0.00	0.00	0.00
SUSSEX										
4,544.1	15.21	62.13	4,450.0	499.00	345.3	653.0	-168.9	0.00	0.00	0.00

Database:	EDM 5000.1 Single User Db	Local Co-ordinate Reference:	Well JOHNSON TRUST 5
Company:	EXTRACTION OIL & GAS	TVD Reference:	KB-EST @ 4949.0usft (Original Well Elev)
Project:	WELD COUNTY, COLORADO (NAD 83)	MD Reference:	KB-EST @ 4949.0usft (Original Well Elev)
Site:	NW SW SEC. 13 T2N R68W 6th P.M.	North Reference:	True
Well:	JOHNSON TRUST 5	Survey Calculation Method:	Minimum Curvature
Wellbore:	ORIGINAL WELLBORE		
Design:	PROPOSAL #1		

Planned Survey

MD (usft)	Inc (°)	Azi (°)	TVD (usft)	SS (usft)	+N/-S (usft)	+E/-W (usft)	Vertical Section (usft)	Dogleg Rate (°/100usft)	Build Rate (°/100usft)	Turn Rate (°/100usft)
4,600.0	15.21	62.13	4,503.9	445.06	352.1	666.0	-172.2	0.00	0.00	0.00
4,700.0	15.21	62.13	4,600.4	348.56	364.4	689.2	-178.2	0.00	0.00	0.00
4,800.0	15.21	62.13	4,696.9	252.07	376.6	712.4	-184.2	0.00	0.00	0.00
4,900.0	15.21	62.13	4,793.4	155.57	388.9	735.5	-190.2	0.00	0.00	0.00
5,000.0	15.21	62.13	4,889.9	59.07	401.2	758.7	-196.2	0.00	0.00	0.00
SHANNON										
5,020.8	15.21	62.13	4,910.0	39.00	403.7	763.6	-197.4	0.00	0.00	0.00
5,100.0	15.21	62.13	4,986.4	-37.43	413.4	781.9	-202.2	0.00	0.00	0.00
5,200.0	15.21	62.13	5,082.9	-133.93	425.7	805.1	-208.2	0.00	0.00	0.00
5,300.0	15.21	62.13	5,179.4	-230.43	437.9	828.3	-214.2	0.00	0.00	0.00
5,400.0	15.21	62.13	5,275.9	-326.93	450.2	851.5	-220.2	0.00	0.00	0.00
5,500.0	15.21	62.13	5,372.4	-423.43	462.5	874.7	-226.2	0.00	0.00	0.00
5,600.0	15.21	62.13	5,468.9	-519.92	474.7	897.9	-232.2	0.00	0.00	0.00
5,700.0	15.21	62.13	5,565.4	-616.42	487.0	921.0	-238.2	0.00	0.00	0.00
5,800.0	15.21	62.13	5,661.9	-712.92	499.2	944.2	-244.2	0.00	0.00	0.00
5,900.0	15.21	62.13	5,758.4	-809.42	511.5	967.4	-250.2	0.00	0.00	0.00
6,000.0	15.21	62.13	5,854.9	-905.92	523.8	990.6	-256.2	0.00	0.00	0.00
6,100.0	15.21	62.13	5,951.4	-1,002.42	536.0	1,013.8	-262.1	0.00	0.00	0.00
6,200.0	15.21	62.13	6,047.9	-1,098.92	548.3	1,037.0	-268.1	0.00	0.00	0.00
END OF TANGENT										
6,218.3	15.21	62.13	6,065.6	-1,116.58	550.5	1,041.2	-269.2	0.00	0.00	0.00
6,300.0	13.57	62.13	6,144.7	-1,195.71	560.0	1,059.2	-273.9	2.00	-2.00	0.00
6,400.0	11.57	62.13	6,242.3	-1,293.31	570.2	1,078.4	-278.9	2.00	-2.00	0.00
6,500.0	9.57	62.13	6,340.6	-1,391.61	578.8	1,094.6	-283.1	2.00	-2.00	0.00
6,600.0	7.57	62.13	6,439.5	-1,490.48	585.7	1,107.8	-286.5	2.00	-2.00	0.00
6,700.0	5.57	62.13	6,538.8	-1,589.82	591.1	1,117.9	-289.1	2.00	-2.00	0.00
6,800.0	3.57	62.13	6,638.5	-1,689.50	594.8	1,125.0	-290.9	2.00	-2.00	0.00
6,900.0	1.57	62.13	6,738.4	-1,789.39	596.9	1,128.9	-291.9	2.00	-2.00	0.00
EOD TO VERTICAL										
6,978.6	0.00	0.00	6,817.0	-1,868.00	597.4	1,129.9	-292.2	2.00	-2.00	0.00
7,000.0	0.00	0.00	6,838.4	-1,889.38	597.4	1,129.9	-292.2	0.00	0.00	0.00
KOP (10°/100ft BUR)										
7,008.6	0.00	0.00	6,847.0	-1,898.00	597.4	1,129.9	-292.2	0.00	0.00	0.00
7,100.0	9.14	179.84	6,938.0	-1,989.00	590.1	1,129.9	-285.1	10.00	10.00	0.00
7,200.0	19.14	179.84	7,034.8	-2,085.84	565.7	1,130.0	-261.5	10.00	10.00	0.00
SHARON SPRINGS										
7,275.1	26.65	179.84	7,104.0	-2,155.00	536.5	1,130.1	-233.2	10.00	10.00	0.00
7,300.0	29.14	179.84	7,126.0	-2,176.99	524.9	1,130.1	-222.0	10.00	10.00	0.00
NIOBRARA										
7,309.2	30.06	179.84	7,134.0	-2,185.00	520.3	1,130.1	-217.6	10.00	10.00	0.00
7,400.0	39.14	179.84	7,208.7	-2,259.65	468.9	1,130.3	-167.7	10.00	10.00	0.00
7,500.0	49.13	179.84	7,280.3	-2,331.33	399.3	1,130.5	-100.4	10.00	10.00	0.00
7,600.0	59.13	179.84	7,338.8	-2,389.84	318.4	1,130.7	-22.0	10.00	10.00	0.00
7,700.0	69.13	179.84	7,382.4	-2,433.42	228.5	1,131.0	65.0	10.00	10.00	0.00
FT HAYS										
7,707.4	69.87	179.84	7,385.0	-2,436.00	221.6	1,131.0	71.7	10.00	10.00	0.00
7,800.0	79.13	179.84	7,409.7	-2,460.72	132.4	1,131.2	158.0	10.00	10.00	0.00
CODELL										
7,801.5	79.28	179.84	7,410.0	-2,461.00	131.0	1,131.2	159.4	10.00	10.00	0.00
7,900.0	89.13	179.84	7,419.9	-2,470.93	33.1	1,131.5	254.2	10.00	10.00	0.00
7" ICP - JOHNSON TRUST 5										
7,908.6	90.00	179.84	7,420.0	-2,471.00	24.4	1,131.5	262.6	10.00	10.00	0.00
8,000.0	90.00	179.84	7,420.0	-2,471.01	-66.9	1,131.8	351.0	0.00	0.00	0.00

Planning Report



Database:	EDM 5000.1 Single User Db	Local Co-ordinate Reference:	Well JOHNSON TRUST 5
Company:	EXTRACTION OIL & GAS	TVD Reference:	KB-EST @ 4949.0usft (Original Well Elev)
Project:	WELD COUNTY, COLORADO (NAD 83)	MD Reference:	KB-EST @ 4949.0usft (Original Well Elev)
Site:	NW SW SEC. 13 T2N R68W 6th P.M.	North Reference:	True
Well:	JOHNSON TRUST 5	Survey Calculation Method:	Minimum Curvature
Wellbore:	ORIGINAL WELLBORE		
Design:	PROPOSAL #1		

Planned Survey

MD (usft)	Inc (°)	Azi (°)	TVD (usft)	SS (usft)	+N/-S (usft)	+E/-W (usft)	Vertical Section (usft)	Dogleg Rate (°/100usft)	Build Rate (°/100usft)	Turn Rate (°/100usft)
8,100.0	90.00	179.84	7,420.0	-2,471.01	-166.9	1,132.1	447.8	0.00	0.00	0.00
8,200.0	90.00	179.84	7,420.0	-2,471.02	-266.9	1,132.4	544.7	0.00	0.00	0.00
8,300.0	90.00	179.84	7,420.0	-2,471.02	-366.9	1,132.7	641.5	0.00	0.00	0.00
8,400.0	90.00	179.84	7,420.0	-2,471.03	-466.9	1,132.9	738.3	0.00	0.00	0.00
8,500.0	90.00	179.84	7,420.0	-2,471.04	-566.9	1,133.2	835.1	0.00	0.00	0.00
8,600.0	90.00	179.84	7,420.0	-2,471.04	-666.9	1,133.5	931.9	0.00	0.00	0.00
8,700.0	90.00	179.84	7,420.0	-2,471.04	-766.9	1,133.8	1,028.8	0.00	0.00	0.00
8,800.0	90.00	179.84	7,420.0	-2,471.05	-866.9	1,134.1	1,125.6	0.00	0.00	0.00
8,900.0	90.00	179.84	7,420.1	-2,471.05	-966.9	1,134.4	1,222.4	0.00	0.00	0.00
9,000.0	90.00	179.84	7,420.1	-2,471.06	-1,066.9	1,134.7	1,319.2	0.00	0.00	0.00
9,100.0	90.00	179.84	7,420.1	-2,471.06	-1,166.9	1,134.9	1,416.0	0.00	0.00	0.00
9,200.0	90.00	179.84	7,420.1	-2,471.06	-1,266.9	1,135.2	1,512.9	0.00	0.00	0.00
9,300.0	90.00	179.84	7,420.1	-2,471.07	-1,366.9	1,135.5	1,609.7	0.00	0.00	0.00
9,400.0	90.00	179.84	7,420.1	-2,471.07	-1,466.9	1,135.8	1,706.5	0.00	0.00	0.00
9,500.0	90.00	179.84	7,420.1	-2,471.07	-1,566.9	1,136.1	1,803.3	0.00	0.00	0.00
9,600.0	90.00	179.84	7,420.1	-2,471.07	-1,666.9	1,136.3	1,900.1	0.00	0.00	0.00
9,700.0	90.00	179.84	7,420.1	-2,471.07	-1,766.9	1,136.6	1,996.9	0.00	0.00	0.00
9,800.0	90.00	179.84	7,420.1	-2,471.07	-1,866.9	1,136.9	2,093.8	0.00	0.00	0.00
9,900.0	90.00	179.84	7,420.1	-2,471.08	-1,966.9	1,137.2	2,190.6	0.00	0.00	0.00
10,000.0	90.00	179.84	7,420.1	-2,471.08	-2,066.9	1,137.5	2,287.4	0.00	0.00	0.00
10,100.0	90.00	179.84	7,420.1	-2,471.08	-2,166.9	1,137.7	2,384.2	0.00	0.00	0.00
10,200.0	90.00	179.84	7,420.1	-2,471.08	-2,266.9	1,138.0	2,481.0	0.00	0.00	0.00
10,300.0	90.00	179.84	7,420.1	-2,471.08	-2,366.9	1,138.3	2,577.9	0.00	0.00	0.00
10,400.0	90.00	179.84	7,420.1	-2,471.07	-2,466.9	1,138.6	2,674.7	0.00	0.00	0.00
10,500.0	90.00	179.84	7,420.1	-2,471.07	-2,566.9	1,138.8	2,771.5	0.00	0.00	0.00
10,600.0	90.00	179.84	7,420.1	-2,471.07	-2,666.9	1,139.1	2,868.3	0.00	0.00	0.00
10,700.0	90.00	179.84	7,420.1	-2,471.07	-2,766.9	1,139.4	2,965.1	0.00	0.00	0.00
10,800.0	90.00	179.84	7,420.1	-2,471.07	-2,866.9	1,139.7	3,061.9	0.00	0.00	0.00
10,900.0	90.00	179.84	7,420.1	-2,471.07	-2,966.9	1,139.9	3,158.8	0.00	0.00	0.00
11,000.0	90.00	179.84	7,420.1	-2,471.06	-3,066.9	1,140.2	3,255.6	0.00	0.00	0.00
11,100.0	90.00	179.84	7,420.1	-2,471.06	-3,166.9	1,140.5	3,352.4	0.00	0.00	0.00
11,200.0	90.00	179.84	7,420.1	-2,471.06	-3,266.9	1,140.8	3,449.2	0.00	0.00	0.00
11,300.0	90.00	179.84	7,420.1	-2,471.05	-3,366.9	1,141.0	3,546.0	0.00	0.00	0.00
11,400.0	90.00	179.84	7,420.0	-2,471.05	-3,466.9	1,141.3	3,642.8	0.00	0.00	0.00
11,500.0	90.00	179.84	7,420.0	-2,471.05	-3,566.9	1,141.6	3,739.7	0.00	0.00	0.00
11,600.0	90.00	179.84	7,420.0	-2,471.04	-3,666.9	1,141.9	3,836.5	0.00	0.00	0.00
11,700.0	90.00	179.84	7,420.0	-2,471.04	-3,766.9	1,142.1	3,933.3	0.00	0.00	0.00
11,800.0	90.00	179.84	7,420.0	-2,471.03	-3,866.9	1,142.4	4,030.1	0.00	0.00	0.00
11,900.0	90.00	179.84	7,420.0	-2,471.03	-3,966.9	1,142.7	4,126.9	0.00	0.00	0.00
12,000.0	90.00	179.85	7,420.0	-2,471.02	-4,066.9	1,142.9	4,223.7	0.00	0.00	0.00
12,100.0	90.00	179.85	7,420.0	-2,471.01	-4,166.9	1,143.2	4,320.6	0.00	0.00	0.00
12,200.0	90.00	179.85	7,420.0	-2,471.01	-4,266.9	1,143.5	4,417.4	0.00	0.00	0.00
12,300.0	90.00	179.85	7,420.0	-2,471.00	-4,366.9	1,143.7	4,514.2	0.00	0.00	0.00
BHL - JOHNSON TRUST 5										
12,307.9	90.00	179.85	7,420.0	-2,471.00	-4,374.8	1,143.8	4,521.8	0.00	0.00	0.00

Database:	EDM 5000.1 Single User Db	Local Co-ordinate Reference:	Well JOHNSON TRUST 5
Company:	EXTRACTION OIL & GAS	TVD Reference:	KB-EST @ 4949.0usft (Original Well Elev)
Project:	WELD COUNTY, COLORADO (NAD 83)	MD Reference:	KB-EST @ 4949.0usft (Original Well Elev)
Site:	NW SW SEC. 13 T2N R68W 6th P.M.	North Reference:	True
Well:	JOHNSON TRUST 5	Survey Calculation Method:	Minimum Curvature
Wellbore:	ORIGINAL WELLBORE		
Design:	PROPOSAL #1		

Formations

MD (usft)	TVD (usft)	Name	Lithology	Dip (°)	Dip Direction (°)
3,696.4	3,632.0	PARKMAN			
4,544.1	4,450.0	SUSSEX			
5,020.8	4,910.0	SHANNON			
7,275.1	7,104.0	SHARON SPRINGS			
7,309.2	7,134.0	NIOBRARA			
7,707.4	7,385.0	FT HAYS			
7,801.5	7,410.0	CODELL			

Plan Annotations

MD (usft)	TVD (usft)	Local Coordinates		Comment
		+N/-S (usft)	+E/-W (usft)	
1,350.0	1,350.0	0.0	0.0	START NUDGE (2°/100ft BUR)
2,110.3	2,101.4	46.9	88.7	EOB TO 15.21° INC
6,218.3	6,065.6	550.5	1,041.2	END OF TANGENT
6,978.6	6,817.0	597.4	1,129.9	EOD TO VERTICAL
7,008.6	6,847.0	597.4	1,129.9	KOP (10°/100ft BUR)
7,908.6	7,420.0	24.4	1,131.5	7" ICP - JOHNSON TRUST 5
12,307.9	7,420.0	-4,374.8	1,143.8	BHL - JOHNSON TRUST 5