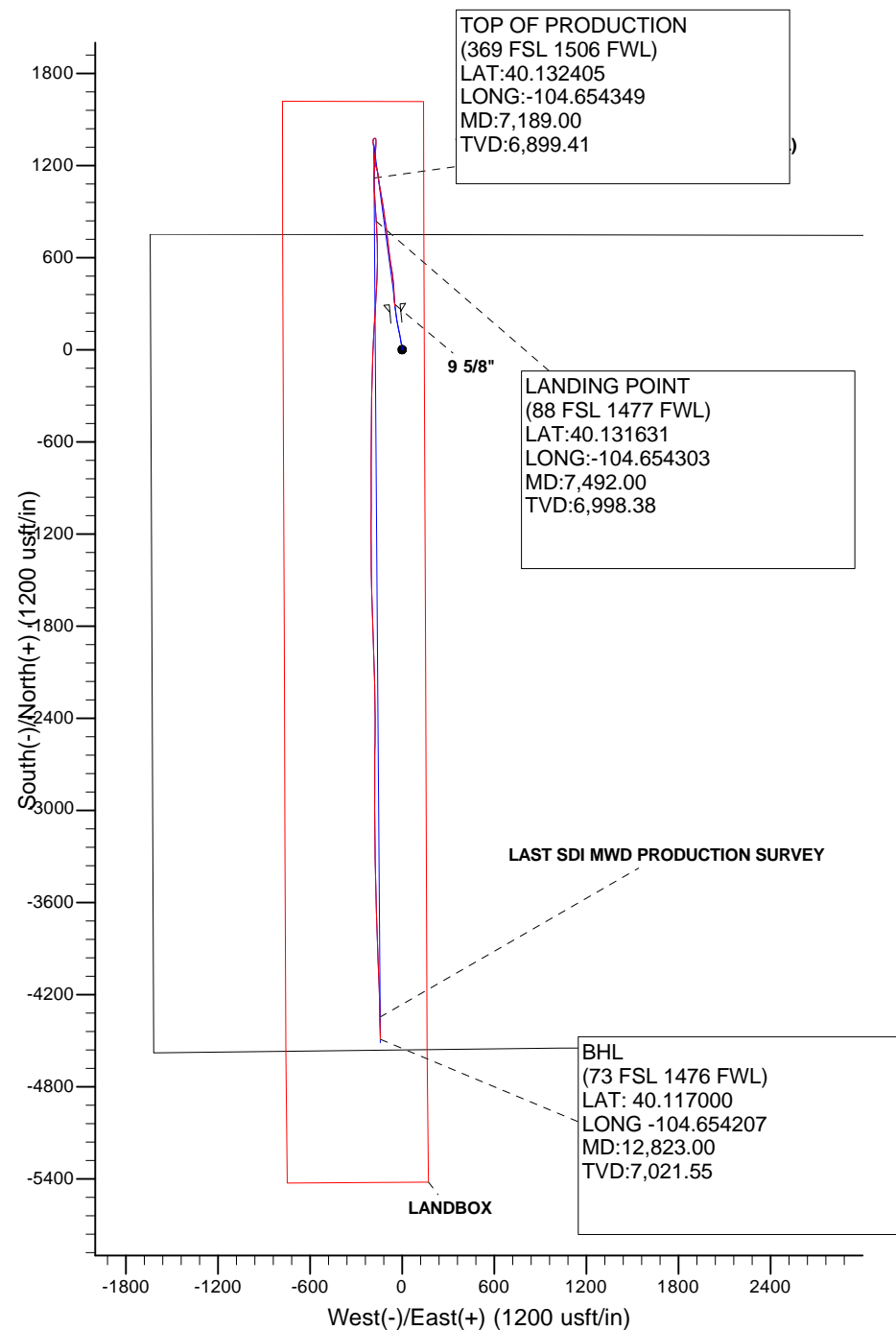
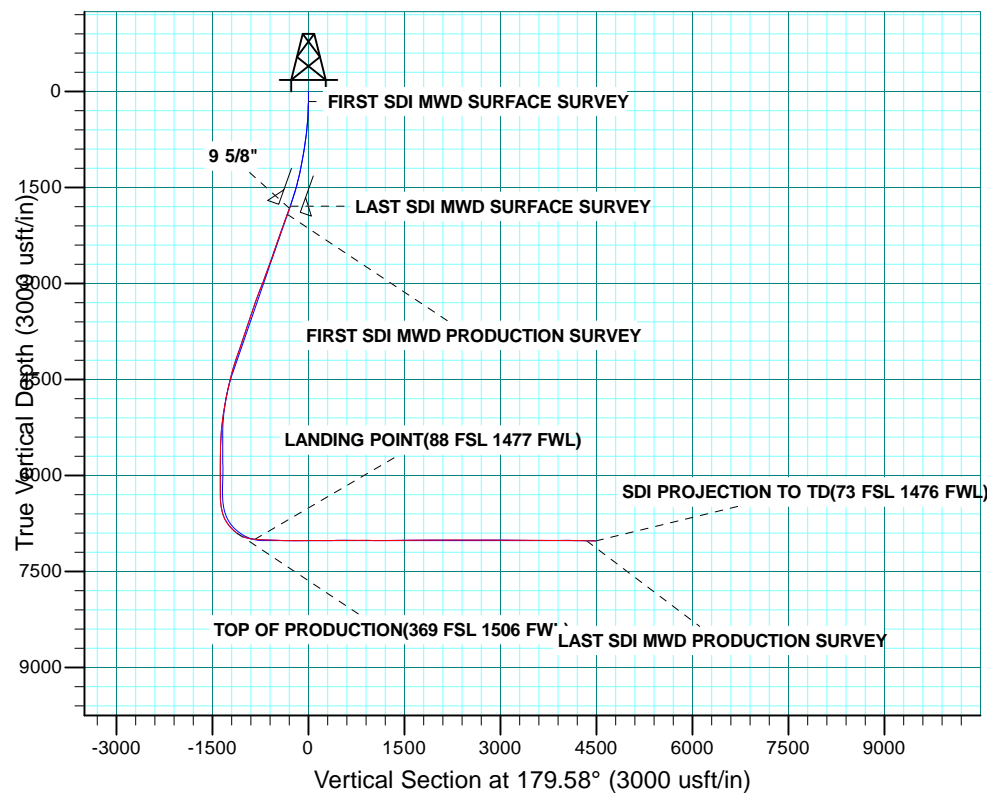


WELL DETAILS: POWERS 35N-22HZ					
GL 4883 & KB 20 @ 4903.00usft (PRECISION 461)					
+N/-S	+E/-W	Northing	Easting	Latitude	Longitude
0.00	0.00	14574017.92	1737216.03	40.129333	-104.653697

PROJECT DETAILS: WELD-NAD83-UTMFT13N	
Geodetic System:	Universal Transverse Mercator (US Survey Feet)
Datum:	North American Datum 1983
Ellipsoid:	GRS 1980
Zone:	Zone 13N (108 W to 102 W)
Location:	
System Datum:	Mean Sea Level



<b>Company:</b>	US ROCKIES WATTENBERG PLANNING	<b>Local Co-ordinate Reference:</b>	Well POWERS 35N-22HZ
<b>Project:</b>	WELD-NAD83-UTMFT13N	<b>TVD Reference:</b>	GL 4883 & KB 20 @ 4903.00usft (PRECISION 461)
<b>Site:</b>	2N-65W-22 Powers 3-22 Pad	<b>MD Reference:</b>	GL 4883 & KB 20 @ 4903.00usft (PRECISION 461)
<b>Well:</b>	POWERS 35N-22HZ	<b>North Reference:</b>	True
<b>Wellbore:</b>	Plan A	<b>Survey Calculation Method:</b>	Minimum Curvature
<b>Design:</b>	OH	<b>Database:</b>	Denver Sales

<b>Project</b>	WELD-NAD83-UTMFT13N		
<b>Map System:</b>	Universal Transverse Mercator (US Survey Feet)	<b>System Datum:</b>	Mean Sea Level
<b>Geo Datum:</b>	North American Datum 1983		
<b>Map Zone:</b>	Zone 13N (108 W to 102 W)		

Site	2N-65W-22 Powers 3-22 Pad				
Site Position:		Northing:	14,574,017.80 usft	Latitude:	40.129333
From:	Lat/Long	Easting:	1,737,186.12 usft	Longitude:	-104.653804
Position Uncertainty:	0.00 usft	Slot Radius:	13.200 in	Grid Convergence:	0.22 °

Well	POWERS 35N-22HZ					
Well Position	+N/-S	0.00 usft	Northing:	14,574,017.91 usft	Latitude:	40.129333
	+E/-W	0.00 usft	Easting:	1,737,216.03 usft	Longitude:	-104.653697
Position Uncertainty		3.28 usft	Wellhead Elevation:	0.00 usft	Ground Level:	4,883.00 usft

<b>Wellbore</b>	Plan A				
<b>Magnetics</b>	<b>Model Name</b>	<b>Sample Date</b>	<b>Declination (°)</b>	<b>Dip Angle (°)</b>	<b>Field Strength (nT)</b>
	HDGM	8/17/2015	8.40	66.67	52,502

<b>Design</b>	OH				
<b>Audit Notes:</b>					
<b>Version:</b>	1.0	<b>Phase:</b>	ACTUAL	<b>Tie On Depth:</b>	0.00
<b>Vertical Section:</b>	<b>Depth From (TVD) (usft)</b>	<b>+N/-S (usft)</b>	<b>+E/-W (usft)</b>	<b>Direction (°)</b>	
	0.00	0.00	0.00	179.58	

<b>Survey Program</b>	<b>Date</b>	10/6/2015			
<b>From (usft)</b>	<b>To (usft)</b>	<b>Survey (Wellbore)</b>	<b>Tool Name</b>	<b>Description</b>	
13.00	1,824.00	SDI MWD SURFACE SURVERYS (Plan A	APC_ISCWSA REV 2 MWD	Fixed:v2:standard declination	
1,959.00	12,823.00	Survey #2 SDI MWD PRODUCTION (Plan	APC_ISCWSA REV 2 MWD+	Fixed:v2:crustal field declination	

<b>Survey</b>										
<b>Measured Depth (usft)</b>	<b>Inclination (°)</b>	<b>Azimuth (°)</b>	<b>Vertical Depth (usft)</b>	<b>+N/-S (usft)</b>	<b>+E/-W (usft)</b>	<b>Vertical Section (usft)</b>	<b>Dogleg Rate (°/100usft)</b>	<b>Build Rate (°/100usft)</b>	<b>Turn Rate (°/100usft)</b>	
0.00	0.00	0.00	0.00	0.00	0.00	0.00	0.00	0.00	0.00	
13.00	0.00	0.00	13.00	0.00	0.00	0.00	0.00	0.00	0.00	
159.00	0.78	38.79	159.00	0.77	0.62	-0.77	0.53	0.53	0.00	
<b>FIRST SDI MWD SURFACE SURVEY</b>										
249.00	1.19	344.24	248.98	2.15	0.75	-2.15	1.08	0.46	-60.61	
341.00	2.48	352.61	340.93	5.04	0.24	-5.04	1.43	1.40	9.10	
431.00	4.07	347.88	430.79	10.10	-0.68	-10.10	1.79	1.77	-5.26	
521.00	5.21	352.57	520.49	17.27	-1.88	-17.29	1.33	1.27	5.21	

<b>Company:</b>	US ROCKIES WATTENBERG PLANNING	<b>Local Co-ordinate Reference:</b>	Well POWERS 35N-22HZ
<b>Project:</b>	WELD-NAD83-UTMFT13N	<b>TVD Reference:</b>	GL 4883 & KB 20 @ 4903.00usft (PRECISION 461)
<b>Site:</b>	2N-65W-22 Powers 3-22 Pad	<b>MD Reference:</b>	GL 4883 & KB 20 @ 4903.00usft (PRECISION 461)
<b>Well:</b>	POWERS 35N-22HZ	<b>North Reference:</b>	True
<b>Wellbore:</b>	Plan A	<b>Survey Calculation Method:</b>	Minimum Curvature
<b>Design:</b>	OH	<b>Database:</b>	Denver Sales

Survey									
Measured Depth (usft)	Inclination (°)	Azimuth (°)	Vertical Depth (usft)	+N/-S (usft)	+E/-W (usft)	Vertical Section (usft)	Dogleg Rate (°/100usft)	Build Rate (°/100usft)	Turn Rate (°/100usft)
611.00	6.58	348.12	610.01	26.37	-3.47	-26.40	1.60	1.52	-4.94
701.00	7.83	349.52	699.30	37.45	-5.65	-37.49	1.40	1.39	1.56
791.00	8.56	349.62	788.38	50.06	-7.97	-50.12	0.81	0.81	0.11
881.00	8.91	352.11	877.34	63.56	-10.14	-63.63	0.57	0.39	2.77
971.00	9.01	350.85	966.24	77.42	-12.21	-77.51	0.24	0.11	-1.40
1,062.00	9.55	349.61	1,056.05	91.88	-14.71	-91.98	0.63	0.59	-1.36
1,152.00	11.13	345.73	1,144.58	107.64	-18.20	-107.77	1.92	1.76	-4.31
1,287.00	13.15	350.37	1,276.56	135.41	-23.98	-135.58	1.66	1.50	3.44
1,377.00	13.98	348.72	1,364.05	156.17	-27.82	-156.37	1.02	0.92	-1.83
1,467.00	15.00	349.18	1,451.19	178.27	-32.13	-178.50	1.14	1.13	0.51
1,557.00	16.24	350.32	1,537.86	202.12	-36.43	-202.38	1.42	1.38	1.27
1,647.00	17.76	352.54	1,623.93	228.13	-40.33	-228.42	1.84	1.69	2.47
1,737.00	18.06	353.39	1,709.56	255.60	-43.72	-255.91	0.44	0.33	0.94
1,824.00	19.19	353.82	1,792.01	283.21	-46.81	-283.55	1.31	1.30	0.49
LAST SDI MWD SURFACE SURVEY									
1,861.00	19.58	354.60	1,826.91	295.43	-48.05	-295.78	1.27	1.06	2.10
9 5/8"									
1,959.00	20.64	356.51	1,918.93	329.02	-50.65	-329.39	1.27	1.08	1.95
FIRST SDI MWD PRODUCTION SURVEY									
2,054.00	20.08	357.31	2,008.00	362.03	-52.43	-362.40	0.66	-0.59	0.84
2,149.00	19.28	356.46	2,097.45	393.97	-54.17	-394.36	0.89	-0.84	-0.89
2,244.00	20.58	355.11	2,186.76	426.26	-56.56	-426.67	1.45	1.37	-1.42
2,338.00	19.42	353.74	2,275.09	458.26	-59.67	-458.69	1.33	-1.23	-1.46
2,433.00	18.42	353.13	2,364.95	488.86	-63.19	-489.31	1.07	-1.05	-0.64
2,528.00	20.24	350.64	2,454.60	519.98	-67.66	-520.46	2.10	1.92	-2.62
2,624.00	18.91	348.85	2,545.05	551.63	-73.36	-552.15	1.52	-1.39	-1.86
2,718.00	19.82	352.87	2,633.73	582.39	-78.29	-582.95	1.72	0.97	4.28
2,908.00	20.09	353.14	2,812.32	646.75	-86.18	-647.36	0.15	0.14	0.14
3,004.00	20.04	352.26	2,902.50	679.42	-90.37	-680.06	0.32	-0.05	-0.92
3,099.00	22.43	354.29	2,991.04	713.59	-94.36	-714.26	2.63	2.52	2.14
3,194.00	21.69	352.87	3,079.09	749.04	-98.35	-749.74	0.96	-0.78	-1.49
3,289.00	20.45	352.23	3,167.73	782.90	-102.77	-783.64	1.33	-1.31	-0.67
3,385.00	18.67	350.89	3,258.19	814.70	-107.47	-815.46	1.91	-1.85	-1.40
3,479.00	19.89	352.19	3,346.92	845.39	-112.03	-846.19	1.38	1.30	1.38
3,575.00	19.02	353.38	3,437.44	877.11	-116.05	-877.94	1.00	-0.91	1.24
3,670.00	18.97	352.51	3,527.26	907.80	-119.85	-908.65	0.30	-0.05	-0.92
3,765.00	18.11	349.30	3,617.33	937.62	-124.60	-938.51	1.40	-0.91	-3.38
3,860.00	18.79	349.17	3,707.45	967.15	-130.22	-968.08	0.72	0.72	-0.14
3,955.00	19.20	351.39	3,797.28	997.63	-135.43	-998.59	0.87	0.43	2.34
4,051.00	19.26	351.01	3,887.92	1,028.87	-140.27	-1,029.87	0.14	0.06	-0.40
4,146.00	16.64	349.23	3,978.29	1,057.72	-145.26	-1,058.75	2.82	-2.76	-1.87
4,241.00	19.54	351.52	4,068.59	1,086.80	-150.14	-1,087.87	3.14	3.05	2.41

<b>Company:</b>	US ROCKIES WATTENBERG PLANNING	<b>Local Co-ordinate Reference:</b>	Well POWERS 35N-22HZ
<b>Project:</b>	WELD-NAD83-UTMFT13N	<b>TVD Reference:</b>	GL 4883 & KB 20 @ 4903.00usft (PRECISION 461)
<b>Site:</b>	2N-65W-22 Powers 3-22 Pad	<b>MD Reference:</b>	GL 4883 & KB 20 @ 4903.00usft (PRECISION 461)
<b>Well:</b>	POWERS 35N-22HZ	<b>North Reference:</b>	True
<b>Wellbore:</b>	Plan A	<b>Survey Calculation Method:</b>	Minimum Curvature
<b>Design:</b>	OH	<b>Database:</b>	Denver Sales

Survey										
Measured Depth (usft)	Inclination (°)	Azimuth (°)	Vertical Depth (usft)	+N/-S (usft)	+E/-W (usft)	Vertical Section (usft)	Dogleg Rate (°/100usft)	Build Rate (°/100usft)	Turn Rate (°/100usft)	
4,336.00	21.35	353.03	4,157.60	1,119.68	-154.59	-1,120.78	1.98	1.91	1.59	
4,431.00	18.82	349.82	4,246.82	1,151.93	-159.39	-1,153.07	2.90	-2.66	-3.38	
4,526.00	15.68	344.32	4,337.54	1,179.38	-165.57	-1,180.57	3.72	-3.31	-5.79	
4,621.00	15.09	340.72	4,429.14	1,203.42	-173.13	-1,204.65	1.18	-0.62	-3.79	
4,716.00	12.72	349.81	4,521.36	1,225.39	-179.06	-1,226.67	3.39	-2.49	9.57	
4,811.00	13.07	356.06	4,613.97	1,246.40	-181.65	-1,247.70	1.51	0.37	6.58	
4,906.00	12.40	356.37	4,706.63	1,267.30	-183.03	-1,268.60	0.71	-0.71	0.33	
5,001.00	11.19	356.84	4,799.62	1,286.68	-184.19	-1,288.00	1.28	-1.27	0.49	
5,097.00	9.85	357.53	4,894.00	1,304.19	-185.05	-1,305.51	1.40	-1.40	0.72	
5,191.00	8.97	355.31	4,986.74	1,319.52	-186.00	-1,320.85	1.01	-0.94	-2.36	
5,286.00	7.93	351.83	5,080.71	1,333.39	-187.54	-1,334.73	1.22	-1.09	-3.66	
5,382.00	7.52	354.43	5,175.84	1,346.20	-189.09	-1,347.55	0.56	-0.43	2.71	
5,476.00	4.54	1.47	5,269.31	1,356.04	-189.59	-1,357.40	3.26	-3.17	7.49	
5,570.00	3.57	7.51	5,363.07	1,362.66	-189.11	-1,364.01	1.13	-1.03	6.43	
5,666.00	3.37	4.23	5,458.89	1,368.44	-188.51	-1,369.79	0.29	-0.21	-3.42	
5,760.00	2.09	34.02	5,552.79	1,372.62	-187.35	-1,373.95	1.99	-1.36	31.69	
5,856.00	1.44	69.00	5,648.75	1,374.50	-185.24	-1,375.82	1.28	-0.68	36.44	
5,951.00	1.34	64.14	5,743.72	1,375.41	-183.13	-1,376.72	0.16	-0.11	-5.12	
6,045.00	1.04	88.29	5,837.70	1,375.92	-181.29	-1,377.21	0.61	-0.32	25.69	
6,138.00	1.38	101.34	5,930.68	1,375.72	-179.35	-1,377.00	0.47	0.37	14.03	
6,232.00	0.93	77.40	6,024.66	1,375.67	-177.49	-1,376.93	0.69	-0.48	-25.47	
6,327.00	0.98	83.18	6,119.65	1,375.93	-175.93	-1,377.18	0.11	0.05	6.08	
6,422.00	0.68	106.10	6,214.64	1,375.87	-174.59	-1,377.11	0.47	-0.32	24.13	
6,516.00	1.08	80.39	6,308.63	1,375.86	-173.18	-1,377.10	0.59	0.43	-27.35	
6,611.00	3.79	169.30	6,403.55	1,372.93	-171.71	-1,374.15	4.13	2.85	93.59	
6,706.00	10.53	179.07	6,497.76	1,361.15	-170.99	-1,362.37	7.18	7.09	10.28	
6,800.00	15.86	180.71	6,589.24	1,339.70	-171.00	-1,340.92	5.68	5.67	1.74	
6,895.00	24.73	183.80	6,678.26	1,306.83	-172.49	-1,308.06	9.40	9.34	3.25	
6,989.00	35.38	183.37	6,759.50	1,259.91	-175.40	-1,261.16	11.33	11.33	-0.46	
7,084.00	45.30	183.76	6,831.82	1,198.61	-179.24	-1,199.89	10.45	10.44	0.41	
7,178.00	53.50	181.04	6,892.95	1,127.37	-182.12	-1,128.67	8.99	8.72	-2.89	
7,189.00	54.56	180.63	6,899.41	1,118.47	-182.25	-1,119.77	10.06	9.60	-3.69	
TOP OF PRODUCTION(369 FSL 1506 FWL)										
7,273.00	62.66	177.84	6,943.14	1,046.84	-181.22	-1,048.14	10.06	9.65	-3.33	
7,368.00	74.16	176.36	6,978.04	958.77	-176.71	-960.04	12.19	12.11	-1.56	
7,462.00	84.25	176.60	6,995.62	866.73	-171.05	-867.96	10.74	10.73	0.26	
7,492.00	85.19	176.81	6,998.38	836.91	-169.34	-838.12	3.22	3.15	0.70	
LANDING POINT(88 FSL 1477 FWL)										
7,557.00	87.24	177.26	7,002.67	772.14	-165.98	-773.33	3.22	3.15	0.69	
7,652.00	86.87	177.95	7,007.55	677.35	-162.02	-678.52	0.82	-0.39	0.73	
7,746.00	88.49	180.73	7,011.35	583.44	-160.94	-584.61	3.42	1.72	2.96	
7,840.00	88.55	182.27	7,013.78	489.51	-163.40	-490.69	1.64	0.06	1.64	

<b>Company:</b>	US ROCKIES WATTENBERG PLANNING	<b>Local Co-ordinate Reference:</b>	Well POWERS 35N-22HZ
<b>Project:</b>	WELD-NAD83-UTMFT13N	<b>TVD Reference:</b>	GL 4883 & KB 20 @ 4903.00usft (PRECISION 461)
<b>Site:</b>	2N-65W-22 Powers 3-22 Pad	<b>MD Reference:</b>	GL 4883 & KB 20 @ 4903.00usft (PRECISION 461)
<b>Well:</b>	POWERS 35N-22HZ	<b>North Reference:</b>	True
<b>Wellbore:</b>	Plan A	<b>Survey Calculation Method:</b>	Minimum Curvature
<b>Design:</b>	OH	<b>Database:</b>	Denver Sales

Survey										
Measured Depth (usft)	Inclination (°)	Azimuth (°)	Vertical Depth (usft)	+N/-S (usft)	+E/-W (usft)	Vertical Section (usft)	Dogleg Rate (°/100usft)	Build Rate (°/100usft)	Turn Rate (°/100usft)	
7,935.00	89.13	183.12	7,015.71	394.63	-167.86	-395.85	1.08	0.61	0.89	
8,029.00	89.33	183.27	7,016.97	300.79	-173.10	-302.05	0.27	0.21	0.16	
8,124.00	88.89	184.44	7,018.44	206.02	-179.49	-207.33	1.32	-0.46	1.23	
8,219.00	90.37	182.51	7,019.06	111.20	-185.24	-112.56	2.56	1.56	-2.03	
8,314.00	91.28	182.89	7,017.69	16.32	-189.72	-17.71	1.04	0.96	0.40	
8,409.00	89.97	181.25	7,016.65	-78.61	-193.15	77.19	2.21	-1.38	-1.73	
8,503.00	89.60	180.98	7,017.01	-172.59	-194.98	171.16	0.49	-0.39	-0.29	
8,598.00	90.17	181.18	7,017.20	-267.57	-196.77	266.12	0.64	0.60	0.21	
8,693.00	91.68	181.42	7,015.66	-362.53	-198.92	361.07	1.61	1.59	0.25	
8,788.00	90.67	180.91	7,013.72	-457.49	-200.86	456.01	1.19	-1.06	-0.54	
8,883.00	88.99	179.63	7,014.00	-552.49	-201.30	550.99	2.22	-1.77	-1.35	
8,978.00	89.43	180.42	7,015.31	-647.48	-201.35	645.98	0.95	0.46	0.83	
9,073.00	90.37	180.32	7,015.47	-742.47	-201.96	740.97	1.00	0.99	-0.11	
9,168.00	90.57	180.11	7,014.69	-837.47	-202.32	835.96	0.31	0.21	-0.22	
9,263.00	89.36	179.84	7,014.75	-932.47	-202.27	930.96	1.31	-1.27	-0.28	
9,358.00	89.09	180.22	7,016.04	-1,027.46	-202.32	1,025.95	0.49	-0.28	0.40	
9,453.00	88.76	180.37	7,017.82	-1,122.44	-202.81	1,120.92	0.38	-0.35	0.16	
9,547.00	91.04	179.59	7,017.98	-1,216.43	-202.78	1,214.91	2.56	2.43	-0.83	
9,642.00	91.75	179.93	7,015.67	-1,311.40	-202.38	1,309.88	0.83	0.75	0.36	
9,737.00	90.60	178.94	7,013.72	-1,406.37	-201.44	1,404.86	1.60	-1.21	-1.04	
9,831.00	90.67	179.36	7,012.68	-1,500.36	-200.05	1,498.85	0.45	0.07	0.45	
9,926.00	90.44	178.02	7,011.76	-1,595.33	-197.88	1,593.83	1.43	-0.24	-1.41	
10,022.00	90.97	178.80	7,010.58	-1,691.28	-195.22	1,689.81	0.98	0.55	0.81	
10,116.00	89.90	177.82	7,009.87	-1,785.24	-192.44	1,783.78	1.54	-1.14	-1.04	
10,211.00	89.73	177.89	7,010.17	-1,880.17	-188.89	1,878.73	0.19	-0.18	0.07	
10,307.00	89.93	178.01	7,010.46	-1,976.11	-185.45	1,974.69	0.24	0.21	0.13	
10,402.00	90.67	177.86	7,009.96	-2,071.04	-182.03	2,069.65	0.79	0.78	-0.16	
10,497.00	89.66	179.03	7,009.69	-2,166.00	-179.45	2,164.63	1.63	-1.06	1.23	
10,592.00	90.71	178.51	7,009.38	-2,260.98	-177.41	2,259.62	1.23	1.11	-0.55	
10,686.00	89.26	180.52	7,009.40	-2,354.97	-176.62	2,353.61	2.64	-1.54	2.14	
10,781.00	89.97	180.04	7,010.04	-2,449.97	-177.08	2,448.60	0.90	0.75	-0.51	
10,875.00	90.67	180.83	7,009.52	-2,543.96	-177.80	2,542.59	1.12	0.74	0.84	
10,970.00	89.06	179.98	7,009.74	-2,638.95	-178.47	2,637.57	1.92	-1.69	-0.89	
11,065.00	89.36	180.03	7,011.05	-2,733.94	-178.48	2,732.56	0.32	0.32	0.05	
11,160.00	90.10	180.12	7,011.50	-2,828.94	-178.60	2,827.56	0.78	0.78	0.09	
11,254.00	91.04	180.52	7,010.56	-2,922.94	-179.12	2,921.54	1.09	1.00	0.43	
11,349.00	89.43	179.86	7,010.17	-3,017.93	-179.44	3,016.53	1.83	-1.69	-0.69	
11,444.00	90.17	179.54	7,010.51	-3,112.93	-178.94	3,111.53	0.85	0.78	-0.34	
11,539.00	88.89	179.17	7,011.28	-3,207.92	-177.87	3,206.53	1.40	-1.35	-0.39	
11,634.00	89.53	179.29	7,012.59	-3,302.90	-176.60	3,301.51	0.69	0.67	0.13	
11,729.00	90.17	178.35	7,012.84	-3,397.88	-174.64	3,396.50	1.20	0.67	-0.99	
11,824.00	89.03	178.45	7,013.51	-3,492.84	-171.99	3,491.48	1.20	-1.20	0.11	

<b>Company:</b>	US ROCKIES WATTENBERG PLANNING	<b>Local Co-ordinate Reference:</b>	Well POWERS 35N-22HZ
<b>Project:</b>	WELD-NAD83-UTMFT13N	<b>TVD Reference:</b>	GL 4883 & KB 20 @ 4903.00usft (PRECISION 461)
<b>Site:</b>	2N-65W-22 Powers 3-22 Pad	<b>MD Reference:</b>	GL 4883 & KB 20 @ 4903.00usft (PRECISION 461)
<b>Well:</b>	POWERS 35N-22HZ	<b>North Reference:</b>	True
<b>Wellbore:</b>	Plan A	<b>Survey Calculation Method:</b>	Minimum Curvature
<b>Design:</b>	OH	<b>Database:</b>	Denver Sales

Survey										
Measured Depth (usft)	Inclination (°)	Azimuth (°)	Vertical Depth (usft)	+N/-S (usft)	+E/-W (usft)	Vertical Section (usft)	Dogleg Rate (°/100usft)	Build Rate (°/100usft)	Turn Rate (°/100usft)	
11,918.00	88.93	178.44	7,015.18	-3,586.79	-169.44	3,585.45	0.11	-0.11	-0.01	
12,013.00	89.36	178.82	7,016.60	-3,681.75	-167.17	3,680.42	0.60	0.45	0.40	
12,108.00	89.93	178.03	7,017.19	-3,776.71	-164.55	3,775.40	1.03	0.60	-0.83	
12,203.00	91.88	178.00	7,015.69	-3,871.64	-161.26	3,870.35	2.05	2.05	-0.03	
12,299.00	89.93	177.24	7,014.17	-3,967.54	-157.28	3,966.28	2.18	-2.03	-0.79	
12,394.00	89.66	177.85	7,014.51	-4,062.45	-153.21	4,061.21	0.70	-0.28	0.64	
12,489.00	88.72	177.91	7,015.85	-4,157.37	-149.70	4,156.16	0.99	-0.99	0.06	
12,584.00	88.96	178.98	7,017.78	-4,252.32	-147.12	4,251.12	1.15	0.25	1.13	
12,680.00	89.13	178.84	7,019.38	-4,348.28	-145.29	4,347.10	0.23	0.18	-0.15	
LAST SDI MWD PRODUCTION SURVEY										
12,823.00	89.13	178.84	7,021.55	-4,491.24	-142.40	4,490.07	0.00	0.00	0.00	
SDI PROJECTION TO TD(73 FSL 1476 FWL)										

Casing Points					
Measured Depth (usft)	Vertical Depth (usft)	Name	Casing Diameter (in)	Hole Diameter (in)	
1,861.00	1,826.91	9 5/8"	9.625	13.500	

Design Annotations					
Measured Depth (usft)	Vertical Depth (usft)	Local Coordinates		Comment	
		+N/-S (usft)	+E/-W (usft)		
159.00	159.00	0.77	0.62	FIRST SDI MWD SURFACE SURVEY	
1,824.00	1,792.01	283.21	-46.81	LAST SDI MWD SURFACE SURVEY	
1,959.00	1,918.93	329.02	-50.65	FIRST SDI MWD PRODUCTION SURVEY	
7,189.00	6,899.41	1,118.47	-182.25	TOP OF PRODUCTION(369 FSL 1506 FWL)	
7,492.00	6,998.38	836.91	-169.34	LANDING POINT(88 FSL 1477 FWL)	
12,680.00	7,019.38	-4,348.28	-145.29	LAST SDI MWD PRODUCTION SURVEY	
12,823.00	7,021.55	-4,491.24	-142.40	SDI PROJECTION TO TD(73 FSL 1476 FWL)	

Checked By: _____	Approved By: _____	Date: _____
-------------------	--------------------	-------------