

EXTRACTION OIL & GAS

WELD COUNTY, COLORADO (NAD 83)

SW SE SEC 36 T6N R66W 6th P.M.

CS-KINKADE C7-1-13

ORIGINAL WELLBORE

27 June, 2015

Plan: PROPOSAL #1



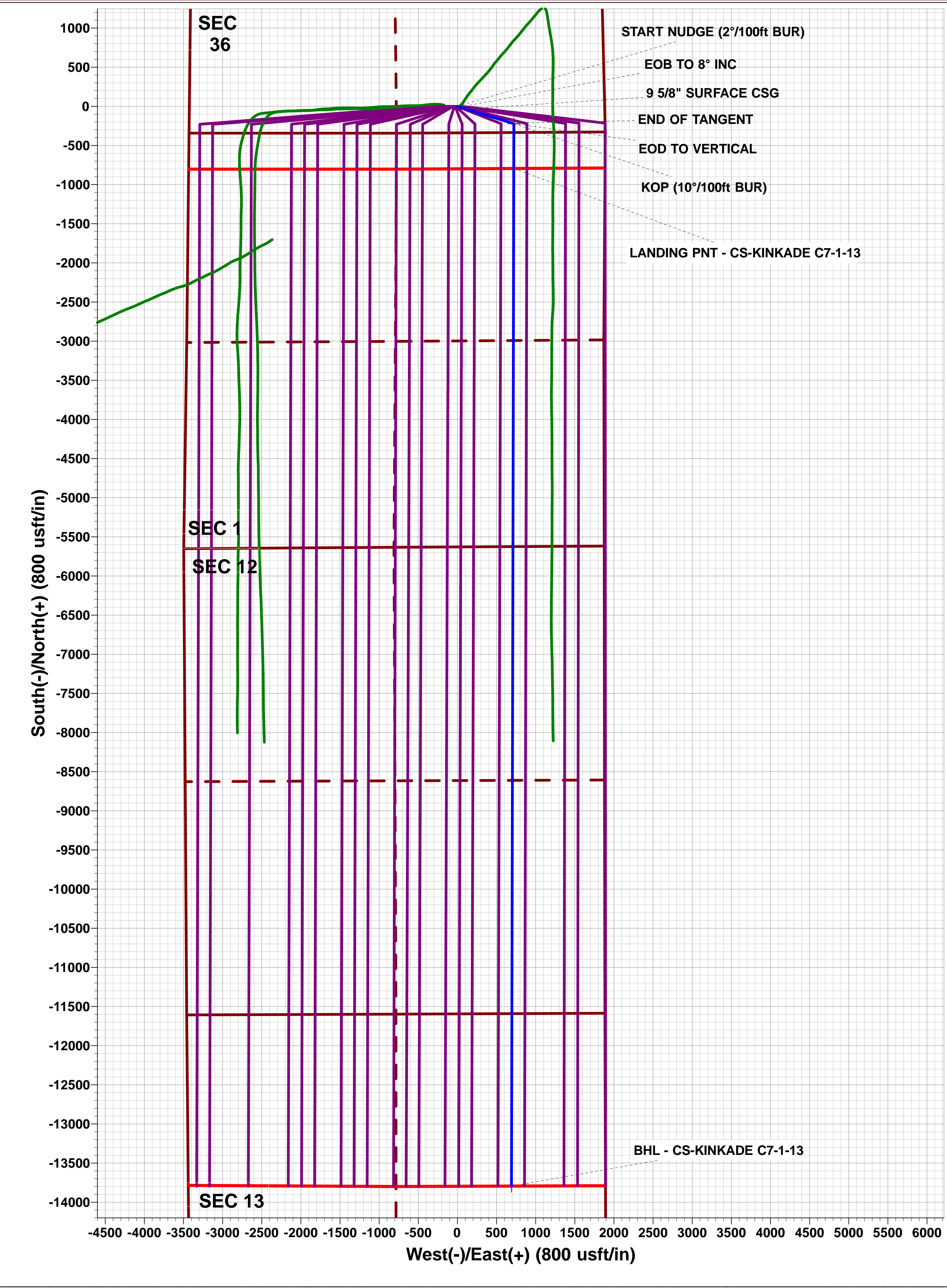
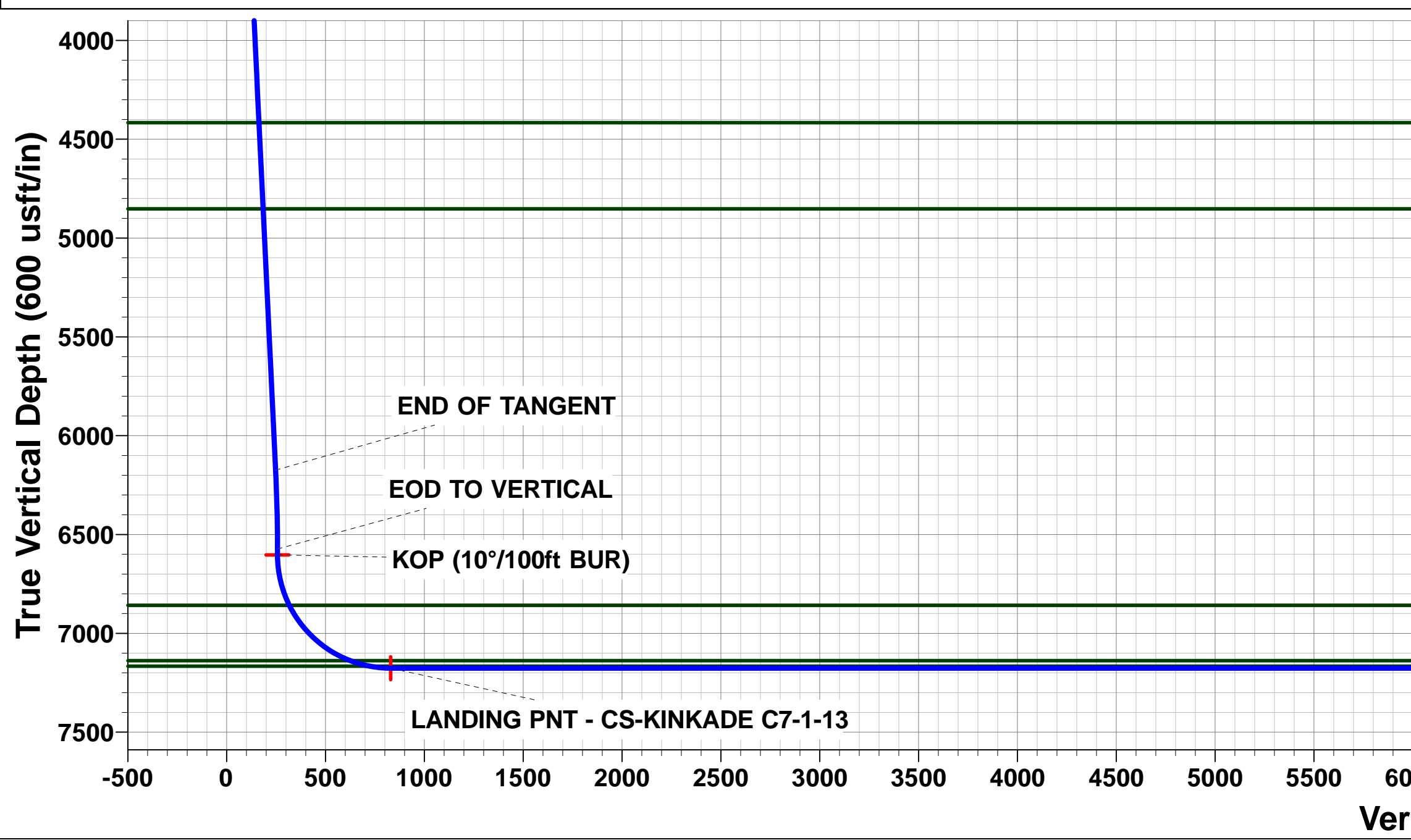
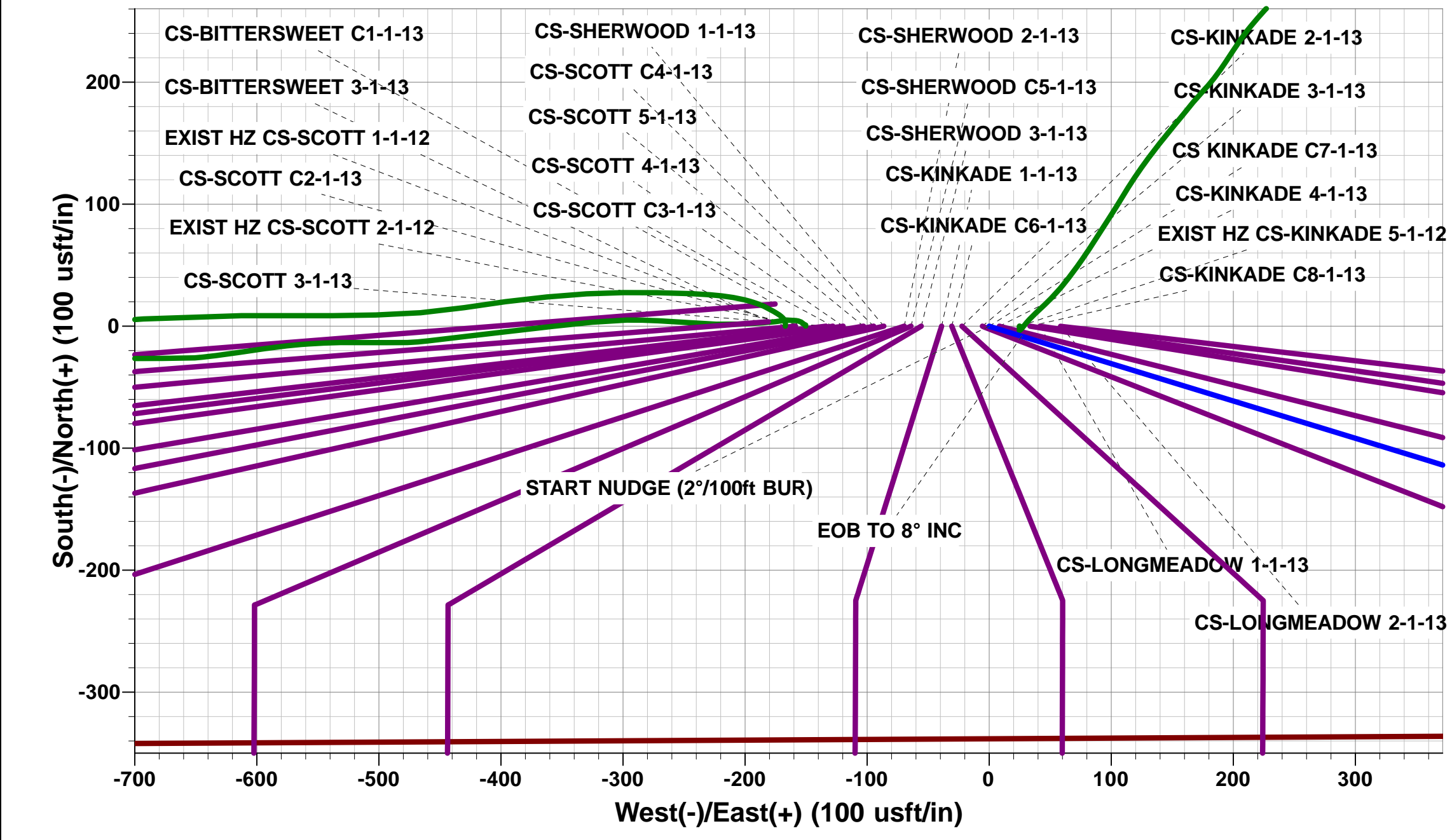
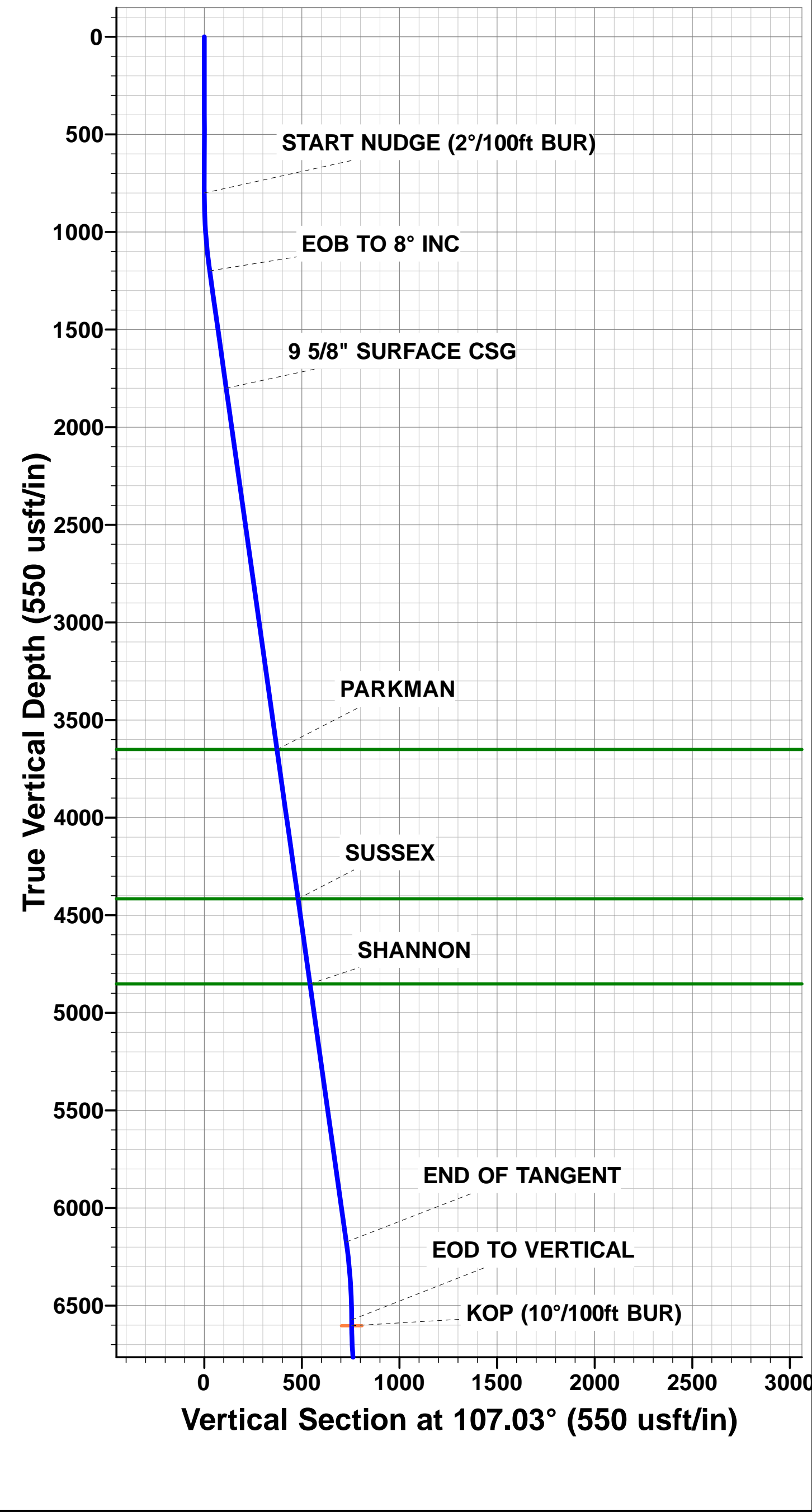


Project: WELD COUNTY, COLORADO (NAD 83)
Site: SW SE SEC 36 T6N R66W 6th P.M.
Well: CS-KINKADE C7-1-13
Wellbore: ORIGINAL WELLBORE
Design: PROPOSAL #1

ANNOTATIONS									
TVD	MD	Inc	Azi	+N/-S	+E/-W	VSect	Dep	Annotation	
800.0	800.0	0.00	0.00	0.0	0.0	0.0	0.0	START NUDGE (2°/100ft BUR)	
1198.9	1200.2	8.00	107.03	-8.2	26.7	9.5	27.9	EOB TO 8° INC	
1800.0	1807.2	8.00	107.03	-32.9	107.5	38.3	112.4	9 5/8" SURFACE CSG	
6174.1	6224.3	8.00	107.03	-213.0	695.6	247.6	727.5	END OF TANGENT	
6573.0	6624.5	0.00	0.00	-221.2	722.3	257.0	755.4	EOD TO VERTICAL	
6603.0	6654.5	0.00	0.00	-221.2	722.3	257.0	755.4	KOP (10°/100ft BUR)	
7176.0	7554.6	90.00	180.13	-794.2	721.0	829.3	1328.4	LANDING PNT - CS-KINKADE C7-1-13	
7176.0	20553.3	90.00	180.14	-13792.8	690.7	13810.1	14327.1	BHL - CS-KINKADE C7-1-13	

PROPOSED LOCAL COORDINATES:
SHL: 339ft FSL & 1880ft FEL Sec 36
LANDING PNT: 460ft FNL & 1166ft FEL Sec 1
BHL: 2201ft FNL & 1204ft FEL Sec 13

WELLBORE TARGET DETAILS (LAT/LONG)					
Name	TVD	+N/-S	+E/-W	Latitude	Longitude
KOP - CS-KINKADE C7-1-13	6603.0	-221.2	722.3	40.437763	-104.720035
BHL - CS-KINKADE C7-1-13	7176.0	-13792.8	690.7	40.400510	-104.720150
LANDING PNT - CS-KINKADE C7-1-13	7176.0	-794.2	721.0	40.436190	-104.720040



Planning Report



Database:	EDM 5000.1 Single User Db	Local Co-ordinate Reference:	Well CS-KINKADE C7-1-13
Company:	EXTRACTION OIL & GAS	TVD Reference:	KB-EST @ 4681.0usft (SAV 802)
Project:	WELD COUNTY, COLORADO (NAD 83)	MD Reference:	KB-EST @ 4681.0usft (SAV 802)
Site:	SW SE SEC 36 T6N R66W 6th P.M.	North Reference:	True
Well:	CS-KINKADE C7-1-13	Survey Calculation Method:	Minimum Curvature
Wellbore:	ORIGINAL WELLBORE		
Design:	PROPOSAL #1		

Project	WELD COUNTY, COLORADO (NAD 83)		
Map System:	US State Plane 1983	System Datum:	Mean Sea Level
Geo Datum:	North American Datum 1983		
Map Zone:	Colorado Northern Zone		Using geodetic scale factor

Site	SW SE SEC 36 T6N R66W 6th P.M.		
Site Position:		Northing:	1,403,485.52 usft
From:	Lat/Long	Easting:	3,216,213.28 usft
Position Uncertainty:	0.0 usft	Slot Radius:	1.10000ft
		Latitude:	40.438370
		Longitude:	-104.723230
		Grid Convergence:	0.50 °

Well	CS-KINKADE C7-1-13		
Well Position	+N/-S	0.0 usft	Northing:
	+E/-W	167.0 usft	Easting:
Position Uncertainty	0.0 usft		Wellhead Elevation:
			Latitude:
			Longitude:
			Ground Level:

Wellbore	ORIGINAL WELLBORE				
Magnetics	Model Name	Sample Date	Declination (°)	Dip Angle (°)	Field Strength (nT)
	IGRF2015	23/06/2015	8.40	66.94	52,644

Design	PROPOSAL #1			
Audit Notes:				
Version:	Phase:	PROTOTYPE	Tie On Depth:	0.0
Vertical Section:	Depth From (TVD) (usft)	+N/-S (usft)	+E/-W (usft)	Direction (°)
	0.0	0.0	0.0	177.13

Plan Sections											
MD (usft)	Inc (°)	Azi (°)	Vertical Depth	SS (usft)	+N/-S (usft)	+E/-W (usft)	Dogleg Rate (°/100usf)	Build Rate (°/100usf)	Turn Rate (°/100usf)	TFO (°)	Target
0.0	0.00	0.00	0.0	-4,681.0	0.0	0.0	0.00	0.00	0.00	0.00	
800.0	0.00	0.00	800.0	-3,881.0	0.0	0.0	0.00	0.00	0.00	0.00	
1,200.2	8.00	107.03	1,198.9	-3,482.1	-8.2	26.7	2.00	2.00	0.00	107.03	
6,224.3	8.00	107.03	6,174.1	1,493.1	-213.0	695.6	0.00	0.00	0.00	0.00	
6,624.5	0.00	0.00	6,573.0	1,892.0	-221.2	722.3	2.00	-2.00	0.00	180.00	
6,654.5	0.00	0.00	6,603.0	1,922.0	-221.2	722.3	0.00	0.00	0.00	0.00	KOP - CS-KINKADI
7,554.6	90.00	180.13	7,176.0	2,495.0	-794.2	721.0	10.00	10.00	-19.98	180.13	LANDING PNT - CS
20,553.3	90.00	180.14	7,176.0	2,495.0	-13,792.8	690.7	0.00	0.00	0.00	53.22	BHL - CS-KINKADE

Database:	EDM 5000.1 Single User Db	Local Co-ordinate Reference:	Well CS-KINKADE C7-1-13
Company:	EXTRACTION OIL & GAS	TVD Reference:	KB-EST @ 4681.0usft (SAV 802)
Project:	WELD COUNTY, COLORADO (NAD 83)	MD Reference:	KB-EST @ 4681.0usft (SAV 802)
Site:	SW SE SEC 36 T6N R66W 6th P.M.	North Reference:	True
Well:	CS-KINKADE C7-1-13	Survey Calculation Method:	Minimum Curvature
Wellbore:	ORIGINAL WELLBORE		
Design:	PROPOSAL #1		

Planned Survey

MD (usft)	Inc (°)	Azi (°)	TVD (usft)	SS (usft)	+N/-S (usft)	+E/-W (usft)	Vertical Section (usft)	Dogleg Rate (°/100usft)	Build Rate (°/100usft)	Turn Rate (°/100usft)
0.0	0.00	0.00	0.0	4,681.00	0.0	0.0	0.0	0.00	0.00	0.00
100.0	0.00	0.00	100.0	4,581.00	0.0	0.0	0.0	0.00	0.00	0.00
200.0	0.00	0.00	200.0	4,481.00	0.0	0.0	0.0	0.00	0.00	0.00
300.0	0.00	0.00	300.0	4,381.00	0.0	0.0	0.0	0.00	0.00	0.00
400.0	0.00	0.00	400.0	4,281.00	0.0	0.0	0.0	0.00	0.00	0.00
500.0	0.00	0.00	500.0	4,181.00	0.0	0.0	0.0	0.00	0.00	0.00
600.0	0.00	0.00	600.0	4,081.00	0.0	0.0	0.0	0.00	0.00	0.00
700.0	0.00	0.00	700.0	3,981.00	0.0	0.0	0.0	0.00	0.00	0.00
START NUDGE (2°/100ft BUR)										
800.0	0.00	0.00	800.0	3,881.00	0.0	0.0	0.0	0.00	0.00	0.00
900.0	2.00	107.03	900.0	3,781.02	-0.5	1.7	0.6	2.00	2.00	0.00
1,000.0	4.00	107.03	999.8	3,681.16	-2.0	6.7	2.4	2.00	2.00	0.00
1,100.0	6.00	107.03	1,099.5	3,581.55	-4.6	15.0	5.3	2.00	2.00	0.00
1,200.0	8.00	107.03	1,198.7	3,482.30	-8.2	26.7	9.5	2.00	2.00	0.00
EOB TO 8° INC										
1,200.2	8.00	107.03	1,198.9	3,482.09	-8.2	26.7	9.5	2.00	2.00	0.00
1,300.0	8.00	107.03	1,297.7	3,383.27	-12.2	40.0	14.2	0.00	0.00	0.00
1,400.0	8.00	107.03	1,396.8	3,284.25	-16.3	53.3	19.0	0.00	0.00	0.00
1,500.0	8.00	107.03	1,495.8	3,185.22	-20.4	66.6	23.7	0.00	0.00	0.00
1,600.0	8.00	107.03	1,594.8	3,086.20	-24.5	79.9	28.4	0.00	0.00	0.00
1,700.0	8.00	107.03	1,693.8	2,987.17	-28.6	93.2	33.2	0.00	0.00	0.00
1,800.0	8.00	107.03	1,792.9	2,888.14	-32.6	106.5	37.9	0.00	0.00	0.00
9 5/8" SURFACE CSG										
1,807.2	8.00	107.03	1,800.0	2,881.00	-32.9	107.5	38.3	0.00	0.00	0.00
1,900.0	8.00	107.03	1,891.9	2,789.12	-36.7	119.9	42.7	0.00	0.00	0.00
2,000.0	8.00	107.03	1,990.9	2,690.09	-40.8	133.2	47.4	0.00	0.00	0.00
2,100.0	8.00	107.03	2,089.9	2,591.07	-44.9	146.5	52.1	0.00	0.00	0.00
2,200.0	8.00	107.03	2,189.0	2,492.04	-48.9	159.8	56.9	0.00	0.00	0.00
2,300.0	8.00	107.03	2,288.0	2,393.01	-53.0	173.1	61.6	0.00	0.00	0.00
2,400.0	8.00	107.03	2,387.0	2,293.99	-57.1	186.4	66.3	0.00	0.00	0.00
2,500.0	8.00	107.03	2,486.0	2,194.96	-61.2	199.7	71.1	0.00	0.00	0.00
2,600.0	8.00	107.03	2,585.1	2,095.94	-65.2	213.1	75.8	0.00	0.00	0.00
2,700.0	8.00	107.03	2,684.1	1,996.91	-69.3	226.4	80.6	0.00	0.00	0.00
2,800.0	8.00	107.03	2,783.1	1,897.89	-73.4	239.7	85.3	0.00	0.00	0.00
2,900.0	8.00	107.03	2,882.1	1,798.86	-77.5	253.0	90.0	0.00	0.00	0.00
3,000.0	8.00	107.03	2,981.2	1,699.83	-81.6	266.3	94.8	0.00	0.00	0.00
3,100.0	8.00	107.03	3,080.2	1,600.81	-85.6	279.6	99.5	0.00	0.00	0.00
3,200.0	8.00	107.03	3,179.2	1,501.78	-89.7	292.9	104.3	0.00	0.00	0.00
3,300.0	8.00	107.03	3,278.2	1,402.76	-93.8	306.3	109.0	0.00	0.00	0.00
3,400.0	8.00	107.03	3,377.3	1,303.73	-97.9	319.6	113.7	0.00	0.00	0.00
3,500.0	8.00	107.03	3,476.3	1,204.71	-101.9	332.9	118.5	0.00	0.00	0.00
3,600.0	8.00	107.03	3,575.3	1,105.68	-106.0	346.2	123.2	0.00	0.00	0.00
PARKMAN										
3,676.4	8.00	107.03	3,651.0	1,030.00	-109.1	356.4	126.8	0.00	0.00	0.00
3,700.0	8.00	107.03	3,674.3	1,006.65	-110.1	359.5	127.9	0.00	0.00	0.00
3,800.0	8.00	107.03	3,773.4	907.63	-114.2	372.8	132.7	0.00	0.00	0.00
3,900.0	8.00	107.03	3,872.4	808.60	-118.3	386.1	137.4	0.00	0.00	0.00
4,000.0	8.00	107.03	3,971.4	709.58	-122.3	399.5	142.2	0.00	0.00	0.00
4,100.0	8.00	107.03	4,070.4	610.55	-126.4	412.8	146.9	0.00	0.00	0.00
4,200.0	8.00	107.03	4,169.5	511.53	-130.5	426.1	151.6	0.00	0.00	0.00
4,300.0	8.00	107.03	4,268.5	412.50	-134.6	439.4	156.4	0.00	0.00	0.00
4,400.0	8.00	107.03	4,367.5	313.47	-138.6	452.7	161.1	0.00	0.00	0.00
SUSSEX										
4,449.0	8.00	107.03	4,416.0	265.00	-140.6	459.2	163.4	0.00	0.00	0.00

Database:	EDM 5000.1 Single User Db	Local Co-ordinate Reference:	Well CS-KINKADE C7-1-13
Company:	EXTRACTION OIL & GAS	TVD Reference:	KB-EST @ 4681.0usft (SAV 802)
Project:	WELD COUNTY, COLORADO (NAD 83)	MD Reference:	KB-EST @ 4681.0usft (SAV 802)
Site:	SW SE SEC 36 T6N R66W 6th P.M.	North Reference:	True
Well:	CS-KINKADE C7-1-13	Survey Calculation Method:	Minimum Curvature
Wellbore:	ORIGINAL WELLBORE		
Design:	PROPOSAL #1		

Planned Survey

MD (usft)	Inc (°)	Azi (°)	TVD (usft)	SS (usft)	+N/-S (usft)	+E/-W (usft)	Vertical Section (usft)	Dogleg Rate (°/100usft)	Build Rate (°/100usft)	Turn Rate (°/100usft)
4,500.0	8.00	107.03	4,466.6	214.45	-142.7	466.0	165.8	0.00	0.00	0.00
4,600.0	8.00	107.03	4,565.6	115.42	-146.8	479.3	170.6	0.00	0.00	0.00
4,700.0	8.00	107.03	4,664.6	16.40	-150.9	492.7	175.3	0.00	0.00	0.00
4,800.0	8.00	107.03	4,763.6	-82.63	-155.0	506.0	180.1	0.00	0.00	0.00
SHANNON										
4,889.2	8.00	107.03	4,852.0	-171.00	-158.6	517.9	184.3	0.00	0.00	0.00
4,900.0	8.00	107.03	4,862.7	-181.66	-159.0	519.3	184.8	0.00	0.00	0.00
5,000.0	8.00	107.03	4,961.7	-280.68	-163.1	532.6	189.5	0.00	0.00	0.00
5,100.0	8.00	107.03	5,060.7	-379.71	-167.2	545.9	194.3	0.00	0.00	0.00
5,200.0	8.00	107.03	5,159.7	-478.73	-171.3	559.2	199.0	0.00	0.00	0.00
5,300.0	8.00	107.03	5,258.8	-577.76	-175.3	572.5	203.8	0.00	0.00	0.00
5,400.0	8.00	107.03	5,357.8	-676.78	-179.4	585.9	208.5	0.00	0.00	0.00
5,500.0	8.00	107.03	5,456.8	-775.81	-183.5	599.2	213.2	0.00	0.00	0.00
5,600.0	8.00	107.03	5,555.8	-874.84	-187.6	612.5	218.0	0.00	0.00	0.00
5,700.0	8.00	107.03	5,654.9	-973.86	-191.6	625.8	222.7	0.00	0.00	0.00
5,800.0	8.00	107.03	5,753.9	-1,072.89	-195.7	639.1	227.4	0.00	0.00	0.00
5,900.0	8.00	107.03	5,852.9	-1,171.91	-199.8	652.4	232.2	0.00	0.00	0.00
6,000.0	8.00	107.03	5,951.9	-1,270.94	-203.9	665.7	236.9	0.00	0.00	0.00
6,100.0	8.00	107.03	6,051.0	-1,369.96	-208.0	679.1	241.7	0.00	0.00	0.00
6,200.0	8.00	107.03	6,150.0	-1,468.99	-212.0	692.4	246.4	0.00	0.00	0.00
END OF TANGENT										
6,224.3	8.00	107.03	6,174.1	-1,493.09	-213.0	695.6	247.6	0.00	0.00	0.00
6,300.0	6.49	107.03	6,249.1	-1,568.15	-215.8	704.7	250.8	2.00	-2.00	0.00
6,400.0	4.49	107.03	6,348.7	-1,667.68	-218.6	713.9	254.1	2.00	-2.00	0.00
6,500.0	2.49	107.03	6,448.5	-1,767.49	-220.4	719.7	256.1	2.00	-2.00	0.00
6,600.0	0.49	107.03	6,548.5	-1,867.45	-221.2	722.2	257.0	2.00	-2.00	0.00
EOD TO VERTICAL										
6,624.5	0.00	0.00	6,573.0	-1,892.00	-221.2	722.3	257.0	2.00	-2.00	0.00
KOP (10°/100ft BUR)										
6,654.5	0.00	0.00	6,603.0	-1,922.00	-221.2	722.3	257.0	0.00	0.00	0.00
6,700.0	4.54	180.13	6,648.4	-1,967.40	-223.0	722.3	258.8	10.00	10.00	0.00
6,800.0	14.54	180.13	6,746.9	-2,065.90	-239.6	722.3	275.4	10.00	10.00	0.00
6,900.0	24.54	180.13	6,841.0	-2,160.01	-273.0	722.2	308.8	10.00	10.00	0.00
NIOBRARA										
6,918.8	26.43	180.13	6,858.0	-2,177.00	-281.1	722.2	316.8	10.00	10.00	0.00
7,000.0	34.54	180.13	6,927.9	-2,246.90	-322.2	722.1	357.9	10.00	10.00	0.00
7,100.0	44.54	180.13	7,004.9	-2,323.92	-385.8	721.9	421.4	10.00	10.00	0.00
7,200.0	54.54	180.13	7,069.7	-2,388.73	-461.8	721.7	497.3	10.00	10.00	0.00
7,300.0	64.54	180.13	7,120.4	-2,439.36	-547.9	721.5	583.3	10.00	10.00	0.00
FORT HAYS										
7,344.8	69.02	180.13	7,138.0	-2,457.00	-589.0	721.5	624.4	10.00	10.00	0.00
7,400.0	74.54	180.13	7,155.3	-2,474.27	-641.5	721.3	676.7	10.00	10.00	0.00
CODELL										
7,447.4	79.28	180.13	7,166.0	-2,485.00	-687.6	721.2	722.8	10.00	10.00	0.00
7,500.0	84.54	180.13	7,173.4	-2,492.40	-739.7	721.1	774.8	10.00	10.00	0.00
LANDING PNT - CS-KINKADE C7-1-13										
7,554.6	90.00	180.13	7,176.0	-2,495.00	-794.2	721.0	829.3	10.00	10.00	0.00
7,600.0	90.00	180.13	7,176.0	-2,495.00	-839.6	720.9	874.6	0.00	0.00	0.00
7,700.0	90.00	180.13	7,176.0	-2,495.00	-939.6	720.7	974.5	0.00	0.00	0.00
7,800.0	90.00	180.13	7,176.0	-2,495.01	-1,039.6	720.4	1,074.3	0.00	0.00	0.00
7,900.0	90.00	180.13	7,176.0	-2,495.01	-1,139.6	720.2	1,174.2	0.00	0.00	0.00
8,000.0	90.00	180.13	7,176.0	-2,495.01	-1,239.6	720.0	1,274.0	0.00	0.00	0.00
8,100.0	90.00	180.13	7,176.0	-2,495.01	-1,339.6	719.7	1,373.9	0.00	0.00	0.00

Database:	EDM 5000.1 Single User Db	Local Co-ordinate Reference:	Well CS-KINKADE C7-1-13
Company:	EXTRACTION OIL & GAS	TVD Reference:	KB-EST @ 4681.0usft (SAV 802)
Project:	WELD COUNTY, COLORADO (NAD 83)	MD Reference:	KB-EST @ 4681.0usft (SAV 802)
Site:	SW SE SEC 36 T6N R66W 6th P.M.	North Reference:	True
Well:	CS-KINKADE C7-1-13	Survey Calculation Method:	Minimum Curvature
Wellbore:	ORIGINAL WELLBORE		
Design:	PROPOSAL #1		

Planned Survey

MD (usft)	Inc (°)	Azi (°)	TVD (usft)	SS (usft)	+N/-S (usft)	+E/-W (usft)	Vertical Section (usft)	Dogleg Rate (°/100usft)	Build Rate (°/100usft)	Turn Rate (°/100usft)
8,200.0	90.00	180.13	7,176.0	-2,495.01	-1,439.6	719.5	1,473.8	0.00	0.00	0.00
8,300.0	90.00	180.13	7,176.0	-2,495.02	-1,539.6	719.3	1,573.6	0.00	0.00	0.00
8,400.0	90.00	180.13	7,176.0	-2,495.02	-1,639.6	719.0	1,673.5	0.00	0.00	0.00
8,500.0	90.00	180.13	7,176.0	-2,495.02	-1,739.6	718.8	1,773.4	0.00	0.00	0.00
8,600.0	90.00	180.13	7,176.0	-2,495.02	-1,839.6	718.6	1,873.2	0.00	0.00	0.00
8,700.0	90.00	180.13	7,176.0	-2,495.02	-1,939.6	718.4	1,973.1	0.00	0.00	0.00
8,800.0	90.00	180.13	7,176.0	-2,495.03	-2,039.6	718.1	2,072.9	0.00	0.00	0.00
8,900.0	90.00	180.13	7,176.0	-2,495.03	-2,139.6	717.9	2,172.8	0.00	0.00	0.00
9,000.0	90.00	180.13	7,176.0	-2,495.03	-2,239.6	717.7	2,272.7	0.00	0.00	0.00
9,100.0	90.00	180.13	7,176.0	-2,495.03	-2,339.6	717.4	2,372.5	0.00	0.00	0.00
9,200.0	90.00	180.13	7,176.0	-2,495.03	-2,439.6	717.2	2,472.4	0.00	0.00	0.00
9,300.0	90.00	180.13	7,176.0	-2,495.04	-2,539.6	717.0	2,572.3	0.00	0.00	0.00
9,400.0	90.00	180.13	7,176.0	-2,495.04	-2,639.6	716.7	2,672.1	0.00	0.00	0.00
9,500.0	90.00	180.13	7,176.0	-2,495.04	-2,739.6	716.5	2,772.0	0.00	0.00	0.00
9,600.0	90.00	180.13	7,176.0	-2,495.04	-2,839.6	716.3	2,871.9	0.00	0.00	0.00
9,700.0	90.00	180.13	7,176.0	-2,495.04	-2,939.6	716.0	2,971.7	0.00	0.00	0.00
9,800.0	90.00	180.13	7,176.0	-2,495.04	-3,039.6	715.8	3,071.6	0.00	0.00	0.00
9,900.0	90.00	180.13	7,176.0	-2,495.04	-3,139.6	715.6	3,171.4	0.00	0.00	0.00
10,000.0	90.00	180.13	7,176.0	-2,495.05	-3,239.6	715.4	3,271.3	0.00	0.00	0.00
10,100.0	90.00	180.13	7,176.0	-2,495.05	-3,339.6	715.1	3,371.2	0.00	0.00	0.00
10,200.0	90.00	180.13	7,176.0	-2,495.05	-3,439.6	714.9	3,471.0	0.00	0.00	0.00
10,300.0	90.00	180.13	7,176.1	-2,495.05	-3,539.6	714.7	3,570.9	0.00	0.00	0.00
10,400.0	90.00	180.13	7,176.1	-2,495.05	-3,639.6	714.4	3,670.8	0.00	0.00	0.00
10,500.0	90.00	180.13	7,176.1	-2,495.05	-3,739.6	714.2	3,770.6	0.00	0.00	0.00
10,600.0	90.00	180.13	7,176.1	-2,495.05	-3,839.6	714.0	3,870.5	0.00	0.00	0.00
10,700.0	90.00	180.13	7,176.1	-2,495.06	-3,939.6	713.7	3,970.3	0.00	0.00	0.00
10,800.0	90.00	180.13	7,176.1	-2,495.06	-4,039.6	713.5	4,070.2	0.00	0.00	0.00
10,900.0	90.00	180.13	7,176.1	-2,495.06	-4,139.6	713.3	4,170.1	0.00	0.00	0.00
11,000.0	90.00	180.13	7,176.1	-2,495.06	-4,239.6	713.0	4,269.9	0.00	0.00	0.00
11,100.0	90.00	180.13	7,176.1	-2,495.06	-4,339.6	712.8	4,369.8	0.00	0.00	0.00
11,200.0	90.00	180.13	7,176.1	-2,495.06	-4,439.6	712.6	4,469.7	0.00	0.00	0.00
11,300.0	90.00	180.13	7,176.1	-2,495.06	-4,539.6	712.3	4,569.5	0.00	0.00	0.00
11,400.0	90.00	180.13	7,176.1	-2,495.06	-4,639.6	712.1	4,669.4	0.00	0.00	0.00
11,500.0	90.00	180.13	7,176.1	-2,495.06	-4,739.6	711.9	4,769.2	0.00	0.00	0.00
11,600.0	90.00	180.13	7,176.1	-2,495.06	-4,839.6	711.7	4,869.1	0.00	0.00	0.00
11,700.0	90.00	180.13	7,176.1	-2,495.07	-4,939.6	711.4	4,969.0	0.00	0.00	0.00
11,800.0	90.00	180.13	7,176.1	-2,495.07	-5,039.6	711.2	5,068.8	0.00	0.00	0.00
11,900.0	90.00	180.13	7,176.1	-2,495.07	-5,139.6	711.0	5,168.7	0.00	0.00	0.00
12,000.0	90.00	180.13	7,176.1	-2,495.07	-5,239.6	710.7	5,268.6	0.00	0.00	0.00
12,100.0	90.00	180.13	7,176.1	-2,495.07	-5,339.6	710.5	5,368.4	0.00	0.00	0.00
12,200.0	90.00	180.13	7,176.1	-2,495.07	-5,439.6	710.3	5,468.3	0.00	0.00	0.00
12,300.0	90.00	180.13	7,176.1	-2,495.07	-5,539.6	710.0	5,568.2	0.00	0.00	0.00
12,400.0	90.00	180.13	7,176.1	-2,495.07	-5,639.6	709.8	5,668.0	0.00	0.00	0.00
12,500.0	90.00	180.13	7,176.1	-2,495.07	-5,739.6	709.6	5,767.9	0.00	0.00	0.00
12,600.0	90.00	180.13	7,176.1	-2,495.07	-5,839.6	709.3	5,867.7	0.00	0.00	0.00
12,700.0	90.00	180.13	7,176.1	-2,495.07	-5,939.6	709.1	5,967.6	0.00	0.00	0.00
12,800.0	90.00	180.13	7,176.1	-2,495.07	-6,039.6	708.9	6,067.5	0.00	0.00	0.00
12,900.0	90.00	180.13	7,176.1	-2,495.07	-6,139.6	708.6	6,167.3	0.00	0.00	0.00
13,000.0	90.00	180.13	7,176.1	-2,495.07	-6,239.6	708.4	6,267.2	0.00	0.00	0.00
13,100.0	90.00	180.13	7,176.1	-2,495.07	-6,339.6	708.2	6,367.1	0.00	0.00	0.00
13,200.0	90.00	180.13	7,176.1	-2,495.07	-6,439.6	707.9	6,466.9	0.00	0.00	0.00
13,300.0	90.00	180.13	7,176.1	-2,495.07	-6,539.6	707.7	6,566.8	0.00	0.00	0.00
13,400.0	90.00	180.13	7,176.1	-2,495.07	-6,639.6	707.5	6,666.6	0.00	0.00	0.00
13,500.0	90.00	180.13	7,176.1	-2,495.07	-6,739.6	707.2	6,766.5	0.00	0.00	0.00

Planning Report



Database:	EDM 5000.1 Single User Db	Local Co-ordinate Reference:	Well CS-KINKADE C7-1-13
Company:	EXTRACTION OIL & GAS	TVD Reference:	KB-EST @ 4681.0usft (SAV 802)
Project:	WELD COUNTY, COLORADO (NAD 83)	MD Reference:	KB-EST @ 4681.0usft (SAV 802)
Site:	SW SE SEC 36 T6N R66W 6th P.M.	North Reference:	True
Well:	CS-KINKADE C7-1-13	Survey Calculation Method:	Minimum Curvature
Wellbore:	ORIGINAL WELLBORE		
Design:	PROPOSAL #1		

Planned Survey										
MD (usft)	Inc (°)	Azi (°)	TVD (usft)	SS (usft)	+N/-S (usft)	+E/-W (usft)	Vertical Section (usft)	Dogleg Rate (°/100usft)	Build Rate (°/100usft)	Turn Rate (°/100usft)
13,600.0	90.00	180.13	7,176.1	-2,495.07	-6,839.6	707.0	6,866.4	0.00	0.00	0.00
13,700.0	90.00	180.13	7,176.1	-2,495.08	-6,939.6	706.8	6,966.2	0.00	0.00	0.00
13,800.0	90.00	180.13	7,176.1	-2,495.08	-7,039.6	706.5	7,066.1	0.00	0.00	0.00
13,900.0	90.00	180.13	7,176.1	-2,495.08	-7,139.6	706.3	7,166.0	0.00	0.00	0.00
14,000.0	90.00	180.13	7,176.1	-2,495.08	-7,239.6	706.1	7,265.8	0.00	0.00	0.00
14,100.0	90.00	180.13	7,176.1	-2,495.08	-7,339.6	705.8	7,365.7	0.00	0.00	0.00
14,200.0	90.00	180.13	7,176.1	-2,495.08	-7,439.6	705.6	7,465.5	0.00	0.00	0.00
14,300.0	90.00	180.13	7,176.1	-2,495.08	-7,539.6	705.4	7,565.4	0.00	0.00	0.00
14,400.0	90.00	180.13	7,176.1	-2,495.08	-7,639.6	705.2	7,665.3	0.00	0.00	0.00
14,500.0	90.00	180.13	7,176.1	-2,495.07	-7,739.6	704.9	7,765.1	0.00	0.00	0.00
14,600.0	90.00	180.13	7,176.1	-2,495.07	-7,839.6	704.7	7,865.0	0.00	0.00	0.00
14,700.0	90.00	180.13	7,176.1	-2,495.07	-7,939.6	704.5	7,964.9	0.00	0.00	0.00
14,800.0	90.00	180.13	7,176.1	-2,495.07	-8,039.6	704.2	8,064.7	0.00	0.00	0.00
14,900.0	90.00	180.13	7,176.1	-2,495.07	-8,139.6	704.0	8,164.6	0.00	0.00	0.00
15,000.0	90.00	180.13	7,176.1	-2,495.07	-8,239.6	703.8	8,264.5	0.00	0.00	0.00
15,100.0	90.00	180.13	7,176.1	-2,495.07	-8,339.6	703.5	8,364.3	0.00	0.00	0.00
15,200.0	90.00	180.13	7,176.1	-2,495.07	-8,439.6	703.3	8,464.2	0.00	0.00	0.00
15,300.0	90.00	180.13	7,176.1	-2,495.07	-8,539.6	703.1	8,564.0	0.00	0.00	0.00
15,400.0	90.00	180.13	7,176.1	-2,495.07	-8,639.6	702.8	8,663.9	0.00	0.00	0.00
15,500.0	90.00	180.13	7,176.1	-2,495.07	-8,739.6	702.6	8,763.8	0.00	0.00	0.00
15,600.0	90.00	180.13	7,176.1	-2,495.07	-8,839.6	702.4	8,863.6	0.00	0.00	0.00
15,700.0	90.00	180.13	7,176.1	-2,495.07	-8,939.6	702.1	8,963.5	0.00	0.00	0.00
15,800.0	90.00	180.13	7,176.1	-2,495.07	-9,039.6	701.9	9,063.4	0.00	0.00	0.00
15,900.0	90.00	180.13	7,176.1	-2,495.07	-9,139.6	701.7	9,163.2	0.00	0.00	0.00
16,000.0	90.00	180.13	7,176.1	-2,495.07	-9,239.6	701.4	9,263.1	0.00	0.00	0.00
16,100.0	90.00	180.13	7,176.1	-2,495.07	-9,339.6	701.2	9,362.9	0.00	0.00	0.00
16,200.0	90.00	180.13	7,176.1	-2,495.07	-9,439.6	700.9	9,462.8	0.00	0.00	0.00
16,300.0	90.00	180.13	7,176.1	-2,495.07	-9,539.6	700.7	9,562.7	0.00	0.00	0.00
16,400.0	90.00	180.13	7,176.1	-2,495.07	-9,639.6	700.5	9,662.5	0.00	0.00	0.00
16,500.0	90.00	180.13	7,176.1	-2,495.06	-9,739.6	700.2	9,762.4	0.00	0.00	0.00
16,600.0	90.00	180.13	7,176.1	-2,495.06	-9,839.6	700.0	9,862.3	0.00	0.00	0.00
16,700.0	90.00	180.13	7,176.1	-2,495.06	-9,939.6	699.8	9,962.1	0.00	0.00	0.00
16,800.0	90.00	180.13	7,176.1	-2,495.06	-10,039.6	699.5	10,062.0	0.00	0.00	0.00
16,900.0	90.00	180.13	7,176.1	-2,495.06	-10,139.6	699.3	10,161.8	0.00	0.00	0.00
17,000.0	90.00	180.13	7,176.1	-2,495.06	-10,239.6	699.1	10,261.7	0.00	0.00	0.00
17,100.0	90.00	180.13	7,176.1	-2,495.06	-10,339.6	698.8	10,361.6	0.00	0.00	0.00
17,200.0	90.00	180.13	7,176.1	-2,495.06	-10,439.6	698.6	10,461.4	0.00	0.00	0.00
17,300.0	90.00	180.13	7,176.1	-2,495.06	-10,539.6	698.4	10,561.3	0.00	0.00	0.00
17,400.0	90.00	180.13	7,176.1	-2,495.06	-10,639.6	698.1	10,661.2	0.00	0.00	0.00
17,500.0	90.00	180.13	7,176.1	-2,495.05	-10,739.6	697.9	10,761.0	0.00	0.00	0.00
17,600.0	90.00	180.13	7,176.1	-2,495.05	-10,839.6	697.7	10,860.9	0.00	0.00	0.00
17,700.0	90.00	180.13	7,176.1	-2,495.05	-10,939.6	697.4	10,960.7	0.00	0.00	0.00
17,800.0	90.00	180.13	7,176.1	-2,495.05	-11,039.6	697.2	11,060.6	0.00	0.00	0.00
17,900.0	90.00	180.13	7,176.0	-2,495.05	-11,139.6	697.0	11,160.5	0.00	0.00	0.00
18,000.0	90.00	180.13	7,176.0	-2,495.05	-11,239.6	696.7	11,260.3	0.00	0.00	0.00
18,100.0	90.00	180.13	7,176.0	-2,495.05	-11,339.6	696.5	11,360.2	0.00	0.00	0.00
18,200.0	90.00	180.13	7,176.0	-2,495.04	-11,439.6	696.3	11,460.1	0.00	0.00	0.00
18,300.0	90.00	180.13	7,176.0	-2,495.04	-11,539.6	696.0	11,559.9	0.00	0.00	0.00
18,400.0	90.00	180.13	7,176.0	-2,495.04	-11,639.6	695.8	11,659.8	0.00	0.00	0.00
18,500.0	90.00	180.13	7,176.0	-2,495.04	-11,739.6	695.6	11,759.7	0.00	0.00	0.00
18,600.0	90.00	180.13	7,176.0	-2,495.04	-11,839.6	695.3	11,859.5	0.00	0.00	0.00
18,700.0	90.00	180.13	7,176.0	-2,495.04	-11,939.6	695.1	11,959.4	0.00	0.00	0.00
18,800.0	90.00	180.13	7,176.0	-2,495.04	-12,039.6	694.9	12,059.2	0.00	0.00	0.00
18,900.0	90.00	180.13	7,176.0	-2,495.03	-12,139.6	694.6	12,159.1	0.00	0.00	0.00

Database:	EDM 5000.1 Single User Db	Local Co-ordinate Reference:	Well CS-KINKADE C7-1-13
Company:	EXTRACTION OIL & GAS	TVD Reference:	KB-EST @ 4681.0usft (SAV 802)
Project:	WELD COUNTY, COLORADO (NAD 83)	MD Reference:	KB-EST @ 4681.0usft (SAV 802)
Site:	SW SE SEC 36 T6N R66W 6th P.M.	North Reference:	True
Well:	CS-KINKADE C7-1-13	Survey Calculation Method:	Minimum Curvature
Wellbore:	ORIGINAL WELLBORE		
Design:	PROPOSAL #1		

Planned Survey

MD (usft)	Inc (°)	Azi (°)	TVD (usft)	SS (usft)	+N/-S (usft)	+E/-W (usft)	Vertical Section (usft)	Dogleg Rate (°/100usft)	Build Rate (°/100usft)	Turn Rate (°/100usft)
19,000.0	90.00	180.13	7,176.0	-2,495.03	-12,239.6	694.4	12,259.0	0.00	0.00	0.00
19,100.0	90.00	180.13	7,176.0	-2,495.03	-12,339.6	694.1	12,358.8	0.00	0.00	0.00
19,200.0	90.00	180.13	7,176.0	-2,495.03	-12,439.6	693.9	12,458.7	0.00	0.00	0.00
19,300.0	90.00	180.13	7,176.0	-2,495.03	-12,539.6	693.7	12,558.6	0.00	0.00	0.00
19,400.0	90.00	180.13	7,176.0	-2,495.02	-12,639.6	693.4	12,658.4	0.00	0.00	0.00
19,500.0	90.00	180.13	7,176.0	-2,495.02	-12,739.6	693.2	12,758.3	0.00	0.00	0.00
19,600.0	90.00	180.13	7,176.0	-2,495.02	-12,839.6	693.0	12,858.1	0.00	0.00	0.00
19,700.0	90.00	180.13	7,176.0	-2,495.02	-12,939.6	692.7	12,958.0	0.00	0.00	0.00
19,800.0	90.00	180.13	7,176.0	-2,495.02	-13,039.6	692.5	13,057.9	0.00	0.00	0.00
19,900.0	90.00	180.13	7,176.0	-2,495.01	-13,139.6	692.3	13,157.7	0.00	0.00	0.00
20,000.0	90.00	180.13	7,176.0	-2,495.01	-13,239.6	692.0	13,257.6	0.00	0.00	0.00
20,100.0	90.00	180.14	7,176.0	-2,495.01	-13,339.6	691.8	13,357.5	0.00	0.00	0.00
20,200.0	90.00	180.14	7,176.0	-2,495.01	-13,439.6	691.6	13,457.3	0.00	0.00	0.00
20,300.0	90.00	180.14	7,176.0	-2,495.01	-13,539.6	691.3	13,557.2	0.00	0.00	0.00
20,400.0	90.00	180.14	7,176.0	-2,495.00	-13,639.5	691.1	13,657.0	0.00	0.00	0.00
20,500.0	90.00	180.14	7,176.0	-2,495.00	-13,739.5	690.9	13,756.9	0.00	0.00	0.00
BHL - CS-KINKADE C7-1-13										
20,553.3	90.00	180.14	7,176.0	-2,495.00	-13,792.8	690.7	13,810.1	0.00	0.00	0.00

Formations

MD (usft)	TVD (usft)	Name	Lithology	Dip (°)	Dip Direction (°)
3,676.4	3,651.0	PARKMAN			
4,449.0	4,416.0	SUSSEX			
4,889.2	4,852.0	SHANNON			
6,918.8	6,858.0	NIOBRARA			
7,344.8	7,138.0	FORT HAYS			
7,447.4	7,166.0	CODELL			

Plan Annotations

MD (usft)	TVD (usft)	Local Coordinates		Comment
		+N/-S (usft)	+E/-W (usft)	
800.0	800.0	0.0	0.0	START NUDGE (2°/100ft BUR)
1,200.2	1,198.9	-8.2	26.7	EOB TO 8° INC
1,807.2	1,800.0	-32.9	107.5	9 5/8" SURFACE CSG
6,224.3	6,174.1	-213.0	695.6	END OF TANGENT
6,624.5	6,573.0	-221.2	722.3	EOD TO VERTICAL
6,654.5	6,603.0	-221.2	722.3	KOP (10°/100ft BUR)
7,554.6	7,176.0	-794.2	721.0	LANDING PNT - CS-KINKADE C7-1-13
20,553.3	7,176.0	-13,792.8	690.7	BHL - CS-KINKADE C7-1-13