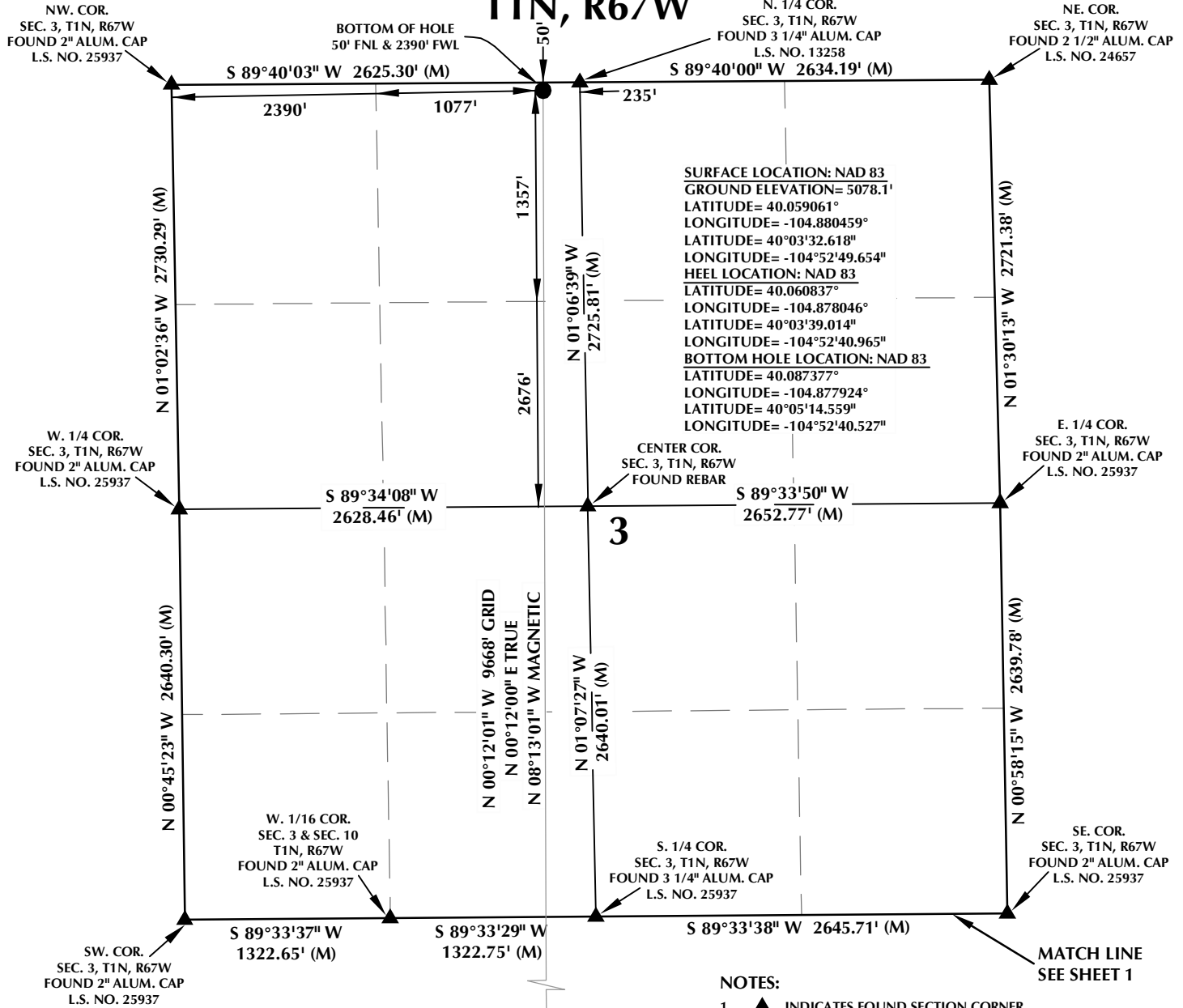


T1N, R67W



SURFACE LOCATION: NAD 83
 GROUND ELEVATION= 5078.1'
 LATITUDE= 40.059061°
 LONGITUDE= -104.880459°
 LATITUDE= 40°03'32.618"
 LONGITUDE= -104°52'49.654"
HEEL LOCATION: NAD 83
 LATITUDE= 40.060837°
 LONGITUDE= -104.878046°
 LATITUDE= 40°03'39.014"
 LONGITUDE= -104°52'40.965"
BOTTOM HOLE LOCATION: NAD 83
 LATITUDE= 40.087377°
 LONGITUDE= -104.877924°
 LATITUDE= 40°05'14.559"
 LONGITUDE= -104°52'40.527"

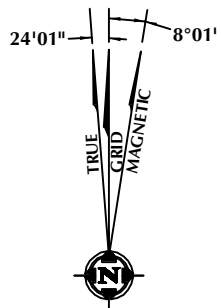
NOTES:

- ▲ INDICATES FOUND SECTION CORNER
- INDICATES CALCULATED CORNER
- ELEVATION BASED ON NAVD88 (GEIOD12B)
- BASIS OF BEARING DERIVED FROM COLORADO COORDINATE SYSTEM 1983 NORTH ZONE UNLESS OTHERWISE NOTED.
- ALL MEASURED DISTANCES ARE GRID. COMBINED SCALE FACTOR: .99972303
- OPERATOR: ROB WILSON / PDOP = 1.4
- SEE ADDENDUM TO WELL LOCATION CERTIFICATE FOR EXISTING IMPROVEMENTS WITHIN 500' OF THE WELL PAD.
- WELL FOOTAGES ARE MEASURED AT RIGHT ANGLES TO THE SECTION LINES.
- THE BOTTOM OF HOLE BEARS N00°12'01"W, 9668' FROM THE HEEL LOCATION.

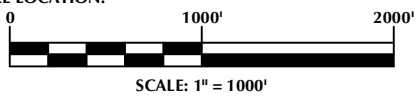
CERTIFICATE OF SURVEYOR:

THIS IS TO CERTIFY THAT THE ABOVE PLAT WAS PREPARED FROM FIELD NOTES OF ACTUAL SURVEY MADE BY ME OR UNDER MY SUPERVISION AND THAT THE SAME ARE TRUE AND CORRECT TO THE BEST OF MY KNOWLEDGE AND BELIEF. THIS CERTIFICATE DOES NOT REPRESENT A LAND SURVEY PLAT OR IMPROVEMENT SURVEY PLAT AS DEFINED BY C.R.S. 38-51-102 AND CANNOT BE RELIED UPON TO DETERMINE OWNERSHIP.

Jacob I. Dunham
 JACOB I. DUNHAM
 PROFESSIONAL LAND SURVEYOR
 COLORADO REGISTRATION NUMBER 18459
 10/16/15



NOTE: MAGNETIC NORTH IS CURRENT AS OF 10/12/2015. MAGNETIC NORTH CHANGES WEST 0°06' PER YEAR.



WELL PAD - JZM 3N-W3HZ

JZM 3N-E3HZ
 WELL LOCATION CERTIFICATE
 286' FSL & 1640' FWL SESW (SURFACE)
 933' FSL & 2315' FWL SESW (HEEL)
 LOCATED IN SECTION 10
 50' FNL & 2390' FWL NENW (BOTTOM)
 LOCATED IN SECTION 3
 T1N, R67W, 6TH P.M.
 WELD COUNTY, COLORADO

Kerr-McGee Oil & Gas Onshore L.P.
 1099 18th Street
 Denver, Colorado 80202



CONSULTING, LLC

SHERIDAN OFFICE
 1095 Saberton Avenue
 Sheridan, Wyoming 82801
 Phone 307-674-0609

LOVELAND OFFICE
 1635 Foxtrail Drive, Suite 204
 Loveland, Colorado 80538
 Phone 970-776-4331

DRAFTED BY: LMO	CHECKED BY: JID	SHEET NO: 2 2 OF 2
DATE DRAFTED: 9/18/15	DATE SURVEYED: 10/12/15	
REVISED: 10/16/15	FILE NAME: 13-39	

K:\ADARKO\2013\13_39_WATTENBERG_T1_R67_SEC_10\PLATS\JZM_3N-W3HZ\JZM_3N-W3HZ_PLAT.dwg 10/16/2015 2:38:46 PM lsa