



# Kerr-McGee Oil & Gas Onshore LP

A subsidiary of Anadarko Petroleum Corporation

1099 18<sup>th</sup> Street  
Denver, CO 80202  
720-929-6000

December 4, 2015

Matt Lepore  
Director, Colorado Oil and Gas Conservation Commission  
Department of Natural Resources  
The Chancery Building  
1120 Lincoln Street, Suite 801  
Denver, CO 80203

Re: **30 Day Certification Letter - 318A.e**  
JZM 29N-E3HZ (Doc #400906196)  
Township 1 North, Range 67 West  
Section 10: SE/4SW/4  
Unit Acreage: 720  
Unit Spacing: 01N-67W-Sec 03 W/2  
01N-67W-Sec 10 W/2  
02N-67W-Sec 34 S/2SW/4  
Weld County, Colorado

Dear Director Lepore:

Kerr McGee Oil and Gas Onshore LP (“KMG”) hereby certifies that KMG owns one hundred percent (100%) of the leasehold interest in the mineral rights in the proposed spacing unit. KMG hereby respectfully requests approval of this boundary well.

If you have any questions or issues regarding this permit, please contact Cheryl Light at (720) 929-6461.

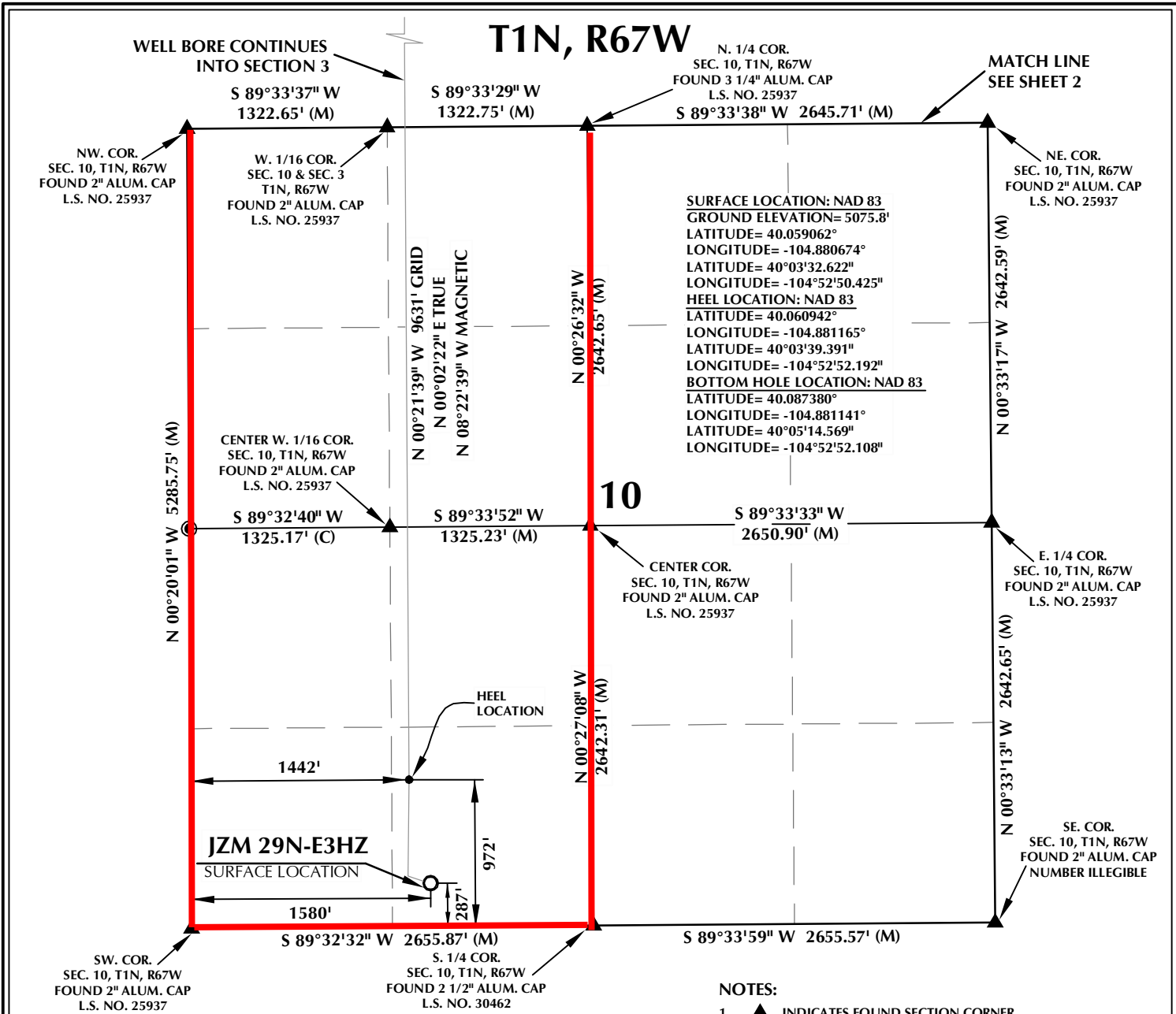
Very truly yours,

**KERR-McGEE OIL AND GAS ONSHORE LP**

A handwritten signature in blue ink that reads "Cheryl Light".

Cheryl Light  
Senior Regulatory Analyst

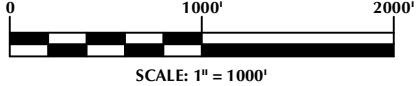
PROPOSED SPACING UNIT



**SURFACE LOCATION: NAD 83**  
 GROUND ELEVATION= 5075.8'  
 LATITUDE= 40.059062°  
 LONGITUDE= -104.880674°  
 LATITUDE= 40°03'32.622"  
 LONGITUDE= -104°52'50.425"  
**HEEL LOCATION: NAD 83**  
 LATITUDE= 40.060942°  
 LONGITUDE= -104.881165°  
 LATITUDE= 40°03'39.391"  
 LONGITUDE= -104°52'52.192"  
**BOTTOM HOLE LOCATION: NAD 83**  
 LATITUDE= 40.087380°  
 LONGITUDE= -104.881141°  
 LATITUDE= 40°05'14.569"  
 LONGITUDE= -104°52'52.108"

**NOTES:**

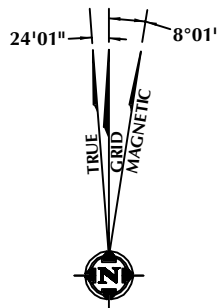
- ▲ INDICATES FOUND SECTION CORNER
- INDICATES CALCULATED CORNER
- ELEVATION BASED ON NAVD88 (GEOID12B)
- BASIS OF BEARING DERIVED FROM COLORADO COORDINATE SYSTEM 1983 NORTH ZONE UNLESS OTHERWISE NOTED.
- ALL MEASURED DISTANCES ARE GRID. COMBINED SCALE FACTOR: .99972303
- OPERATOR: ROB WILSON / PDOP = 1.3
- SEE ADDENDUM TO WELL LOCATION CERTIFICATE FOR EXISTING IMPROVEMENTS WITHIN 500' OF THE WELL PAD.
- WELL FOOTAGES ARE MEASURED AT RIGHT ANGLES TO THE SECTION LINES.
- THE BOTTOM OF HOLE BEARS N00°21'39"W, 9631' FROM THE HEEL LOCATION.



**CERTIFICATE OF SURVEYOR:**

THIS IS TO CERTIFY THAT THE ABOVE PLAT WAS PREPARED FROM FIELD NOTES OF ACTUAL SURVEY MADE BY ME OR UNDER MY SUPERVISION AND THAT THE SAME ARE TRUE AND CORRECT TO THE BEST OF MY KNOWLEDGE AND BELIEF. THIS CERTIFICATE DOES NOT REPRESENT A LAND SURVEY PLAT OR IMPROVEMENT SURVEY PLAT AS DEFINED BY C.R.S. 38-511-02 AND CANNOT BE RELIED UPON TO DETERMINE OWNERSHIP.

*Jacob I. Dunham*  
 JACOB I. DUNHAM  
 PROFESSIONAL LAND SURVEYOR  
 COLORADO REGISTRATION NUMBER 14849  
 10/16/15



NOTE:  
 MAGNETIC NORTH IS CURRENT AS OF 10/12/2015.  
 MAGNETIC NORTH CHANGES WEST 0°06' PER YEAR.

**WELL PAD - JZM 3N-W3HZ**

JZM 29N-E3HZ  
 WELL LOCATION CERTIFICATE  
 287' FSL & 1580' FWL SESW (SURFACE)  
 972' FSL & 1442' FWL SESW (HEEL)  
 LOCATED IN SECTION 10  
 50' FNL & 1490' FWL NENW (BOTTOM)  
 LOCATED IN SECTION 3  
 T1N, R67W, 6TH P.M.  
 WELD COUNTY, COLORADO

**Kerr-McGee Oil &  
 Gas Onshore L.P.**  
 1099 18th Street  
 Denver, Colorado 80202



**CONSULTING, LLC**

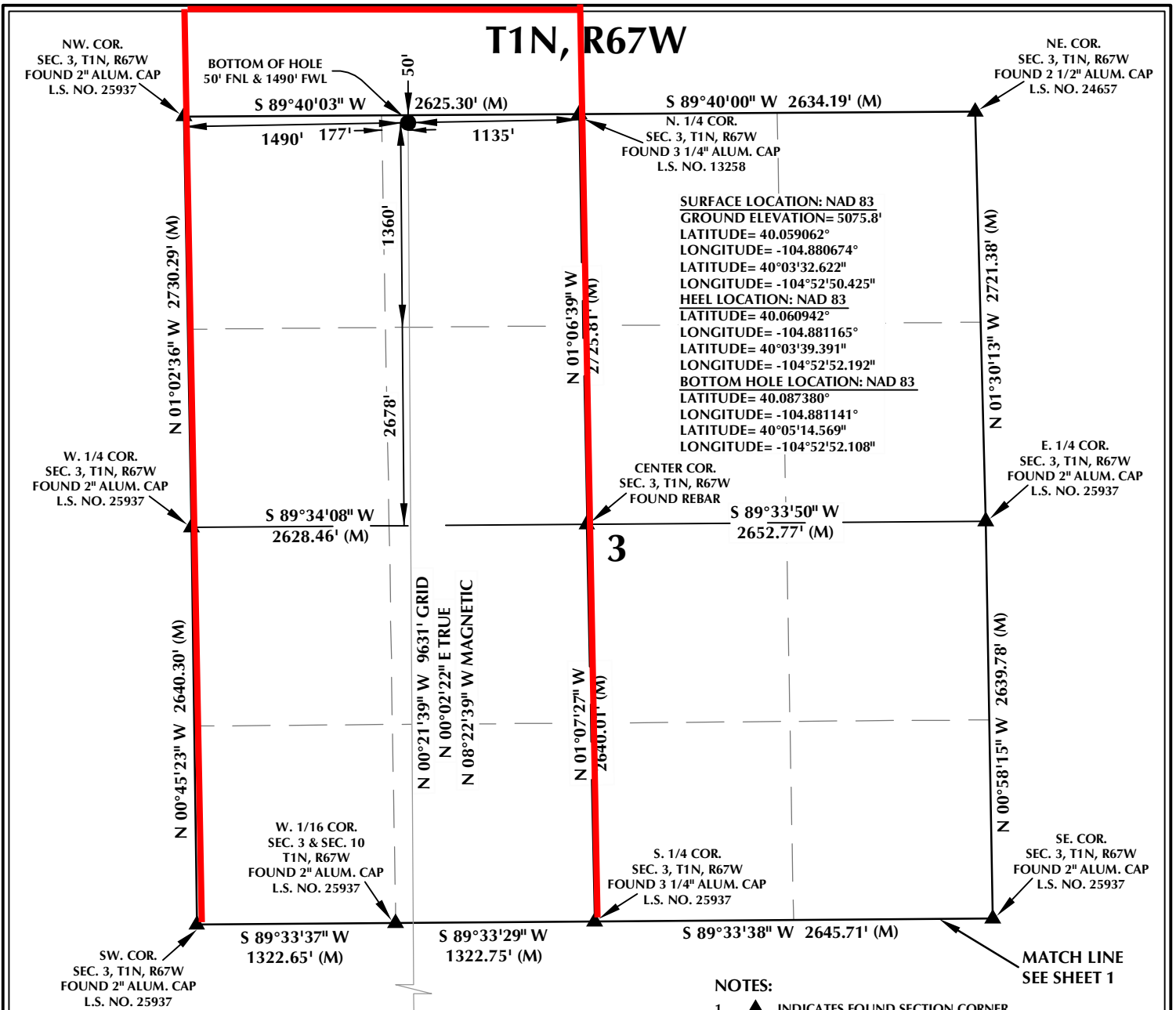
**SHERIDAN OFFICE**  
 1095 Saberton Avenue  
 Sheridan, Wyoming 82801  
 Phone 307-674-0609

**LOVELAND OFFICE**  
 1635 Foxtrail Drive, Suite 204  
 Loveland, Colorado 80538  
 Phone 970-776-4331

DRAFTED BY: LMO	CHECKED BY: JID	SHEET NO: <b>1</b> 1 OF 2
DATE DRAFTED: 9/18/15	DATE SURVEYED: 10/12/15	
REVISED: 10/16/15	FILE NAME: 13-39	

K:\MADARCO\2013\13\_39\_WATTENBERG\_T1\_R67\_SEC\_10\PLATS\JZM\_3N-W3HZ\_PLAT.dwg, 10/19/2015 3:46:43 PM, jlabr

PROPOSED SPACING UNIT



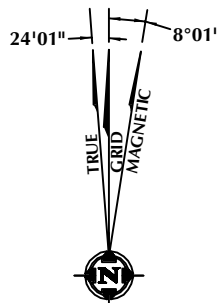
**SURFACE LOCATION: NAD 83**  
 GROUND ELEVATION= 5075.8'  
 LATITUDE= 40.059062°  
 LONGITUDE= -104.880674°  
 LATITUDE= 40°03'32.622"  
 LONGITUDE= -104°52'50.425"  
**HEEL LOCATION: NAD 83**  
 LATITUDE= 40.060942°  
 LONGITUDE= -104.881165°  
 LATITUDE= 40°03'39.391"  
 LONGITUDE= -104°52'52.192"  
**BOTTOM HOLE LOCATION: NAD 83**  
 LATITUDE= 40.087380°  
 LONGITUDE= -104.881141°  
 LATITUDE= 40°05'14.569"  
 LONGITUDE= -104°52'52.108"

**CERTIFICATE OF SURVEYOR:**

THIS IS TO CERTIFY THAT THE ABOVE PLAT WAS PREPARED FROM FIELD NOTES OF ACTUAL SURVEY MADE BY ME OR UNDER MY SUPERVISION AND THAT THE SAME ARE TRUE AND CORRECT TO THE BEST OF MY KNOWLEDGE AND BELIEF. THIS CERTIFICATE DOES NOT REPRESENT A LAND SURVEY PLAT OR IMPROVEMENT SURVEY PLAT AS DEFINED BY C.R.S. 38-51-102 AND CANNOT BE RELIED UPON TO DETERMINE OWNERSHIP.

*Jacob I. Dunham*  
 JACOB I. DUNHAM  
 PROFESSIONAL LAND SURVEYOR  
 COLORADO REGISTRATION NUMBER 18459  
 10/16/15

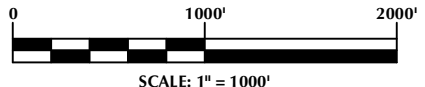
**NOTICE:**  
 ACCORDING TO COLORADO STATE LAW YOU MUST COMMENCE ANY LEGAL ACTION BASED UPON ANY DEFECT IN THIS SURVEY WITHIN THREE YEARS AFTER YOU FIRST DISCOVER SUCH DEFECT. IN NO EVENT MAY ANY ACTION BASED UPON ANY DEFECT IN THIS SURVEY BE COMMENCED MORE THAN TEN YEARS FROM THE DATE ON THE CERTIFICATION SHOWN HEREON.



**NOTE:**  
 MAGNETIC NORTH IS CURRENT AS OF 10/12/2015.  
 MAGNETIC NORTH CHANGES WEST 0°06' PER YEAR.

**NOTES:**

- ▲ INDICATES FOUND SECTION CORNER
- INDICATES CALCULATED CORNER
- ELEVATION BASED ON NAVD88 (GEOID12B)
- BASIS OF BEARING DERIVED FROM COLORADO COORDINATE SYSTEM 1983 NORTH ZONE UNLESS OTHERWISE NOTED.
- ALL MEASURED DISTANCES ARE GRID. COMBINED SCALE FACTOR: .99972303
- OPERATOR: ROB WILSON / PDOP = 1.3
- SEE ADDENDUM TO WELL LOCATION CERTIFICATE FOR EXISTING IMPROVEMENTS WITHIN 500' OF THE WELL PAD.
- WELL FOOTAGES ARE MEASURED AT RIGHT ANGLES TO THE SECTION LINES.
- THE BOTTOM OF HOLE BEARS N00°21'39"W, 9631' FROM THE HEEL LOCATION.



**WELL PAD - JZM 3N-W3HZ**

JZM 29N-E3HZ  
 WELL LOCATION CERTIFICATE  
 287' FSL & 1580' FWL SESW (SURFACE)  
 972' FSL & 1442' FWL SESW (HEEL)  
 LOCATED IN SECTION 10  
 50' FNL & 1490' FWL NENW (BOTTOM)  
 LOCATED IN SECTION 3  
 T1N, R67W, 6TH P.M.  
 WELD COUNTY, COLORADO

**Kerr-McGee Oil &  
 Gas Onshore L.P.**  
 1099 18th Street  
 Denver, Colorado 80202



**CONSULTING, LLC**

**SHERIDAN OFFICE**  
 1095 Saberton Avenue  
 Sheridan, Wyoming 82801  
 Phone 307-674-0609

**LOVELAND OFFICE**  
 1635 Foxtrail Drive, Suite 204  
 Loveland, Colorado 80538  
 Phone 970-776-4331

DRAFTED BY:	LMO	CHECKED BY:	JID	SHEET NO:
DATE DRAFTED:	9/18/15	DATE SURVEYED:	10/12/15	2
REVISED:	10/16/15	FILE NAME:	13-39	2 OF 2

K:\VADARCO\2013\2013\_39\_WATTENBERG\_T1\_R67\_SEC\_10\PLATS\JZM\_3N-W3HZ\_PLAT.dwg, 10/19/2015 3:50:00 PM, jzhu