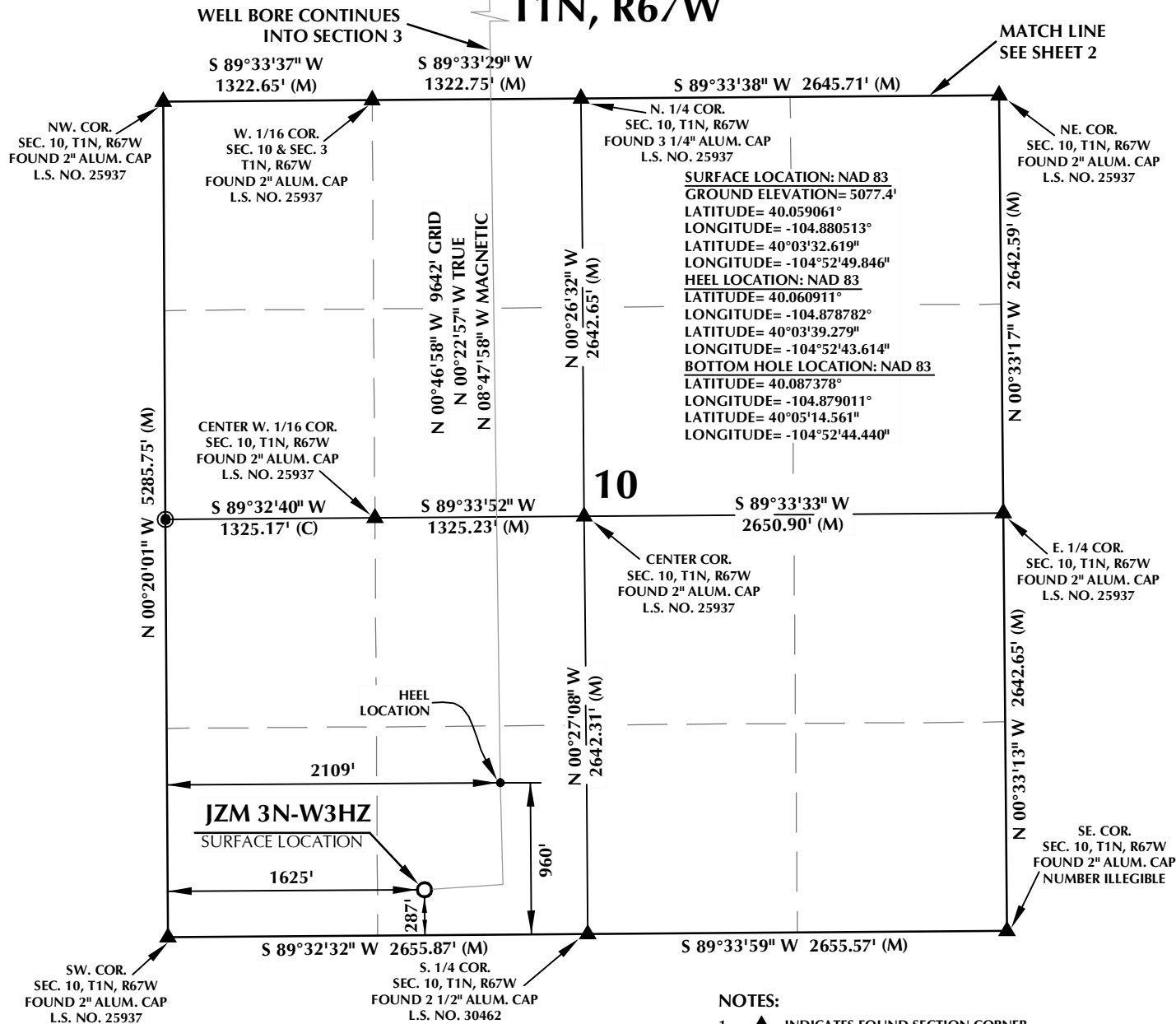


K:\WADARCO\2013\1013\_39\_WATTENBERG\_T1\_R67\_SEC\_10\PLATS\JZM\_3N-3W3HZ\_PLAT.dwg, 10/19/2015 3:51:30 PM, jld

T1N, R67W



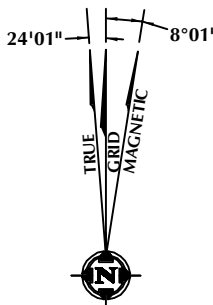
### CERTIFICATE OF SURVEYOR:

THIS IS TO CERTIFY THAT THE ABOVE PLAT WAS PREPARED FROM FIELD NOTES OF ACTUAL SURVEY MADE BY ME OR UNDER MY SUPERVISION AND THAT THE SAME ARE TRUE AND CORRECT TO THE BEST OF MY KNOWLEDGE AND BELIEF. THIS CERTIFICATE DOES NOT REPRESENT A LAND SURVEY PLAT OR IMPROVEMENT SURVEY PLAT AS DEFINED BY C.R.S. 38-51-102 AND CANNOT BE RELIED UPON TO DETERMINE OWNERSHIP.

JACOB I. DUNHAM  
PROFESSIONAL LAND SURVEYOR  
COLORADO REGISTRATION NUMBER 148459

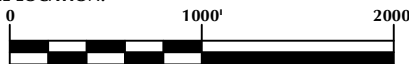
NOTICE:  
ACCORDING TO COLORADO STATE LAW YOU MUST COMMENCE ANY LEGAL ACTION BASED UPON ANY DEFECT IN THIS SURVEY WITHIN THREE YEARS AFTER YOU FIRST DISCOVER SUCH DEFECT. IN NO EVENT MAY ANY ACTION BASED UPON ANY DEFECT IN THIS SURVEY BE COMMENCED MORE THAN TEN YEARS FROM THE DATE ON THE CERTIFICATION SHOWN HEREON.

NOTE:  
MAGNETIC NORTH IS CURRENT AS OF 10/12/2015.  
MAGNETIC NORTH CHANGES WEST 0°06' PER YEAR.



### NOTES:

- ▲ INDICATES FOUND SECTION CORNER
- INDICATES CALCULATED CORNER
- ELEVATION BASED ON NAVD88 (GEOID12B)
- BASIS OF BEARING DERIVED FROM COLORADO COORDINATE SYSTEM 1983 NORTH ZONE UNLESS OTHERWISE NOTED.
- ALL MEASURED DISTANCES ARE GRID. COMBINED SCALE FACTOR: .99972303
- OPERATOR: ROB WILSON / PDOP = 1.3
- SEE ADDENDUM TO WELL LOCATION CERTIFICATE FOR EXISTING IMPROVEMENTS WITHIN 500' OF THE WELL PAD.
- WELL FOOTAGES ARE MEASURED AT RIGHT ANGLES TO THE SECTION LINES.
- THE BOTTOM OF HOLE BEARS N00°46'58"W, 9642' FROM THE HEEL LOCATION.



### WELL PAD - JZM 3N-W3HZ

JZM 3N-W3HZ  
WELL LOCATION CERTIFICATE  
287' FSL & 1625' FWL SESW (SURFACE)  
960' FSL & 2109' FWL SESW (HEEL)  
LOCATED IN SECTION 10  
50' FNL & 2086' FWL NENW (BOTTOM)  
LOCATED IN SECTION 3  
T1N, R67W, 6TH P.M.  
WELD COUNTY, COLORADO

Kerr-McGee Oil &  
Gas Onshore L.P.  
1099 18th Street  
Denver, Colorado 80202



### CONSULTING, LLC

SHERIDAN OFFICE  
1095 Saberton Avenue  
Sheridan, Wyoming 82801  
Phone 307-674-0609

LOVELAND OFFICE  
1635 Foxtrail Drive, Suite 204  
Loveland, Colorado 80538  
Phone 970-776-4331

DRAFTED BY:	LMO	CHECKED BY:	JID	SHEET NO:
DATE DRAFTED:	9/18/15	DATE SURVEYED:	10/12/15	1
REVISED:	10/16/15	FILE NAME:	13-39	1 OF 2

NW. COR.  
SEC. 3, T1N, R67W  
FOUND 2" ALUM. CAP  
L.S. NO. 25937

50'  
BOTTOM OF HOLE  
50' FNL & 2086' FWL

T1N, R67W

NE. COR.  
SEC. 3, T1N, R67W  
FOUND 2 1/2" ALUM. CAP  
L.S. NO. 24657

S 89°40'03" W 2625.30' (M)

S 89°40'00" W 2634.19' (M)

N. 1/4 COR.  
SEC. 3, T1N, R67W  
FOUND 3 1/4" ALUM. CAP  
L.S. NO. 13258

SURFACE LOCATION: NAD 83  
GROUND ELEVATION= 5077.4'  
LATITUDE= 40.059061°  
LONGITUDE= -104.880513°  
LATITUDE= 40°03'32.619"  
LONGITUDE= -104°52'49.846"  
HEEL LOCATION: NAD 83  
LATITUDE= 40.060911°  
LONGITUDE= -104.878782°  
LATITUDE= 40°03'39.279"  
LONGITUDE= -104°52'43.614"  
BOTTOM HOLE LOCATION: NAD 83  
LATITUDE= 40.087378°  
LONGITUDE= -104.879011°  
LATITUDE= 40°05'14.561"  
LONGITUDE= -104°52'44.440"

CENTER COR.  
SEC. 3, T1N, R67W  
FOUND REBAR

E. 1/4 COR.  
SEC. 3, T1N, R67W  
FOUND 2" ALUM. CAP  
L.S. NO. 25937

W. 1/4 COR.  
SEC. 3, T1N, R67W  
FOUND 2" ALUM. CAP  
L.S. NO. 25937

S 89°34'08" W  
2628.46' (M)

S 89°33'50" W  
2652.77' (M)

3

N 00°46'58" W 9642' GRID  
N 00°22'57" W TRUE  
N 08°47'58" W MAGNETIC

W. 1/16 COR.  
SEC. 3 & SEC. 10  
T1N, R67W  
FOUND 2" ALUM. CAP  
L.S. NO. 25937

S. 1/4 COR.  
SEC. 3, T1N, R67W  
FOUND 3 1/4" ALUM. CAP  
L.S. NO. 25937

SE. COR.  
SEC. 3, T1N, R67W  
FOUND 2" ALUM. CAP  
L.S. NO. 25937

SW. COR.  
SEC. 3, T1N, R67W  
FOUND 2" ALUM. CAP  
L.S. NO. 25937

S 89°33'37" W  
1322.65' (M)

S 89°33'29" W  
1322.75' (M)

S 89°33'38" W 2645.71' (M)

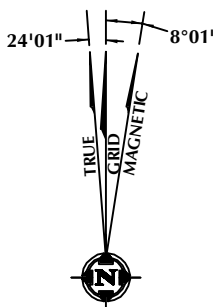
MATCH LINE  
SEE SHEET 1

### CERTIFICATE OF SURVEYOR:

THIS IS TO CERTIFY THAT THE ABOVE PLAT WAS PREPARED FROM FIELD NOTES OF ACTUAL SURVEY MADE BY ME OR UNDER MY SUPERVISION AND THAT THE SAME ARE TRUE AND CORRECT TO THE BEST OF MY KNOWLEDGE AND BELIEF. THIS CERTIFICATE DOES NOT REPRESENT A LAND SURVEY PLAT OR IMPROVEMENT SURVEY PLAT AS DEFINED BY C.R.S. 38-51-102 AND CANNOT BE RELIED UPON TO DETERMINE OWNERSHIP.

JACOB I. DUNHAM  
PROFESSIONAL LAND SURVEYOR  
COLORADO REGISTRATION NUMBER 148459

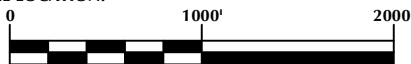
NOTICE:  
ACCORDING TO COLORADO STATE LAW YOU MUST COMMENCE ANY LEGAL ACTION BASED UPON ANY DEFECT IN THIS SURVEY WITHIN THREE YEARS AFTER YOU FIRST DISCOVER SUCH DEFECT. IN NO EVENT MAY ANY ACTION BASED UPON ANY DEFECT IN THIS SURVEY BE COMMENCED MORE THAN TEN YEARS FROM THE DATE ON THE CERTIFICATION SHOWN HEREON.



NOTE:  
MAGNETIC NORTH IS CURRENT AS OF 10/12/2015.  
MAGNETIC NORTH CHANGES WEST 0°06' PER YEAR.

### NOTES:

- ▲ INDICATES FOUND SECTION CORNER
- INDICATES CALCULATED CORNER
- ELEVATION BASED ON NAVD88 (GEOID12B)
- BASIS OF BEARING DERIVED FROM COLORADO COORDINATE SYSTEM 1983 NORTH ZONE UNLESS OTHERWISE NOTED.
- ALL MEASURED DISTANCES ARE GRID.  
COMBINED SCALE FACTOR: .99972303
- OPERATOR: ROB WILSON / PDOP = 1.3
- SEE ADDENDUM TO WELL LOCATION CERTIFICATE FOR EXISTING IMPROVEMENTS WITHIN 500' OF THE WELL PAD.
- WELL FOOTAGES ARE MEASURED AT RIGHT ANGLES TO THE SECTION LINES.
- THE BOTTOM OF HOLE BEARS N00°46'58"W, 9642' FROM THE HEEL LOCATION.



### WELL PAD - JZM 3N-W3HZ

JZM 3N-W3HZ  
WELL LOCATION CERTIFICATE  
287' FSL & 1625' FWL SESW (SURFACE)  
960' FSL & 2109' FWL SESW (HEEL)  
LOCATED IN SECTION 10  
50' FNL & 2086' FWL NENW (BOTTOM)  
LOCATED IN SECTION 3  
T1N, R67W, 6TH P.M.  
WELD COUNTY, COLORADO

Kerr-McGee Oil &  
Gas Onshore L.P.  
1099 18th Street  
Denver, Colorado 80202



### CONSULTING, LLC

SHERIDAN OFFICE  
1095 Saberton Avenue  
Sheridan, Wyoming 82801  
Phone 307-674-0609

LOVELAND OFFICE  
1635 Foxtrail Drive, Suite 204  
Loveland, Colorado 80538  
Phone 970-776-4331

DRAFTED BY:	LMO	CHECKED BY:	JID	SHEET NO:
DATE DRAFTED:	9/18/15	DATE SURVEYED:	10/12/15	2
REVISED:	10/16/15	FILE NAME:	13-39	2 OF 2