



Cement Bond Log Gamma Ray/CCL

Company EnCana Oil and Gas
Well NELSON #1
Field Wattenberg
County Weld State CO

Location: API # : 05-123-08493
1360 FSL 1510 FWL
SW NE SW
SEC 23 TWP 2N RGE 68W
Permanent Datum Ground Level Elevation 4916'
Log Measured From Kelly Bushing
Drilling Measured From 10' Above Permanent Datum
Other Services
Elevation
K.B. 4926'
D.F. 4925'
G.L. 4916'

Company EnCana Oil and Gas
Well NELSON #1
Field Wattenberg
County Weld
State CO

Date

31-OCT-2015

Run Number

Five

Depth Driller

8095'

Depth Logger

4815'

Bottom Logged Interval

4815'

Top Log Interval

4100'

Open Hole Size

7 7/8"

Type Fluid

Water

Density / Viscosity

N/A

Max. Recorded Temp.

N/A

Estimated Cement Top

See Log

Time Well Ready

Upon Arrival

Time Logger on Bottom

3:45PM

Equipment Number

WL-61

Location

Ault, CO

Recorded By

Chris Blankenhorn

Witnessed By

Carl Rayas

Borehole Record

Run Number

Bit

From

To

Size

Weight

From

To

Tubing Record

Run Number

Bit

From

To

Size

Weight

From

To

Casing Record

Size

Wgt/Ft

Top

Bottom

Surface String

8 5/8"

24#

Surface

425'

Prot. String

4 1/2"

11.6#

Surface

7910'

Production String

4 1/2"

11.6#

Surface

7910'

Liner

4 1/2"

11.6#

Surface

7910'

Liner

4 1/2"

11.6#

Surface

7910'

<<< Fold Here >>>

All interpretations are opinions based on inferences from electrical or other measurements and we cannot and do not guarantee the accuracy or correctness of any interpretation, and we shall not, except in the case of gross or willful negligence on our part, be liable or responsible for any loss, costs, damages, or expenses incurred or sustained by anyone resulting from any interpretation made by any of our officers, agents or employees. These interpretations are also subject to our general terms and conditions set out in our current Price Schedule.

Comments

Thank you for using Cutters Wireline!

Free Pipe Amplitude = 82mV

Log correlated to KB.

Calibration Report

Database File: nelson_1.db
Dataset Pathname: pass63
Dataset Creation: Sat Oct 31 15:57:19 2015 by Log Std Casedhole 09061

Gamma Ray Calibration Report

SHOP CALIBRATION

Tue Oct 22 13:11:35 2013

	Counts/Sec.	Gain	Offset	Jig	Units
Background	34.8				cps
Calibrator	273.0				cps
		0.8394			GAPI/cps

PRIMARY VERIFICATION

Tue Oct 22 13:14:26 2013

Background	29.3				cps
Calibrator	226.5				cps
Difference				197.2	GAPI

BEFORE SURVEY VERIFICATION

Background	0.0				cps
Calibrator	0.0				cps
Difference				0.0	GAPI

AFTER SURVEY VERIFICATION

Background	0.0				cps
Calibrator	0.0				cps
Difference				0.0	GAPI

Cement Bond Log Calibration Report

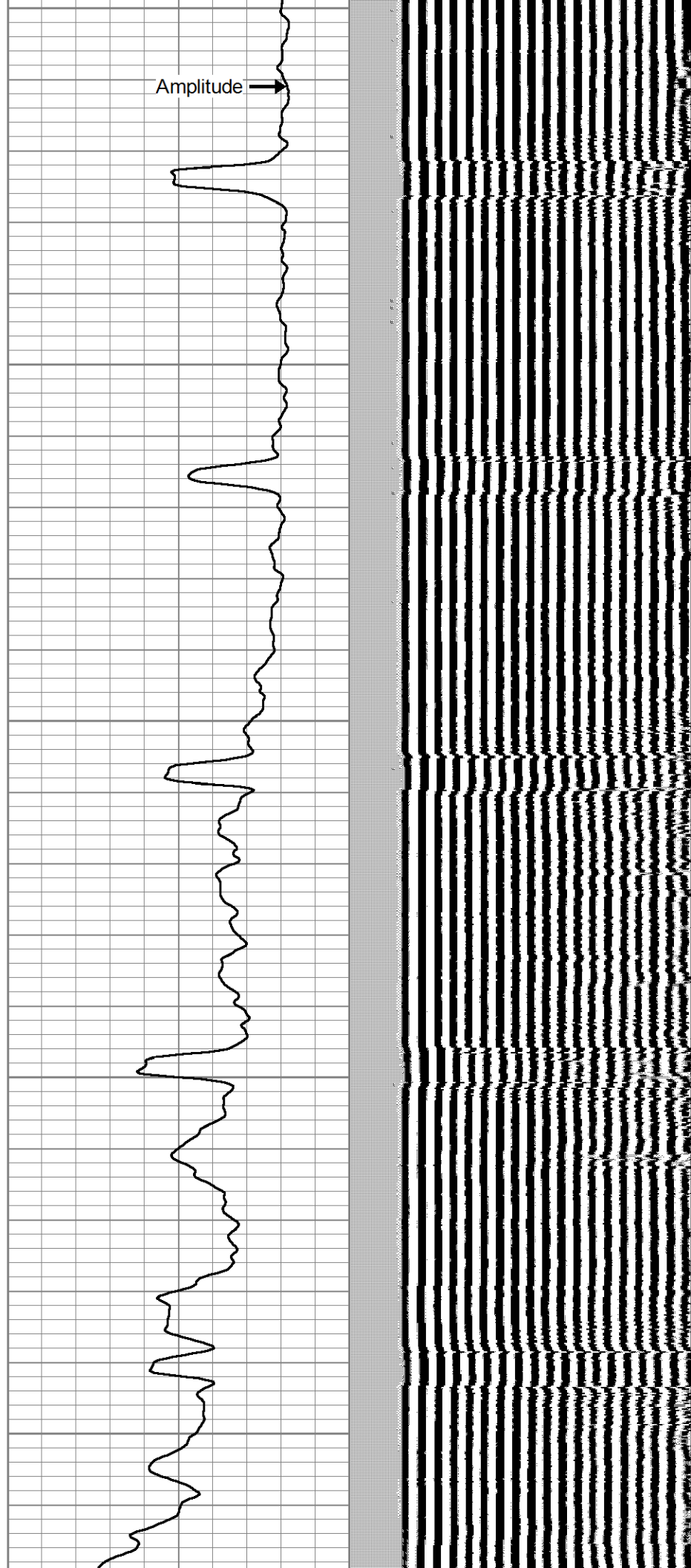
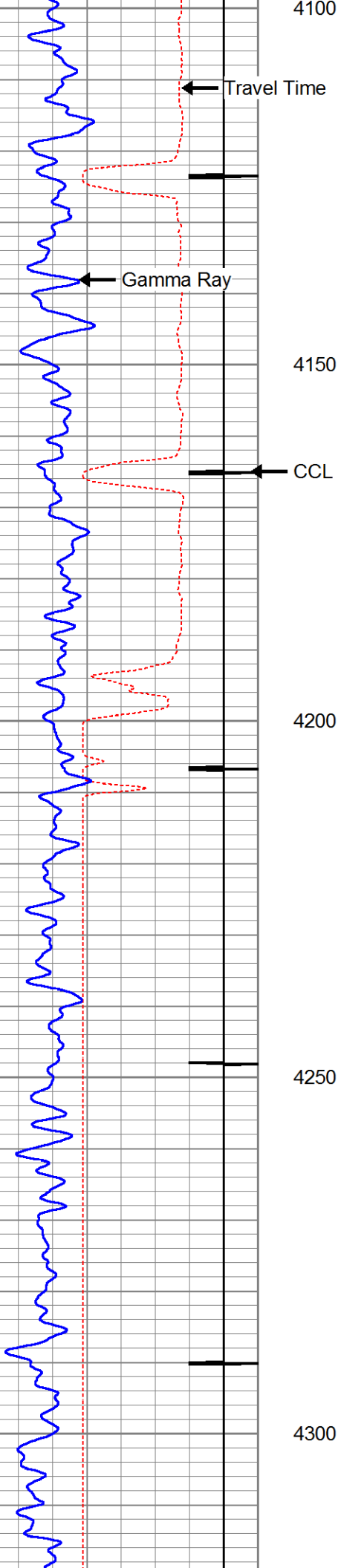
Serial Number:	275			
Tool Model:	Probe			
Performed:	Sat Oct 31 06:58:16 2015			
Depth:	3700.43	ft		
Casing Diameter:	4.5	in		
	3' Spacing		5' Spacing	
Signal Zero:	0.25		0.25	mV
Calibrated Amplitude:	81.1961		81.1961	mV
Reading at Signal Zero:	0.0270508		0.0275146	V
Reading in Free Pipe:	0.908374		0.864063	V
Gain:	91.8461		96.7621	
Offset:	-2.23451		-2.41237	

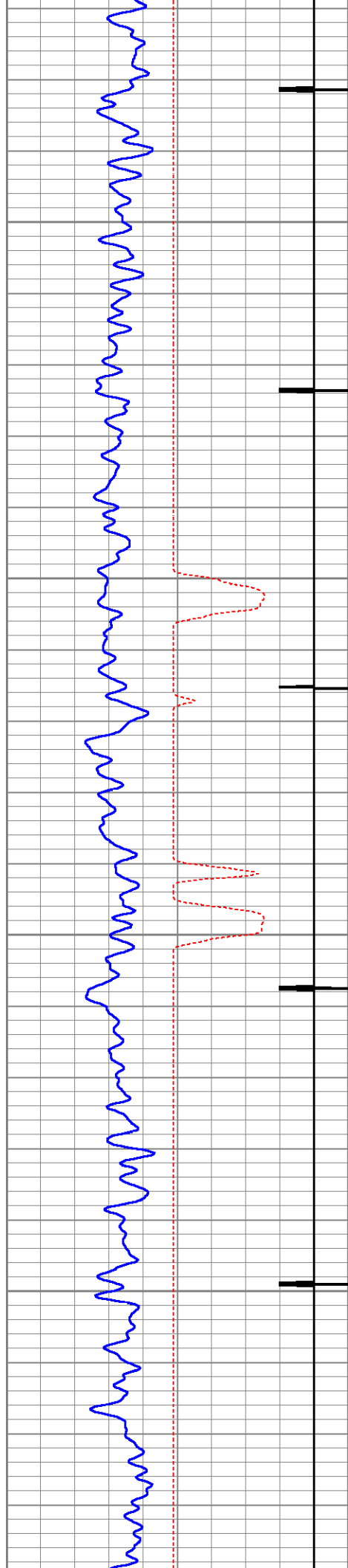


Main Pass @ 0 PSI

Database File:	nelson_1.db
Dataset Pathname:	pass63
Presentation Format:	cbl_dr
Dataset Creation:	Sat Oct 31 15:57:19 2015 by Log Std Casedhole 09061
Charted by:	Depth in Feet scaled 1:240

325	Travel Time (usec)	225	0	Amplified Amplitude (mV)	10	200	Variable Density	1200
9	Collar Locator	-1	0	Amplitude (mV)	100			
0	Gamma Ray (GAPI)	250						



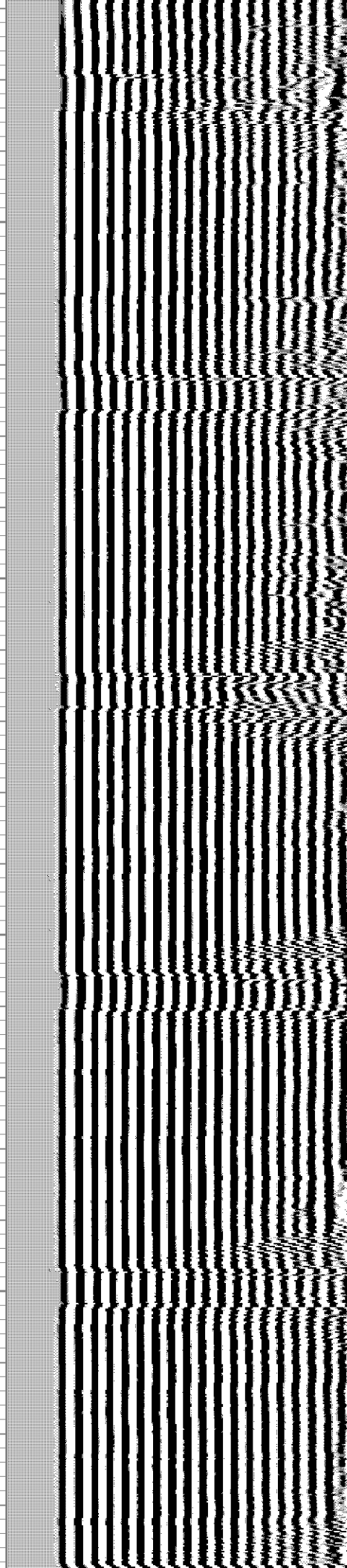


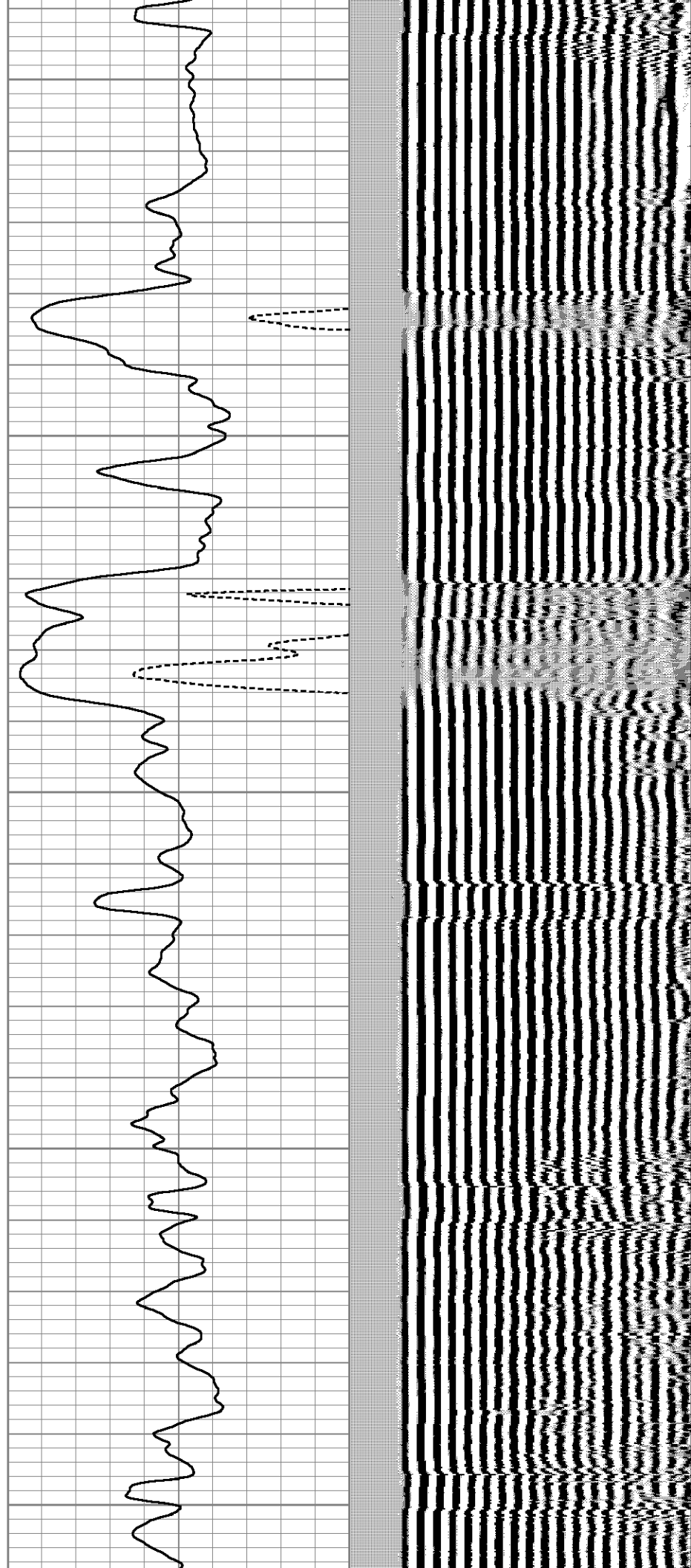
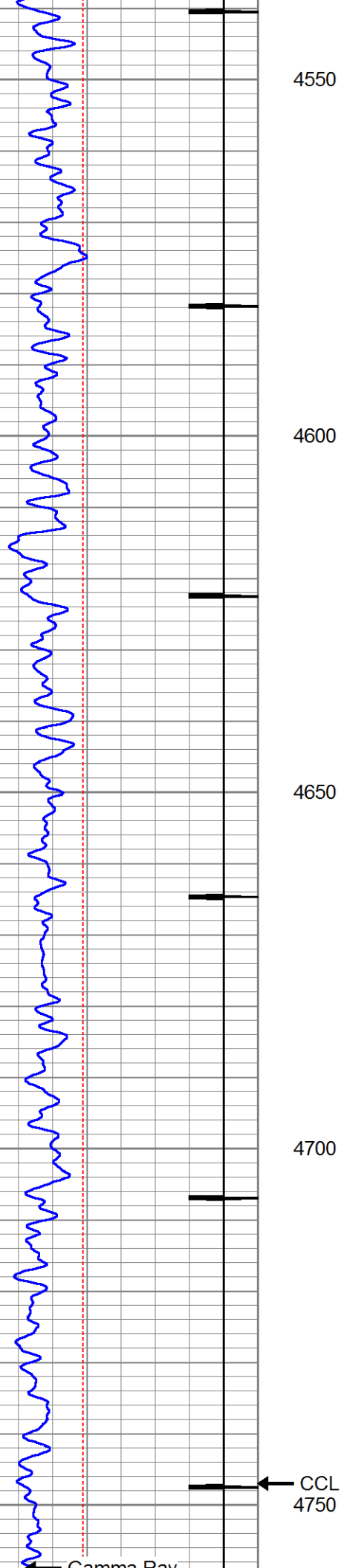
4350

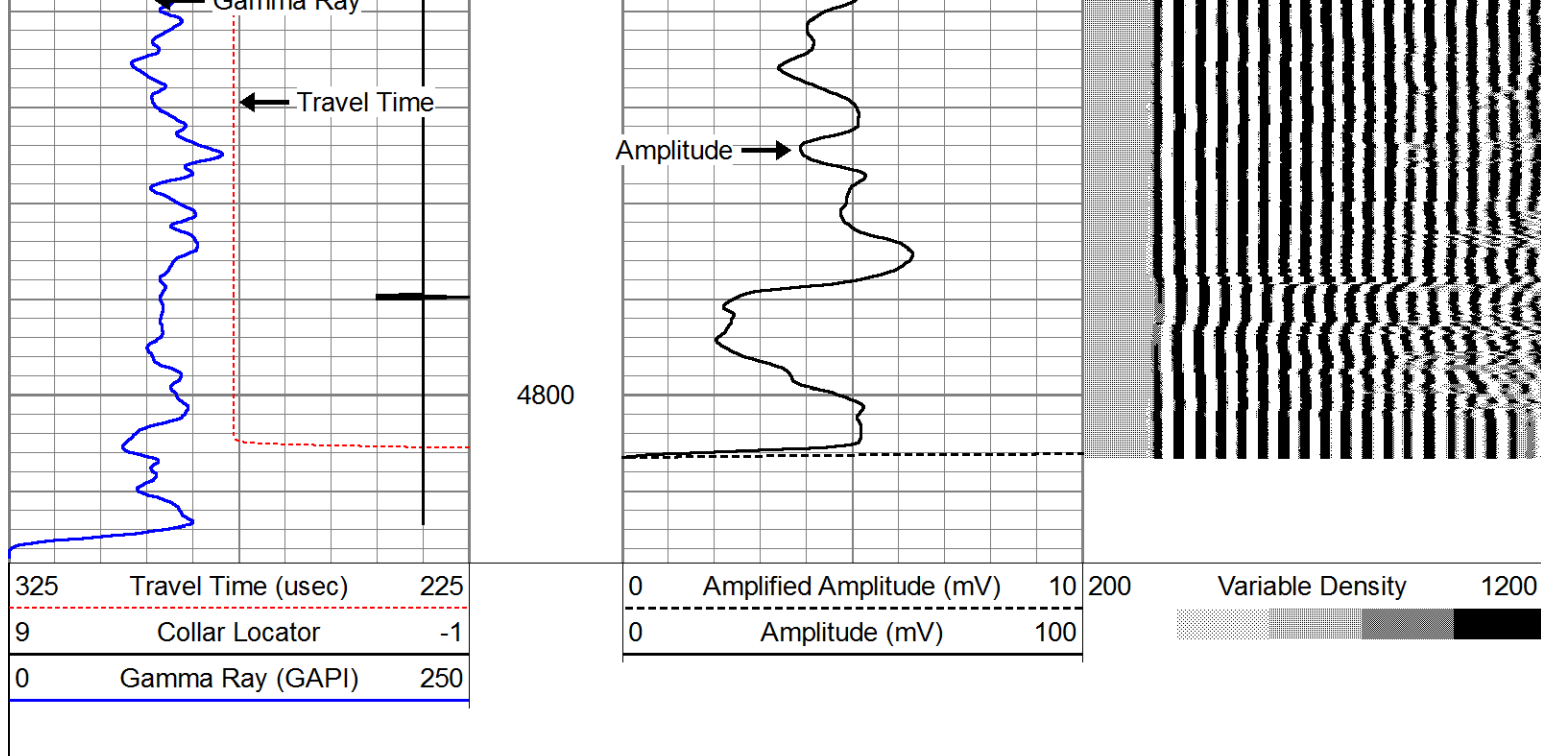
4400

4450

4500

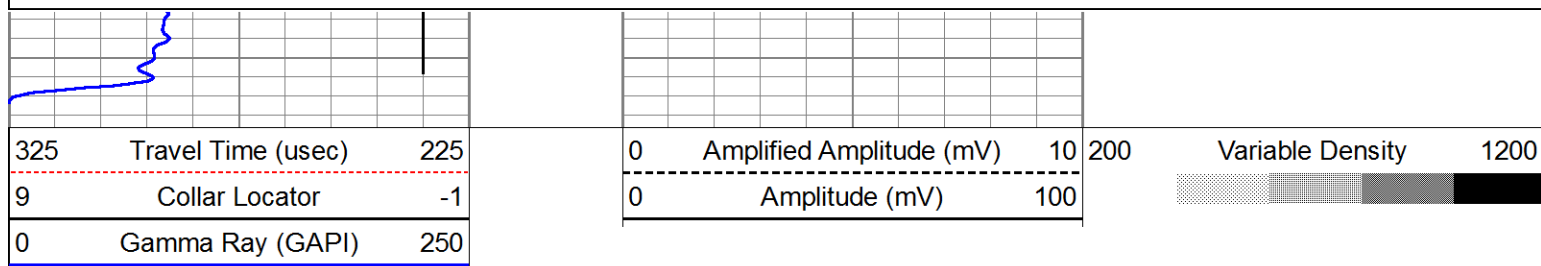
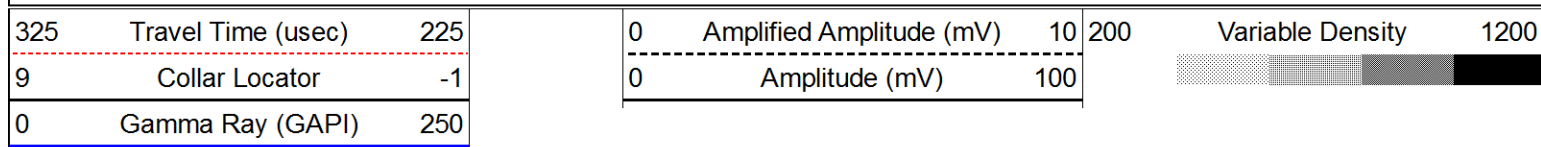




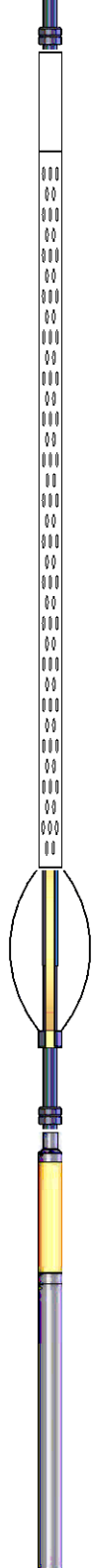


Repeat Pass @ 0 PSI

Database File: nelson_1.db
 Dataset Pathname: pass62
 Presentation Format: cbl_dr
 Dataset Creation: Sat Oct 31 15:53:30 2015 by Log Std Casedhole 09061
 Charted by: Depth in Feet scaled 1:240



Sensor	Offset (ft)	Schematic	Description	Len (ft)	OD (in)	Wt (lb)
			1.4375CHD Titan Cable Head 1 7/16	1.00	1.44	10.00
			PTS275	2.83	2.75	

WVF3	11.79		CBL-Probe (275) Probe 2.75" Dual Receiver Bond	8.92	2.75	60.00
WVF5	10.79					
			PTS275	2.83	2.75	
CCL	3.92					
GR	2.42		GR-GCT_C3 (FW1304-53) Probe Digital Gamma CCL Corrosion	4.77	2.75	50.00
<div>Dataset: nelson_1.db: field/well/run1/pass63</div> <div>Total Length: 20.35 ft</div> <div>Total Weight: 120.00 lb</div> <div>O.D.: 2.75 in</div>						



Company	EnCana Oil and Gas
Well	NELSON #1
Field	Wattenberg
County	Weld
State	CO