



Cement Bond Log  
Gamma Ray/CCL

Company EnCana Oil and Gas  
Well NELSON #1  
Field Wattenberg  
County Weld State CO

Company	EnCana Oil and Gas	Location:  1360 FSL 1510 FWL SW NE SW SEC 23 TWP 2N RGE 68W	Other Services	
Well	NELSON #1			
Field	Wattenberg			
County	Weld			
State	CO			
Permanent Datum	Ground Level	Elevation	4916'	Elevation K.B. 4926' D.F. 4925' G.L. 4916'
Log Measured From	Kelly Bushing			
Drilling Measured From	10' Above Permanent Datum			

Date 30-OCT-2015

Run Number	Three
Depth Driller	8095'
Depth Logger	5200'
Bottom Logged Interval	5200'
Top Log Interval	4000'
Open Hole Size	7 7/8"
Type Fluid	Water
Density / Viscosity	N/A
Max. Recorded Temp.	N/A
Estimated Cement Top	See Log
Time Well Ready	Upon Arrival
Time Logger on Bottom	7:00AM
Equipment Number	WL-61
Location	Ault, CO
Recorded By	Chris Blankenhorn
Witnessed By	Carl Rayas

Borehole Record				Tubing Record			
Run Number	Bit	From	To	Size	Weight	From	To
Casing Record	Size		Wgt/Ft		Top		Bottom
Surface String	8 5/8"		24#		Surface		425'
Prod. String							
Production String	4 1/2"		11.6#		Surface		7910'
Liner							

>>> Fold Here >>>

All interpretations are opinions based on inferences from electrical or other measurements and we cannot and do not guarantee the accuracy or correctness of any interpretation, and we shall not, except in the case of gross or willful negligence on our part, be liable or responsible for any loss, costs, damages, or expenses incurred or sustained by anyone resulting from any interpretation made by any of our officers, agents or employees. These interpretations are also subject to our general terms and conditions set out in our current Price Schedule.

Comments

Thank you for using Cutters Wireline!

Free Pipe Amplitude = 82mV

Log correlated to KB.

Calibration Report

Database File: nelson\_1.db  
Dataset Pathname: pass46.1  
Dataset Creation: Fri Oct 30 07:39:05 2015 by Calc Std Casedhole 09061

Serial Number: FW1304-53  
Tool Model: GCT\_C3  
Performed: Tue Oct 22 13:11:35 2013

Calibrator Value: 200.0 GAPI

Background Reading: 34.8 cps  
Calibrator Reading: 273.0 cps

Sensitivity: 0.8394 GAPI/cps

### Cement Bond Log Calibration Report

Serial Number: 275  
Tool Model: Probe  
Performed: Fri Oct 30 07:04:17 2015

Depth: 3287.13 ft  
Casing Diameter: 4.5 in

3' Spacing 5' Spacing

Signal Zero: 0.25 mV  
Calibrated Amplitude: 81.1961 mV  
Reading at Signal Zero: 0.0289795 V  
Reading in Free Pipe: 0.871045 V

Gain: 92.92  
Offset: -2.53574

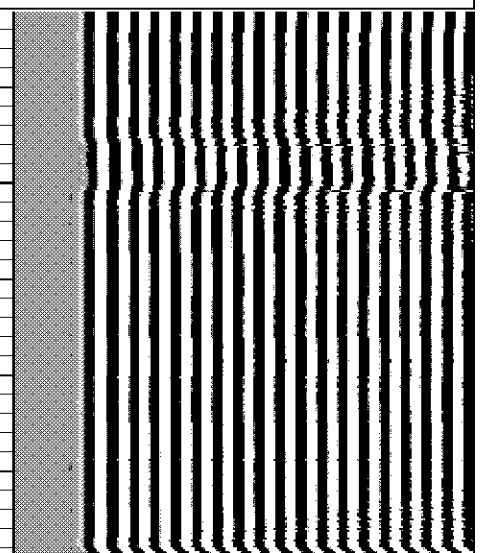
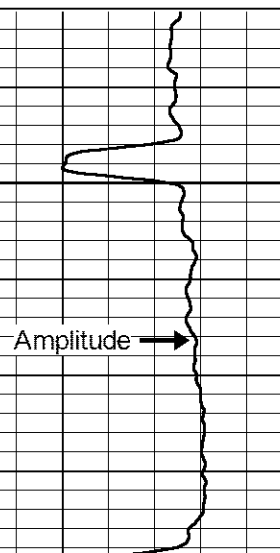
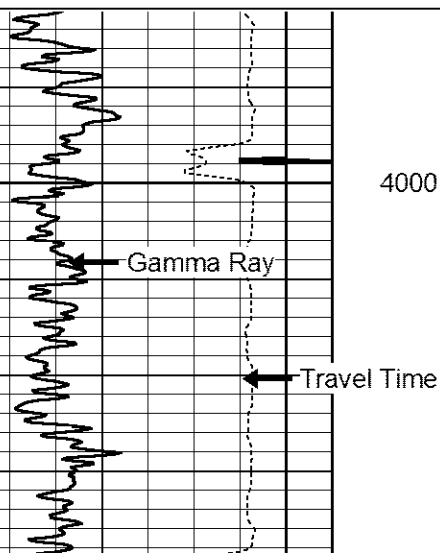


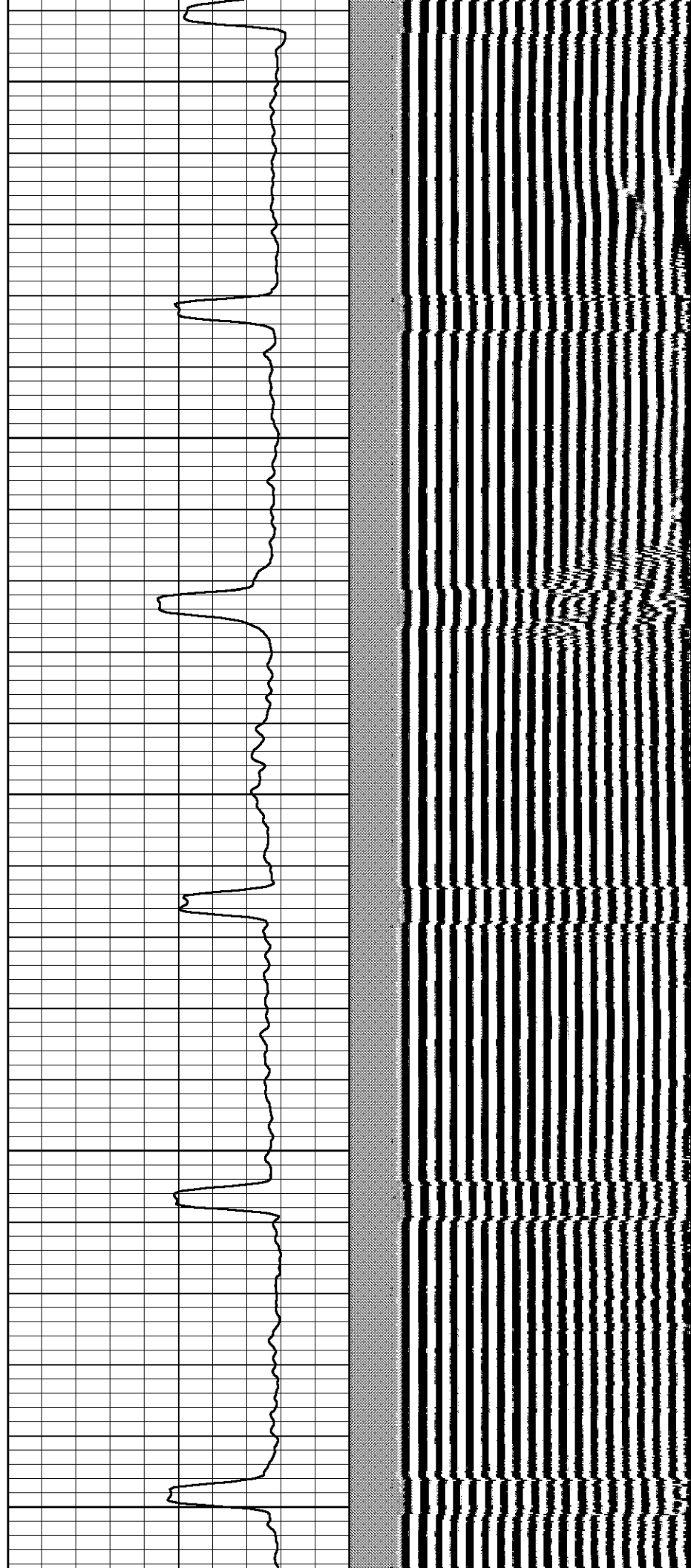
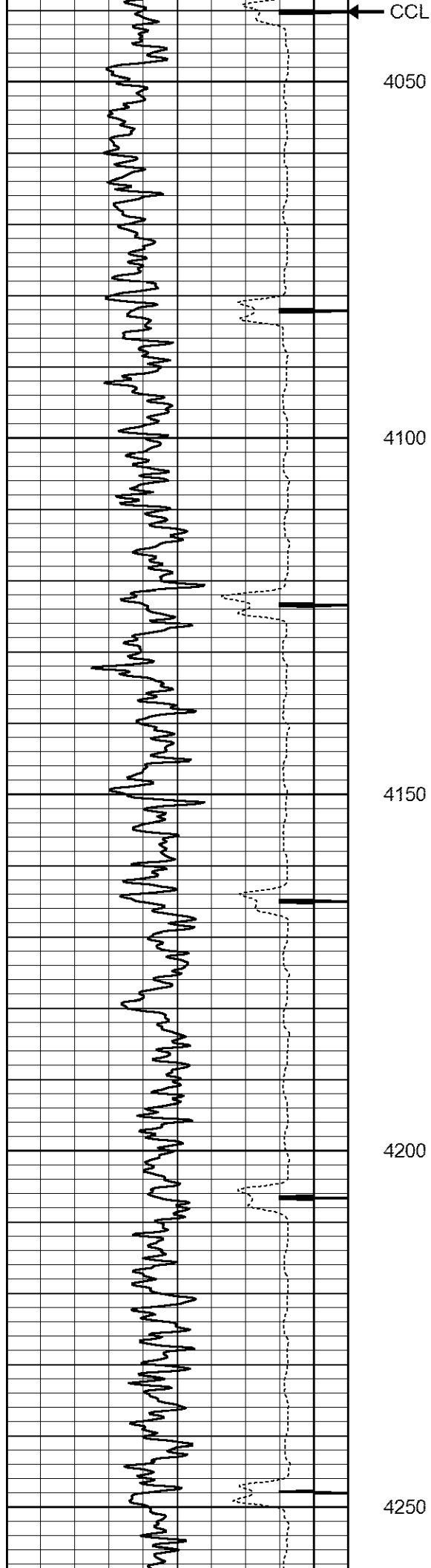
## Main Pass @ 0 PSI

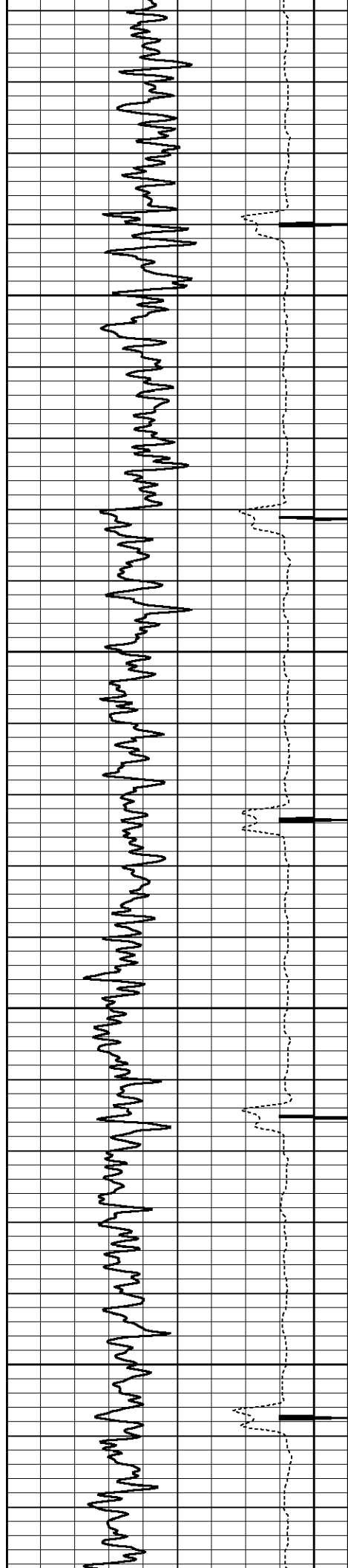
Database File: nelson\_1.db  
Dataset Pathname: pass46.1  
Presentation Format: cbl\_dr  
Dataset Creation: Fri Oct 30 07:39:05 2015 by Calc Std Casedhole 09061  
Charted by: Depth in Feet scaled 1:240

325	Travel Time (usec)	225
9	Collar Locator	-1
0	Gamma Ray (GAPI)	250

0	Amplified Amplitude (mV)	10	200	Variable Density	1200
0	Amplitude (mV)	100			





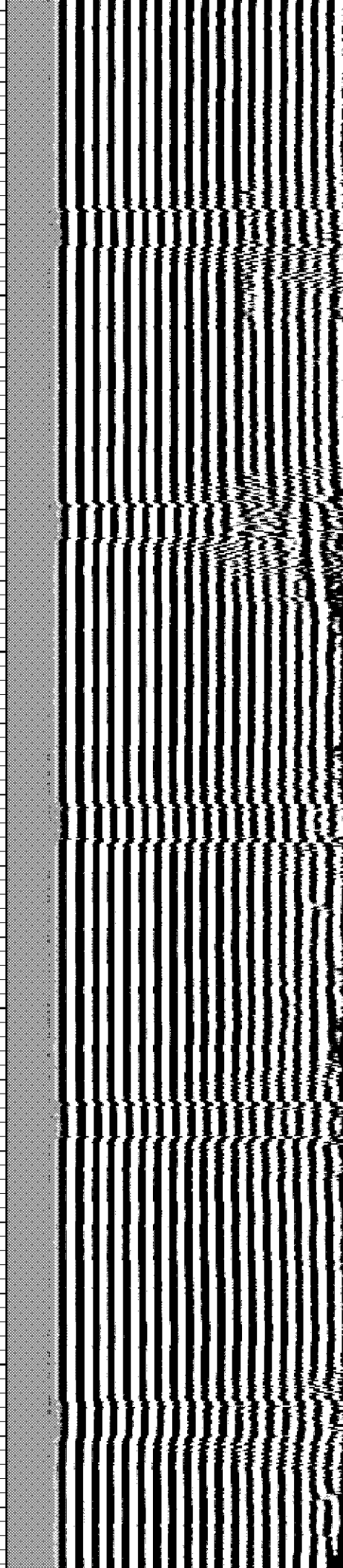
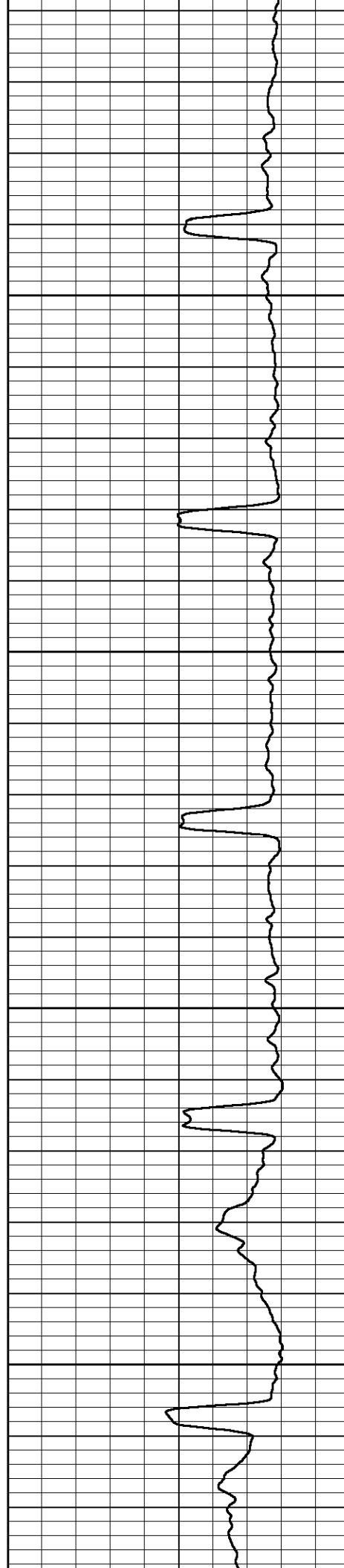


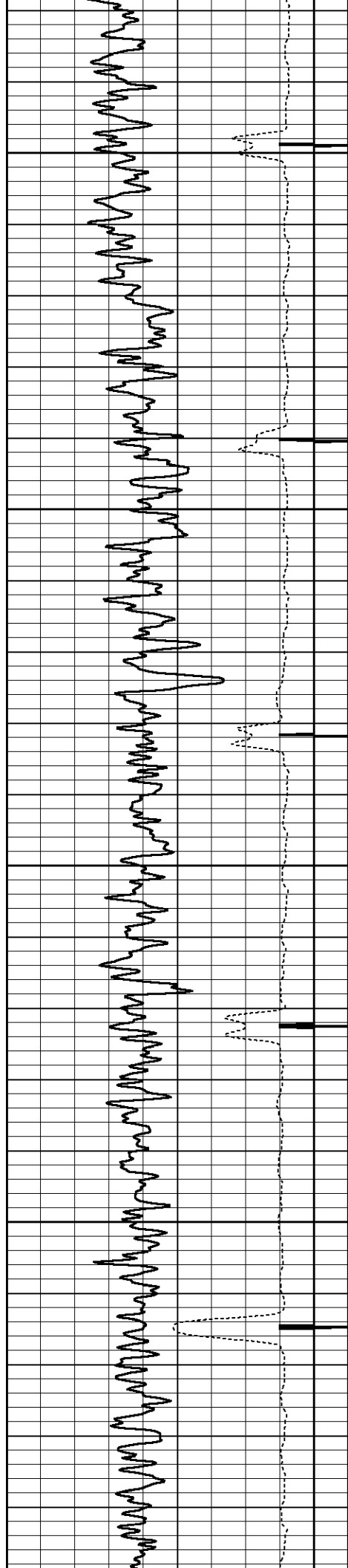
4300

4350

4400

4450



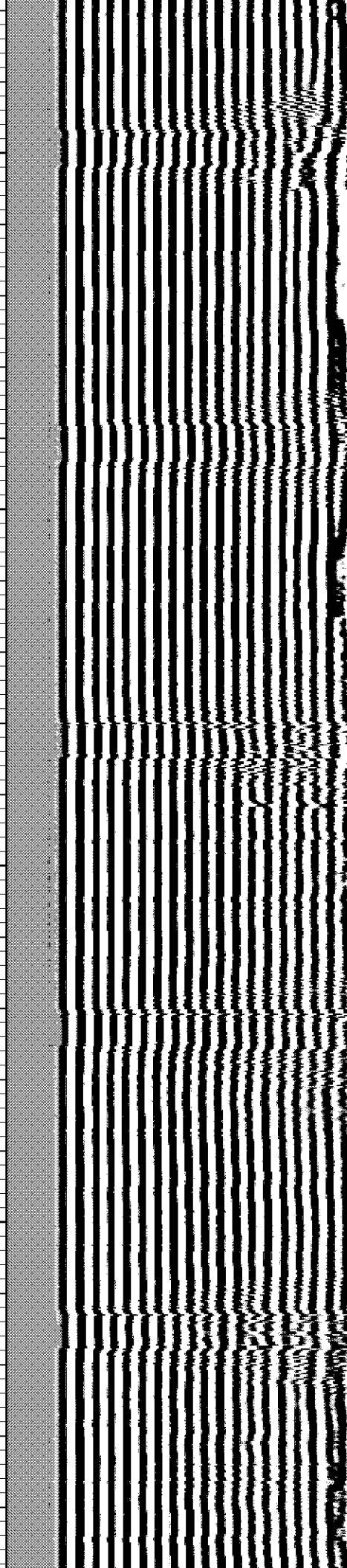
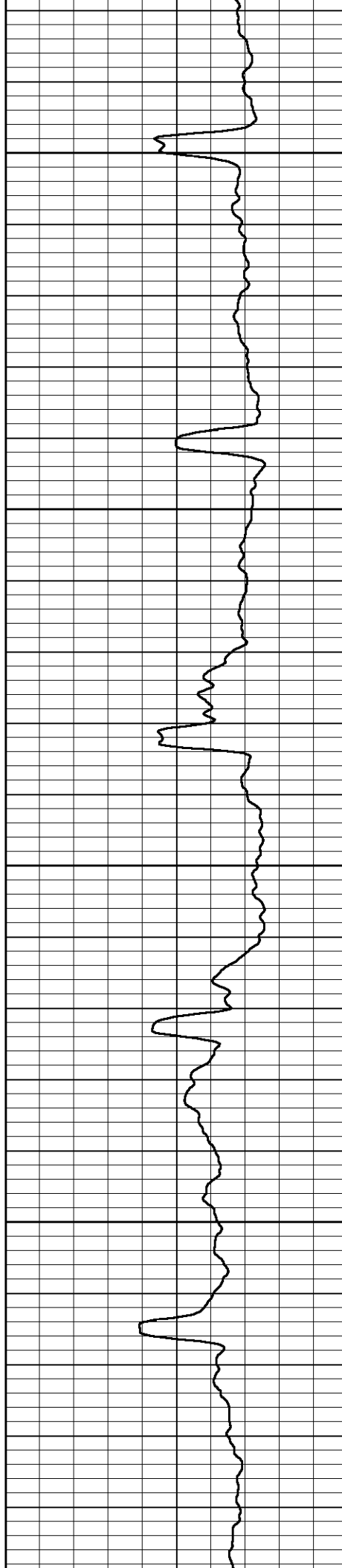


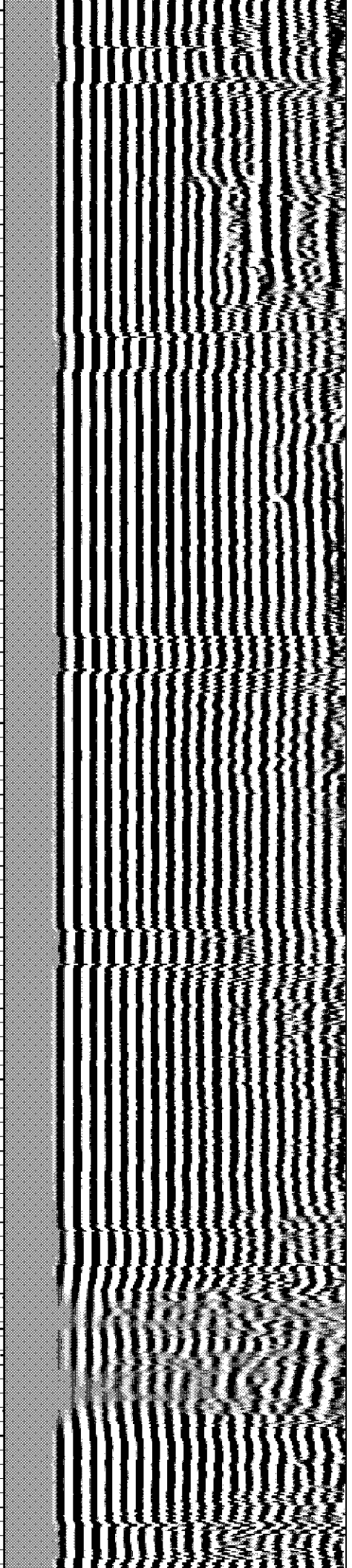
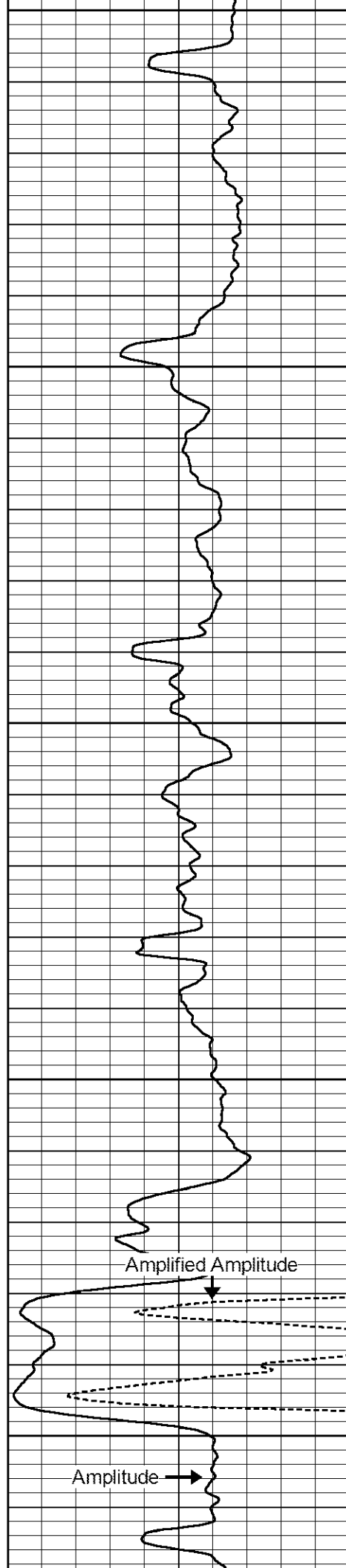
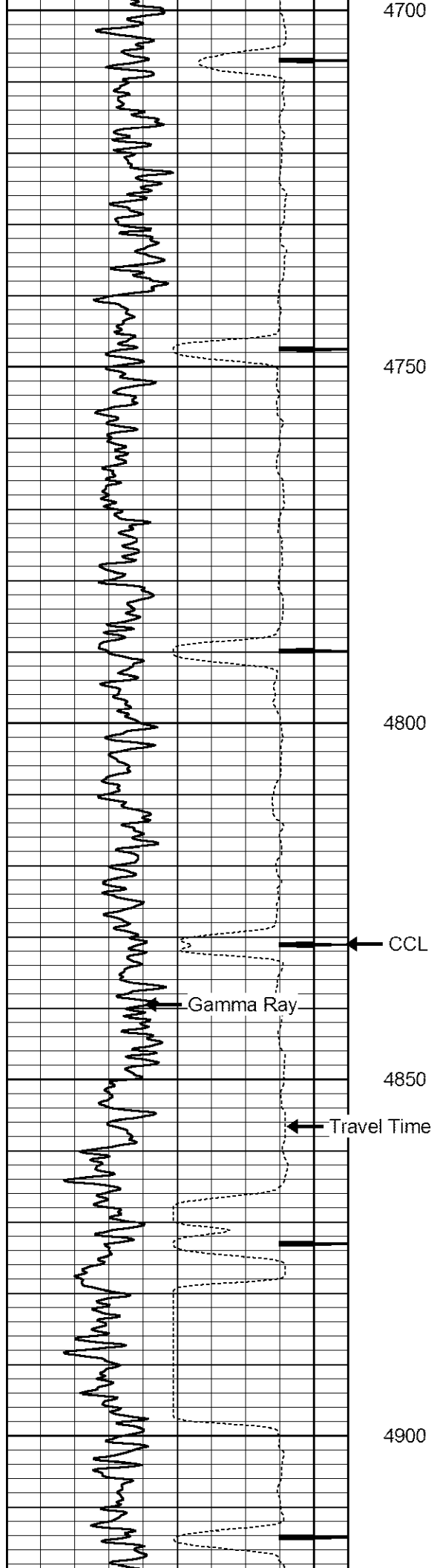
4500

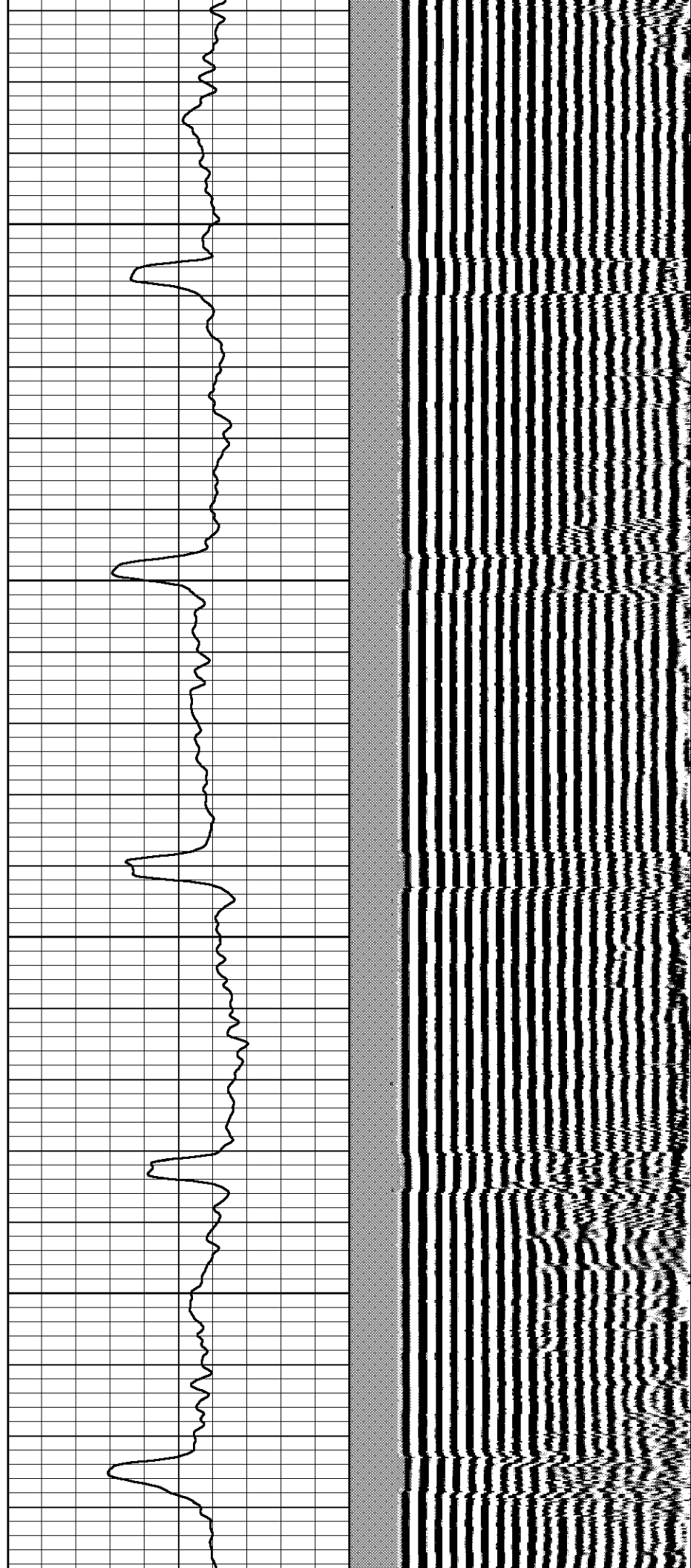
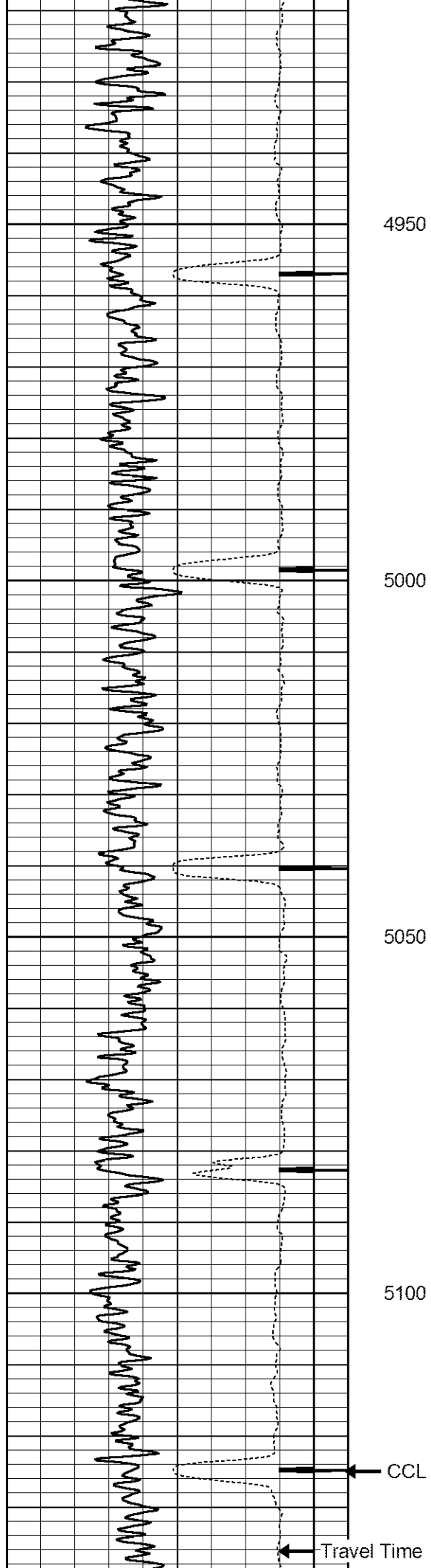
4550

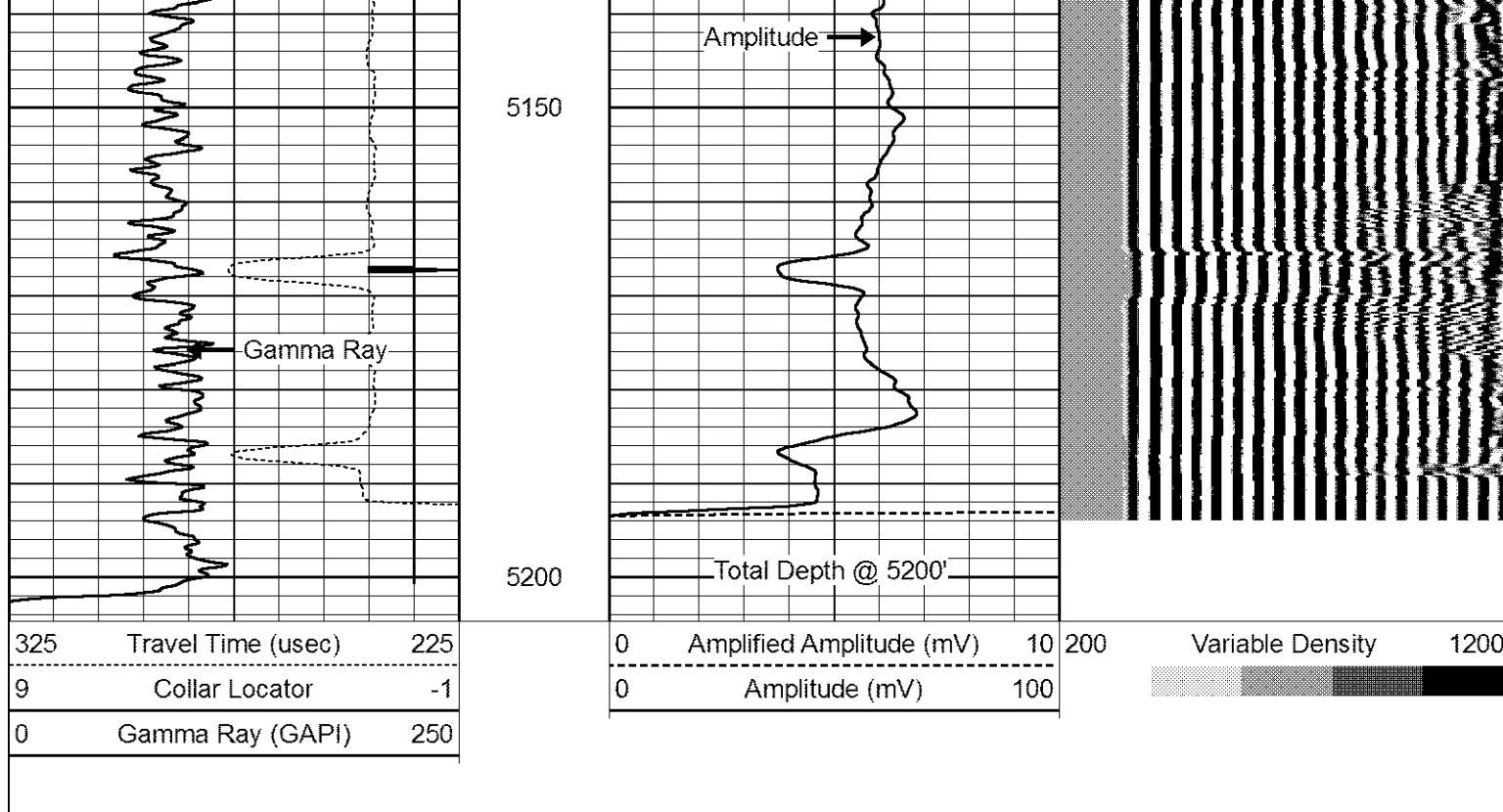
4600

4650



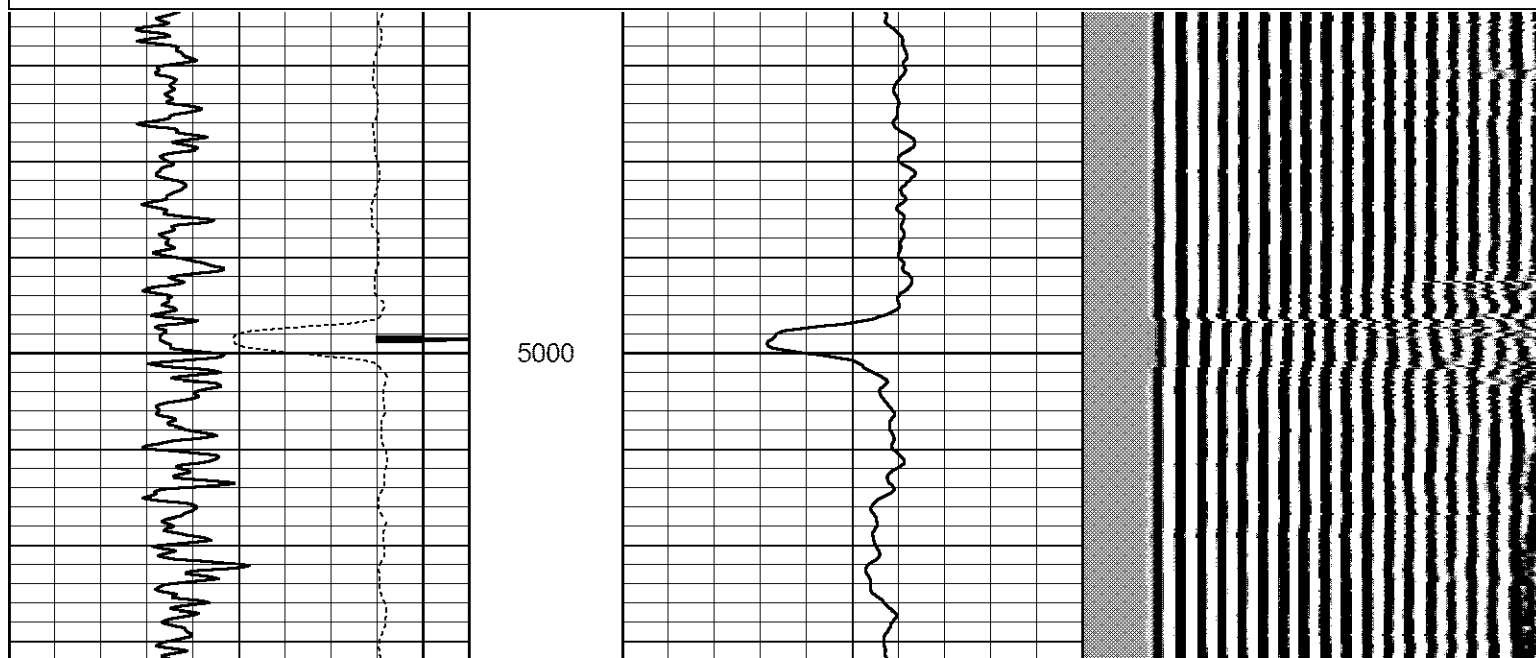
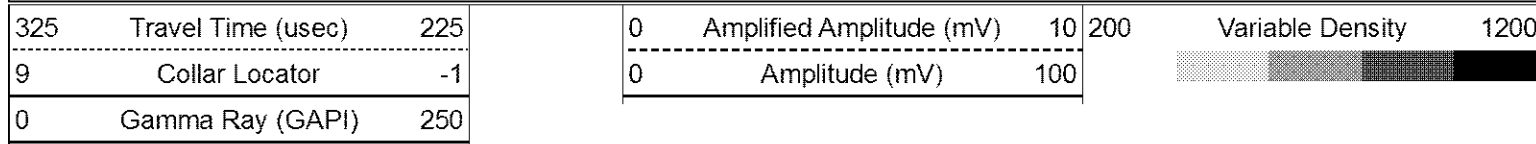




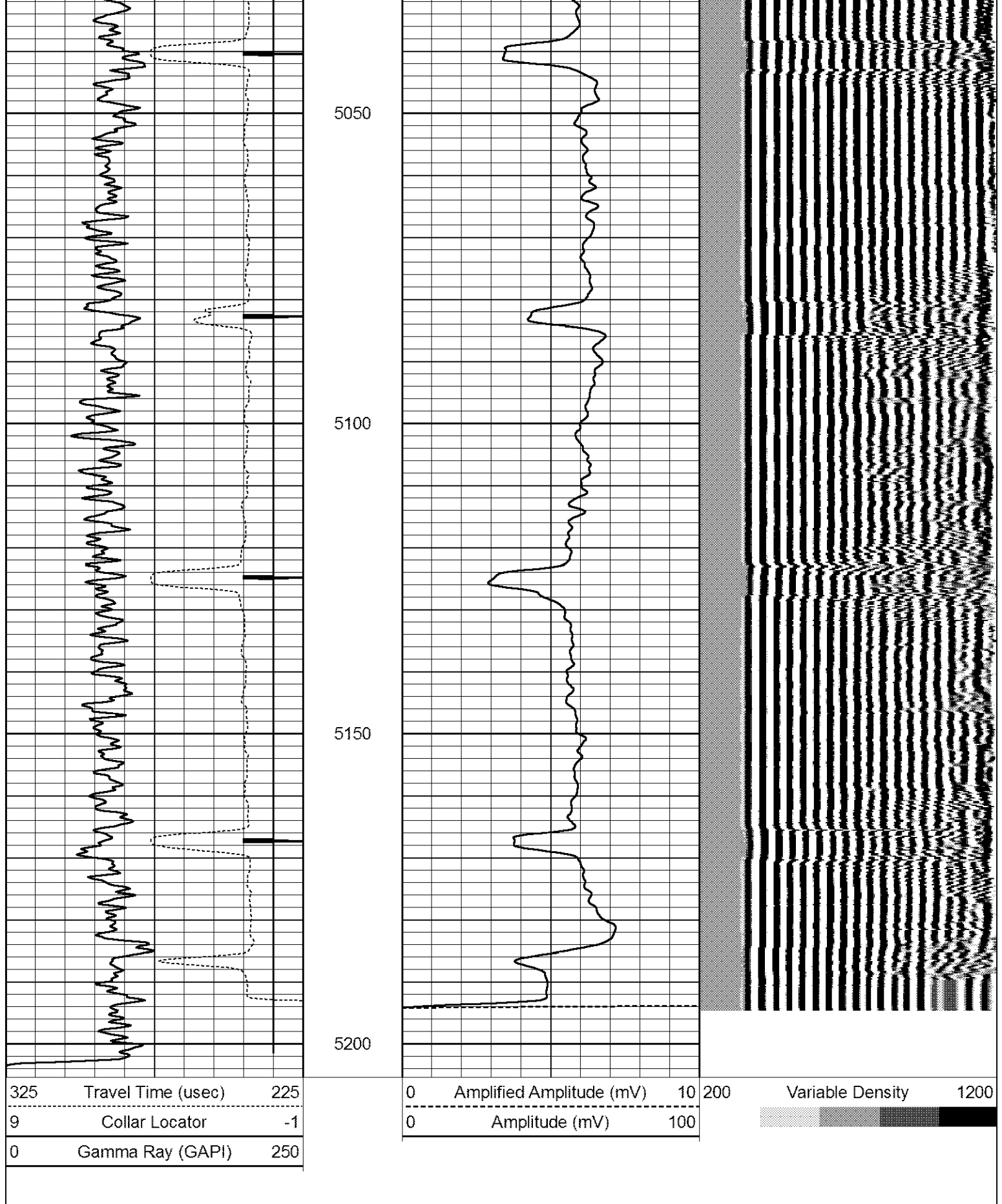


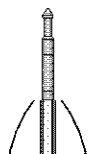
Repeat Pass @ 0 PSI

Database File: nelson\_1.db  
 Dataset Pathname: pass45.1  
 Presentation Format: cbl\_dr  
 Dataset Creation: Fri Oct 30 07:39:42 2015 by Calc Std Casedhole 09061  
 Charted by: Depth in Feet scaled 1:240







Sensor	Offset (ft)	Schematic	Description	Len (ft)	OD (in)	Wt (lb)
			<div>1.4375CHD</div> <div>Titan Cable Head 1 7/16</div>	1.00	1.44	10.00

			PTS275	2.83	2.75	
WVF3	11.79					
WVF5	10.79		CBL-Probe (275) Probe 2.75" Dual Receiver Bond	8.92	2.75	60.00
			PTS275	2.83	2.75	
CCL	3.92					
GR	2.42		GR-GCT_C3 (FW1304-53) Probe Digital Gamma CCL Corrosion	4.77	2.75	50.00
Dataset: nelson_1.db: field/well/run1/pass46.1 Total Length: 20.35 ft Total Weight: 120.00 lb O.D. 2.75 in						



Company  
Well  
Field

EnCana Oil and Gas  
NELSON #1  
Wattenberg



Field  
County  
State

Wattenberg  
Weld  
CO