



Cement Bond Log Gamma Ray/CCL

Company EnCana Oil and Gas
Well NELSON #1
Field Wattenberg
County Weld State CO

Company EnCana Oil and Gas
Well NELSON #1
Field Wattenberg
County Weld
State CO

Location: API #: 05-123-08493
1360 FSL 1510 FWL
SW NE SW
SEC 23 TWP 2N RGE 68W
Permanent Datum Ground Level Elevation 4916'
Log Measured From Kelly Bushing
Drilling Measured From 10' Above Permanent Datum
Other Services
Elevation
K.B. 4926'
D.F. 4925'
G.L. 4916'

Date 28-OCT-2015

Run Number	One
Depth Driller	8095'
Depth Logger	7185'
Bottom Logged Interval	7185'
Top Log Interval	6000'
Open Hole Size	7 7/8"
Type Fluid	Water
Density / Viscosity	N/A
Max. Recorded Temp.	N/A
Estimated Cement Top	6816'
Time Well Ready	Upon Arrival
Time Logger on Bottom	7-16
Equipment Number	WL-61
Location	Ault, CO
Recorded By	DEVEN DELAPJUR
Witnessed By	Carl Rayas

Borehole Record				Tubing Record			
Run Number	Bit	From	To	Size	Weight	From	To

Casing Record	Size	Wgt/Ft	Top	Bottom
Surface String	8 5/8"	24#	Surface	425'
Prot. String				
Production String	4 1/2"	11.6#	Surface	7910'
Liner				

<<< Fold Here >>>

All interpretations are opinions based on inferences from electrical or other measurements and we cannot and do not guarantee the accuracy or correctness of any interpretation, and we shall not, except in the case of gross or willful negligence on our part, be liable or responsible for any loss, costs, damages, or expenses incurred or sustained by anyone resulting from any interpretation made by any of our officers, agents or employees. These interpretations are also subject to our general terms and conditions set out in our current Price Schedule.

Comments

Thank you for using Cutters Wireline!

Free Pipe Amplitude = 82mV

Log correlated to KB.

Calibration Report

Database File: nelson_1.db
Dataset Pathname: pass33
Dataset Creation: Wed Oct 28 07:37:45 2015 by Log Std Casedhole 09061

SHOP CALIBRATION

Tue Oct 22 13:11:35 2013

	Counts/Sec.	Gain	Offset	Jig	Units
Background	34.8				cps
Calibrator	273.0				cps
		0.8394			GAPI/cps

PRIMARY VERIFICATION

Tue Oct 22 13:14:26 2013

Background	29.3			cps
Calibrator	226.5			cps
Difference			197.2	GAPI

BEFORE SURVEY VERIFICATION

Background	0.0			cps
Calibrator	0.0			cps
Difference			0.0	GAPI

AFTER SURVEY VERIFICATION

Background	0.0			cps
Calibrator	0.0			cps
Difference			0.0	GAPI

Cement Bond Log Calibration Report

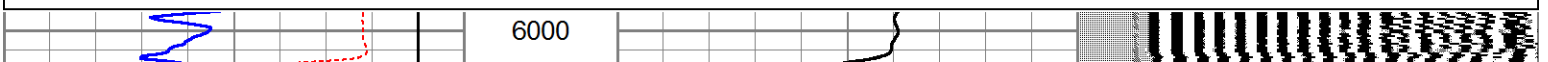
Serial Number:	275		
Tool Model:	Probe		
Performed:	Mon Oct 26 10:52:23 2015		
Depth:	1691.64	ft	
Casing Diameter:	4.5	in	
	3' Spacing	5' Spacing	
Signal Zero:	0.25	0.25	mV
Calibrated Amplitude:	81.1961	81.1961	mV
Reading at Signal Zero:	0.0269287	0.0272461	V
Reading in Free Pipe:	1.0823	0.976367	V
Gain:	76.6992	85.2853	
Offset:	-1.81541	-2.07369	

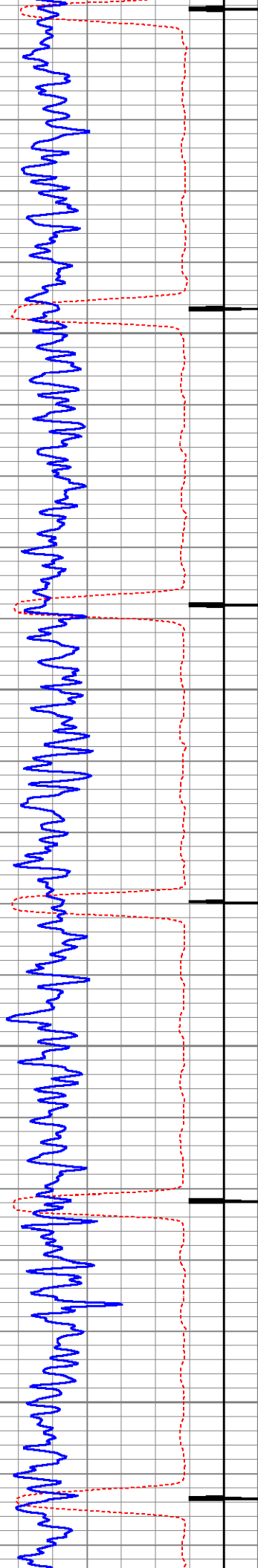


MAIN PASS AT 0 PSI

Database File:	nelson_1.db
Dataset Pathname:	pass33
Presentation Format:	cbl_dr
Dataset Creation:	Wed Oct 28 07:37:45 2015 by Log Std Casedhole 09061
Charted by:	Depth in Feet scaled 1:240

325	Travel Time (usec)	225	0	Amplified Amplitude (mV)	10	200	Variable Density	1200
9	Collar Locator	-1	0	Amplitude (mV)	100			
0	Gamma Ray (GAPI)	250					Free Pipe Gate	



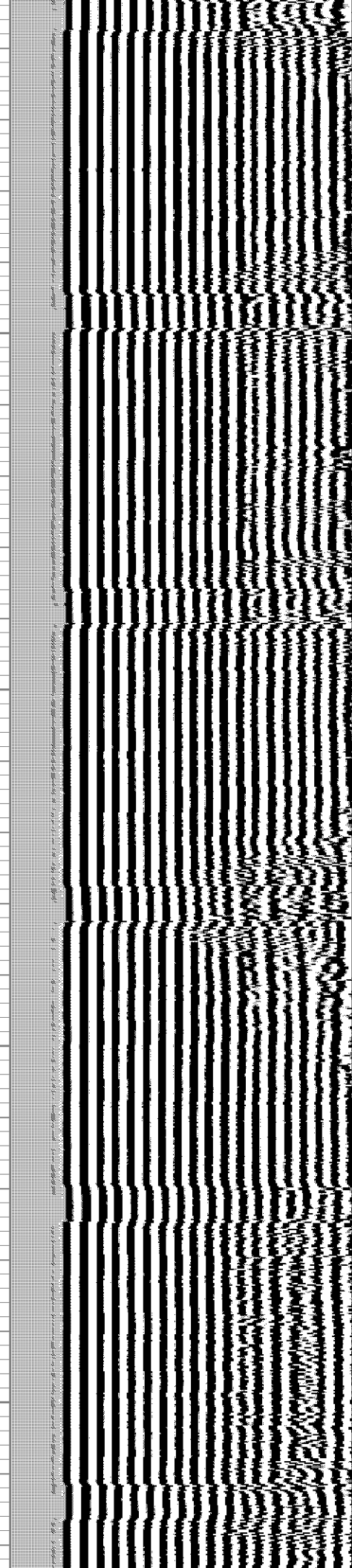
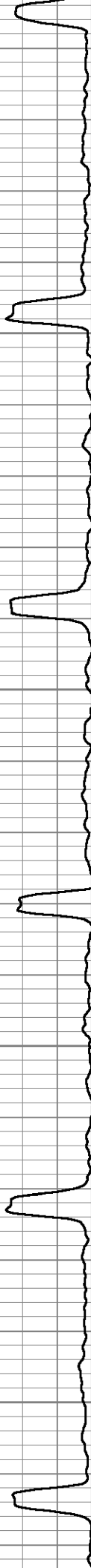


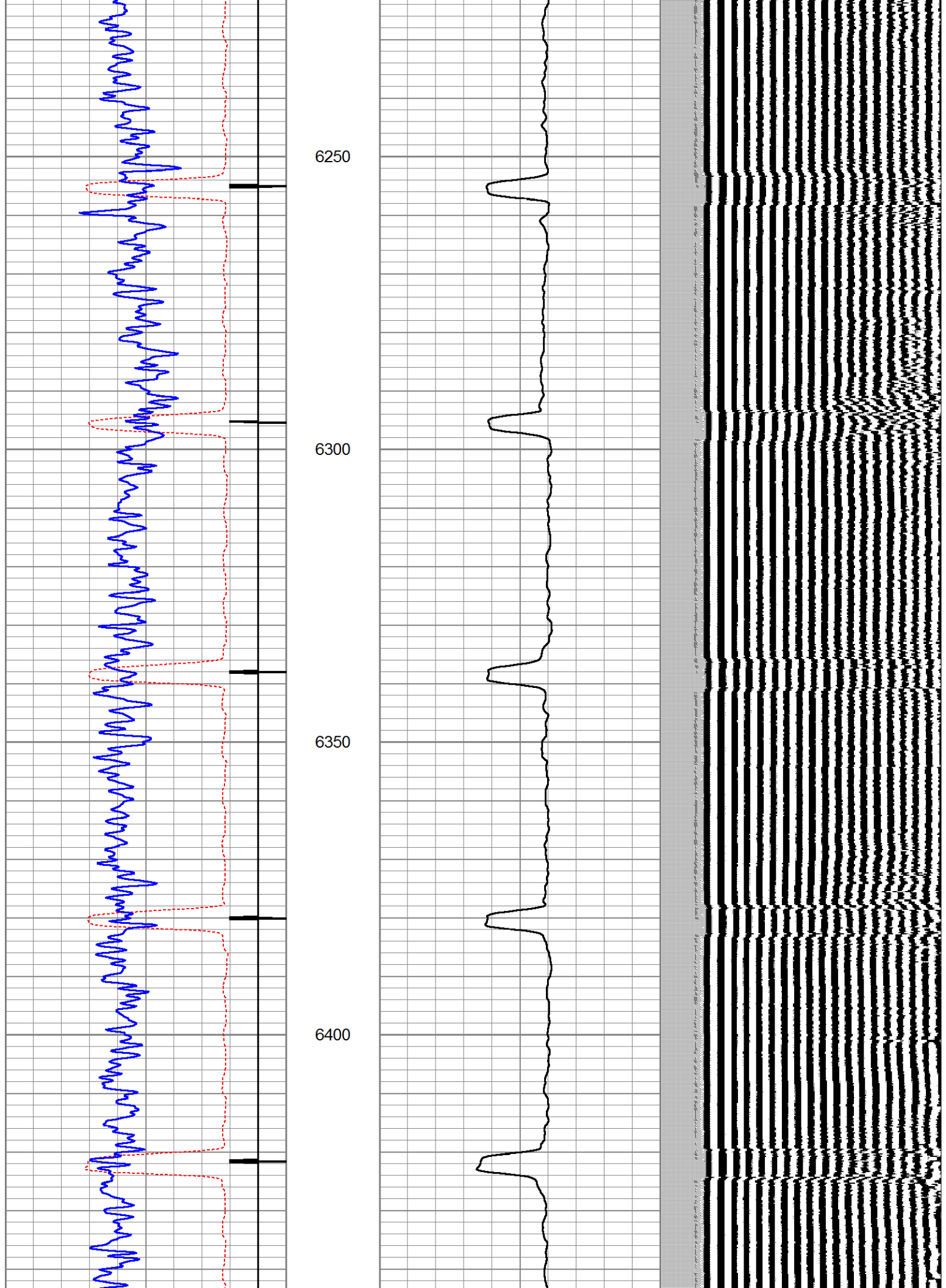
6050

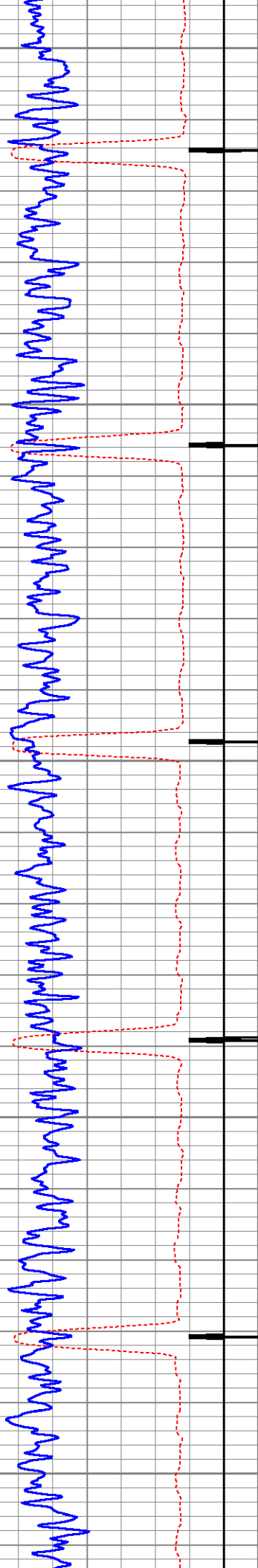
6100

6150

6200







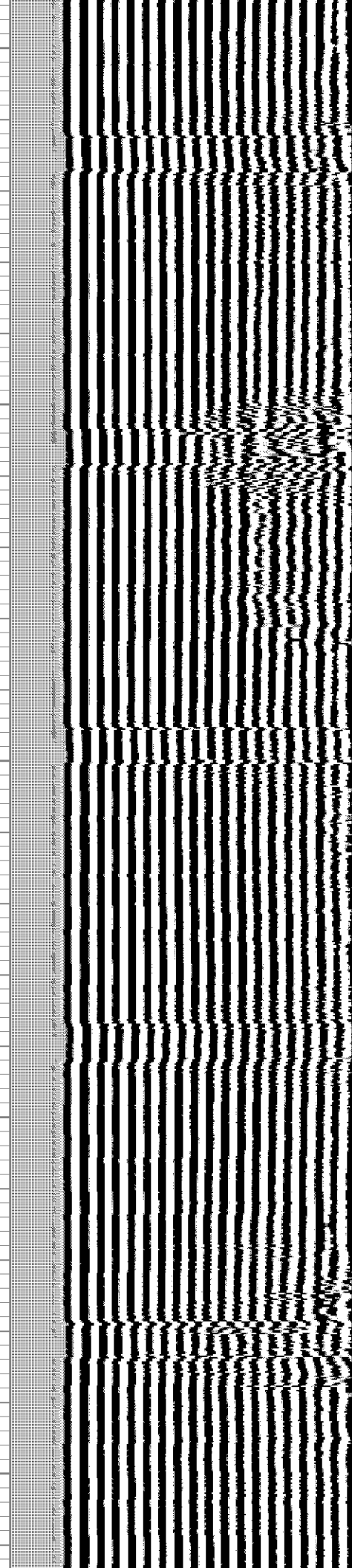
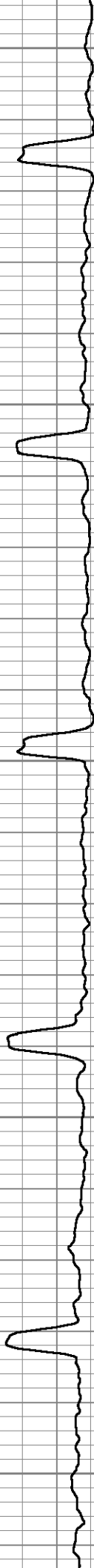
6450

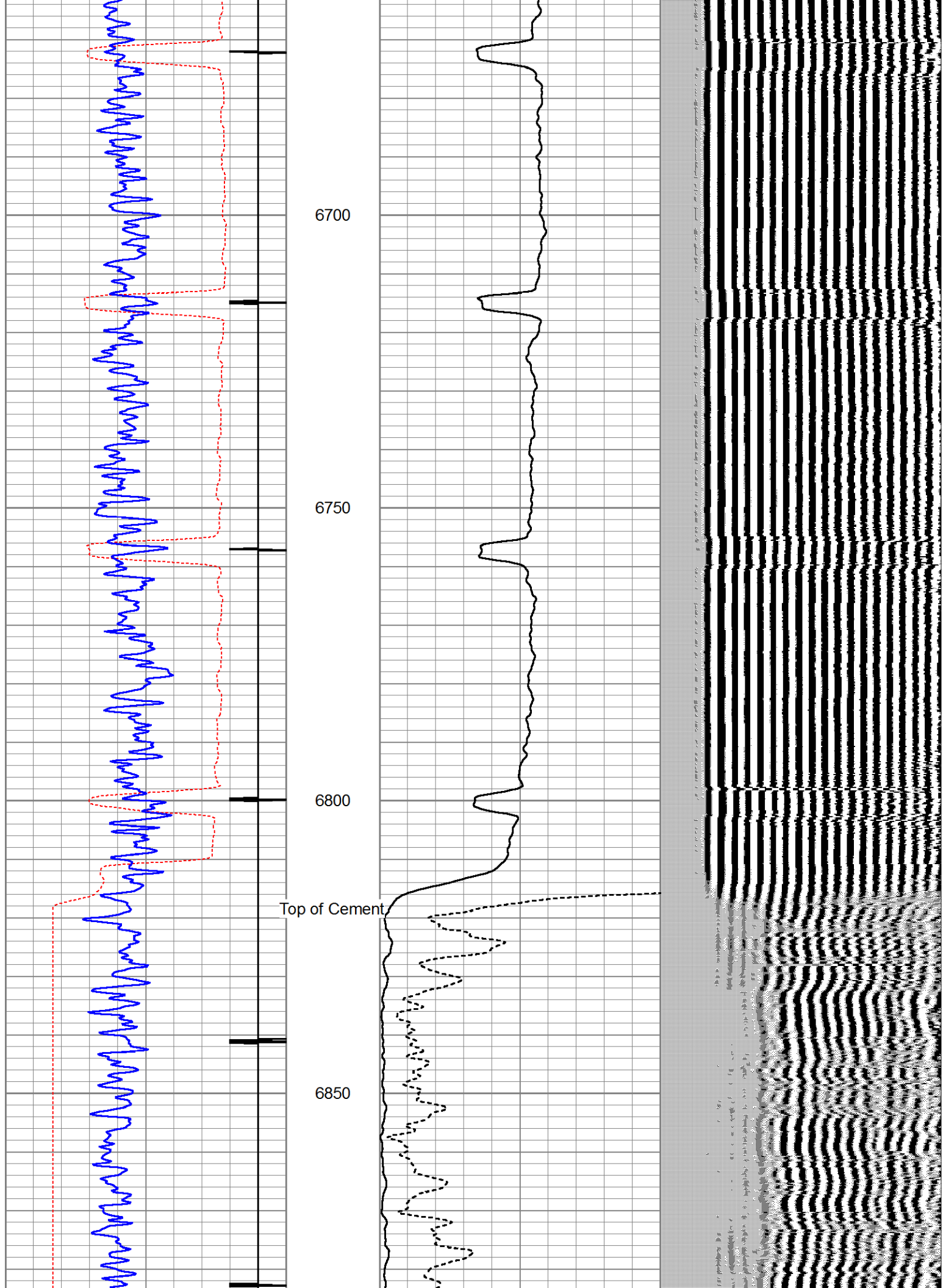
6500

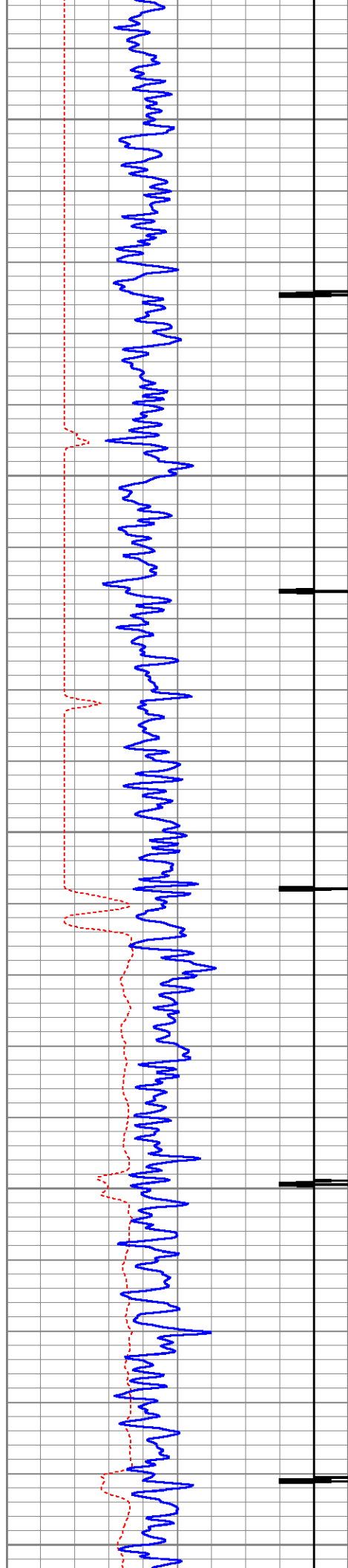
6550

6600

6650







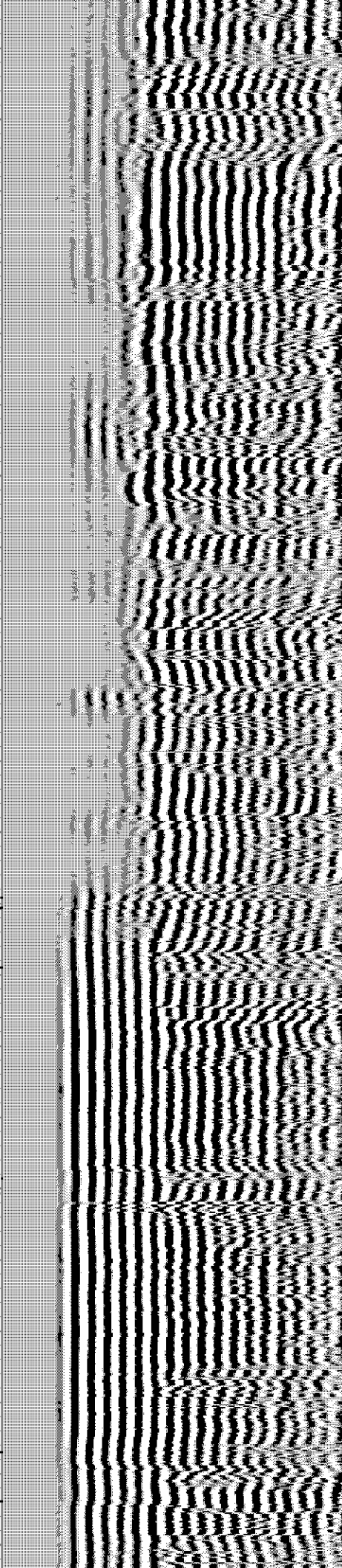
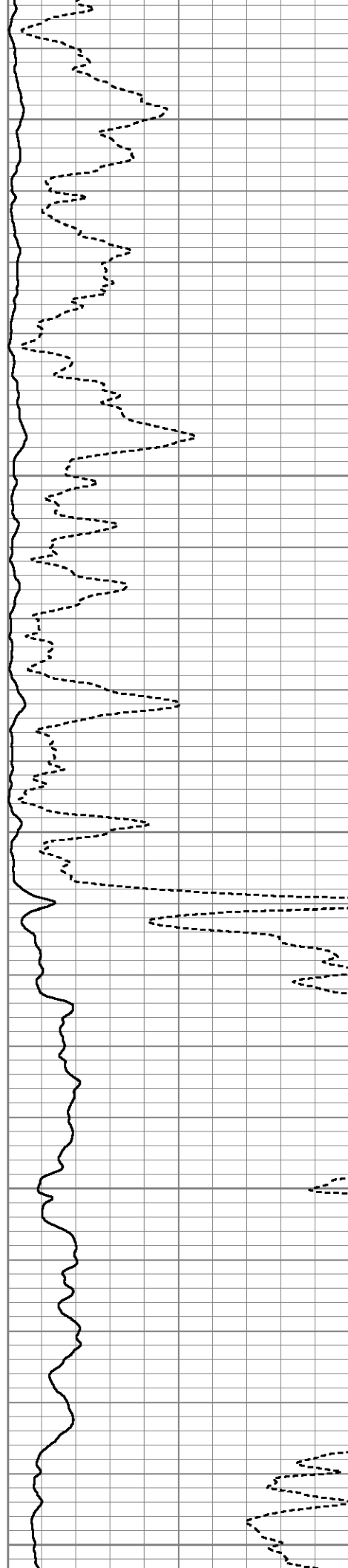
6900

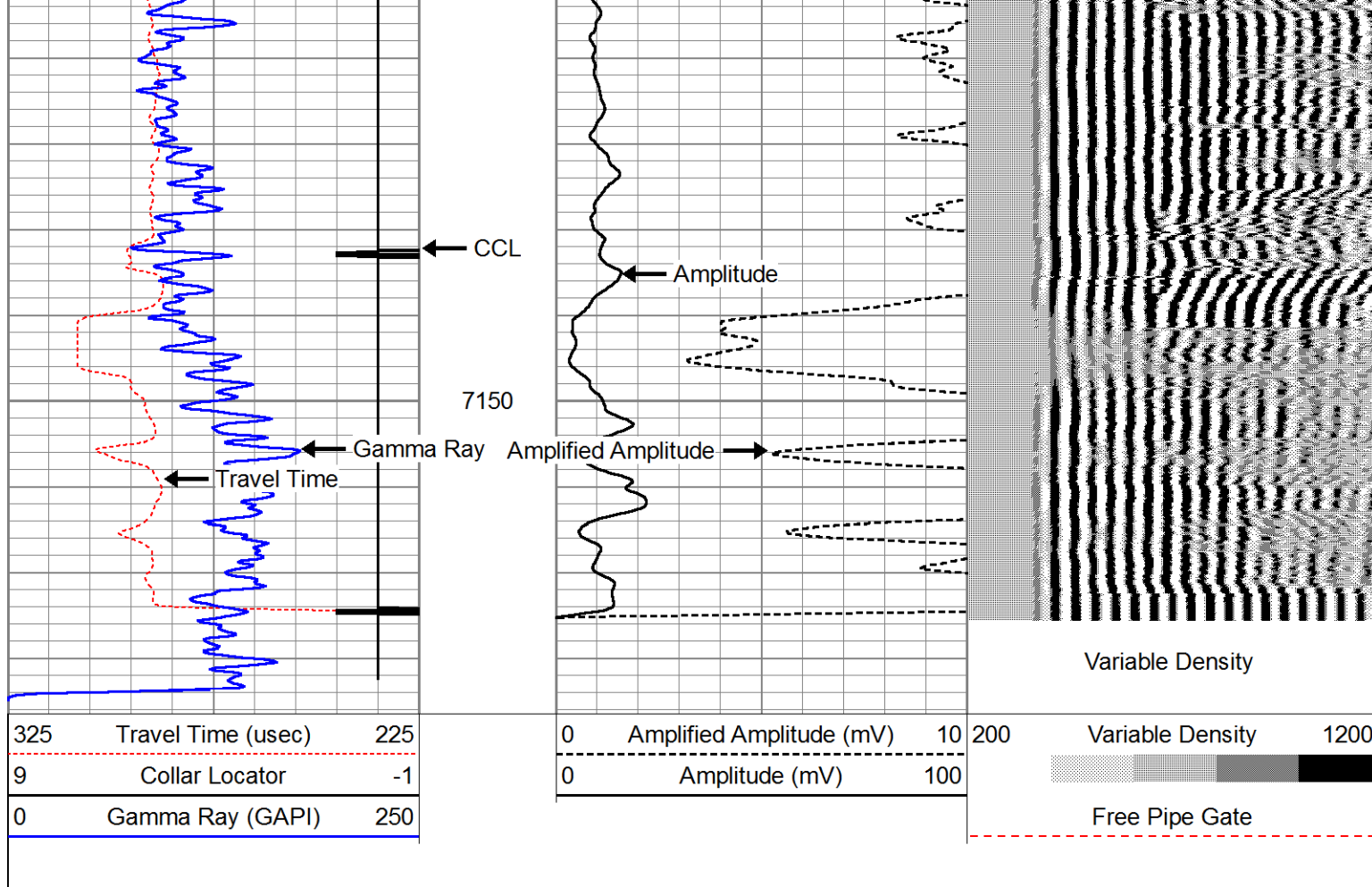
6950

7000

7050

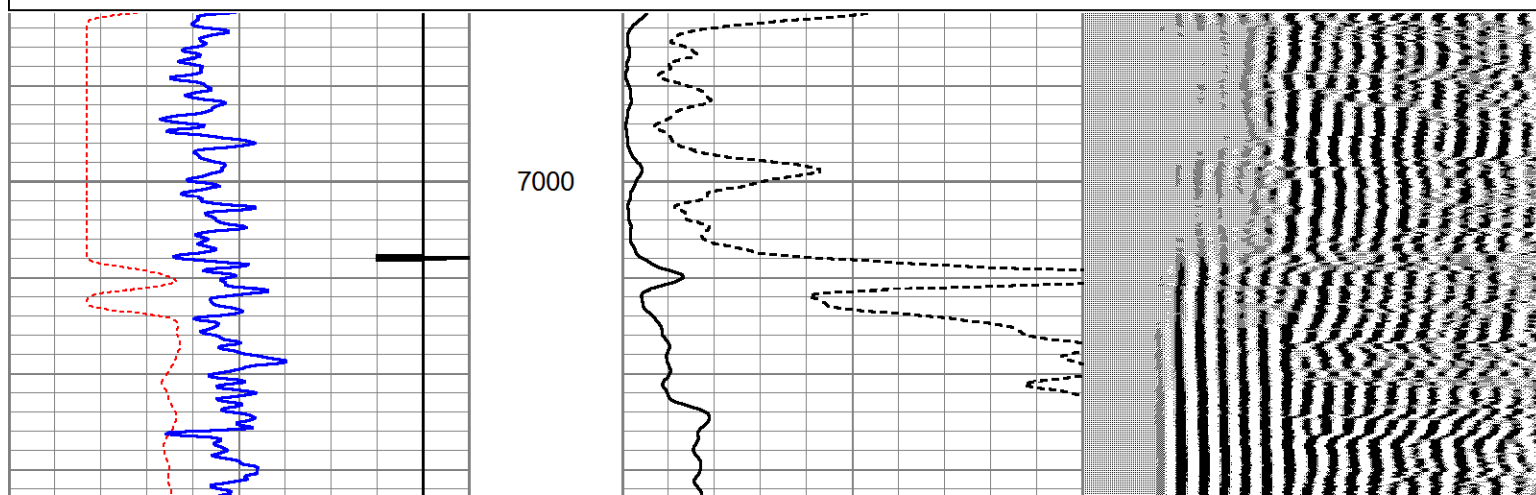
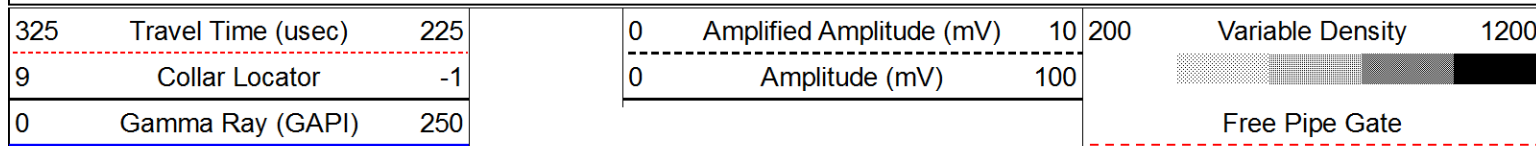
7100

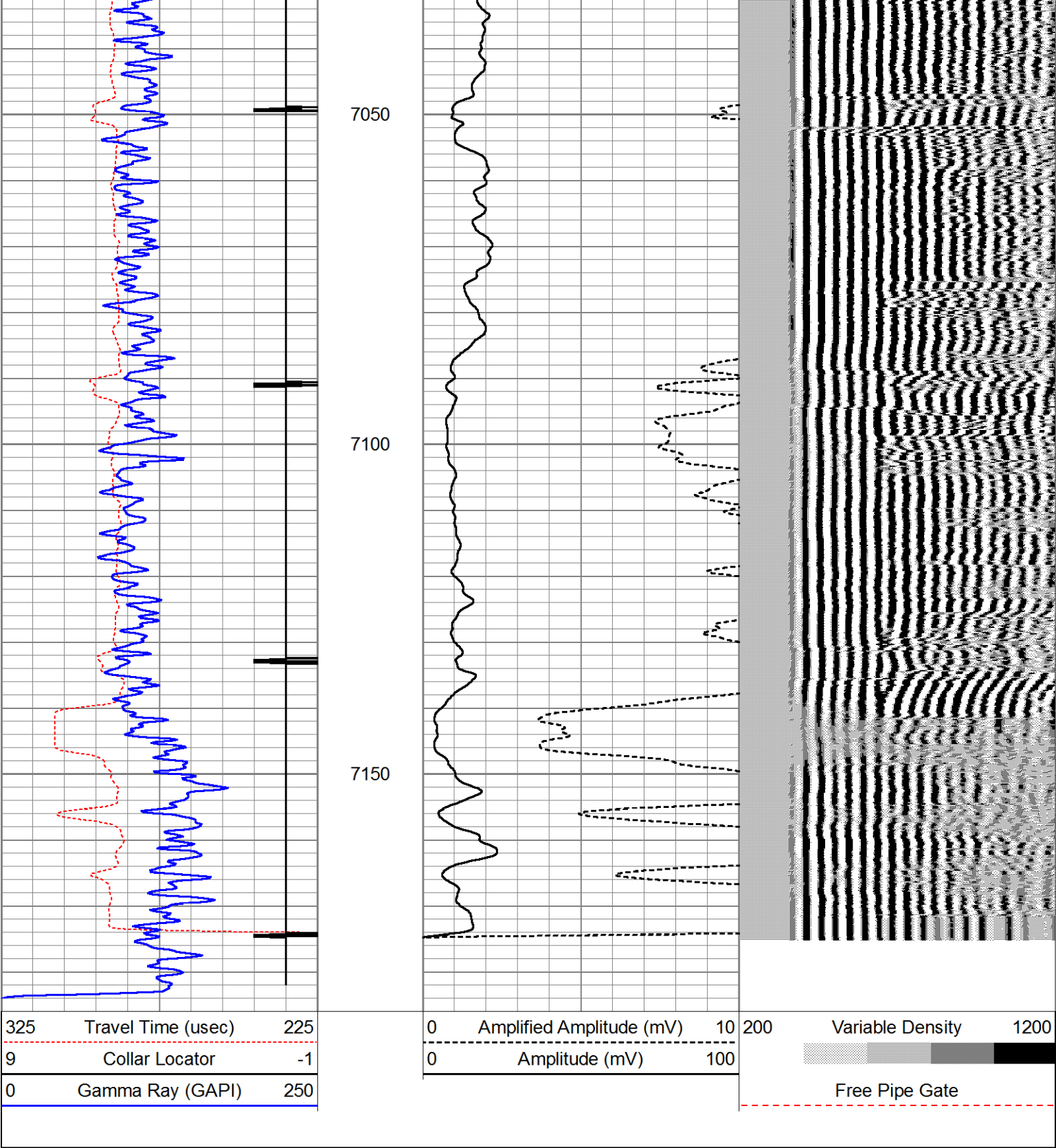




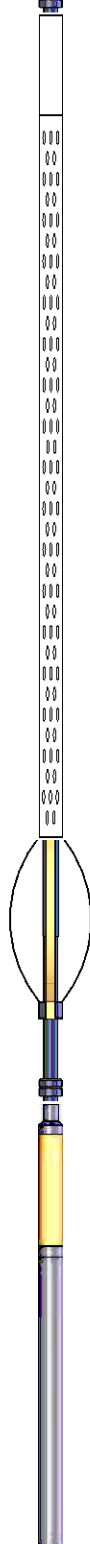
REPEAT PASS AT 0 PSI

Database File: nelson_1.db
 Dataset Pathname: pass31
 Presentation Format: cbl_dr
 Dataset Creation: Wed Oct 28 07:32:24 2015 by Log Std Casedhole 09061
 Charted by: Depth in Feet scaled 1:240





Sensor	Offset (ft)	Schematic	Description	Len (ft)	OD (in)	Wt (lb)
			1.4375CHD Titan Cable Head 1 7/16	1.00	1.44	10.00
			PTS275	2.83	2.75	

WVF3	11.79			CBL-Probe (275) Probe 2.75" Dual Receiver Bond	8.92	2.75	60.00	
WVF5	10.79							
				PTS275	2.83	2.75		
CCL	3.92							
GR	2.42			GR-GCT_C3 (FW1304-53) Probe Digital Gamma CCL Corrosion	4.77	2.75	50.00	
			Dataset: nelson_1.db: field/well/run1/pass33 Total Length: 20.35 ft Total Weight: 120.00 lb O.D. 2.75 in					



Company	EnCana Oil and Gas
Well	NELSON #1
Field	Wattenberg
County	Weld
State	CO