

Stormwater and Construction Inspection

Inspection 2 of 2

12/07/2015

Operator: Wiepking-Fullerton

Location ID: 443145

API #: 05-073-06697

Lincoln County, CO

Section 2 T6S R54W

Aaron Trujillo
Reclamation Specialist
COGCC

Contents

- Location Overview
 - Figures 1 - 10
- Upstream (west fork) portion of drainage. West of location.
 - Figures 11 - 15.e
- Upstream (south fork) portion of drainage. South of location.
 - Figures 16 - 19.e
- Downstream portion of drainage. East of location.
 - Figures 20 - 23.c
- Drainage Overview
 - Figures 24 - 32

Location Overview

- Photos of location perimeter and access road

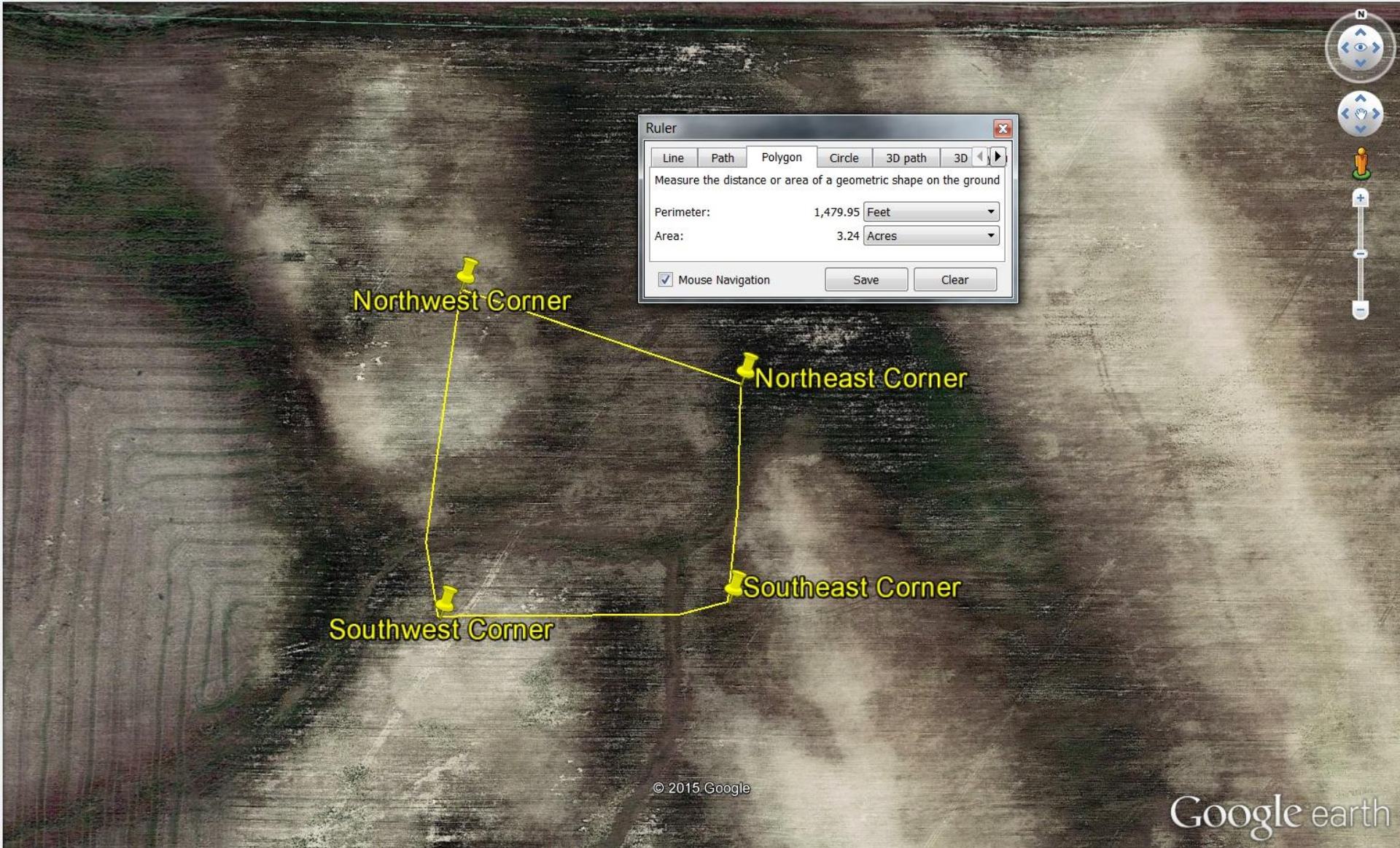


Figure 1: Aerial image of location. Image shows perimeter with points confirmed by GPS. Location disturbance is approximately 3.24 acres in size.



Figure 2: Photo of sign at location. Photo taken from northern end of location on previous inspection (12/02/2015).



Figure 3: Photo taken from County Rd. 0 facing south towards location. Photo shows inadequate stormwater BMPs for site's access road.



Figure 4: Photo taken from Northwest portion of location, facing south. Photo shows topsoil berm (left of photo), surface roughening (sediment control BMP) and construction in process.



Figure 5: Photo taken from Northwest portion of location, facing east. Photo shows topsoil berm (right of photo), surface roughening (sediment control BMP) and construction in process.



Figure 6: Photo taken from Southwest portion of location, facing east. Photo shows surface roughening (sediment control BMP), and vehicle park on said sediment control BMP.



Figure 7: Photo taken from Southeast portion of location, facing west. Photo shows surface roughening (sediment control BMP), and vehicle park on said sediment control BMP. Photo also shows where the south-fork drainage meets location (shown with red arrow, water flow/direction shown with blue arrow)



Figure 8: Photo taken from the northeast portion of location, facing south. Photo shows surface roughening (sediment control BMP).



Figure 9: Photo taken from Northeast portion of location, facing west. Photo shows surface roughening (sediment control BMP). Photo shows equipment (appears to be a large pipe), placed off of location.



Figure 10: Photo taken from North end of location, facing north. Photo of access road.

Upstream (west fork) portion
of drainage. West of location.

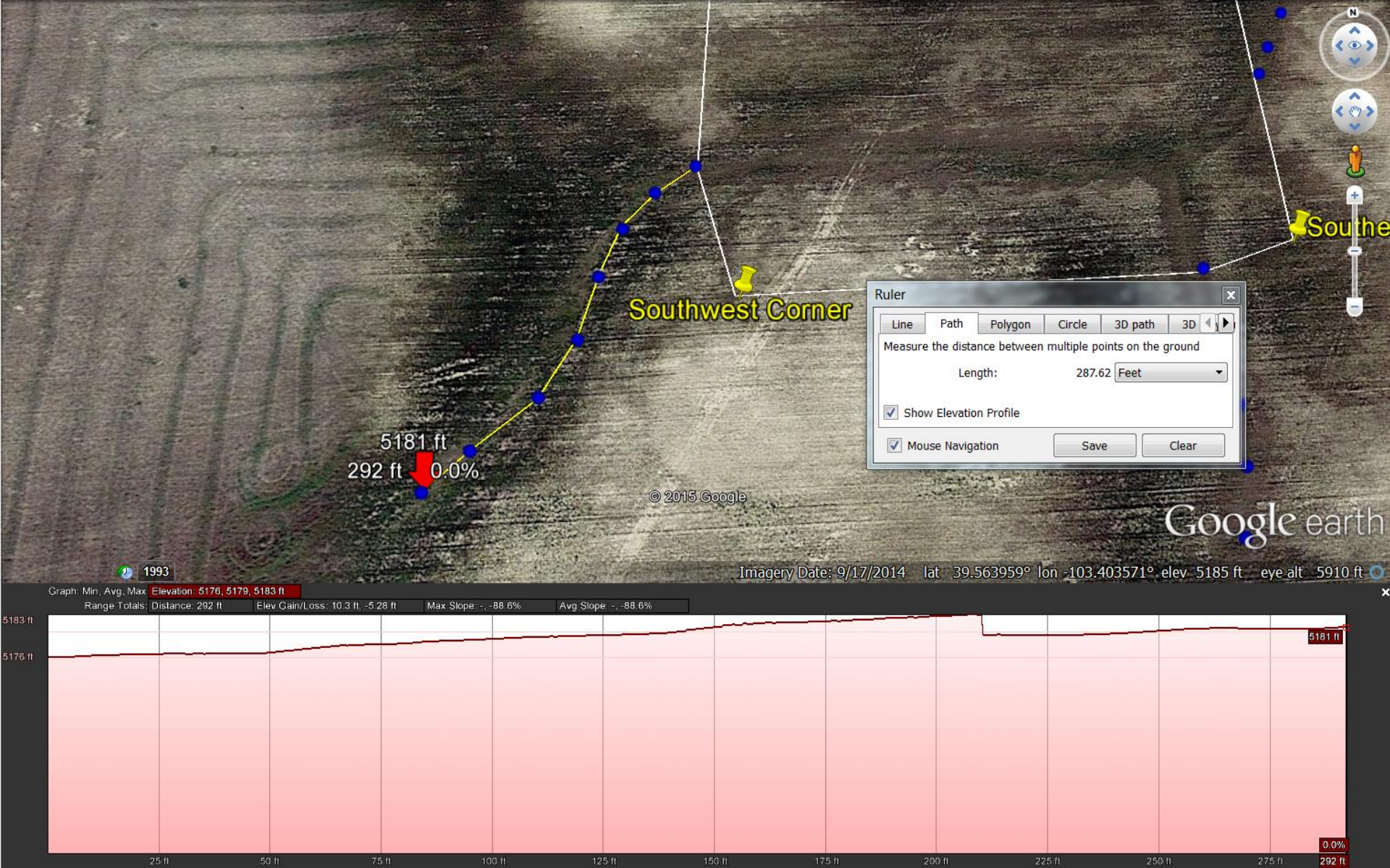


Figure 11: Aerial image of west fork portion of drainage and elevation change. Blue dots indicate GPS points taken on ground. Elevation changes approximately 5 feet over a distance of approximately 288 feet.



Figure 12: Photo taken from northwest end of location, facing south. Photo of topsoil berm, and where the west fork portion of drainage meets the location, indicated by red arrow. Water flow/direction indicated by blue arrow.



Figure 13: Photo taken from topsoil berm on west end of location, facing south. Photo shows where the west fork portion of drainage meets the location, indicated by red arrow. Water flow/direction indicated by blue arrow.



Figure 14: Photo taken west of location, from drainage, facing northeast. Photo shows where the west fork portion of drainage meets the location, indicated by red arrow. Water flow/direction indicated by blue arrow.

The following photos are a panoramic compilation documenting the upstream, west-fork portion of the drainage. Photos taken from the west of the location.

Photos begin facing east towards location, pivoting clockwise, south to southwest.



Figure 15.a



Figure 15.b



Figure 15.c



Figure 15.d



Figure 15.e

Upstream (south fork) portion
of drainage. South of location.

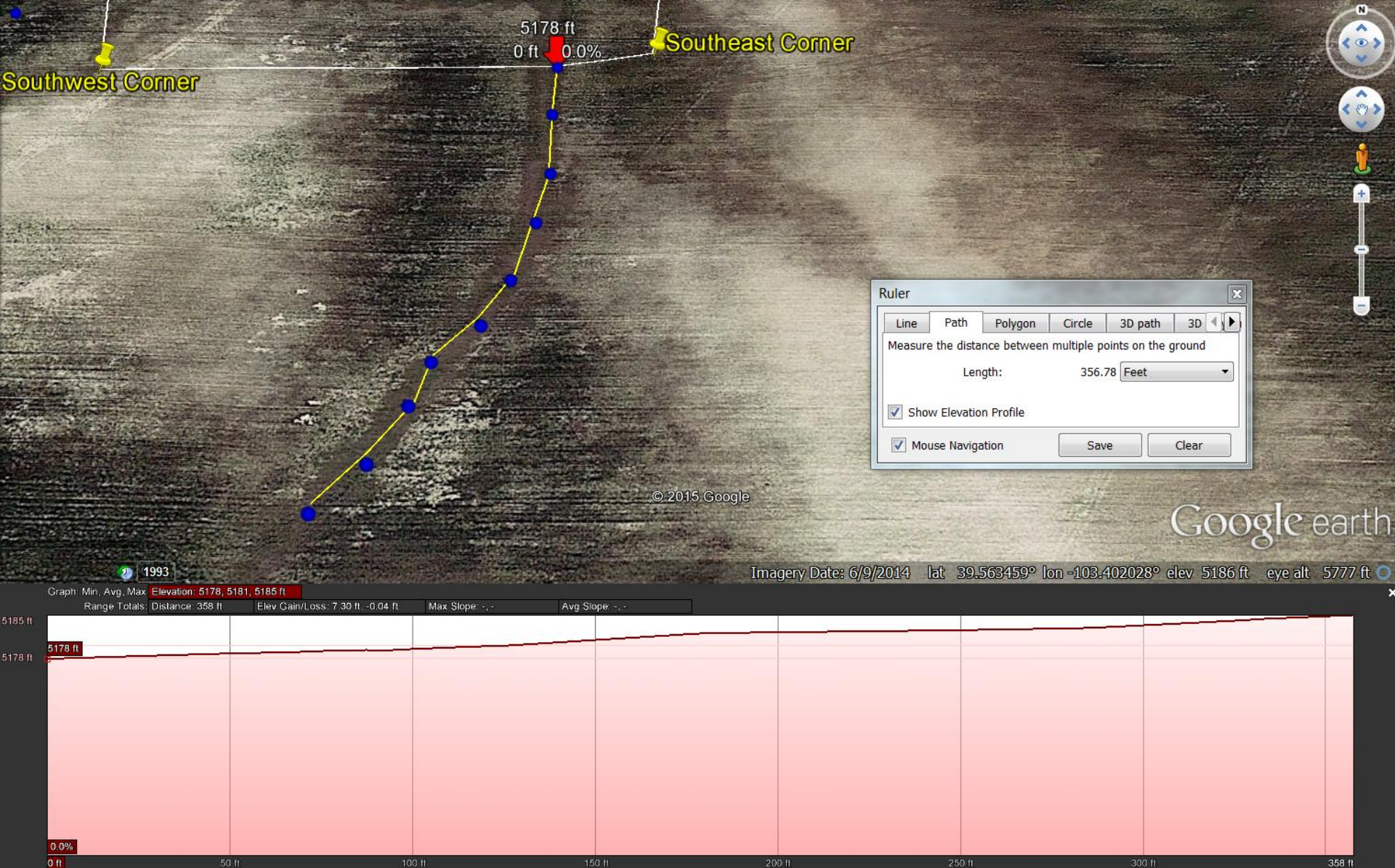


Figure 16: Aerial image of south fork portion of drainage and elevation change. Blue dots indicate GPS points taken on ground. Elevation changes approximately 7 feet over a distance of approximately 357 feet.

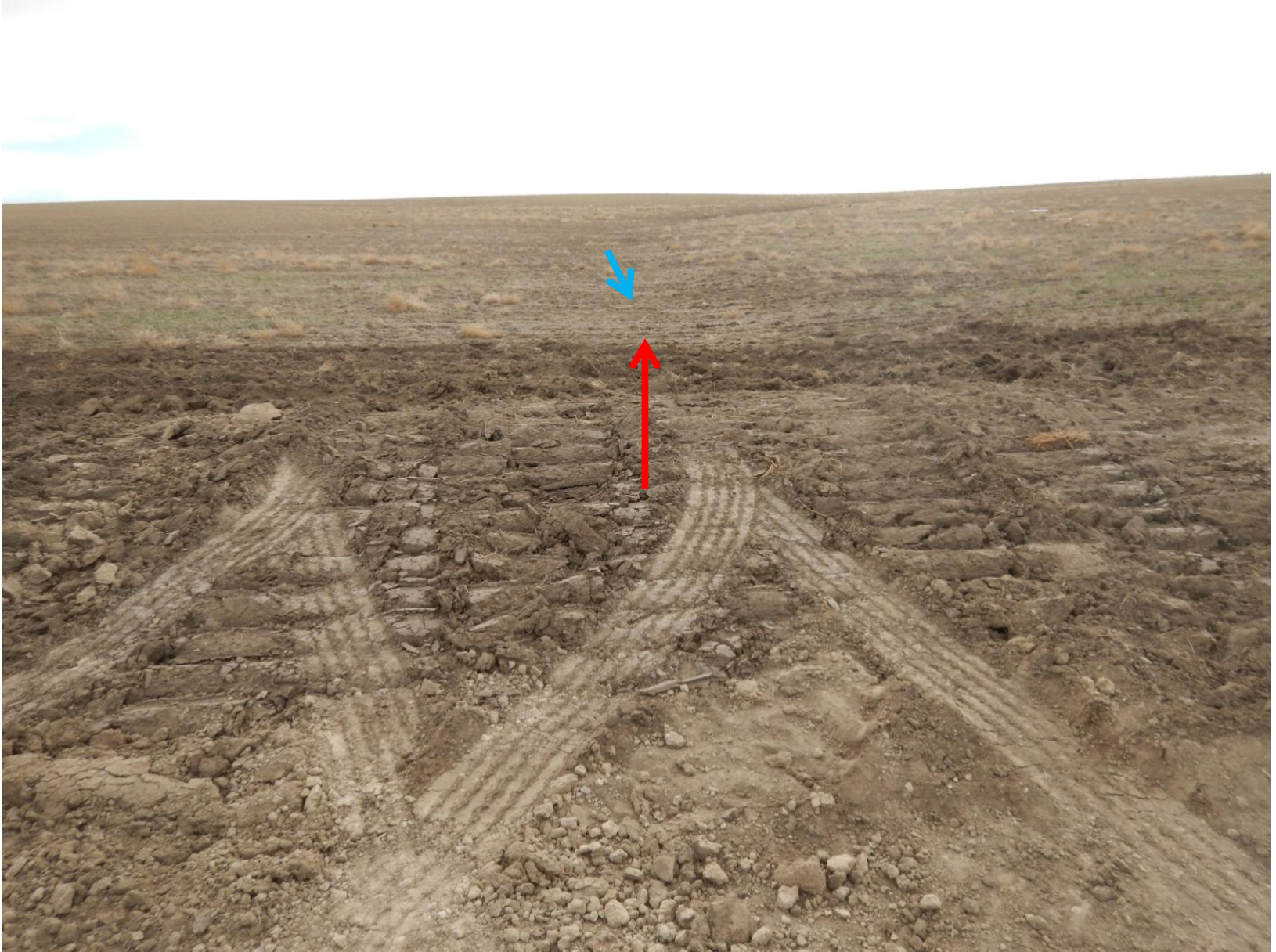


Figure 17: Photo taken from south end of location, facing south. Photo shows where south-fork drainage meets location, indicated by the red arrow. Water flow/direction indicated by blue arrow.



Figure 18: Photo taken from south of location, facing northeast. Photo shows where south-fork drainage meets location, indicated by the red arrow. Water flow/direction indicated by blue arrow.

The following photos are a panoramic compilation documenting the upstream, south-fork portion of the drainage. Photos taken from the south of the location.

Photos begin facing northeast towards the location, pivoting clockwise east to south.



Figure 19.a



Figure 19.b



Figure 19.c



Figure 19.d



Figure 19.e

Downstream portion of
drainage. East of location.

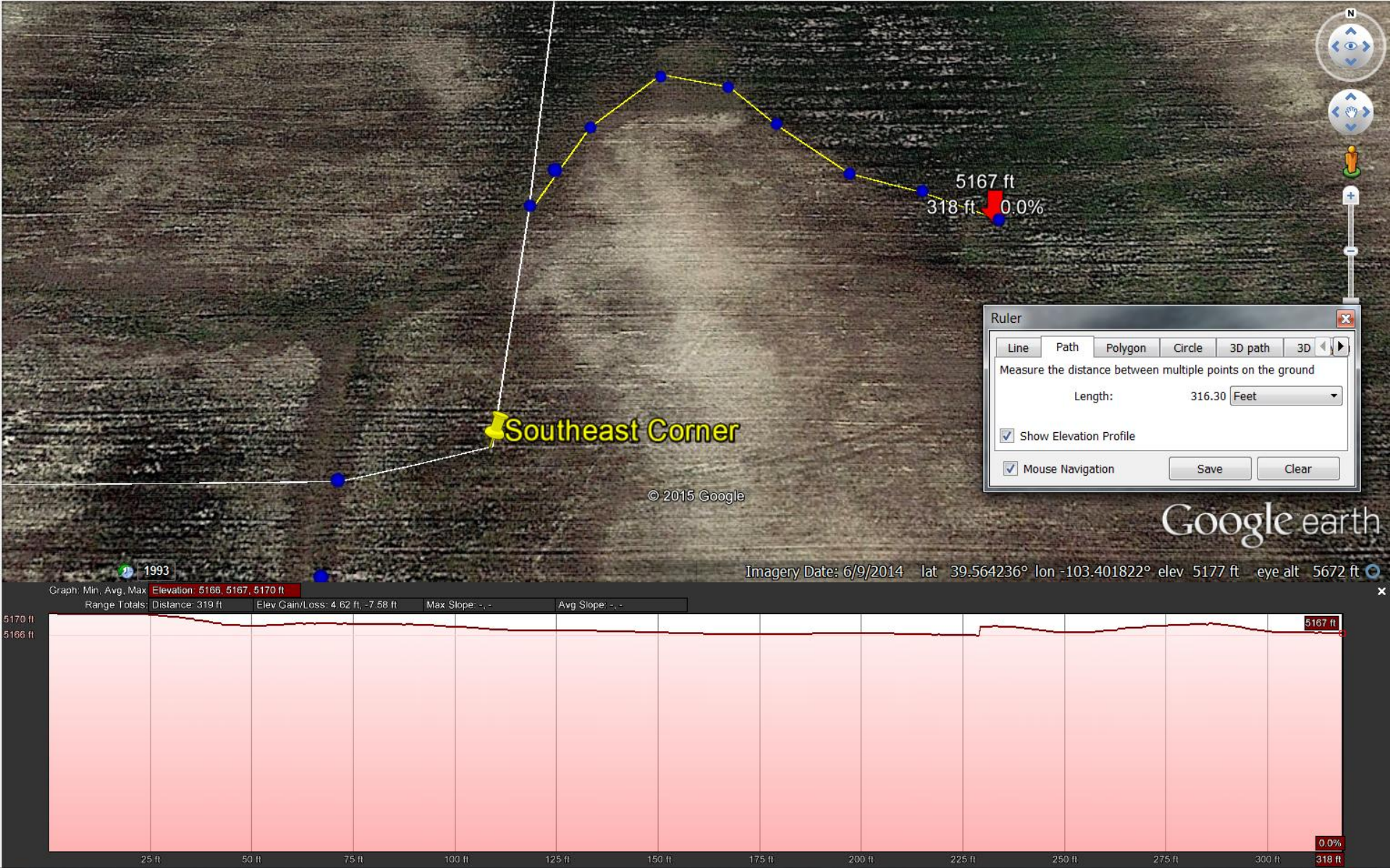


Figure 20: Aerial image of the downstream portion of the drainage and elevation change. Blue dots indicate GPS points taken on ground. Elevation changes approximately 4 feet over a distance of approximately 316 feet.



Figure 21: Photo taken from east end of location facing north. Photo shows where the location meets the downstream drainage, indicated by the red arrow. Water flow/direction indicated by blue arrow.

The following photos are a panoramic compilation documenting the downstream portion of the drainage. Photos taken from east of location.

Photos begin facing west towards location, pivoting clockwise, north to southeast. Water flow/direction indicated by blue arrow.



Figure 22.a



Figure 22.b



Figure 22.c



Figure 22.d



Figure 22.e

The following photos are a panoramic compilation documenting the downstream portion of the drainage. Photos taken from east end location.

Photos begin facing south, pivoting counter-clockwise, south to east. Water flow/direction indicated by blue arrow.



Figure 23.a



Figure 23.b



Figure 23.c

Drainage Overview

- Topomap
- Estimated stream flow through, and downstream of location.
- Drainage points from County Rd. 0
- Wiepking-Fullerton Documents
 - Location drawing
 - Hydrology drawing

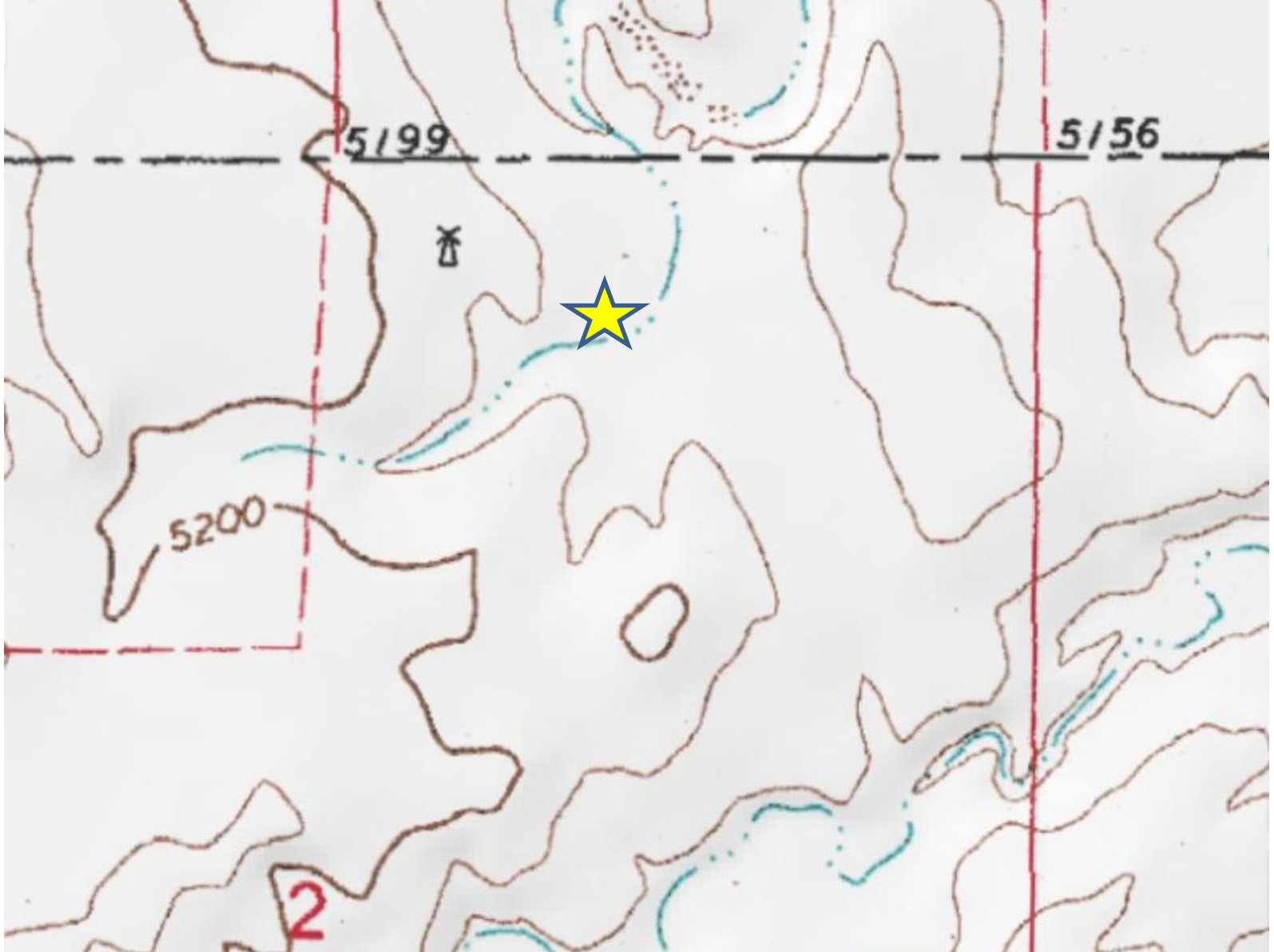


Figure 24: Topommap of drainage. Stream system north of location drains into north-fork of the Arikaree river. Star represent location.

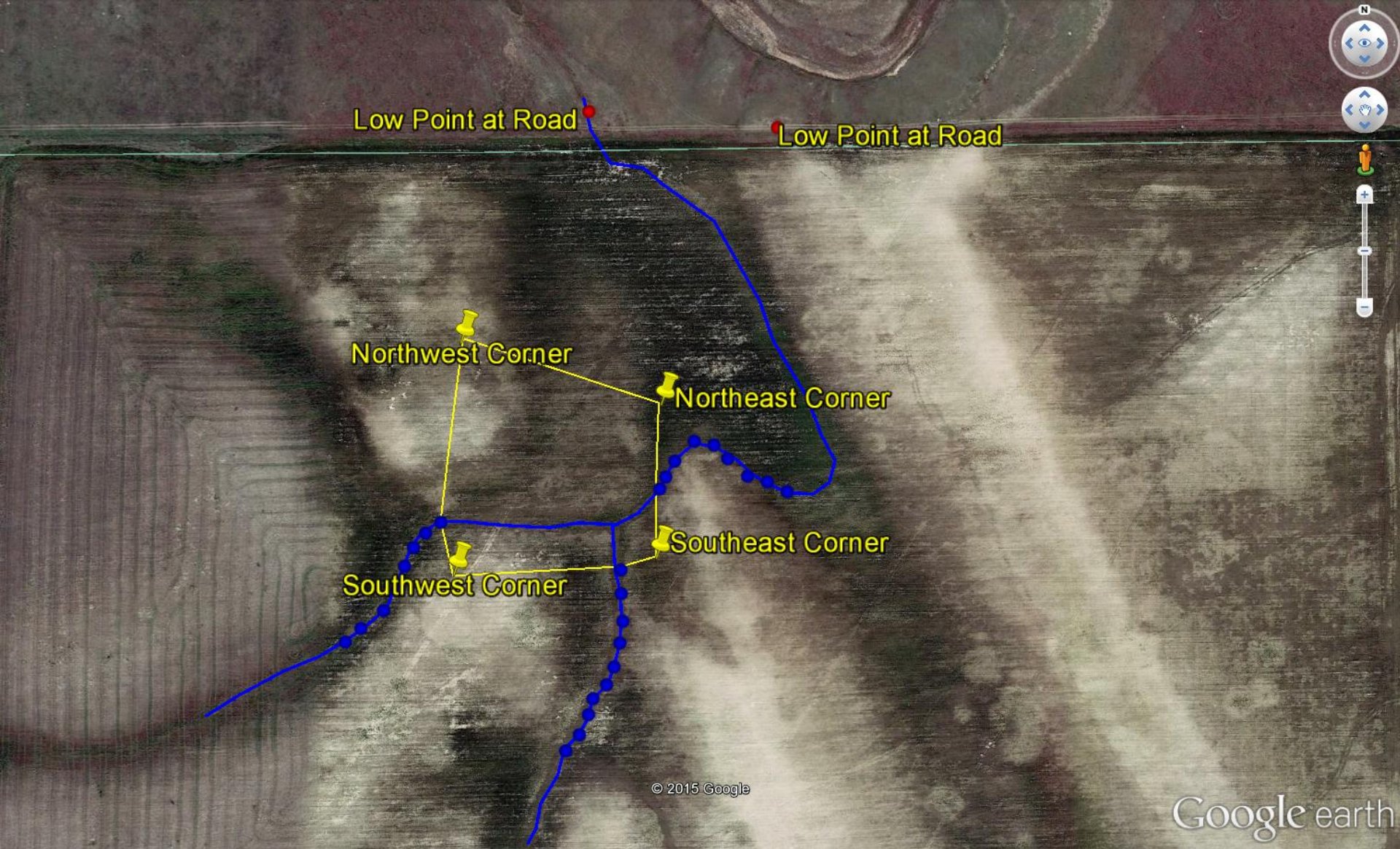


Figure 25: Aerial image of location and drainage. Yellow lines represent perimeter of Wiepking-Fullerton's location. Blue dots indicate GPS points taken on ground. Blue line represents estimated stream flow through drainage and location based on observations on the ground, aerial images and maps. Red dots represent lowest points at road where culverts are located.



Figure 26: Photo taken from western “low point at road” (figure 23) of County Rd. 0., facing south. Photo of culvert and focal point for drainage of local basin to creek.



Figure 27: Photo taken from western “low point at road” (figure 23) of County Rd. 0., facing north. Photo shows primary drainage downstream to creek from Wiepking-Fullerton location.



Figure 28: Photo taken from eastern “low point at road” (figure 23) of County Rd. 0., facing southwest. Eastern low point appears to be the secondary drainage point for high flow events.



Figure 29: Photo taken from eastern “low point at road” (figure 23) of County Rd. 0., facing north. Photo shows creek drainage north of Wiepking-Fullerton location.



Figure 30: Photo taken east of the “low point of road” (figure 23). Photo focal point for drainage of local basin with Wiepking-Fullerton location to creek.

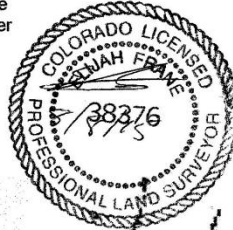
Job # 14226 Easy Come #2

Inv # 4089

High Prairie Surveying of Kiowa, Colorado, in accordance with a request from **Wiepking Fullerton Energy LLC** has determined the location of **Easy Come #2** to be **620 feet FNL**, and **1677 feet FEL**, (90° off Section lines) of **SECTION 2**, Township **6s**, Range **54w** of the 6th Principal Meridian, **Lincoln County**, Colorado.

Date: Staked on 07/16/15 drawn on 07/28/15.

Re: Staked by Elijah Frane
Drawn: Drawn by Dustin Cotter



Location Drawing

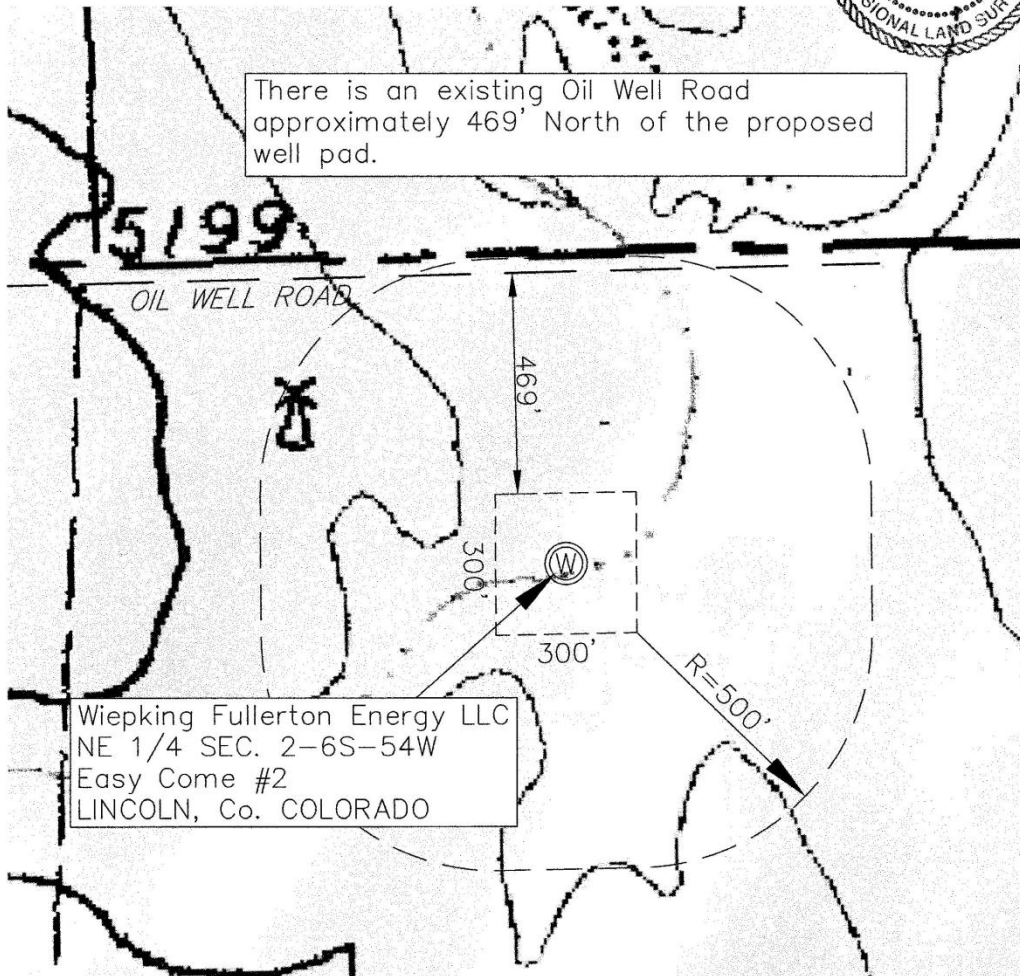


Figure 31: Image of Wiepking-Fullerton's Location drawing. Document #400884614

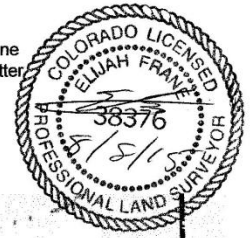
Job # 14226 Easy Come #2

Inv # 4089

High Prairie Surveying of Kiowa, Colorado, in accordance with a request from **Wiepking Fullerton Energy LLC** has determined the location of **Easy Come #2** to be **620 feet FNL**, and **1677 feet FEL**, (90° off Section lines) of **SECTION 2**, Township **6s**, Range **54w** of the 6th Principal Meridian, **Lincoln County**, Colorado.

Date: Staked on 07/16/15 drawn on 07/28/15.

Re: Staked by Elijah Frane
Drawn: Drawn by Dustin Cotter



1000' Hydrology Map

Delorme Map indicates a surface water area approximately 75' South of the proposed well head; However the Division of Water Resources and COGCC maps do not identify this area. No apparent surface water was observed at the time of staking.

Wiepking Fullerton Energy LLC
NE 1/4 SEC. 2-6S-54W
Easy Come #2
LINCOLN, Co. COLORADO

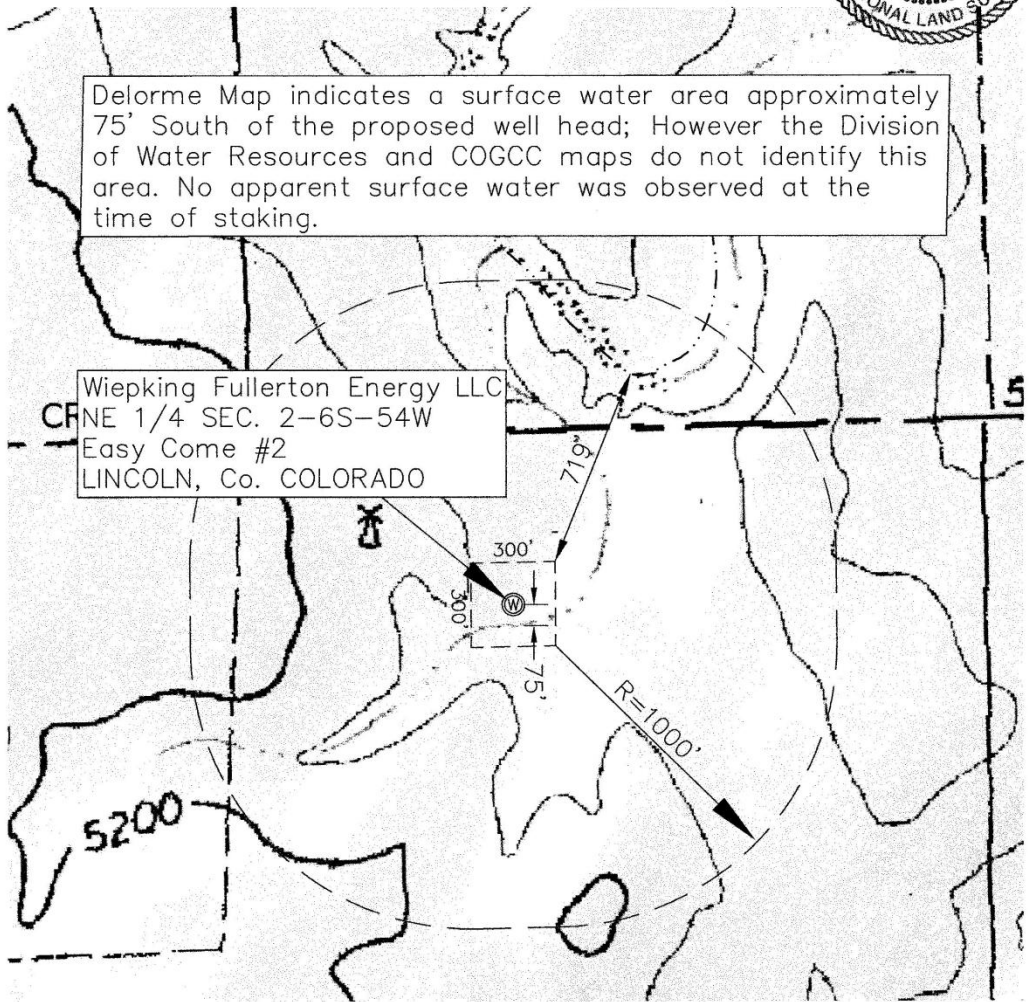


Figure 32: Image of Wiepking-Fullerton's Hydrology map. Document # 400884610