

1801 Broadway  
Suite 500  
Denver, Colorado 80202



Allison Linz  
Regulatory Technician  
Tel: 303.398.0355  
E-mail:  
regulatorypermitting@gwogco.com

12/3/2015

Colorado Oil and Gas Conservation Commission  
1120 Lincoln Street, Suite 801  
Denver, Colorado 80203

RE: **Proposed Wellbore Spacing Unit**  
Marcus LD 11-379HC  
Codell New Drill

SESE Section 34  
Township 1N, Range 67W, 6th P.M.  
Weld County, Colorado

Dear Director:

Great Western Operating Company, LLC is planning to drill the above captioned well in accordance with the provisions of COGCC Rule 318A.e.

Great Western proposed wellbore spacing unit consists of:

- W2 Section 2, W2 Section 11: 640 Acres

The 30 day notification time period has passed and we have not received any objections to such well locations or proposed spacing unit, therefore Great Western hereby requests the Director to approve the above mentioned well. Great Western Operating Company, LLC respectfully requests that the COGCC review the enclosed map illustrating the proposed wellbore spacing unit.

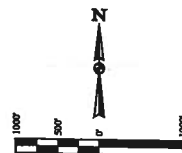
Respectfully,

*Allison Linz*

Allison Linz  
Regulatory Technician  
Great Western Operating Company, LLC

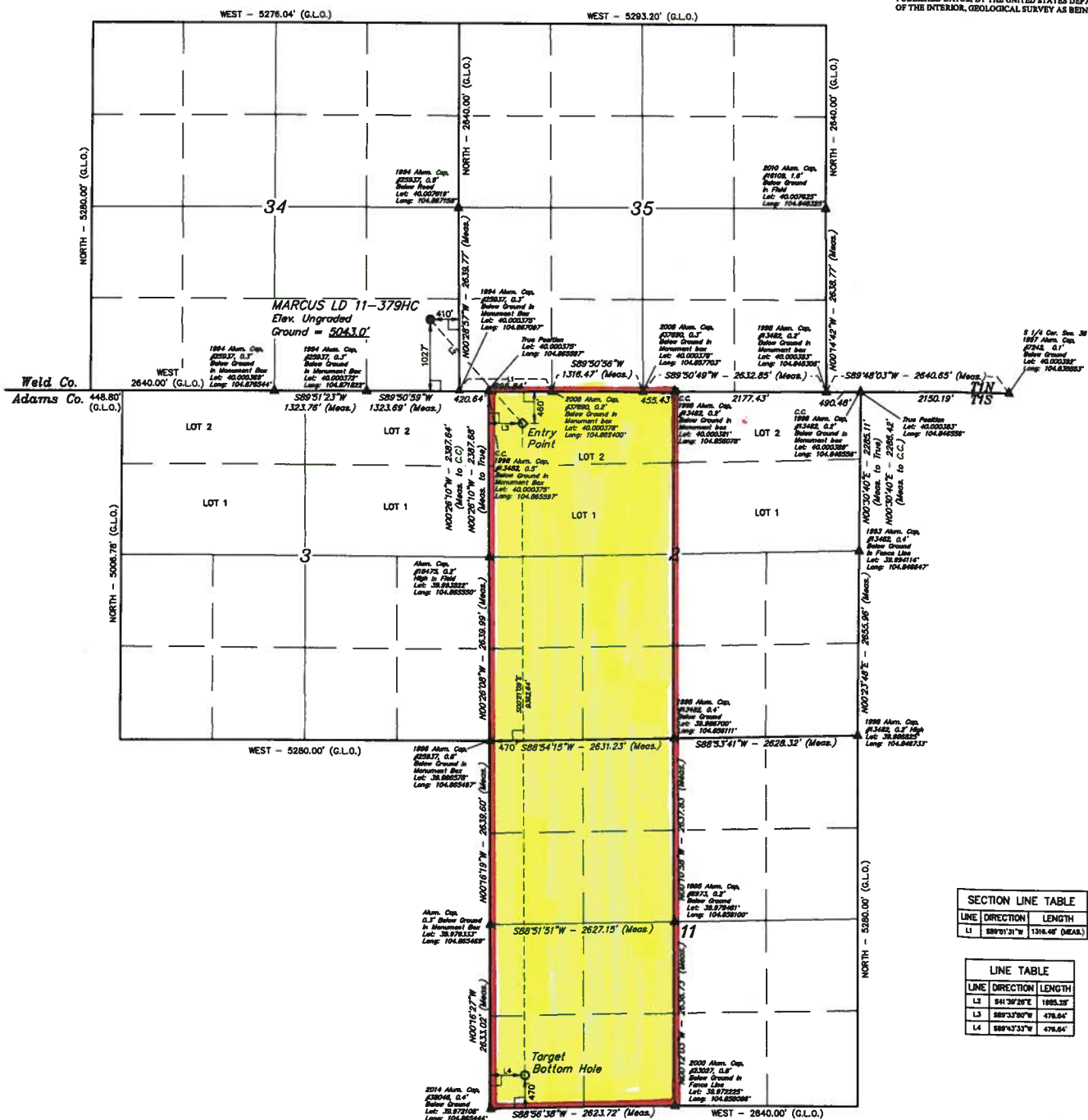
LEGEND:  
 [Symbol] = 90° SYMBOL  
 [Symbol] = PROPOSED WELLHEAD  
 [Symbol] = ENTRY POINT  
 [Symbol] = TARGET BOTTOM HOLE  
 [Symbol] = SECTION CORNERS LOCATED

T1N, R67W, 6th P.M.



BASIS OF BEARINGS  
 BASIS OF ELEVATION

BENCHMARK IS 515024 LOCATED IN THE SW 1/4 SE 1/4 OF SECTION 18, T1N, R67W, 6th P.M., TAKEN FROM 1988 PUBLISHED DATUM BY THE UNITED STATES DEPARTMENT OF THE INTERIOR, GEOLOGICAL SURVEY AS BEING 5028 FEET.



SECTION LINE TABLE		
LINE	DIRECTION	LENGTH
L1	S89°01'31\"	1316.46' (MEAS.)

LINE TABLE		
LINE	DIRECTION	LENGTH
L2	S41°30'28\"	1883.38'
L3	S89°33'50\"	478.84'
L4	S89°43'33\"	478.84'

CERTIFICATE OF RECORD  
 THIS IS TO CERTIFY THAT THE ABOVE DESCRIBED SURVEY WAS MADE BY THE UNDERSIGNED AND THAT THE SAME ARE TRUE AND CORRECT TO THE BEST OF HIS KNOWLEDGE AND BELIEF.  
 JARED CHRISTOPHER, J.C.  
 REGISTERED LAND SURVEYOR  
 EXPIRATION DATE: 12-31-15  
 STATE OF UTAH

GREAT WESTERN OIL & GAS COMPANY  
 MARCUS LD 11-379HC  
 SE 1/4 SE 1/4, SECTION 34, T1N, R67W, 6th P.M.  
 WELD COUNTY, COLORADO

UWLS, LLC  
 Corporate Office: 85 South 280 East  
 Vernal, UT 84078 • (435) 789-1817

UWLS, LLC  
 DRAWN BY: J.C.  
 DATE: 12-01-14  
 SCALE: 1\"

WELL LOCATION DATA		
WELL NAME	WELL TYPE	WELL STATUS
MARCUS LD 11-379HC	Oil & Gas	Active
WELL 1	Oil & Gas	Active
WELL 2	Oil & Gas	Active
WELL 3	Oil & Gas	Active
WELL 4	Oil & Gas	Active
WELL 5	Oil & Gas	Active
WELL 6	Oil & Gas	Active
WELL 7	Oil & Gas	Active
WELL 8	Oil & Gas	Active
WELL 9	Oil & Gas	Active
WELL 10	Oil & Gas	Active
WELL 11	Oil & Gas	Active
WELL 12	Oil & Gas	Active
WELL 13	Oil & Gas	Active
WELL 14	Oil & Gas	Active
WELL 15	Oil & Gas	Active
WELL 16	Oil & Gas	Active
WELL 17	Oil & Gas	Active
WELL 18	Oil & Gas	Active
WELL 19	Oil & Gas	Active
WELL 20	Oil & Gas	Active
WELL 21	Oil & Gas	Active
WELL 22	Oil & Gas	Active
WELL 23	Oil & Gas	Active
WELL 24	Oil & Gas	Active
WELL 25	Oil & Gas	Active
WELL 26	Oil & Gas	Active
WELL 27	Oil & Gas	Active
WELL 28	Oil & Gas	Active
WELL 29	Oil & Gas	Active
WELL 30	Oil & Gas	Active
WELL 31	Oil & Gas	Active
WELL 32	Oil & Gas	Active
WELL 33	Oil & Gas	Active
WELL 34	Oil & Gas	Active
WELL 35	Oil & Gas	Active
WELL 36	Oil & Gas	Active
WELL 37	Oil & Gas	Active
WELL 38	Oil & Gas	Active
WELL 39	Oil & Gas	Active
WELL 40	Oil & Gas	Active
WELL 41	Oil & Gas	Active
WELL 42	Oil & Gas	Active
WELL 43	Oil & Gas	Active
WELL 44	Oil & Gas	Active
WELL 45	Oil & Gas	Active
WELL 46	Oil & Gas	Active
WELL 47	Oil & Gas	Active
WELL 48	Oil & Gas	Active
WELL 49	Oil & Gas	Active
WELL 50	Oil & Gas	Active
WELL 51	Oil & Gas	Active
WELL 52	Oil & Gas	Active
WELL 53	Oil & Gas	Active
WELL 54	Oil & Gas	Active
WELL 55	Oil & Gas	Active
WELL 56	Oil & Gas	Active
WELL 57	Oil & Gas	Active
WELL 58	Oil & Gas	Active
WELL 59	Oil & Gas	Active
WELL 60	Oil & Gas	Active
WELL 61	Oil & Gas	Active
WELL 62	Oil & Gas	Active
WELL 63	Oil & Gas	Active
WELL 64	Oil & Gas	Active
WELL 65	Oil & Gas	Active
WELL 66	Oil & Gas	Active
WELL 67	Oil & Gas	Active
WELL 68	Oil & Gas	Active
WELL 69	Oil & Gas	Active
WELL 70	Oil & Gas	Active
WELL 71	Oil & Gas	Active
WELL 72	Oil & Gas	Active
WELL 73	Oil & Gas	Active
WELL 74	Oil & Gas	Active
WELL 75	Oil & Gas	Active
WELL 76	Oil & Gas	Active
WELL 77	Oil & Gas	Active
WELL 78	Oil & Gas	Active
WELL 79	Oil & Gas	Active
WELL 80	Oil & Gas	Active
WELL 81	Oil & Gas	Active
WELL 82	Oil & Gas	Active
WELL 83	Oil & Gas	Active
WELL 84	Oil & Gas	Active
WELL 85	Oil & Gas	Active
WELL 86	Oil & Gas	Active
WELL 87	Oil & Gas	Active
WELL 88	Oil & Gas	Active
WELL 89	Oil & Gas	Active
WELL 90	Oil & Gas	Active
WELL 91	Oil & Gas	Active
WELL 92	Oil & Gas	Active
WELL 93	Oil & Gas	Active
WELL 94	Oil & Gas	Active
WELL 95	Oil & Gas	Active
WELL 96	Oil & Gas	Active
WELL 97	Oil & Gas	Active
WELL 98	Oil & Gas	Active
WELL 99	Oil & Gas	Active
WELL 100	Oil & Gas	Active