

1801 Broadway
Suite 500
Denver, Colorado 80202



Allison Linz
Regulatory Technician
Tel: 303.398.0355
E-mail:
regulatorypermitting@gwogco.com

12/3/2015

Colorado Oil and Gas Conservation Commission
1120 Lincoln Street, Suite 801
Denver, Colorado 80203

RE: **Proposed Wellbore Spacing Unit**
Marcus LD 11-378HN
Niobrara New Drill

SESE Section 34
Township 1N, Range 67W, 6th P.M.
Weld County, Colorado

Dear Director:

Great Western Operating Company, LLC is planning to drill the above captioned well in accordance with the provisions of COGCC Rule 318A.e.

Great Western proposed wellbore spacing unit consists of:

- W2 Section 2, W2 Section 11: 640 Acres

The 30 day notification time period has passed and we have not received any objections to such well locations or proposed spacing unit, therefore Great Western hereby requests the Director to approve the above mentioned well. Great Western Operating Company, LLC respectfully requests that the COGCC review the enclosed map illustrating the proposed wellbore spacing unit.

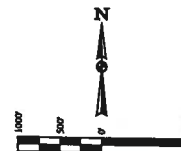
Respectfully,

Allison Linz

Allison Linz
Regulatory Technician
Great Western Operating Company, LLC

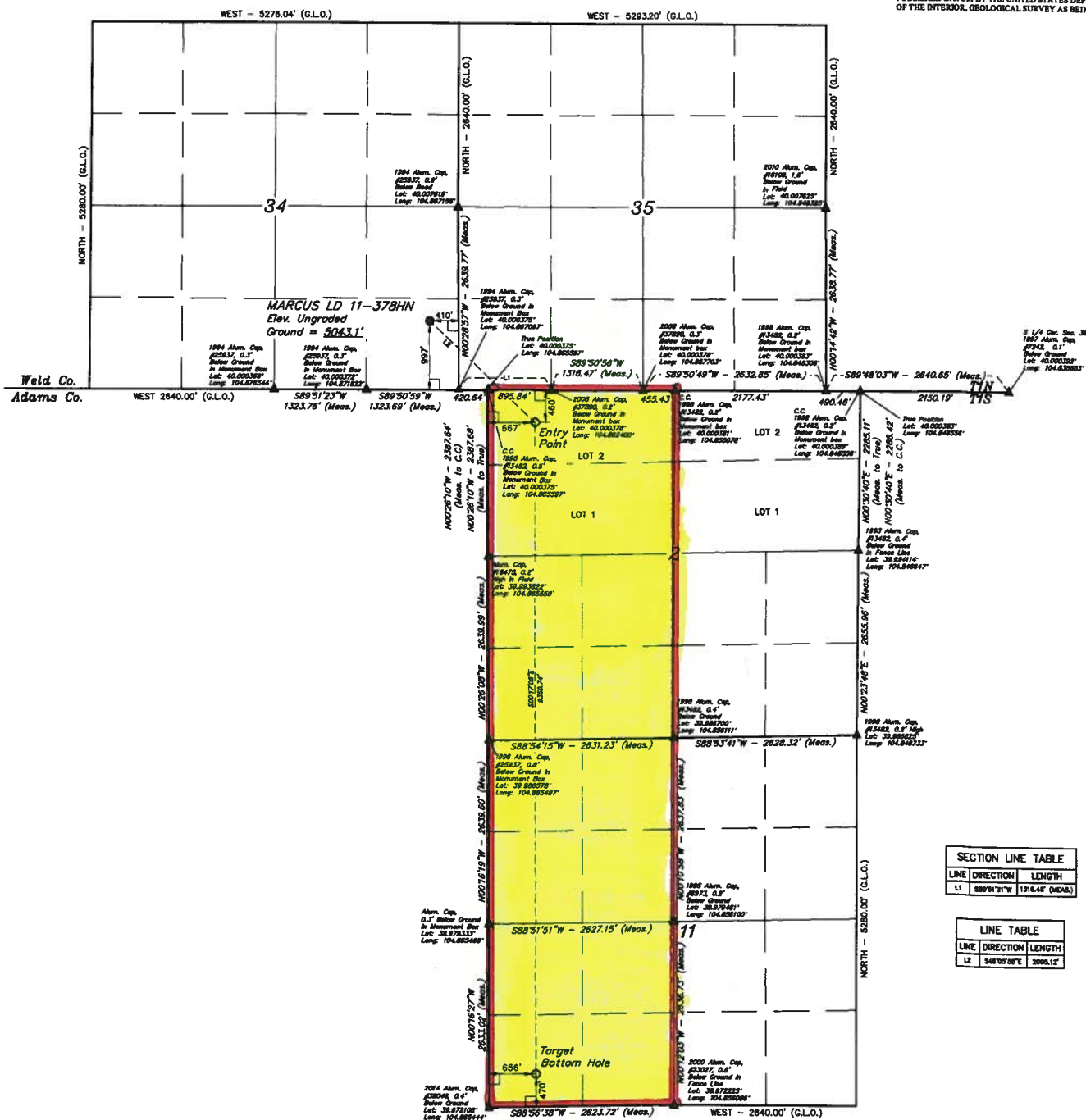
LEGEND:
 — 80' SYMBOL
 ● PROPOSED WELLHEAD
 ○ ENTRY POINT
 ○ TARGET BOTTOM HOLE
 ▲ SECTION CORNERS LOCATED

T1N, R67W, 6th P.M.



BASIS OF BEARINGS IS A C.C. OBSERVATION

BASIS OF ELEVATION
 BENCHMARK R.S. 51 5024 LOCATED IN THE SW 1/4 SE 1/4 OF SECTION 18, T1N, R67W, 6th P.M., TAKEN FROM 1988 PUBLISHED DATUM BY THE UNITED STATES DEPARTMENT OF THE INTERIOR, GEOLOGICAL SURVEY AS BEING 5028 FEET



SECTION LINE TABLE		
LINE	DIRECTION	LENGTH
L1	S89°51'31"W	1318.46' (MEAS.)

LINE TABLE		
LINE	DIRECTION	LENGTH
L2	S48°10'07"E	2086.12'

CERTIFICATE OF RECORD
 THIS IS TO CERTIFY THAT THE ABOVE DESCRIBED SURVEY WAS MADE IN ACCORDANCE WITH THE REQUIREMENTS OF THE LAND SURVEYING ACT AND THAT THE SAME ARE TRUE AND CORRECT TO THE BEST OF MY KNOWLEDGE AND BELIEF

REGISTERED LAND SURVEYOR
 STATE OF COLORADO
 JAMES CHRISTOPHER, J.C.
 11-28-14

GREAT WESTERN OIL & GAS COMPANY
 MARCUS LD 11-378HN
 SE 1/4 SE 1/4, SECTION 34, T1N, R67W, 6th P.M.
 WELD COUNTY, COLORADO

UWELLS, LLC
 Corporate Office • 85 West 280 East
 Vernal, UT 84478 • (435) 785-1917

WELL LOCATION	WELL LOCATION	WELL LOCATION
WELL 1 (ENTRY POINT)	WELL 2 (ENTRY POINT)	WELL 3 (ENTRY POINT)
LATITUDE = 39°54'34" (N 89°11')	LATITUDE = 39°54'34" (N 89°11')	LATITUDE = 39°54'34" (N 89°11')
LONGITUDE = 104°51'47" (W 104°51')	LONGITUDE = 104°51'47" (W 104°51')	LONGITUDE = 104°51'47" (W 104°51')
WELL 4 (ENTRY POINT)	WELL 5 (ENTRY POINT)	WELL 6 (ENTRY POINT)
LATITUDE = 39°54'34" (N 89°11')	LATITUDE = 39°54'34" (N 89°11')	LATITUDE = 39°54'34" (N 89°11')
LONGITUDE = 104°51'47" (W 104°51')	LONGITUDE = 104°51'47" (W 104°51')	LONGITUDE = 104°51'47" (W 104°51')

FDOP = 1.4

SURVEYED BY JAMES CHRISTOPHER, J.C. DATE 11-28-14
 DRAWN BY J.W. DATE 12-01-14
 SCALE 1" = 100' REVISED 06-06-00
 WELL LOCATION PLAT