

1801 Broadway
Suite 500
Denver, Colorado 80202



Allison Linz
Regulatory Technician
Tel: 303.398.0355
E-mail:
regulatorypermitting@gwogco.com

12/3/2015

Colorado Oil and Gas Conservation Commission
1120 Lincoln Street, Suite 801
Denver, Colorado 80203

RE: **Proposed Wellbore Spacing Unit**
Marcus LD 11-376HN
Niobrara New Drill

SESE Section 34
Township 1N, Range 67W, 6th P.M.
Weld County, Colorado

Dear Director:

Great Western Operating Company, LLC is planning to drill the above captioned well in accordance with the provisions of COGCC Rule 318A.e.

Great Western proposed wellbore spacing unit consists of:

- W2 Section 2, W2 Section 11: 640 Acres

The 30 day notification time period has passed and we have not received any objections to such well locations or proposed spacing unit, therefore Great Western hereby requests the Director to approve the above mentioned well. Great Western Operating Company, LLC respectfully requests that the COGCC review the enclosed map illustrating the proposed wellbore spacing unit.

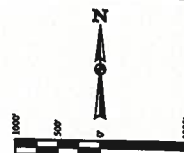
Respectfully,

Allison Linz

Allison Linz
Regulatory Technician
Great Western Operating Company, LLC

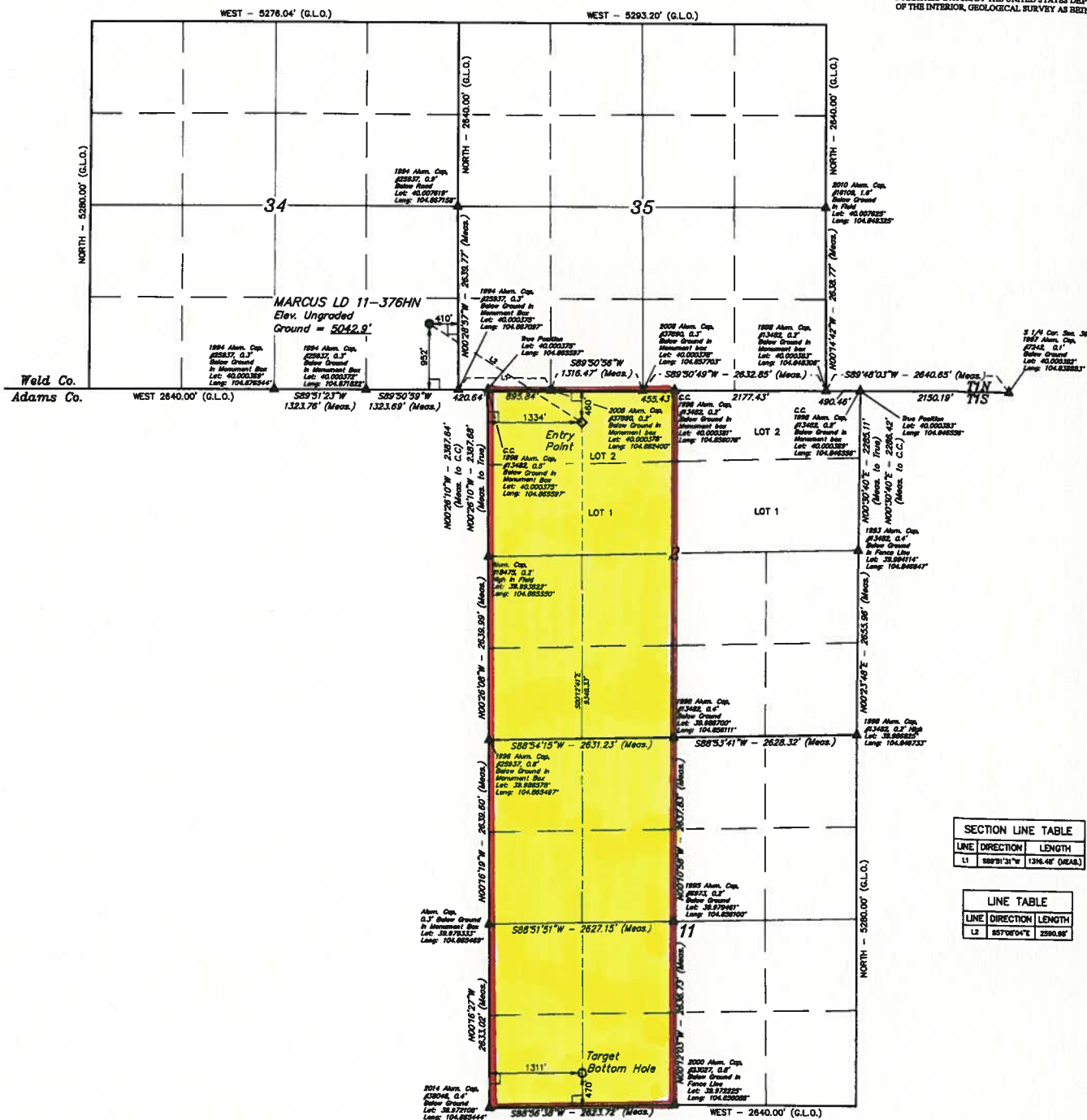
LEGEND:
 - 8" SYMBOL
 - PROPOSED WELLHEAD
 - ENTRY POINT
 - TARGET BOTTOM HOLE
 - SECTION CORNERS LOCATED

T1N, R67W, 6th P.M.



BASE OF BEARINGS
 BASIS OF ELEVATION

BENCHMARK 33 5026 LOCATED IN THE SW 1/4 SE 1/4 OF SECTION 14, T1N, R67W, 6th P.M. TAKEN FROM 1968 PUBLISHED DATUM BY THE UNITED STATES DEPARTMENT OF THE INTERIOR, GEOLOGICAL SURVEY AS BEING 5026 FEET.



SECTION LINE TABLE		
LINE	DIRECTION	LENGTH
11	S89°31'31"W	1346.46' (MEAS.)

LINE TABLE		
LINE	DIRECTION	LENGTH
12	S77°09'41"E	2390.88'

CERTIFICATE OF RECORD
 THIS IS TO CERTIFY THAT THE ABOVE IS A TRUE AND CORRECT COPY OF THE ORIGINAL SURVEY RECORD AS FILED IN THE PUBLIC RECORDS OF THE STATE OF UTAH, AND THAT THE SAME ARE TRUE AND CORRECT TO THE BEST OF OUR KNOWLEDGE AND BELIEF.
 REGISTERED LAND SURVEYOR
 STATE OF UTAH
 15-10-14

GREAT WESTERN OIL & GAS COMPANY
 MARCUS LD 11-376HN
 SE 1/4 SE 1/4, SECTION 34, T1N, R67W, 6th P.M.
 WELD COUNTY, COLORADO

UTAH
 Corporate Office • 85 South 200 East
 Vernal, UT 84076 • (435) 789-1017

RAD BY (LAMP) BOTTOM HOLE LATITUDE = 39°34'24" (N 39°34'24") LONGITUDE = 104°13'18" (W 104°13'18")	RAD BY (ENTRY POINT) LATITUDE = 39°34'24" (N 39°34'24") LONGITUDE = 104°13'18" (W 104°13'18")	RAD BY (BENCH) LOCATION LATITUDE = 39°34'24" (N 39°34'24") LONGITUDE = 104°13'18" (W 104°13'18")	RAD BY (BENCH) LOCATION LATITUDE = 39°34'24" (N 39°34'24") LONGITUDE = 104°13'18" (W 104°13'18")
RAD BY (LAMP) BOTTOM HOLE LATITUDE = 39°34'24" (N 39°34'24") LONGITUDE = 104°13'18" (W 104°13'18")	RAD BY (ENTRY POINT) LATITUDE = 39°34'24" (N 39°34'24") LONGITUDE = 104°13'18" (W 104°13'18")	RAD BY (BENCH) LOCATION LATITUDE = 39°34'24" (N 39°34'24") LONGITUDE = 104°13'18" (W 104°13'18")	RAD BY (BENCH) LOCATION LATITUDE = 39°34'24" (N 39°34'24") LONGITUDE = 104°13'18" (W 104°13'18")

FDOP = 1.4

WELL LOCATION PLAT