

FORM

21

Rev
08/14

State of Colorado

Oil and Gas Conservation Commission

1120 Lincoln Street, Suite 801, Denver, Colorado 80203
Phone: (303) 894-2100 Fax: (303) 894-2109

Document Number:

400943668

Date Received:

MECHANICAL INTEGRITY TEST

1. Duration of the pressure test must be a minimum of 15 minutes.
2. An original pressure chart must accompany this report if this test was not witnessed by an OGCC representative. Injection well tests must be witnessed by an OGCC representative.
3. For production wells, test pressures must be at a minimum of 300 psig.
4. New injection wells must be tested to maximum requested injection pressure.
5. For injection wells, test pressures must be at least 300 psig or average injection pressure, whichever is greater.
6. A minimum 300 psi differential pressure must be maintained between the tubing and tubing/casing annulus pressure.
7. Do not use this form if submitting under provisions of Rule 326.a(1)B. or C.
8. Written OGCC notification must be provided 10 days prior to the test via Form 42, Field Operations Notice
9. Packers or bridge plugs, etc., must be set within 100 feet of the perforated interval to be considered a valid test.

Complete the Attachment

Checklist

OP OGCC

OGCC Operator Number: 10589	Contact Name Lee Robinson	Pressure Chart		
Name of Operator: WINDY HILL WATER OPERATIONS LLC	Phone: (303) 294-0694	Cement Bond Log		
Address: P.O. BOX 18283		Tracer Survey		
City: DENVER State: CO Zip: 80218 Email: leelee1049@yahoo.com		Temperature Survey		
API Number: 05- 087-08145 OGCC Facility ID Number: 289190		Inspection Number		
Well/Facility Name: WINDY HILL Well/Facility Number: 3-17D				
Location QtrQtr: SENE Section: 17 Township: 3N Range: 55W Meridian: 6				

☐ SHUT-IN PRODUCTION WELL ☒ INJECTION WELL Last MIT Date: 4/23/2015 12:00:00 AM

Test Type:

☐ Test to Maintain SI/TA status ☐ 5-Year UIC ☐ Reset Packer

☐ Verification of Repairs ☐ Annual UIC TEST

☐ Describe Repairs or Other Well Activities: New Injection Well - Establish Max Wellhead Operating for Class II UIC Injection Operations

Wellbore Data at Time of Test				Casing Test Use when perforations or open hole is isolated by bridge plug or cement plug; use if cased-hole only with plug back total depth. Bridge Plug or Cement Plug Depth 5385
Injection Producing Zone(s)	Perforated Interval	Open Hole Interval		
JSND	5130 to 5300	170		
Tubing Casing/Annulus Test				
Tubing Size:	Tubing Depth:	Top Packer Depth:	Multiple Packers?	
5.5	5050	5050	<input type="checkbox"/>	

Test Data (Use -1 for a vacuum)				
Test Date	Well Status During Test	Casing Pressure Before Test	Initial Tubing Pressure	Final Tubing Pressure
12-09-2015	SHUT -IN	0	0	0
Casing Pressure Start Test	Casing Pressure - 5 Min.	Casing Pressure - 10 Min.	Casing Pressure Final Test	Pressure Loss or Gain
0	2500			

Test Witnessed by State Representative? ☒ OGCC Field Representative Schure, Kym

I hereby certify all statements made in this form are, to the best of my knowledge, true, correct, and complete.

Signed:

Print Name: Lee Robinson

Title: Vice President

Email: leelee1049@yahoo.com

Date:

Based on the information provided herein, this Notice (Form 21) complies with COGCC Rules and applicable orders and is hereby approved.

COGCC Approved:

Date: 12-9-15

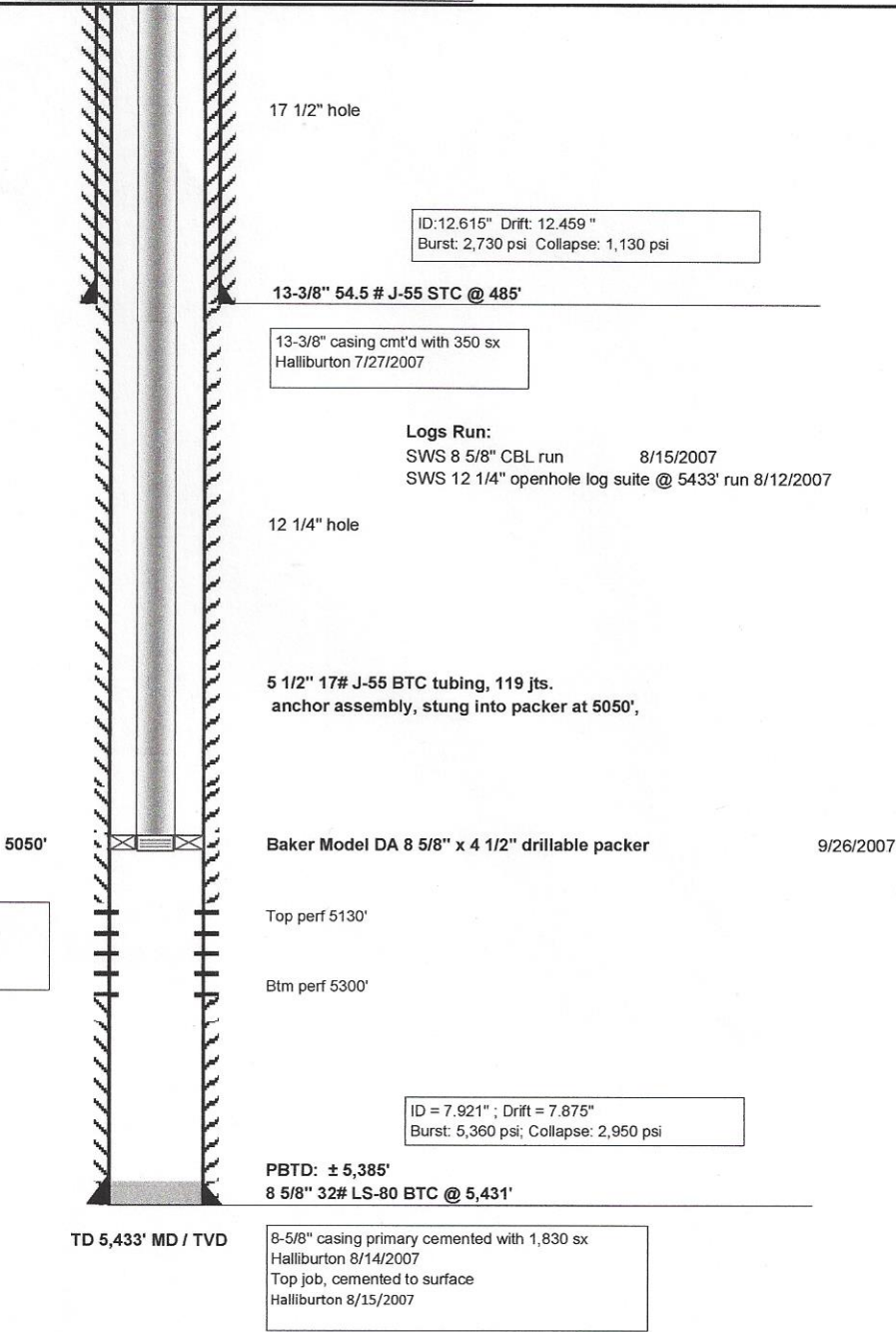
CONDITIONS OF APPROVAL, IF ANY:

Windy Hill Water Operations, LLC (#10589)
Windy Hill 3-17D
SENE Sec 17 T3N R55W
Morgan County, Colorado
API # 05-087-08145-00
Wellbore Diagram

Lat: 40.22797
Long: 103.54929
KB = 4,499' (18 FT above GL)
GL elevation = 4,481'

11/24/2015
FLR
(info from previous operator's file)

NOTE: 11" 3,000 WP tubing head w/ 4 1/2" valves.
13 5/8" 3M SOW casing head



Facility ID: 313965