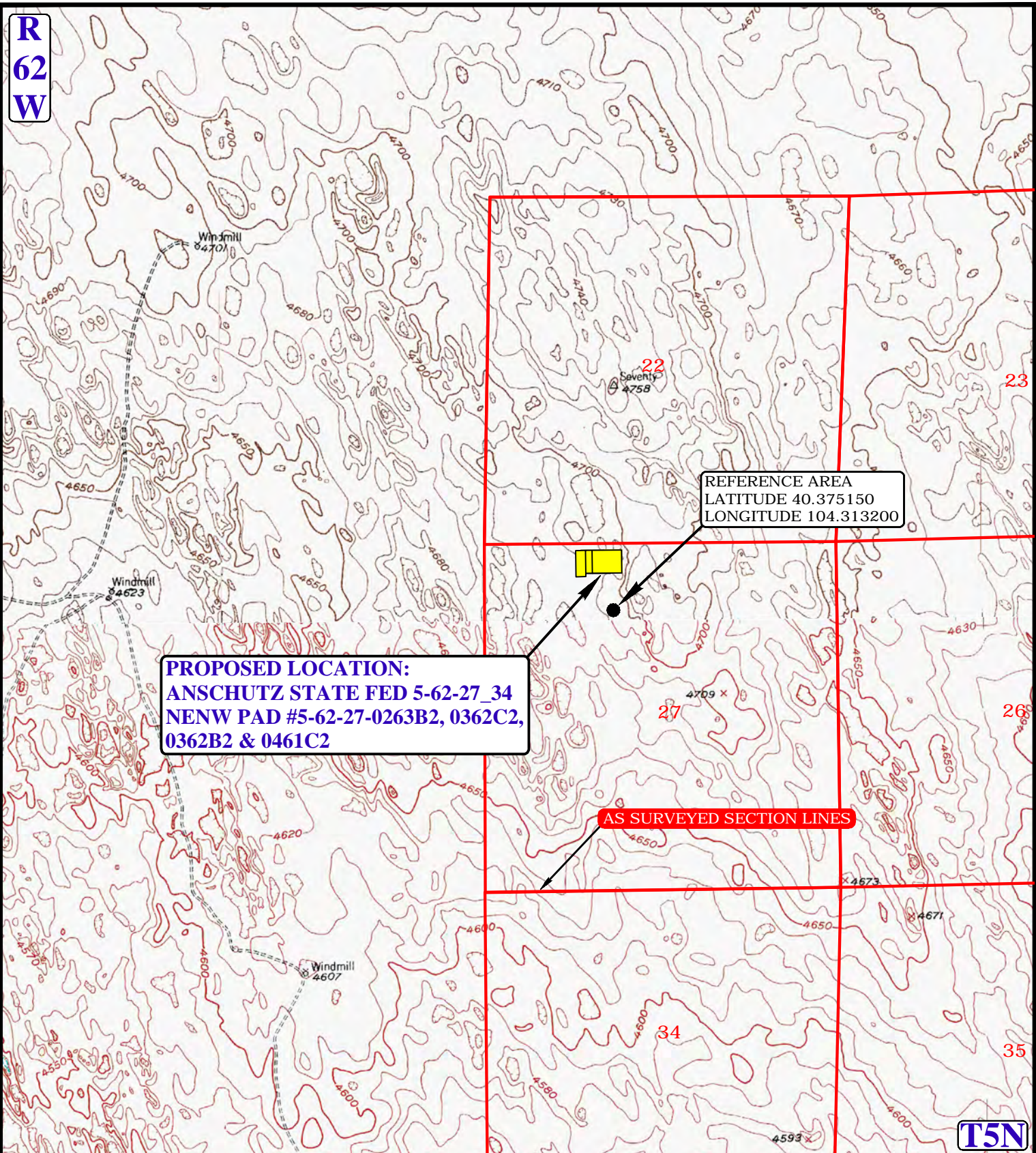


**R
62
W**



**PROPOSED LOCATION:
ANSCHUTZ STATE FED 5-62-27_34
NENW PAD #5-62-27-0263B2, 0362C2,
0362B2 & 0461C2**

**REFERENCE AREA
LATITUDE 40.375150
LONGITUDE 104.313200**

AS SURVEYED SECTION LINES

T5N

LEGEND:

BILL BARRETT CORPORATION

**ANSCHUTZ STATE FED 5-62-27_34 NENW PAD
#5-62-27-0263B2, 0362C2, 0362B2 & 0461C2
NE 1/4 NW 1/4, SECTION 27, T5N, R62W, 6th P.M.
WELD COUNTY, COLORADO**



UELS, LLC
Corporate Office * 85 South 200 East
Vernal, UT 84078 * (435) 789-1017

DRAWN BY: J.L.G.	DATE DRAWN: 09-27-14
SCALE: 1" = 2000'	REV: 08-10-15

REFERENCE AREA MAP REF TOPO