



**Bill Barrett Corporation**

September 22, 2015

**Re: Anschutz State 5-62-27\_34 Sec 27 NENW – Onsite Approval**

**Attn: Steve Freese – Minerals Field Technician**

**State of Colorado surface property**

**T5N-R62W- Section 27&34**

**SHL: NENW Sec 27, T5N-R62W**

Dear Mr. Freese,

Bill Barrett Corporation (“BBC”) desires to drill five (4) wells on the **Anschutz State 5-62-27\_34 Sec 27 NENW Pad** (“the Well Pad”). The Well Pad is operated by Bill Barrett Corporation on State of Colorado surface property. The State of Colorado owns minerals within the spacing unit comprising 5N-62W sections 27 and 34. The minerals are leased to Bill Barrett Corporation under Oil and Gas Lease numbers 9797.8 and 9798.8.

Sincerely,

BILL BARRETT CORPORATION

Justin Mihalcin  
303-312-8745

I hereby acknowledge that a satisfactory onsite was performed on 9-22-2015 and I have received survey plats for the **Anschutz State 5-62-27\_34 Sec 27 NENW Pad**.

COLORADO STATE LAND BOARD

By: \_\_\_\_\_

Steve Freese  
Mineral Field Technician  
State Board of Land Commissioners

Date: \_\_\_\_\_

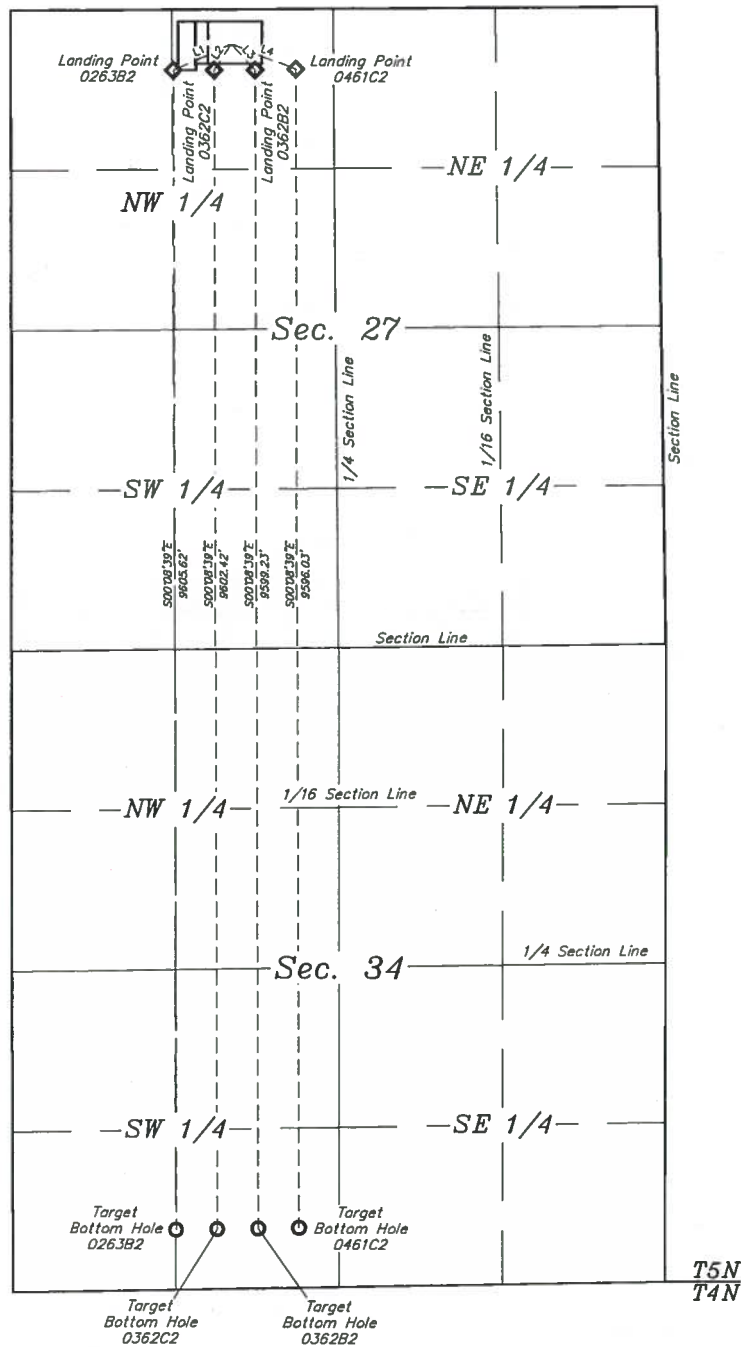
11/10/15

**LEGEND:**

- ◆ = LANDING POINT.  
 ○ = TARGET BOTTOM HOLE.



LINE TABLE		
LINE	DIRECTION	LENGTH
L1	S66°12'35"W	505.42'
L2	S34°32'38"W	244.19'
L3	S43°04'21"E	271.63'
L4	S68°59'22"E	545.78'



**UELS, LLC**  
 Corporate Office \* 85 South 200 East  
 Vernal, UT 84078 \* (435) 789-1017

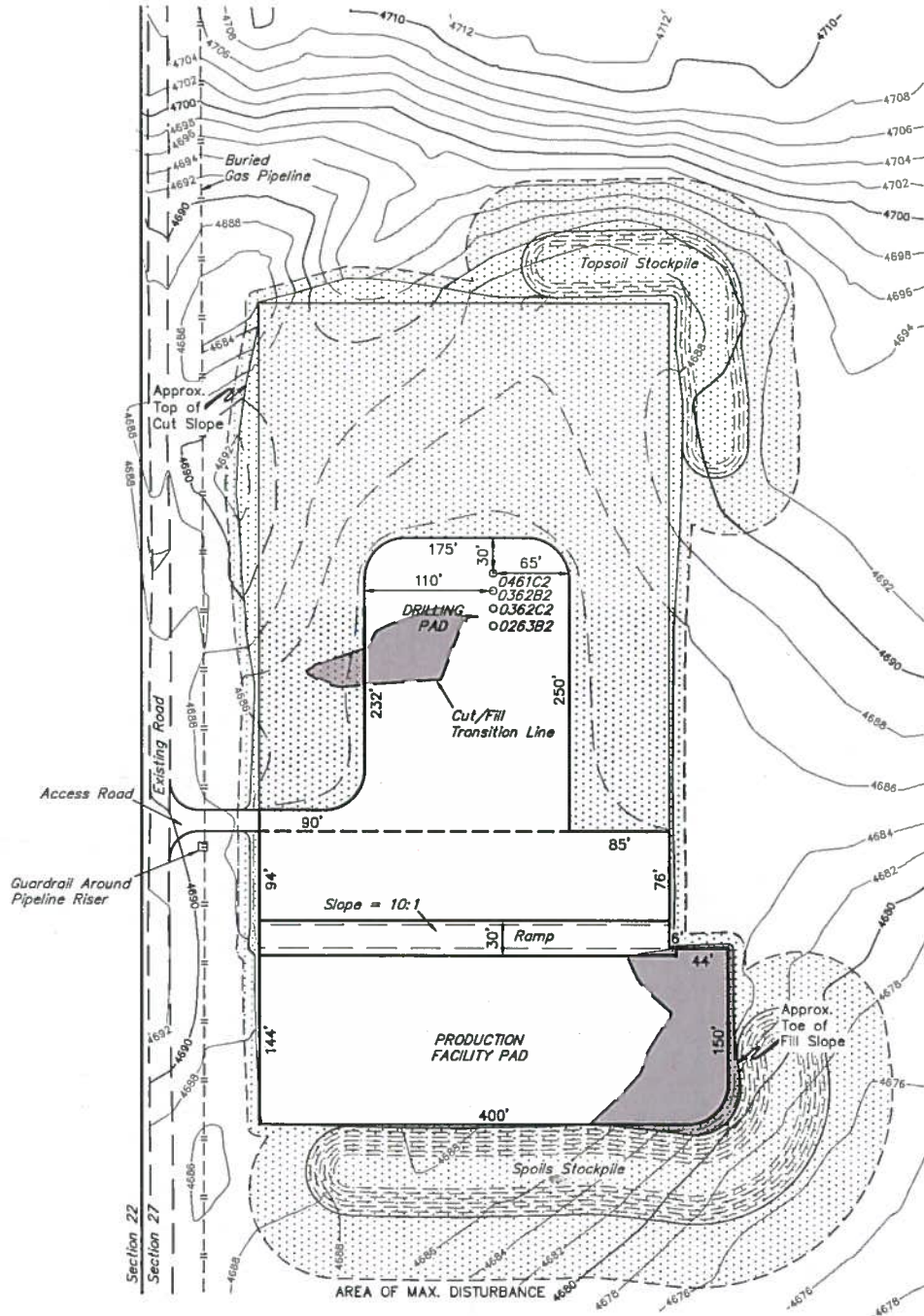
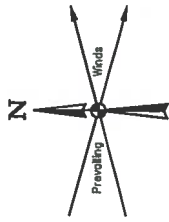
**BILL BARRETT CORPORATION**

ANSCHUTZ STATE FED 5-62-27 34 NENW PAD  
 #5-62-27-0263B2, 0362C2, 0362B2 & 0461C2  
 NE 1/4 NW 1/4, SECTION 27, T5N, R62W, 6th P.M.  
 WELD COUNTY, COLORADO

DRAWN BY: J.S.	DATE DRAWN: 08-01-14
SCALE: 1" = 1000'	REVISED: 07-30-15 K.B.

**MULTI-WELL PLAN**

**FIGURE #5**



APPROXIMATE UN-RECLAIMED ACREAGE =  $\pm 3.210$  ACRES  
 APPROXIMATE RECLAIMED ACREAGE =  $\pm 6.153$  ACRES  
 TOTAL ACREAGE =  $\pm 9.363$  ACRES

**NOTES:**  
 • Contours shown at 2' intervals.

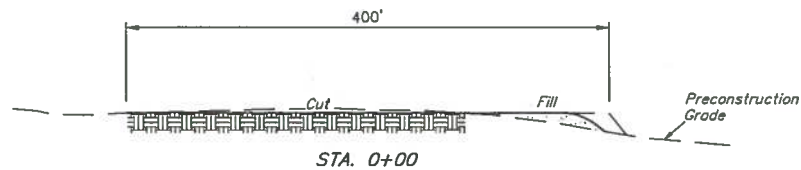
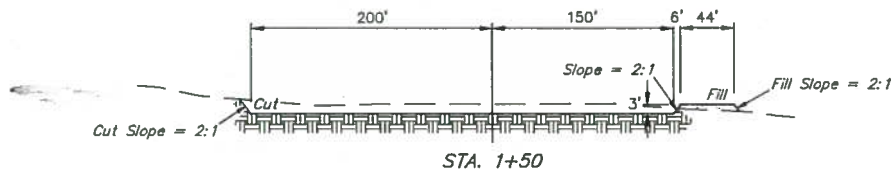
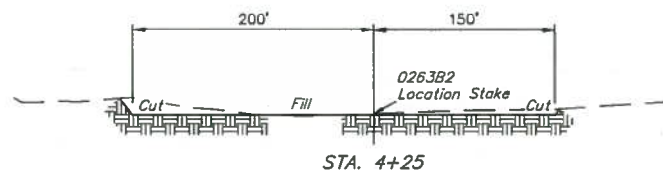
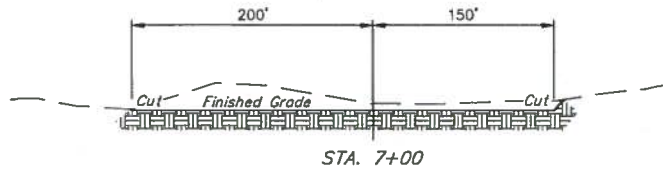
**BILL BARRETT CORPORATION**  
 ANSCHUTZ STATE FED 5-62-27 34 NENW PAD  
 #5-62-27-0263B2, 0362C2, 0362B2 & 0461C2  
 NE 1/4 NW 1/4, SECTION 27, T5N, R62W, 6th P.M.  
 WELD COUNTY, COLORADO



**UELS, LLC**  
 Corporate Office \* 85 South 200 East  
 Vernal, UT 84078 \* (435) 789-1017

DRAWN BY: J.S.	DATE DRAWN: 08-01-14
SCALE: 1" = 100'	REVISED: 07-30-15 K.B.
<b>INTERIM RECLAMATION PLAN</b>	
<b>FIGURE #3</b>	

1" = 40'  
X-Section  
Scale  
1" = 100'



APPROXIMATE EARTHWORK QUANTITIES	
(6") TOPSOIL STRIPPING	4,950 Cu. Yds.
REMAINING LOCATION	19,880 Cu. Yds.
TOTAL CUT	24,830 Cu. Yds.
FILL	1,270 Cu. Yds.
EXCESS MATERIAL	23,560 Cu. Yds.
TOPSOIL	4,950 Cu. Yds.
EXCESS UNBALANCE (After Interim Rehabilitation)	18,610 Cu. Yds.

APPROXIMATE SURFACE DISTURBANCE AREAS		
	DISTANCE	ACRES
WELL SITE DISTURBANCE	NA	±9.363
50' WIDE ACCESS ROAD R-O-W DISTURBANCE	±76.47'	±0.088
TOTAL SURFACE USE AREA		±9.451

**NOTES:**

- Fill quantity includes 5% for compaction.
- Calculations based on 6" of topsoil stripping.

**BILL BARRETT CORPORATION**

ANSCHUTZ STATE FED 5-62-27 34 NENW PAD  
#5-62-27-0263B2, 0362C2, 0362B2 & 0461C2  
NE 1/4 NW 1/4, SECTION 27, T5N, R62W, 6th P.M.  
WELD COUNTY, COLORADO



**UELS, LLC**  
Corporate Office \* 85 South 200 East  
Vernal, UT 84078 \* (435) 789-1017

DRAWN BY: J.S.	DATE DRAWN: 08-01-14
SCALE: AS SHOWN	REVISED: 07-30-15 K.B.
CONSTRUCTION LAYOUT CROSS SECTIONS	<b>FIGURE #2</b>



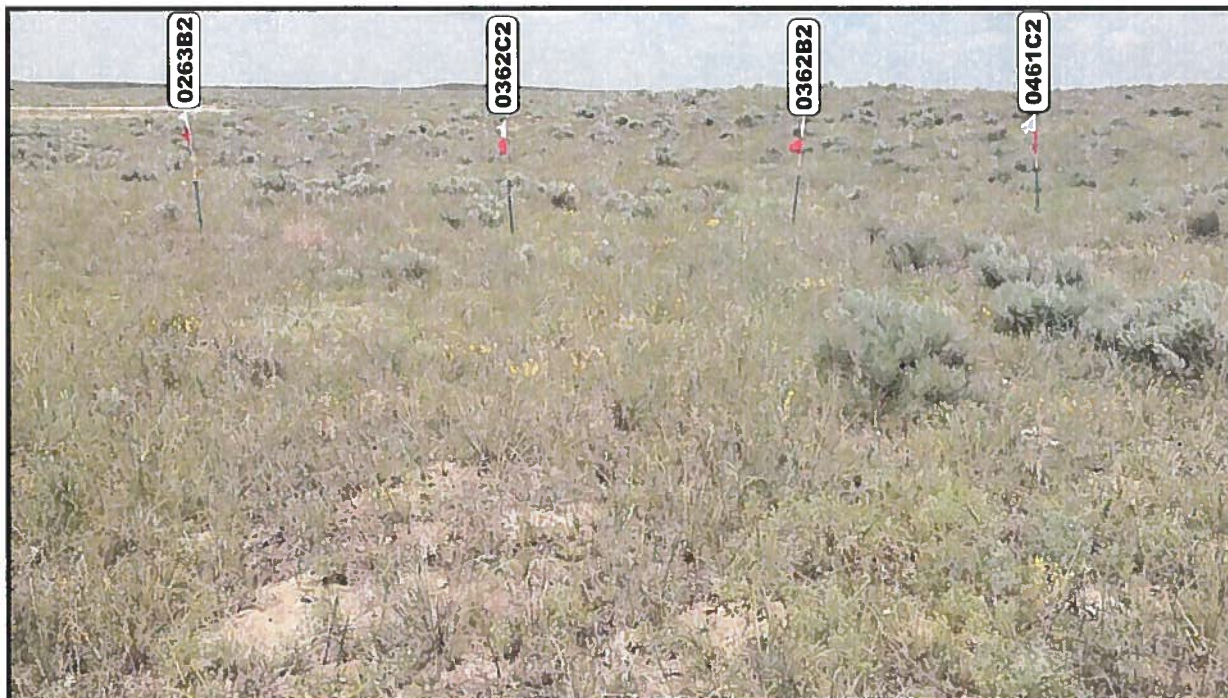


PHOTO: VIEW OF LOCATION STAKES

CAMERA ANGLE: NORTHERLY

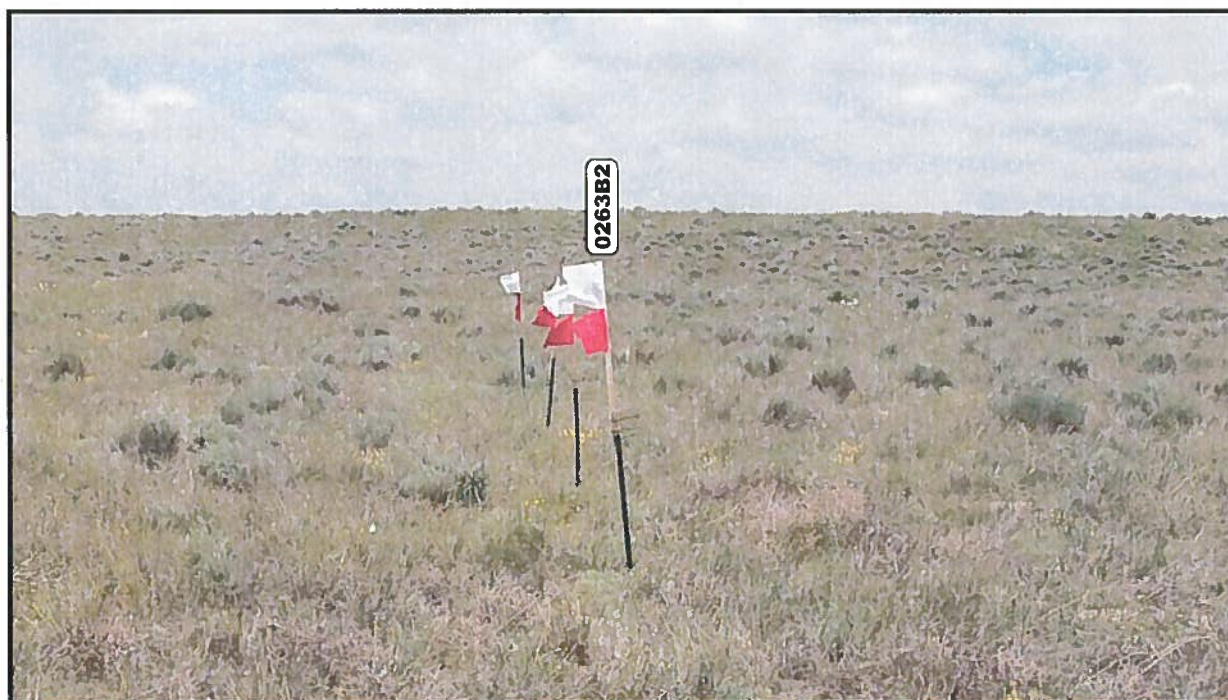


PHOTO: VIEW OF LOCATION STAKES

CAMERA ANGLE: EASTERLY

**BILL BARRETT CORPORATION**

ANSCHUTZ STATE FED 5-62-27 34 NENW PAD  
 #5-62-27-0263B2, 0362C2, 0362B2 & 0461C2  
 NE 1/4 NW 1/4, SECTION 27, T5N, R62W, 6th P.M.  
 WELD COUNTY, COLORADO

DRAWN BY: J.L.G.

DATE DRAWN: 09-27-14

TAKEN BY: D.N.

REV: 08-10-15

**LOCATION PHOTOS**

**PHOTO 1**



**UELS, LLC**

Corporate Office \* 85 South 200 East  
 Vernal, UT 84078 \* (435) 789-1017



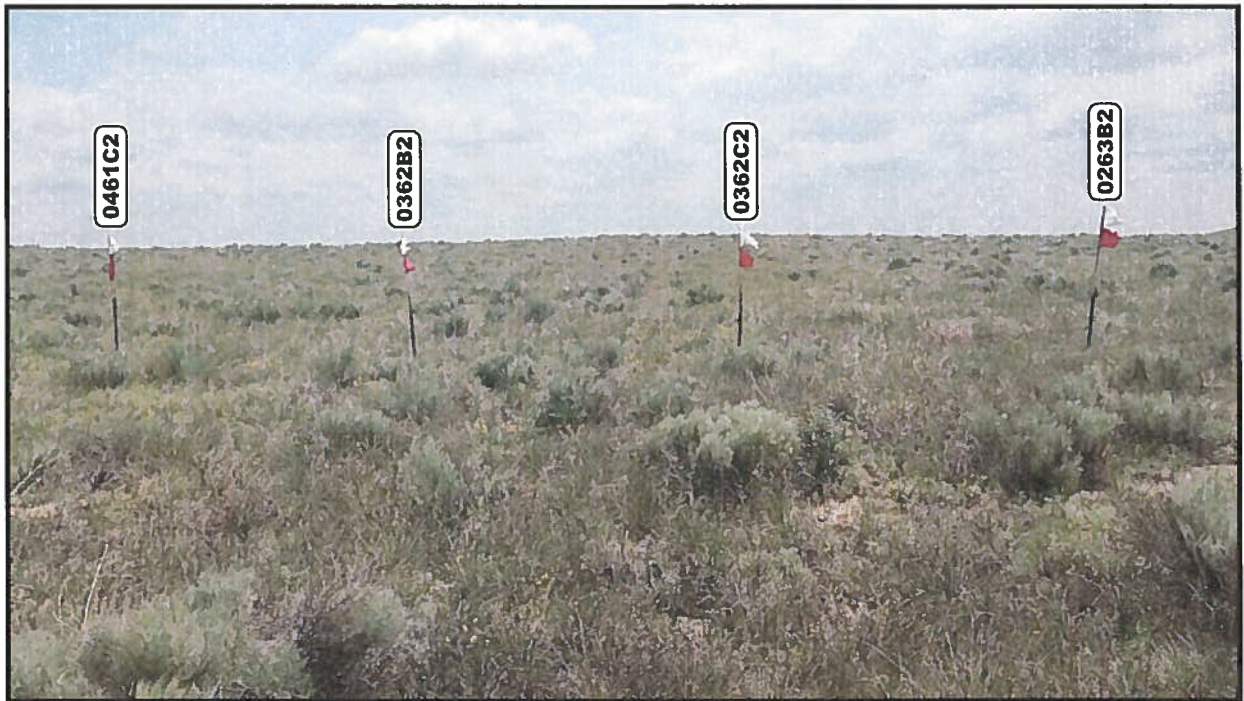


PHOTO: VIEW OF LOCATION STAKES

CAMERA ANGLE: SOUTHERLY

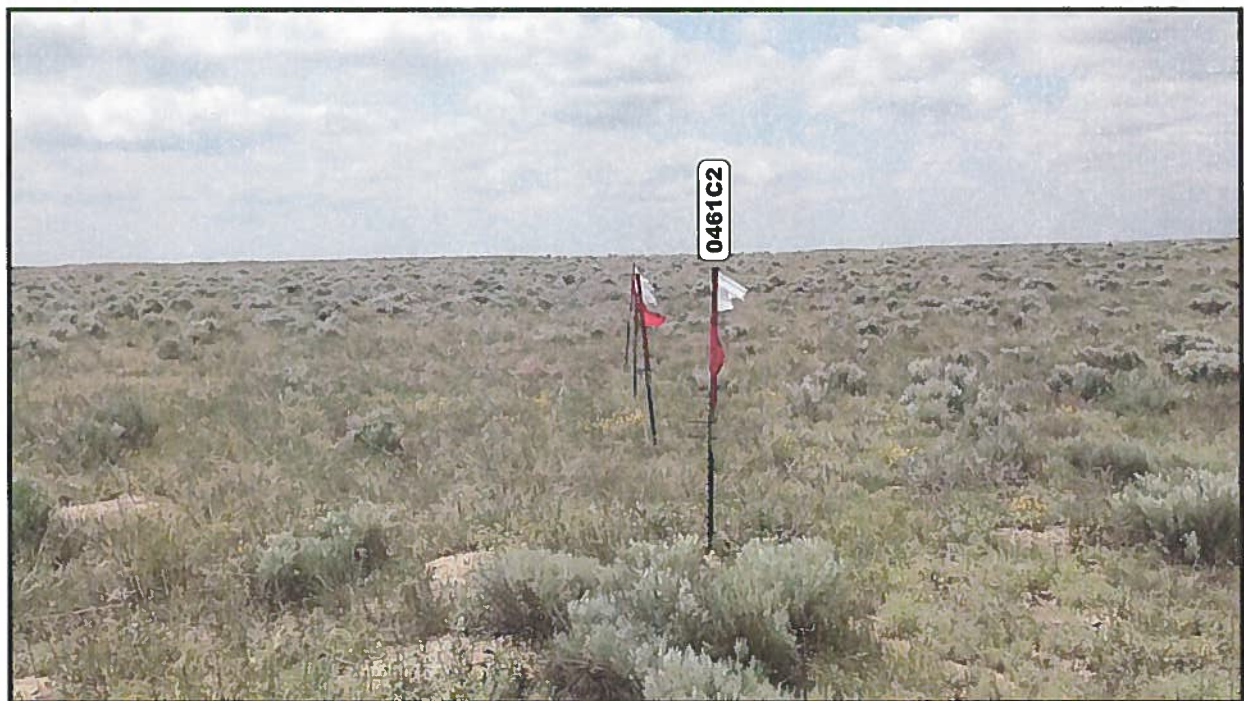


PHOTO: VIEW OF LOCATION STAKES

CAMERA ANGLE: WESTERLY

**BILL BARRETT CORPORATION**

ANSCHUTZ STATE FED 5-62-27 34 NENW PAD  
 #5-62-27-0263B2, 0362C2, 0362B2 & 0461C2  
 NE 1/4 NW 1/4, SECTION 27, T5N, R62W, 6th P.M.  
 WELD COUNTY, COLORADO

DRAWN BY: J.L.G.

DATE DRAWN: 09-27-14

TAKEN BY: D.N.

REV: 08-10-15

**LOCATION PHOTOS**

**PHOTO 2**



**UELS, LLC**

Corporate Office \* 85 South 200 East  
 Vernal, UT 84078 \* (435) 789-1017

# LEGEND:

- 90° SYMBOL
- PROPOSED WELLHEAD
- LANDING POINT
- TARGET BOTTOM HOLE
- SECTION CORNERS LOCATED

T5N, R62W, 6th P.M.

Alum. Cap. #4845  
0.5' High, N/S Fence  
Lat: 40.378017°  
Long: 104.319508°

2008 Alum. Cap.  
Flush W/Ground  
Lat: 40.378150°  
Long: 104.300339°

LINE TABLE		
LINE	DIRECTION	LENGTH
L1	S66°12'35"W	505.42'

1990 Alum. Cap.  
#4845  
Lat: 40.370731°  
Long: 104.319578°

1990 Alum. Cap.  
#4845  
Lat: 40.383444°  
Long: 104.319553°

1990 Alum. Cap.  
#4845  
Lat: 40.358158°  
Long: 104.319528°

1990 Alum. Cap.  
#4845  
Lat: 40.348875°  
Long: 104.319486°

1974 Brass Cap  
Lat: 40.349014°  
Long: 104.309797°

1974 Brass Cap  
Lat: 40.349153°  
Long: 104.300106°

PDOP = 1.4

<b>NAD 83 (TARGET BOTTOM HOLE)</b> LATITUDE = 40°21'01.14" (40 350317) LONGITUDE = 104°18'52.66" (104 314628)	<b>NAD 83 (LANDING POINT)</b> LATITUDE = 40°22'36.04" (40 376678) LONGITUDE = 104°18'53.04" (104 314733)	<b>NAD 83 (SURFACE LOCATION)</b> LATITUDE = 40°22'38.06" (40 377239) LONGITUDE = 104°18'47.07" (104 313075)
<b>NAD 27 (TARGET BOTTOM HOLE)</b> LATITUDE = 40°21'01.21" (40 350336) LONGITUDE = 104°18'50.83" (104 314119)	<b>NAD 27 (LANDING POINT)</b> LATITUDE = 40°22'36.11" (40 376697) LONGITUDE = 104°18'51.22" (104 314228)	<b>NAD 27 (SURFACE LOCATION)</b> LATITUDE = 40°22'38.12" (40 377256) LONGITUDE = 104°18'45.24" (104 312567)
<b>STATE PLANE NAD 83 (CO. NORTH)</b> N: 1372669.44 E: 3330370.89	<b>STATE PLANE NAD 83 (CO. NORTH)</b> N: 1382271.24 E: 3330212.62	<b>STATE PLANE NAD 83 (CO. NORTH)</b> N: 1382481.51 E: 3330672.08
<b>STATE PLANE NAD 27 (CO. NORTH)</b> N: 372671.49 E: 2330520.98	<b>STATE PLANE NAD 27 (CO. NORTH)</b> N: 382273.05 E: 2330362.62	<b>STATE PLANE NAD 27 (CO. NORTH)</b> N: 382483.31 E: 2330822.08

## BASIS OF BEARINGS

BASIS OF BEARINGS IS A U.P.S. OBSERVATION

## BASIS OF ELEVATION

SPOT ELEVATION LOCATED AT THE NORTHEAST CORNER OF SECTION 24, T5N, R62W, 6th P.M. TAKEN FROM THE POINT OF ROCKS, QUADRANGLE, COLORADO, WELD COUNTY, 7.5 MINUTE QUAD (TOPOGRAPHIC MAP) PUBLISHED BY THE UNITED STATES DEPARTMENT OF THE INTERIOR, GEOLOGICAL SURVEY. SAID ELEVATION IS MARKED AS BEING 4350 FEET.



UELS, LLC  
Corporate Office \* 85 South 200 East  
Vernal, UT 84078 \* (435) 789-1017



CERTIFICATE  
THIS IS TO CERTIFY THAT THE ABOVE SURVEY WAS MADE BY ME OR UNDER MY SUPERVISION AND THAT THE SAME ARE TRUE AND CORRECT TO THE BEST OF MY KNOWLEDGE AND BELIEF.

REGISTERED LAND SURVEYOR  
REGISTRATION NO. 28285  
STATE OF COLORADO  
JULY 15, 2015

**BILL BARRETT CORPORATION**  
ANSCHUTZ STATE FED 5-62-27-34 NENW PAD  
#5-62-27-0263B2  
NE 1/4 NW 1/4, SECTION 27, T5N, R62W, 6th P.M.  
WELD COUNTY, COLORADO

SURVEYED BY: BRETT LOWREY, A.F. DATE: 07-09-14  
DRAWN BY: J.S. DATE DRAWN: 08-01-14  
SCALE: 1" = 1000' REVISED: 07-30-15 K.B.

**WELL LOCATION PLAT**



# LEGEND:

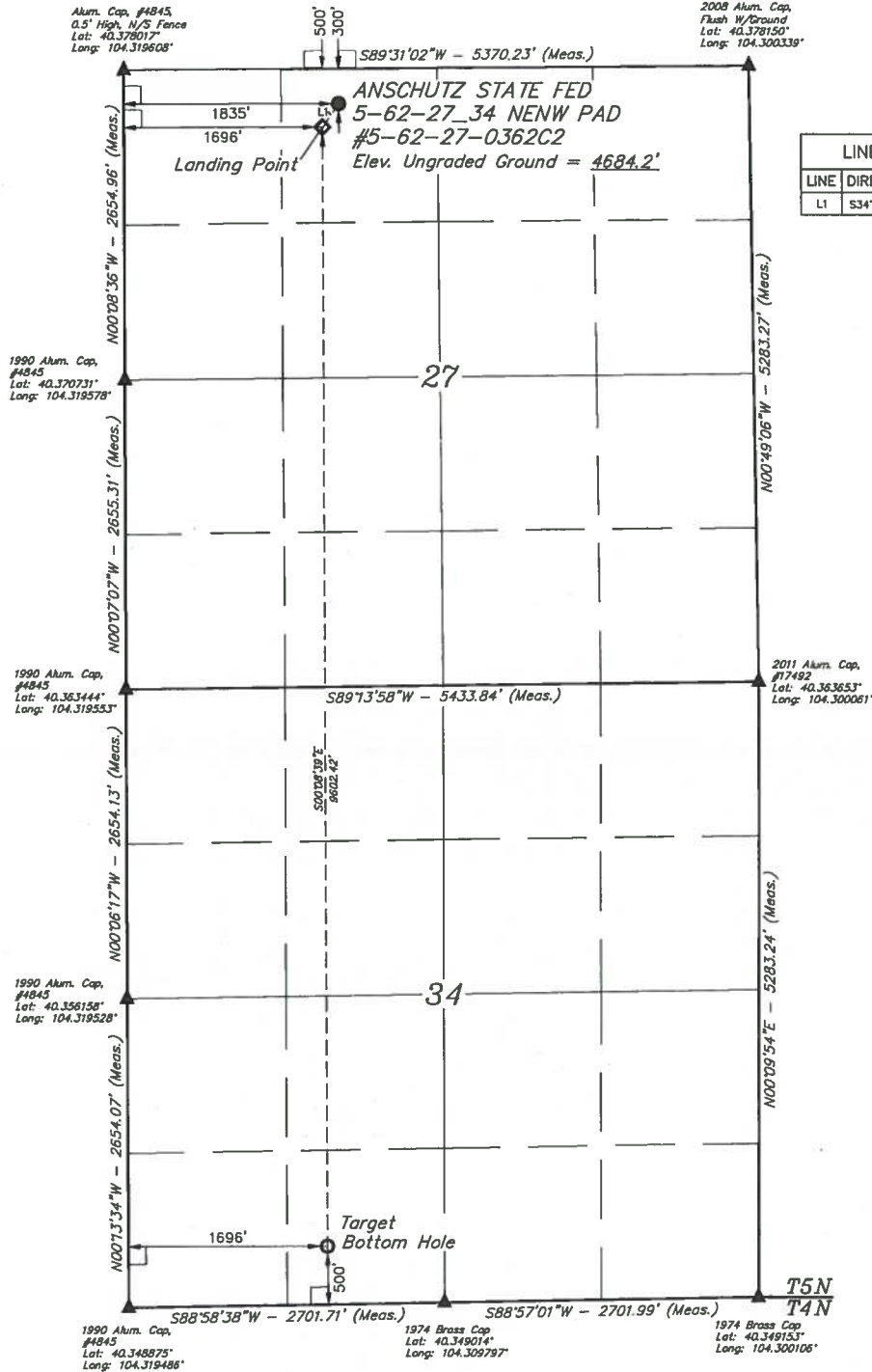
- 90° SYMBOL
- PROPOSED WELLHEAD
- LANDING POINT
- TARGET BOTTOM HOLE
- SECTION CORNERS LOCATED

T5N, R62W, 6th P.M.

Alum. Cap. #4845  
0.5' High, N/S Fence  
Lat: 40.378017°  
Long: 104.319508°

2008 Alum. Cap.  
Flush W/Ground  
Lat: 40.378150°  
Long: 104.300339°

LINE TABLE		
LINE	DIRECTION	LENGTH
L1	S34°32'38"W	244.19'



PDOP = 1.4

NAD 83 (TARGET BOTTOM HOLE)	NAD 83 (LANDING POINT)	NAD 83 (SURFACE LOCATION)
LATITUDE = 40°21'01.20" (40 350333)	LATITUDE = 40°22'36.07" (40 376686)	LATITUDE = 40°22'38.06" (40 377239)
LONGITUDE = 104°18'48.28" (104 313411)	LONGITUDE = 104°18'48.66" (104 313517)	LONGITUDE = 104°18'46.88" (104 313022)
NAD 27 (TARGET BOTTOM HOLE)	NAD 27 (LANDING POINT)	NAD 27 (SURFACE LOCATION)
LATITUDE = 40°21'01.27" (40 350353)	LATITUDE = 40°22'36.14" (40 376706)	LATITUDE = 40°22'38.13" (40 377258)
LONGITUDE = 104°18'46.45" (104 312903)	LONGITUDE = 104°18'46.84" (104 313011)	LONGITUDE = 104°18'45.05" (104 312514)
STATE PLANE NAD 83 (CO. NORTH)	STATE PLANE NAD 83 (CO. NORTH)	STATE PLANE NAD 83 (CO. NORTH)
N: 1372680.22 E: 3330709.66	N: 1382278.83 E: 3330551.45	N: 1382481.83 E: 3330687.06
STATE PLANE NAD 27 (CO. NORTH)	STATE PLANE NAD 27 (CO. NORTH)	STATE PLANE NAD 27 (CO. NORTH)
N: 372682.27 E: 2330859.75	N: 382280.64 E: 2330701.45	N: 382483.63 E: 2330837.06

CERTIFICATE  
THIS IS TO CERTIFY THAT THE ABOVE SET OUT AND PLACED MARKERS AND NOTES OF ACTUAL SURVEYS MADE BY ME AND UNDER MY SUPERVISION AND THAT THE SAME ARE TRUE AND CORRECT TO THE BEST OF MY KNOWLEDGE AND BELIEF.

REGISTERED LAND SURVEYOR  
REGISTRATION NO. 28285  
STATE OF COLORADO  
15

**BASIS OF BEARINGS**  
BASIS OF BEARINGS IS A C.P.S. OBSERVATION  
**BASIS OF ELEVATION**  
SPOT ELEVATION LOCATED AT THE NORTHEAST CORNER OF SECTION 24, T5N, R62W, 6th P.M. TAKEN FROM THE POINT OF ROCKS, QUADRANGLE, COLORADO, WELD COUNTY, 7.5 MINUTE QUAD (TOPOGRAPHIC MAP) PUBLISHED BY THE UNITED STATES DEPARTMENT OF THE INTERIOR, GEOLOGICAL SURVEY. SAID ELEVATION IS MARKED AS BEING 4350 FEET.



**BILL BARRETT CORPORATION**  
ANSCHUTZ STATE FED 5-62-27-34 NENW PAD  
#5-62-27-0362C2  
NE 1/4 NW 1/4, SECTION 27, T5N, R62W, 6th P.M.  
WELD COUNTY, COLORADO

SURVEYED BY: BRETT LOWREY, A.F. DATE: 07-09-14  
DRAWN BY: J.S. DATE DRAWN: 08-01-14  
SCALE: 1" = 1000' REVISED: 07-30-15 K.B.

**WELL LOCATION PLAT**



**UELS, LLC**  
Corporate Office • 85 South 200 East  
Vernal, UT 84078 • (435) 789-1017



# LEGEND:

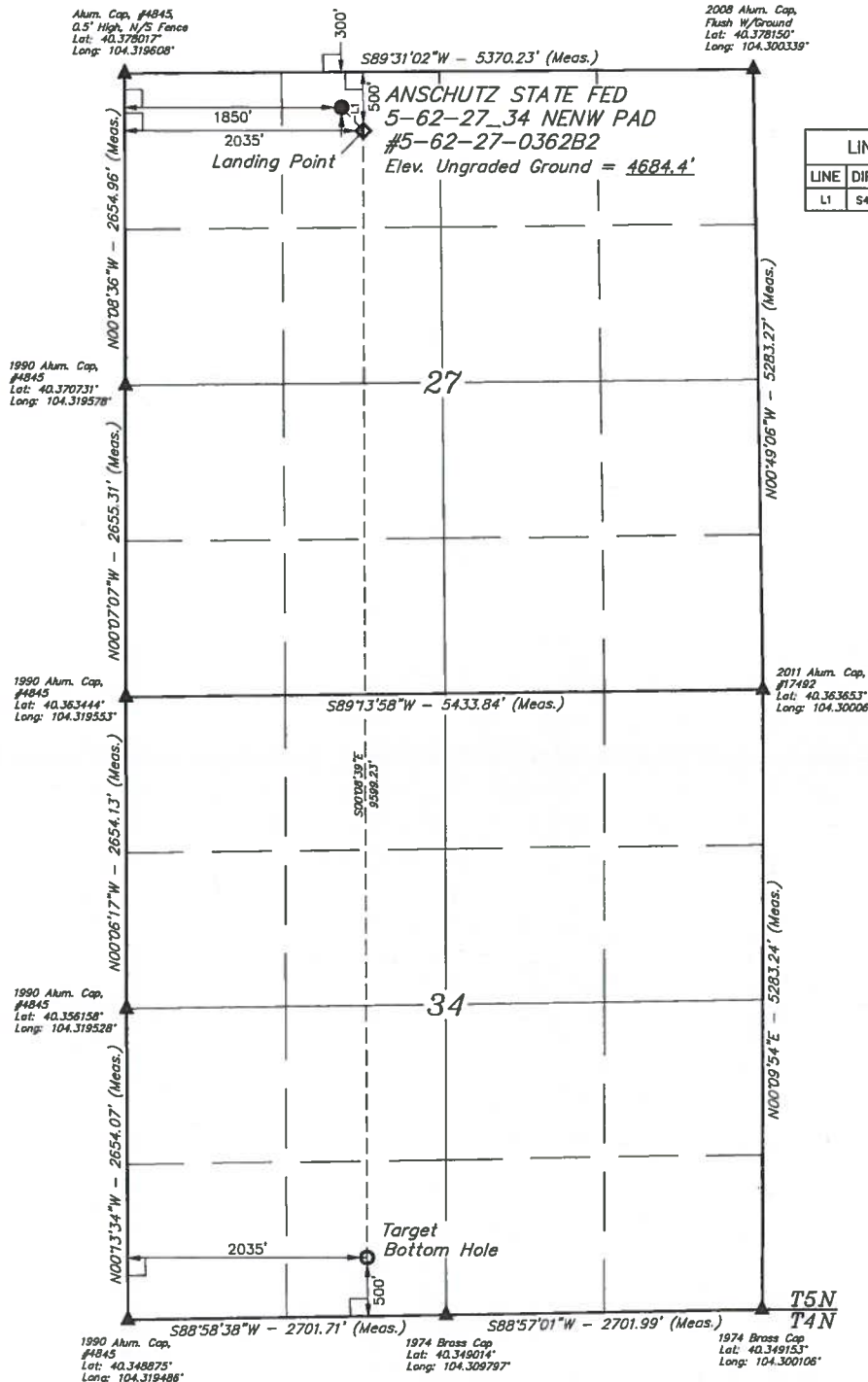
- 90° SYMBOL
- PROPOSED WELLHEAD
- LANDING POINT
- TARGET BOTTOM HOLE
- SECTION CORNERS LOCATED

T5N, R62W, 6th P.M.

Alum. Cap. #4845  
0.5' High, N/S Fence  
Lat: 40.376017°  
Long: 104.319608°

2008 Alum. Cap.  
Flush w/ Ground  
Lat: 40.378150°  
Long: 104.300339°

LINE TABLE		
LINE	DIRECTION	LENGTH
L1	S43°04'21"E	271.63'



PDOP = 1.6

NAD 83 (TARGET BOTTOM HOLE)	NAD 83 (LANDING POINT)	NAD 83 (SURFACE LOCATION)
LATITUDE = 40°21'01.27" (40 350353)	LATITUDE = 40°22'36.10" (40 376694)	LATITUDE = 40°22'38.06" (40 377239)
LONGITUDE = 104°18'43.90" (104 312194)	LONGITUDE = 104°18'44.28" (104 312300)	LONGITUDE = 104°18'46.68" (104 312967)
NAD 27 (TARGET BOTTOM HOLE)	NAD 27 (LANDING POINT)	NAD 27 (SURFACE LOCATION)
LATITUDE = 40°21'01.33" (40 350369)	LATITUDE = 40°22'36.17" (40 376714)	LATITUDE = 40°22'38.13" (40 377258)
LONGITUDE = 104°18'42.07" (104 311686)	LONGITUDE = 104°18'42.46" (104 311794)	LONGITUDE = 104°18'44.86" (104 312461)
STATE PLANE NAD 83 (CO. NORTH)	STATE PLANE NAD 83 (CO. NORTH)	STATE PLANE NAD 83 (CO. NORTH)
N: 1372691.00 E: 3331048.43	N: 1382286.42 E: 3330890.28	N: 1382482.18 E: 3330702.07
STATE PLANE NAD 27 (CO. NORTH)	STATE PLANE NAD 27 (CO. NORTH)	STATE PLANE NAD 27 (CO. NORTH)
N: 372693.05 E: 2331198.52	N: 382288.22 E: 2331040.28	N: 382483.98 E: 2330852.08

## BASIS OF BEARINGS

BASIS OF BEARINGS IS A GPS OBSERVATION

## BASIS OF ELEVATION

SPOT ELEVATION LOCATED AT THE NORTHEAST CORNER OF SECTION 24, T5N, R62W, 6th P.M. TAKEN FROM THE POINT OF ROCKS, QUADRANGLE, COLORADO, WELD COUNTY, 7.5 MINUTE QUAD (TOPOGRAPHIC MAP) PUBLISHED BY THE UNITED STATES DEPARTMENT OF THE INTERIOR, GEOLOGICAL SURVEY. SAID ELEVATION IS MARKED AS BEING 4530 FEET.



UELS, LLC  
Corporate Office \* 85 South 200 East  
Vernal, UT 84078 \* (435) 789-1017



CERTIFICATE  
THIS IS TO CERTIFY THAT THE ABOVE IS A TRUE AND CORRECT COPY OF THE NOTES OF ACTUAL SURVEY MADE BY ME OR UNDER MY SUPERVISION AND THAT THE SAME ARE TRUE AND CORRECT TO THE BEST OF MY KNOWLEDGE AND BELIEF.

REGISTERED LAND SURVEYOR  
REGISTRATION NO. 28283  
STATE OF COLORADO

**BILL BARRETT CORPORATION**  
**ANSCHUTZ STATE FED 5-62-27\_34 NENW PAD**  
**#5-62-27-0362B2**  
**NE 1/4 NW 1/4, SECTION 27, T5N, R62W, 6th P.M.**  
**WELD COUNTY, COLORADO**

SURVEYED BY: BRETT LOWREY, A.F.	DATE: 07-09-14
DRAWN BY: J.S.	DATE DRAWN: 08-01-14
SCALE: 1" = 1000'	REVISED: 07-30-15 K.B.

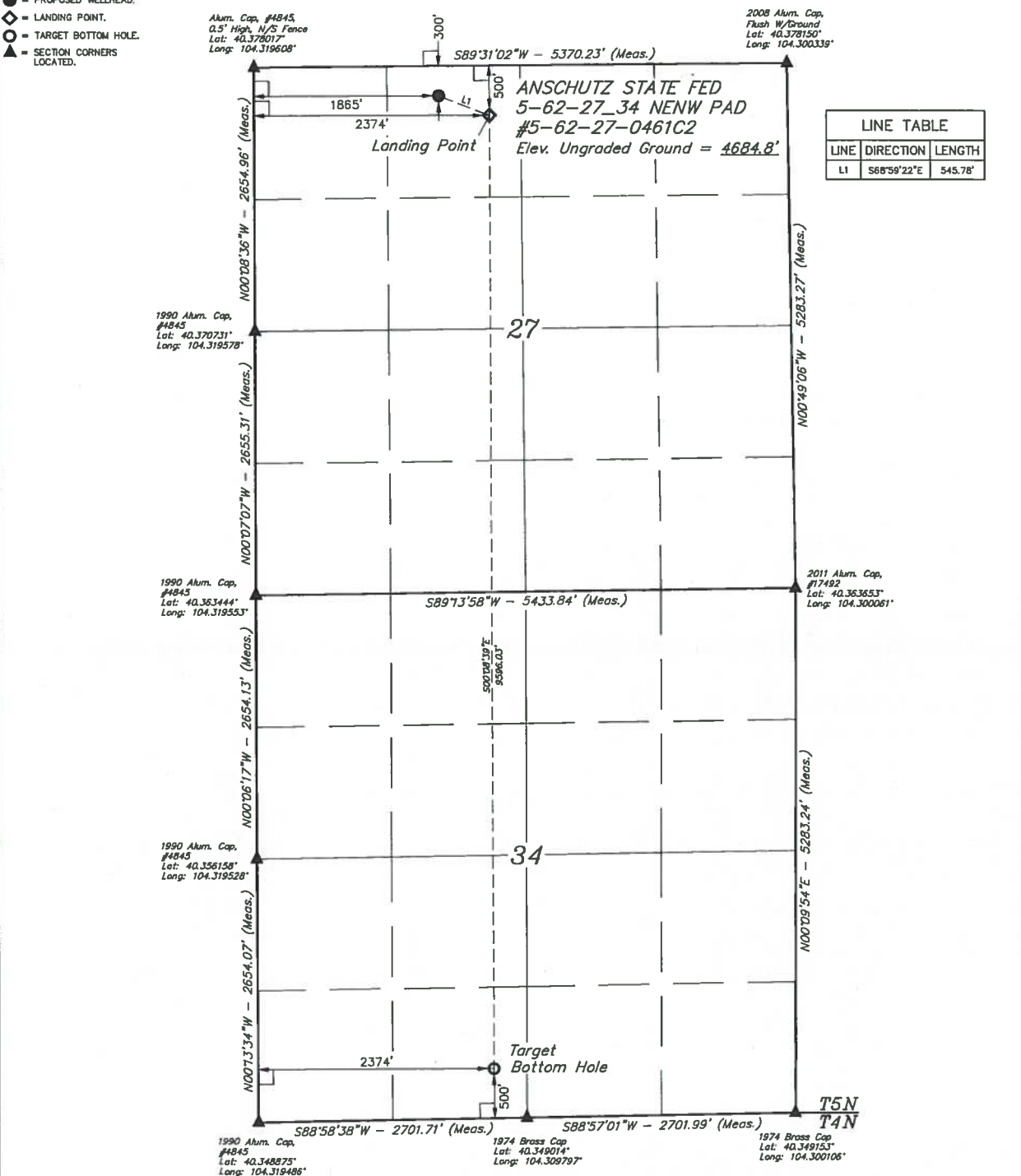
**WELL LOCATION PLAT**

T5N, R62W, 6th P.M.

- Alum. Cap, #4845,  
0.5' High, N/S Fence  
Lat: 40.378017°  
Long: 104.319608°

2008 Akum. Cap,  
Flush W/Ground  
Lot: 40.378150°  
Long: 104.300339°

LINE TABLE		
LINE	DIRECTION	LENGTH
L1	S65°59'22"E	545.78'



<b>NAD 83 (TARGET BOTTOM HOLE)</b>	<b>NAD 83 (LANDING POINT)</b>	<b>NAD 83 (SURFACE LOCATION)</b>
LATITUDE = 40°21'01.33" (40 350369)	LATITUDE = 40°22'36.13" (40 376703)	LATITUDE = 40°22'38.06" (40 377239)
LONGITUDE = 104°18'39.31" (104 310978)	LONGITUDE = 104°18'38.08" (104 311083)	LONGITUDE = 104°18'46.44" (104 312914)
<b>NAD 27 (TARGET BOTTOM HOLE)</b>	<b>NAD 27 (LANDING POINT)</b>	<b>NAD 27 (SURFACE LOCATION)</b>
LATITUDE = 40°21'01.39" (40 350386)	LATITUDE = 40°22'36.20" (40 376722)	LATITUDE = 40°22'38.13" (40 377258)
LONGITUDE = 104°18'37.70" (104 310472)	LONGITUDE = 104°18'38.08" (104 310578)	LONGITUDE = 104°18'44.66" (104 312406)
<b>STATE PLANE NAD 83 (CO. NORTH)</b>	<b>STATE PLANE NAD 83 (CO. NORTH)</b>	<b>STATE PLANE NAD 83 (CO. NORTH)</b>
N 1372701.78 E 3331387.21	N 1382294.01 E 3331229.11	N 1382482.51 E 3330717.07
<b>STATE PLANE NAD 27 (CO. NORTH)</b>	<b>STATE PLANE NAD 27 (CO. NORTH)</b>	<b>STATE PLANE NAD 27 (CO. NORTH)</b>
N 327203.84 E 2331537.30	N 382295.81 E 2331379.12	N 382484.31 E 2330667.07

THIS IS TO CERTIFY THAT THE ABOVE COPY WAS PREPARED FROM ORIGINAL NOTES OF ACTUAL SURVEYS MADE BY ME AND UNDER MY SUPERVISION AND THAT THE SAME ARE TRUE AND CORRECT TO THE BEST OF MY KNOWLEDGE AND BELIEF

REGISTERED LAND SURVEYOR  
REGISTRATION NO. 28285  
STATE OF COLORADO

### BASIS OF BEARINGS

BASIS OF BEARINGS IS A G.P.S. OBSERVATION

**BASIS OF ELEVATION**  
SPOT ELEVATION LOCATED AT THE NORTHEAST CORNER OF SECTION 24, T5N, R62W, 6th P.M.  
TAKEN FROM THE POINT OF ROCKS, QUADRANGLE, COLORADO, WELD COUNTY, 7.5 MINUTE  
QUAD (TOPOGRAPHIC MAP) PUBLISHED BY THE UNITED STATES DEPARTMENT OF THE  
INTERIOR, GEOLOGICAL SURVEY. SAID ELEVATION IS MARKED AS BEING 4350 FEET.



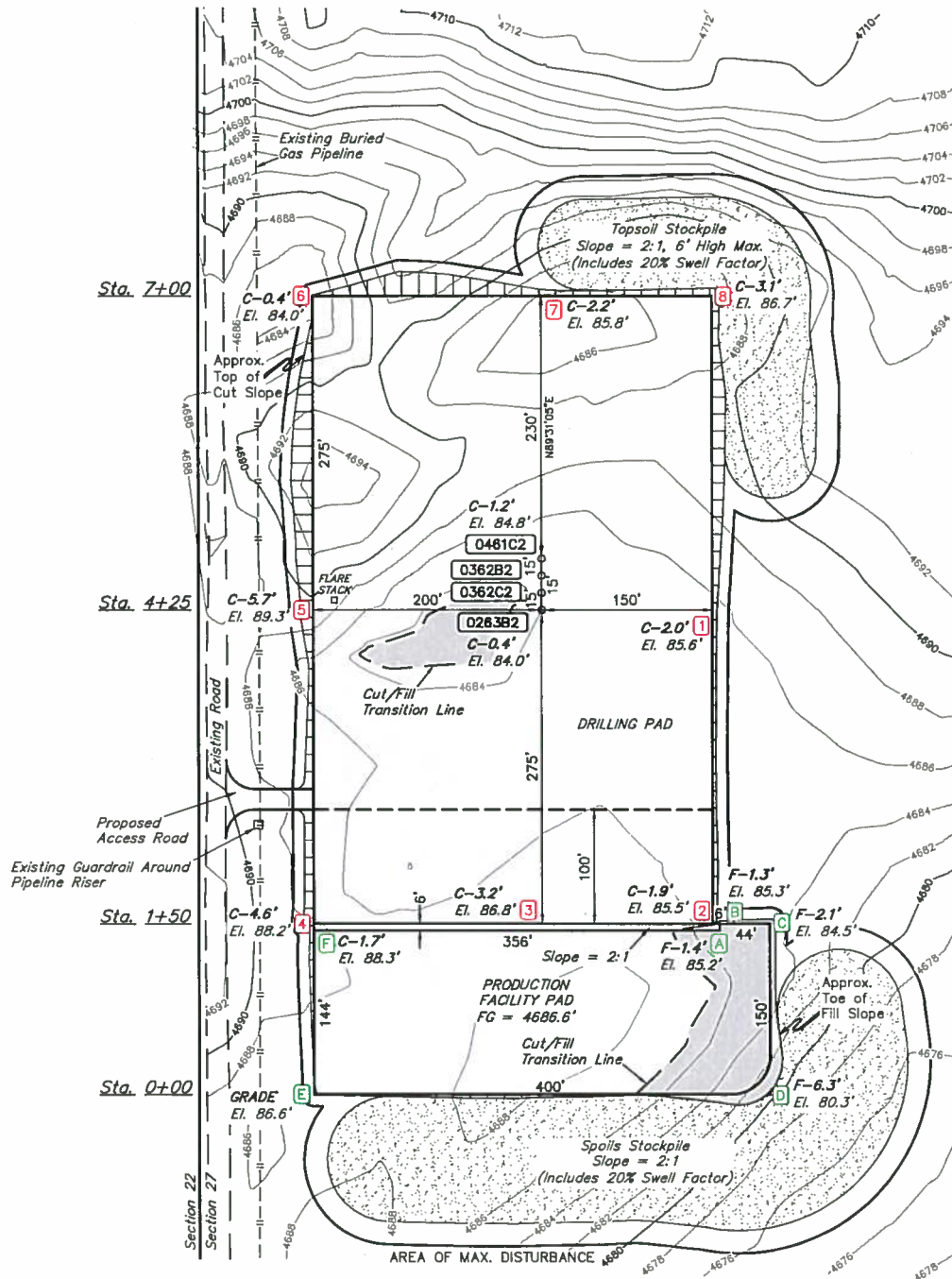
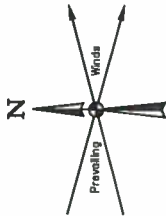
**UELS, LLC**  
Corporate Office \* 85 South 200 East  
Vernal, UT 84078 \* (435) 789-1017



**BILL BARRETT CORPORATION**  
ANSCHUTZ STATE FED 5-62-27 34 NENW PAD  
#5-62-27-0461C2  
NE 1/4 NW 1/4, SECTION 27, T5N, R62W, 6th P.M.  
WELD COUNTY, COLORADO

SURVEYED BY: BRETT LOWREY, A.F.	DATE: 07-09-14
DRAWN BY: J.S.	DATE DRAWN: 08-01-14
SCALE: 1" = 1000'	REVISED: 07-30-15 K.B.

### WELL LOCATION PLAT



DRILLING PAD FINISHED GRADE ELEVATION = 4683.6'

**NOTES:**

- Flare stack is to be located a min. of 100' from the wellhead.
- Round corners at 35' radius or as needed.
- Contours shown at 2' intervals.
- Underground utilities shown on this sheet are for visualization purposes only, actual locations to be determined prior to construction.

**BILL BARRETT CORPORATION**

ANSCHUTZ STATE FED 5-62-27 34 NENW PAD  
#5-62-27-0263B2, 0362C2, 0362B2 & 0461C2  
NE 1/4 NW 1/4, SECTION 27, T5N, R62W, 6th P.M.  
WELD COUNTY, COLORADO



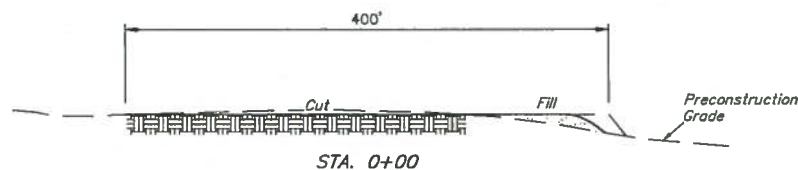
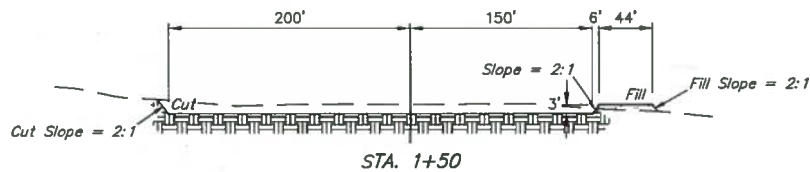
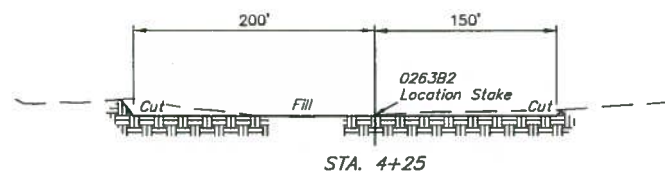
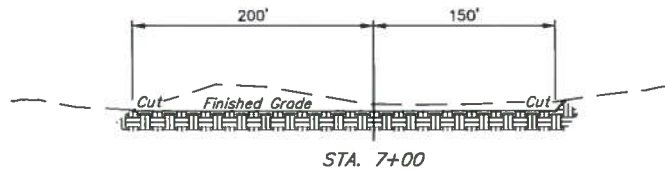
**UELS, LLC**  
Corporate Office • 85 South 200 East  
Vernal, UT 84078 • (435) 789-1017

DRAWN BY: J.S.	DATE DRAWN: 08-01-14
SCALE: 1" = 100'	REVISED: 07-30-15 K.B.

**CONSTRUCTION LAYOUT** **FIGURE #1**



1" = 40'  
X-Section  
Scale  
1" = 100'



APPROXIMATE EARTHWORK QUANTITIES	
(6") TOPSOIL STRIPPING	4,950 Cu. Yds.
REMAINING LOCATION	19,880 Cu. Yds.
TOTAL CUT	24,830 Cu. Yds.
FILL	1,270 Cu. Yds.
EXCESS MATERIAL	23,560 Cu. Yds.
TOPSOIL	4,950 Cu. Yds.
EXCESS UNBALANCE (After Interim Rehabilitation)	18,610 Cu. Yds.

APPROXIMATE SURFACE DISTURBANCE AREAS		
	DISTANCE	ACRES
WELL SITE DISTURBANCE	NA	±9.363
50' WIDE ACCESS ROAD R-O-W DISTURBANCE	±76.47'	±0.088
TOTAL SURFACE USE AREA		±9.451

**NOTES:**

- Fill quantity includes 5% for compaction.
- Calculations based on 6" of topsoil stripping.

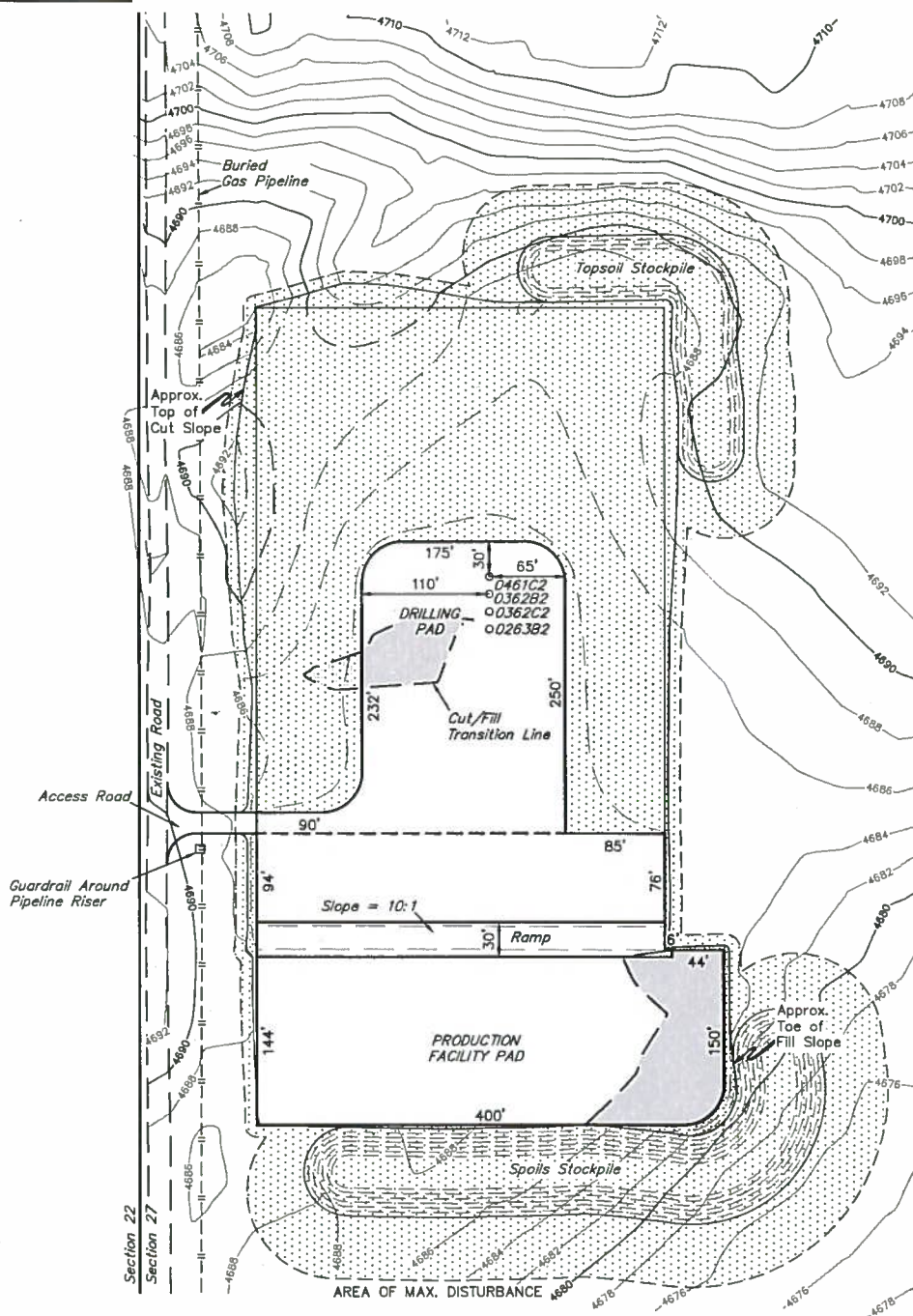
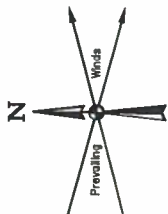
**BILL BARRETT CORPORATION**

ANSCHUTZ STATE FED 5-62-27 34 NENW PAD  
#5-62-27-0263B2, 0362C2, 0362B2 & 0461C2  
NE 1/4 NW 1/4, SECTION 27, T5N, R62W, 6th P.M.  
WELD COUNTY, COLORADO



UELS, LLC  
Corporate Office \* 85 South 200 East  
Vernal, UT 84078 \* (435) 789-1017

DRAWN BY: J.S.	DATE DRAWN: 08-01-14
SCALE: AS SHOWN	REVISED: 07-30-15 K.B.
CONSTRUCTION LAYOUT CROSS SECTIONS	FIGURE #2



**LEGEND:**  
 Reclaimed Area

APPROXIMATE UN-RECLAIMED ACREAGE = ±3.210 ACRES  
 APPROXIMATE RECLAIMED ACREAGE = ±6.153 ACRES  
 TOTAL ACREAGE = ±9.363 ACRES

**NOTES:**  
 • Contours shown at 2' intervals.

**BILL BARRETT CORPORATION**

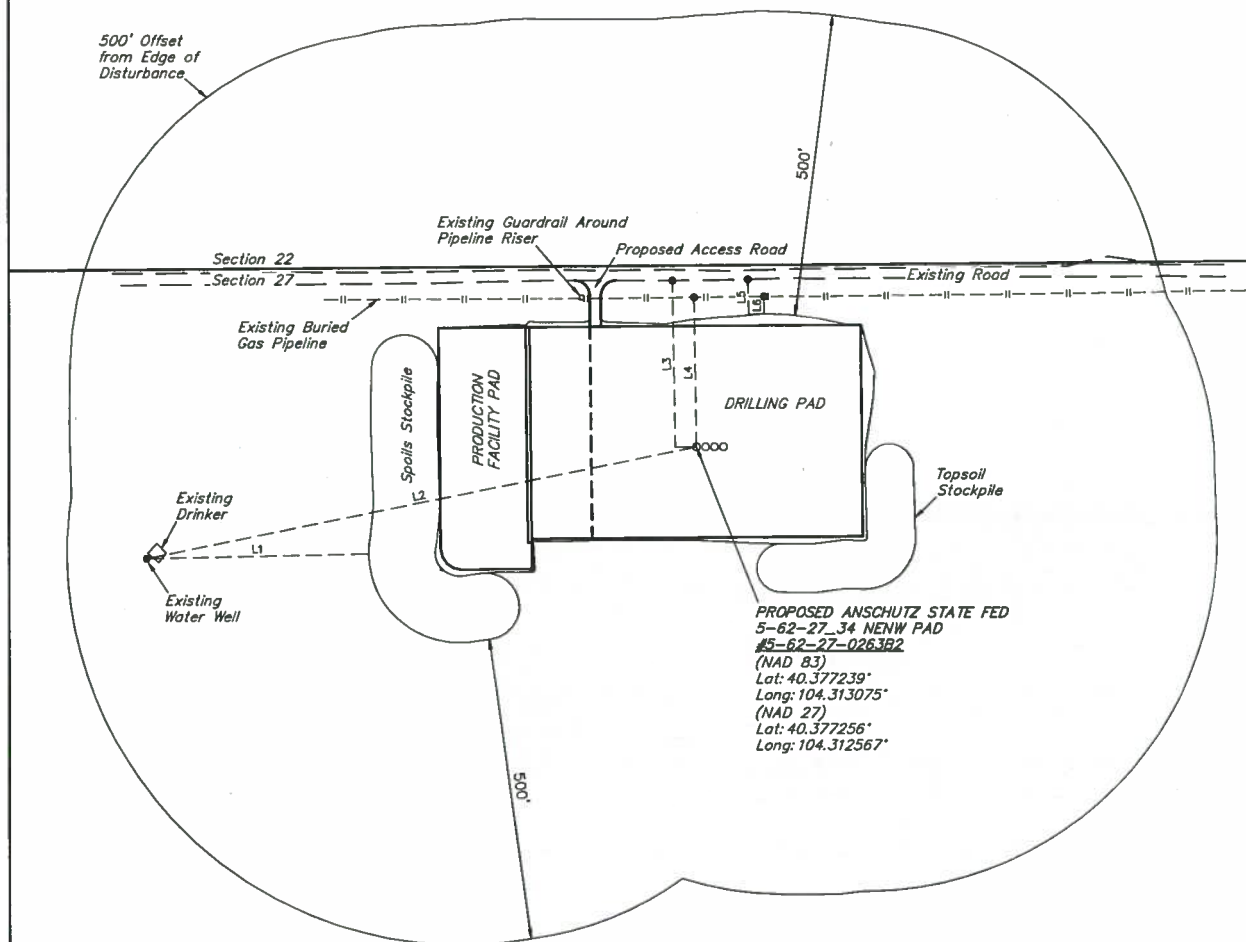
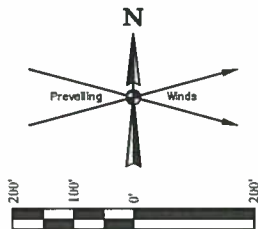
ANSCHUTZ STATE FED 5-62-27 34 NENW PAD  
 #5-62-27-0263B2, 0362C2, 0362B2 & 0461C2  
 NE 1/4 NW 1/4, SECTION 27, T5N, R62W, 6th P.M.  
 WELD COUNTY, COLORADO



**UELS, LLC**  
 Corporate Office • 85 South 200 East  
 Vernal, UT 84078 • (435) 789-1017

DRAWN BY: J.S. DATE DRAWN: 08-01-14  
 SCALE: 1" = 100' REVISED: 07-30-15 K.B.

**INTERIM RECLAMATION PLAN FIGURE #3**



LINE TABLE		
LINE	DIRECTION	LENGTH
L1	S89°W	369'
L2	S79°W	931'
L3	N01°W	275'
L4	N01°W	247'
L5	N02°W	58'
L6	N01°W	28'

#### PLANT COMMUNITY

- ☐ DISTURBED GRASSLAND  
☒ NATIVE GRASSLAND  
☐ SHRUB LAND  
☐ PLAINS RIPARIAN  
☐ MOUNTAIN RIPARIAN  
☐ FOREST LAND  
☐ WETLANDS AQUATIC  
☐ ALPINE  
☐ OTHER (Describe): \_\_\_\_\_

#### CURRENT LAND USE

- CROP LAND: ☐ IRRIGATED ☐ DRY LAND ☐ IMPROVED PASTURE ☐ HAY MEADOW ☐ CRP  
 NON-CROP LAND: ☒ RANGELAND ☐ TIMBER ☐ RECREATIONAL ☐ OTHER (Describe) \_\_\_\_\_  
 SUBDIVIDED: ☐ INDUSTRIAL ☐ COMMERCIAL ☐ RESIDENTIAL

#### FUTURE LAND USE

- CROP LAND: ☐ IRRIGATED ☐ DRY LAND ☐ IMPROVED PASTURE ☐ HAY MEADOW ☐ CRP  
 NON-CROP LAND: ☒ RANGELAND ☐ TIMBER ☐ RECREATIONAL ☐ OTHER (Describe) \_\_\_\_\_  
 SUBDIVIDED: ☐ INDUSTRIAL ☐ COMMERCIAL ☐ RESIDENTIAL

#### BILL BARRETT CORPORATION

ANSCHUTZ STATE FED 5-62-27 34 NENW PAD  
 #5-62-27-0263B2, 0362C2, 0362B2 & 0461C2  
 NE 1/4 NW 1/4, SECTION 27, T5N, R62W, 6th P.M.  
 WELD COUNTY, COLORADO

SURVEYED BY: BRETT LOWREY, A.F. SURVEY DATE: 07-09-14  
 DRAWN BY: J.S. DATE DRAWN: 08-01-14  
 SCALE: 1" = 200' REVISED: 07-30-15 K.B.

LOCATION DRAWING

FIGURE #4



UELS, LLC  
 Corporate Office • 85 South 200 East  
 Vernal, UT 84078 • (435) 789-1017



# **BILL BARRETT CORPORATION**

ANSCHUTZ STATE FED 5-62-27 34 NENW PAD #5-62-27-0263B2, 0362C2, 0362B2 & 0461C2  
NE 1/4 NW 1/4, SECTION 27, T5N, R62W, 6th P.M.  
WELD COUNTY, COLORADO

DATE: 08-01-14

REV: 07-30-15 K.B.

DISTANCES FROM WELLHEAD																
WELL NAME	BUILDING		BUILDING UNIT		HIGH OCCU. BUILDING		D.O.A.A.		PUBLIC ROAD		ABOVE GROUND UTILITY		RAILROAD		PROPERTY LINE	
	DIRECTION	LENGTH	DIRECTION	LENGTH	DIRECTION	LENGTH	DIRECTION	LENGTH	DIRECTION	LENGTH	DIRECTION	LENGTH	DIRECTION	LENGTH	DIRECTION	LENGTH
#5-62-27-0461C2	OVER 1 MILE		OVER 1 MILE		OVER 1 MILE		OVER 1 MILE		OVER 1 MILE		OVER 1 MILE		OVER 1 MILE		NORTH	300'
#5-62-27-0362B2	OVER 1 MILE		OVER 1 MILE		OVER 1 MILE		OVER 1 MILE		OVER 1 MILE		OVER 1 MILE		OVER 1 MILE		NORTH	300'
#5-62-27-0362C2	OVER 1 MILE		OVER 1 MILE		OVER 1 MILE		OVER 1 MILE		OVER 1 MILE		OVER 1 MILE		OVER 1 MILE		NORTH	300'
#5-62-27-0263B2	OVER 1 MILE		OVER 1 MILE		OVER 1 MILE		OVER 1 MILE		OVER 1 MILE		OVER 1 MILE		OVER 1 MILE		NORTH	300'

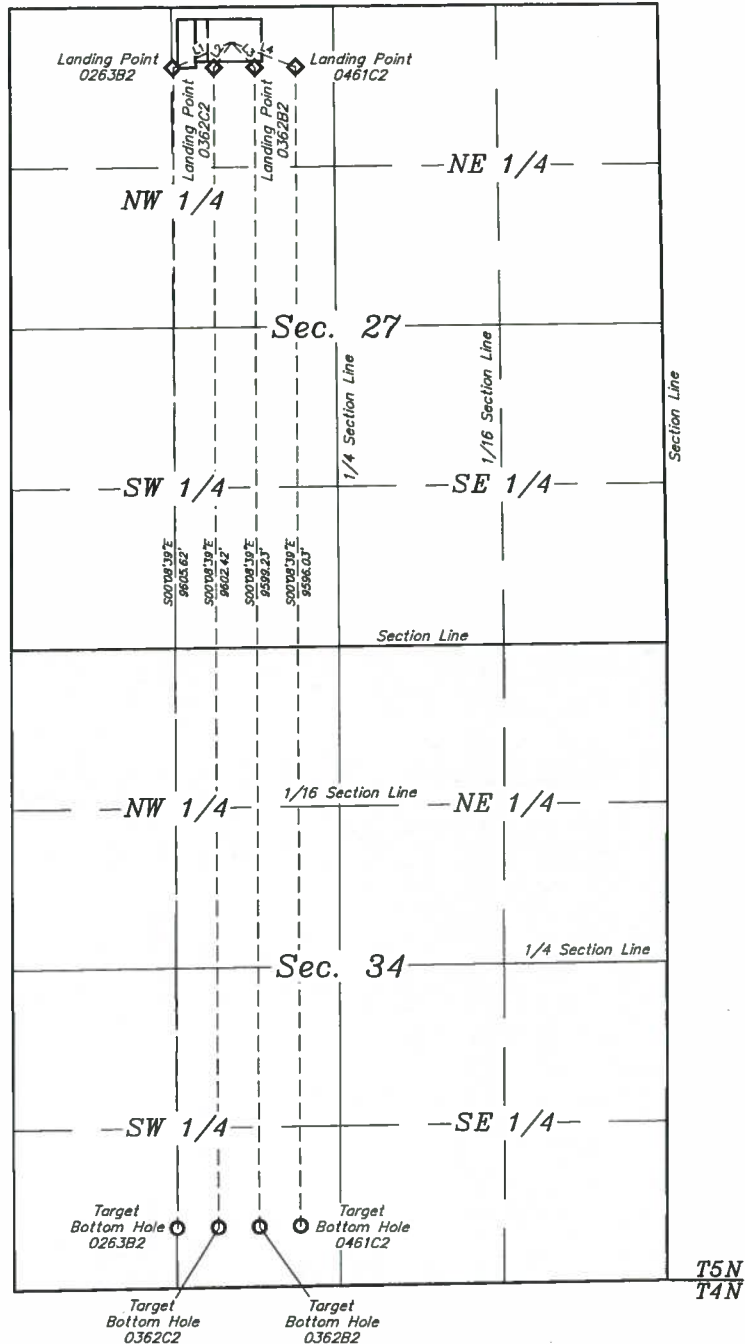
DISTANCES FROM PRODUCTION AREA																
PRODUCTION FEATURE	BUILDING		BUILDING UNIT		HIGH OCCU. BUILDING		D.O.A.A.		PUBLIC ROAD		ABOVE GROUND UTILITY		RAILROAD		PROPERTY LINE	
	DIRECTION	LENGTH	DIRECTION	LENGTH	DIRECTION	LENGTH	DIRECTION	LENGTH	DIRECTION	LENGTH	DIRECTION	LENGTH	DIRECTION	LENGTH	DIRECTION	LENGTH
PRODUCTION AREA	OVER 1 MILE		OVER 1 MILE		OVER 1 MILE		OVER 1 MILE		OVER 1 MILE		OVER 1 MILE		OVER 1 MILE		NORTH	100'

**LEGEND:**

- ◆ = LANDING POINT.  
○ = TARGET BOTTOM HOLE.



LINE TABLE		
LINE	DIRECTION	LENGTH
L1	S86°12'35"W	505.42'
L2	S34°32'38"W	244.19'
L3	S43°04'21"E	271.63'
L4	S68°59'22"E	545.78'



**BILL BARRETT CORPORATION**

ANSCHUTZ STATE FED 5-62-27 34 NENW PAD  
#5-62-27-0263B2, 0362C2, 0362B2 & 0461C2  
NE 1/4 NW 1/4, SECTION 27, T5N, R62W, 6th P.M.  
WELD COUNTY, COLORADO

DRAWN BY: J.S.	DATE DRAWN: 08-01-14
SCALE: 1" = 1000'	REVISED: 07-30-15 K.B.

**MULTI-WELL PLAN**

**FIGURE #5**

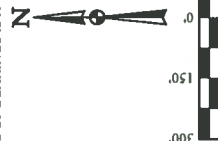


**UELS, LLC**  
Corporate Office • 85 South 200 East  
Vernal, UT 84078 • (435) 789-1017

# **BILL BARRETT CORPORATION** **ROAD RIGHT-OF-WAY ON** **STATE LANDS**

(FOR ANSCHUTZ STATE FED 5-62-27\_34  
 NENW PAD #5-62-27-0263B2, 0362C2,  
 0362B2 & 0461C2)

LOCATED IN  
 SECTION 27, T5N, R62W, 6th P.M.  
 WELD COUNTY, COLORADO  
 BASIS OF BEARINGS  
 BASIS OF BEARINGS IS A G.P.S. OBSERVATION



## **RIGHT-OF-WAY LENGTHS**

PROPERTY OWNER	FEET	ACRES	RODS
STATE OF COLORADO	76.47	0.088	4.63

BEGINNING OF ROAD STA. 0+00 BEARS S89°39'58"E  
 1652.41' FROM THE NORTHWEST CORNER OF SECTION  
 27, T5N, R62W, 6th P.M.

END OF ROAD STA. 0+76.47 BEARS S87°01'07"E  
 1655.27' FROM THE NORTHWEST CORNER OF SECTION  
 27, T5N, R62W, 6th P.M.



CERTIFICATE OF RECORDING  
 THIS IS TO CERTIFY THAT THE ABOVE DESCRIBED SURVEY WAS MADE BY THE SURVEYOR AND THAT THE SAME ARE TRUE AND CORRECT TO THE BEST OF HIS KNOWLEDGE AND BELIEF

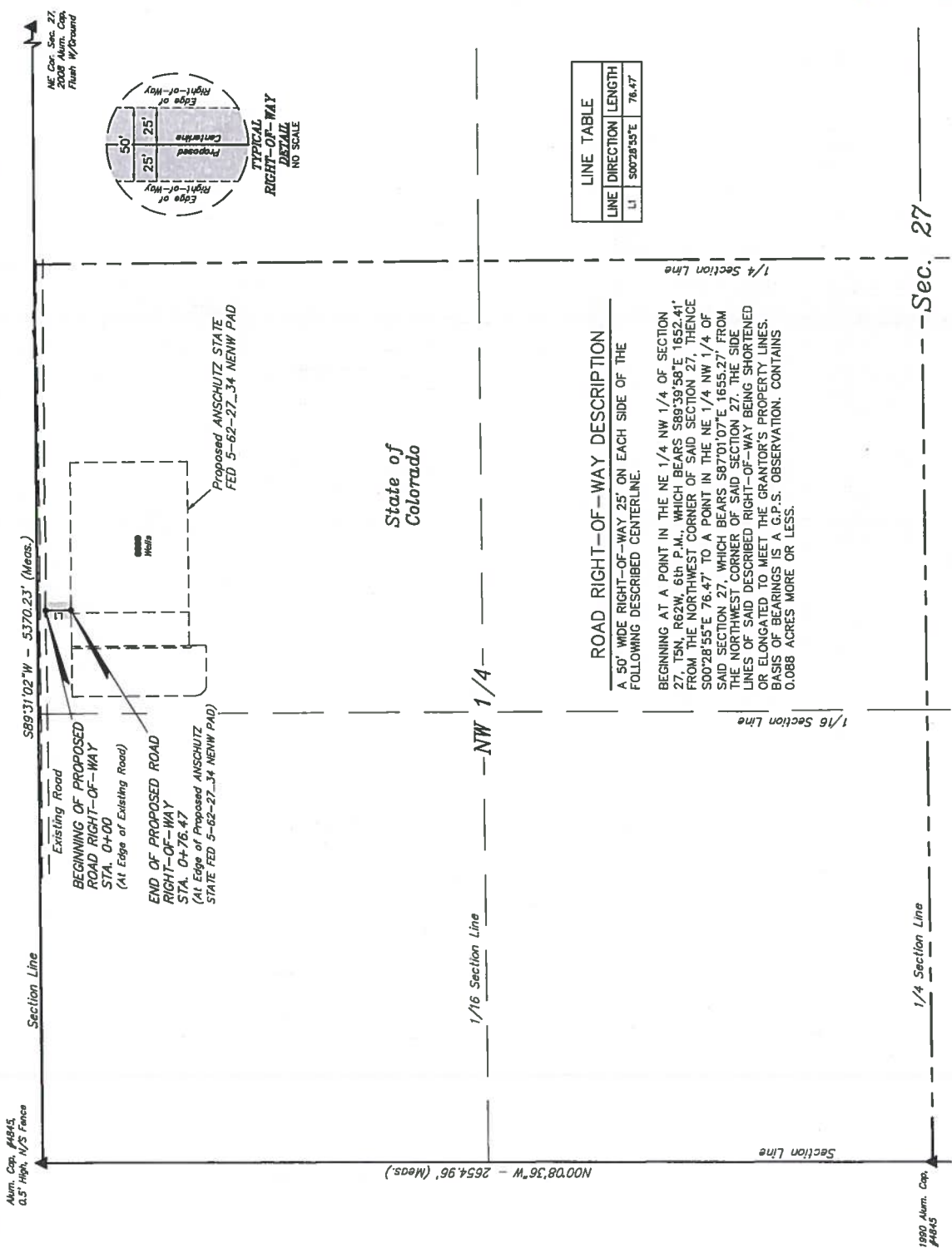


**JELS, LLC**  
 Corporate Office • 85 South 200 East  
 Vernal, UT 84078 • (435) 789-1017

SURVEYED BY: BRETT LOWREY, A.E.	DATE: 07-09-14
DRAWN BY: J.S.	DATE DRAWN: 08-01-14
SCALE: 1" = 300'	FILE: 5788 3
REVISOR: 07-30-15 K.B.	

## **LEGEND:**

▲ = SECTION CORNERS LOCATED.



LINE TABLE	
LINE	DIRECTION LENGTH
L1	S00°28'55"E 76.47'

## **ROAD RIGHT-OF-WAY DESCRIPTION**

A 50' WIDE RIGHT-OF-WAY 25' ON EACH SIDE OF THE  
 FOLLOWING DESCRIBED CENTERLINE.  
 BEGINNING AT A POINT IN THE NE 1/4 NW 1/4 OF SECTION  
 27, T5N, R62W, 6th P.M., WHICH BEARS S89°39'58"E 1652.41'  
 FROM THE NORTHWEST CORNER OF SAID SECTION 27, THENCE  
 S00°28'55"E 76.47' TO A POINT IN THE NE 1/4 NW 1/4 OF  
 SAID SECTION 27, WHICH BEARS S87°01'07"E 1655.27' FROM  
 THE NORTHWEST CORNER OF SAID SECTION 27. THE SIDE  
 LINES OF SAID DESCRIBED RIGHT-OF-WAY BEING SHORTENED  
 OR ELONGATED TO MEET THE GRANTOR'S PROPERTY LINES.  
 BASIS OF BEARINGS IS A G.P.S. OBSERVATION. CONTAINS  
 0.088 ACRES MORE OR LESS.

Sec. 27



PROCEED IN AN EASTERLY, THEN SOUTHEASTERLY DIRECTION FROM GREELEY, COLORADO ALONG US HIGHWAY 34 APPROXIMATELY 25.4 MILES TO THE JUNCTION OF THIS ROAD AND COUNTY ROAD 87 TO THE NORTH; TURN LEFT AND PROCEED IN A NORTHERLY, THEN EASTERLY DIRECTION APPROXIMATELY 3.0 MILES TO THE JUNCTION OF THIS ROAD AND COUNTY ROAD 89 TO THE NORTH; TURN LEFT AND PROCEED IN A NORTHERLY DIRECTION APPROXIMATELY 4.7 MILES TO JUNCTION OF THIS ROAD AND AN EXISTING ROAD TO THE WEST; TURN LEFT AND PROCEED IN A WESTERLY, THEN SOUTHWESTERLY DIRECTION APPROXIMATELY 5.3 MILES TO THE BEGINNING OF THE PROPOSED ACCESS ROAD TO THE SOUTH; FOLLOW ROAD FLAGS IN A SOUTHERLY DIRECTION APPROXIMATELY 76' TO THE PROPOSED LOCATION.

TOTAL DISTANCE FROM GREELEY, COLORADO TO THE PROPOSED LOCATION IS APPROXIMATELY 38.4 MILES.

**BILL BARRETT CORPORATION**

ANSCHUTZ STATE FED 5-62-27 34 NENW PAD  
#5-62-27-0263B2, 0362C2, 0362B2 & 0461C2  
NE 1/4 NW 1/4, SECTION 27, T5N, R62W, 6th P.M.  
WELD COUNTY, COLORADO

DRAWN BY: J.L.G.

DATE DRAWN: 09-27-14

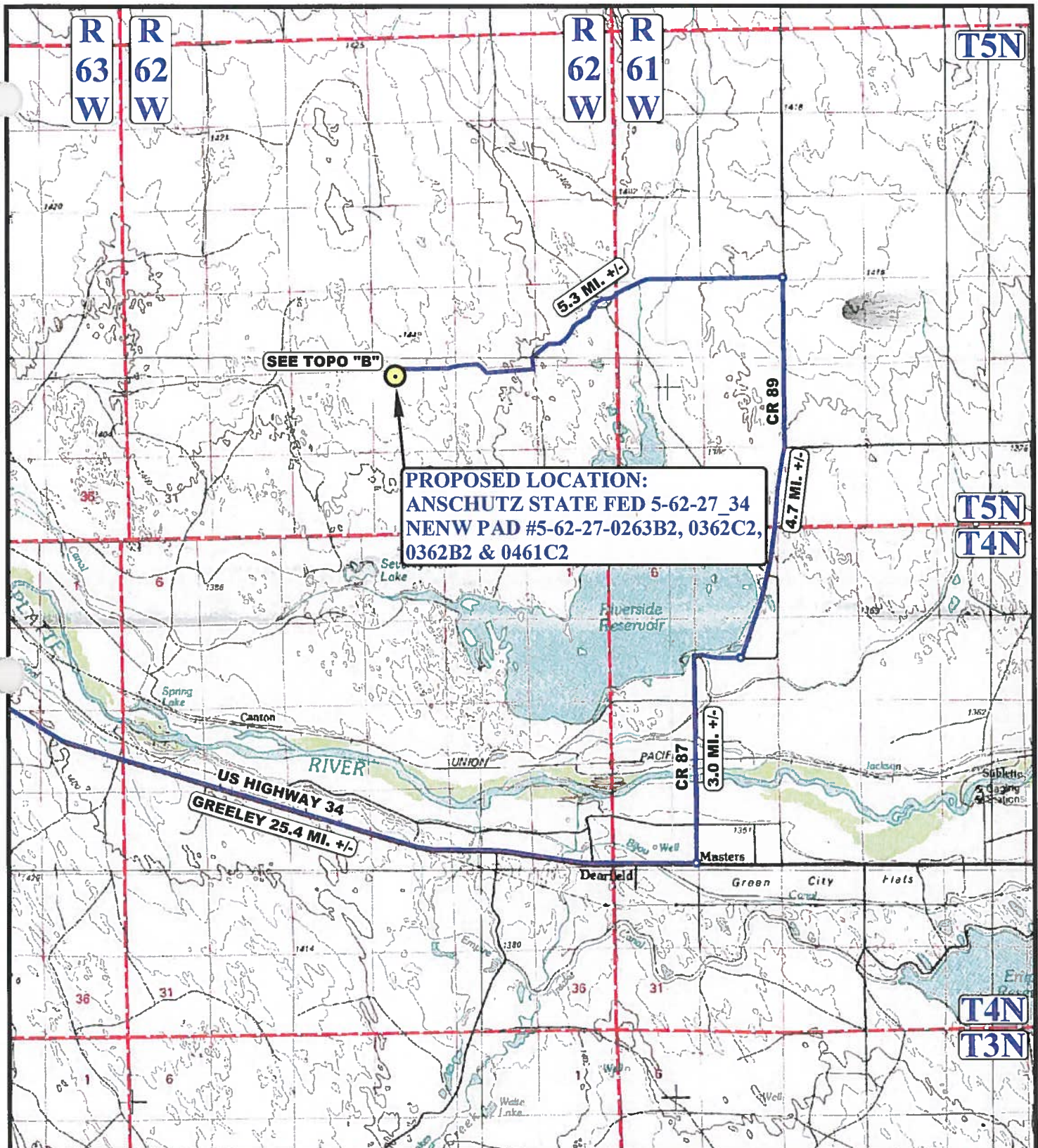
REV: 08-10-15

**ROAD DESCRIPTION**



**UELS, LLC**

Corporate Office \* 85 South 200 East  
Vernal, UT 84078 \* (435) 789-1017



**LEGEND:**

● PROPOSED LOCATION

**BILL BARRETT CORPORATION**

ANSCHUTZ STATE FED 5-62-27 34 NENW PAD  
#5-62-27-0263B2, 0362C2, 0362B2 & 0461C2  
NE 1/4 NW 1/4, SECTION 27, T5N, R62W, 6th P.M.  
WELD COUNTY, COLORADO

DRAWN BY: J.L.G.

DATE DRAWN: 09-27-14

SCALE: 1:100,000

REV: 08-10-15

**ACCESS ROAD MAP**

**TOPO A**



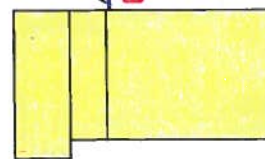
**UELS, LLC**  
Corporate Office \* 85 South 200 East  
Vernal, UT 84078 \* (435) 789-1017





R  
62  
W

PROPOSED ACCESS  
ROAD 76' +/-



DETAIL "A"

**PROPOSED LOCATION:**  
**ANSCHUTZ STATE FED 5-62-27\_34**  
**NENW PAD #5-62-27-0263B2, 0362C2,**  
**0362B2 & 0461C2**

SEE DETAIL "A"

GREELEY 38.4 MI. +/-

STATE  
OF  
COLORADO

AS SURVEYED SECTION LINES

T5N

NOTE: PARCEL DATA SHOWN HAS BEEN OBTAINED FROM VARIOUS SOURCES AND SHOULD BE USED FOR MAPPING, GRAPHIC AND PLANNING PURPOSES ONLY. NO WARRANTY IS MADE BY UINTAH ENGINEERING AND LAND SURVEYING (UELS) FOR ACCURACY OF THE PARCEL DATA.

**LEGEND:**

- EXISTING ROAD
- - - PROPOSED ROAD
- 18" CULVERT REQUIRED

**BILL BARRETT CORPORATION**

**ANSCHUTZ STATE FED 5-62-27\_34 NENW PAD**  
**#5-62-27-0263B2, 0362C2, 0362B2 & 0461C2**  
**NE 1/4 NW 1/4, SECTION 27, T5N, R62W, 6th P.M.**  
**WELD COUNTY, COLORADO**

DRAWN BY: J.L.G.

DATE DRAWN: 09-27-14

SCALE: 1"=2000'

REV: 08-10-15

**ACCESS ROAD MAP**

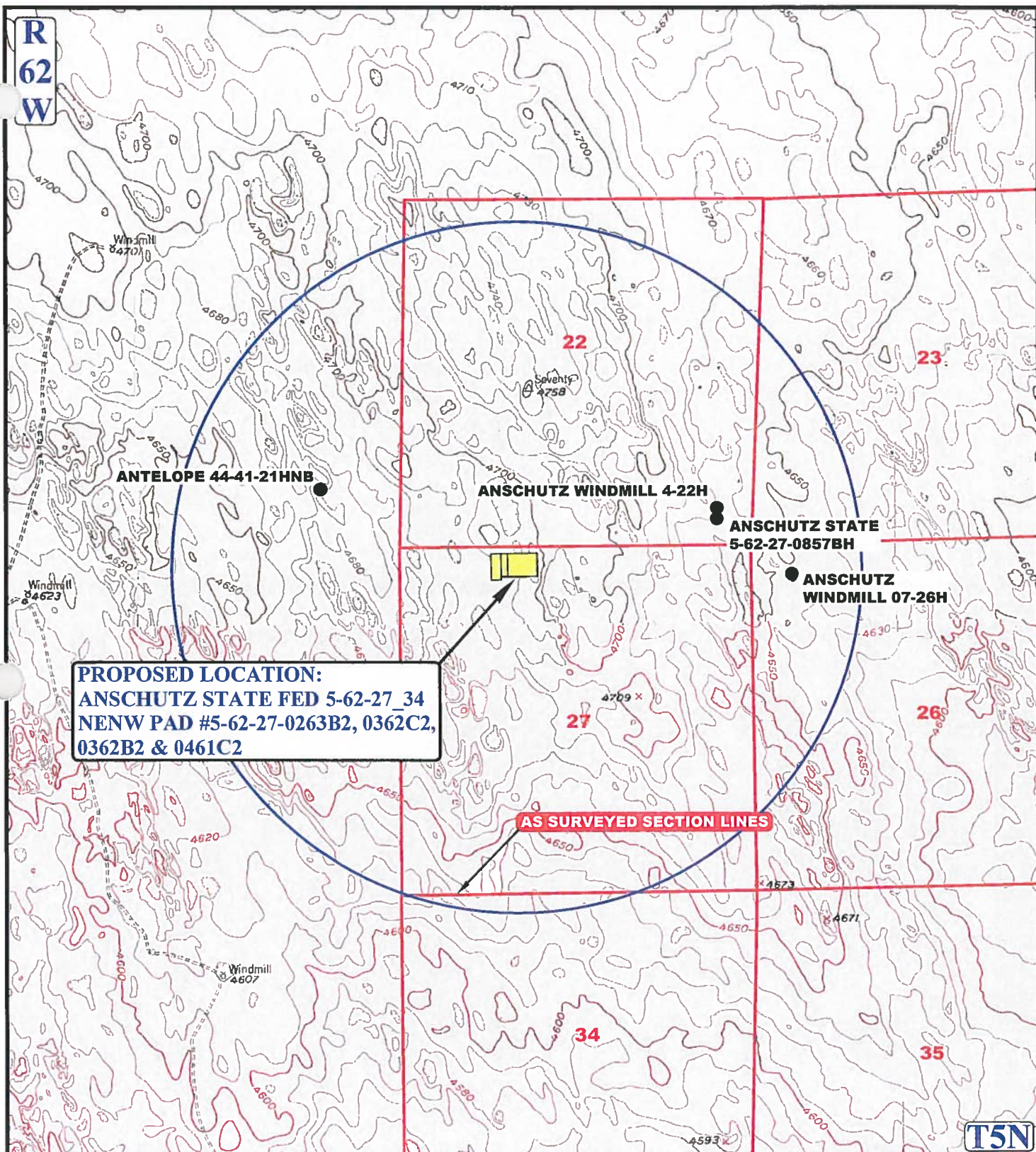
**TOPO B**



**UELS, LLC**  
Corporate Office \* 85 South 200 East  
Vernal, UT 84078 \* (435) 789-1017



R  
62  
W



**PROPOSED LOCATION:**  
ANSCHUTZ STATE FED 5-62-27\_34  
NENW PAD #5-62-27-0263B2, 0362C2,  
0362B2 & 0461C2

AS SURVEYED SECTION LINES

**LEGEND:**

- Ø DISPOSAL WELLS
- PRODUCING WELLS
- SHUT IN WELLS
- ABANDONED WELLS
- TEMPORARILY ABANDONED

**BILL BARRETT CORPORATION**

ANSCHUTZ STATE FED 5-62-27\_34 NENW PAD  
#5-62-27-0263B2, 0362C2, 0362B2 & 0461C2  
NE 1/4 NW 1/4, SECTION 27, T5N, R62W, 6th P.M.  
WELD COUNTY, COLORADO

DRAWN BY: J.L.G.

DATE DRAWN: 09-27-14

SCALE: 1 = 2000'

REV: 08-10-15

**WELL PROXIMITY MAP**

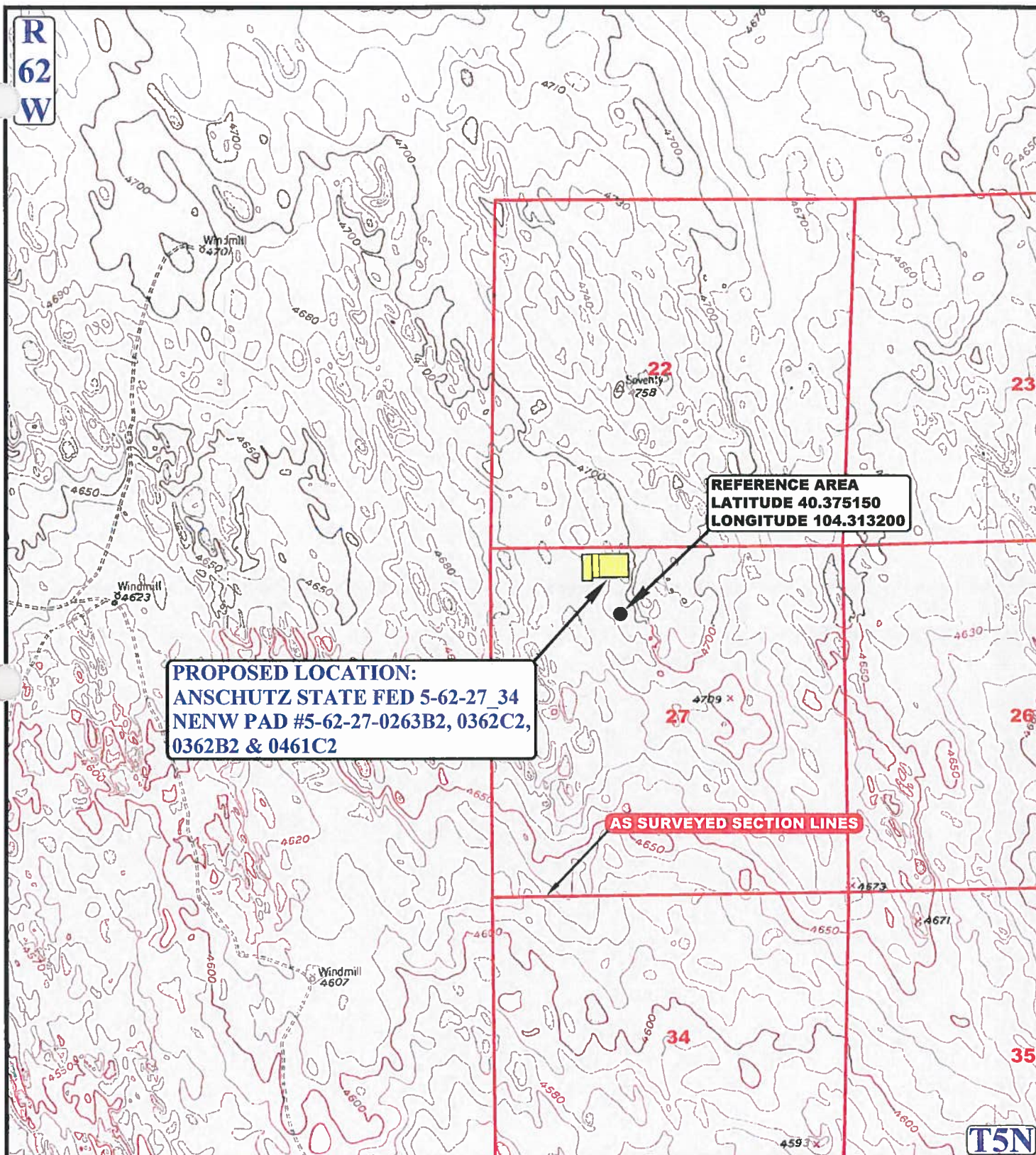
**TOPO C**



**UELS, LLC**  
Corporate Office \* 85 South 200 East  
Vernal, UT 84078 \* (435) 789-1017



R  
62  
W



**PROPOSED LOCATION:**  
ANSCHUTZ STATE FED 5-62-27 34  
NENW PAD #5-62-27-0263B2, 0362C2,  
0362B2 & 0461C2

**REFERENCE AREA**  
LATITUDE 40.375150  
LONGITUDE 104.313200

**AS SURVEYED SECTION LINES**

**LEGEND:**

**BILL BARRETT CORPORATION**

ANSCHUTZ STATE FED 5-62-27 34 NENW PAD  
#5-62-27-0263B2, 0362C2, 0362B2 & 0461C2  
NE 1/4 NW 1/4, SECTION 27, T5N, R62W, 6th P.M.  
WELD COUNTY, COLORADO

DRAWN BY: J.L.G.

DATE DRAWN: 09-27-14

SCALE: 1" = 2000'

REV: 08-10-15

**REFERENCE AREA MAP**

**REF TOPO**



**UELS, LLC**  
Corporate Office \* 85 South 200 East  
Vernal, UT 84078 \* (435) 789-1017







**PHOTO: VIEW OF REFERENCE AREA**

**CAMERA ANGLE: NORTHERLY**



**PHOTO: VIEW OF REFERENCE AREA**

**CAMERA ANGLE: EASTERLY**

**BILL BARRETT CORPORATION**

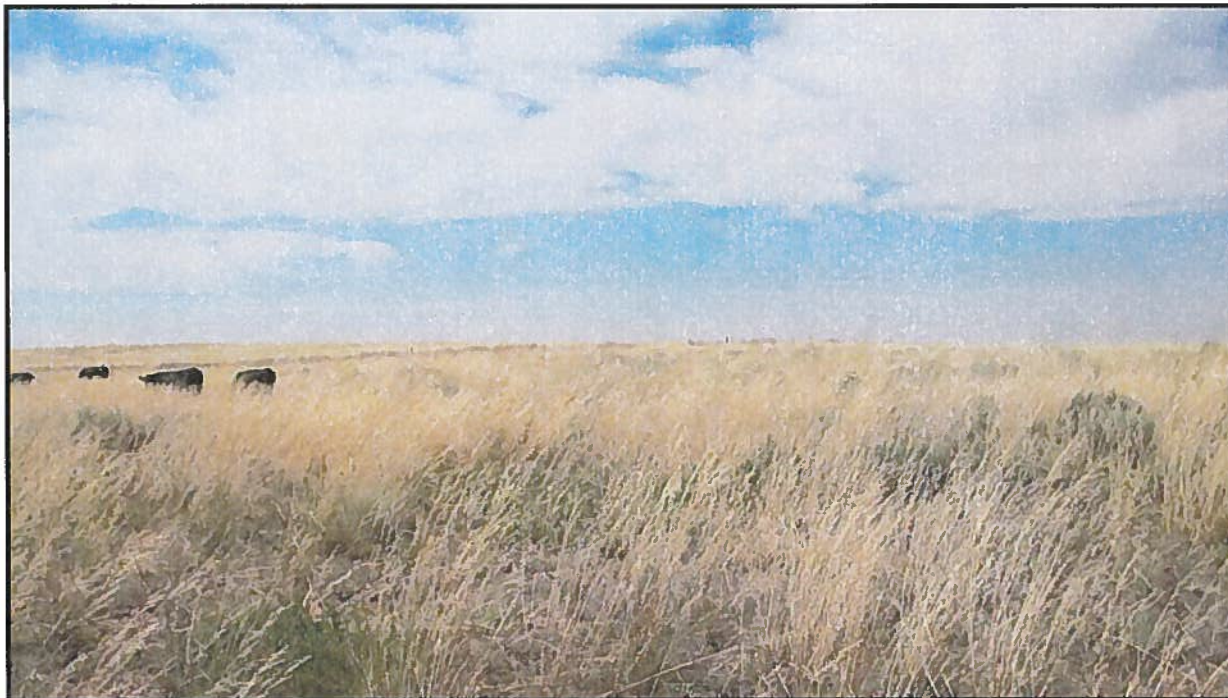
**ANSCHUTZ STATE FED 5-62-27 34 NENW PAD  
#5-62-27-0263B2, 0362C2, 0362B2 & 0461C2  
NE 1/4 NW 1/4, SECTION 27, T5N, R62W, 6th P.M.  
WELD COUNTY, COLORADO**

DRAWN BY: J.L.G.	DATE DRAWN: 09-27-14
TAKEN BY: B.L.	REV: 08-10-15
<b>REFERENCE AREA PHOTOS</b>	<b>REF 1</b>



**UELS, LLC**  
Corporate Office \* 85 South 200 East  
Vernal, UT 84078 \* (435) 789-1017





**PHOTO: VIEW OF REFERENCE AREA**

**CAMERA ANGLE: SOUTHERLY**



**PHOTO: VIEW OF REFERENCE AREA**

**CAMERA ANGLE: WESTERLY**

**BILL BARRETT CORPORATION**

**ANSCHUTZ STATE FED 5-62-27 34 NENW PAD  
#5-62-27-0263B2, 0362C2, 0362B2 & 0461C2  
NE 1/4 NW 1/4, SECTION 27, T5N, R62W, 6th P.M.  
WELD COUNTY, COLORADO**



**UELS, LLC**  
Corporate Office \* 85 South 200 East  
Vernal, UT 84078 \* (435) 789-1017

DRAWN BY: J.L.G.	DATE DRAWN: 09-27-14
TAKEN BY: B.L.	REV: 08-10-15
<b>REFERENCE AREA PHOTOS</b>	<b>REF 2</b>



# Bill Barrett Corporation

November 5, 2015

Colorado State Land Board  
Attention: Pete Milonas  
1127 Sherman Street, Suite 300  
Denver, CO 80203

RE: Surface Location Exception Waiver  
Rule 318A.a and Rule 318A.c  
Anschutz State 5-62-27\_34 NENW Well Pad (SHL: NENW, Sec 27, T5N-R62W)  
Weld County, Colorado

Dear Mr. Milonas:

Bill Barrett Corporation ("BBC") is planning to drill the wells on Exhibit A from the above mentioned well pads. Rule 318A.a of the Colorado Oil and Gas Conservation Commission's ("COGCC") rules and regulations requires that each well be drilled within a square four hundred (400) feet in length, the center of which is the center of any quarter/quarter section, or a square with sides eight hundred (800) feet in length, the center of which is the center of any quarter section (the "GWA Windows"). The surface location of BBC's proposed well(s) has been staked outside of the 318A.a GWA Windows and therefore a waiver is needed to satisfy this requirement.

In addition, Rule 318A.c requires that new well locations be "twinned" (located within 50 feet) of an existing well, when such wells exist.

By signing this Surface Location Exception, you hereby waive requirements to comply with COGCC Rule 318A.a and Rule 318A.c where applicable, for wells within the surface locations described above. If you have any questions, please contact me at 303-312-8745 or via email at [jmihalcin@billbarrettcorp.com](mailto:jmihalcin@billbarrettcorp.com).

Sincerely,  
BILL BARRETT CORPORATION



Justin Mihalcin  
Landman



## Bill Barrett Corporation

### Rule 318A.a and Rule 318A.c Surface Location Exception Waiver

I hereby waive the above requirement for all wells on the above described well pad surface locations effective the date executed below.

#### Colorado State Land Board

By: Steve McDonald

Title: Minerals Director

Date: 11.10.15





Exhibit A

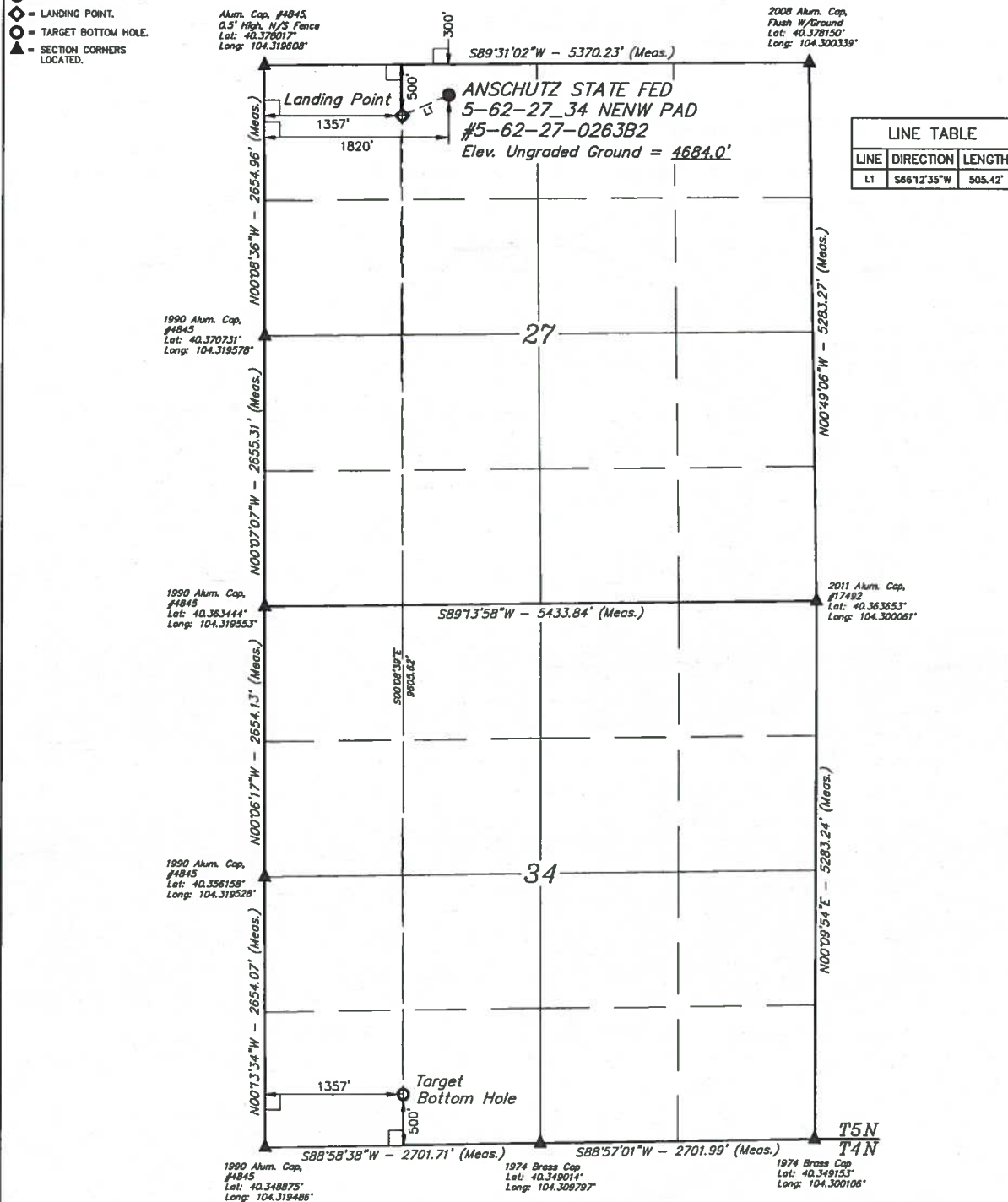
Anschutz State 5-62-27_34 NENW Well Pad	
Anschutz State Fed 5-62-27-0263B2	SHL: NENW, Section 27, T5N-R62W
Anschutz State Fed 5-62-27-0362C2	SHL: NENW, Section 27, T5N-R62W
Anschutz State Fed 5-62-27-0362B2	SHL: NENW, Section 27, T5N-R62W
Anschutz State Fed 5-62-27-0461C2	SHL: NENW, Section 27, T5N-R62W

Note: Well names subject to change. Surface Owner consent based on wells within the surface locations, as described, not specific well names.

# LEGEND:

- 90° SYMBOL
- PROPOSED WELLHEAD
- ◆ LANDING POINT
- TARGET BOTTOM HOLE
- ▲ SECTION CORNERS LOCATED

T5N, R62W, 6th P.M.



NAD 83 (TARGET BOTTOM HOLE)	NAD 83 (LANDING POINT)	NAD 83 (SURFACE LOCATION)
LATITUDE = 40°21'01.14" (40.350317)	LATITUDE = 40°22'36.04" (40.376678)	LATITUDE = 40°22'38.06" (40.377239)
LONGITUDE = 104°18'52.66" (104.314628)	LONGITUDE = 104°18'53.04" (104.314733)	LONGITUDE = 104°18'47.07" (104.313075)
NAD 27 (TARGET BOTTOM HOLE)	NAD 27 (LANDING POINT)	NAD 27 (SURFACE LOCATION)
LATITUDE = 40°21'01.21" (40.350336)	LATITUDE = 40°22'36.11" (40.376697)	LATITUDE = 40°22'38.12" (40.377256)
LONGITUDE = 104°18'50.83" (104.314119)	LONGITUDE = 104°18'51.22" (104.314228)	LONGITUDE = 104°18'45.24" (104.312567)
STATE PLANE NAD 83 (CO. NORTH)	STATE PLANE NAD 83 (CO. NORTH)	STATE PLANE NAD 83 (CO. NORTH)
N: 1372669.44 E: 3330370.89	N: 1382271.24 E: 3330212.62	N: 1382481.51 E: 3330672.08
STATE PLANE NAD 27 (CO. NORTH)	STATE PLANE NAD 27 (CO. NORTH)	STATE PLANE NAD 27 (CO. NORTH)
N: 372671.49 E: 2330520.98	N: 382273.05 E: 2330362.62	N: 382483.31 E: 2330622.08

**BASIS OF BEARINGS**  
BASIS OF BEARINGS IS A G.P.S. OBSERVATION

**BASIS OF ELEVATION**  
SPOT ELEVATION LOCATED AT THE NORTHEAST CORNER OF SECTION 24, T5N, R62W, 6th P.M. TAKEN FROM THE POINT OF ROCKS, QUADRANGLE, COLORADO, WELD COUNTY, 7.5 MINUTE QUAD (TOPOGRAPHIC MAP) PUBLISHED BY THE UNITED STATES DEPARTMENT OF THE INTERIOR, GEOLOGICAL SURVEY. SAID ELEVATION IS MARKED AS BEING 4539 FEET.

CERTIFICATE OF REGISTRATION  
THIS IS TO CERTIFY THAT THE ABOVE-NAMED SURVEYOR HAS BEEN REGISTERED IN THE STATE OF COLORADO UNDER MY SUPERVISION AND THAT THE SAME ARE TRUE AND CORRECT TO THE BEST OF MY KNOWLEDGE AND BELIEF.

REGISTERED LAND SURVEYOR  
REGISTRATION NO. 28285  
STATE OF COLORADO  
JULY 15, 2015

**BILL BARRETT CORPORATION**

ANSHUTZ STATE FED 5-62-27\_34 NENW PAD  
#5-62-27-0263B2  
NE 1/4 NW 1/4, SECTION 27, T5N, R62W, 6th P.M.  
WELD COUNTY, COLORADO

SURVEYED BY: BRETT LOWREY, A.E. DATE: 07-09-14  
DRAWN BY: J.S. DATE DRAWN: 08-01-14  
SCALE: 1" = 1000' REVISED: 07-30-15 K.B.

**WELL LOCATION PLAT**



**UELS, LLC**  
Corporate Office • 85 South 200 East  
Vernal, UT 84078 • (435) 789-1017



# LEGEND:

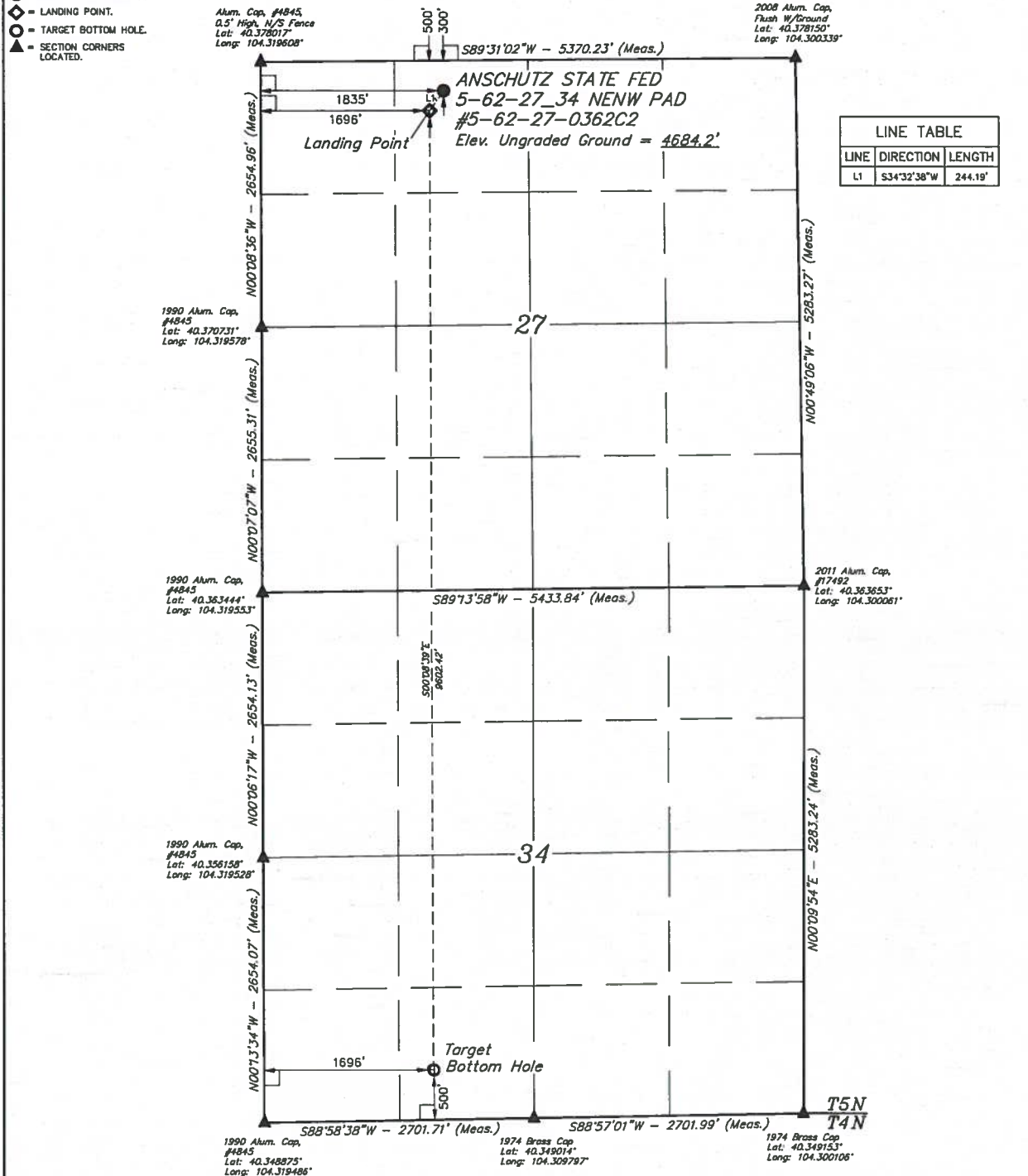
- 90° SYMBOL
- PROPOSED WELLHEAD
- LANDING POINT
- TARGET BOTTOM HOLE
- SECTION CORNERS LOCATED

T5N, R62W, 6th P.M.

Alum. Cap. #4845  
0.5' High N/S Fence  
Lat: 40.378017°  
Long: 104.319608°

2008 Alum. Cap.  
Flush W/Ground  
Lat: 40.378150°  
Long: 104.300339°

LINE TABLE		
LINE	DIRECTION	LENGTH
L1	S34°32'38"W	244.19'



PDOP = 1.4

NAD 83 (TARGET BOTTOM HOLE)	NAD 83 (LANDING POINT)	NAD 83 (SURFACE LOCATION)
LATITUDE = 40°21'01.20" (40 350333)	LATITUDE = 40°22'36.07" (40 376686)	LATITUDE = 40°22'38.06" (40 377239)
LONGITUDE = 104°18'48.28" (104 313411)	LONGITUDE = 104°18'48.66" (104 313517)	LONGITUDE = 104°18'46.88" (104 313022)
NAD 27 (TARGET BOTTOM HOLE)	NAD 27 (LANDING POINT)	NAD 27 (SURFACE LOCATION)
LATITUDE = 40°21'01.27" (40 350353)	LATITUDE = 40°22'36.14" (40 376706)	LATITUDE = 40°22'38.13" (40 377258)
LONGITUDE = 104°18'46.45" (104 312903)	LONGITUDE = 104°18'46.84" (104 313011)	LONGITUDE = 104°18'45.05" (104 312514)
STATE PLANE NAD 83 (CO. NORTH)	STATE PLANE NAD 83 (CO. NORTH)	STATE PLANE NAD 83 (CO. NORTH)
N: 1372680.22 E: 3330709.66	N: 1382378.83 E: 3330551.45	N: 1382481.83 E: 3330687.06
STATE PLANE NAD 27 (CO. NORTH)	STATE PLANE NAD 27 (CO. NORTH)	STATE PLANE NAD 27 (CO. NORTH)
N: 372682.27 E: 2330859.75	N: 382280.64 E: 2330701.45	N: 382483.63 E: 2330837.06

**BASIS OF BEARINGS**  
BASIS OF BEARINGS IS A G.P.S. OBSERVATION  
**BASIS OF ELEVATION**  
SPOT ELEVATION LOCATED AT THE NORTHEAST CORNER OF SECTION 24, T5N, R62W, 6th P.M. TAKEN FROM THE POINT OF ROCKS, QUADRANGLE, COLORADO, WELD COUNTY, 7.5 MINUTE QUAD (TOPOGRAPHIC MAP) PUBLISHED BY THE UNITED STATES DEPARTMENT OF THE INTERIOR, GEOLOGICAL SURVEY. SAID ELEVATION IS MARKED AS BEING 4530 FEET.



**UELLS, LLC**  
Corporate Office • 85 South 200 East  
Vernal, UT 84078 • (435) 789-1017



CERTIFICATE  
THIS IS TO CERTIFY THAT THE ABOVE IS A TRUE AND CORRECT COPY OF THE NOTES OF ACTUAL SURVEYS MADE BY ME UNDER MY SUPERVISION AND THAT THE SAME ARE TRUE AND CORRECT TO THE BEST OF MY KNOWLEDGE AND BELIEF.

REGISTERED LAND SURVEYOR  
REGISTRATION NO. 28283  
STATE OF COLORADO  
JUL 20 2015

**BILL BARRETT CORPORATION**  
ANSCHUTZ STATE FED 5-62-27 34 NENW PAD  
#5-62-27-0362C2  
NE 1/4 NW 1/4, SECTION 27, T5N, R62W, 6th P.M.  
WELD COUNTY, COLORADO

SURVEYED BY: BRETT LOWREY, A.F.	DATE: 07-09-14
DRAWN BY: J.S.	DATE DRAWN: 08-01-14
SCALE: 1" = 1000'	REVISED: 07-30-15 K.B.

**WELL LOCATION PLAT**



# LEGEND:

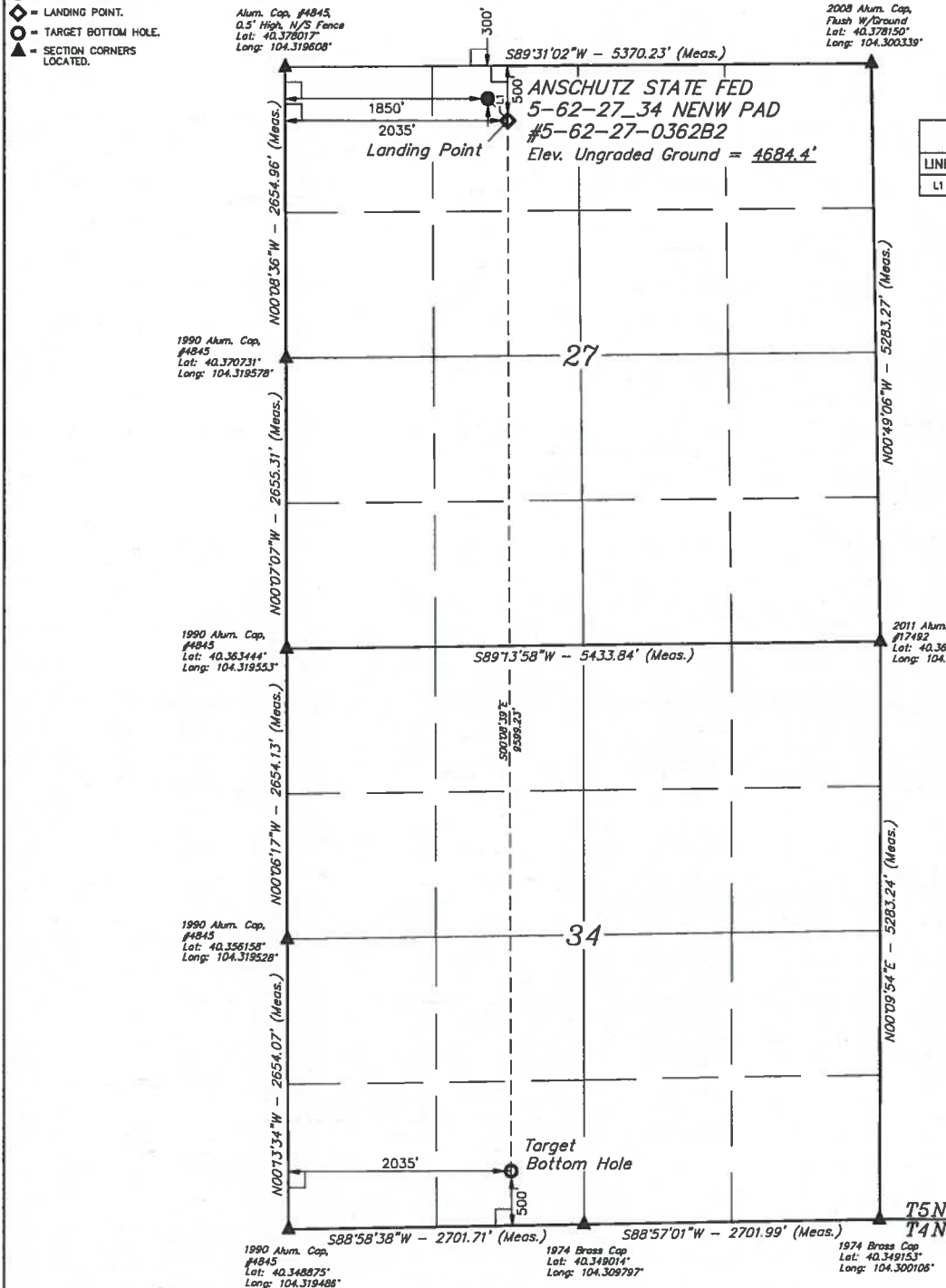
- = 90° SYMBOL
- = PROPOSED WELLHEAD
- ◆ = LANDING POINT
- = TARGET BOTTOM HOLE
- ▲ = SECTION CORNERS LOCATED

T5N, R62W, 6th P.M.

Alum. Cap. #4845  
0.5' High, N/S Fence  
Lat: 40.378017°  
Long: 104.319508°

2008 Alum. Cap.  
Flush W/Ground  
Lat: 40.378150°  
Long: 104.300339°

LINE TABLE		
LINE	DIRECTION	LENGTH
L1	S43°04'21"E	271.63'



PDOP = 1.6

NAD 83 (TARGET BOTTOM HOLE)	NAD 83 (LANDING POINT)	NAD 83 (SURFACE LOCATION)
LATITUDE = 40°21'01.27" (40 350353)	LATITUDE = 40°22'36.10" (40 376694)	LATITUDE = 40°22'38.06" (40 377239)
LONGITUDE = 104°18'43.90" (104 312194)	LONGITUDE = 104°18'44.28" (104 312300)	LONGITUDE = 104°18'46.68" (104 312967)
NAD 27 (TARGET BOTTOM HOLE)	NAD 27 (LANDING POINT)	NAD 27 (SURFACE LOCATION)
LATITUDE = 40°21'01.33" (40 350369)	LATITUDE = 40°22'36.17" (40 376714)	LATITUDE = 40°22'38.13" (40 377258)
LONGITUDE = 104°18'42.07" (104 311686)	LONGITUDE = 104°18'42.46" (104 311794)	LONGITUDE = 104°18'44.86" (104 312461)
STATE PLANE NAD 83 (CO. NORTH)	STATE PLANE NAD 83 (CO. NORTH)	STATE PLANE NAD 83 (CO. NORTH)
N: 1372691.00 E: 3331048.43	N: 1382286.42 E: 3330890.28	N: 1382482.18 E: 3330702.07
STATE PLANE NAD 27 (CO. NORTH)	STATE PLANE NAD 27 (CO. NORTH)	STATE PLANE NAD 27 (CO. NORTH)
N: 372691.05 E: 2331198.52	N: 382288.22 E: 2331040.28	N: 382483.98 E: 2330852.08

**BASIS OF BEARINGS**  
BASIS OF BEARINGS IS A GPS OBSERVATION  
**BASIS OF ELEVATION**  
SPOT ELEVATION LOCATED AT THE NORTHEAST CORNER OF SECTION 24, T5N, R62W, 6th P.M. TAKEN FROM THE POINT OF ROCKS, QUADRANGLE, COLORADO, WELD COUNTY, 7.5 MINUTE QUAD (TOPOGRAPHIC MAP) PUBLISHED BY THE UNITED STATES DEPARTMENT OF THE INTERIOR, GEOLOGICAL SURVEY. SAID ELEVATION IS MARKED AS BEING 4330 FEET.



**UELLS, LLC**  
Corporate Office • 85 South 200 East  
Vernal, UT 84078 • (435) 789-1017



**CERTIFICATE**  
THIS IS TO CERTIFY THAT THE ABOVE SAID MAP WAS PREPARED BY ME OR UNDER MY SUPERVISION AND THAT THE SAME ARE TRUE AND CORRECT TO THE BEST OF MY KNOWLEDGE AND BELIEF.  
*[Signature]*  
REGISTERED LAND SURVEYOR  
REGISTRATION NO. 28281  
STATE OF COLORADO  
07-30-15

**BILL BARRETT CORPORATION**  
ANSCHUTZ STATE FED 5-62-27 34 NENW PAD  
#5-62-27-0362B2  
NE 1/4 NW 1/4, SECTION 27, T5N, R62W, 6th P.M.  
WELD COUNTY, COLORADO

SURVEYED BY: BRETT LOWREY, A.F.	DATE: 07-09-14
DRAWN BY: J.S.	DATE DRAWN: 08-01-14
SCALE: 1" = 1000'	REVISED: 07-30-15 K.B.

**WELL LOCATION PLAT**

# LEGEND:

- 90° SYMBOL
- PROPOSED WELLHEAD
- ◆ LANDING POINT
- TARGET BOTTOM HOLE
- ▲ SECTION CORNERS LOCATED

T5N, R62W, 6th P.M.

Alum. Cap. #4845  
0.5' High, N/S Fence  
Lat: 40.37017°  
Long: 104.319608°

2008 Alum. Cap.  
Flush w/ Ground  
Lat: 40.370150°  
Long: 104.300339°

1990 Alum. Cap.  
#4845  
Lat: 40.370731°  
Long: 104.319578°

1990 Alum. Cap.  
#4845  
Lat: 40.363444°  
Long: 104.319533°

1990 Alum. Cap.  
#4845  
Lat: 40.356158°  
Long: 104.319528°

1990 Alum. Cap.  
#4845  
Lat: 40.348875°  
Long: 104.319486°

1974 Brass Cap  
Lat: 40.349014°  
Long: 104.309797°

1974 Brass Cap  
Lat: 40.349153°  
Long: 104.300106°

LINE TABLE		
LINE	DIRECTION	LENGTH
L1	S68°59'22"E	545.78'

PDOP = 1.4

NAD 83 (TARGET BOTTOM HOLE)	NAD 83 (LANDING POINT)	NAD 83 (SURFACE LOCATION)
LATITUDE = 40°21'01.33" (40.350369)	LATITUDE = 40°22'36.13" (40.376703)	LATITUDE = 40°22'38.06" (40.377239)
LONGITUDE = 104°18'39.52" (104.310978)	LONGITUDE = 104°18'39.90" (104.311083)	LONGITUDE = 104°18'46.49" (104.312914)
NAD 27 (TARGET BOTTOM HOLE)	NAD 27 (LANDING POINT)	NAD 27 (SURFACE LOCATION)
LATITUDE = 40°21'01.39" (40.350386)	LATITUDE = 40°22'36.20" (40.376722)	LATITUDE = 40°22'38.13" (40.377258)
LONGITUDE = 104°18'37.70" (104.310472)	LONGITUDE = 104°18'38.08" (104.310578)	LONGITUDE = 104°18'44.66" (104.312406)
STATE PLANE NAD 83 (CO. NORTH)	STATE PLANE NAD 83 (CO. NORTH)	STATE PLANE NAD 83 (CO. NORTH)
N: 1372701.78 E: 3331387.21	N: 1382294.01 E: 3331229.11	N: 1382482.51 E: 3330717.07
STATE PLANE NAD 27 (CO. NORTH)	STATE PLANE NAD 27 (CO. NORTH)	STATE PLANE NAD 27 (CO. NORTH)
N: 372703.84 E: 2331537.30	N: 382295.81 E: 2331379.12	N: 382484.31 E: 233067.07

**BASIS OF BEARINGS**  
BASIS OF BEARINGS IS A G.P.S. OBSERVATION  
**BASIS OF ELEVATION**  
SPOT ELEVATION LOCATED AT THE NORTHEAST CORNER OF SECTION 24, T5N, R62W, 6th P.M.  
TAKEN FROM THE POINT OF ROCKS, QUADRANGLE, COLORADO, WELD COUNTY, 7.5 MINUTE  
QUAD (TOPOGRAPHIC MAP) PUBLISHED BY THE UNITED STATES DEPARTMENT OF THE  
INTERIOR, GEOLOGICAL SURVEY. SAID ELEVATION IS MARKED AS BEING 4550 FEET



UELS, LLC  
Corporate Office \* 85 South 200 East  
Vernal, UT 84078 \* (435) 789-1017



CERTIFICATE  
THIS IS TO CERTIFY THAT THE ABOVE IS A TRUE AND CORRECT COPY OF THE  
NOTES OF ACTUAL SURVEYS MADE BY ME UNDER MY SUPERVISION  
AND THAT THE SAME ARE TRUE AND CORRECT TO THE BEST OF MY  
KNOWLEDGE AND BELIEF.  
REGISTERED LAND SURVEYOR  
RECEIVED JAN. NO. 2021  
STATE OF COLORADO  
15

**BILL BARRETT CORPORATION**  
ANSCHUTZ STATE FED 5-62-27 34 NENW PAD  
#5-62-27-0461C2  
NE 1/4 NW 1/4, SECTION 27, T5N, R62W, 6th P.M.  
WELD COUNTY, COLORADO

SURVEYED BY: BRETT LOWREY, A.F.	DATE: 07-09-14
DRAWN BY: J.S.	DATE DRAWN: 08-01-14
SCALE: 1" = 1000'	REVISED: 07-30-15 K.B.

**WELL LOCATION PLAT**

## Fee/Fee/Federal Well Landowner Authorization Form

In accordance with Washington Office Instruction Memorandum (IM) 2009-78 dated February 20, 2009, entitled "Processing Oil and Gas Applications for Permit to Drill for Directional Drilling into Federal Mineral Estate from Multiple-Well Pads on Non-Federal Surface and Mineral Estate Locations".

The following guidance within the IM is used by the Royal Gorge Field Office in determining completeness of an Application for Permit to Drill (APD).

*As a condition of approval of an APD... the operator must provide the BLM a true and complete copy of a document in which the owner of the surface or that owner's representative authorizes the operator to drill a Federal well from the non-Federal lands, and in which the surface owner or representative guarantees the Department of the Interior (Department), including BLM, access to the non-Federal lands to perform all necessary surveys and inspections. If access for any bureau of the Department to the operations and surrounding area for official business related to the approved operations is denied or impeded in any way, the BLM may order the federally approved operations halted and the Federal well or wells shut in.*

I Pete Milongas, as the surface owner or surface owner's representative, authorize Bill Barrett Corporation (operator), to drill a Federal well from my private surface estate, and guarantee the BLM access to the Federal well on my private surface estate to perform all necessary surveys and inspections pertaining to the Federal well, until well is deemed plugged and abandoned.

Surface Owner Name: State Board of Land Commissioners

Surface Owner Address: 1127 Sherman Street, # 300  
Denver, CO 80203

Surface Owner Phone Number(s): 303-866-3454 ext. 3324

Signature: Pete Milongas Date: 11-10-15

Well Pad for Authorization:  
Anschutz State 5-62-27\_34 NENW Well Pad





**Bill Barrett Corporation**

November 10, 2015

State of Colorado – Acting through Colorado State Board of Land Commissioners  
Attn: Steve Freese and Pete Milonas  
1127 Sherman St.  
Denver, Colorado 80203

Re: Letter Agreement  
State Surface Use Agreement and Window and Twinning Waivers  
Township 5 North, Range 62 West, 6<sup>th</sup> P.M.  
Section 22 and 27 Surface  
Weld County, Colorado

Dear Mr. Pete Milonas-

Pursuant to conversations with Steve Freese and yourself, Bill Barrett Corporation ("BBC") has plans to drill fifteen (15) wells located on three (3) separate surface pads located in Section 22 of Township 5 North, Range 62 West, 6<sup>th</sup> P.M. and one (1) surface pad located in Section 27 of Township 5 North, Range 62 West, 6<sup>th</sup> P.M.

The State of Colorado owns the surface of the aforementioned locations and in order to complete the permitting process BBC requires the State to waive the provisions of Rule 318.A.(a) and 318.A.(c) of the Colorado Oil and Gas Conservation Commissions Rules and Regulations. Due to the current proposal of a new state surface use agreement ("SUA") BBC has not acquired an agreement from the state for its surface pad locations.

The State of Colorado and BBC hereby agree to the following terms:

1. The State of Colorado will fully execute the Window and Twinning Waivers for the fifteen (15) wells located on State surface in Section 22 and 27 of Township 5 North, Range 62 West, 6<sup>th</sup> P.M.
2. Upon approval of the new State of Colorado SUA, BBC agrees to execute such agreement following State Land Board approval.

If you agree to the terms set forth in this letter, please indicate your acceptance by returning an executed copy in the space provided below. BBC respectfully requests your response to this letter and requests your execution of the enclosed waivers and its return at your earliest convenience.



**Bill Barrett Corporation**

If you would like to discuss this letter further or have any questions please contact me via email or phone anytime.

All the best,

BILL BARRETT CORPORATION

Justin Mihalcin



**Bill Barrett Corporation**

1099 18th Street | Suite 2300  
Denver, CO 80202  
303.312.8745  
jmihalcin@billbarrettcorp.com

State of Colorado – Acting through the Colorado State Land Board accepted and agreed to on this 16<sup>th</sup>  
day of November, 2015.

By: Pete Milonas

Title: Pete Milonas – Minerals Director