

Encana Interim Reclamation Submittal

Site Name: Lochbuie 31H-D165
Location ID#: 433796
Location: NWNW 31 1N 65W
Lat./Long: 40.01408/-104.71209

Associated Wells:
Lochbuie # 2A-31H D165 API# 05-123-37787
Lochbuie # 2B-31H D165 API# 05-123-37789
Lochbuie # 2C-31H D165 API# 05-123-37790
Lochbuie # 2D-31H D165 API# 05-123-37786
Lochbuie # 2E-31H D165 API# 05-123-37784
Lochbuie # 2F-31H D165 API# 05-123-37785
Lochbuie # 2G-31H D165 API# 05-123-37788
Lochbuie # 2H-31H D165 API# 05-123-38169



Facing west
40 0'50.33999"/-104 42'43.44000"



Facing south
40 0'506.099/-104 42'42.7499"



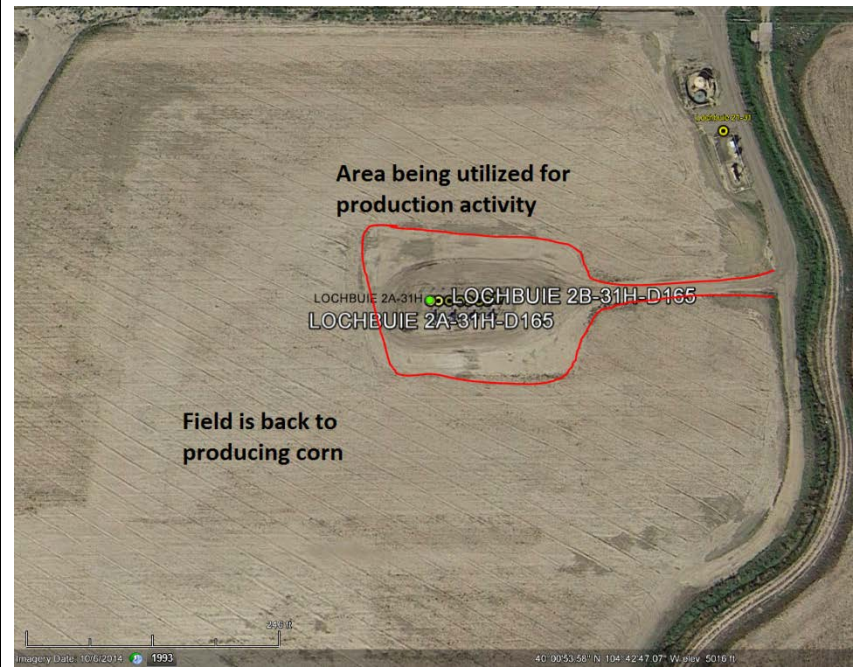
Facing east
40 0'50.723000"/-104 42'42.72999"



Facing north
40 0'50.92000"/-104 42'42.80999"



Original Disturbance Area - October 2013



Area reclaimed and area used for production