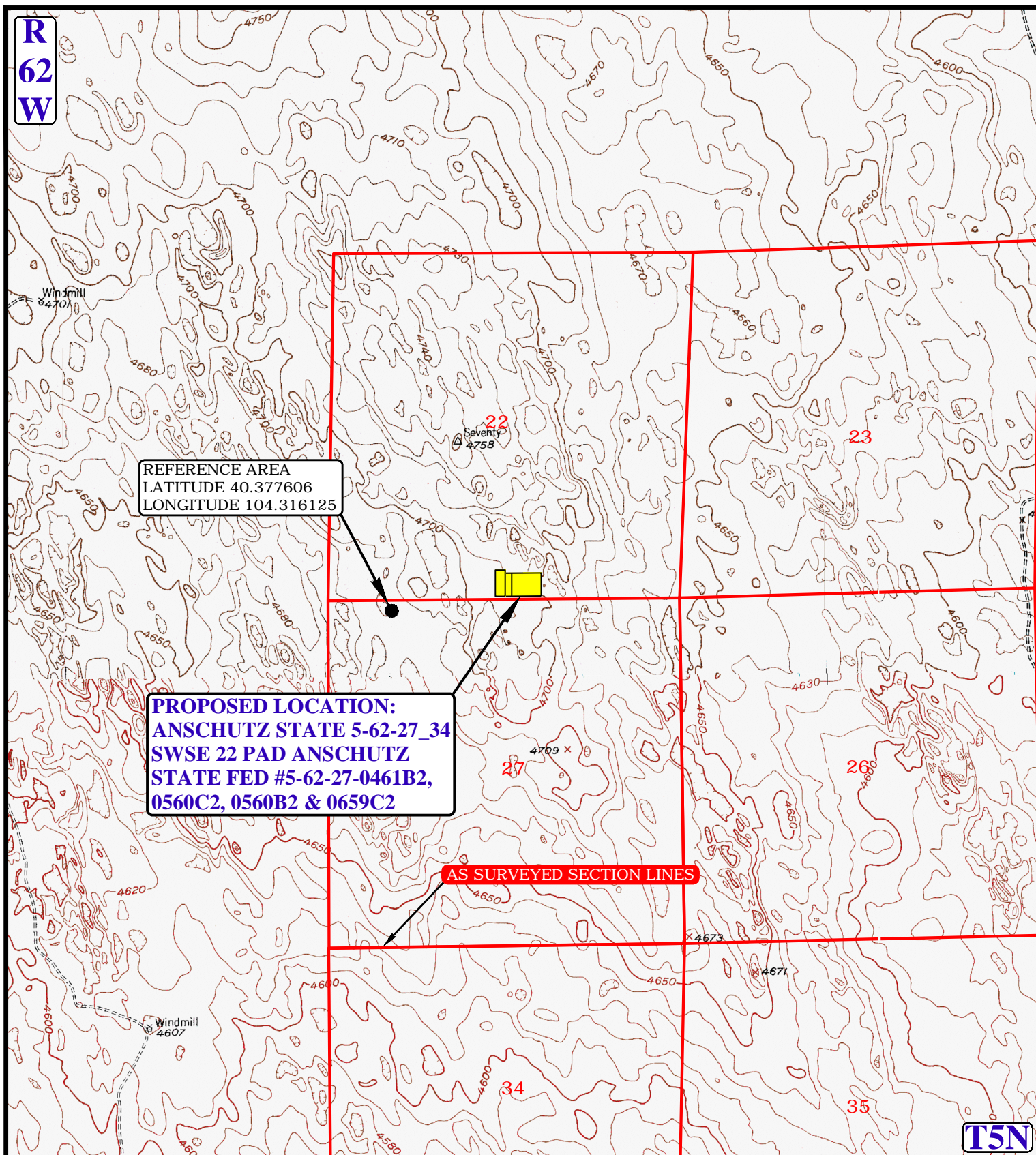


R
62
W



LEGEND:



UELS, LLC
Corporate Office * 85 South 200 East
Vernal, UT 84078 * (435) 789-1017



BILL BARRETT CORPORATION

ANSCHUTZ STATE 5-62-27_34 SWSE 22 PAD
ANSCHUTZ STATE FED #5-62-27-0461B2,
0560C2, 0560B2 & 0659C2
SW 1/4 SE 1/4, SECTION 22, T5N, R62W, 6th P.M.
WELD COUNTY, COLORADO

DRAWN BY: J.L.G.

DATE DRAWN: 07-31-15

SCALE: 1" = 2000'

REV: 00-00-00

REFERENCE AREA MAP

REF TOPO