

Piceance Energy LLC - EBUS

Piceance 28-03W

Patterson 306

Post Job Summary

Cement Surface Casing

Date Prepared: 10/12/2015

Job Date: 10/02/2015

Submitted by: Patrick Ealey – Grand Junction Cement Engineer

The Road to Excellence Starts with Safety

Sold To #: 344919	Ship To #: 3123916	Quote #: 0022106862	Sales Order #: 0902797466
Customer: PICEANCE ENERGY LLC - EBUS		Customer Rep: ROGER FOSTER	
Well Name: PICEANCE		Well #: 28-03W	API/UWI #: 05-077-09771-00
Field: VEGA	City (SAP): COLLBRAN	County/Parish: MESA	State: COLORADO
Legal Description: SW NW-28-9S-93W-1514FNL-1174FWL			
Contractor: PATTERSON-UTI ENERGY		Rig/Platform Name/Num: PATTERSON 306	
Job BOM: 7521			
Well Type: DIRECTIONAL GAS			
Sales Person: HALAMERICA\HX41066		Srvc Supervisor: Jesse Slaughter	

Job

Formation Name	
Formation Depth (MD)	Top
Form Type	BHST
Job depth MD	1572ft
Water Depth	Wk Ht Above Floor 4ft
Perforation Depth (MD)	From
	To

Well Data

Description	New / Used	Size in	ID in	Weight lbm/ft	Thread	Grade	Top MD ft	Bottom MD ft	Top TVD ft	Bottom TVD ft
Casing		16	15.25	65			0	60		
Casing		8.625	8.097	24	8 RD (LT&C)		0	1572		0
Open Hole Section			11				60	1582		0

Tools and Accessories

Type	Size in	Qty	Make	Depth ft	Type	Size in	Qty	Make
Guide Shoe	8.625			1572	Top Plug	8.625	1	HES
Float Shoe	8.625				Bottom Plug	8.625	1	HES
Float Collar	8.625				SSR plug set	8.625		HES
Insert Float	8.625				Plug Container	8.625	1	HES
Stage Tool	8.625				Centralizers	8.625		HES

Fluid Data

Stage/Plug #: 1

Fluid #	Stage Type	Fluid Name	Qty	Qty UoM	Mixing Density lbm/gal	Yield ft3/sack	Mix Fluid Gal	Rate bbl/min	Total Mix Fluid Gal
1	Fresh Water	Fresh Water	40	bbl	8.33			4	

Fluid #	Stage Type	Fluid Name	Qty	Qty UoM	Mixing Density lbm/gal	Yield ft3/sack	Mix Fluid Gal	Rate bbl/min	Total Mix Fluid Gal
2	VariCem GJ5	VARICEM (TM) CEMENT	192	sack	12.3	2.46		6	14.17

14.17 Gal

FRESH WATER

Fluid #	Stage Type	Fluid Name	Qty	Qty UoM	Mixing Density lbm/gal	Yield ft3/sack	Mix Fluid Gal	Rate bbl/mi n	Total Mix Fluid Gal
3	VariCem GJ5	VARICEM (TM) CEMENT	120	sack	12.8	2.18		6	12.11
12.11 Gal		FRESH WATER							
Fluid #	Stage Type	Fluid Name	Qty	Qty UoM	Mixing Density lbm/gal	Yield ft3/sack	Mix Fluid Gal	Rate bbl/mi n	Total Mix Fluid Gal
4	Fresh Water Displacement	Fresh Water Displacement	97.0	bbl	8.3			10	
Cement Left In Pipe		Amount	47 ft		Reason			Shoe Joint	
Comment									

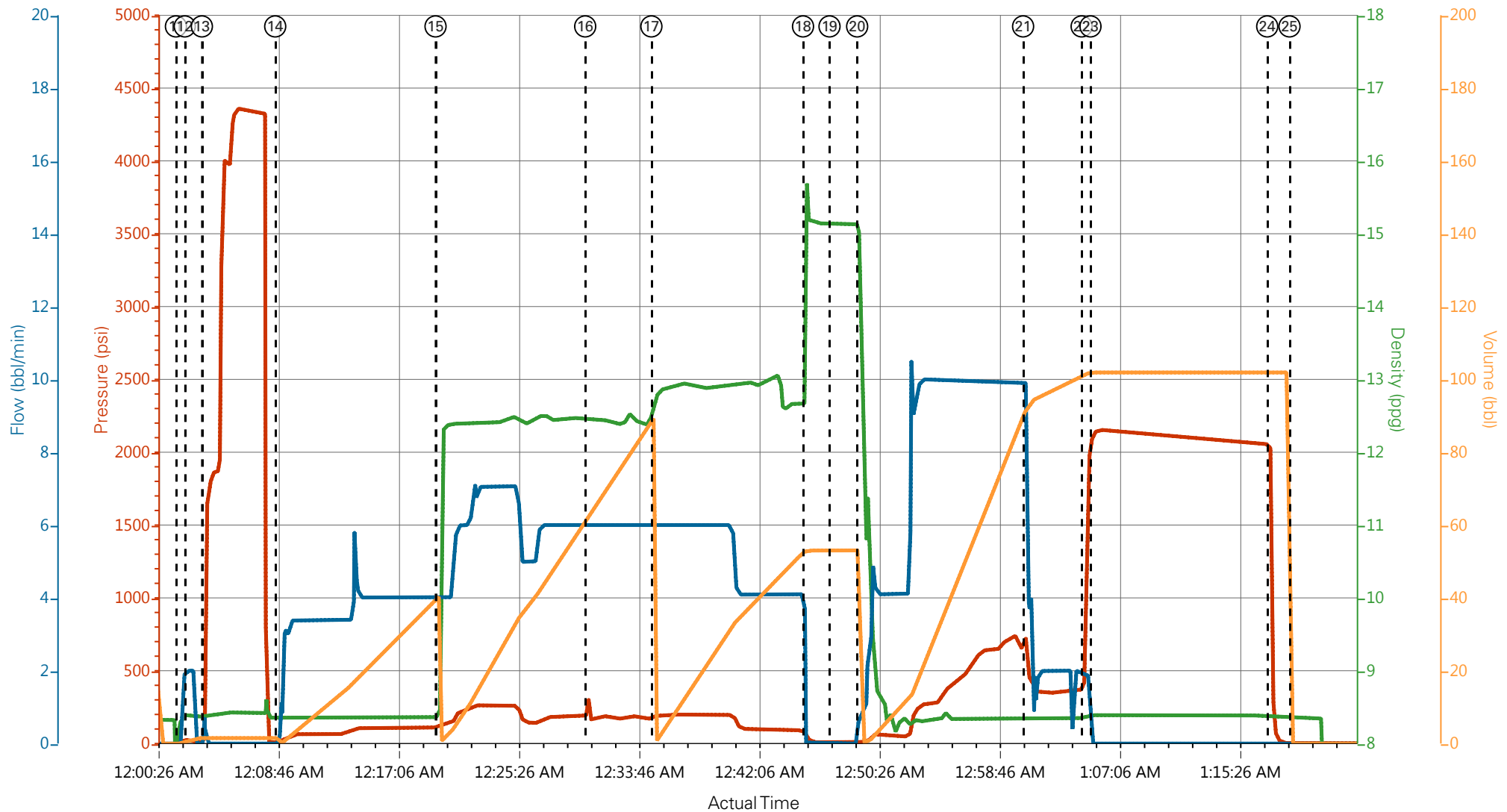
1.0 Real-Time Job Summary

1.1 Job Event Log

Type	Seq. No.	Activity	Date	Time	Source	DH Density (ppg)	Comb Pump Rate (bbl/min)	PS Pump Press (psi)	Pump Stg Tot (bbl)	Comments
Event	1	Call Out	10/1/2015	13:00:00	USER					
Event	2	Pre-Convoy Safety Meeting	10/1/2015	15:50:00	USER					WITH ALL HES PERSONNEL
Event	3	Crew Leave Yard	10/1/2015	16:00:00	USER					
Event	4	Arrive At Loc	10/1/2015	18:00:00	USER					RIG WAS RUNNING CASING UPON HES ARRIVAL
Event	5	Assessment Of Location Safety Meeting	10/1/2015	20:50:00	USER					WITH ALL HES PERSONNEL
Event	6	Other	10/1/2015	21:00:00	USER					
Event	7	Pre-Rig Up Safety Meeting	10/1/2015	21:05:00	USER					WITH ALL HES PERSONNEL
Event	8	Rig-Up Equipment	10/1/2015	21:10:00	USER					
Event	9	Pre-Job Safety Meeting	10/1/2015	23:40:00	USER					WITH ALL PERSONNEL
Event	10	Start Job	10/1/2015	23:59:00	COM5					TD 1582 FT, TP 1572 FT, SHOE 46.60 FT, CSG 8 5/8 IN 24 LB/FT, HOLE 11 IN, MUD WT 9.5 PPG
Event	11	Prime Pumps	10/2/2015	00:01:51	COM5	8.33	2.0	28.0	2.0	FRESH WATER
Event	12	Drop Bottom Plug	10/2/2015	00:02:28	USER					PLUG LAUNCHED
Event	13	Test Lines	10/2/2015	00:03:39	COM5					TESTED LINES TO 4363 PSI PRESSURE HOLDING
Event	14	Pump Spacer 1	10/2/2015	00:08:44	COM5	8.33	4.0	100.0	40.0	FRESH WATER
Event	15	Pump Lead Cement	10/2/2015	00:19:51	COM5	12.3	6.0	190.0	84.1	192 SKS AT 12.3 PPG, 2.46 FT3/SK, 14.17 GAL/SK

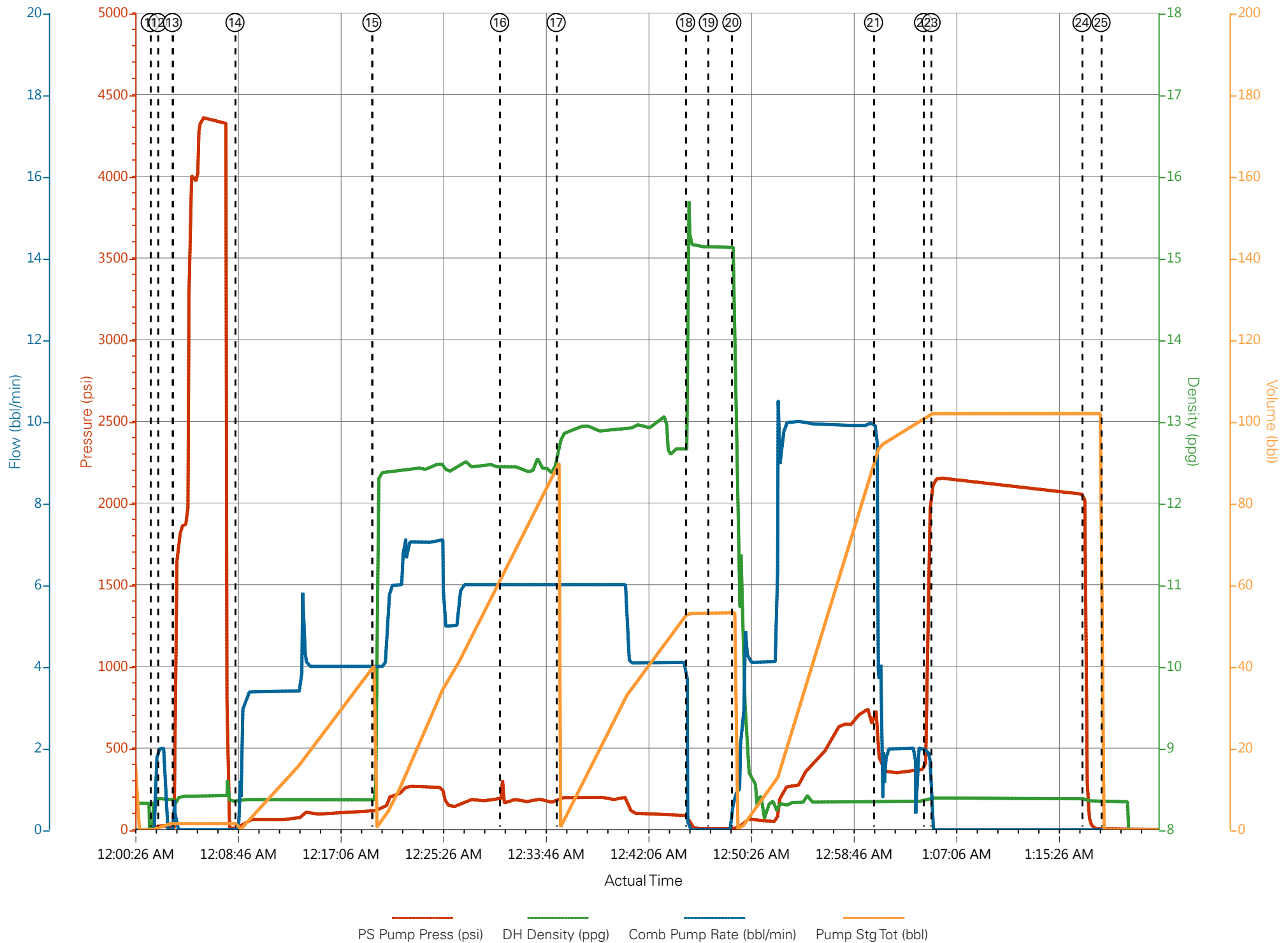
Event	16	Bump Plug	10/2/2015	00:30:14	USER					BOTTOM PLUG
Event	17	Pump Tail Cement	10/2/2015	00:34:49	COM5	12.8	6.0	100.0	46.6	120 SKS AT 12.8 PPG, 2.18 FT3/SK, 12.11 GAL/SK
Event	18	Shutdown	10/2/2015	00:45:20	USER					
Event	19	Drop Top Plug	10/2/2015	00:47:10	COM5					PLUG LAUNCHED
Event	20	Pump Displacement	10/2/2015	00:49:05	COM5	8.33	10.0	720.0	97.0	FRESH WATER
Event	21	Slow Rate	10/2/2015	01:00:36	USER	8.33	2.0	380.0	87.0	SLOWED RATE 10 BBLS PRIOR TO CALCULATED DISPLACEMENT.
Event	22	Bump Plug	10/2/2015	01:04:39	COM5			2170.0		
Event	23	Pressure Test	10/2/2015	01:05:16	USER					PRESSURE TESTED CASING FOR 10 MIN AS PER COMPANY REP.
Event	24	Check Floats	10/2/2015	01:17:31	USER					FLOATS HOLDING. HES RETURNED 1/2 BBL H2O TO PUMP.
Event	25	End Job	10/2/2015	01:19:04	COM5					GOOD CIRCULATION THROUGHOUT JOB. PIPE WAS STATIC DURING JOB. HES RETURNED 27 BBLS CEMENT TO SURFACE. USED 20 LBS SUGAR FOR JOB.
Event	26	Pre-Rig Down Safety Meeting	10/2/2015	01:25:00	USER					WITH ALL HES PERSONNEL
Event	27	Rig-Down Equipment	10/2/2015	01:30:00	USER					
Event	28	Pre-Convoy Safety Meeting	10/2/2015	02:20:00	USER					WITH ALL HES PERSONNEL
Event	29	Crew Leave Location	10/2/2015	02:30:00	USER					
Event	30	Comment	10/2/2015	02:31:00	USER					THANK YOU FOR USING HALLIBURTON CEMENT DEPARTMENT. JESSE SLAUGHTER AND CREW

Piceance 28-03W Surface



① Call Out n/a;n/a;n/a;n/a	⑨ Pre-Job Safety Meeting -1;8.33;0;15.9	⑰ Pump Tail Cement 189;12.67;6;0	25 End Job 3;8.35;0;0
② Pre-Convoy Safety Meeting n/a;n/a;n/a;n/a	⑩ Start Job 0;8.33;0;15.9	⑱ Shutdown 44;15.7;0;53	26 Pre-Rig Down Safety Meeting 2;-0.02;0;0
③ Crew Leave Yard n/a;n/a;n/a;n/a	⑪ Prime Pumps -3;8.35;0;0	⑲ Drop Top Plug 5;15.13;0;53	27 Rig-Down Equipment n/a;n/a;n/a;n/a
④ Arrive At Loc n/a;n/a;n/a;n/a	⑫ Drop Bottom Plug 27;8.39;2;0.8	20 Pump Displacement 12;13.46;0.9;53.2	28 Pre-Convoy Safety Meeting n/a;n/a;n/a;n/a
⑤ Assessment Of Location Safety Meeting n/a;n/a;n/a;n/a	⑬ Test Lines 1659;8.33;0;1.5	21 Slow Rate 728;8.35;9.9;92.3	29 Crew Leave Location n/a;n/a;n/a;n/a
⑥ Spot Equipment 86;0.03;0;0	⑭ Pump H2O Spacer 8;8.35;0;1.5	22 Bump Plug 743;8.35;1.9;101.4	30 Comment n/a;n/a;n/a;n/a
⑦ Pre-Rig Up Safety Meeting 113;8.43;5.9;1.9	⑮ Pump Lead Cement 114;8.37;4;40.4	23 Pressure Test 2132;8.39;0;101.9	
⑧ Rig-Up Equipment 1;8.43;0;15.9	⑯ Bump Plug 138;12.43;6;62.3	24 Check Floats 1790;8.38;0;101.9	

Piceance 28-03W Surface



HALLIBURTON

Water Analysis Report

Company: PICEANCE

Submitted by: JESSE SLAUGHTER

Attention: LAB

Lease PICEANCE

Well # 28-03W

Date: 10/1/2015

Date Rec.:

S.O.# 902797466

Job Type: SURFACE

Specific Gravity	<i>MAX</i>	1
pH	<i>8</i>	6
Potassium (K)	<i>5000</i>	250 Mg / L
Calcium (Ca)	<i>500</i>	120 Mg / L
Iron (FE2)	<i>300</i>	0 Mg / L
Chlorides (Cl)	<i>3000</i>	0 Mg / L
Sulfates (SO ₄)	<i>1500</i>	UNDER 200 Mg / L
Chlorine (Cl ₂)		0 Mg / L
Temp	<i>40-80</i>	60 Deg
Total Dissolved Solids		200 Mg / L

Respectfully: JESSE SLAUGHTER

Title: CEMENTING SUPERVISOR

Location: Grand Junction, CO

NOTICE:

This report is limited to the described sample tested. Any person using or relying on this report agrees that Halliburton shall not be liable for any loss or damage whether due to act or omission resulting from such report or its