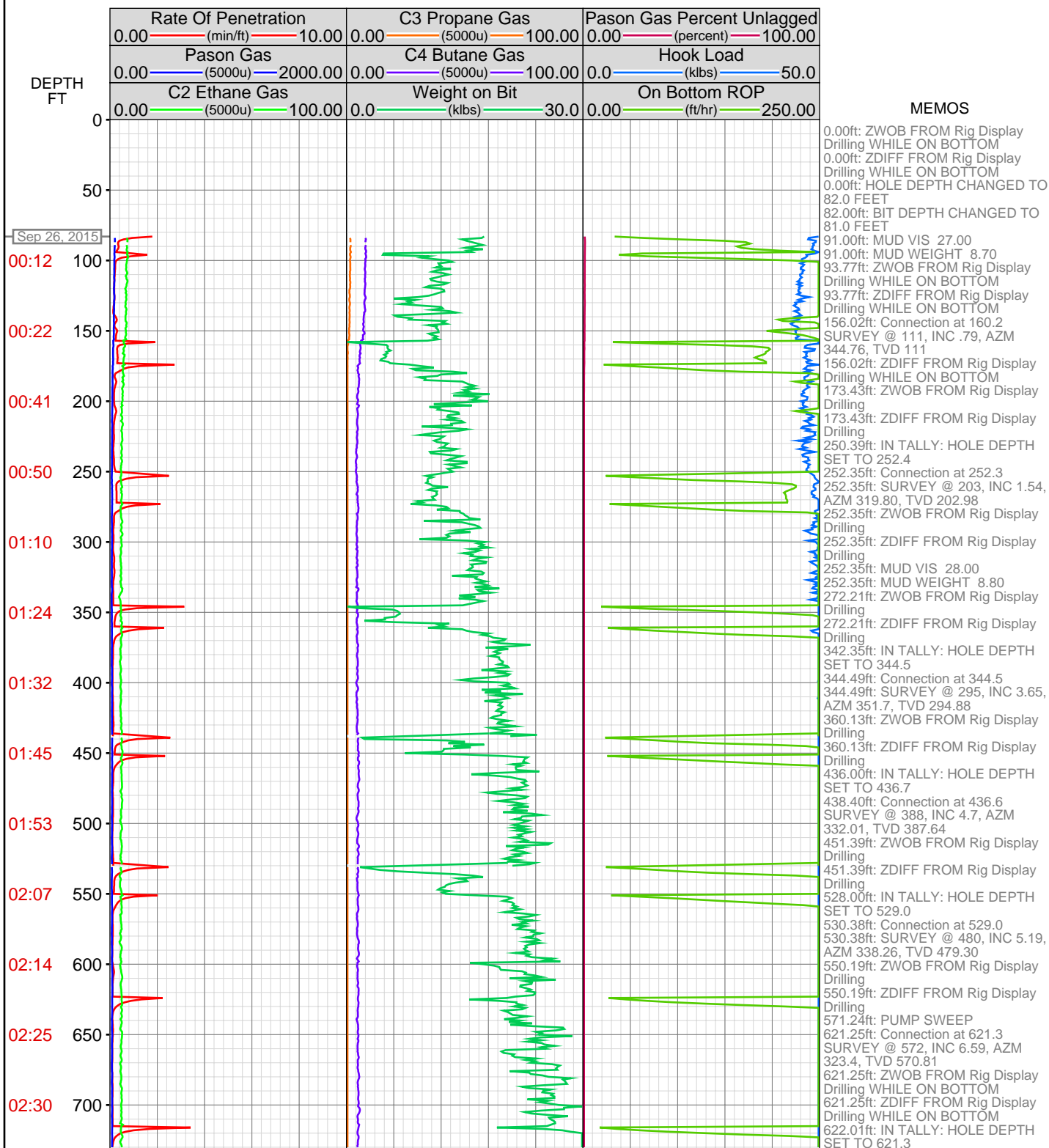
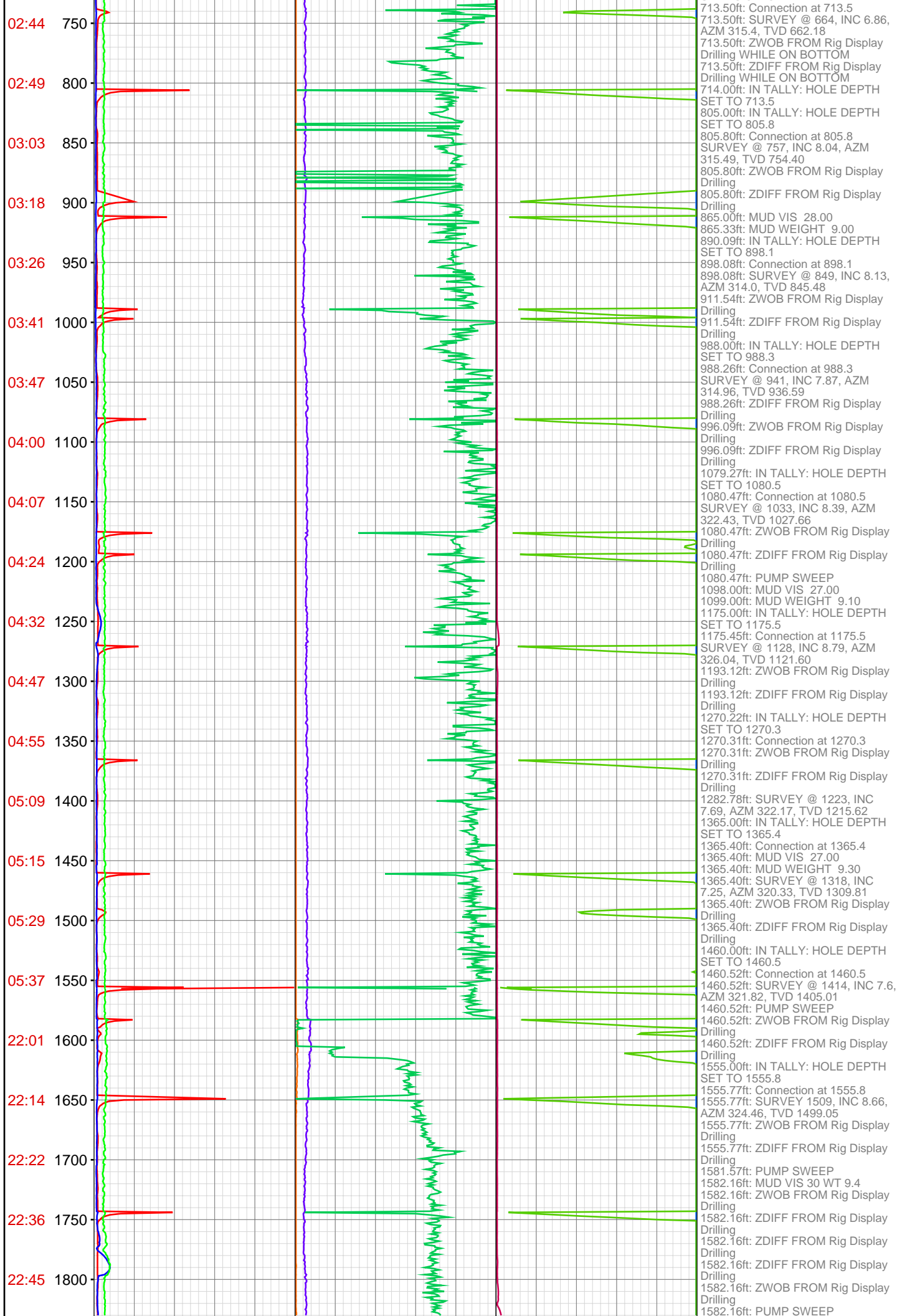
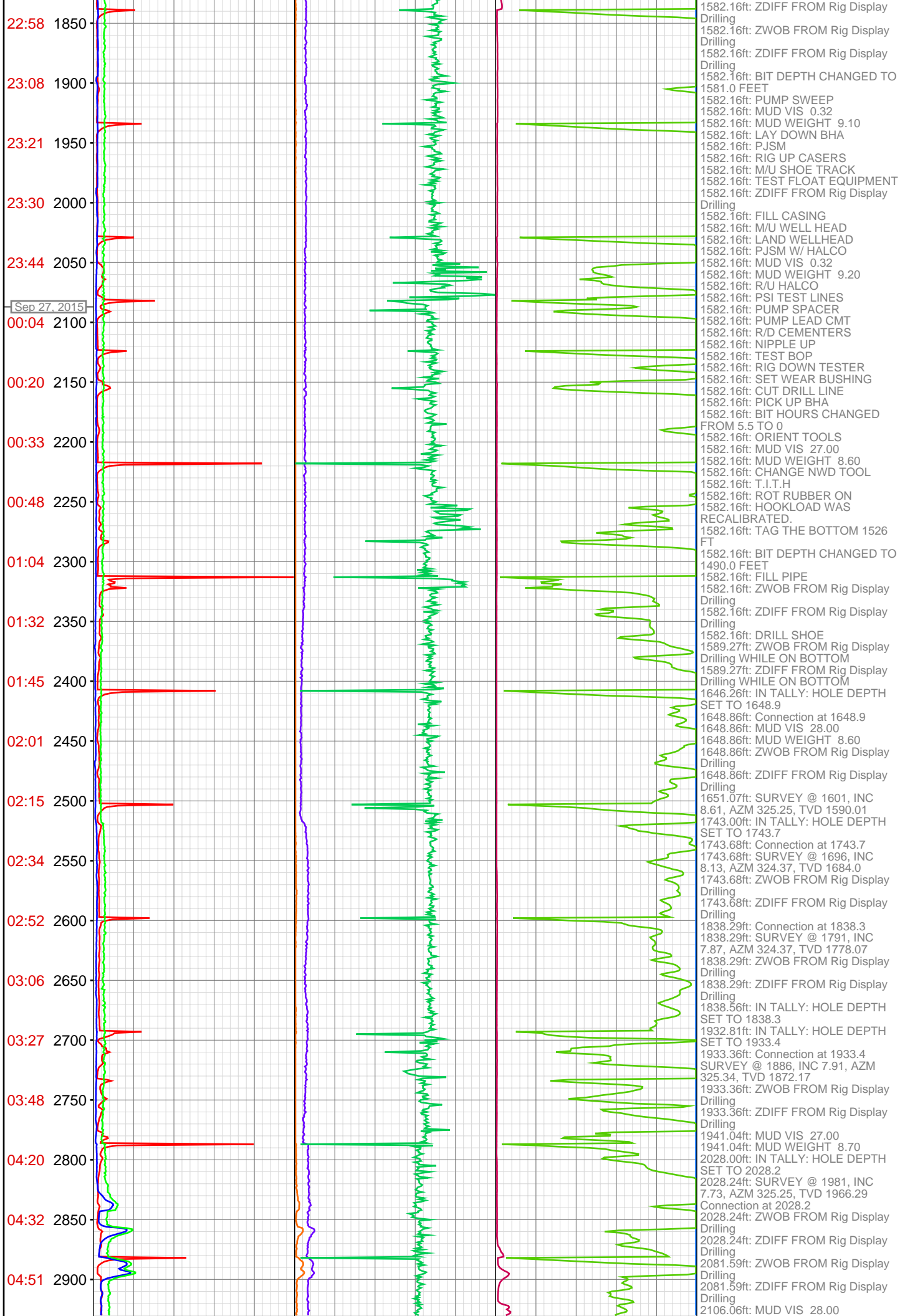


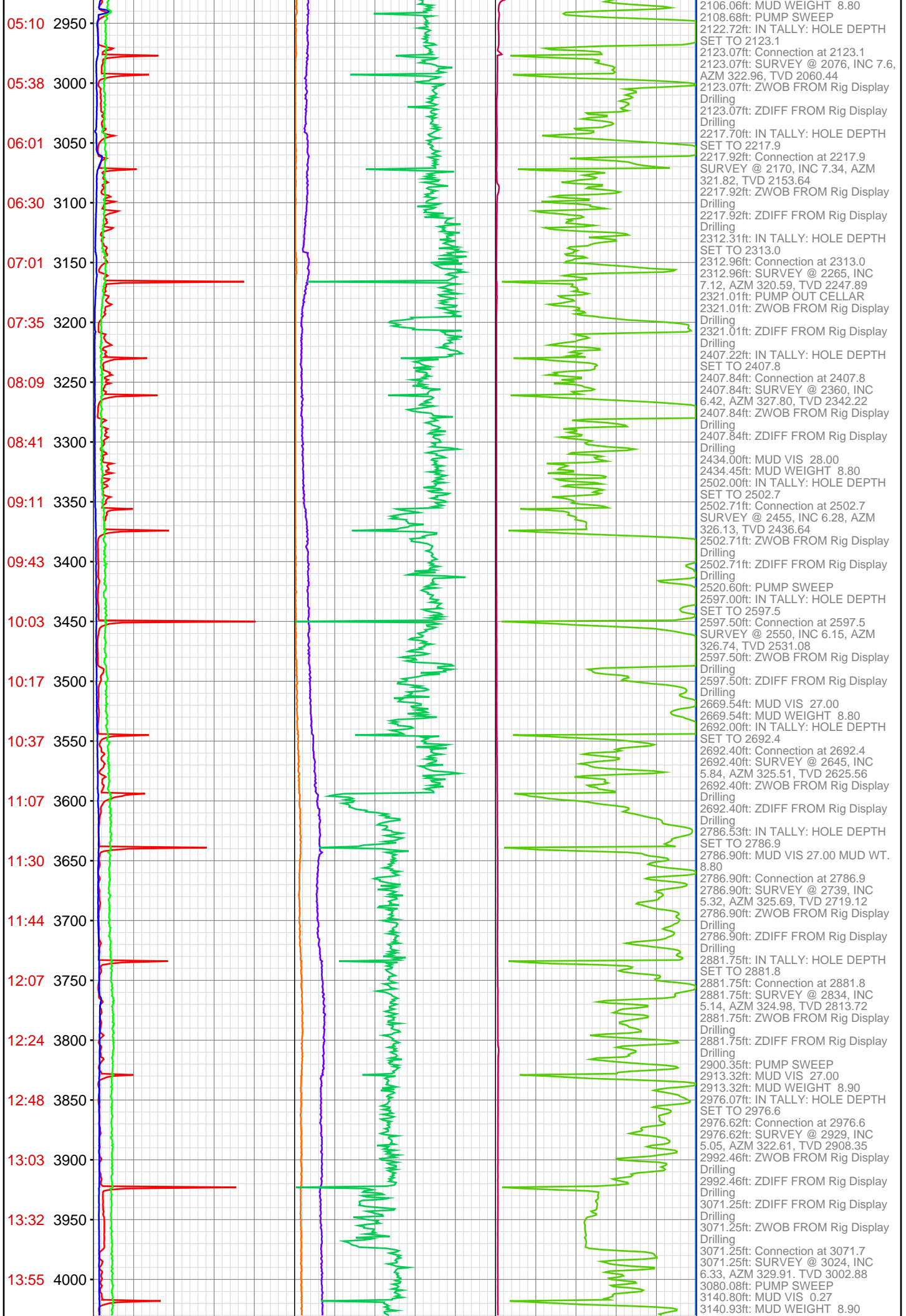
OPERATOR: Piceance Energy, LLC
WELL: PICEANCE 28-05W
FIELD:
LOCATION: SEC 28 TWP 9S RNG 93W
COUNTRY: USA
RIG: Pat-UTI 306

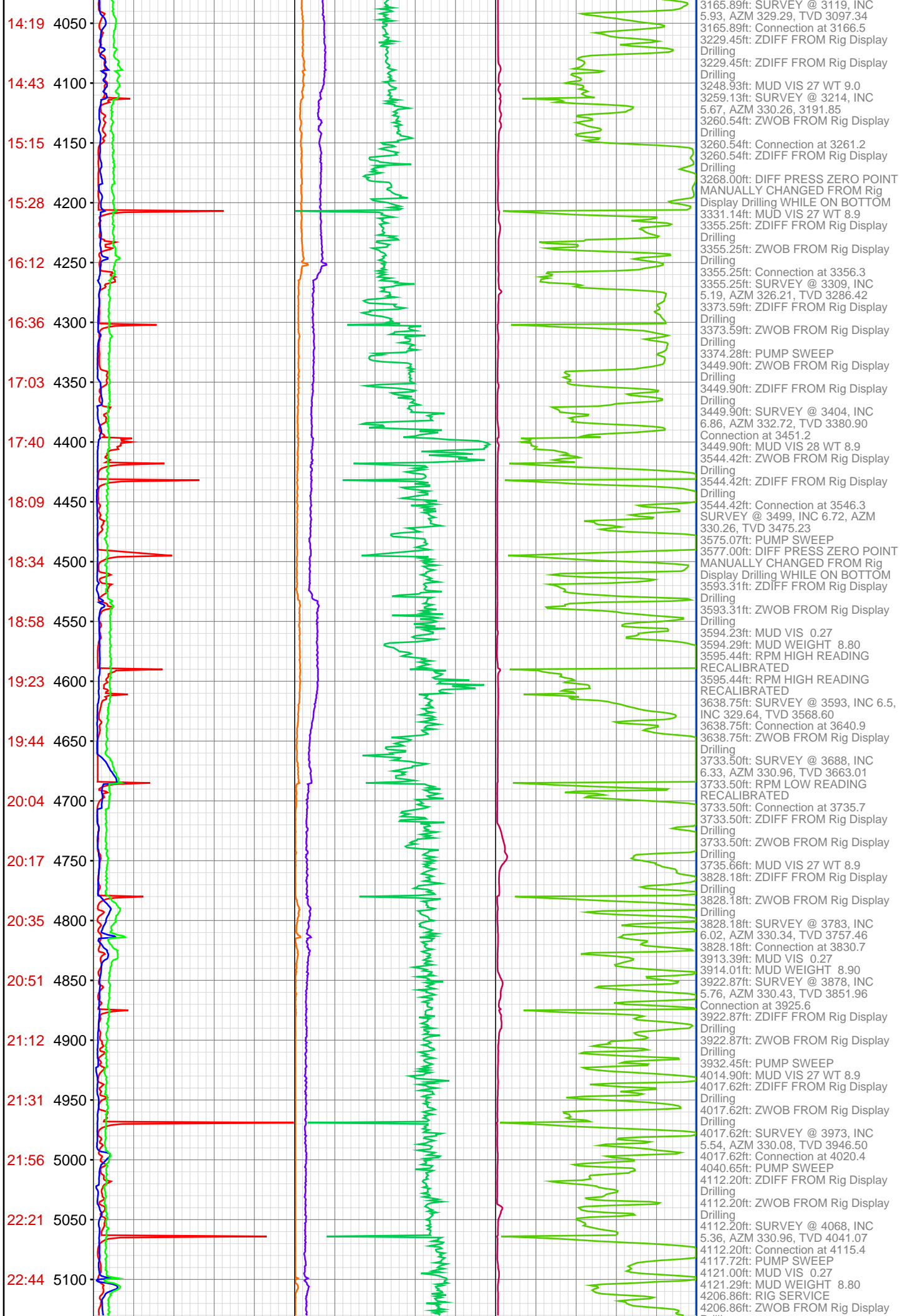
CONTRACTOR: Patterson-UTI Drilling Company
UNIQUE WELL ID: 05-077-09773-00
SPUD DATE: Sep 26, 2015 00:00
RELEASE DATE:

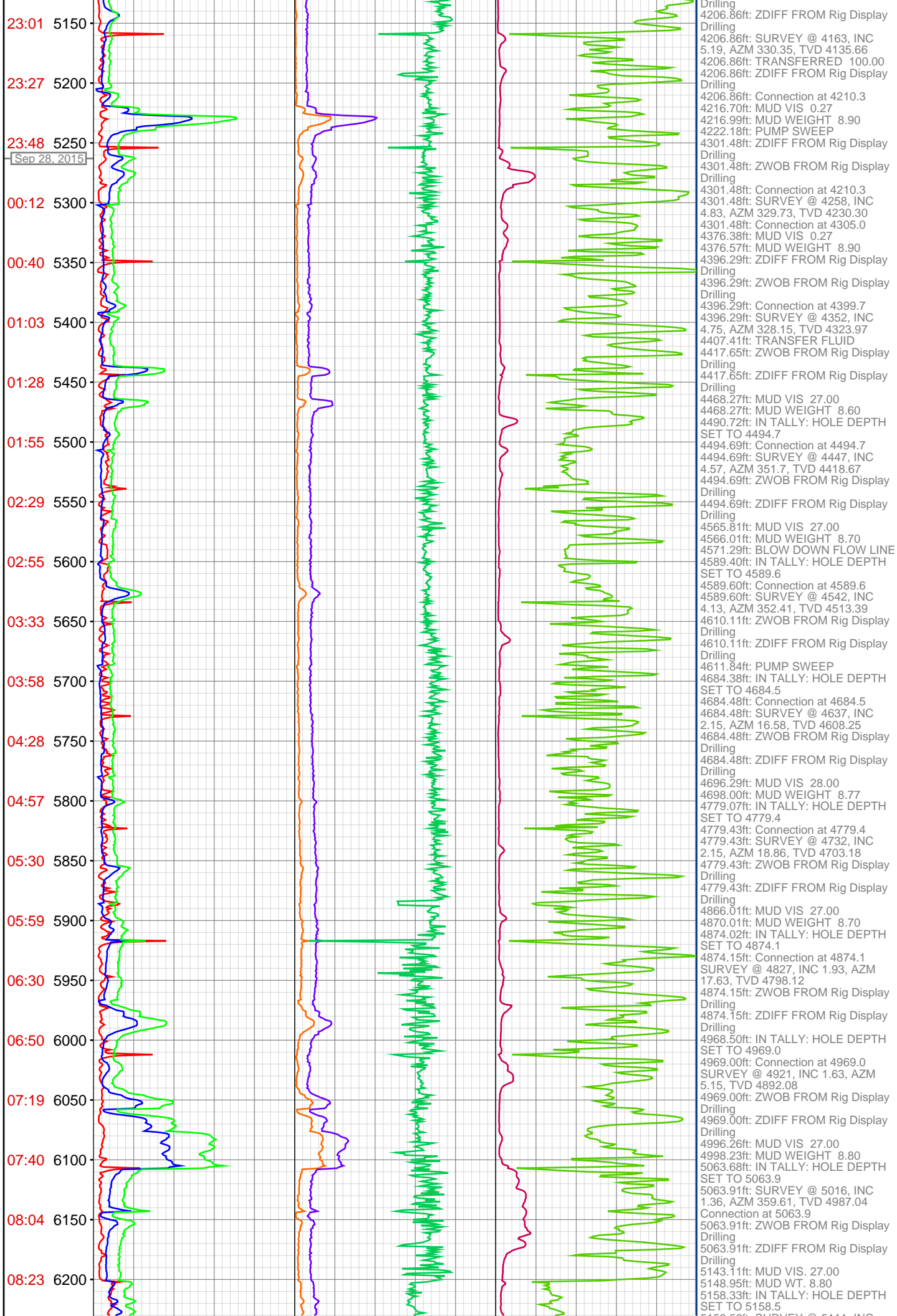


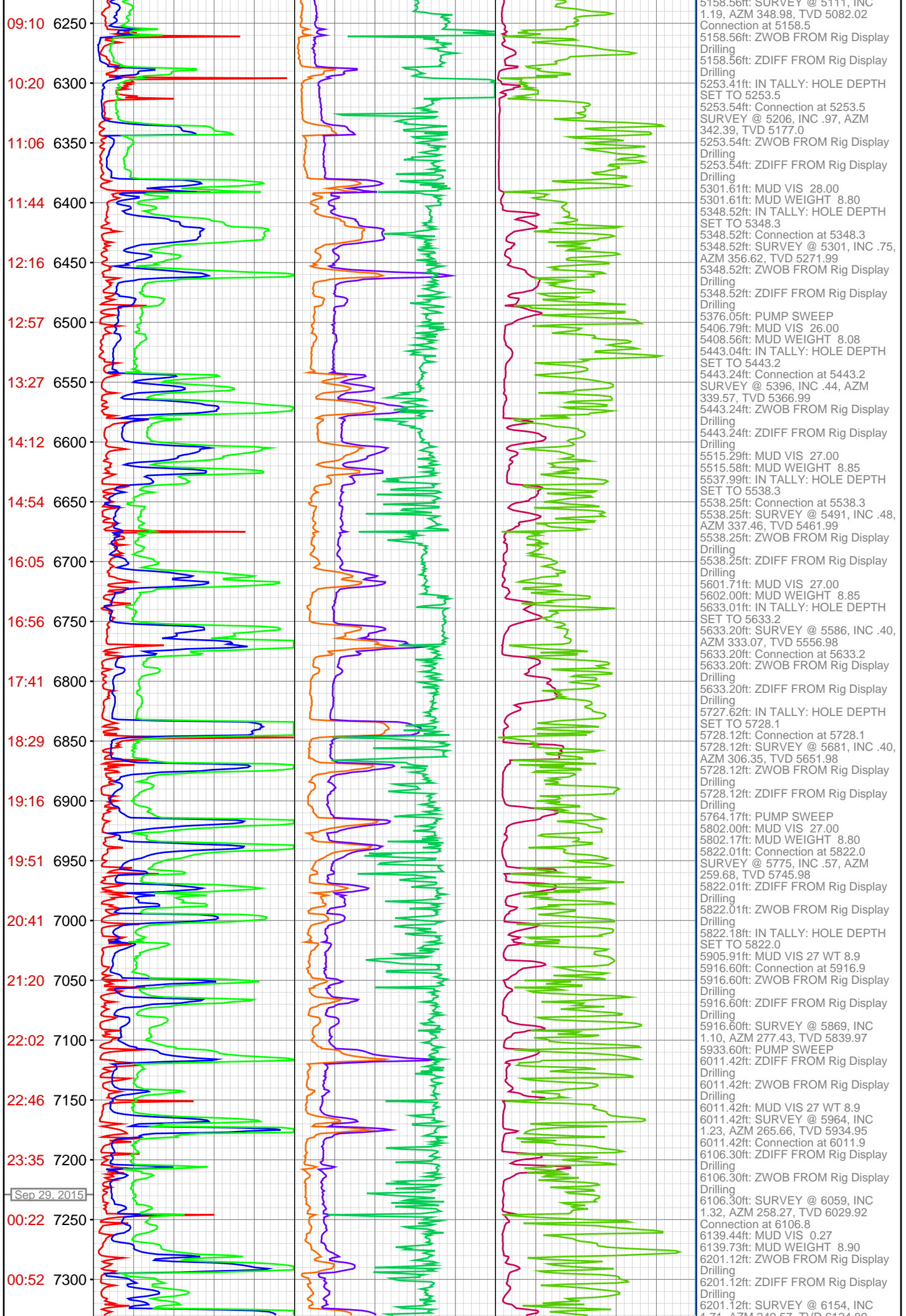


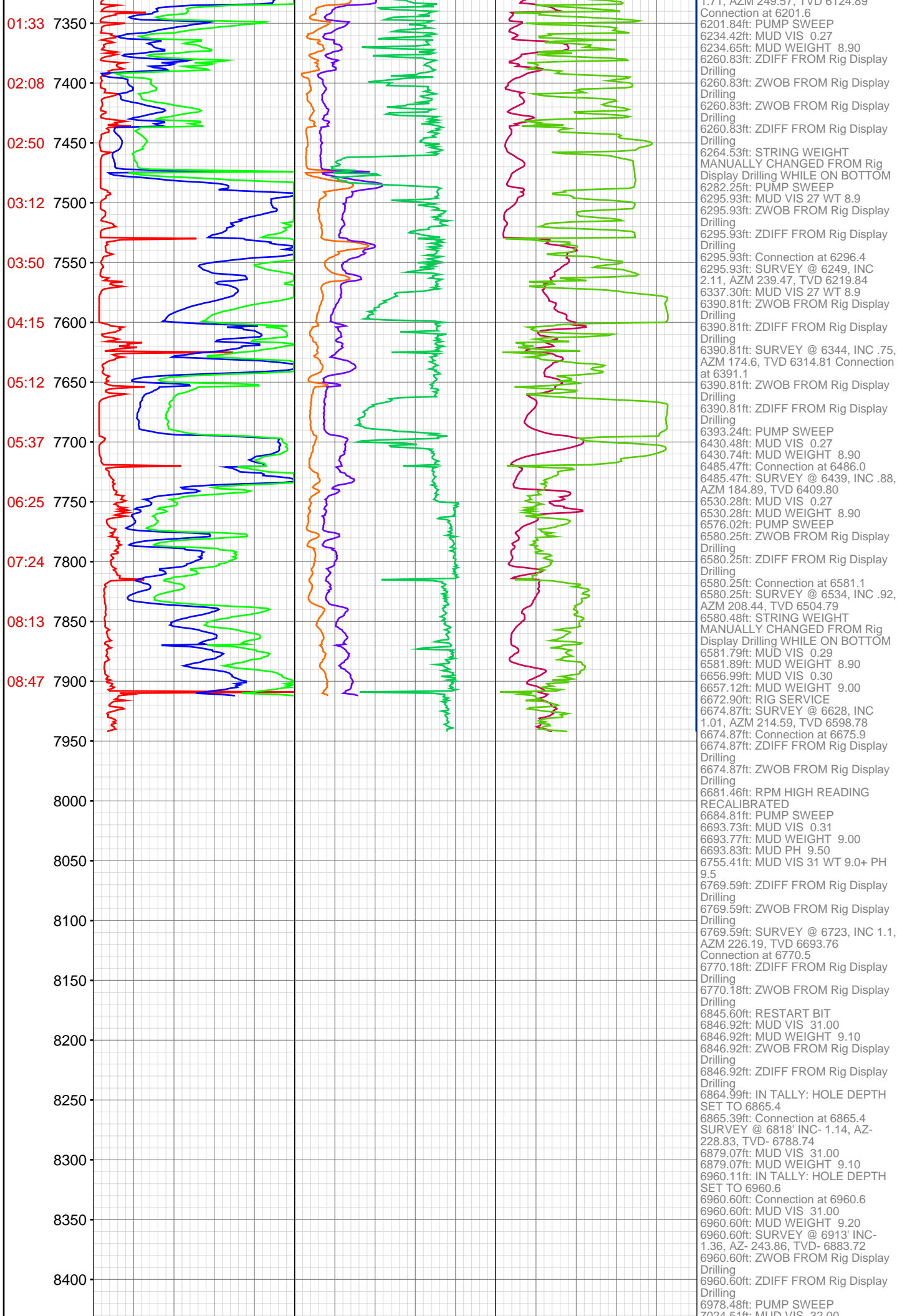












8450

8500

8550

8600

8650

8700

8750

8800

8850

8900

8950

9000

9050

9100

9150

9200

9250

9300

9350

9400

9450

9500

7024.51ft: MUD VIS 32.00
7024.51ft: MUD WEIGHT 9.20
7055.05ft: IN TALLY: HOLE DEPTH
SET TO 7055.5
7055.45ft: Connection at 7055.4
SURVEY @ 7008' INC- 1.14, AZ-
248.87, TVD- 6978.70
7055.45ft: ZWOB FROM Rig Display
Drilling
7055.45ft: ZDIFF FROM Rig Display
Drilling
7100.75ft: MUD VIS 32.00
7103.94ft: MUD WT. 9.2
7150.30ft: IN TALLY: HOLE DEPTH
SET TO 7150.7
7150.69ft: Connection at 7150.7
SURVEY @ 7103' INC- 1.32, AZ-
238.15, TVD- 7073.68
7150.69ft: ZWOB FROM Rig Display
Drilling
7150.69ft: ZDIFF FROM Rig Display
Drilling
7156.40ft: MUD VIS 32.00
7156.79ft: MUD WEIGHT 9.25
7221.56ft: MUD VIS 32.00
7224.97ft: MUD WT. 9.3
7245.28ft: IN TALLY: HOLE DEPTH
SET TO 7245.8
7245.83ft: Connection at 7245.8
SURVEY @ 7198' INC- 1.67, AZ-
231.82, TVD- 7168.64
7245.83ft: ZWOB FROM Rig Display
Drilling
7245.83ft: ZDIFF FROM Rig Display
Drilling
7246.36ft: ZDIFF FROM Rig Display
Drilling
7306.63ft: MUD VIS 32.00
7306.63ft: MUD WEIGHT 9.30
7340.39ft: IN TALLY: HOLE DEPTH
SET TO 7340.4
7340.49ft: Connection at 7340.4
7340.49ft: SURVEY @ 7293' INC-
1.89, AZ- 241.31, TVD- 7263.60
7382.68ft: MUD VIS 32.00
7382.68ft: MUD WEIGHT 9.40
7435.07ft: IN TALLY: HOLE DEPTH
SET TO 7435.2
7435.20ft: Connection at 7435.2
7435.20ft: SURVEY @ 7388' INC-
2.46, AZ- 252.83, TVD- 7358.53
7435.20ft: ZWOB FROM Rig Display
Drilling
7435.20ft: ZDIFF FROM Rig Display
Drilling
7471.19ft: MUD VIS 33.00
7474.05ft: MUD WT. 9.4
7529.76ft: Connection at 7529.8
7529.76ft: ZWOB FROM Rig Display
Drilling
7529.76ft: ZDIFF FROM Rig Display
Drilling
7529.82ft: IN TALLY: HOLE DEPTH
SET TO 7529.8
7561.84ft: MUD VIS 35.00
7561.98ft: MUD WEIGHT 9.50
7624.38ft: IN TALLY: HOLE DEPTH
SET TO 7624.9
7624.84ft: Connection at 7624.9
7624.84ft: SURVEY @ 7577' INC-
3.87, AZ- 251.24, TVD- 7547.22
7624.84ft: ZWOB FROM Rig Display
Drilling
7624.84ft: ZDIFF FROM Rig Display
Drilling
7643.01ft: MUD VIS 40.00
7643.21ft: MUD WEIGHT 9.50
7643.21ft: MUD PH 9.80
7719.29ft: IN TALLY: HOLE DEPTH
SET TO 7719.7
7719.69ft: Connection at 7719.7
7719.69ft: SURVEY @ 7672' INC-
3.91, AZ- 248.08, TVD- 7642.01
7719.69ft: ZWOB FROM Rig Display
Drilling
7719.69ft: ZDIFF FROM Rig Display
Drilling
7735.04ft: MUD I/O VIS 57/52 WT
9.5+9.6
7781.56ft: I/O VIS 58/55 WT 9.6
7814.34ft: ZWOB FROM Rig Display
Drilling
7814.34ft: ZDIFF FROM Rig Display
Drilling
7814.34ft: SURVEY @ 7767, INC
3.91, AZM 246.5, TVD 7736.78
Connection at 7814.5
7831.79ft: MUD VIS 0.59
7831.99ft: MUD WEIGHT 9.60
7907.55ft: MUD VIS 60 WT 9.7
7908.99ft: SURVEY @ 7862, INC
3.69, AZM 246.41, TVD 7831.58
Connection at 7909.3
7908.99ft: ZDIFF FROM Rig Display
Drilling
7908.99ft: ZWOB FROM Rig Display
Drilling

