

**Encana Interim Reclamation Submittal**

Site Name: Frederiksen 63N-68W/1A-28H  
Location ID#: 422731  
Location: SENE 28 3N 68W  
Lat./Long: 40.19794/-104.99929

Associated Wells:  
Frederiksen # 1A-28H API # 05-123-33363 (previously drilled in 2011)  
Frederiksen # 1B-28H-H368 API # 05-123-37667  
Frederiksen # 1C-28H-H368 API # 05-123-37668

Jun 3, 2015, 8:41:13 AM  
1020027632,-105.00011035

Frederiksen 1A-28H  
Location ID# 422731  
API#s  
05-123-33363 05-123-37667 05-123-37668



At edge of well pad looking west towards subdivision construction.

Facing west

Jun 3, 2015, 8:42:14 AM  
1019798912,-105.00197909

Frederiksen 1A-28H  
Location ID# 422731  
API#s  
05-123-33363 05-123-37667 05-123-37668



At edge of well pad looking south towards newly constructed road.

Facing south

Jun 3, 2015, 8:42:54 AM  
10.20166321,-105.00361310

Frederiksen 1A-28H  
Location ID# 422731  
AP #'s  
05-123-33363 05-123-37667 05-123-37668



At edge of well pad looking east  
towards CR 7.

Facing east

Jun 3, 2015, 8:39:19 AM  
10.19928588,-105.00261427

Frederiksen 1A-28H  
Location ID# 422731  
AP #'s  
05-123-33363 05-123-37667 05-123-37668



At edge of well pad looking north  
towards combined facility sRe.

Facing north

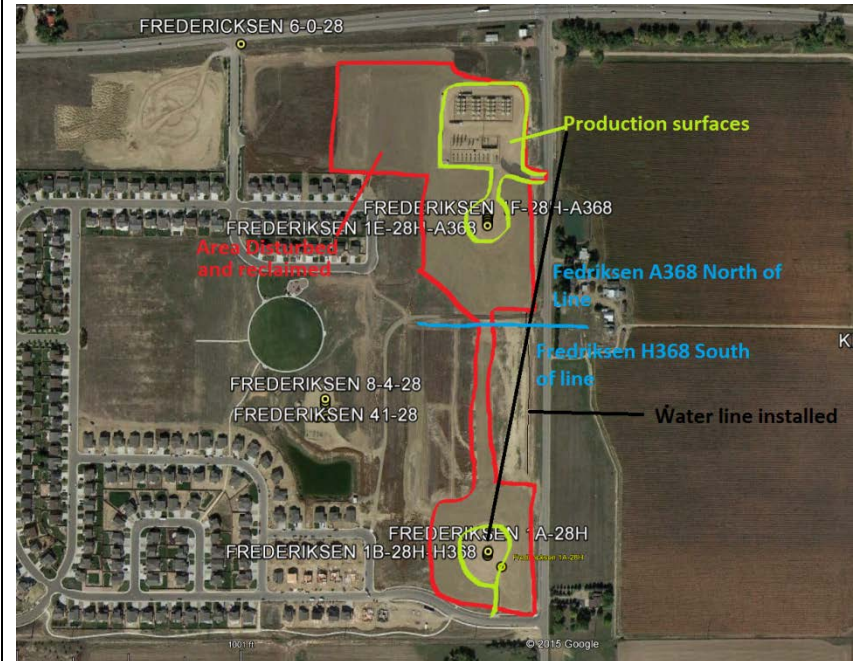
Jun 3, 2015, 8:43:47 AM  
40.19888329, -105.00263507

Frederiksen 1A-28H  
Location ID# 422731  
API#s  
05-123-33363 05-123-37667 05-123-37668



~200 ft north west of well pad  
looking at pre-existing vegetation  
compared to re-seeded disturbance.

New vegetation compared to old vegetation adjacent on west side facing north



Area reclaimed and area used for production