



RADIAL CEMENT BOND LOG

Company KERR-MCGEE OIL AND GAS
Well ANDERSON MEL GU 1
Field WATTENBERG
County WELD State COLORADO

Company KERR-MCGEE OIL AND GAS
Well ANDERSON MEL GU 1
Field WATTENBERG
County WELD
State COLORADO

Location: API #: 05123084220000
SW SW 1100' FSL 1180' FWL
SEC 33 TWP 2N RGE 66W
Permanent Datum GROUND LEVEL Elevation 4976'
Log Measured From KELLY BUSHING = 10'
Drilling Measured From KELLY BUSHING
Other Services N A
Elevation K.B. 4986'
D.F. 4985'
G.L. 4976'

Date 8 DEC 2015

Run Number ONE
Depth Driller 8110'
Depth Logger 4400'
Bottom Logged Interval 4400'
Top Log Interval SURFACE
Open Hole Size 7 7/8"
Type Fluid WATER
Density / Viscosity 8.3 #
Max. Recorded Temp. N/A
Estimated Cement Top SEE LOG
Time Well Ready N/A
Time Logger on Bottom N/A
Equipment Number W-203
Location AULT COLORADO
Recorded By DEVEN DELAP JR
Witnessed By NATE WINDHOLZ

Borehole Record
Run Number Bit From To Size Weight From To

Casing Record
Surface String 8.875" 24# Wgt/Ft Top Bottom
Prot. String 4.5" 11.6# SURFACE 200
Production String T.D.
Liner

>>> Fold Here >>>

All interpretations are opinions based on inferences from electrical or other measurements and we cannot and do not guarantee the accuracy or correctness of any interpretation, and we shall not, except in the case of gross or willful negligence on our part, be liable or responsible for any loss, costs, damages, or expenses incurred or sustained by anyone resulting from any interpretation made by any of our officers, agents or employees. These interpretations are also subject to our general terms and conditions set out in our current Price Schedule.

Comments

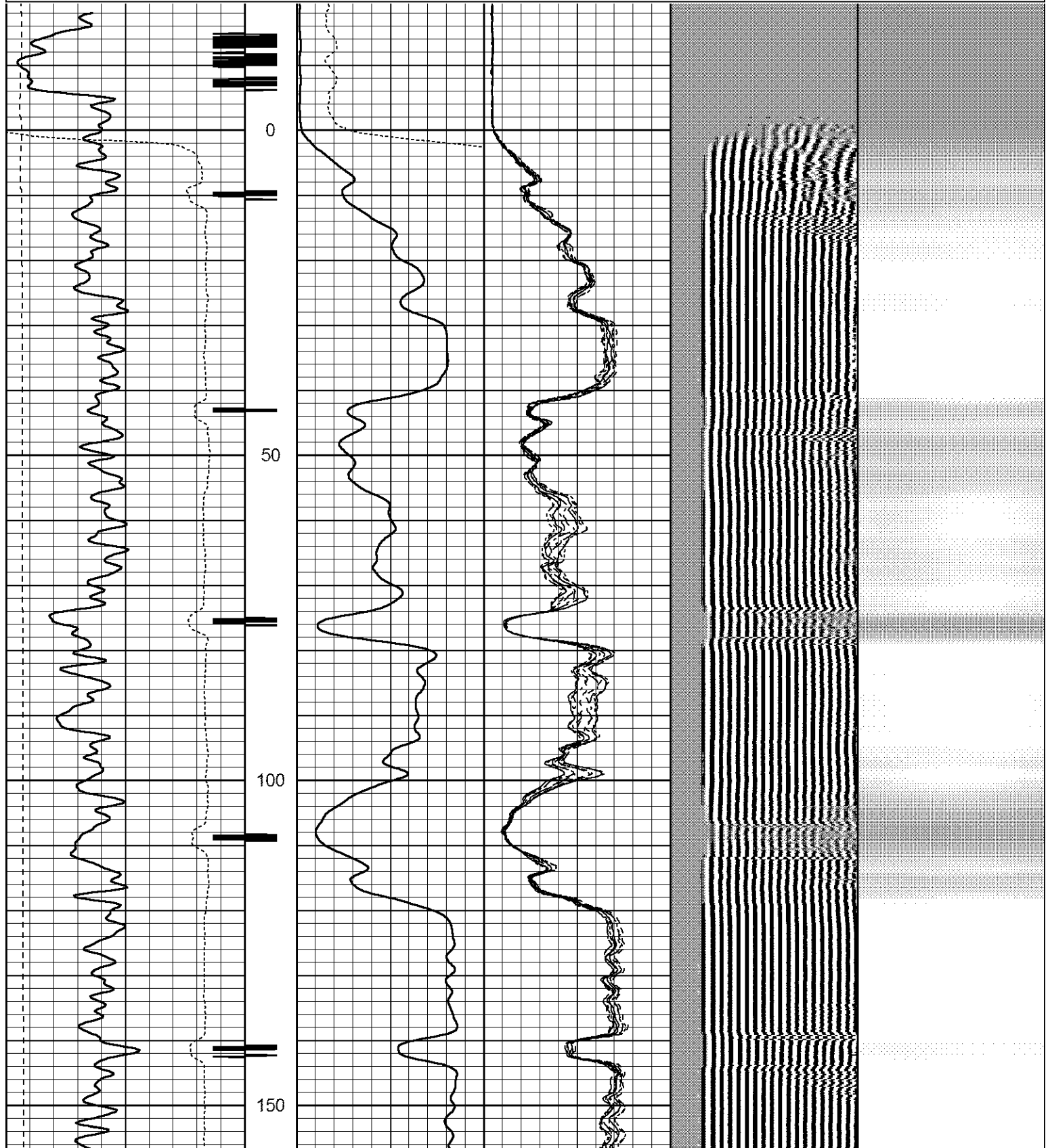
FREE PIPE 82 mV
THANK YOU FOR CHOOSING CUTTERS WIRELINE SERVICE

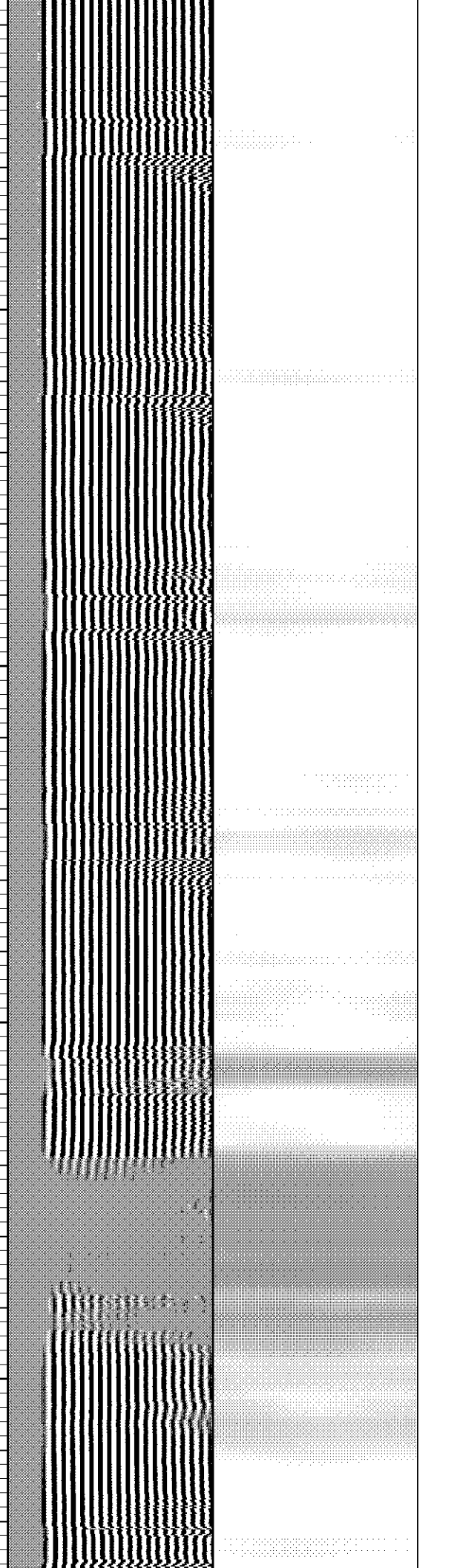
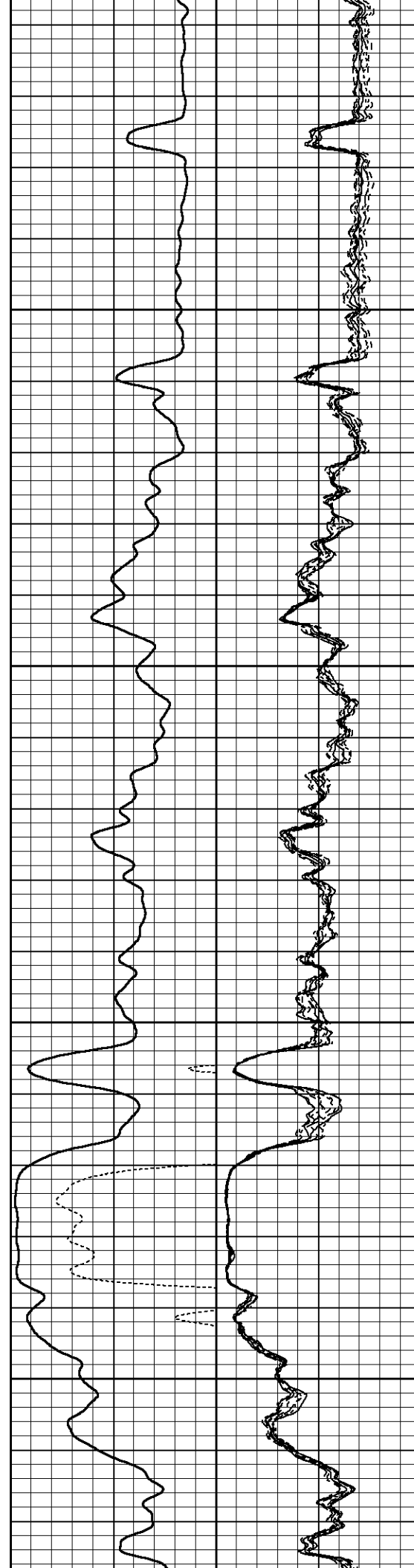
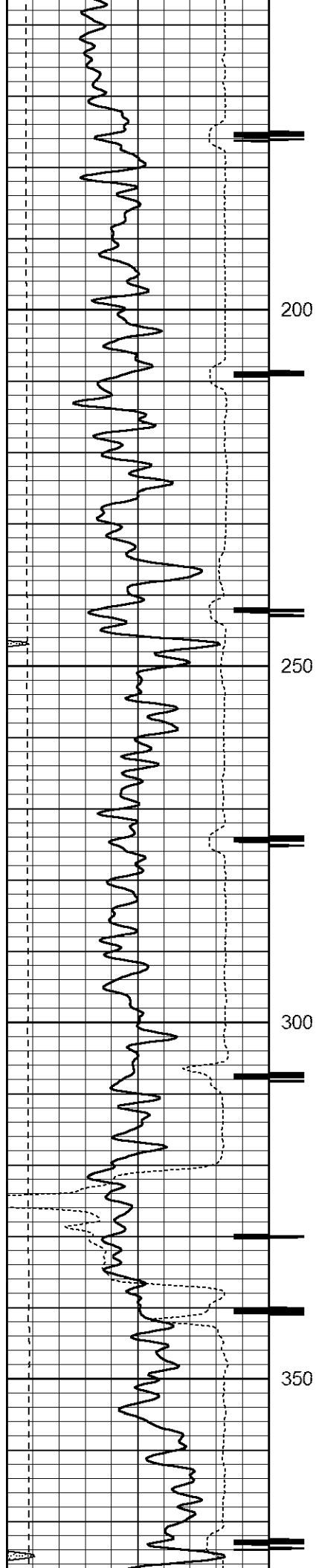
Sensor	Offset (ft)	Schematic	Description	Len (ft)	OD (in)	Wt (lb)
			1.4375CHD Titan Cable Head 1 7/16	1.00	1.44	10.00

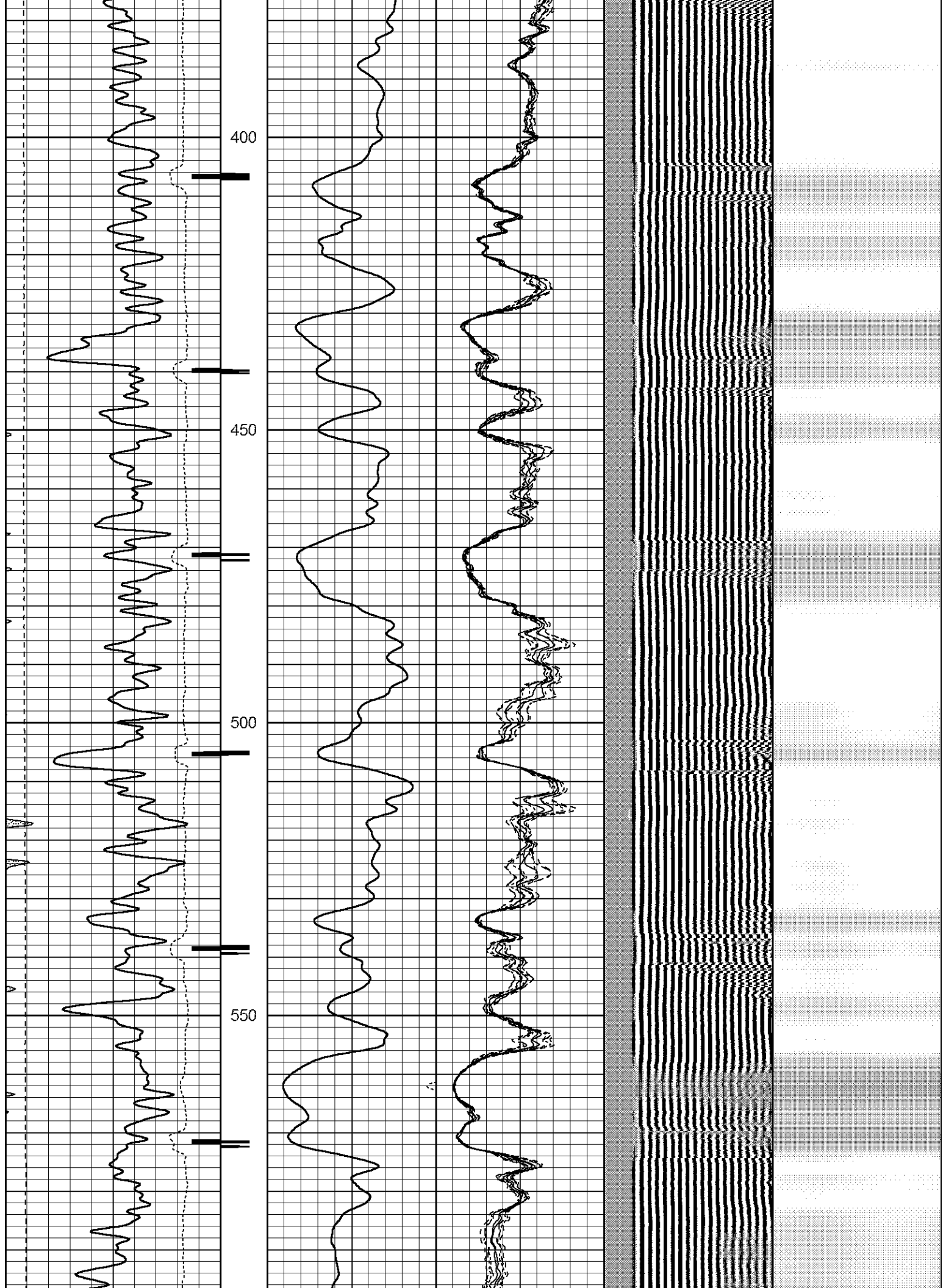
			PTS275	2.83	2.75	
WVF3FT	11.52					
WVFCAL	11.52					
WVFS1	11.52					
WVFS2	11.52					
WVFS3	11.52					
WVFS4	11.52					
WVFS5	11.52					
WVFS6	11.52					
WVFS7	11.52					
WVFS8	11.52					
WVF5FT	10.52					
			RBT-Probe (110217) Probe 2.75" Radii Bond Tool	8.75	2.75	90.00
			PTS275	2.83	2.75	
CCL	3.50					
IntTemp	2.00		GR-275D_INC (110254) 2-3/4" GR-CCL with Inclination	4.50	2.75	
ACCX	1.83					
ACCY	1.83					
ACCZ	1.83					
GR	0.83					
Dataset: anderson_mel_gu_1.db: field/well/run1/pass7 Total Length: 19.92 ft Total Weight: 100.00 lb O.D. 2.75 in						

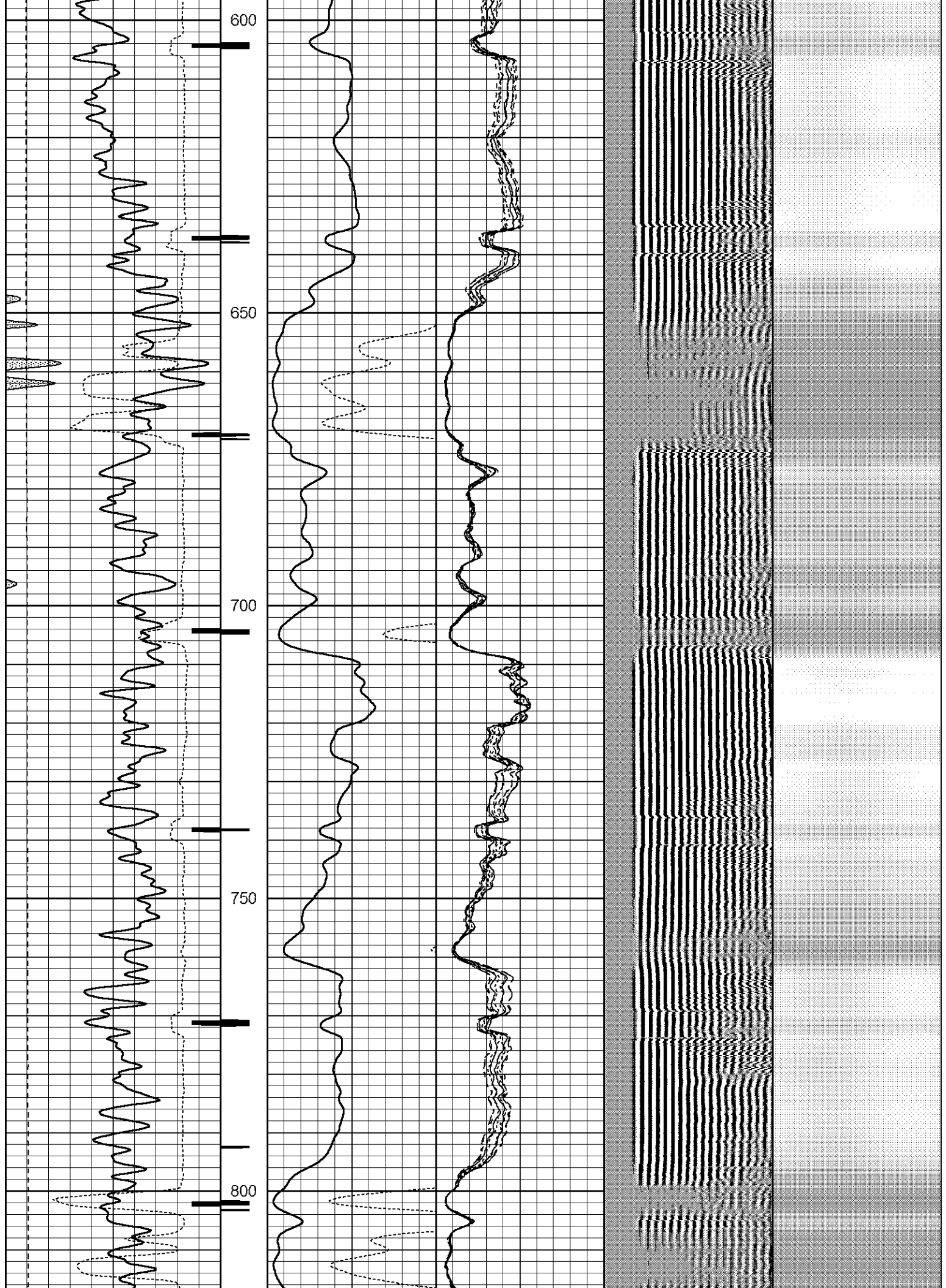
Database File: anderson_mel_gu_1.db
 Dataset Pathname: pass7
 Presentation Format: scbl4_5
 Dataset Creation: Tue Dec 08 12:43:43 2015 by Log 7.0 B1
 Charted by: Depth in Feet scaled 1:240

Charted by:			Depth in Feet scaled 1:240									
325	TT (usec)	225	<div>CCL</div>	0	Amplitude (mV)100	-5	AMPS2	150	200	VDL	1200	Cement Map
0	GR (GAPI)	200		Amplified Amplitude		-5	AMPS3	150	<div><div></div><div></div><div></div><div></div></div> 180			
0	LTEN (lb)	3000		0	(mV)	10	-5	AMPS4	150	Free Pipe Section		
						-5	AMPS5	150				
					-5	AMPS6	150					
					-5	AMPS7	150					
					-5	AMPS8	150					
					-5	AMPS1	150					

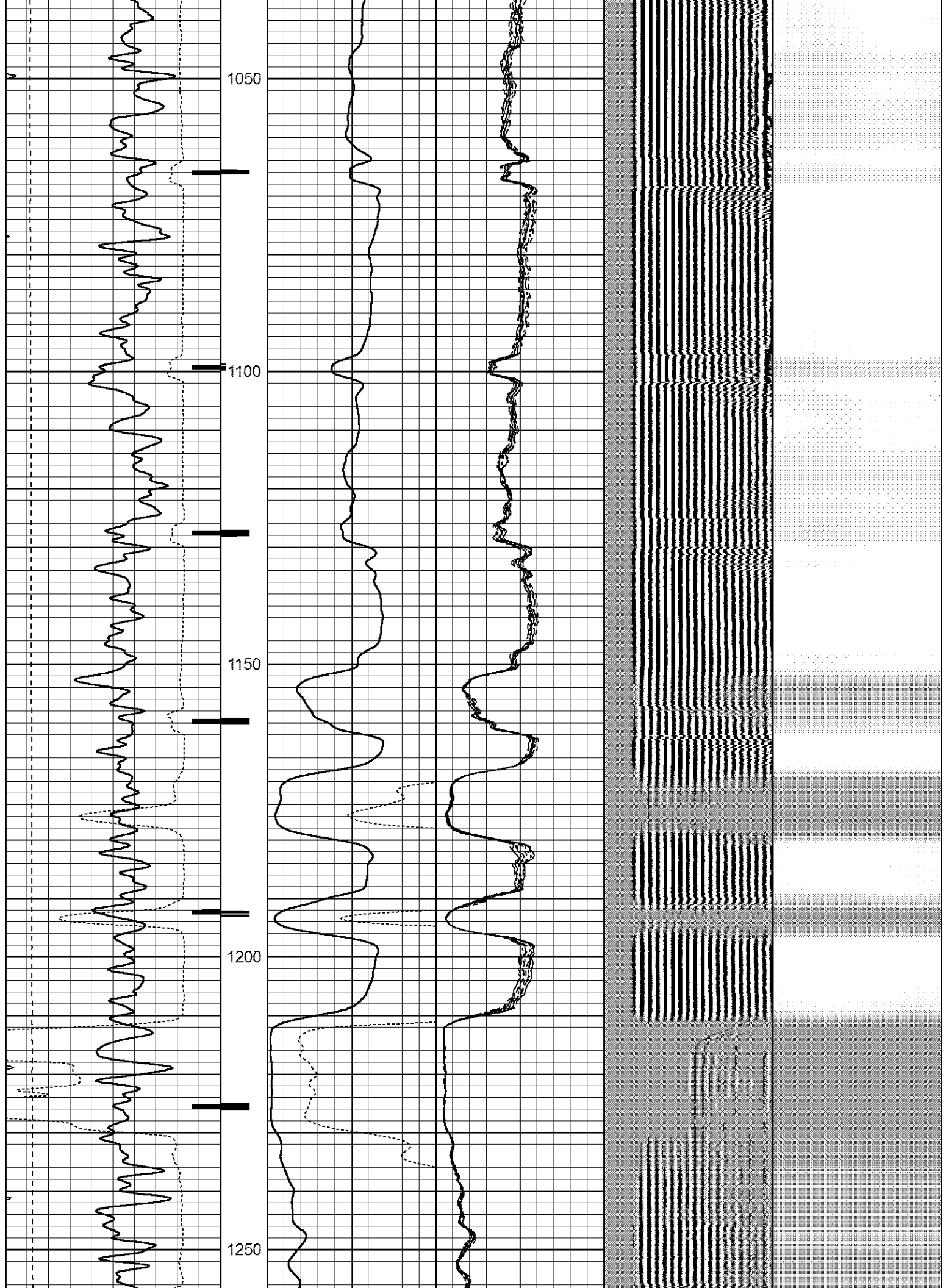


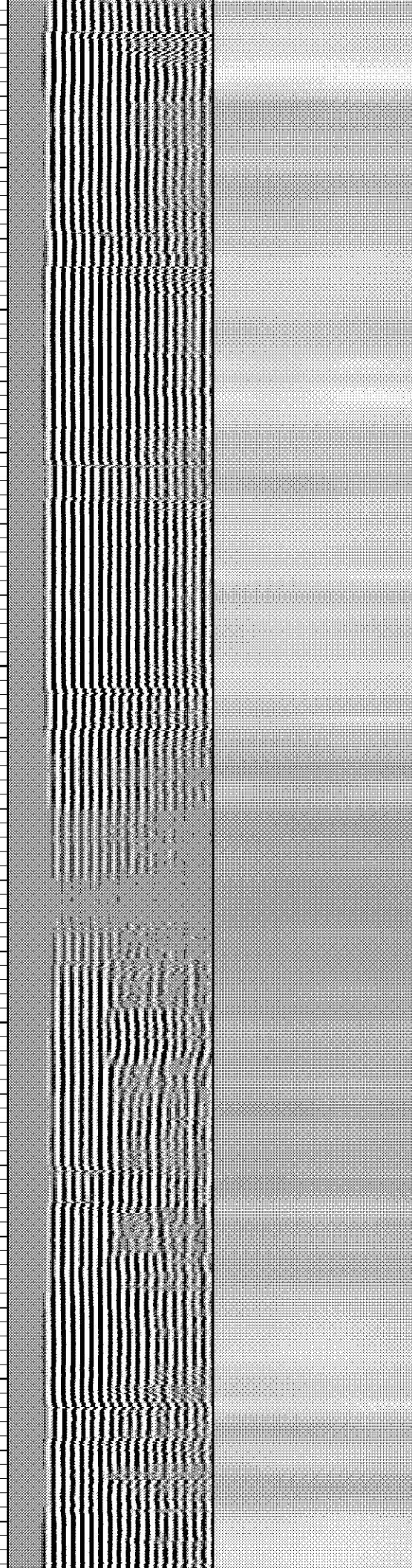
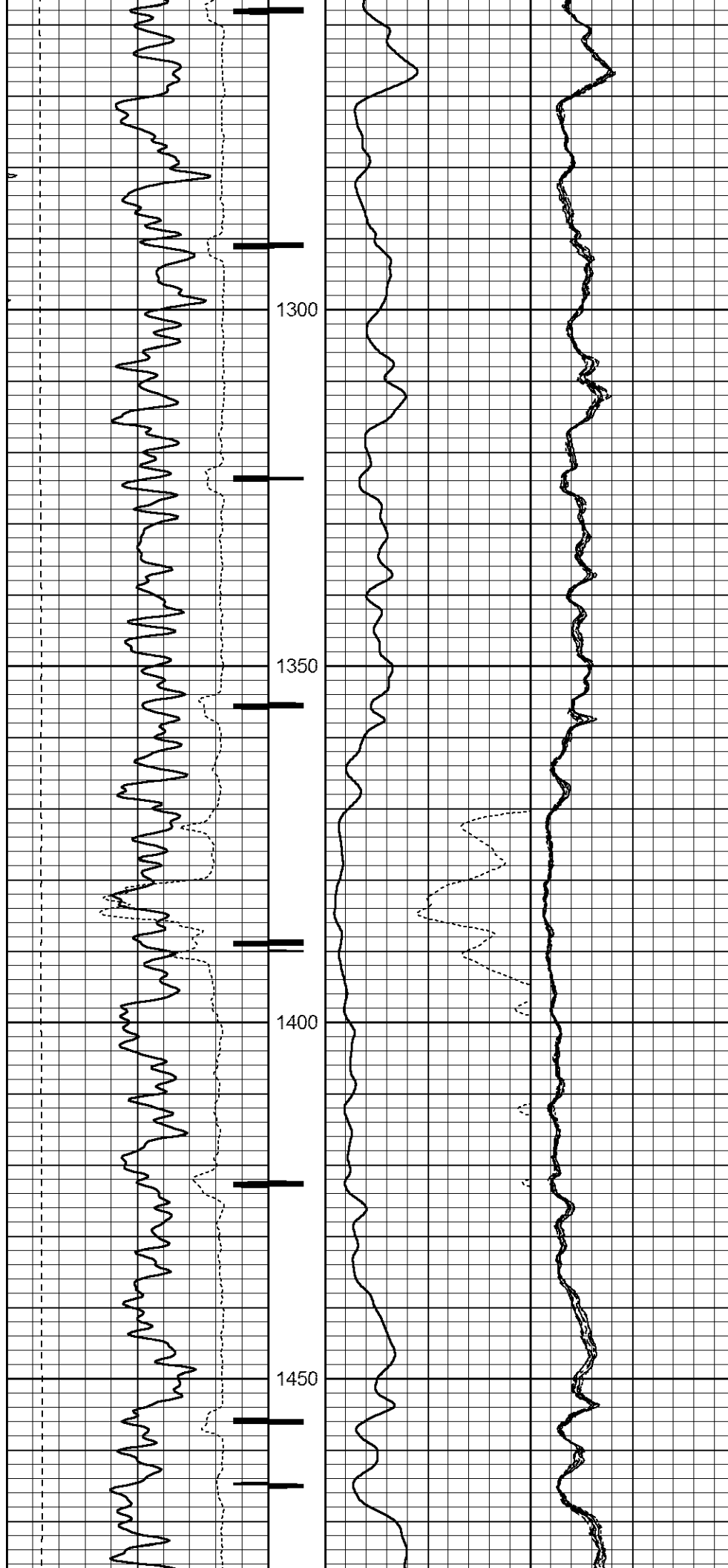


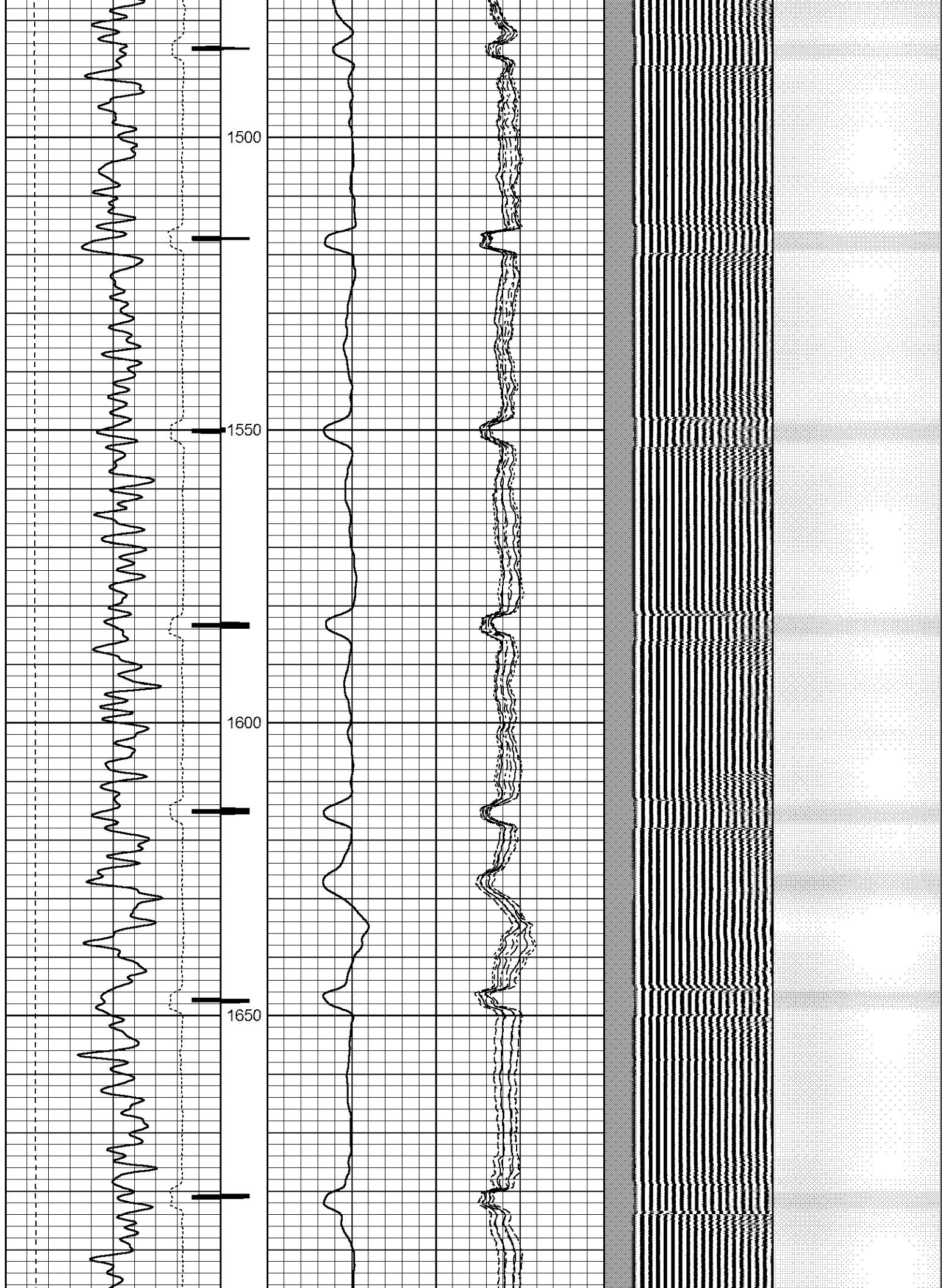




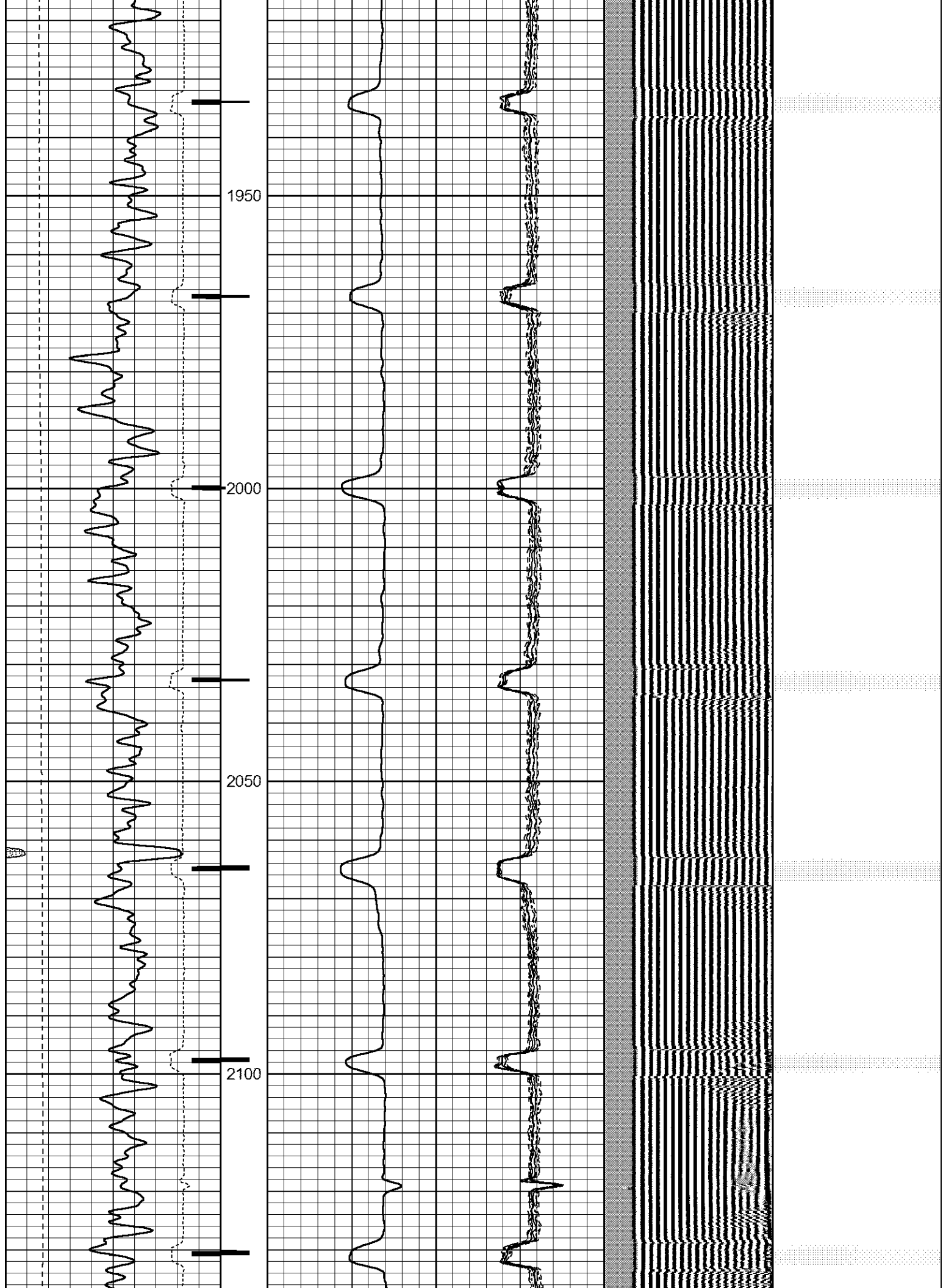


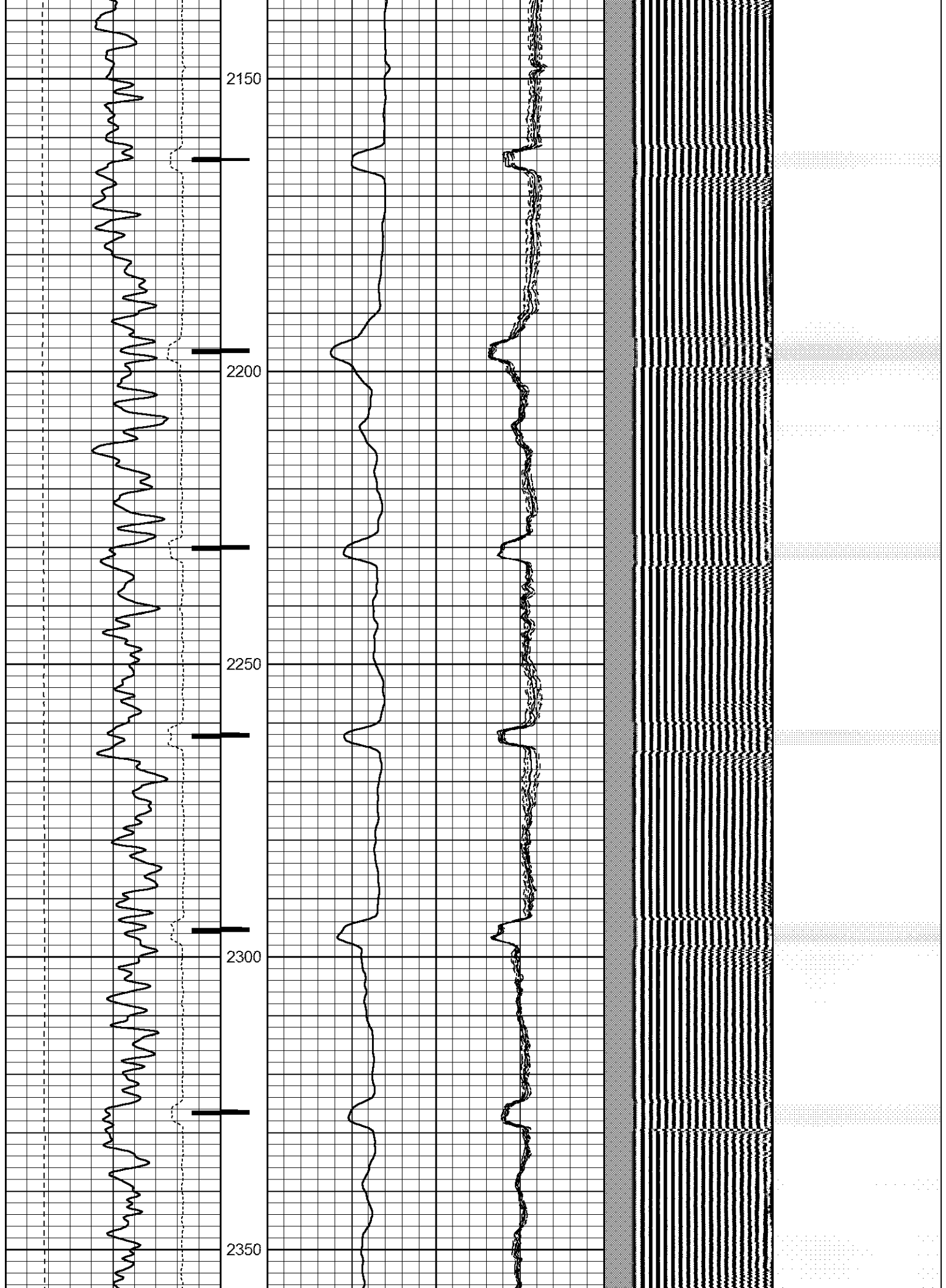


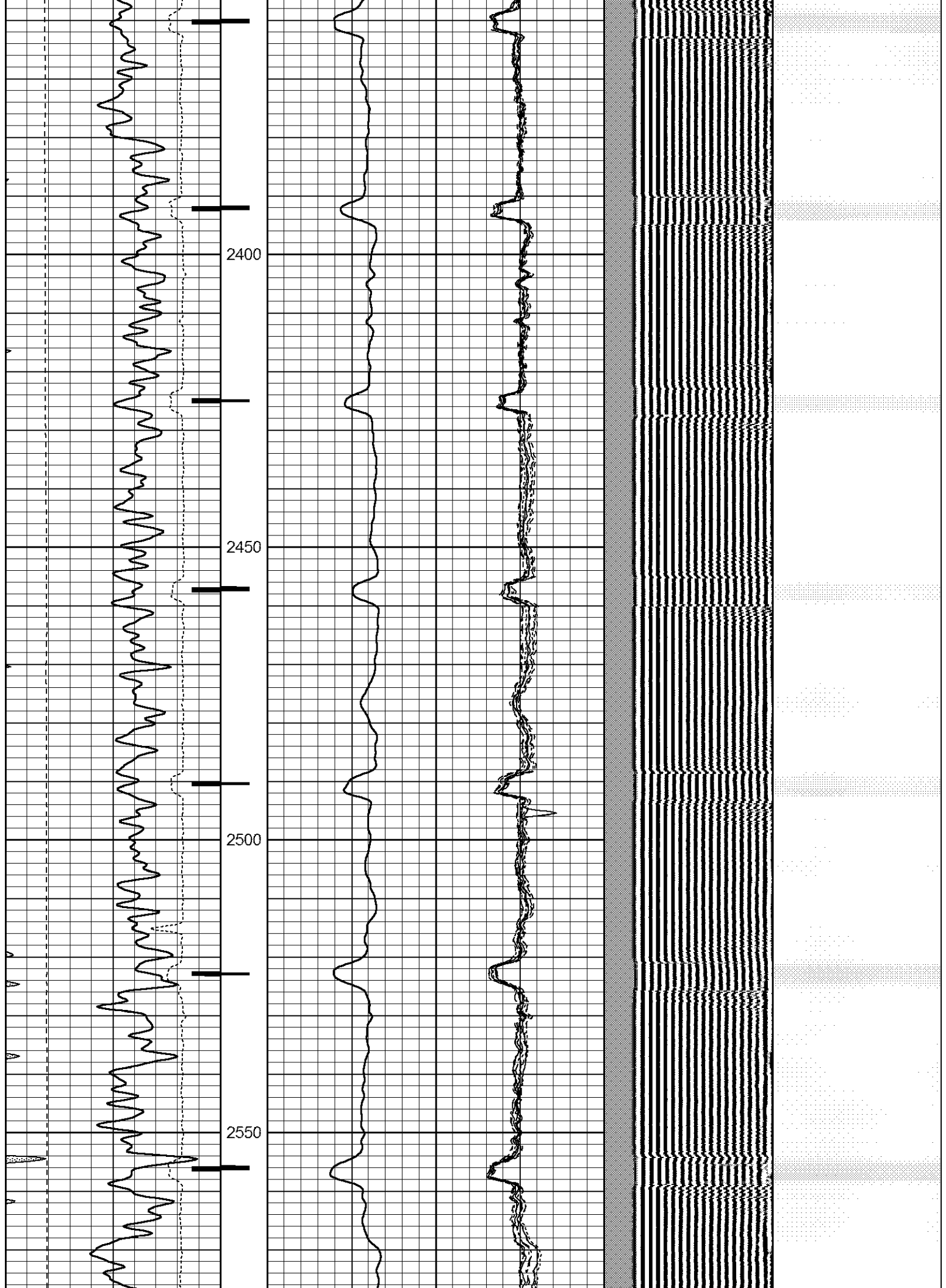


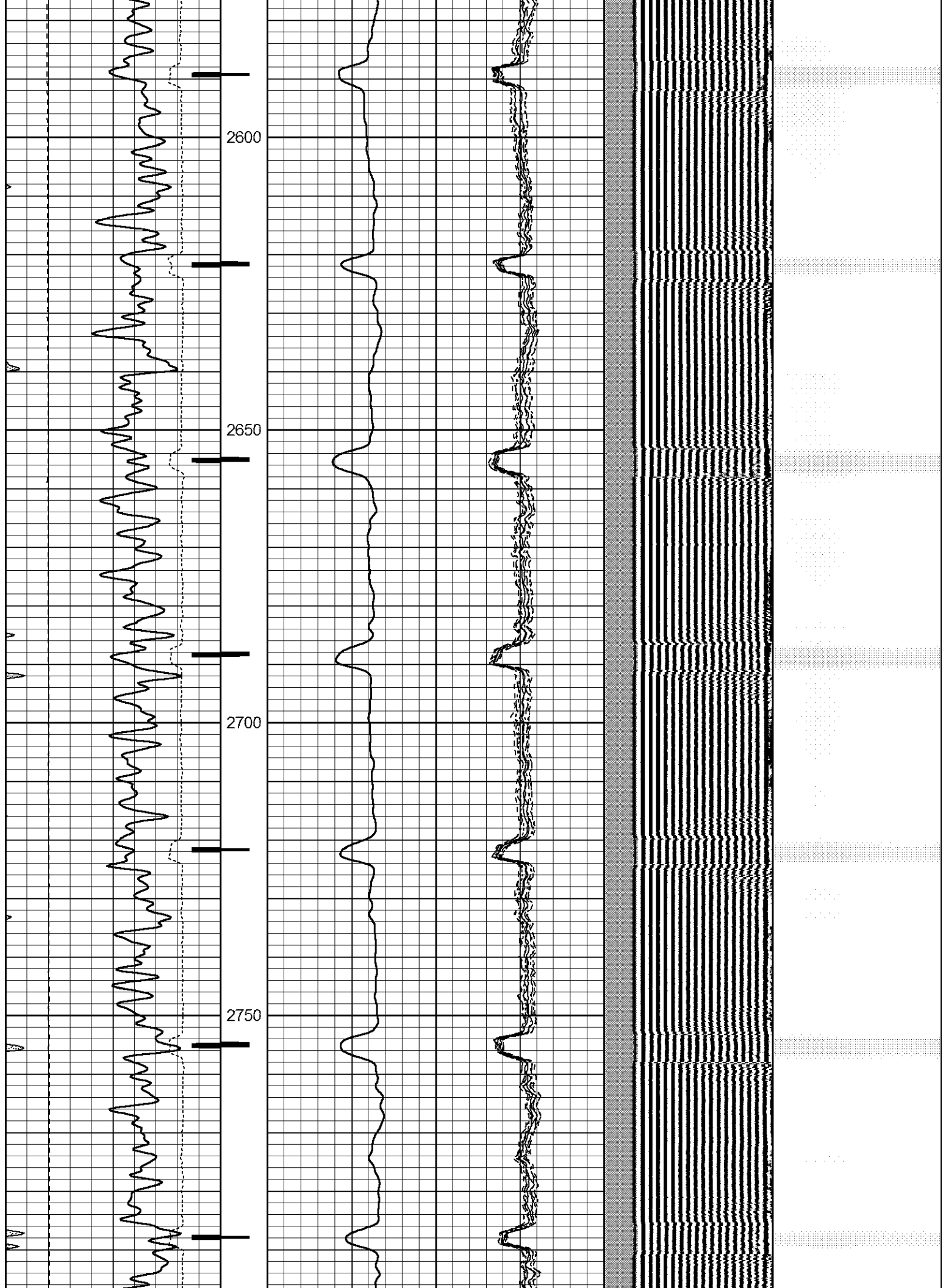


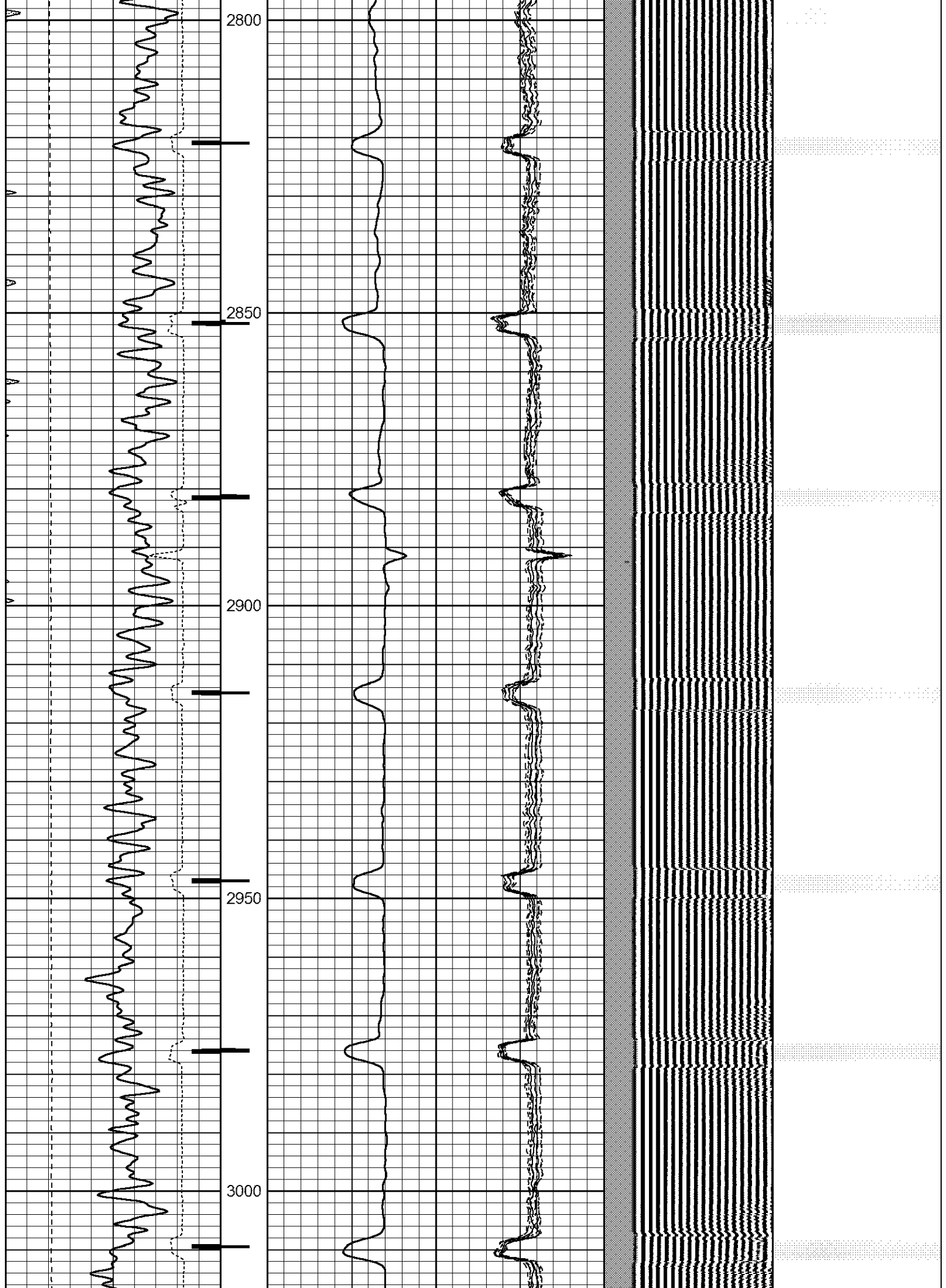


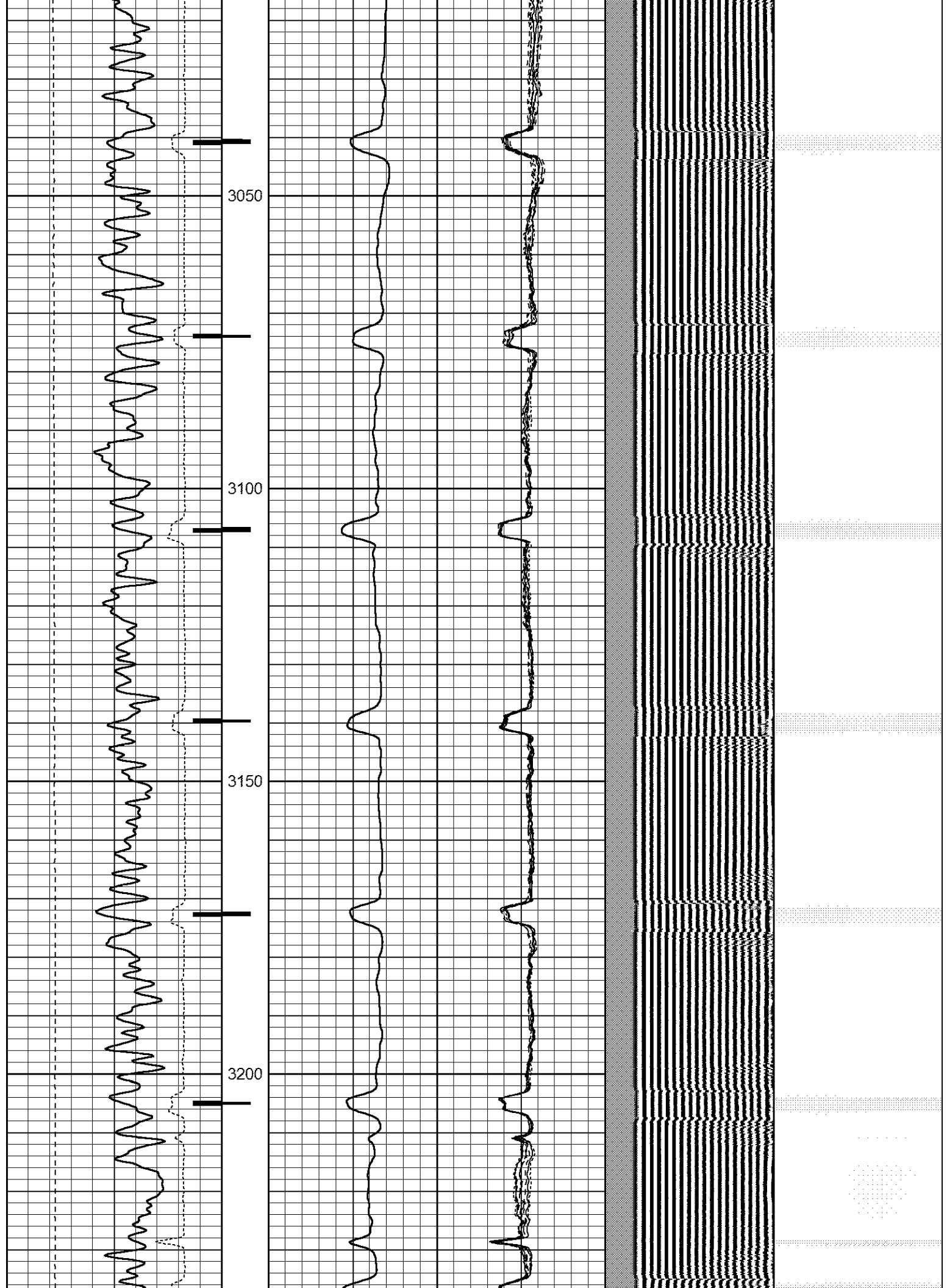


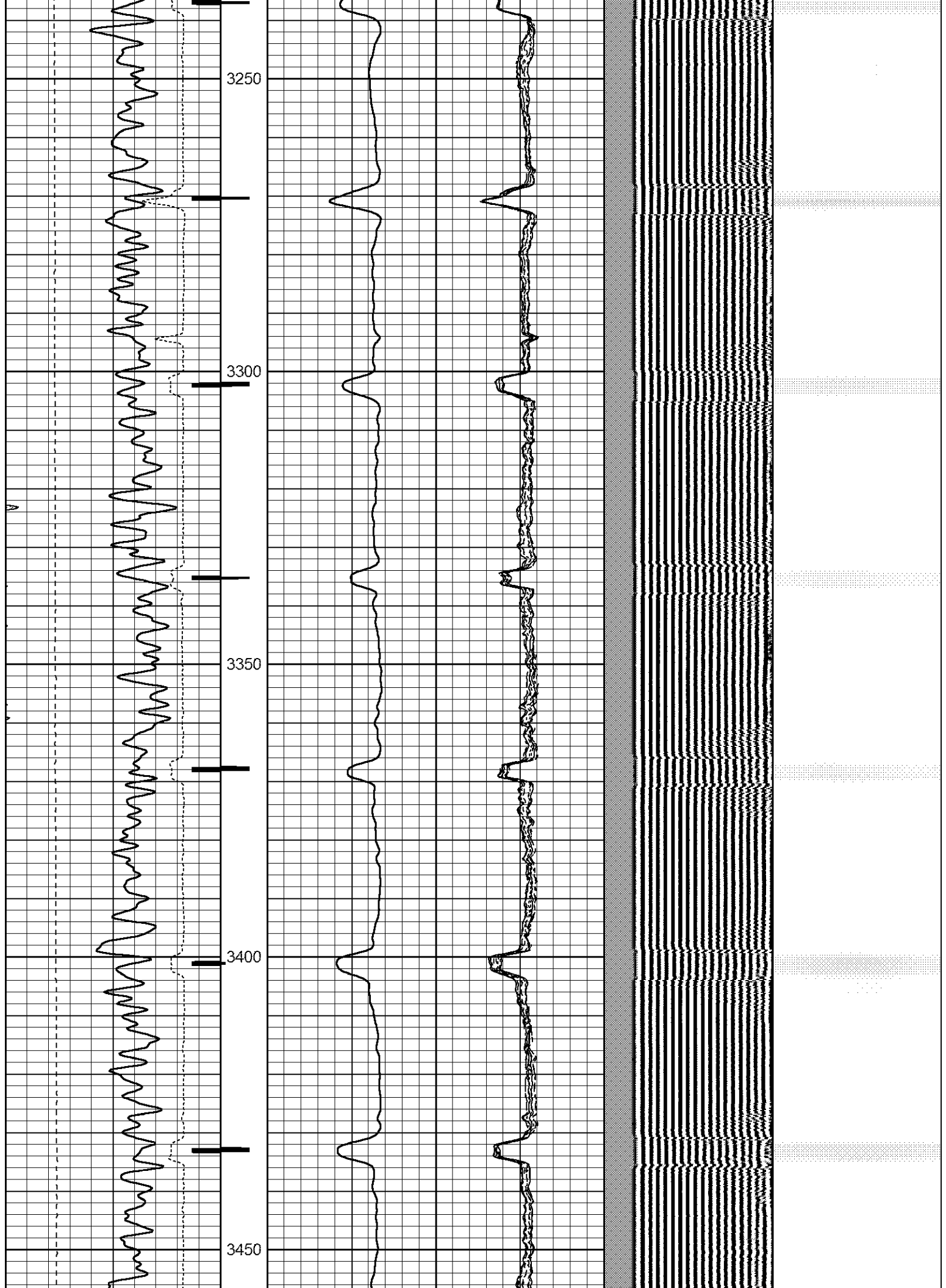


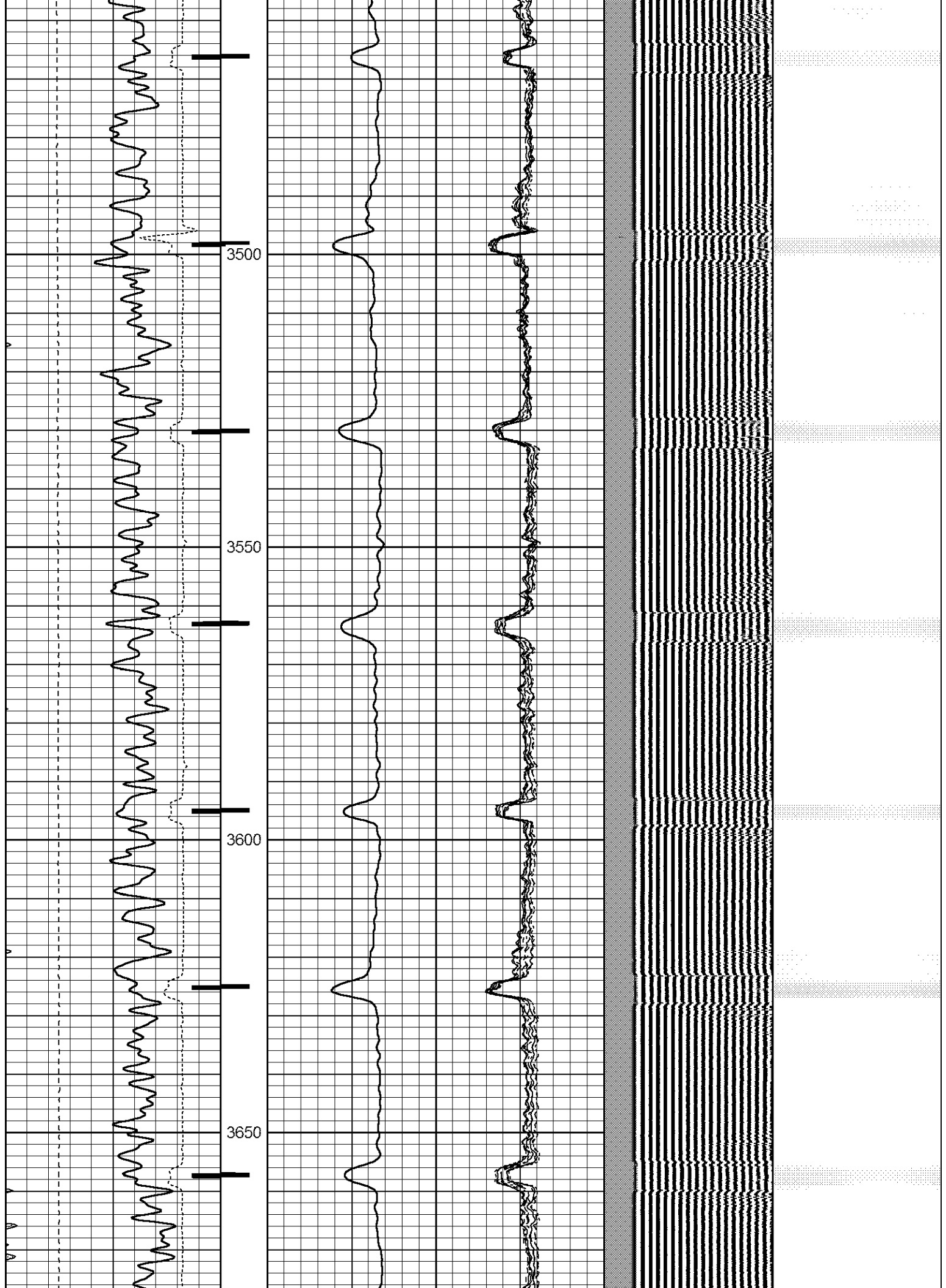


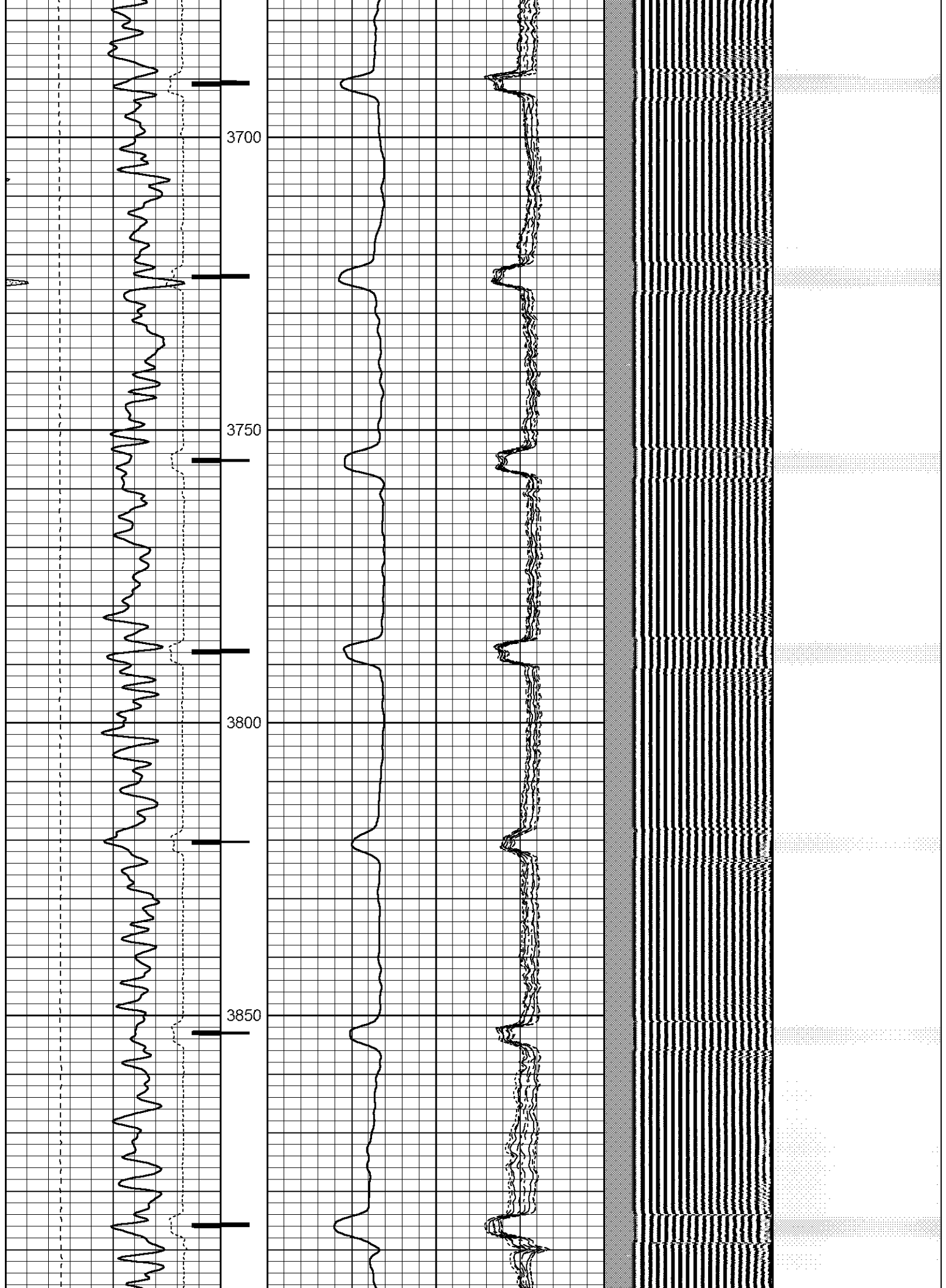






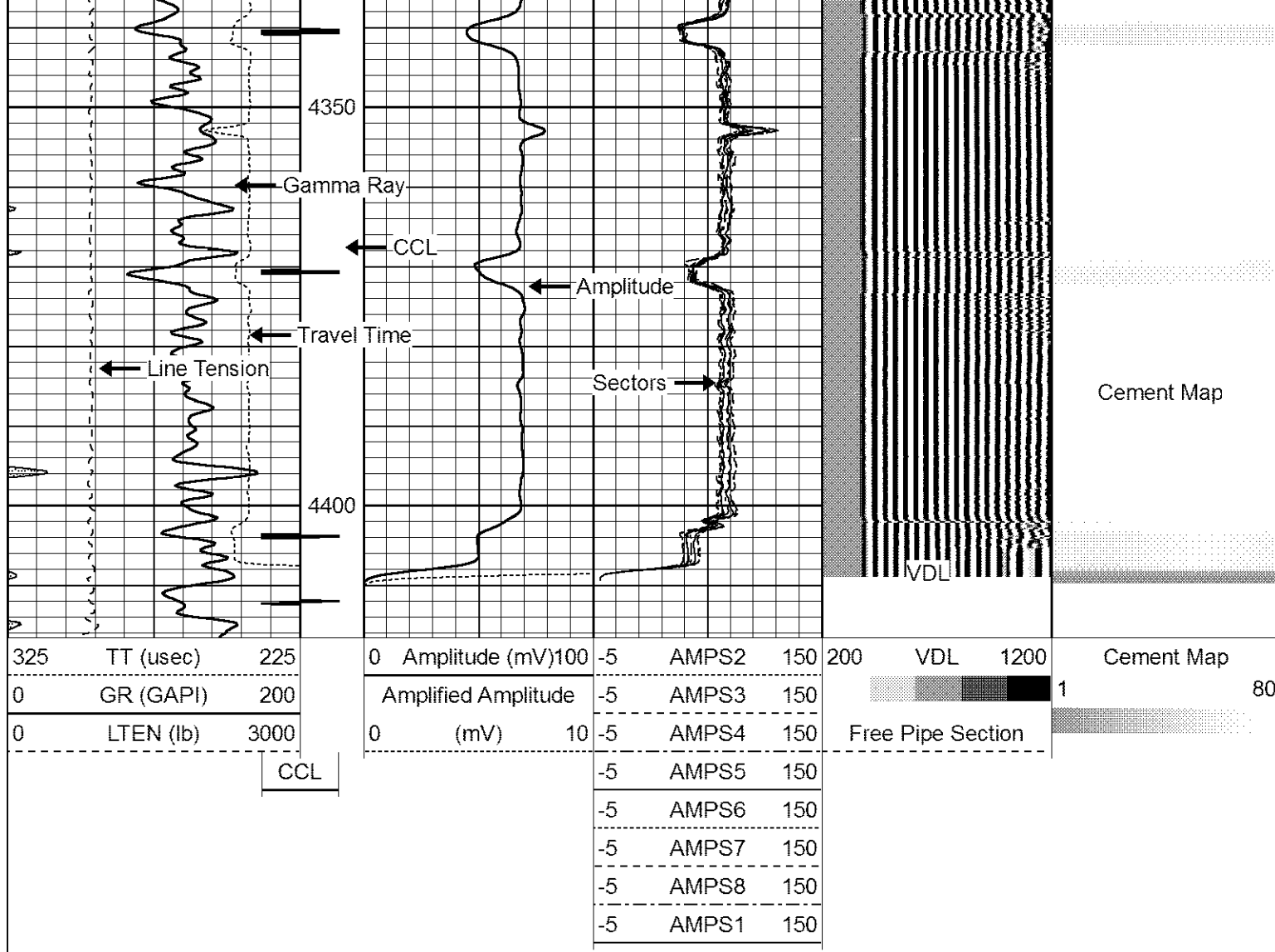






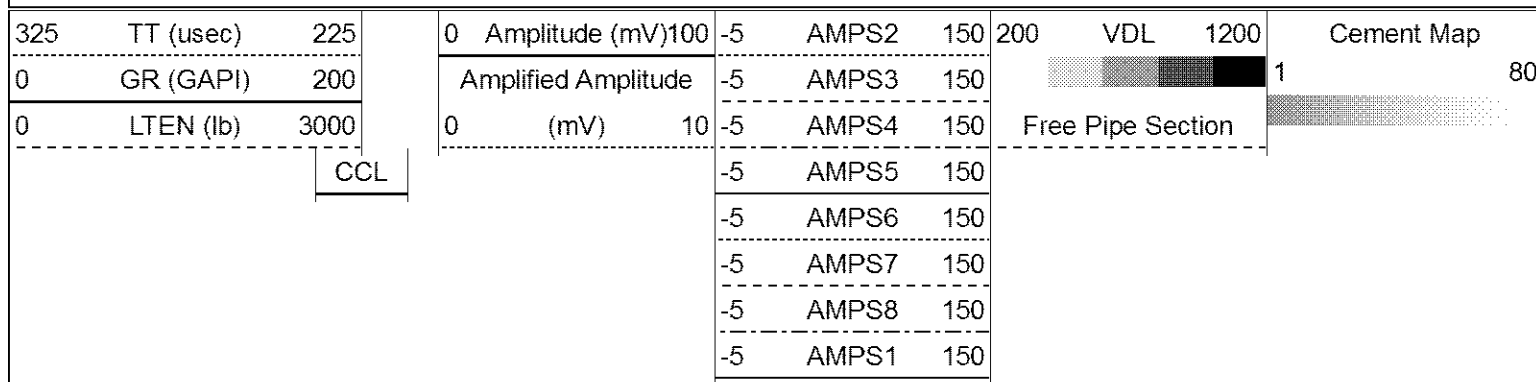


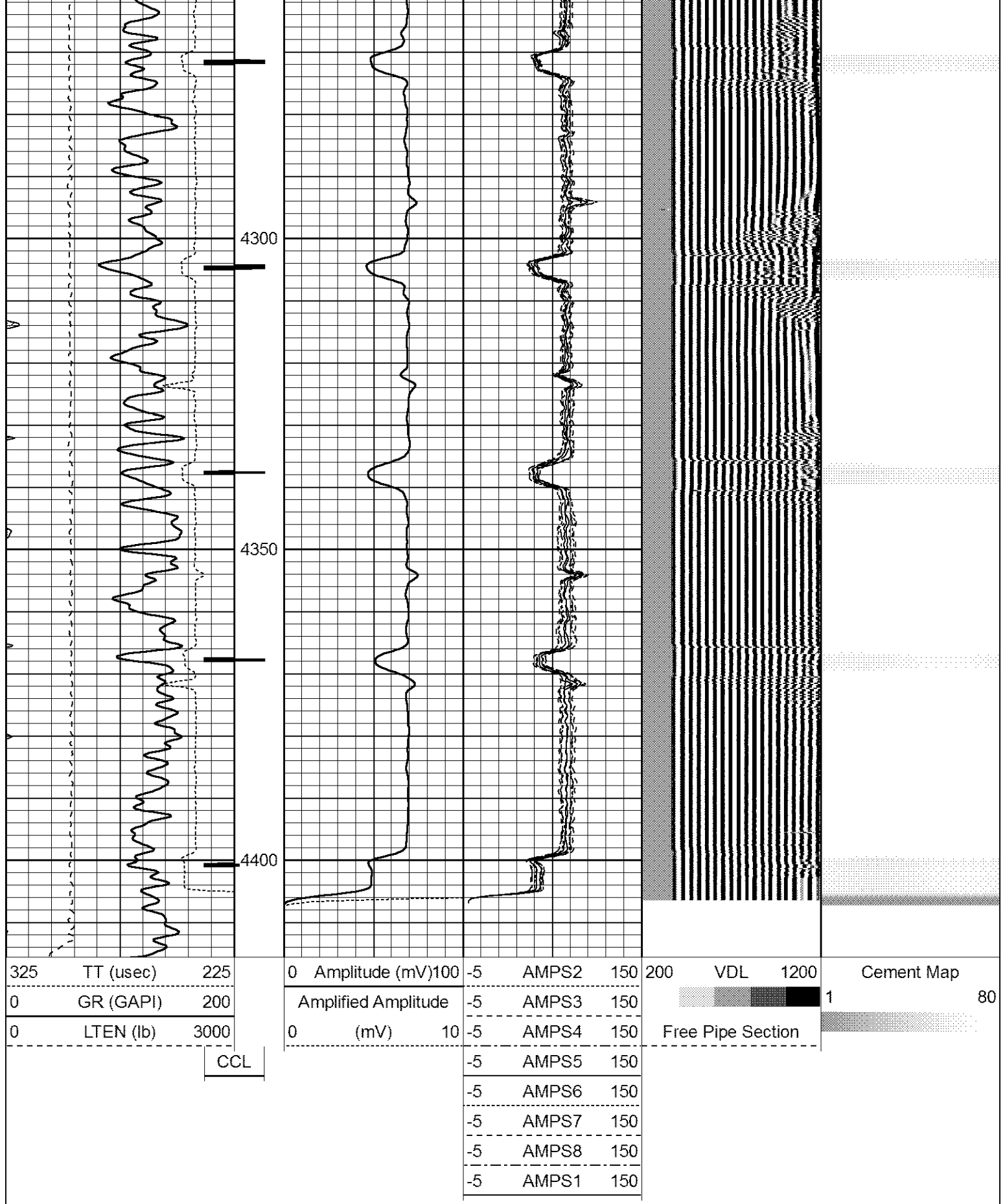




REPEAT PASS

Database File: anderson_mel_gu_1.db
 Dataset Pathname: pass5
 Presentation Format: scbl4_5
 Dataset Creation: Tue Dec 08 12:39:19 2015 by Log 7.0 B1
 Charted by: Depth in Feet scaled 1:240





Company KERR-MCGEE OIL AND GAS
Well ANDERSON MEL GU 1
Field WATTENBERG

County

WELD

State

COLORADO



RADIAL CEMENT BOND LOG