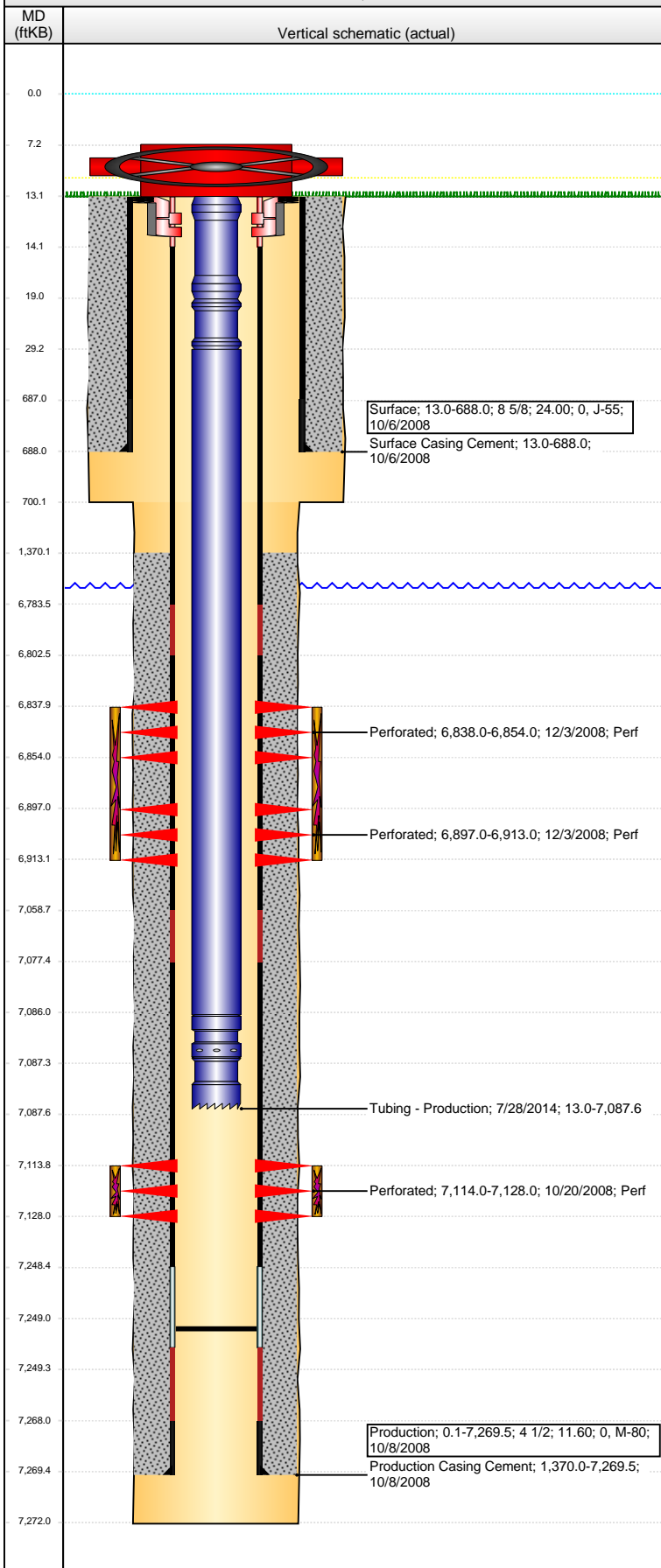


Well Name: HOUNDSKEEPER H01-22

VERTICAL - ORIGINAL HOLE, 12/8/2015 4:26:51 PM



Well Header									
API 05-123-27129		Business Unit DJ BASIN		District 15		Well Config VERTICAL			
Original KB Elevation (ft) 4,884.00		KB - GL / MSL (ftKB) 13.00		Spud Date 10/5/2008		P & A Date			
Comment 318Ae LOCATION									
Directions To Well WCR 49 & 38, WEST ON 38, 0.5 MILE, SOUTH THRU TANK BATTERY 100', THEN EAST AND SOUTHEAST 0.2 MILE, EAST 0.1+ MILE, THEN SOUTH AND SOUTHWEST INTO..									
Congressional Location									
Quarter 1	Quarter 2	Quarter 3 SE	Quarter 4 NE	Section 1	Township 3	Twntshp N... N	Range 65	Rng E/W Dir W	
Bottom Hole Location									
North-South Distance (ft)		From N or S Line		East-West Distance (ft)		From E or W Line			
Plug Back Total Depths									
Date	Depth (ftKB)	Method			Com				
10/8/2008	7,249.1	CASING TALLY							
Wellbore Sections									
Section Des		Size (in)		Act Top, MD (ftKB)		Act Btm, MD (ftKB)			
SURFACE		12 1/4		13.0		700.0			
PRODUCTION		7 7/8		700.0		7,272.0			
Zone Statuses									
Zone Name	Status Date	Status	Fluid Type	Job	Prod Method				
NIOBRARA	12/4/2008	PR		DRILLING/CO...					
CODELL	12/4/2008	PR		DRILLING/CO...					
Casing Strings									
Surface, 688.0ftKB									
Casing Description Surface		Run Date 10/6/2008	OD (in) 8 5/8	Wt/Len (l... 24.00	Grade J-55	Top, MD (ft... 13.0	MD (ftKB) 688.0		
Production, 7,269.5ftKB									
Casing Description Production		Run Date 10/8/2008	OD (in) 4 1/2	Wt/Len (l... 11.60	Grade M-80	Top, MD (ft... 0.1	MD (ftKB) 7,269.5		
Cement									
Description Surface Casing Cement					Top Depth (ftKB) 13.0		Bottom Depth (ftKB) 688.0		
Description Production Casing Cement					Top Depth (ftKB) 1,370.0		Bottom Depth (ftKB) 7,269.5		
Tubing Strings									
Tubing Description Tubing - Production		Run Date 1/29/2009	String... 2 3/8	ID (in) 1.995	Wt (lb/ft) 4.70	Grade J-55	Len (ft) 7,082.51	Set De...	
Tubing Description Tubing - Production		Run Date 7/28/2014	String... 2 3/8	ID (in) 1.995	Wt (lb/ft) 4.70	Grade J-55	Len (ft) 7,074.56	Set De...	
Tubing Components									
Item Des		OD (in)	Wt (lb/ft)	Grade	Jts	Len (ft)	Btm (ftKB)	Btm (TVD) (ftKB)	
Pup Joint		2 3/8	4.70	J-55	1	6.05	19.0		
Pup Joint		2 3/8	4.70	J-55	1	10.08	29.1		
EUE 8rd Tubing		2 3/8	4.70	J-55	229	7,056.85	7,086.0		
Pump Seating Nipple		2 3/8	4.70	N-80	1	1.13	7,087.1		
Notched collar		2 3/8	4.70	J-55	1	0.45	7,087.6		
Perforation Data									
Zone		Bnch/St g	Entered Shot Total	Top (ftKB)		Btm (ftKB)		Date	
NIOBRARA, ORIGINAL HOLE		A	32	6,838.00		6,854.00		12/3/2008	
NIOBRARA, ORIGINAL HOLE		B	32	6,897.00		6,913.00		12/3/2008	
CODELL, ORIGINAL HOLE			56	7,114.00		7,128.00		10/20/2008	

Well Name: HOUNDSKEEPER H01-22

VERTICAL - ORIGINAL HOLE, 12/8/2015 4:26:53 PM

Stimulations & Treatments

Date	Zone	Primary Job Type
12/3/2008	CODELL, ORIGINAL HOLE	DRILLING/COMPLETION - ORIGINAL

Technical Result	Tech Result Details	Tech Result Note
Success	According to Plan	

Comment
(CODELL): REVERSE STEP RATE RESULTS: PERFS OPEN - 19. NWB FRIC. - 426 PSI. PERF FRIC. - 89 PSI. ISIP - 3031 PSI. INC RATE T/ 22 BPM DUE TO HIGH LO. POST ISIP - 3848 PSI. TREATMENT WENT WELL. NOLTE FLAT.

Date	Zone	Primary Job Type
12/3/2008	NIOBRARA, ORIGINAL HOLE	DRILLING/COMPLETION - ORIGINAL

Technical Result	Tech Result Details	Tech Result Note
Success	According to Plan	

Comment
(NIOBRARA): ISIP - 3796 PSI. TREATMENT WENT WELL. POST ISIP - 3773 PSI. AVG NOLTE - 0.07.

Other In Hole

Run Date	Des	OD (in)	Top (ftKB)	Btm (ftKB)

Logs

Date	Type	Top, MD (ftKB)	Btm, MD (ftKB)
10/8/2008	Caliper/Comp. Density/Neutron/GR/SP/ML	2,650.0	7,279.0
10/8/2008	DIL/GR/SP/Caliper	688.0	7,279.0
10/15/2008	CBL/CCL/GR	1,150.0	7,200.0
1/26/2011	GYRO	13.0	7,000.0

