



December 1<sup>st</sup> 2015

Mr. Matt Lepore, Director  
Colorado Oil and Gas Conservation Commission  
The Chancery Building  
1120 Lincoln Street, Suite 801  
Denver, CO 80203

RE: Anschutz Equus Farms 4-62-9-0108B2B (doc#400936332)  
Township 4 North, Range 62 West, 6<sup>th</sup> P.M.  
Section 9: NWNW (surface location)  
Weld County, Colorado

Proposed Wellbore Unit (640 acres):

Township 4 North, Range 62 West, 6<sup>th</sup> P.M.  
Section 3: S2S2  
Section 4: S2S2  
Section 9: N2N2  
Section 10: N2N2

Dear Mr. Lepore:

Bill Barrett Corporation ("BBC") is planning to drill the captioned boundary well in accordance with the provisions of COGCC 318A.e.

BBC's wellbore spacing unit consists of Section 9-N2N2, Section 10-N2N2, Section 3-S2S2, Section 4-S2S2 of T4N-62W, creating the above referenced spacing unit in which we will target the Niobrara formation. I certify that all of the owners within the proposed wellbore spacing unit were noticed and no objections were received.

Enclosed is a copy of the following document to assist you in your review and approval of BBC's proposed changes for the captioned well.

- Plat illustrating the proposed wellbore spacing unit on existing location plat

Thank you for your attention to the enclosed. BBC respectfully requests that the COGCC review the enclosed information and approve the proposed changes for the captioned well.

Sincerely,

A handwritten signature in blue ink, appearing to read 'Mary Pobuda', is written over the word 'Sincerely,'.

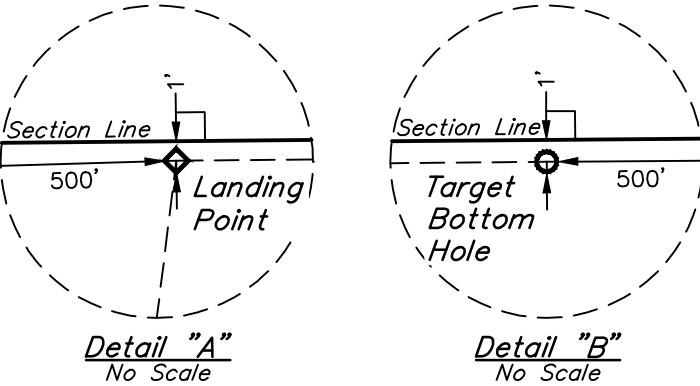
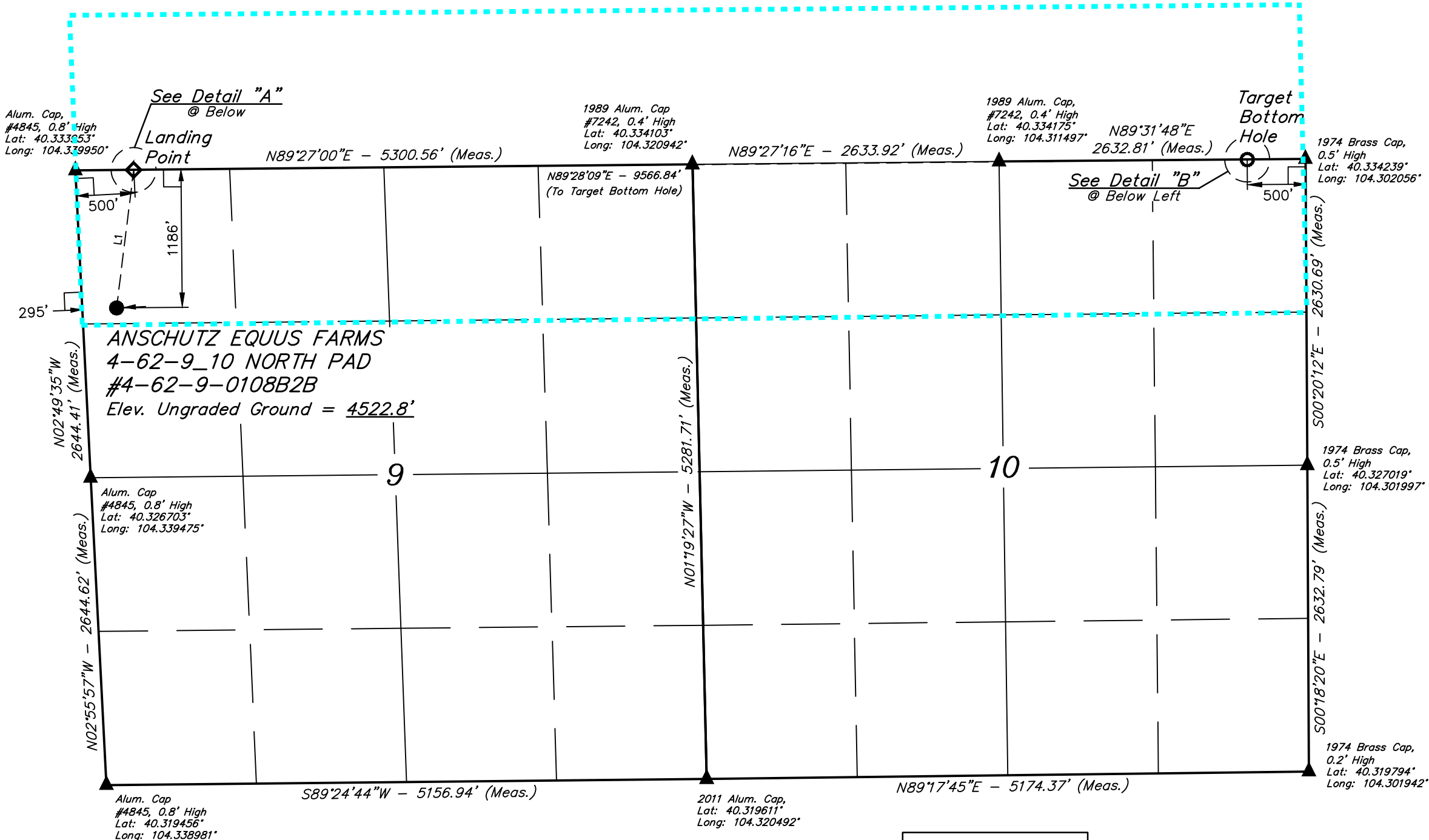
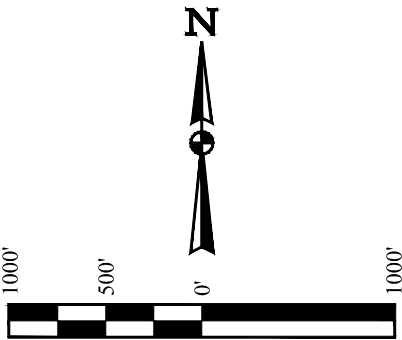
Mary Pobuda  
Permit Analyst

1099 18<sup>th</sup> Street, Suite 2300  
Denver, CO 80202  
P 303.293.9100  
F 303.291.0420

T4N, R62W, 6th P.M.

**BILL BARRETT CORPORATION**  
**ANSCHUTZ EQUUS FARMS 4-62-9\_10 NORTH PAD**  
#4-62-9-0108B2B  
NW 1/4 NW 1/4, SECTION 9, T4N, R62W, 6th P.M.  
WELD COUNTY, COLORADO  
BASIS OF BEARINGS  
BASIS OF BEARINGS IS A G.P.S. OBSERVATION  
BASIS OF ELEVATION

SPOT ELEVATION LOCATED AT THE NORTHEAST CORNER OF SECTION 24, T5N, R62W, 6th P.M. TAKEN FROM THE POINT OF ROCKS, QUADRANGLE, COLORADO, WELD COUNTY, 7.5 MINUTE QUAD (TOPOGRAPHIC MAP) PUBLISHED BY THE UNITED STATES DEPARTMENT OF THE INTERIOR, GEOLOGICAL SURVEY. SAID ELEVATION IS MARKED AS BEING 4530 FEET.



- LEGEND:**
- = 90° SYMBOL
  - = PROPOSED WELLHEAD.
  - ◆ = LANDING POINT.
  - = TARGET BOTTOM HOLE.
  - ▲ = SECTION CORNERS LOCATED.

LINE TABLE		
LINE	DIRECTION	LENGTH
L1	N07°03'46"E	1195.29'

PDOP = 1.2

NAD 83 (TARGET BOTTOM HOLE)	NAD 83 (LANDING POINT)	NAD 83 (SURFACE LOCATION)
LATITUDE = 40°20'03.21" (40.334225)	LATITUDE = 40°20'02.27" (40.333964)	LATITUDE = 40°19'50.55" (40.330708)
LONGITUDE = 104°18'13.86" (104.303850)	LONGITUDE = 104°20'17.36" (104.338156)	LONGITUDE = 104°20'19.24" (104.338678)
NAD 27 (TARGET BOTTOM HOLE)	NAD 27 (LANDING POINT)	NAD 27 (SURFACE LOCATION)
LATITUDE = 40°20'03.28" (40.334244)	LATITUDE = 40°20'02.34" (40.333983)	LATITUDE = 40°19'50.62" (40.330728)
LONGITUDE = 104°18'12.03" (104.303342)	LONGITUDE = 104°20'15.53" (104.337647)	LONGITUDE = 104°20'17.41" (104.338169)
STATE PLANE NAD 83 (COLORADO NORTH)	STATE PLANE NAD 83 (COLORADO NORTH)	STATE PLANE NAD 83 (COLORADO NORTH)
N: 1366847.84 E: 3333453.55	N: 1366625.67 E: 3323891.79	N: 1365437.82 E: 3323761.44
STATE PLANE NAD 27 (COLORADO NORTH)	STATE PLANE NAD 27 (COLORADO NORTH)	STATE PLANE NAD 27 (COLORADO NORTH)
N: 366850.05 E: 2333603.70	N: 366627.85 E: 2324041.93	N: 365440.03 E: 2323911.59

CERTIFICATE  
THIS IS TO CERTIFY THAT THE ABOVE PLAT WAS PREPARED FROM FIELD NOTES OF ACTUAL SURVEYS MADE BY ME OR UNDER MY SUPERVISION AND THAT THE SAME ARE TRUE AND CORRECT TO THE BEST OF MY KNOWLEDGE AND BELIEF.



**UINTAH**  
ENGINEERING & LAND SURVEYING

**UELS, LLC**  
Corporate Office \* 85 South 200 East  
Vernal, UT 84078 \* (435) 789-1017

SURVEYED BY: DALLAS NIELSEN, B.C.		DATE: 03-25-15
DRAWN BY: J.S.		DATE DRAWN: 03-27-15
SCALE: 1" = 1000'		REVISED: 10-21-15 C.C.

**WELL LOCATION PLAT**