

# Mezintel

## Measured Depth Log

5"=100ft  
Feet

Oil Co: **Bonanza Creek Energy Inc.**  
Well Name: **State Pronghorn 11-14-16HNB**  
LSD:  
State/Prov: **Colorado**  
Country: **USA**  
Job #: **2009-346**

Oil Company: **Bonanza Creek Energy Inc.**  
Well Name: **State Pronghorn 11-14-16HNB**  
LSD:  
State/Prov: **Colorado**  
Country: **USA**  
Job #: **2009-346**  
Drilling Co. **Cade**  
Rig #: **21**  
Co Rep 1:  
Co Rep 2:  
Geologist 1:  
Geologist 2:  
DD 1: **Jeremy**  
DD 2: **Mark**  
MWD 1: **David Keele**  
MWD 2: **Clay Crawford**  
MWD Kit: **12**  
Well Lic:  
API/UWI:  
AFE #:

Casing Depths			MD	Depth	Date			KB:	0	
Surface: 480			Start: 8500.00	6/29/2014					GL:	0
Intermediate:			End: 10713.95						DF:	0
Run #	Hole Size (in)	Gamma Offset	Survey Offset	Depth Start	Depth End	Date Start	Date End			
01	8.75	37.00	42.00	0.00	5656.00	Jun 30, 14	Jul 02, 14			
02	8.75	35.00	40.00	5656.00	6546.50	Jul 02, 14	Jul 04, 14			
03		44.00	49.00	6546.50	10758.00	Jul 05, 14	Jul 07, 14			

Total Directional Services uses its best efforts to provide customers with accurate information on services performed but will not be held liable or responsible for accuracy of information or interpretation.

Notes:

Printed: Jul 07/2014 21:55

Client: **Bonanza Creek Energy Inc.**

Well Name: **State Pronghorn 11-14-16HNB**

API/UWI:

Well Lic:

Surface LSD:

State/Prov: **Colorado**

Country: **USA**

Job #: **2009-346**

MWD Kit: **12**

KB: **0**

GL: **0**

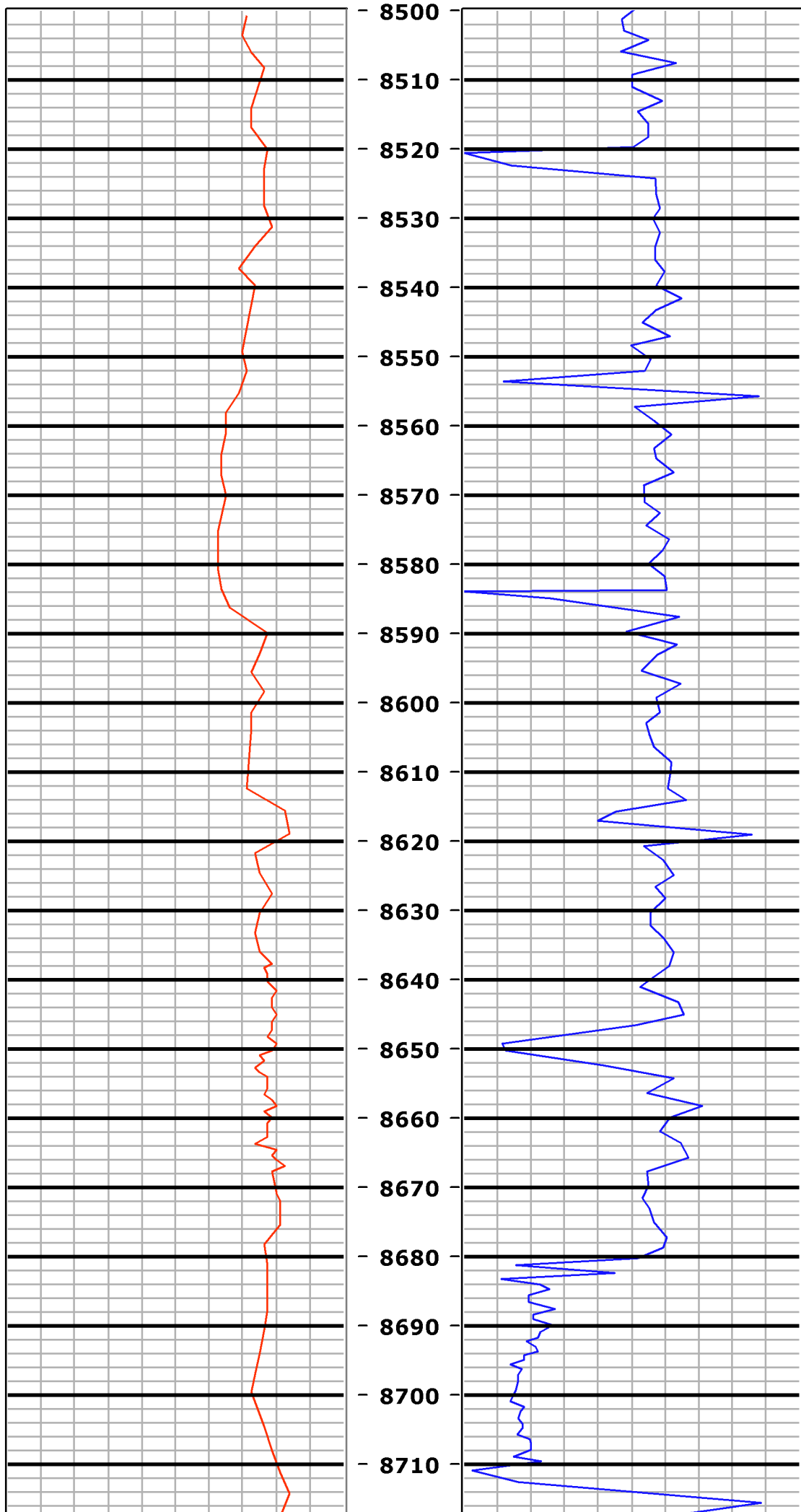
DF: **0**

# Mezintel

**0** Gamma [AAPI] **200**  
**200** Gamma [AAPI] **300**

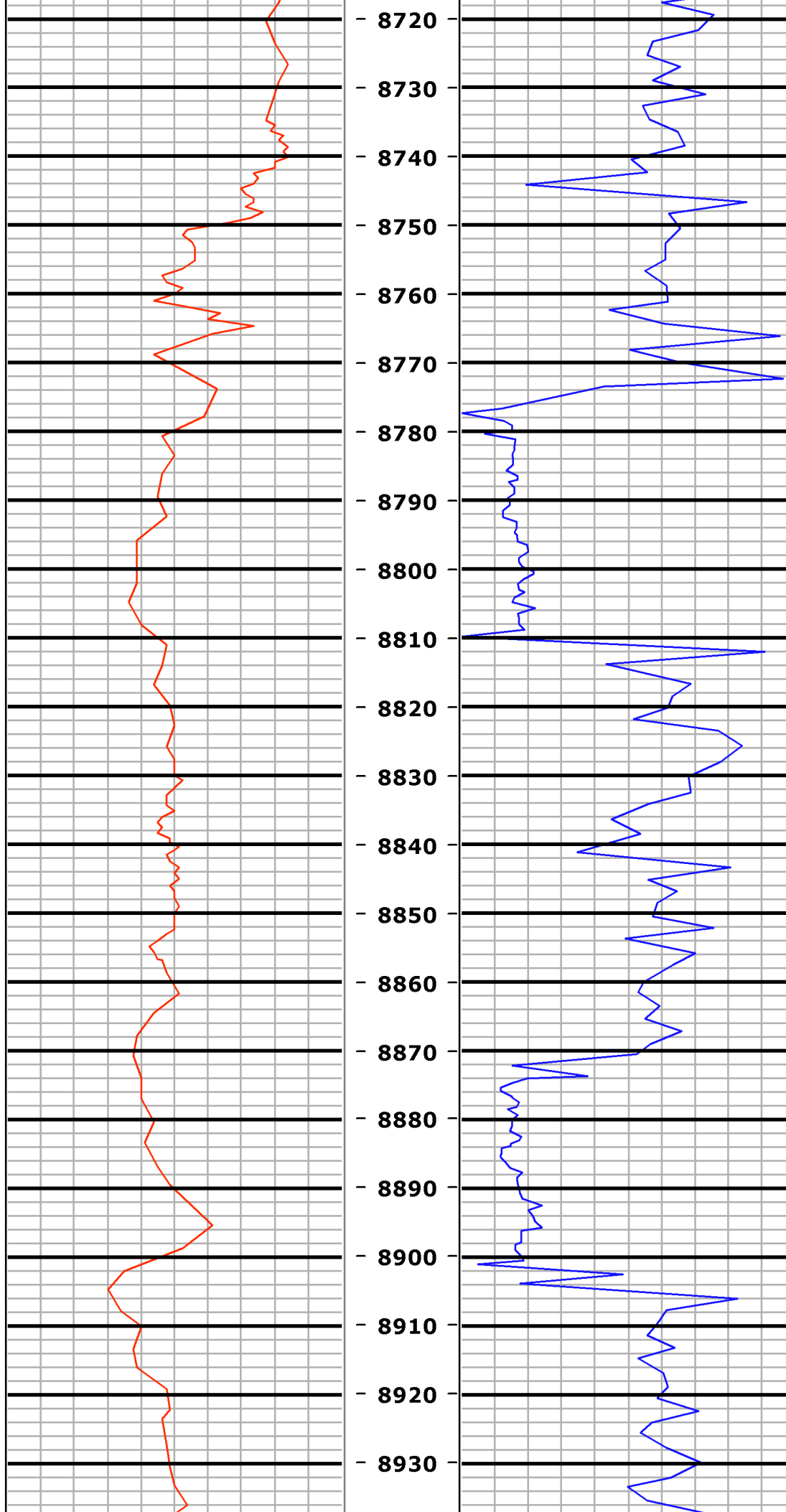
Feet  
5"=100'  
MD

**0** ROP [ft per hr] **500**  
**500** ROP [ft per hr] **1000**



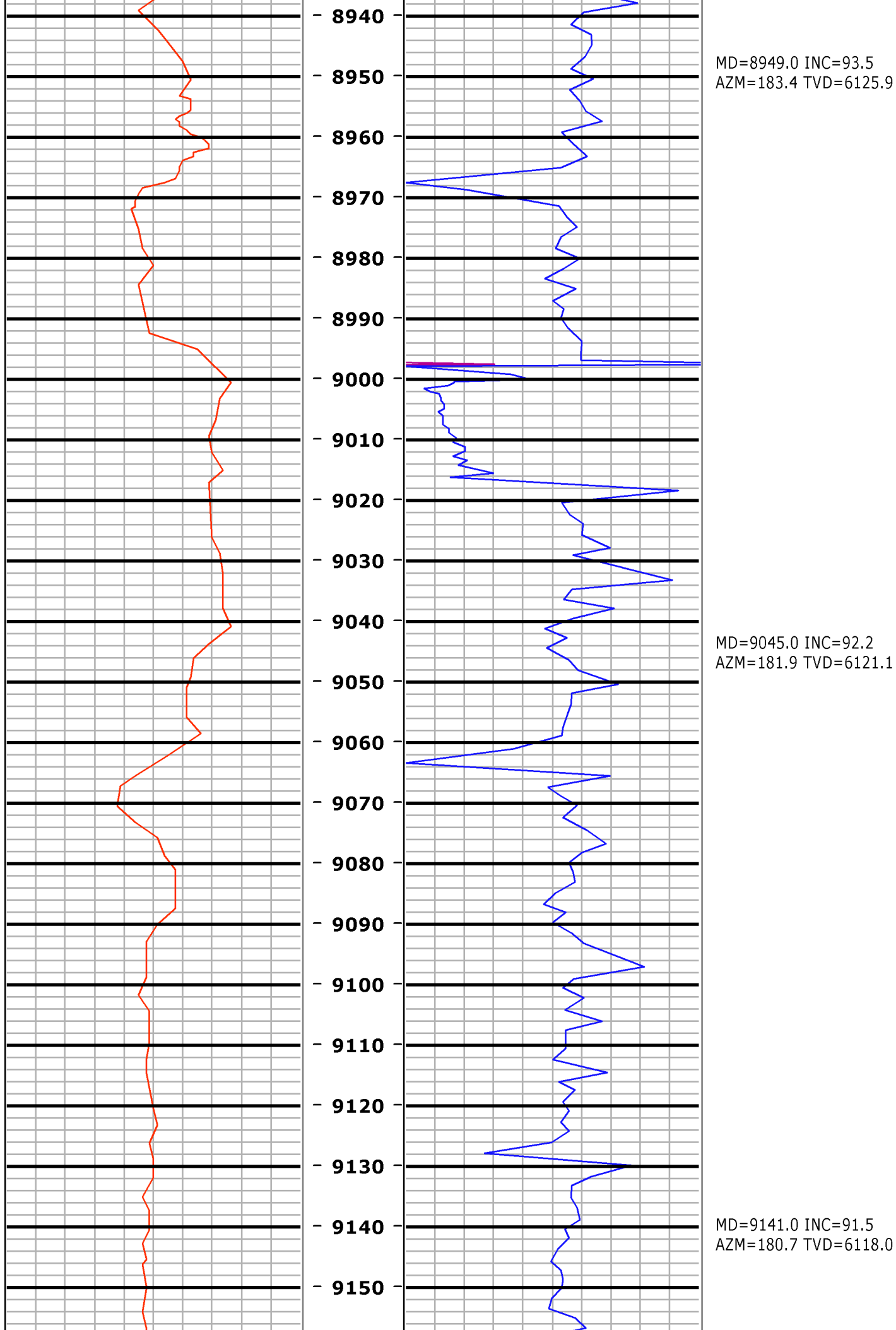
MD=8568.0 INC=88.0  
AZM=179.3 TVD=6118.6

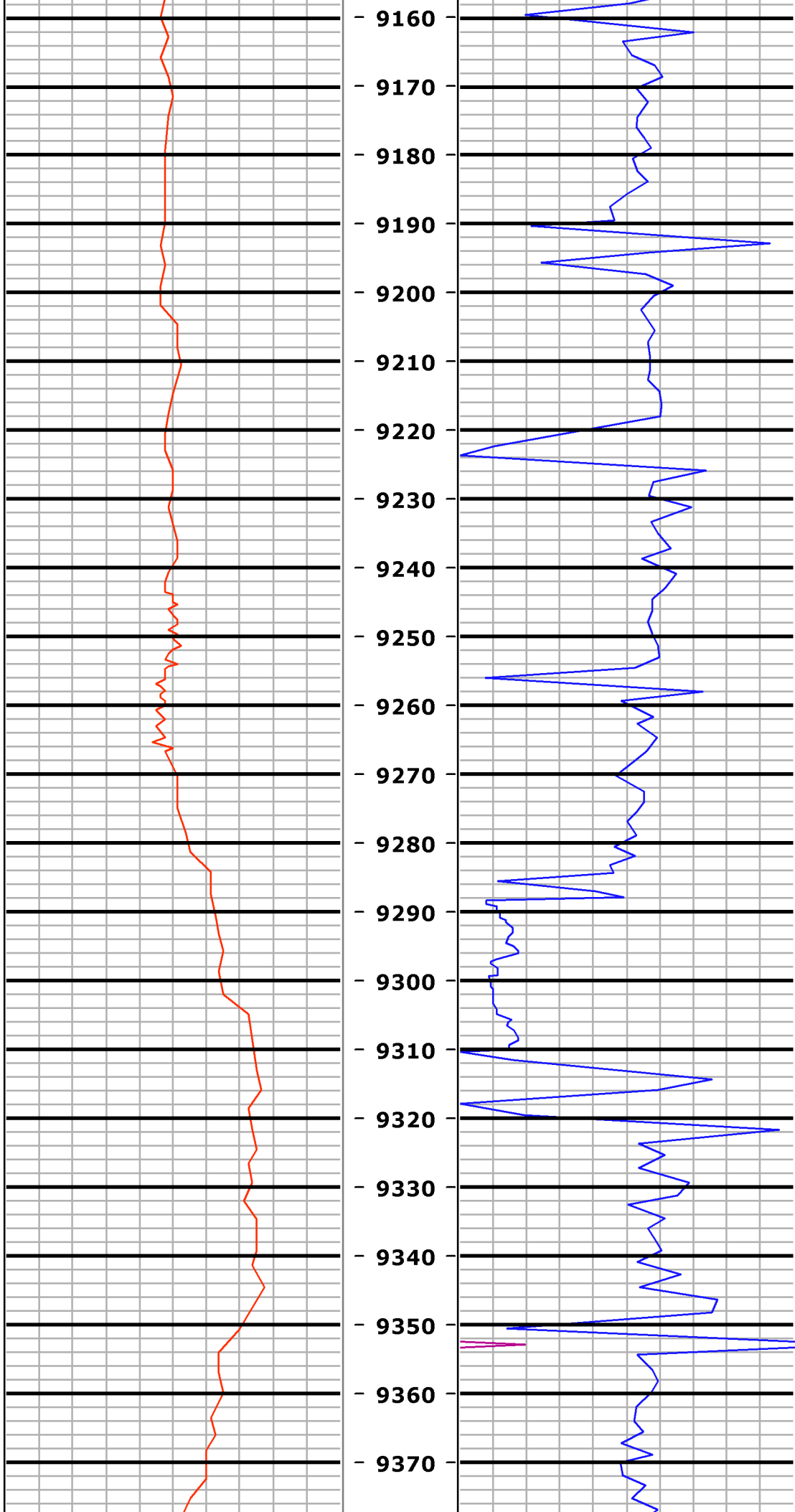
MD=8663.0 INC=87.8  
AZM=179.0 TVD=6122.1



MD=8760.0 INC=87.9  
AZM=179.6 TVD=6125.8

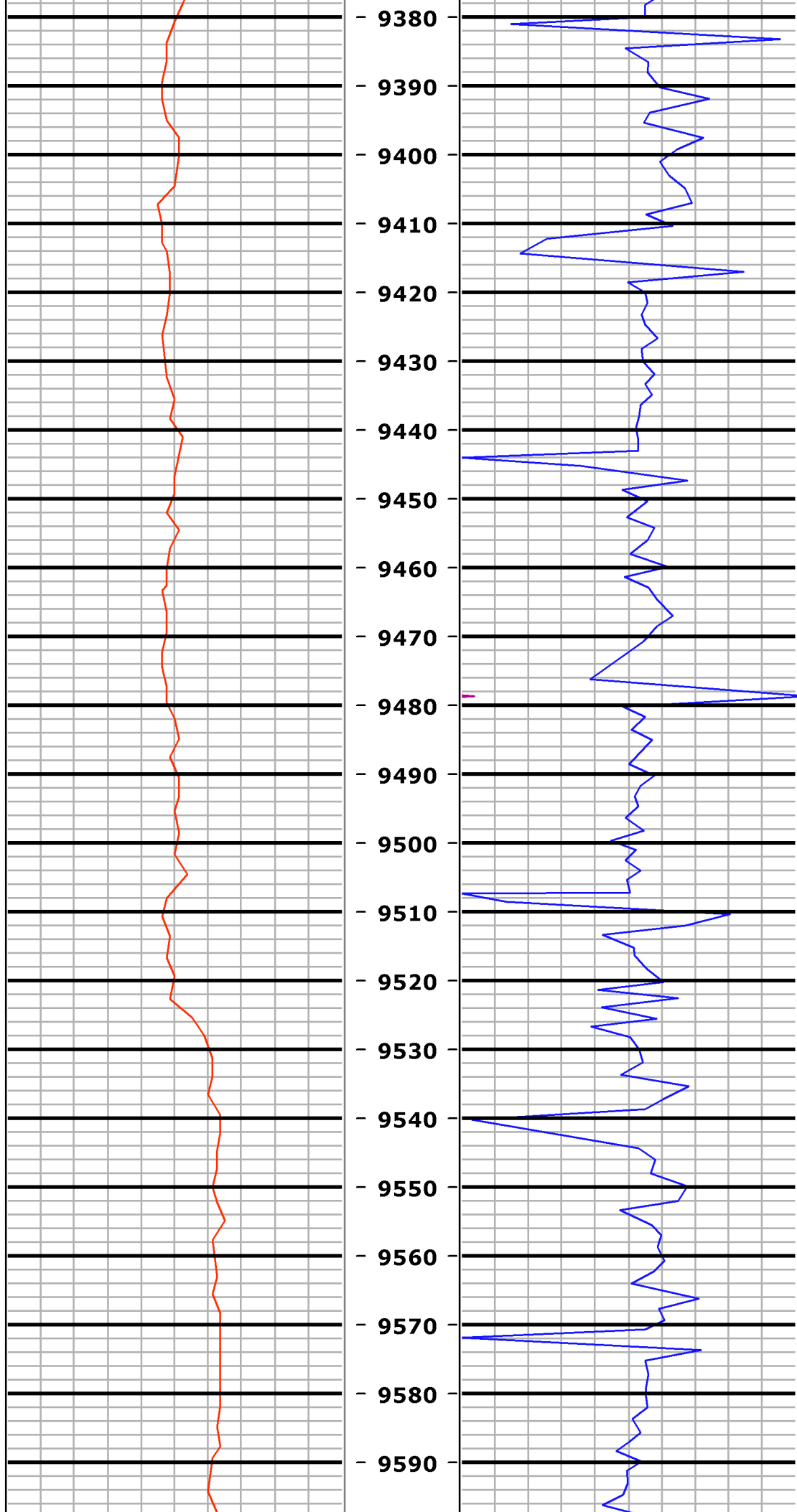
MD=8854.0 INC=89.2  
AZM=182.2 TVD=6128.1





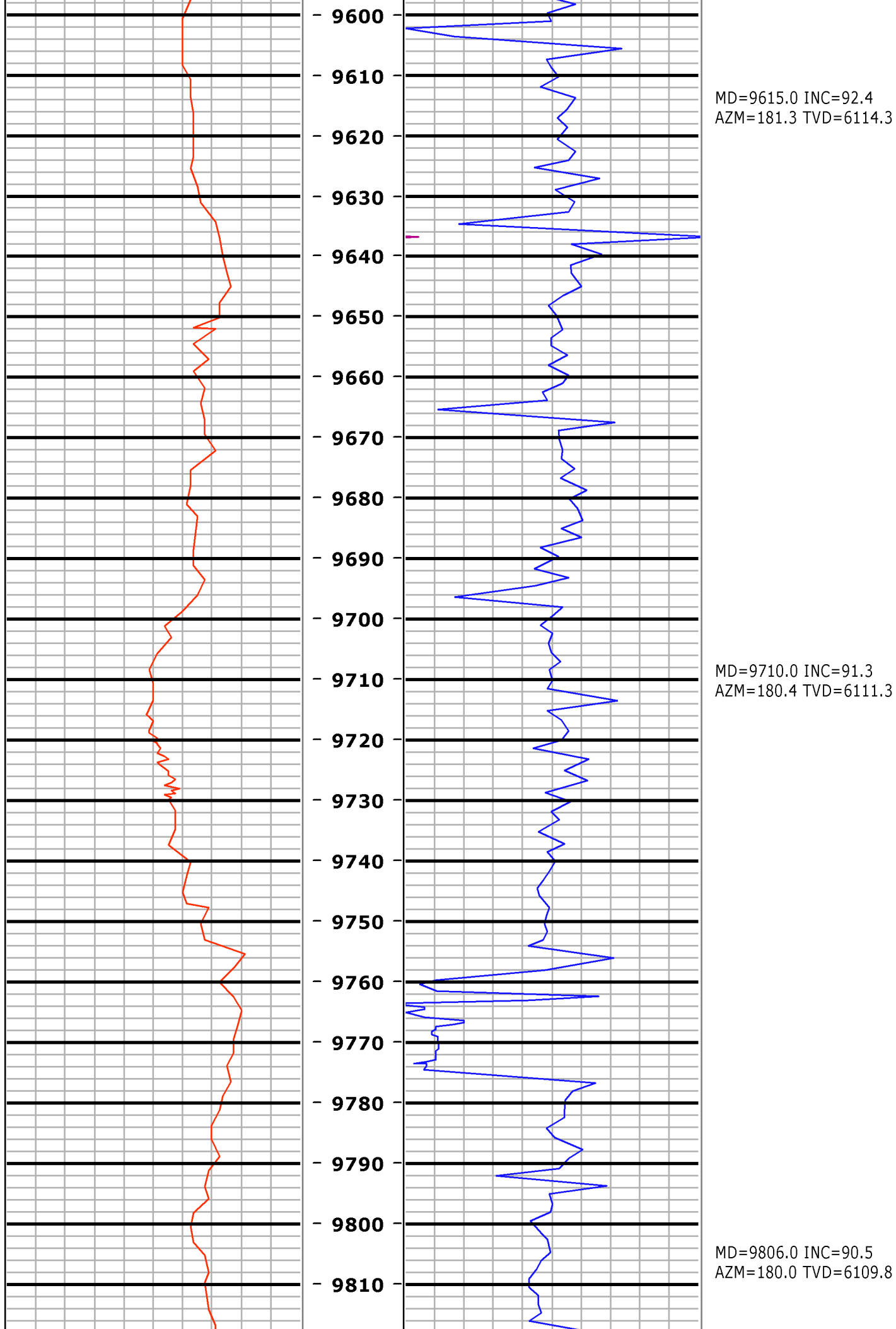
MD=9237.0 INC=89.9  
AZM=179.3 TVD=6116.8

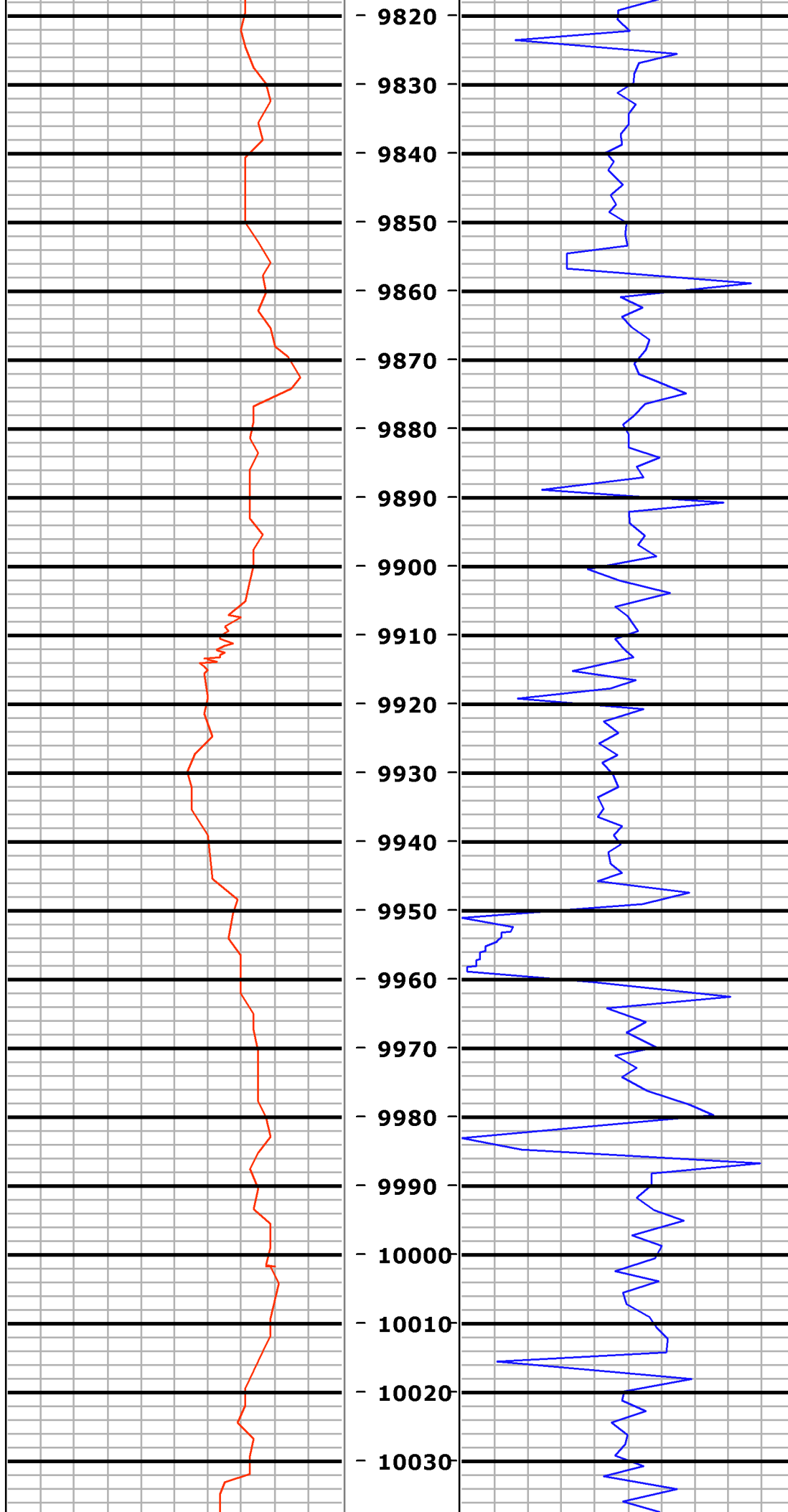
MD=9332.0 INC=90.2  
AZM=180.1 TVD=6116.8



MD=9426.0 INC=89.8  
AZM=179.6 TVD=6116.8

MD=9522.0 INC=90.4  
AZM=179.4 TVD=6116.6

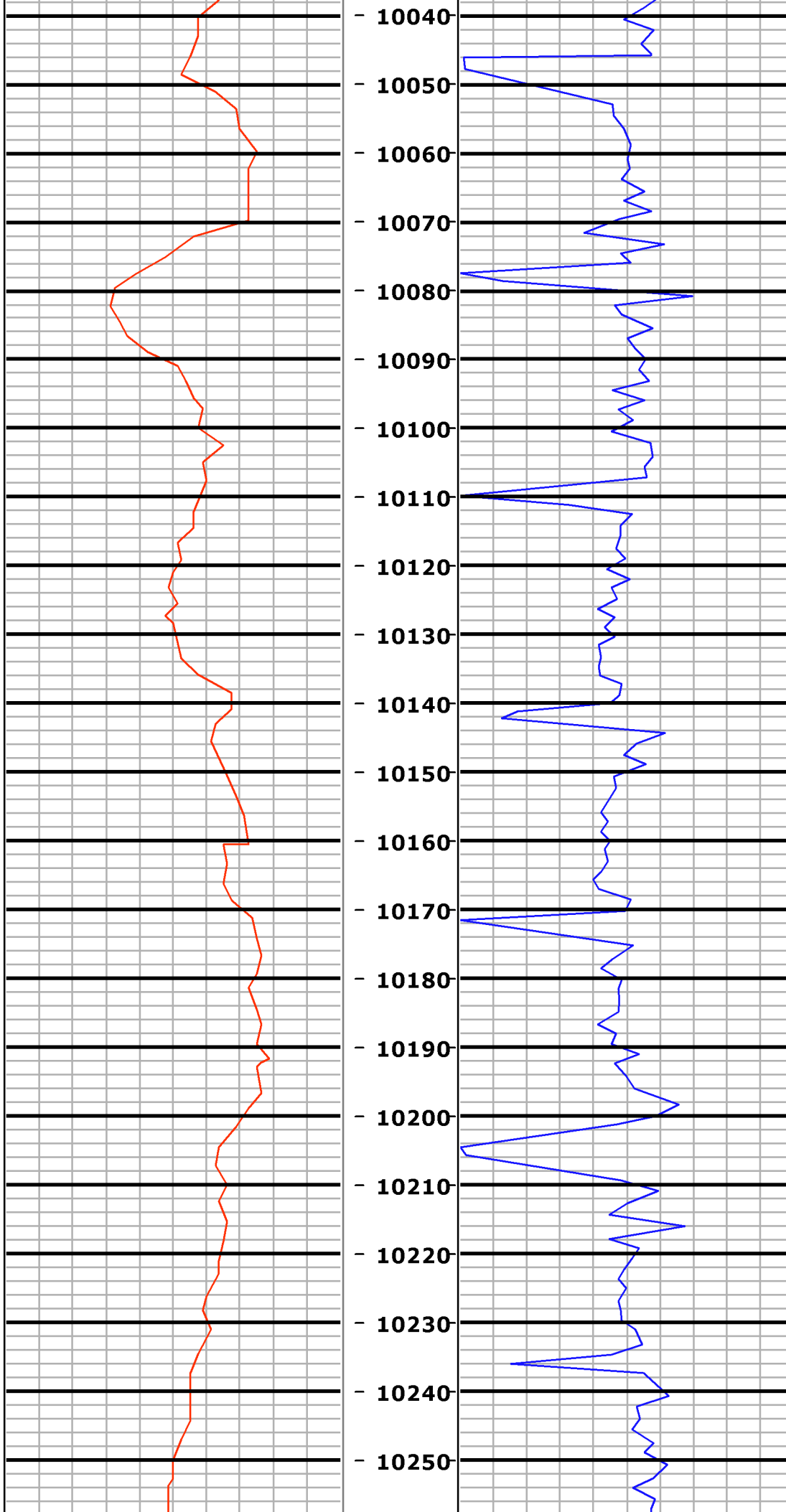




MD=9902.0 INC=90.8  
AZM=179.9 TVD=6108.7

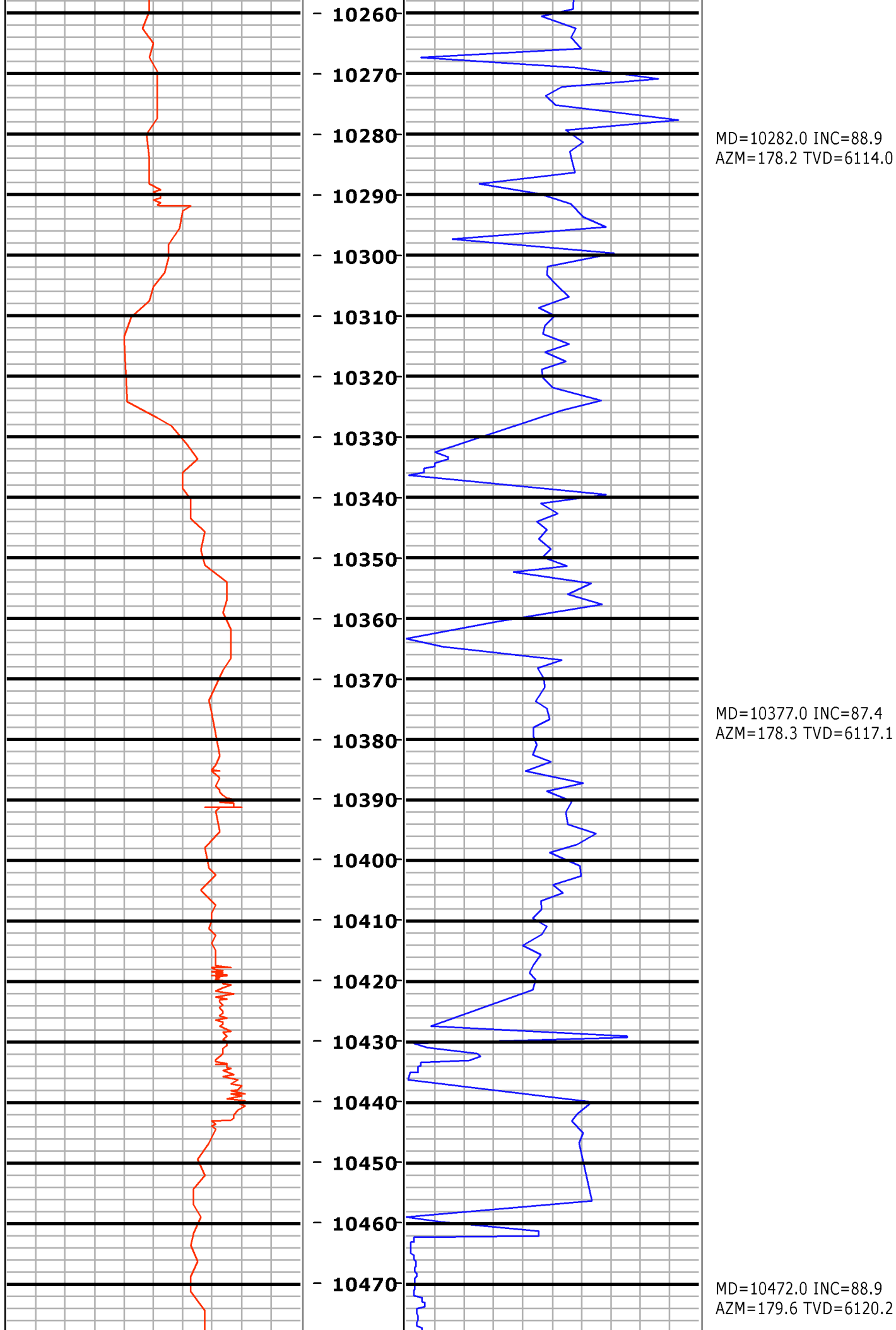
MD=9997.0 INC=89.4  
AZM=179.6 TVD=6108.5

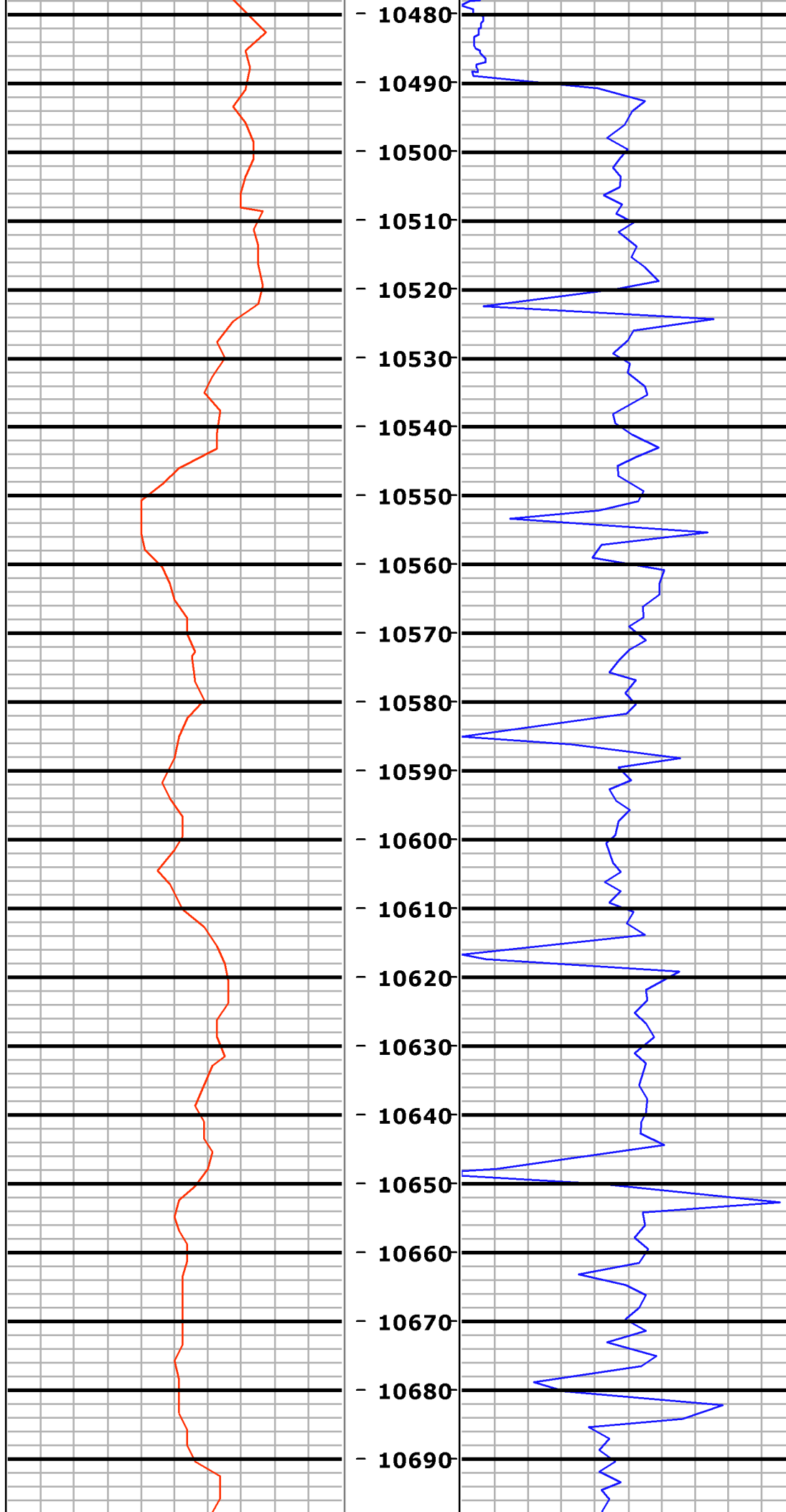




MD=10092.0 INC=89.1  
AZM=179.4 TVD=6109.7

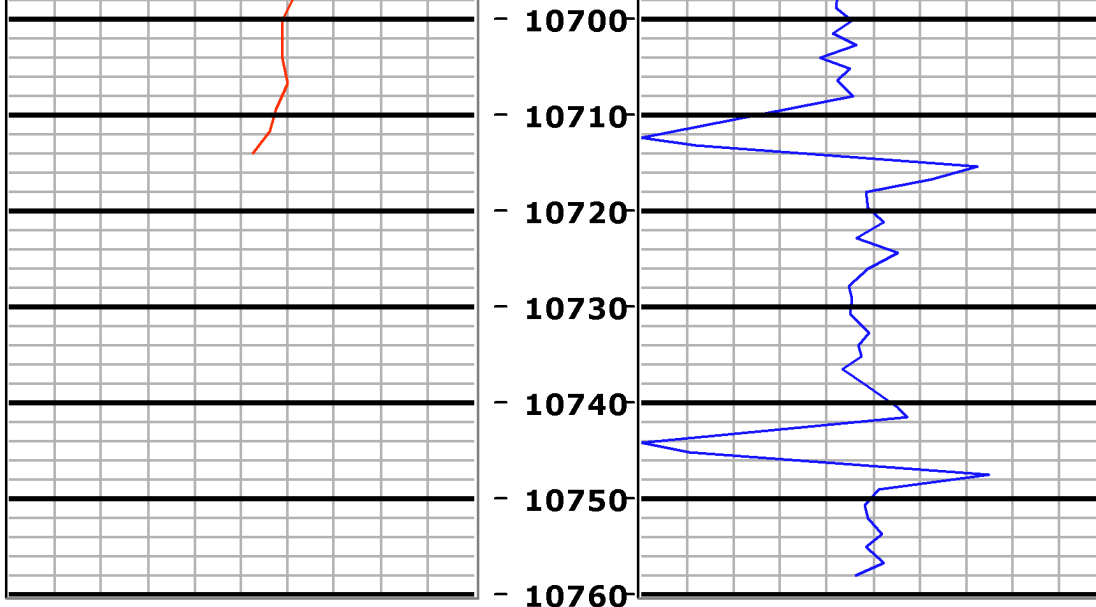
MD=10187.0 INC=88.4  
AZM=178.4 TVD=6111.8





MD=10567.0 INC=91.2  
AZM=179.3 TVD=6120.1

MD=10663.0 INC=91.8  
AZM=178.9 TVD=6117.6



MD=10709.0 INC=91.5  
AZM=178.1 TVD=6116.3

0	Gamma [AAPI]	200
200	Gamma [AAPI]	300

Feet  
5":100'  
MD

0	ROP [ft per hr]	500
500	ROP [ft per hr]	1000

Mezintel

Client: **Bonanza Creek Energy Inc.**

Well Name: **State Pronghorn 11-14-16HNB**

API/UWI:

Well Lic:

Surface LSD:

KB:

0

State/Prov:

**Colorado**

Job #:

**2009-346**

GL:

0

Country:

**USA**

MWD Kit:

**12**

DF:

0