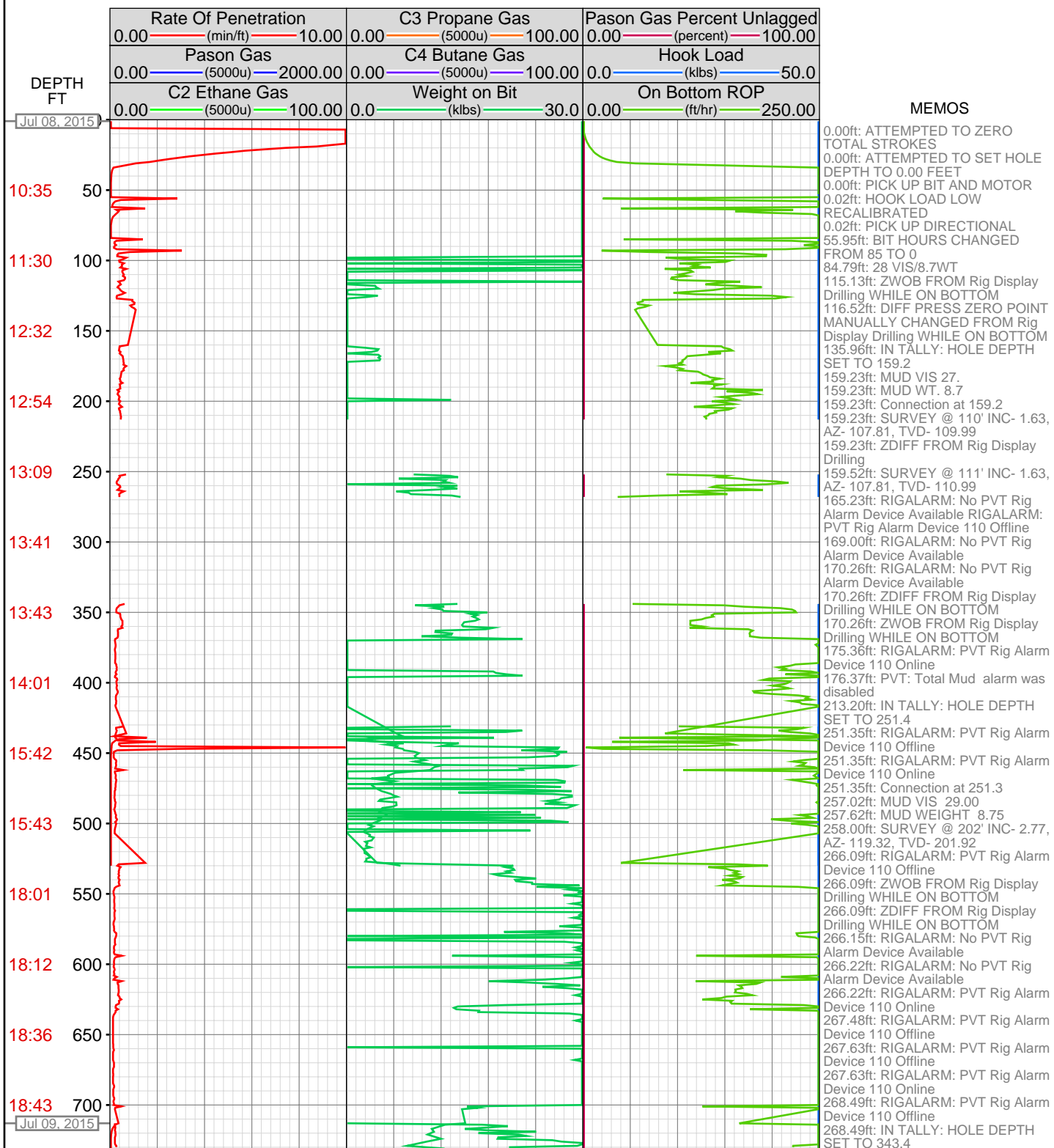
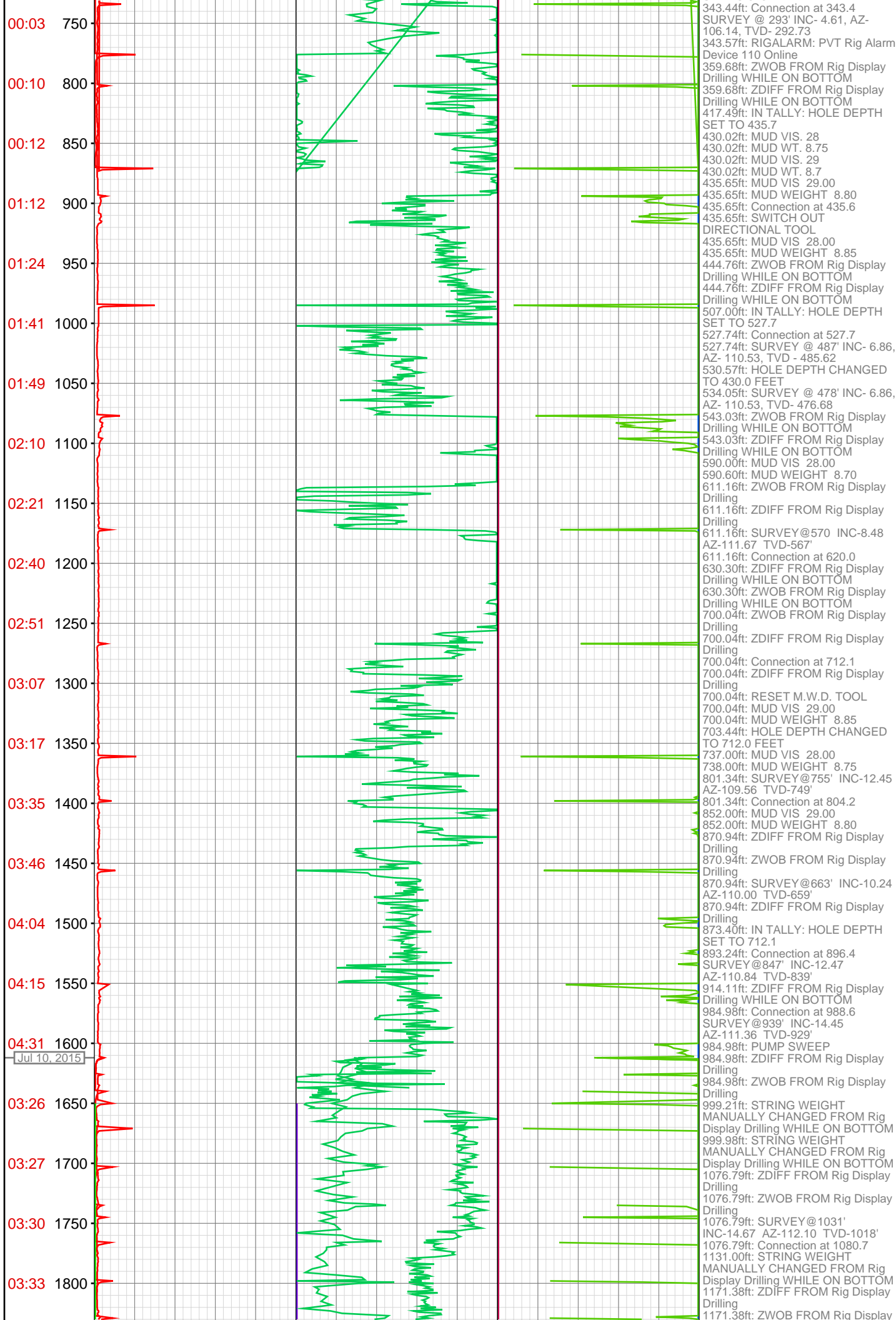
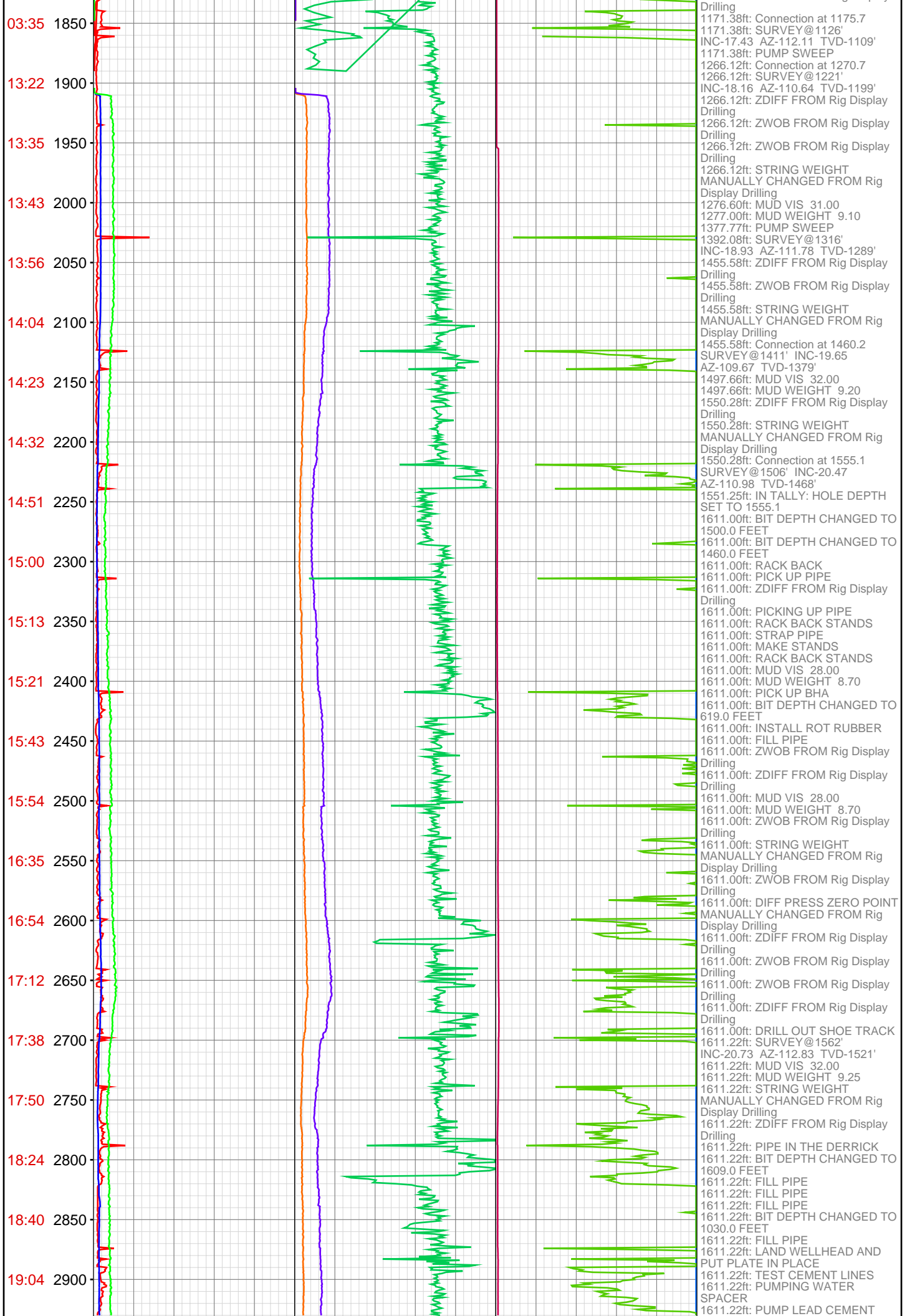


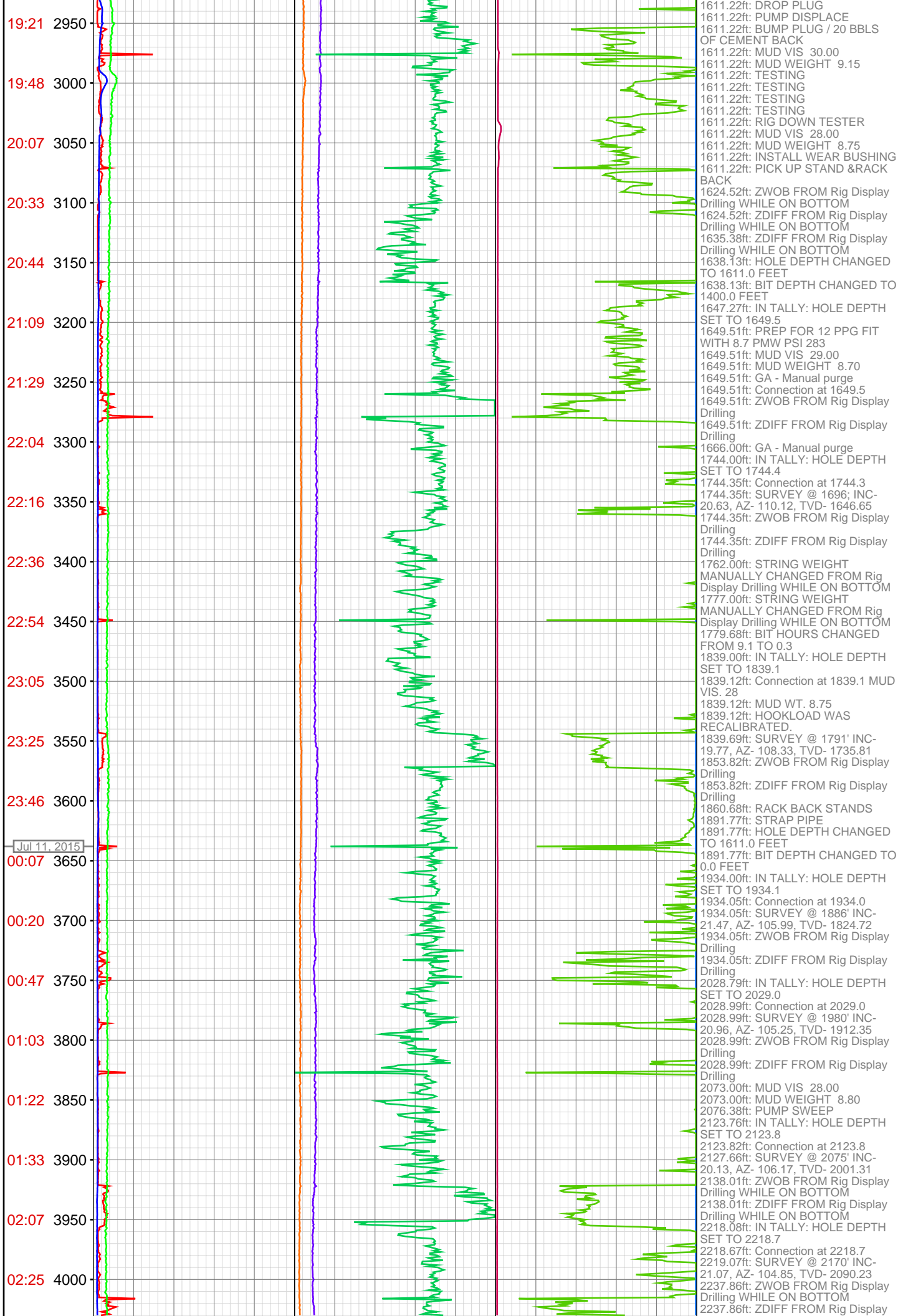
**OPERATOR:** Piceance Energy, LLC  
**WELL:** PICEANCE 28-09M  
**FIELD:**  
**LOCATION:** SEC 28 TWP 9S RNG 93W  
**COUNTRY:** USA  
**RIG:** Pat-UTI 306

**CONTRACTOR:** Patterson-UTI Drilling Company  
**UNIQUE WELL ID:** 05 077 10238 00  
**SPUD DATE:** Jul 08, 2015 12:00  
**RELEASE DATE:**

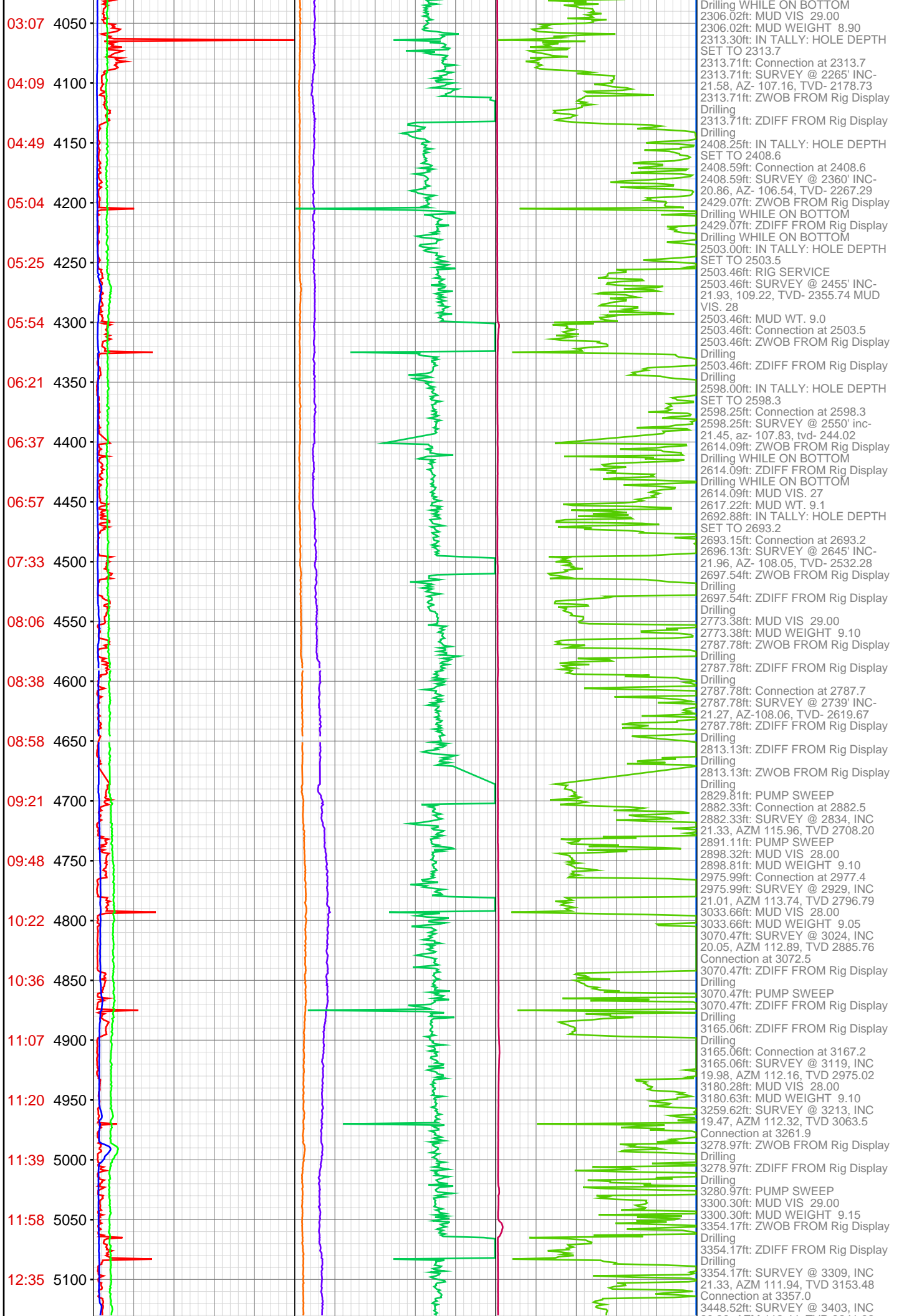


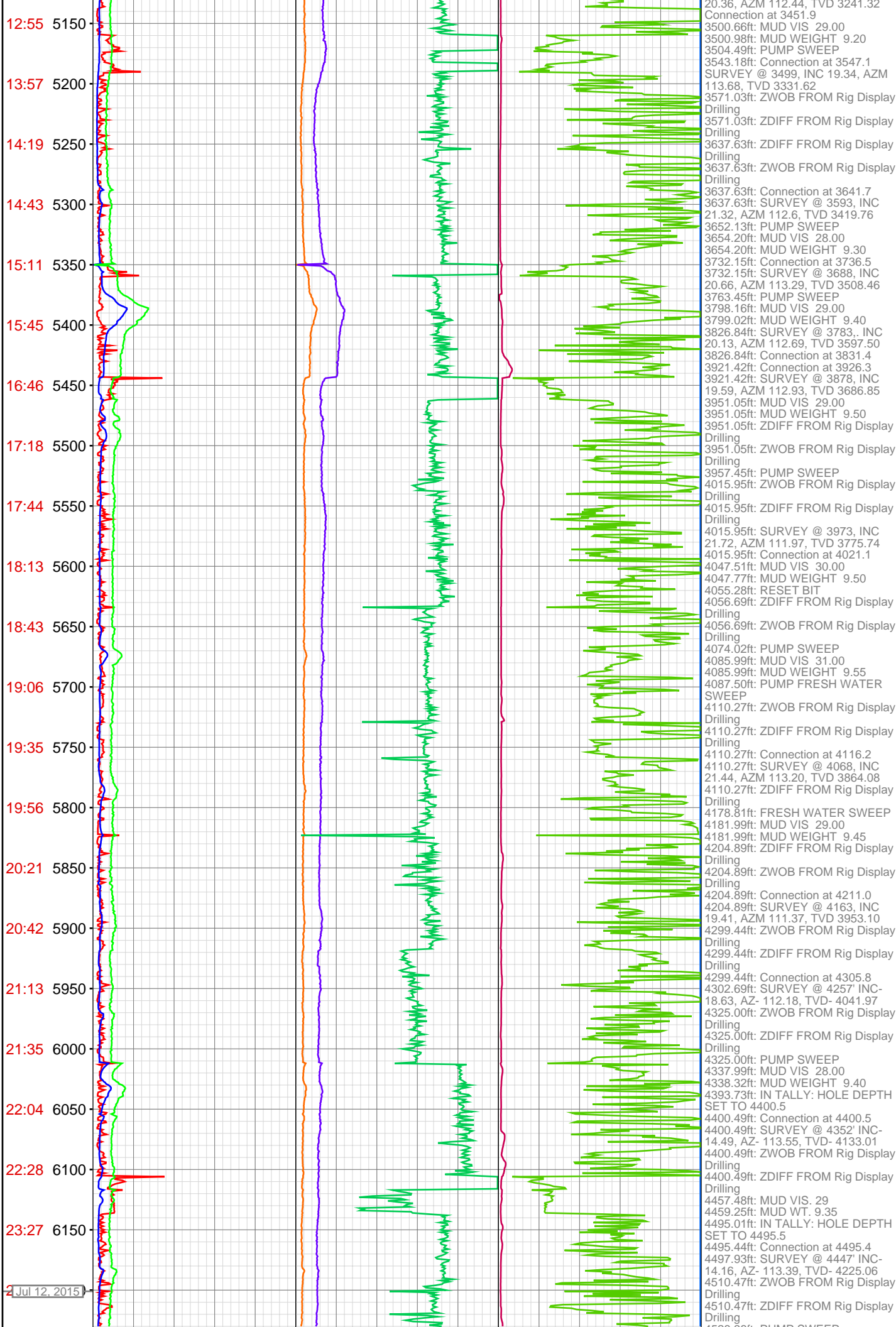


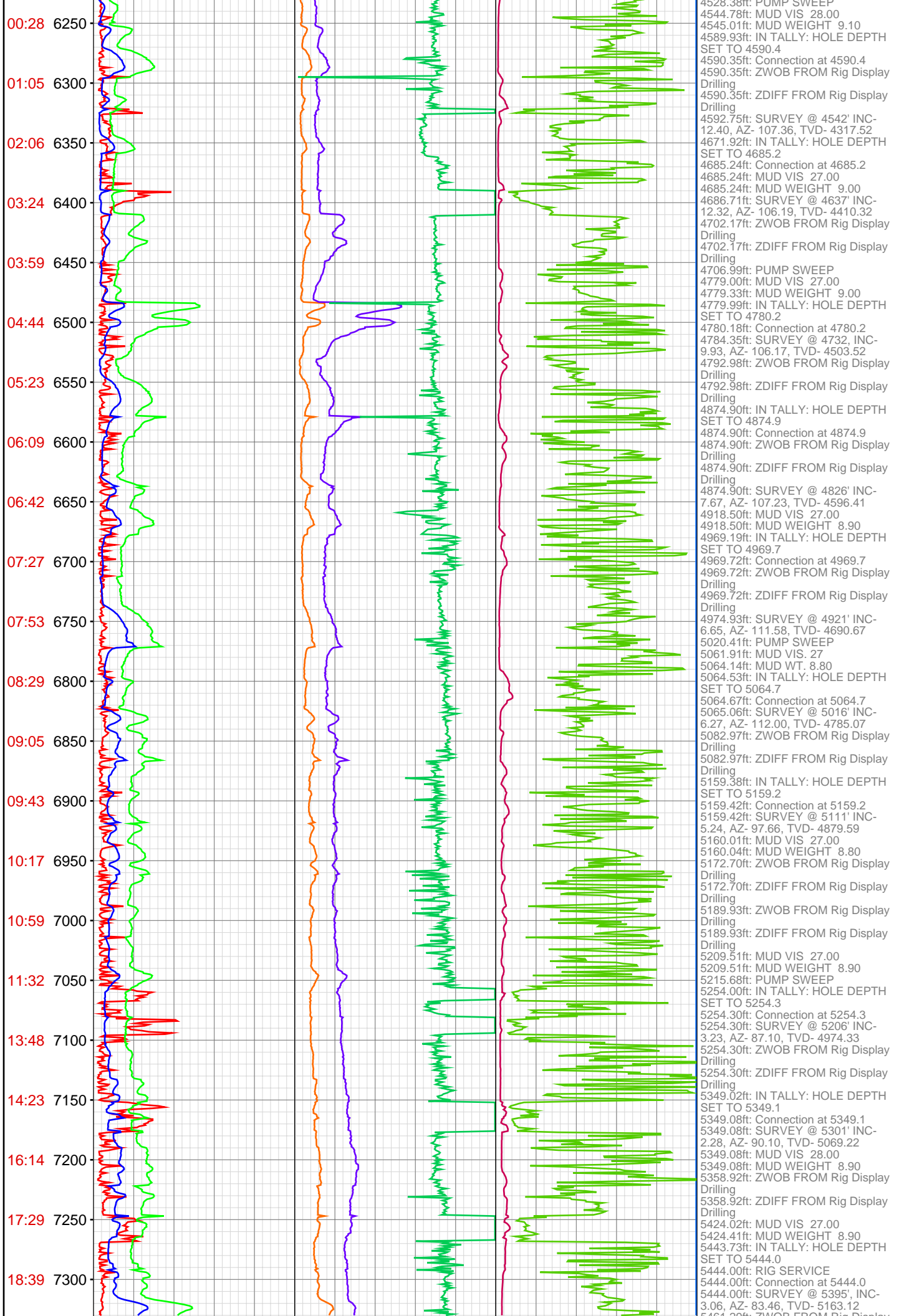




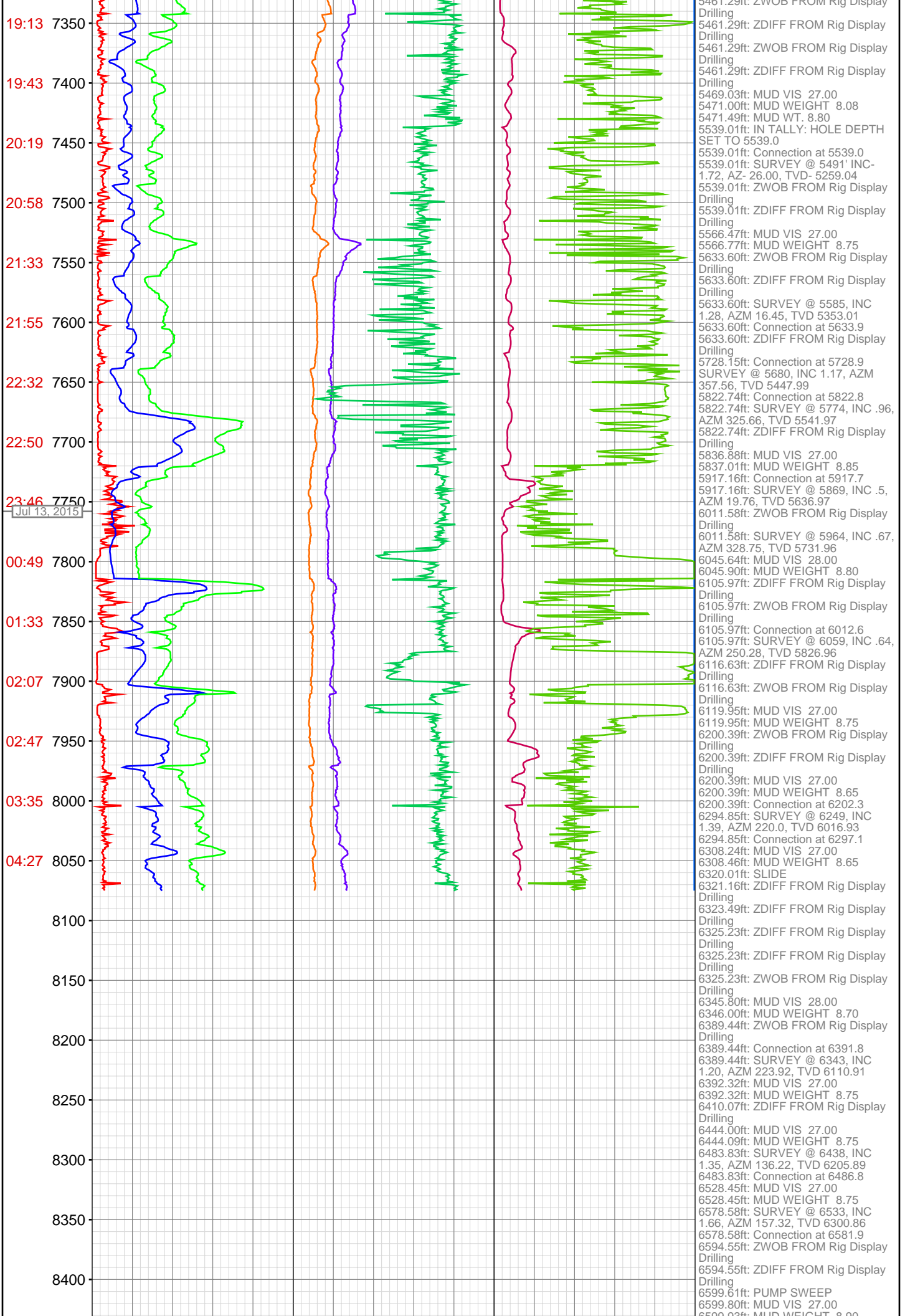














8450  
8500  
8550  
8600  
8650  
8700  
8750  
8800  
8850  
8900  
8950  
9000  
9050  
9100  
9150  
9200  
9250  
9300  
9350  
9400  
9450  
9500

6399.35ft: MUD WEIGHT 8.90  
6673.20ft: IN TALLY: HOLE DEPTH  
SET TO 6676.6  
6676.61ft: Connection at 6676.6  
6676.61ft: SURVEY @ 6628' INC-  
1.62, AZ- 185.84, TVD- 6395.82  
6676.61ft: ZWOB FROM Rig Display  
Drilling  
6676.61ft: ZDIFF FROM Rig Display  
Drilling  
6678.61ft: ZWOB FROM Rig Display  
Drilling  
6678.61ft: ZDIFF FROM Rig Display  
Drilling  
6685.47ft: MUD VIS 27.00  
6685.73ft: MUD WEIGHT 8.08  
6706.23ft: STRING WEIGHT  
MANUALLY CHANGED FROM Rig  
Display Drilling WHILE ON BOTTOM  
6762.20ft: PUMP OUT CELLAR  
6771.00ft: IN TALLY: HOLE DEPTH  
SET TO 6771.3  
6771.29ft: Connection at 6771.3  
6771.29ft: ZWOB FROM Rig Display  
Drilling  
6771.29ft: ZDIFF FROM Rig Display  
Drilling  
6784.38ft: MUD VIS 27.00  
6784.38ft: MUD WEIGHT 9.00  
6803.58ft: PUMP OUT TRIP TANK  
6846.10ft: MUD VIS 27.00  
6846.10ft: MUD WEIGHT 9.00  
6866.01ft: IN TALLY: HOLE DEPTH  
SET TO 6866.2  
6866.14ft: Connection at 6866.1  
6866.14ft: ZWOB FROM Rig Display  
Drilling  
6866.14ft: ZDIFF FROM Rig Display  
Drilling  
6866.14ft: SURVEY @ 6818' INC-  
2.06, AZ- 189.26, TVD- 6585.71  
6925.95ft: MUD VIS 28  
6927.30ft: MUD WT. 9.10  
6960.99ft: IN TALLY: HOLE DEPTH  
SET TO 6961.4  
6961.35ft: Connection at 6961.4  
6961.35ft: ZWOB FROM Rig Display  
Drilling  
6961.35ft: ZDIFF FROM Rig Display  
Drilling  
6967.72ft: SURVEY @ 6914' INC-  
2.09, AZ- 192.55, TVD- 6681.65  
7012.73ft: MUD VIS 28.00  
7012.83ft: MUD WEIGHT 9.10  
7056.00ft: IN TALLY: HOLE DEPTH  
SET TO 7056.2  
7056.20ft: Connection at 7056.2  
7056.20ft: SURVEY @ 7008' INC-  
2.76, AZ- 207.39, TVD- 6775.56  
7064.73ft: VIS 27 WT 9.1  
7066.86ft: ZWOB FROM Rig Display  
Drilling  
7066.86ft: ZDIFF FROM Rig Display  
Drilling  
7084.42ft: MUD VIS 27.00  
7084.42ft: MUD WEIGHT 9.15  
7094.91ft: ZWOB FROM Rig Display  
Drilling  
7094.91ft: ZDIFF FROM Rig Display  
Drilling  
7099.15ft: PUMP SWEEP  
7102.17ft: ZWOB FROM Rig Display  
Drilling  
7102.17ft: ZDIFF FROM Rig Display  
Drilling  
7105.09ft: MUD VIS 27.00  
7106.00ft: MUD WEIGHT 9.15  
7150.98ft: IN TALLY: HOLE DEPTH  
SET TO 7151.4  
7151.44ft: Connection at 7151.4  
7151.44ft: ZWOB FROM Rig Display  
Drilling  
7151.44ft: SURVEY @ 7103' INC-  
2.69, AZ- 220.32, TVD- 6870.46  
7165.19ft: MUD VIS 28.00  
7165.19ft: MUD WEIGHT 9.15  
7176.48ft: ZWOB FROM Rig Display  
Drilling  
7176.48ft: ZDIFF FROM Rig Display  
Drilling  
7184.29ft: VIS 28 MW 9.1  
7230.87ft: ZWOB FROM Rig Display  
Drilling  
7230.87ft: ZDIFF FROM Rig Display  
Drilling  
7246.00ft: IN TALLY: HOLE DEPTH  
SET TO 7246.6  
7246.56ft: MUD WT. 9.1  
7246.56ft: MUD VIS. 27  
7246.56ft: Connection at 7246.6  
7246.56ft: ZDIFF FROM Rig Display  
Drilling  
7247.57ft: SURVEY @ 7198' INC-  
2.87, AZ- 244.01, TVD- 6965.35  
7265.68ft: MUD VIS 27.00  
7265.68ft: MUD WEIGHT 9.05  
7267.88ft: ZDIFF FROM Rig Display  
Drilling  
7267.88ft: PUMP SWEEP  
7341.34ft: ZWOB FROM Rig Display  
Drilling  
7341.34ft: SURVEY @ 7293' INC-  
1.24, AZ- 266.21, TVD- 7060.28  
7341.34ft: Connection at 7341.2

9550	7349.15ft: MUD VIS 27.00 7350.00ft: MUD WEIGHT 9.00 7436.02ft: MUD VIS 28.00 7436.02ft: MUD WEIGHT 9.05 7436.02ft: ZDIFF FROM Rig Display Drilling
9600	7436.02ft: ZWOB FROM Rig Display Drilling 7436.02ft: SURVEY @ 7387, INC 1.38, AZM 251.44, TVD 7154.26 7436.02ft: Connection at 7435.9 7442.75ft: PUMP SWEEP
9650	7514.93ft: MUD VIS 27.00 7514.99ft: MUD WEIGHT 9.05 7530.61ft: ZWOB FROM Rig Display Drilling
9700	7530.61ft: ZDIFF FROM Rig Display Drilling 7530.61ft: Connection at 7530.5 7530.61ft: SURVEY @ 7482, INC 1.5, AZM 255.54, TVD 7249.23
9750	7604.53ft: MUD VIS 28.00 7604.53ft: MUD WEIGHT 9.10 7625.13ft: SURVEY @ 7577, INC 2.17, AZM 254.47, TVD 7344.18 Connection at 7625.6
9800	7667.65ft: DIFF PRESS ZERO POINT MANUALLY CHANGED FROM Rig Display Drilling WHILE ON BOTTOM
9850	7717.16ft: MUD VIS 27.00 7717.16ft: MUD WEIGHT 9.25 7719.72ft: SURVEY @ 7672, INC 3.0, AZM 266.79, TVD 7439.08 Connection at 7720.4
9900	7719.72ft: ZWOB FROM Rig Display Drilling 7719.72ft: ZDIFF FROM Rig Display Drilling
9950	7719.72ft: ZWOB FROM Rig Display Drilling 7719.72ft: ZDIFF FROM Rig Display Drilling
10000	7720.28ft: PUMP SWEEP 7732.38ft: CHECK FLOW SENSOR 7756.00ft: MUD VIS 28.00 7756.04ft: MUD WEIGHT 9.30 7768.04ft: ZDIFF FROM Rig Display Drilling
10050	7768.04ft: ZWOB FROM Rig Display Drilling 7814.37ft: Connection at 7815.3 7814.37ft: SURVEY @ 7767, INC 3.38, AZM 273.95, TVD 7533.94
10100	7814.37ft: MUD VIS 43.00 7814.57ft: MUD WEIGHT 9.35 7894.00ft: MUD VIS 45.00 7894.23ft: MUD WEIGHT 9.40 7909.29ft: ZDIFF FROM Rig Display Drilling
10150	7909.29ft: ZWOB FROM Rig Display Drilling 7909.29ft: Connection at 7910.1 7909.29ft: SURVEY @ 7862, INC 3.32, AZM 270.76, TVD 7628.78
10200	7967.91ft: MUD VIS 49.00 7967.91ft: MUD WEIGHT 9.50 8003.81ft: SURVEY @ 7957, INC 3.58, AZM 261.11, TVD 7723.60 8003.81ft: Connection at 8005.0
10250	8019.42ft: MUD VIS 55.00 8019.42ft: MUD WEIGHT 9.50 8075.07ft: SURVEY @ 8027, INC 2.92, AZM 259.74, TVD 7793.49
10300	8075.10ft: MUD VIS 55.00 8075.10ft: MUD WEIGHT 9.50 8075.10ft: ZDIFF FROM Rig Display Drilling
10350	8075.10ft: ZWOB FROM Rig Display Drilling 8075.10ft: PUMP PILL 8075.10ft: FILL PIPE 8075.10ft: MUD VIS 55.00 8075.10ft: MUD WEIGHT 9.55 8075.10ft: PUMP SWEEP