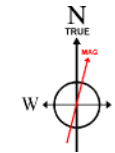


BONANZA CREEK OIL COMPANY

Location: COLORADO Slot: SLOT#09 NORTH PLATTE P31-T34-34HNB NEW SHL(1255'FSL & 2532'FWL SEC 27)
Field: WELD COUNTY Well: NORTH PLATTE P31-T34-34HNB
Facility: SEC.27-T05N-R63W Wellbore: NORTH PLATTE P31-T34-34HNB PWB

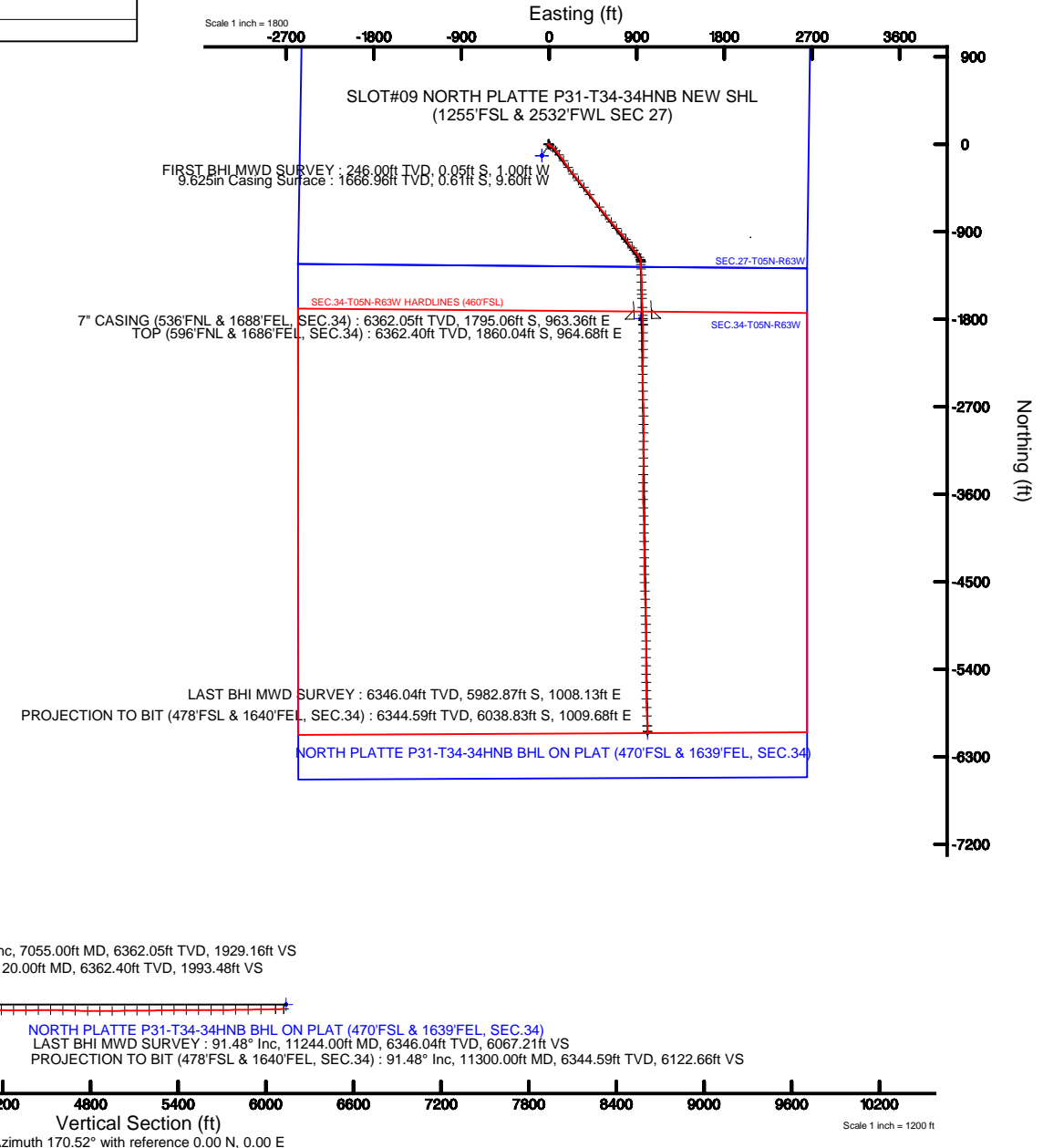
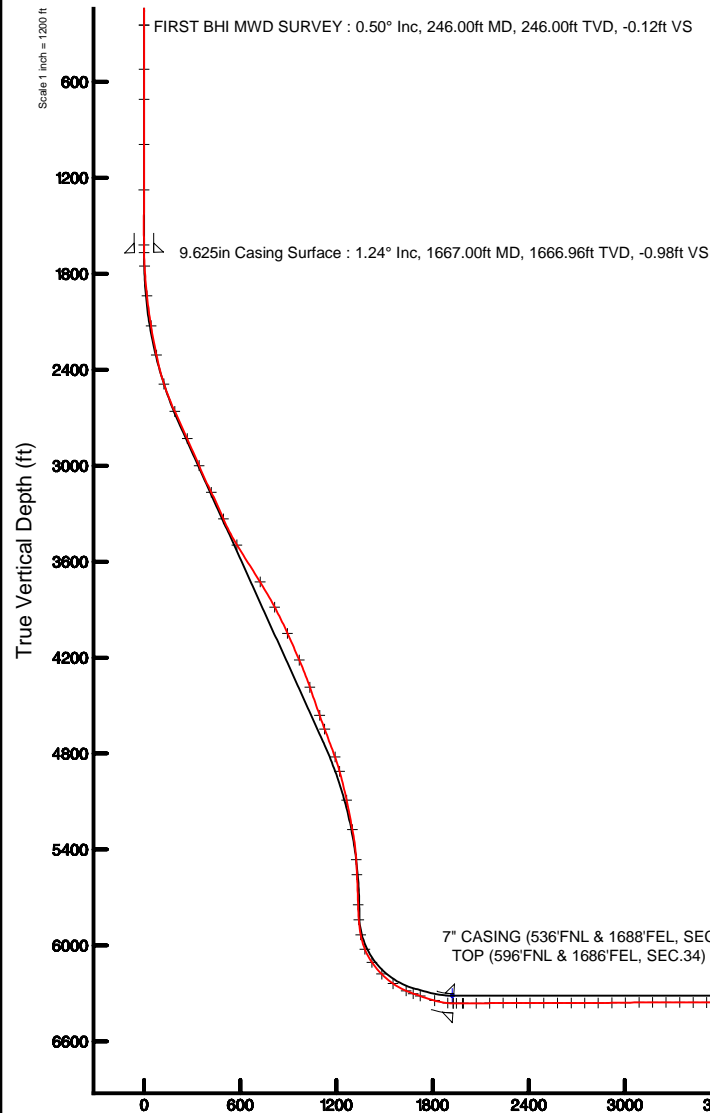
Plot reference wellpath is NORTH PLATTE P31-T34-34HNB PWP (REV-C.0)

True vertical depths are referenced to XTREME 22 (17KB) (RKB)	Grid System: NAD83 / Lambert Colorado SP, Northern Zone (501), US feet
Measured depths are referenced to XTREME 22 (17KB) (RKB)	North Reference: True north
XTREME 22 (17KB) (RKB) to Mean Sea Level: 4558 feet	Scale: True distance
Mean Sea Level to Mud line (At Slot: SLOT#09 NORTH PLATTE P31-T34-34HNB NEW SHL(1255'FSL & 2532'FWL SEC 27)): 0 feet	Depths are in feet
Coordinates are in feet referenced to Slot	Created by: ingnjamr on 11/12/2015



BGGM (1945.0 to 2017.0) Dip: 67.00° Field: 52637 nT
Magnetic North is 8.34 degrees East of True North (at 8/31/2015)

To correct azimuth from Magnetic to True add 8.34 degrees





Actual Wellpath Report

NORTH PLATTE P31-T34-34HNB AWP

Page 1 of 5



REFERENCE WELLPATH IDENTIFICATION

Operator	BONANZA CREEK OIL COMPANY	Slot	SLOT#09 NORTH PLATTE P31-T34-34HNB NEW SHL(1255'FSL & 2532'FWL SEC 27)
Area	COLORADO	Well	NORTH PLATTE P31-T34-34HNB
Field	WELD COUNTY	Wellbore	NORTH PLATTE P31-T34-34HNB AWB
Facility	SEC.27-T05N-R63W		

REPORT SETUP INFORMATION

Projection System	NAD83 / Lambert Colorado SP, Northern Zone (501), US feet	Software System	WellArchitect® 4.1.1
North Reference	True	User	Ingmjmr
Scale	0.999959	Report Generated	11/12/2015 at 3:50:10 PM
Convergence at slot	0.70° East	Database/Source file	WA_DEN_Denver_Defn/NORTH_PLATTE_P31-T34-34HNB__AWB.xml

WELLPATH LOCATION

	Local coordinates		Grid coordinates		Geographic coordinates	
	North[ft]	East[ft]	Easting[US ft]	Northing[US ft]	Latitude	Longitude
Slot Location	117.17	73.51	3300325.32	1378240.58	40°21'59.982"N	104°25'19.834"W
Facility Reference Pt			3300253.24	1378122.53	40°21'58.824"N	104°25'20.784"W
Field Reference Pt			3335925.10	1457282.25	40°34'56.460"N	104°17'26.016"W

WELLPATH DATUM

Calculation method	Minimum curvature	XTREME 22 (17'KB) (RKB) to Facility Vertical Datum	4558.00ft
Horizontal Reference Pt	Slot	XTREME 22 (17'KB) (RKB) to Mean Sea Level	4558.00ft
Vertical Reference Pt	XTREME 22 (17'KB) (RKB)	XTREME 22 (17'KB) (RKB) to Mud Line at Slot (SLOT#09 NORTH PLATTE P31-T34-34HNB NEW SHL(1255'FSL & 2532'FWL SEC 27))	4558.00ft
MD Reference Pt	XTREME 22 (17'KB) (RKB)	Section Origin	N 0.00, E 0.00 ft
Field Vertical Reference	Mean Sea Level	Section Azimuth	170.52°



Actual Wellpath Report

NORTH PLATTE P31-T34-34HNB AWP

Page 2 of 5



REFERENCE WELLPATH IDENTIFICATION

Operator	BONANZA CREEK OIL COMPANY	Slot	SLOT#09 NORTH PLATTE P31-T34-34HNB NEW SHL(1255'FSL & 2532'FWL SEC 27)
Area	COLORADO	Well	NORTH PLATTE P31-T34-34HNB
Field	WELD COUNTY	Wellbore	NORTH PLATTE P31-T34-34HNB AWB
Facility	SEC.27-T05N-R63W		

WELLPATH DATA (97 stations) † = interpolated/extrapolated station

MD [ft]	Inclination [°]	Azimuth [°]	TVD [ft]	Vert Sect [ft]	North [ft]	East [ft]	DLS [°/100ft]	Comments
0.00†	0.000	267.400	0.00	0.00	0.00	0.00	0.00	
17.00	0.000	267.400	17.00	0.00	0.00	0.00	0.00	
246.00	0.500	267.400	246.00	-0.12	-0.05	-1.00	0.22	FIRST BHI MWD SURVEY
521.00	0.340	247.740	520.99	-0.08	-0.41	-2.95	0.08	
710.00	0.310	327.860	709.99	-0.43	-0.19	-3.74	0.22	
992.00	0.280	254.530	991.98	-1.06	0.27	-4.81	0.13	
1275.00	0.530	275.410	1274.98	-1.33	0.21	-6.78	0.10	
1620.00	0.430	250.600	1619.97	-1.51	-0.07	-9.59	0.07	
1752.00	3.570	148.820	1751.88	2.39	-3.75	-7.93	2.79	
1940.00	9.740	119.010	1938.57	17.74	-16.48	9.03	3.66	
2130.00	12.470	127.240	2125.00	42.69	-36.70	39.42	1.66	
2318.00	13.130	142.940	2308.39	76.40	-66.03	68.46	1.88	
2507.00	20.220	140.850	2489.33	123.86	-108.54	102.06	3.76	
2695.00	27.510	145.560	2661.15	191.55	-169.63	147.19	4.01	
2884.00	26.190	144.820	2829.77	268.71	-239.73	195.91	0.72	
3073.00	26.160	141.020	2999.40	342.55	-306.21	246.15	0.89	
3261.00	29.340	140.870	3165.76	418.67	-374.17	301.30	1.69	
3449.00	26.010	140.800	3332.23	494.51	-441.86	356.44	1.77	
3639.00	35.140	142.550	3495.64	579.17	-517.72	416.14	4.83	
3922.00	35.480	142.376	3726.58	723.51	-647.42	515.81	0.13	
4111.00	31.140	141.480	3884.49	814.64	-729.14	579.76	2.31	
4299.00	27.450	140.020	4048.42	894.50	-800.40	637.89	2.00	
4487.00	26.830	139.990	4215.72	968.38	-866.10	693.01	0.33	
4674.00	22.210	138.170	4385.81	1034.62	-924.79	743.74	2.50	
4862.00	21.260	143.230	4560.46	1094.93	-978.58	787.85	1.12	
4956.00	22.850	145.570	4647.58	1126.63	-1007.29	808.37	1.93	
5144.00	22.000	142.430	4821.37	1190.79	-1065.31	850.48	0.78	
5239.00	18.060	139.920	4910.61	1219.17	-1090.69	870.82	4.24	
5427.00	13.380	140.470	5091.53	1263.11	-1129.79	903.45	2.49	
5616.00	11.340	154.680	5276.18	1299.92	-1163.46	925.32	1.93	
5804.00	3.790	144.220	5462.41	1323.31	-1185.24	936.87	4.07	
5899.00	2.590	155.160	5557.27	1328.19	-1189.74	939.61	1.41	
6088.00	1.820	162.050	5746.13	1335.28	-1196.47	942.33	0.43	
6182.00	3.930	171.970	5840.00	1339.98	-1201.08	943.24	2.30	
6276.00	10.440	184.810	5933.22	1351.46	-1212.77	942.98	7.09	
6370.00	22.410	179.950	6023.22	1377.49	-1239.27	942.27	12.81	
6464.00	34.700	174.860	6105.64	1422.02	-1284.01	944.70	13.32	
6559.00	44.880	178.800	6178.56	1482.32	-1344.62	947.83	11.04	
6653.00	55.710	178.370	6238.52	1553.82	-1416.81	949.63	11.53	
6747.00	67.190	178.950	6283.37	1635.42	-1499.22	951.54	12.22	
6795.00	70.470	178.570	6300.70	1679.71	-1543.97	952.51	6.87	
6841.00	71.070	178.150	6315.85	1722.74	-1587.38	953.75	1.56	
6936.00	73.730	176.190	6344.57	1812.67	-1677.81	958.23	3.42	
7020.00	85.080	177.990	6360.00	1894.56	-1760.13	962.40	13.67	
7055.00†	88.191	178.827	6362.05	1929.16	-1795.06	963.36	9.20	7" CASING (536'FNL & 1688'FEL, SEC.34)



Actual Wellpath Report

NORTH PLATTE P31-T34-34HNB AWP

Page 3 of 5



REFERENCE WELLPATH IDENTIFICATION

Operator	BONANZA CREEK OIL COMPANY	Slot	SLOT#09 NORTH PLATTE P31-T34-34HNB NEW SHL(1255'FSL & 2532'FWL SEC 27)
Area	COLORADO	Well	NORTH PLATTE P31-T34-34HNB
Field	WELD COUNTY	Wellbore	NORTH PLATTE P31-T34-34HNB AWB
Facility	SEC.27-T05N-R63W		

WELLPATH DATA (97 stations) † = interpolated/extrapolated station

MD [ft]	Inclination [°]	Azimuth [°]	TVD [ft]	Vert Sect [ft]	North [ft]	East [ft]	DLS [°/100ft]	Comments
7074.00	89.880	179.280	6362.37	1947.95	-1814.05	963.68	9.20	
7114.00	90.030	178.350	6362.40	1987.53	-1854.04	964.51	2.36	
7120.00†	90.060	178.391	6362.40	1993.48	-1860.04	964.68	0.85	TOP (596'FNL & 1686'FEL, SEC.34)
7199.00	90.460	178.930	6362.04	2071.68	-1939.01	966.52	0.85	
7285.00	91.480	180.310	6360.58	2156.58	-2025.00	967.09	2.00	
7370.00	90.400	180.950	6359.19	2240.25	-2109.98	966.16	1.48	
7456.00	89.290	180.870	6359.42	2324.84	-2195.97	964.79	1.29	
7541.00	90.150	181.040	6359.83	2408.43	-2280.95	963.38	1.03	
7627.00	89.410	179.670	6360.16	2493.17	-2366.95	962.84	1.81	
7714.00	90.530	179.580	6360.21	2579.07	-2453.94	963.41	1.29	
7801.00	89.570	178.770	6360.13	2665.08	-2540.93	964.67	1.44	
7887.00	90.220	178.740	6360.29	2750.19	-2626.91	966.53	0.76	
7972.00	90.800	178.450	6359.54	2834.35	-2711.88	968.62	0.76	
8057.00	90.400	179.770	6358.65	2918.39	-2796.87	969.94	1.62	
8143.00	91.190	179.290	6357.45	3003.32	-2882.85	970.64	1.07	
8230.00	90.220	180.490	6356.38	3089.15	-2969.85	970.81	1.77	
8316.00	89.780	180.710	6356.38	3173.82	-3055.84	969.91	0.57	
8401.00	90.770	180.760	6355.97	3257.47	-3140.83	968.82	1.17	
8487.00	89.420	180.110	6355.83	3342.19	-3226.83	968.17	1.74	
8572.00	89.570	180.290	6356.58	3425.98	-3311.82	967.87	0.28	
8658.00	90.580	180.950	6356.47	3510.64	-3397.82	966.94	1.40	
8743.00	90.120	180.390	6355.95	3594.31	-3482.81	965.95	0.85	
8829.00	90.430	180.970	6355.54	3678.96	-3568.80	964.93	0.76	
8914.00	91.020	178.580	6354.46	3762.84	-3653.79	965.26	2.90	
9000.00	91.420	176.880	6352.63	3848.14	-3739.70	968.66	2.03	
9085.00	90.890	178.230	6350.92	3932.48	-3824.60	972.29	1.71	
9173.00	90.430	179.040	6349.90	4019.60	-3912.57	974.39	1.06	
9260.00	88.590	179.470	6350.65	4105.58	-3999.55	975.52	2.17	
9345.00	88.970	179.850	6352.46	4189.48	-4084.53	976.02	0.63	
9430.00	89.410	179.170	6353.66	4273.43	-4169.52	976.75	0.95	
9515.00	90.580	179.630	6353.66	4357.41	-4254.51	977.64	1.48	
9601.00	91.420	179.340	6352.16	4442.35	-4340.50	978.41	1.03	
9686.00	89.780	179.300	6351.27	4526.34	-4425.48	979.42	1.93	
9771.00	87.840	178.420	6353.04	4610.42	-4510.44	981.11	2.51	
9857.00	88.490	178.100	6355.79	4695.59	-4596.36	983.72	0.84	
9942.00	89.110	178.380	6357.57	4779.80	-4681.30	986.33	0.80	
10027.00	89.940	178.240	6358.28	4864.02	-4766.26	988.84	0.99	
10113.00	90.560	178.270	6357.90	4949.23	-4852.22	991.46	0.72	
10198.00	91.450	178.170	6356.41	5033.45	-4937.16	994.10	1.05	
10284.00	90.150	180.200	6355.21	5118.46	-5023.14	995.32	2.80	
10369.00	90.250	179.860	6354.91	5202.29	-5108.14	995.27	0.42	
10455.00	90.920	180.680	6354.04	5287.04	-5194.13	994.87	1.23	
10540.00	91.580	180.080	6352.18	5370.77	-5279.11	994.30	1.05	
10626.00	89.480	179.350	6351.39	5455.66	-5365.10	994.73	2.59	
10711.00	89.480	179.230	6352.16	5539.66	-5450.09	995.79	0.14	



Actual Wellpath Report

NORTH PLATTE P31-T34-34HNB AWP

Page 4 of 5



REFERENCE WELLPATH IDENTIFICATION

Operator	BONANZA CREEK OIL COMPANY	Slot	SLOT#09 NORTH PLATTE P31-T34-34HNB NEW SHL(1255'FSL & 2532'FWL SEC 27)
Area	COLORADO	Well	NORTH PLATTE P31-T34-34HNB
Field	WELD COUNTY	Wellbore	NORTH PLATTE P31-T34-34HNB AWB
Facility	SEC.27-T05N-R63W		

WELLPATH DATA (97 stations)

MD [ft]	Inclination [°]	Azimuth [°]	TVD [ft]	Vert Sect [ft]	North [ft]	East [ft]	DLS [°/100ft]	Comments
10797.00	90.060	179.220	6352.50	5624.67	-5536.08	996.95	0.67	
10882.00	90.740	178.960	6351.91	5708.72	-5621.07	998.30	0.86	
10968.00	91.450	178.960	6350.27	5793.77	-5707.03	999.86	0.83	
11055.00	90.280	178.060	6348.95	5879.92	-5793.99	1002.12	1.70	
11142.00	90.840	178.100	6348.10	5966.16	-5880.94	1005.04	0.65	
11244.00	91.480	178.420	6346.04	6067.21	-5982.87	1008.13	0.70	LAST BHI MWD SURVEY
11300.00	91.480	178.420	6344.59	6122.66	-6038.83	1009.68	0.00	PROJECTION TO BIT (478'FSL & 1640'FEL, SEC.34)

HOLE & CASING SECTIONS - Ref Wellbore: NORTH PLATTE P31-T34-34HNB AWB Ref Wellpath: NORTH PLATTE P31-T34-34HNB AWP

String/Diameter	Start MD [ft]	End MD [ft]	Interval [ft]	Start TVD [ft]	End TVD [ft]	Start N/S [ft]	Start E/W [ft]	End N/S [ft]	End E/W [ft]
13.5in Open Hole	17.00	1677.00	1660.00	17.00	1676.96	0.00	0.00	-0.83	-9.51
9.625in Casing Surface	17.00	1667.00	1650.00	17.00	1666.96	0.00	0.00	-0.61	-9.60
8.75in Open Hole	1677.00	7068.00	5391.00	1676.96	6362.33	-0.83	-9.51	-1808.05	963.60
7in Casing Intermediate	17.00	7055.00	7038.00	17.00	6362.05	0.00	0.00	-1795.06	963.36
6.125in Open Hole	7068.00	11300.00	4232.00	6362.33	6344.59	-1808.05	963.60	-6038.83	1009.68

TARGETS

Name	TVD [ft]	North [ft]	East [ft]	Grid East [US ft]	Grid North [US ft]	Latitude	Longitude	Shape
SEC.27-T05N-R63W	0.00	-117.17	-73.51	3300253.24	1378122.53	40°21'58.824"N	104°25'20.784"W	polygon
SEC.34-T05N-R63W	0.00	-117.17	-73.51	3300253.24	1378122.53	40°21'58.824"N	104°25'20.784"W	polygon
NORTH PLATTE P31-T34-34HNB BHL ON PLAT (470'FSL & 1639'FEL, SEC.34)	6313.00	-6055.39	1010.72	3301409.52	1372198.18	40°21'00.144"N	104°25'06.780"W	point
NORTH PLATTE P31-T34-34HNB EP ON PLAT	6313.00	-1792.97	940.88	3301287.87	1376459.25	40°21'42.264"N	104°25'07.680"W	point
SEC.34-T05N-R63W HARDLINES (460'FSL)	6327.00	-117.17	-73.51	3300253.24	1378122.53	40°21'58.824"N	104°25'20.784"W	polygon

WELLPATH COMPOSITION - Ref Wellbore: NORTH PLATTE P31-T34-34HNB AWB Ref Wellpath: NORTH PLATTE P31-T34-34HNB AWP

Start MD [ft]	End MD [ft]	Positional Uncertainty Model	Log Name/Comment	Wellbore
17.00	1620.00	NaviTrak (MagCorr)	BHI MWD/NAVITRAK (MAGCORR) 13.5" HOLE <246-1620>	NORTH PLATTE P31-T34-34HNB AWB
1620.00	7020.00	NaviTrak (MagCorr)	BHI MWD/NAVITRAK (MAGCORR) 8.5" HOLE <1752-7020>	NORTH PLATTE P31-T34-34HNB AWB
7020.00	11244.00	NaviTrak (MagCorr)	BHI MWD/NAVITRAK (MAGCORR) 6.125" HOLE <7074-11244>	NORTH PLATTE P31-T34-34HNB AWB
11244.00	11300.00	Blind Drilling (std)	Projection to bit	NORTH PLATTE P31-T34-34HNB AWB



Actual Wellpath Report

NORTH PLATTE P31-T34-34HNB AWP

Page 5 of 5



REFERENCE WELLPATH IDENTIFICATION

Operator	BONANZA CREEK OIL COMPANY	Slot	SLOT#09 NORTH PLATTE P31-T34-34HNB NEW SHL(1255'FSL & 2532'FWL SEC 27)
Area	COLORADO	Well	NORTH PLATTE P31-T34-34HNB
Field	WELD COUNTY	Wellbore	NORTH PLATTE P31-T34-34HNB AWP
Facility	SEC.27-T05N-R63W		

WELLPATH COMMENTS

MD [ft]	Inclination [°]	Azimuth [°]	TVD [ft]	Comment
246.00	0.500	267.400	246.00	FIRST BHI MWD SURVEY
7055.00	88.191	178.827	6362.05	7" CASING (536'FNL & 1688'FEL, SEC.34)
7120.00	90.060	178.391	6362.40	TOP (596'FNL & 1686'FEL, SEC.34)
11244.00	91.480	178.420	6346.04	LAST BHI MWD SURVEY
11300.00	91.480	178.420	6344.59	PROJECTION TO BIT (478'FSL & 1640'FEL, SEC.34)