

BONANZA CREEK OIL COMPANY

Location: COLORADO Slot: SLOT#05 NORTH PLATTE 31-34-34HNC (1204'FSL & 2502'FWL, SEC.27)
Field: WELD COUNTY Well: NORTH PLATTE 31-34-34HNC
Facility: SEC.27-T05N-R63W Wellbore: NORTH PLATTE 31-34-34HNC PWB

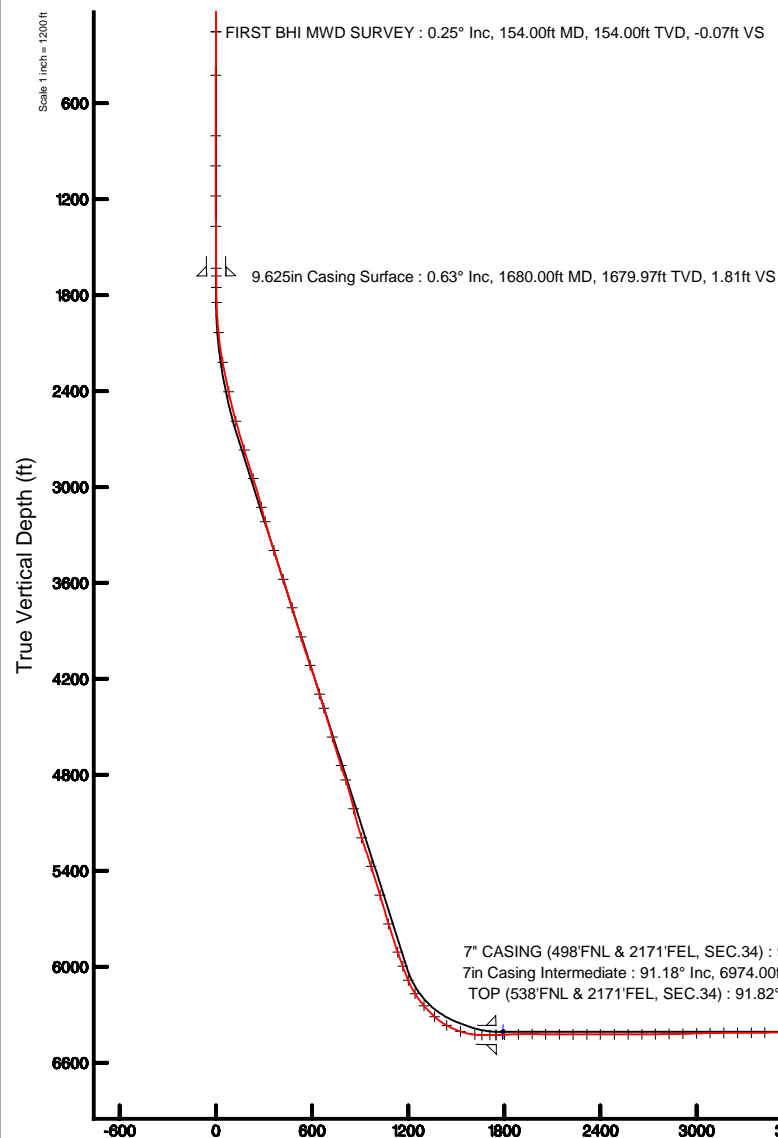
Plot reference wellpath is NORTH PLATTE 31-34-34HNC PWP (REV-B.0)

True vertical depths are referenced to XTREME 22 (17'KB) (RKB)	Grid System: NAD83 / Lambert Colorado SP, Northern Zone (501), US feet
Measured depths are referenced to XTREME 22 (17'KB) (RKB)	North Reference: True north
XTREME 22 (17'KB) (RKB) to Mean Sea Level: 4558 feet	Scale: True distance
Mean Sea Level to Mud line (At Slot: SLOT#05 NORTH PLATTE 31-34-34HNC (1204'FSL & 2502'FWL, SEC.27)): 0 feet	Depths are in feet
Coordinates are in feet referenced to Slot	Created by: ingnjamm on 11/12/2015

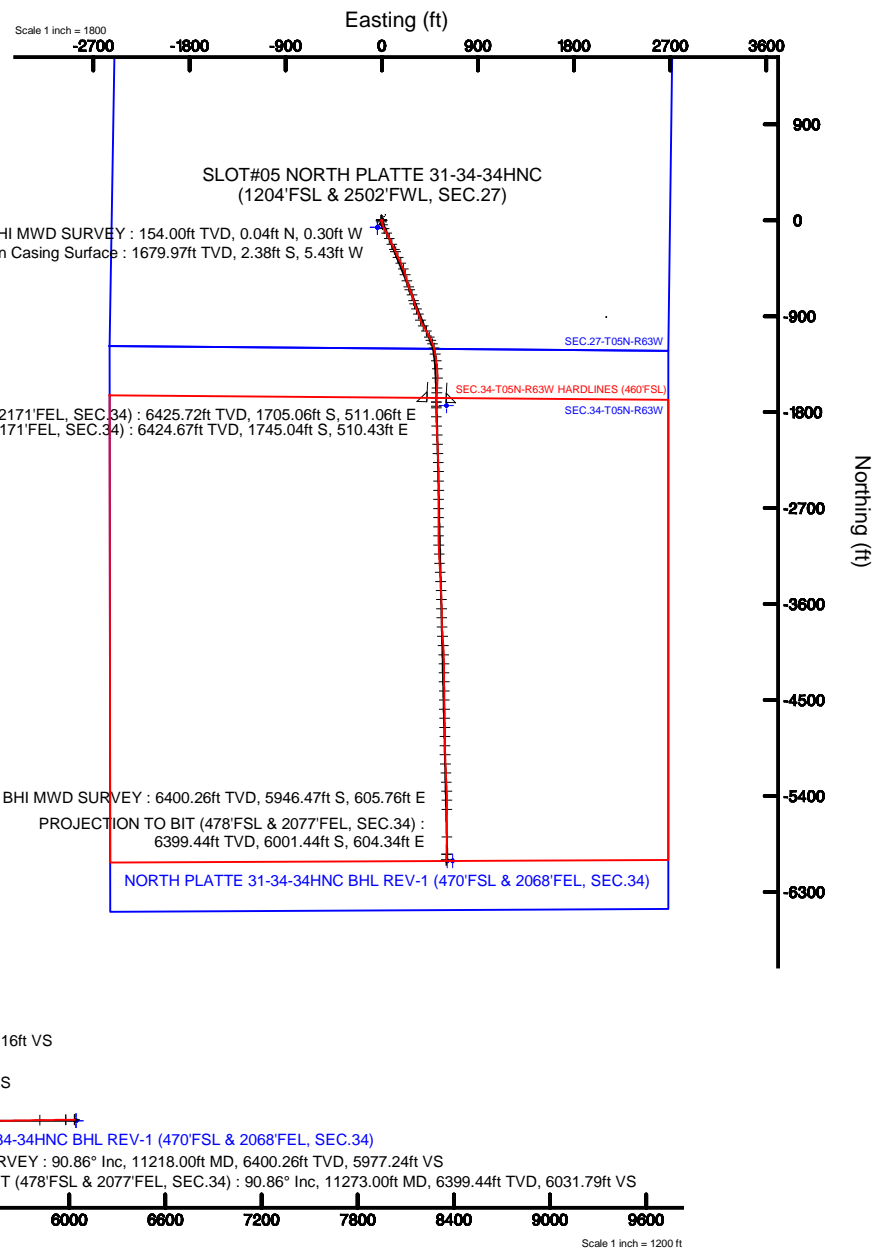


BGGM (1945.0 to 2017.0) Dip: 67.00° Field: 52641.3 nT
Magnetic North is 8.35 degrees East of True North (at 8/17/2015)

To correct azimuth from Magnetic to True add 8.35 degrees



Azimuth 174.17° with reference 0.00 N, 0.00 E





Actual Wellpath Report

NORTH PLATTE 31-34-34HNC AWP

Page 1 of 5



REFERENCE WELLPATH IDENTIFICATION

Operator	BONANZA CREEK OIL COMPANY	Slot	SLOT#05 NORTH PLATTE 31-34-34HNC (1204'FSL & 2502'FWL, SEC.27)
Area	COLORADO	Well	NORTH PLATTE 31-34-34HNC
Field	WELD COUNTY	Wellbore	NORTH PLATTE 31-34-34HNC AWB
Facility	SEC.27-T05N-R63W		

REPORT SETUP INFORMATION

Projection System	NAD83 / Lambert Colorado SP, Northern Zone (501), US feet	Software System	WellArchitect® 4.1.1
North Reference	True	User	Ingmjmr
Scale	0.999959	Report Generated	11/12/2015 at 3:15:04 PM
Convergence at slot	0.70° East	Database/Source file	WA_DEN_Denver_Defn/NORTH_PLATTE_31-34-34HNC_AWB.xml

WELLPATH LOCATION

	Local coordinates		Grid coordinates		Geographic coordinates	
	North[ft]	East[ft]	Easting[US ft]	Northing[US ft]	Latitude	Longitude
Slot Location	66.42	41.57	3300294.00	1378189.45	40°21'59.480"N	104°25'20.247"W
Facility Reference Pt			3300253.24	1378122.53	40°21'58.824"N	104°25'20.784"W
Field Reference Pt			3335925.10	1457282.25	40°34'56.460"N	104°17'26.016"W

WELLPATH DATUM

Calculation method	Minimum curvature	XTREME 22 (17'KB) (RKB) to Facility Vertical Datum	4558.00ft
Horizontal Reference Pt	Slot	XTREME 22 (17'KB) (RKB) to Mean Sea Level	4558.00ft
Vertical Reference Pt	XTREME 22 (17'KB) (RKB)	XTREME 22 (17'KB) (RKB) to Mud Line at Slot (SLOT#05 NORTH PLATTE 31-34-34HNC (1204'FSL & 2502'FWL, SEC.27))	4558.00ft
MD Reference Pt	XTREME 22 (17'KB) (RKB)	Section Origin	N 0.00, E 0.00 ft
Field Vertical Reference	Mean Sea Level	Section Azimuth	174.17°



Actual Wellpath Report

NORTH PLATTE 31-34-34HNC AWP

Page 2 of 5



REFERENCE WELLPATH IDENTIFICATION

Operator	BONANZA CREEK OIL COMPANY	Slot	SLOT#05 NORTH PLATTE 31-34-34HNC (1204'FSL & 2502'FWL, SEC.27)
Area	COLORADO	Well	NORTH PLATTE 31-34-34HNC
Field	WELD COUNTY	Wellbore	NORTH PLATTE 31-34-34HNC AWB
Facility	SEC.27-T05N-R63W		

WELLPATH DATA (95 stations) † = interpolated/extrapolated station

MD [ft]	Inclination [°]	Azimuth [°]	TVD [ft]	Vert Sect [ft]	North [ft]	East [ft]	DLS [°/100ft]	Comments
0.00†	0.000	278.250	0.00	0.00	0.00	0.00	0.00	
17.00	0.000	278.250	17.00	0.00	0.00	0.00	0.00	
154.00	0.250	278.250	154.00	-0.07	0.04	-0.30	0.18	FIRST BHI MWD SURVEY
426.00	0.310	315.280	426.00	-0.79	0.65	-1.40	0.07	
803.00	0.320	271.750	802.99	-1.72	1.41	-3.17	0.06	
992.00	0.190	253.990	991.99	-1.74	1.34	-4.00	0.08	
1181.00	0.460	226.460	1180.99	-1.22	0.73	-4.85	0.16	
1370.00	0.370	124.350	1369.98	-0.36	-0.14	-4.90	0.34	
1633.00	0.700	214.160	1632.97	1.42	-1.95	-5.10	0.30	
1752.00	0.560	236.130	1751.97	2.25	-2.87	-5.99	0.23	
1847.00	2.110	150.210	1846.94	4.07	-4.65	-5.51	2.26	
2035.00	5.420	161.490	2034.51	15.89	-16.08	-0.97	1.80	
2224.00	10.890	162.820	2221.53	42.13	-41.62	7.15	2.90	
2412.00	13.080	153.070	2405.44	79.39	-77.56	22.03	1.58	
2601.00	16.680	150.790	2588.08	124.26	-120.31	44.96	1.93	
2790.00	18.120	155.560	2768.43	177.02	-170.75	70.36	1.07	
2978.00	18.490	155.870	2946.92	233.03	-224.57	94.64	0.20	
3166.00	14.760	153.400	3127.03	283.74	-273.21	117.56	2.02	
3260.00	16.890	154.350	3217.46	307.79	-296.23	128.84	2.28	
3449.00	17.980	157.190	3397.78	361.52	-347.87	152.03	0.73	
3639.00	19.450	154.640	3577.73	419.38	-403.49	176.95	0.89	
3827.00	17.700	157.280	3755.93	476.23	-458.14	201.40	1.03	
4017.00	16.700	167.010	3937.47	530.97	-511.40	218.69	1.60	
4204.00	19.320	162.490	4115.30	587.93	-567.09	234.04	1.59	
4393.00	17.560	162.290	4294.59	646.46	-624.07	252.12	0.93	
4487.00	17.870	158.000	4384.14	674.19	-650.95	261.84	1.43	
4674.00	16.070	156.640	4562.99	726.43	-701.32	282.85	0.99	
4862.00	18.500	169.720	4742.55	781.01	-754.58	298.50	2.43	
4956.00	18.520	159.950	4831.71	810.35	-783.29	306.28	3.30	
5144.00	13.130	157.280	5012.52	859.76	-831.07	324.78	2.89	
5333.00	18.770	160.170	5194.18	909.85	-879.51	343.40	3.01	
5521.00	18.620	162.960	5372.26	968.64	-936.66	362.46	0.48	
5710.00	18.140	146.130	5551.75	1024.25	-989.98	387.71	2.81	
5899.00	18.170	151.750	5731.35	1077.46	-1040.37	418.06	0.93	
6087.00	20.020	155.140	5909.01	1134.99	-1095.40	445.47	1.15	
6181.00	20.940	155.150	5997.06	1166.08	-1125.24	459.29	0.98	
6276.00	23.870	157.130	6084.88	1200.51	-1158.36	473.90	3.18	
6370.00	31.730	163.150	6167.99	1243.04	-1199.62	488.48	8.87	
6464.00	40.970	172.230	6243.67	1298.26	-1253.96	499.85	11.35	
6559.00	47.860	170.670	6311.49	1364.62	-1319.66	509.78	7.34	
6653.00	59.810	175.560	6366.88	1440.32	-1394.85	518.61	13.38	
6747.00	72.310	180.720	6404.97	1525.81	-1480.52	521.20	14.21	
6841.00	84.270	184.040	6424.02	1616.72	-1572.30	517.33	13.18	
6886.00	89.660	182.990	6426.40	1661.05	-1617.13	514.58	12.20	
6935.00	90.550	182.300	6426.31	1709.51	-1666.08	512.32	2.30	



Actual Wellpath Report

NORTH PLATTE 31-34-34HNC AWP

Page 3 of 5



REFERENCE WELLPATH IDENTIFICATION

Operator	BONANZA CREEK OIL COMPANY	Slot	SLOT#05 NORTH PLATTE 31-34-34HNC (1204'FSL & 2502'FWL, SEC.27)
Area	COLORADO	Well	NORTH PLATTE 31-34-34HNC
Field	WELD COUNTY	Wellbore	NORTH PLATTE 31-34-34HNC AWB
Facility	SEC.27-T05N-R63W		

WELLPATH DATA (95 stations) † = interpolated/extrapolated station

MD [ft]	Inclination [°]	Azimuth [°]	TVD [ft]	Vert Sect [ft]	North [ft]	East [ft]	DLS [°/100ft]	Comments
6974.00†	91.177	181.379	6425.72	1748.16	-1705.06	511.06	2.86	7" CASING (498'FNL & 2171'FEL, SEC.34)
7014.00†	91.819	180.434	6424.67	1787.87	-1745.04	510.43	2.86	TOP (538'FNL & 2171'FEL, SEC.34)
7029.00	92.060	180.080	6424.17	1802.77	-1760.03	510.36	2.86	
7114.00	91.330	179.350	6421.65	1887.34	-1844.99	510.79	1.21	
7200.00	89.690	177.150	6420.89	1973.11	-1930.94	513.41	3.19	
7285.00	89.170	177.150	6421.73	2057.99	-2015.83	517.64	0.61	
7371.00	89.420	177.420	6422.79	2143.85	-2101.72	521.71	0.43	
7457.00	90.120	177.920	6423.14	2229.69	-2187.65	525.21	1.00	
7542.00	90.830	177.920	6422.43	2314.51	-2272.59	528.29	0.84	
7627.00	89.780	179.000	6421.98	2399.26	-2357.56	530.58	1.77	
7715.00	90.430	178.740	6421.82	2486.97	-2445.54	532.31	0.80	
7802.00	89.680	180.790	6421.73	2573.55	-2532.53	532.67	2.51	
7887.00	90.210	180.660	6421.82	2657.99	-2617.53	531.60	0.64	
7973.00	90.240	180.120	6421.48	2743.48	-2703.52	531.01	0.63	
8058.00	90.730	180.200	6420.76	2828.02	-2788.52	530.77	0.58	
8144.00	91.630	180.140	6418.99	2913.53	-2874.50	530.52	1.05	
8231.00	91.690	179.390	6416.47	3000.07	-2961.46	530.87	0.86	
8316.00	90.890	177.780	6414.55	3084.80	-3046.41	532.97	2.11	
8402.00	91.010	177.830	6413.13	3170.61	-3132.34	536.27	0.15	
8488.00	90.270	175.800	6412.17	3256.51	-3218.19	541.04	2.51	
8573.00	89.720	177.010	6412.17	3341.44	-3303.02	546.37	1.56	
8658.00	91.350	177.370	6411.38	3426.32	-3387.92	550.54	1.96	
8744.00	89.620	176.910	6410.65	3512.20	-3473.80	554.83	2.08	
8829.00	89.350	178.630	6411.42	3597.02	-3558.73	558.14	2.05	
8915.00	90.120	178.900	6411.81	3682.74	-3644.71	559.99	0.95	
9000.00	90.950	179.390	6411.02	3767.42	-3729.69	561.26	1.13	
9086.00	91.890	177.260	6408.89	3853.16	-3815.63	563.77	2.71	
9173.00	89.100	175.900	6408.14	3940.07	-3902.46	568.96	3.57	
9261.00	89.040	176.060	6409.57	4028.01	-3990.23	575.13	0.19	
9346.00	89.440	178.460	6410.69	4112.88	-4075.12	579.19	2.86	
9431.00	90.770	178.780	6410.54	4197.62	-4160.09	581.24	1.61	
9516.00	89.690	179.390	6410.20	4282.30	-4245.08	582.60	1.46	
9601.00	90.240	179.560	6410.25	4366.94	-4330.07	583.38	0.68	
9687.00	91.470	179.190	6408.97	4452.57	-4416.06	584.31	1.49	
9772.00	89.930	179.130	6407.93	4537.24	-4501.04	585.56	1.81	
9857.00	90.330	178.920	6407.73	4621.93	-4586.03	587.01	0.53	
9943.00	89.660	178.930	6407.74	4707.64	-4672.01	588.62	0.78	
10028.00	90.680	179.530	6407.49	4792.31	-4757.00	589.76	1.39	
10113.00	91.660	179.270	6405.75	4876.93	-4841.98	590.65	1.19	
10199.00	91.170	179.340	6403.63	4962.56	-4927.95	591.69	0.58	
10284.00	89.060	178.920	6403.46	5047.24	-5012.93	592.99	2.53	
10370.00	89.250	177.230	6404.73	5133.02	-5098.87	595.87	1.98	
10455.00	90.210	177.590	6405.13	5217.89	-5183.78	599.71	1.21	
10541.00	90.060	177.390	6404.93	5303.74	-5269.70	603.48	0.29	
10626.00	88.420	177.360	6406.05	5388.60	-5354.60	607.37	1.93	



Actual Wellpath Report

NORTH PLATTE 31-34-34HNC AWP

Page 4 of 5



REFERENCE WELLPATH IDENTIFICATION

Operator	BONANZA CREEK OIL COMPANY	Slot	SLOT#05 NORTH PLATTE 31-34-34HNC (1204'FSL & 2502'FWL, SEC.27)
Area	COLORADO	Well	NORTH PLATTE 31-34-34HNC
Field	WELD COUNTY	Wellbore	NORTH PLATTE 31-34-34HNC AWB
Facility	SEC.27-T05N-R63W		

WELLPATH DATA (95 stations)

MD [ft]	Inclination [°]	Azimuth [°]	TVD [ft]	Vert Sect [ft]	North [ft]	East [ft]	DLS [°/100ft]	Comments
10711.00	90.060	179.740	6407.18	5473.33	-5439.55	609.52	3.40	
10797.00	90.830	179.760	6406.51	5558.92	-5525.55	609.90	0.90	
11055.00	90.860	180.700	6402.71	5815.45	-5783.52	608.86	0.36	
11218.00	90.860	181.480	6400.26	5977.24	-5946.47	605.76	0.48	LAST BHI MWD SURVEY
11273.00	90.860	181.480	6399.44	6031.79	-6001.44	604.34	0.00	PROJECTION TO BIT (478'FSL & 2077'FEL, SEC.34)

HOLE & CASING SECTIONS - Ref Wellbore: NORTH PLATTE 31-34-34HNC AWB Ref Wellpath: NORTH PLATTE 31-34-34HNC AWP

String/Diameter	Start MD [ft]	End MD [ft]	Interval [ft]	Start TVD [ft]	End TVD [ft]	Start N/S [ft]	Start E/W [ft]	End N/S [ft]	End E/W [ft]
13.5in Open Hole	17.00	1690.00	1673.00	17.00	1689.97	0.00	0.00	-2.46	-5.51
9.625in Casing Surface	17.00	1680.00	1663.00	17.00	1679.97	0.00	0.00	-2.38	-5.43
8.75in Open Hole	1690.00	6984.00	5294.00	1689.97	6425.50	-2.46	-5.51	-1715.05	510.84
7in Casing Intermediate	17.00	6974.00	6957.00	17.00	6425.72	0.00	0.00	-1705.06	511.06
6.125in Open Hole	6984.00	11273.00	4289.00	6425.50	6399.44	-1715.05	510.84	-6001.44	604.34

TARGETS

Name	TVD [ft]	North [ft]	East [ft]	Grid East [US ft]	Grid North [US ft]	Latitude	Longitude	Shape
SEC.27-T05N-R63W	0.00	-66.42	-41.57	3300253.24	1378122.53	40°21'58.824"N	104°25'20.784"W	polygon
SEC.34-T05N-R63W	0.00	-66.42	-41.57	3300253.24	1378122.53	40°21'58.824"N	104°25'20.784"W	polygon
SEC.34-T05N-R63W HARDLINES (460'FSL)	6327.00	-66.42	-41.57	3300253.24	1378122.53	40°21'58.824"N	104°25'20.784"W	polygon
NORTH PLATTE 31-34-34HNC BHL ON PLAT (470'FSL & 2018'FEL, SEC.34)	6406.00	-6008.29	663.60	3301030.54	1372189.92	40°21'00.108"N	104°25'11.676"W	point
NORTH PLATTE 31-34-34HNC BHL REV-1 (470'FSL & 2068'FEL, SEC.34)	6406.00	-6008.29	613.59	3300980.54	1372189.31	40°21'00.108"N	104°25'12.322"W	point
NORTH PLATTE 31-34-34HNC EP ON PLAT	6406.00	-1738.59	604.96	3300920.02	1376458.41	40°21'42.300"N	104°25'12.432"W	point

WELLPATH COMPOSITION - Ref Wellbore: NORTH PLATTE 31-34-34HNC AWB Ref Wellpath: NORTH PLATTE 31-34-34HNC AWP

Start MD [ft]	End MD [ft]	Positional Uncertainty Model	Log Name/Comment	Wellbore
17.00	6935.00	NaviTrak (MagCorr)	BHI MWD/NAVITRAK (MAGCORR) 8.75" HOLE<154-6935>	NORTH PLATTE 31-34-34HNC AWB
6935.00	11218.00	NaviTrak (MagCorr)	BHI MWD/NAVITRAK (MAGCORR) 6.125" HOLE <7029-11218>	NORTH PLATTE 31-34-34HNC AWB
11218.00	11273.00	Blind Drilling (std)	Projection to bit	NORTH PLATTE 31-34-34HNC AWB



Actual Wellpath Report

NORTH PLATTE 31-34-34HNC AWP

Page 5 of 5



REFERENCE WELLPATH IDENTIFICATION

Operator	BONANZA CREEK OIL COMPANY	Slot	SLOT#05 NORTH PLATTE 31-34-34HNC (1204'FSL & 2502'FWL, SEC.27)
Area	COLORADO	Well	NORTH PLATTE 31-34-34HNC
Field	WELD COUNTY	Wellbore	NORTH PLATTE 31-34-34HNC AWB
Facility	SEC.27-T05N-R63W		

WELLPATH COMMENTS

MD [ft]	Inclination [°]	Azimuth [°]	TVD [ft]	Comment
154.00	0.250	278.250	154.00	FIRST BHI MWD SURVEY
6974.00	91.177	181.379	6425.72	7" CASING (498'FNL & 2171'FEL, SEC.34)
7014.00	91.819	180.434	6424.67	TOP (538'FNL & 2171'FEL, SEC.34)
11218.00	90.860	181.480	6400.26	LAST BHI MWD SURVEY
11273.00	90.860	181.480	6399.44	PROJECTION TO BIT (478'FSL & 2077'FEL, SEC.34)