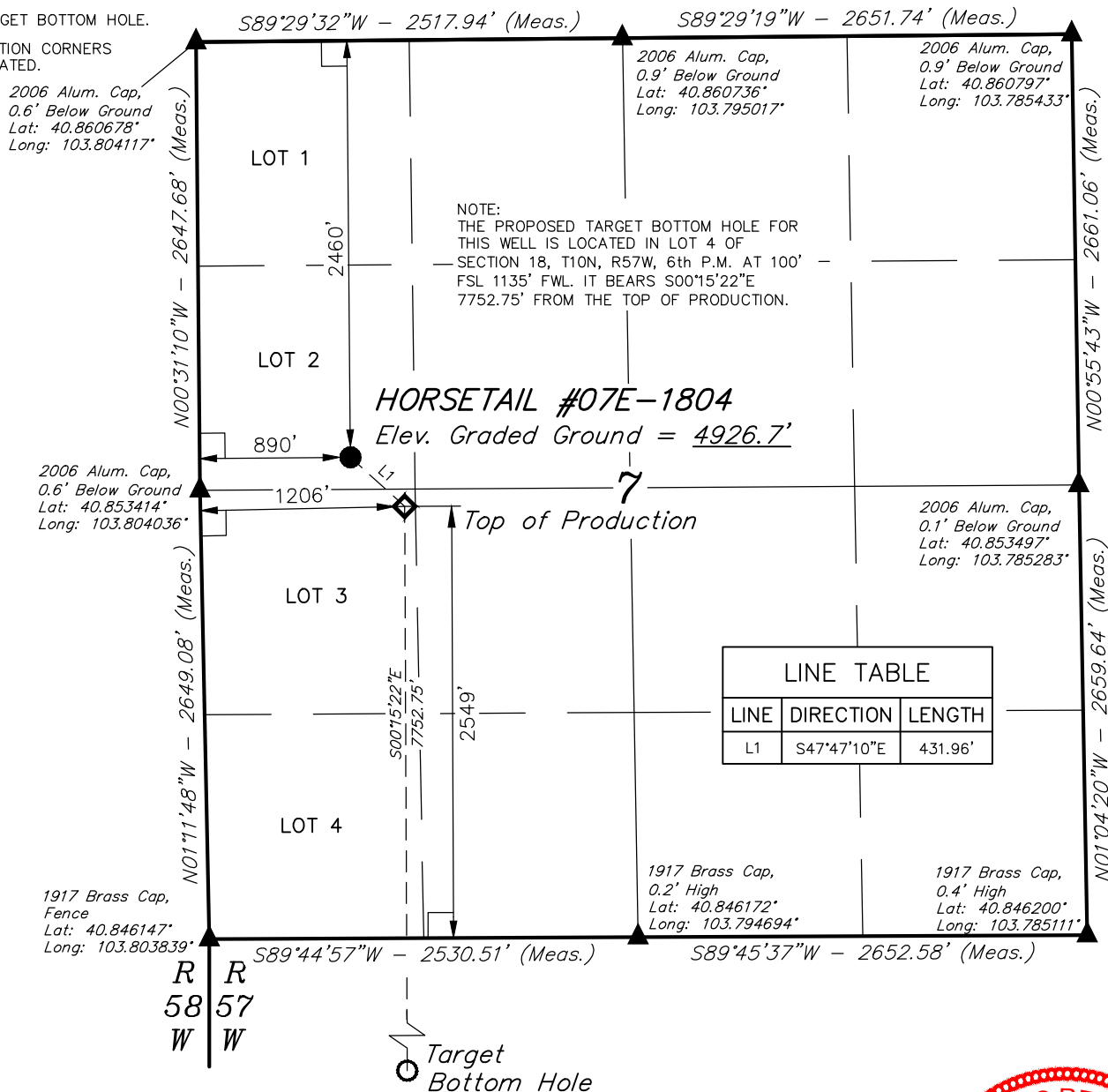


LEGEND:

- = 90° SYMBOL
- = PROPOSED WELLHEAD.
- = TOP OF PRODUCTION
- = TARGET BOTTOM HOLE.
- = SECTION CORNERS LOCATED.

T10N, R57W, 6th P.M.



LINE TABLE		
LINE	DIRECTION	LENGTH
L1	S47°47'10\"E	431.96'



NAD 83 (TOP OF PRODUCTION)	NAD 83 (SURFACE LOCATION)
LATITUDE = 40°51'11.35\" (40.853153)	LATITUDE = 40°51'14.22\" (40.853950)
LONGITUDE = 103°47'58.81\" (103.799669)	LONGITUDE = 103°48'02.97\" (103.800825)
NAD 27 (TOP OF PRODUCTION)	NAD 27 (SURFACE LOCATION)
LATITUDE = 40°51'11.40\" (40.853167)	LATITUDE = 40°51'14.27\" (40.853964)
LONGITUDE = 103°47'57.00\" (103.799167)	LONGITUDE = 103°48'01.16\" (103.800322)

BASIS OF BEARINGS
BASIS OF BEARINGS IS A G.P.S. OBSERVATION
BASIS OF ELEVATION

SPOT ELEVATION LOCATED AT THE NORTHEAST CORNER OF SECTION 15, T9N, R58W, 6th P.M. TAKEN FROM THE GATEHOOK SPRING, QUADRANGLE, COLORADO, WELD COUNTY, 7.5 MINUTE QUAD (TOPOGRAPHIC MAP) PUBLISHED BY THE UNITED STATES DEPARTMENT OF THE INTERIOR, GEOLOGICAL SURVEY. SAID ELEVATION IS MARKED AS BEING 4679 FEET.

CERTIFICATE
THIS IS TO CERTIFY THAT THE ABOVE PLAT WAS PREPARED FROM FIELD NOTES OF ACTUAL SURVEYS MADE BY ME OR UNDER MY SUPERVISION AND THAT THE SAME ARE TRUE AND CORRECT TO THE BEST OF MY KNOWLEDGE AND BELIEF.

REGISTERED LAND SURVEYOR
REGISTRATION NO. 28285
STATE OF COLORADO

WHITING OIL & GAS CORP.

HORSETAIL #07E-1804 (SURFACE LOCATION)
LOT 2, SECTION 7, T10N, R57W, 6th P.M.
WELD COUNTY, COLORADO

SURVEYED BY: DALLAS NIELSEN, J.S.	DATE: 12-12-14
DRAWN BY: K.B.	DATE DRAWN: 07-31-14
SCALE: 1" = 1000'	REVISED: 12-01-15 M.O.E.

WELL LOCATION PLAT



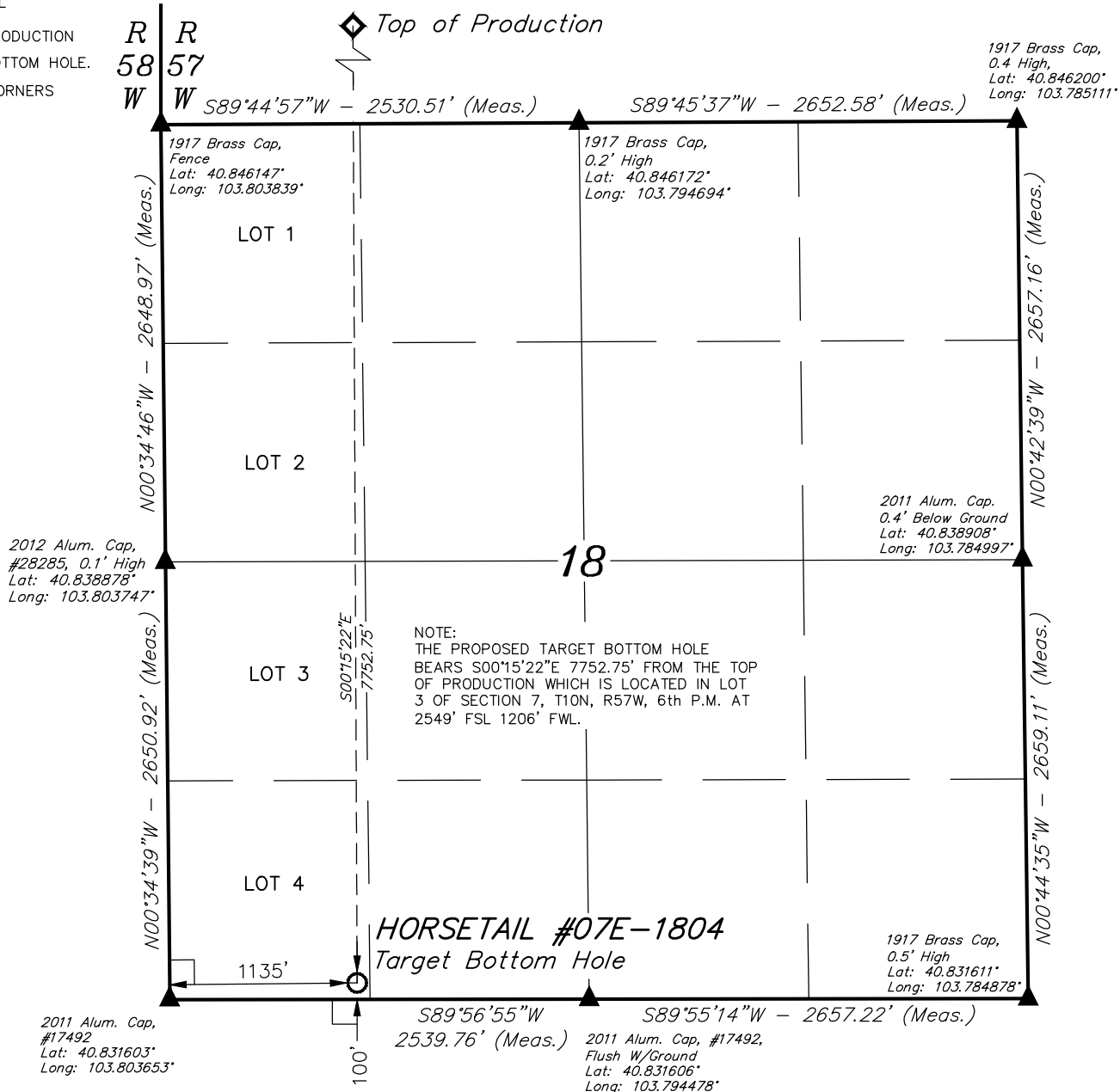
UELS, LLC
Corporate Office * 85 South 200 East
Vernal, UT 84078 * (435) 789-1017



LEGEND:

- = 90° SYMBOL
- = TOP OF PRODUCTION
- = TARGET BOTTOM HOLE.
- = SECTION CORNERS LOCATED.

T10N, R57W, 6th P.M.



NAD 83 (TARGET BOTTOM HOLE)
LATITUDE = 40°49'54.76" (40.831878)
LONGITUDE = 103°47'58.40" (103.799556)
NAD 27 (TARGET BOTTOM HOLE)
LATITUDE = 40°49'54.82" (40.831894)
LONGITUDE = 103°47'56.60" (103.799056)



BASIS OF BEARINGS
BASIS OF BEARINGS IS A G.P.S. OBSERVATION

BASIS OF ELEVATION

SPOT ELEVATION LOCATED AT THE NORTHEAST CORNER OF SECTION 15, T9N, R58W, 6th P.M. TAKEN FROM THE GATEHOOK SPRING, QUADRANGLE, COLORADO, WELD COUNTY, 7.5 MINUTE QUAD (TOPOGRAPHIC MAP) PUBLISHED BY THE UNITED STATES DEPARTMENT OF THE INTERIOR, GEOLOGICAL SURVEY. SAID ELEVATION IS MARKED AS BEING 4679 FEET.

CERTIFICATE
THIS IS TO CERTIFY THAT THE ABOVE PLAT WAS PREPARED FROM FIELD NOTES OF ACTUAL SURVEYS MADE BY ME OR UNDER MY SUPERVISION AND THAT THE SAME ARE TRUE AND CORRECT TO THE BEST OF MY KNOWLEDGE AND BELIEF.

REGISTERED LAND SURVEYOR
REGISTRATION NO. 28285
STATE OF COLORADO

WHITING OIL & GAS CORP.

**HORSETAIL #07E-1804 (TARGET BOTTOM HOLE)
LOT 4, SECTION 18, T10N, R57W, 6th P.M.
WELD COUNTY, COLORADO**

SURVEYED BY: DALLAS NIELSEN, J.S.	DATE: 12-12-14
DRAWN BY: K.B.	DATE DRAWN: 07-31-14
SCALE: 1" = 1000'	REVISED: 12-01-15 M.O.E.

WELL LOCATION PLAT



UELS, LLC
Corporate Office * 85 South 200 East
Vernal, UT 84078 * (435) 789-1017

