

*T10N, R57W, 6th P.M.*

- 2006 Alum. Cap,  
0.6' Below Ground  
Lat: 40.860678°  
Long: 103.804117°

$S89^{\circ}29'19''W - 2651.74' (Meas.)$

2006 Alum. Cap,  
0.9' Below Ground  
Lat: 40.860736°  
Long: 103.795017°

2006 Alum. Cap,  
0.9' Below Ground  
Lat: 40.860797°  
Long: 103.785433°

NOTE:  
THE PROPOSED TARGET BOTTOM HOLE FOR  
THIS WELL IS LOCATED IN LOT 4 OF  
SECTION 18, T10N, R57W, 6th P.M. AT 100'  
FSL 973' FWL. IT BEARS S00°00'09"W  
7753.26' FROM THE TOP OF PRODUCTION.

*HORSETAIL #07E-1836*

*Elev. Graded Ground = 4924.3'*

2006 Alum. Cap,  
0.6' Below Ground  
Lat: 40.853414°  
Long: 103.804036

2006 Alum. Cap,  
0.1' Below Ground  
Lat: 40.853497°  
Long: 103.785283°

1917 Brass Cap,  
Fence  
Lat: 40.846147°  
Long: 103.803839°

1917 Brass Cap,  
0.2' High  
Lat: 40.846172°  
Long: 103.794694°

1917 Brass Cap,  
0.4' High  
Lat: 40.846200°  
Long: 103.78511

LINE TABLE		
LINE	DIRECTION	LENGTH
L1	S37°28'25"E	366.37'

$R$	$R$
$58$	$57$
$W$	$W$

Target  
Bottom Hole

**PDOP = 1.5**



<b>NAD 83 (TOP OF PRODUCTION)</b>	<b>NAD 83 (SURFACE LOCATION)</b>
LATITUDE = 40°51'11.36" (40.853156)	LATITUDE = 40°51'14.23" (40.853953)
LONGITUDE = 103°48'00.46" (103.800128)	LONGITUDE = 103°48'03.36" (103.800933)
<b>NAD 27 (TOP OF PRODUCTION)</b>	<b>NAD 27 (SURFACE LOCATION)</b>
LATITUDE = 40°51'11.41" (40.853169)	LATITUDE = 40°51'14.28" (40.853967)
LONGITUDE = 103°47'58.66" (103.799628)	LONGITUDE = 103°48'01.55" (103.800431)

### BASIS OF BEARINGS

BASIS OF BEARINGS IS A G.P.S. OBSERVATION

SPOT ELEVATION LOCATED AT THE NORTHEAST CORNER OF SECTION 15, T9N, R58W, 6th P.M. TAKEN FROM THE GATEHOOK SPRING, QUADRANGLE, COLORADO, WELD COUNTY, 7.5 MINUTE QUAD (TOPOGRAPHIC MAP) PUBLISHED BY THE UNITED STATES DEPARTMENT OF THE INTERIOR, GEOLOGICAL SURVEY. SAID ELEVATION IS MARKED AS BEING 4679 FEET.



**UELS, LLC**

**Corporate Office \* 85 South 200 East  
Vernal, UT 84078 \* (435) 789-1017**



THIS IS TO CERTIFY THAT THE ABOVE MAP WAS PREPARED FROM FIELD NOTES OF ACTUAL SURVEYS MADE BY ME OR UNDER MY SUPERVISION, AND THAT THE SAME ARE TRUE AND CORRECT TO THE BEST OF MY KNOWLEDGE AND BELIEF.

REGISTERED LAND SURVEYOR  
REGISTRATION NO. 28285  
STATE OF COLORADO

STATE OF COLORADO 12-03-15

**WHITING OIL & GAS CORP.**

**HORSETAIL #07E-1836 (SURFACE LOCATION)  
LOT 2, SECTION 7, T10N, R57W, 6th P.M.  
WELD COUNTY, COLORADO**

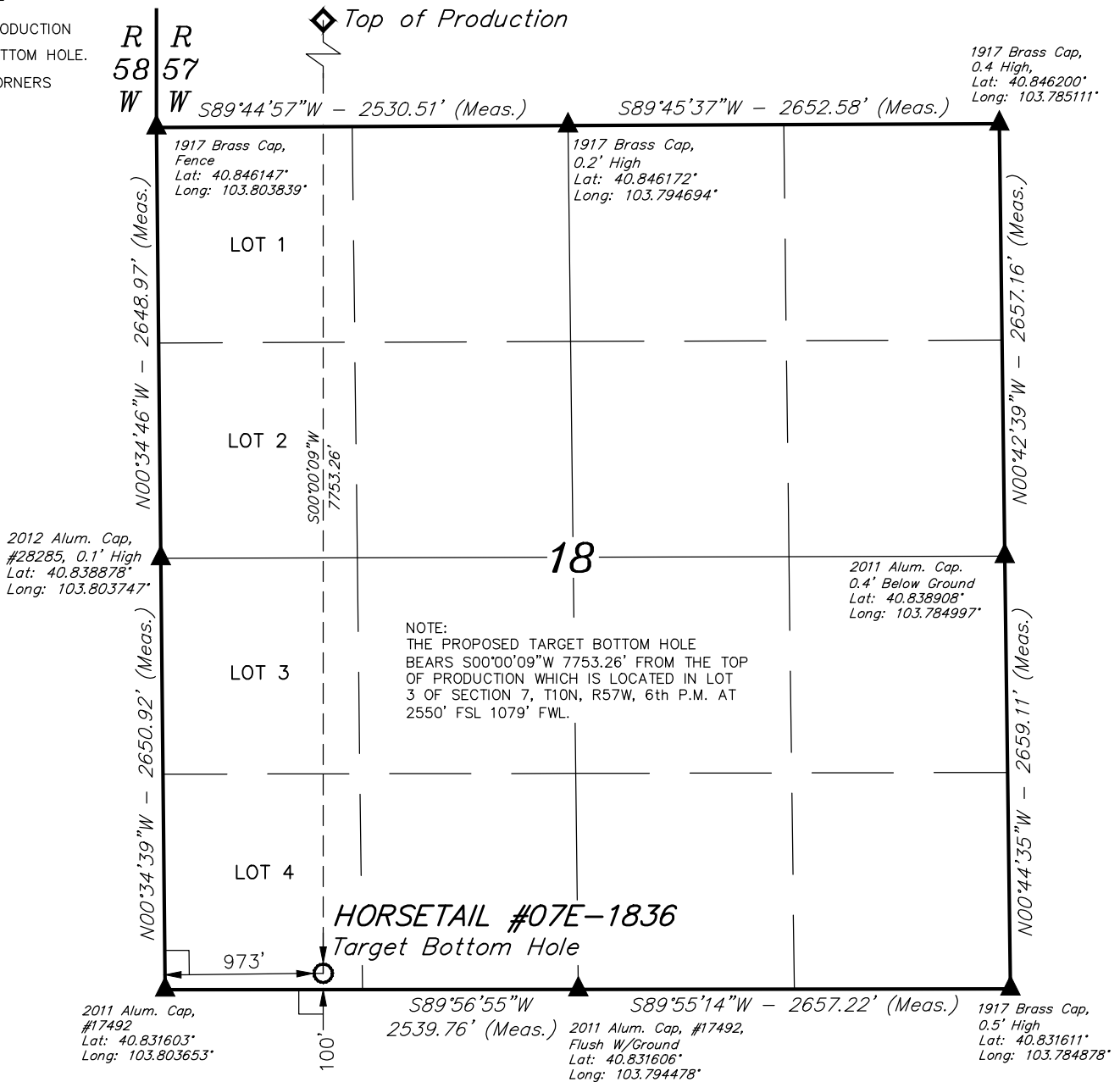
SURVEYED BY: DALLAS NIELSEN, J.S.		DATE: 12-12-14
DRAWN BY: K.B.		DATE DRAWN: 10-30-14
SCALE: 1" = 1000'		REVISED: 12-01-15 M.O.E.

## WELL LOCATION PLAT

# LEGEND:

- 90° SYMBOL
- TOP OF PRODUCTION
- TARGET BOTTOM HOLE.
- SECTION CORNERS LOCATED.

T10N, R57W, 6th P.M.



<b>NAD 83 (TARGET BOTTOM HOLE)</b>
LATITUDE = 40°49'54.76" (40.831878)
LONGITUDE = 103°48'00.51" (103.800142)
<b>NAD 27 (TARGET BOTTOM HOLE)</b>
LATITUDE = 40°49'54.82" (40.831894)
LONGITUDE = 103°47'58.71" (103.799642)



**CERTIFICATE**  
THIS IS TO CERTIFY THAT THE ABOVE PLAT WAS PREPARED FROM FIELD NOTES OF ACTUAL SURVEYS MADE BY ME OR UNDER MY SUPERVISION AND THAT THE SAME ARE TRUE AND CORRECT TO THE BEST OF MY KNOWLEDGE AND BELIEF.



**BASIS OF BEARINGS**  
BASIS OF BEARINGS IS A G.P.S. OBSERVATION  
**BASIS OF ELEVATION**

SPOT ELEVATION LOCATED AT THE NORTHEAST CORNER OF SECTION 15, T9N, R58W, 6th P.M. TAKEN FROM THE GATEHOOK SPRING, QUADRANGLE, COLORADO, WELD COUNTY, 7.5 MINUTE QUAD (TOPOGRAPHIC MAP) PUBLISHED BY THE UNITED STATES DEPARTMENT OF THE INTERIOR, GEOLOGICAL SURVEY. SAID ELEVATION IS MARKED AS BEING 4679 FEET.

**WHITING OIL & GAS CORP.**

**HORSETAIL #07E-1836 (TARGET BOTTOM HOLE)  
LOT 4, SECTION 18, T10N, R57W, 6th P.M.  
WELD COUNTY, COLORADO**

SURVEYED BY: DALLAS NIELSEN, J.S.	DATE: 12-12-14
DRAWN BY: K.B.	DATE DRAWN: 10-30-14
SCALE: 1" = 1000'	REVISED: 12-01-15 M.O.E.

**WELL LOCATION PLAT**



**UELS, LLC**  
Corporate Office \* 85 South 200 East  
Vernal, UT 84078 \* (435) 789-1017

